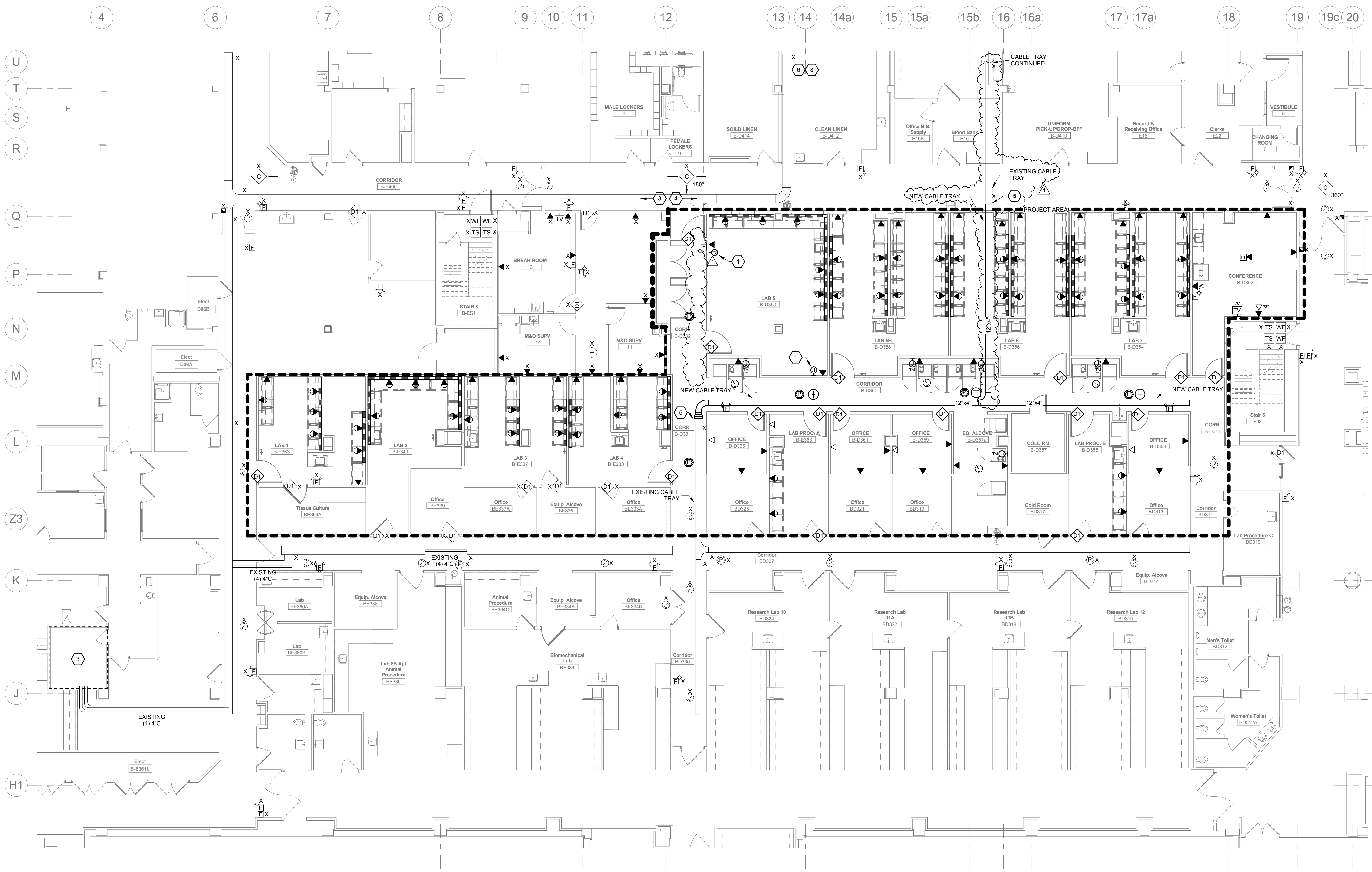


three inches = one foot
one and one half inches = one foot
one inch = one foot
three quarters inch = one foot
one half inch = one foot
three eighths inch = one foot
one quarter inch = one foot
one eighth inch = one foot



PARTIAL BASEMENT TELECOMMUNICATION PLAN
1/8" = 1'-0"
0' 4' 8' 16' 32'

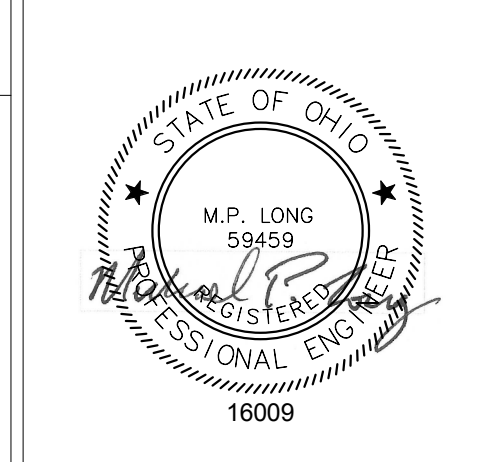
- ### FIRE ALARM GENERAL NOTES
- F1 ALL FIRE ALARM SYSTEM DEVICES SHALL BE CONNECTED COMPLETE TO THE MAIN FIRE ALARM SYSTEM CONTROL PANEL IN ACCORDANCE WITH ENGINEER APPROVED MANUFACTURER'S SHOP DRAWING WIRING DIAGRAMS AND DETAILS.
 - F2 ALL FIRE ALARM SYSTEM CONDUCTORS SHALL BE INSTALLED IN 3/4" MINIMUM SIZE CONDUIT SYSTEM.
 - F3 IN GENERAL ALL MANUAL PULL STATIONS SHALL BE INSTALLED AT 48" ABOVE FINISHED FLOOR. MANUAL PULL STATIONS SHALL BE INSTALLED WITHIN 5'-0" OF ALL EXIT DOORWAY OPENINGS AT EACH EXIT ON EACH FLOOR. ADDITIONAL MANUAL PULL STATIONS SHALL BE PROVIDED SO THAT THE TRAVEL DISTANCE TO THE NEAREST PULL STATION WILL NOT EXCEED 200' MEASURED HORIZONTALLY ON THE SAME FLOOR.
 - F4 ALL AUDIOVISUAL AND VISUAL ONLY FIRE ALARM SYSTEM DEVICES SHALL BE ADA TYPE. IN ALL CASES VISUAL DEVICES SHALL BE WALL MOUNTED AT 80" ABOVE FINISHED FLOOR. VISUAL DEVICES SHALL BE LOCATED NOT MORE THAN 15' FROM THE END OF ALL CORRIDORS WITH A SEPARATION NOT GREATER THAN 100' BETWEEN DEVICES. AUDIO DEVICES SHALL BE INSTALLED THROUGHOUT THE BUILDING TO ATTAIN MINIMUM DECIBEL LEVELS REQUIRED BY CODE. COMBINATION AUDIO/VISUAL DEVICES AND ADDITIONAL VISUAL ONLY DEVICES SHALL BE INSTALLED AT LOCATIONS AS INDICATED ON FLOOR PLANS.
 - F5 IN GENERAL SMOKE DETECTORS SHALL BE INSTALLED ON CEILINGS WITH SPACING NOT TO EXCEED MANUFACTURER'S RECOMMENDATION.
 - F6 SPRINKLER SYSTEM WATERFLOW ALARM INITIATING DEVICES SHALL BE CONNECTED COMPLETE TO THE FIRE ALARM SYSTEM.
 - F7 DUCT TYPE SMOKE DETECTORS SHALL BE PROVIDED FOR ALL HVAC RETURN AIR SYSTEMS WITH DESIGN CAPACITY GREATER THAN 2,000 CFM. WHERE RETURN AIR RISERS SERVE TWO OR MORE STORIES, AND ARE PART OF A RETURN AIR SYSTEM HAVING A DESIGN CAPACITY GREATER THAN 15,000 CFM, DUCT DETECTORS SHALL BE PROVIDED AT EACH STORY. COORDINATE EXACT DETECTOR LOCATIONS AND PROVISION OF ADEQUATE DUCT LENGTHS WITH THE MECHANICAL CONTRACTOR PRIOR TO ROUGH-IN.
 - F8 PROVIDE ALL FIRE ALARM SYSTEM COMPONENTS NECESSARY FOR SHUT DOWN OF HVAC EQUIPMENT BY THE FIRE ALARM SYSTEM WHERE SAME IS REQUIRED.
 - F9 PROVIDE ALL FIRE ALARM SYSTEM COMPONENTS NECESSARY FOR ELEVATOR CAPTURE BY THE FIRE ALARM SYSTEM WHERE SAME IS REQUIRED.
 - F10 SMOKE DETECTORS SHALL BE INSTALLED WITHIN 8'-0" OF CENTERLINE OF SMOKE DOORS ON HOLD-OPEN.
 - F11 SMOKE DETECTORS SHALL NOT BE LOCATED CLOSER THAN 3'-0" FROM AN AIR SUPPLY DIFFUSER.
 - F12 AUTOMATIC DOORS LOCATED ON A 2-HOUR FIRE RATED WALL SHALL HAVE A FIRE ALARM INTERFACE THAT INTERRUPTS 120V POWER FOR THE AUTOMATIC DOOR OPENER UNDER A FIRE ALARM CONDITION. PROVIDE (1) CONTROL MODULE FROM EACH BUILDING FIRE ALARM SYSTEM IF LOCATED ALONG THE BORDER OF TWO BUILDINGS.

- ### CODED NOTES:
- 1 PROVIDE 2 GANG FLUSH BOX WITH 1 GANG RAISED COVER, BLANK STAINLESS STEEL COVERPLATE, WALL MOUNTED AT 18" AFF WITH 1" CONDUIT WITH PULLWIRE TO 6" ABOVE FINISHED CEILING AT AN ACCESSIBLE LOCATION - STUB AND BUSH.
 - 2 NOT USED.
 - 3 TERMINATE ALL TELECOMMUNICATIONS OUTLET CABLEING WEST OF COLUMN LINE 12 TO EXISTING TELECOMMUNICATIONS ROOM BF-312. REFER TO BASEMENT ELECTRICAL KEY PLAN FOR LOCATION.
 - 4 TERMINATE ALL TELECOMMUNICATIONS OUTLET CABLEING EAST OF COLUMN LINE 12 TO EXISTING TELECOMMUNICATIONS ROOM B-D422. REFER TO BASEMENT ELECTRICAL KEY PLAN FOR LOCATION.
 - 5 CONNECT NEW CABLE TRAY TO EXISTING CABLE TRAY. COORDINATE EXACT LOCATION OF EXISTING CABLE TRAY.
 - 6 TERMINATE ALL FIRE ALARM DEVICES TO EXISTING FIRE ALARM TERMINAL CABINET IN SECURITY ROOM B-D421. REFER TO BASEMENT ELECTRICAL KEY PLAN FOR LOCATION.
 - 7 NOT USED.
 - 8 ROUTE TCO CABLEING IN NEW J-HOOKS TO TELECOMMUNICATIONS ROOM B-D422. FOLLOWING PATH OF EXISTING CABLEING FROM RESEARCH SOUTH AREA.

FOR CONSTRUCTION

ADDENDUM 03	03/17/17
FINAL SUBMISSION	07/05/16
Revisions:	Date

CONSULTANTS:



ARCHITECT/ENGINEERS:

MARKOVICH & PUSTI
ARCHITECTS, INC.
111 FRONT STREET, BUREAU, OHIO 44017
(440) 991-0910 P
(440) 991-0800 F

FREDERICK, FREDRICK & HELLER
ENGINEERS, INC.
10000 W. 17th Ave., Suite 200
Broomfield, CO 80020
(303) 440-9900
Fax: (303) 440-9901

Drawing Title
PARTIAL BASEMENT TELECOMMUNICATIONS PLAN

Approved: Project Director

Project Title
VAMC WADE PARK CLEVELAND RENOVATE RESEARCH NORTH

Location
10701 EAST BLVD, CLEVELAND, OHIO 44106

Date
07/05/16

Checked By
MPL

Drawn By
TWM

Project Number
541-13-104

Building Number
1

Drawing Number
1-E7

Office of Construction and Facilities Management

Department of Veterans Affairs

FINAL SUBMISSION FULLY SPRINKLERED