

NOTES:

- General Notes**
- FOR ABBREVIATIONS, GENERAL NOTES, ELECTRICAL DWG. #E-001.
 - LIGHT SOLID LINES DENOTE EXISTING EQUIPMENT TO REMAIN. DARK SOLID LINES DENOTE NEW AND/OR RELOCATED EQUIPMENT.
 - FOR EXACT LOCATION OF ELECTRICAL EQUIPMENT, SEE ARCHITECTURAL PLANS, ELEVATIONS AND DETAILS.
 - FOR TECHNOLOGY CONDUIT AND BACKBOX DETAILS, SEE ELECTRICAL AND MECHANICAL REFERENCE DRAWINGS. REFER TO "E" DRAWINGS.

Key Notes

KEY PLAN

NS

100% CD
FULLY SPRINKLERED

Project Number
541-12-103

Project Title
Wade Park
Renovate Medical Library - CARES

Project Location
Cleveland, Ohio

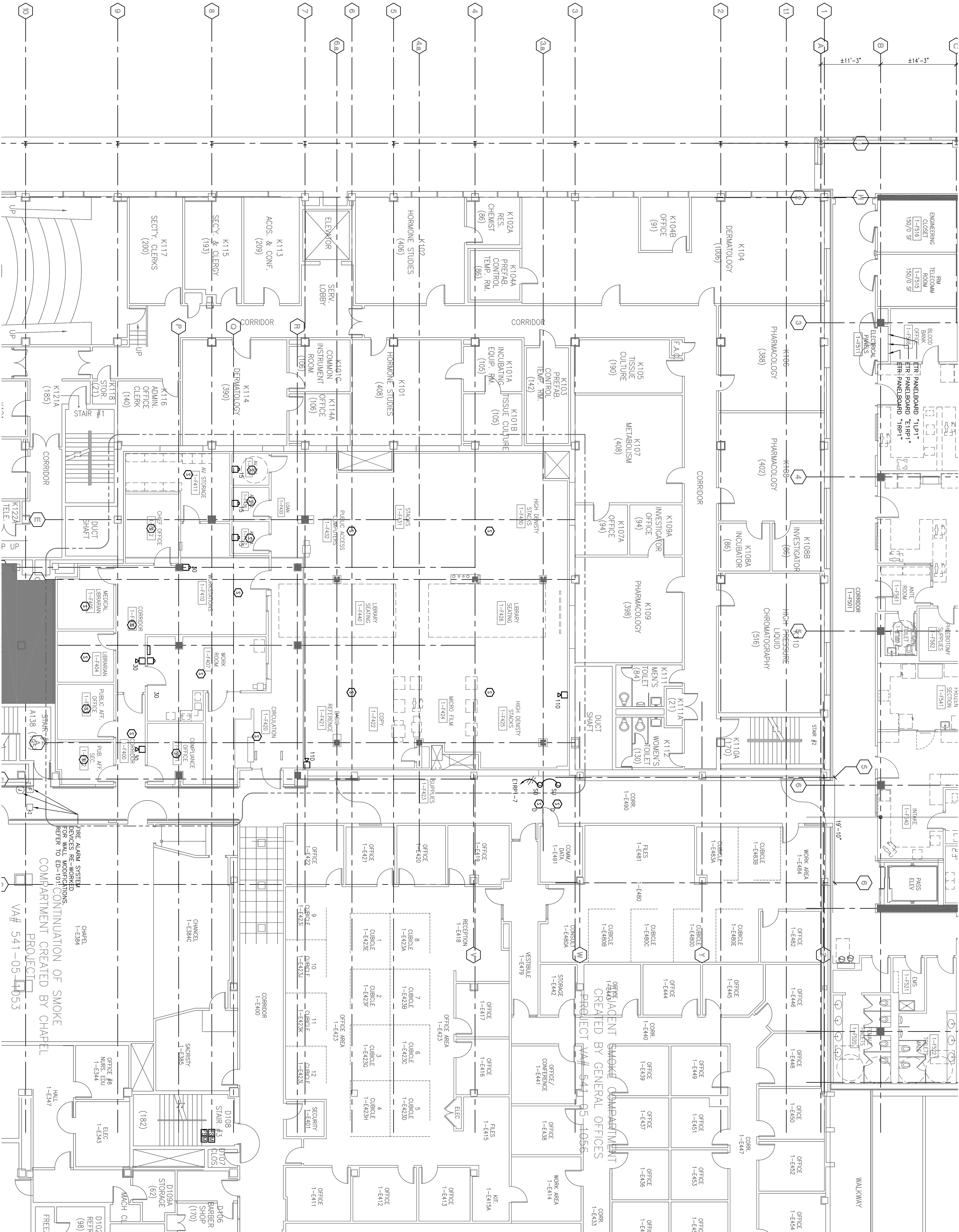
Project Date
April 25, 2012

Project Building Number
1

Project Drawing Number
EY-101

Project Drawing Date
of

Project Drawing By
Department of Veterans Affairs



F1 FIRST FLOOR FIRE ALARM PLAN
SCALE: 1/8" = 1'-0"



CONSULTANTS:

ARCHITECT/ENGINEERS:

Westlake Reed Leskosky

925 Euclid Avenue, Suite 1900, Cleveland, Ohio 44115
216.522.1350
Phoenix - Washington - Cleveland
WRL Commission #09017/00

**FIRST FLOOR
FIRE ALARM PLAN**

Approved Project Director
Location
Cleveland, Ohio
Date
April 25, 2012
Checked
Drawn

Office of Facilities Management
Drawing Number
1
Drawing Date
EY-101
Drawing By
Department of Veterans Affairs

Revisions	Date

