

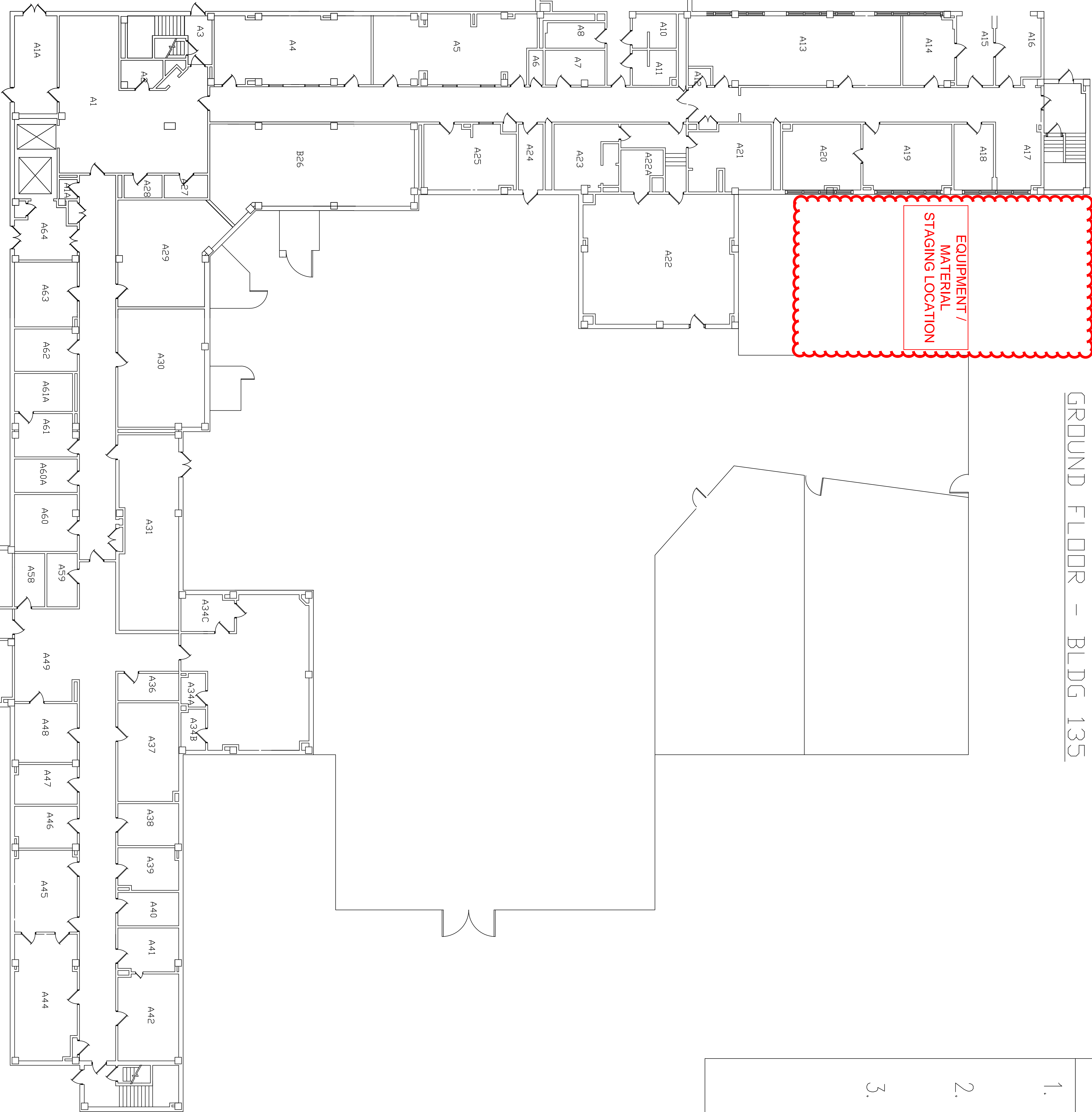
GROUND FLOOR – BLDG 135

EQUIPMENT /
MATERIAL
STAGING LOCATION

- GENERAL NOTES:
1. HIGHLIGHTED AREAD FOR MATERIAL AND EQUIPMENT STAGING AREA.

2. EXISTING VEGETATION SHALL BE PRESERVED TO THE MAXIMUM EXTENT POSSIBLE.

3. ANY VEGETATION DISTURBED DURING CONSTRUCTION SHALL BE RESTORED TO EXISTING CONDITION OR BETTER.



SCALE:NOT TO SCALE