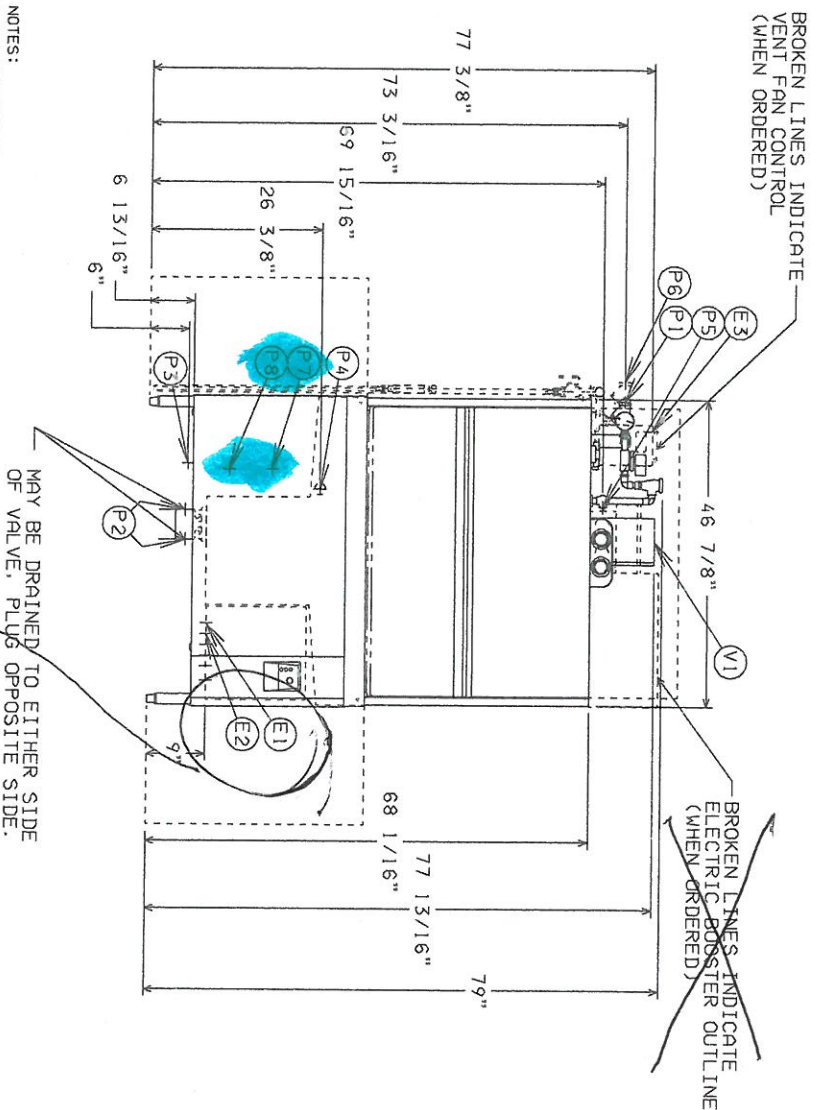


# UW50 UTENSIL/PAN WASHER

**HOBART**  
701 S Ridge Avenue, Troy, OH 45374  
1-888-4HOBART • www.hobartcorp.com

## DETAILS & DIMENSIONS - STEAM INJECTOR/STEAM COIL



### PLUMBING NOTES:

WATER HAMMER ARRESTOR (MEETING ASSE-1010 STANDARD OR EQUIVALENT) TO BE SUPPLIED (BY OTHERS) IN COMMON WATER SUPPLY LINE AT SERVICE CONNECTION. RECOMMENDED BUILDING FLOWING WATER PRESSURE TO THE DISHWASHER IS 20-25 PSI. IF PRESSURES HIGHER THAN 25 PSI ARE ENCOUNTERED, A PRESSURE REGULATING VALVE MUST BE SUPPLIED (BY OTHERS) IN THE WATER LINE TO THE DISHWASHER. PRESSURE REGULATOR FURNISHED WHEN ELECTRIC BOOSTER IS ORDERED. FOR CONVENIENCE WHEN CLEANING, WATER TAP SHOULD BE INSTALLED NEAR MACHINE WITH HEAVY DUTY HOSE AND SQUEEZE VALVE. FLOWING STEAM PRESSURES ABOVE 50 PSI MUST HAVE A PRESSURE REGULATOR (NOT SUPPLIED) INSTALLED IN THE STEAM LINE. SHUT OFF VALVE MUST BE SUPPLIED (BY OTHERS) IN THE STEAM LINE TO THE DISHWASHER.

### MISCELLANEOUS NOTES:

ALL DIMENSIONS TAKEN FROM FLOOR LINE MAY BE INCREASED BY UP TO 1-1/8" WITH LEG ADJUSTMENT. NET WEIGHT OF MACHINE: 640 LBS. W/O BOOSTER DOMESTIC SHIPPING WEIGHT: 782 LBS. W/O BOOSTER NET WEIGHT OF MACHINE: 704 LBS. W/ BOOSTER DOMESTIC SHIPPING WEIGHT: 846 LBS. W/ BOOSTER SHIPPING DIMENSIONS: 60" X 38" X 83" HIGH. SIZE OF RECKS: 40-7/8" X 22-7/8" X 4-1/8" DRAIN LEVER LOCATED INSIDE TANK.

SINGLE POINT ELECTRIC CONNECTION (CONTROL-S AND SPP PUMP MOTOR)			
ELEC. SPEC'S.	RATED AMP'S	MINIMUM SUPPLY CIRCUIT PROTECTIVE DEVICE	MAXIMUM DISCURRENT PROTECTIVE DEVICE
208/60/3	20.3	25	25
240/60/3	17.6	25	25
480/60/3	9.2	15	15

SINGLE POINT ELECTRIC CONNECTION (CONTROL-S AND SPP PUMP MOTOR)			
ELEC. SPEC'S.	RATED AMP'S	MINIMUM SUPPLY CIRCUIT PROTECTIVE DEVICE	MAXIMUM DISCURRENT PROTECTIVE DEVICE
208/60/3	60.3	80	80
240/60/3	52.3	70	70
480/60/3	26.4	35	35

### CONNECTION INFORMATION (KAFF - ABOVE FINISHED FLOOR)

#### LEGEND

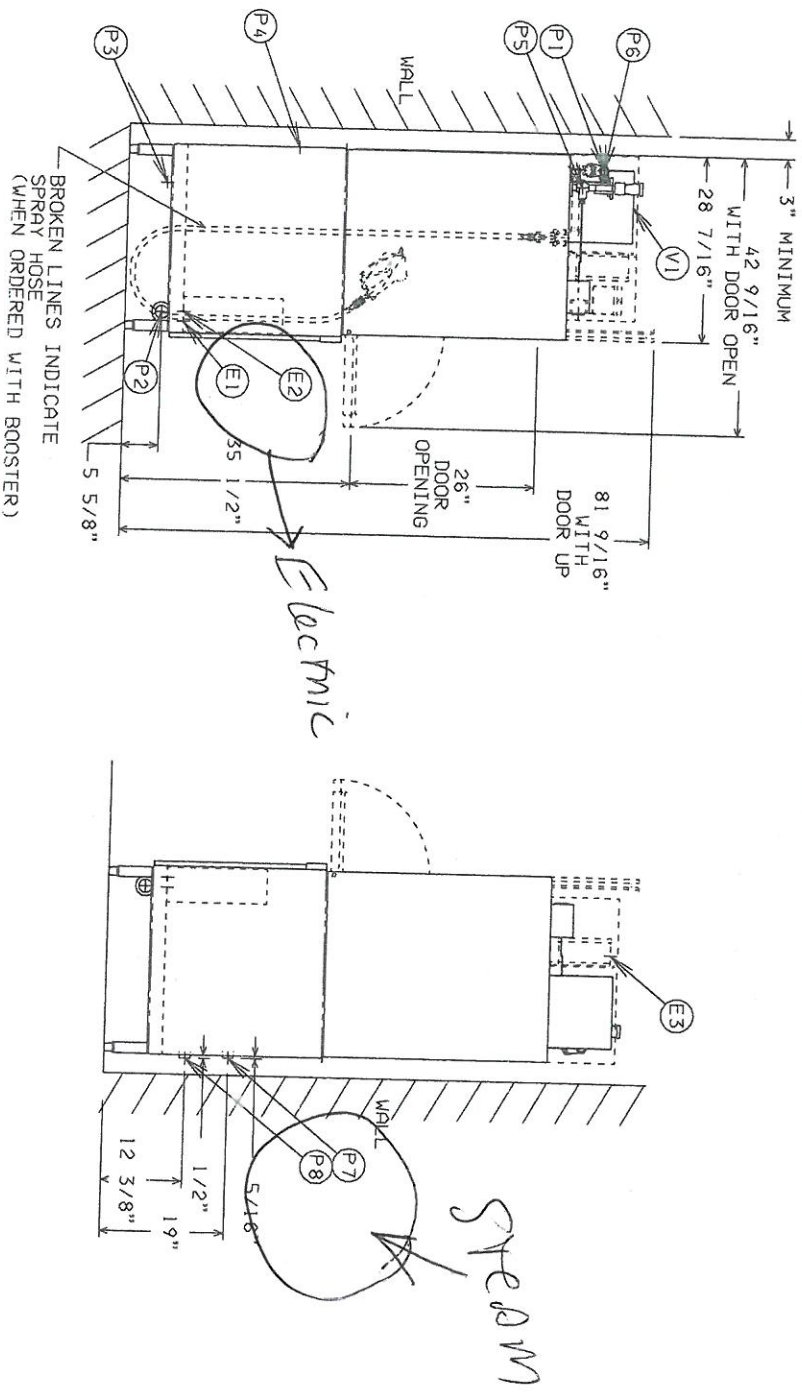
- E1 ELECTRICAL CONNECTION (MOTOR & CONTROLS): 1-1/4" CONDUIT HOLE, 9" AFF.
- E2 ELECTRIC CONNECTION-DETERGENT/RINSE AGENT FEEDERS: 1/2" CONDUIT HOLE, 9" AFF.
- E3 ELECTRIC CONNECTION-VENT FAN CONTROL (WHEN ORDERED): 3/4" CONDUIT HOLE: 7-3/8" AFF
- P1 COMMON WATER CONNECTION: 180° F. WATER MIN., 3/4" FPT., 73-3/16" AFF.
- P2 DRAIN: 2" FPT., 5-5/8" AFF TWO CONNECTIONS.
- P3 STEAM INJECTOR: 10 TO 25 PSI FLOWING, 50 PSI MAX., 3/4" FPT., 6" AFF.
- P4 DETERGENT PROBE SENSOR: REMOVE CAP AND STUD ASSEMBLY TO ACCESS 7/8" HOLE, 26-3/8" AFF.
- P5 RINSE AGENT FEEDER: 1/8" NPT. REMOVE 1/8" NPT PIPE PLUG TO ACCESS TAPPED HOLE, 89-15/16" AFF.
- P6 COMMON WATER CONNECTION WITH ELECTRIC BOOSTER (WHEN ORDERED): 140° F. MIN., 3/4" FPT., 73-3/16" AFF, 5-1/2" DIA., 19" AFF.
- P7 STEAM COIL: 10 TO 25 PSI FLOWING, 50 PSI MAX., 3/4" FPT., 19" AFF.
- P8 CONDENSATE RETURN: 10 TO 50 PSI FLOWING, 3/4" FPT., 12-3/8" AFF. (BUCKET TYPE TRAP FURNISHED).
- V1 VENT EXIT: 7" X 11" X 10" HIGH TO ALLOW FOR EXPANSION OF AIR. (NEED NOT BE CONNECTED TO EXTERNAL VENT); IF REQUIRED, VENT HOOD TO PROVIDE 400 CFM EXHAUST.

**HOBART**

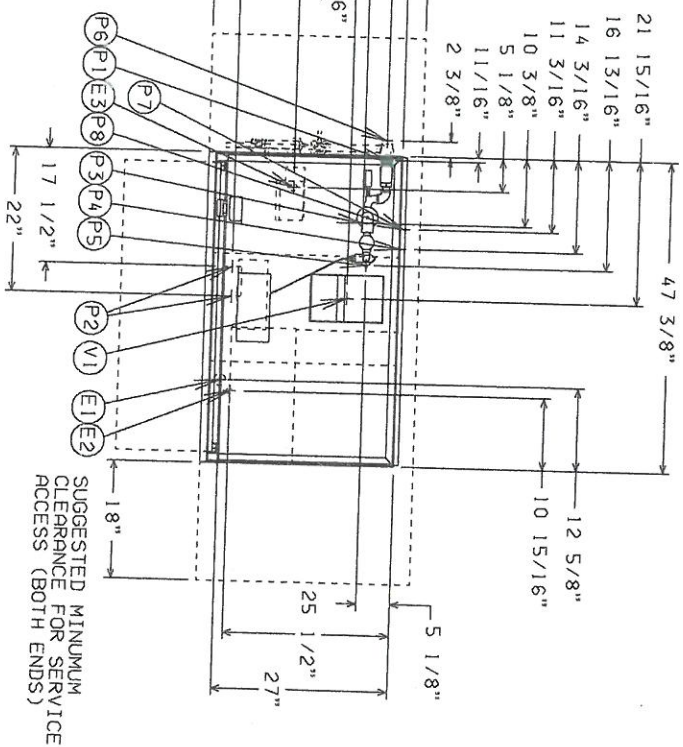
701 S Ridge Avenue, Troy, OH 45374  
1-888-4HOBART • www.hobartcorp.com

# UW50 UTENSIL/PAN WASHER

## DETAILS & DIMENSIONS - STEAM INJECTOR/STEAM COIL



**WARNING**  
ELECTRICAL AND GROUNDING CONNECTIONS MUST COMPLY WITH THE NATIONAL ELECTRICAL CODE AND/OR OTHER LOCAL ELECTRICAL CODES. PLUMBING CONNECTIONS MUST COMPLY WITH APPLICABLE SANITARY SAFETY AND PLUMBING CODES.



SUGGESTED MINIMUM  
CLEARANCE FOR SERVICE  
ACCESS (BOTH ENDS)