

Quantity _____

C.S.I. Section 11400



701 S Ridge Avenue, Troy, OH 45374
1-888-4HOBART • www.hobartcorp.com

UW50 UTENSIL/PAN WASHER

STANDARD FEATURES

- 2.1 gallons of water per rack (booster equipped models)
- 19 racks per hour
- Timed wash cycles for 2, 4 or 6 minutes
- Stainless steel tank, tank shelf, chamber, trim panels, frame and feet
- Solid state heat controls
- Front loading, split-door configuration
- Flat-bottomed, stainless steel frame rack, with one flat grid rack and two tray support racks
- Chamber accepts 16 full-sized sheet pans, or 140-quart mixing bowl
- Two upper and two lower revolving, debossed non-clogging stainless steel wash arms
- Two upper and lower revolving stainless steel rinse arms
- Heavy-duty door and door hinges
- Large, removable stainless steel scrap screen and scrap bucket
- Choice of 10 KW electric, steam injector/steam coil or gas tank heat
- Adjustable wash cycle timer
- Stainless steel front panel
- Integrated detergent connections
- Top-mounted dial thermometers
- Door actuated drain closer
- Heavy-duty 5 H.P. motor
- Door interlock switch
- Corrosion-resistant impeller
- Timed fill
- Positive low water protection
- Spray hose (standard on electric booster heater equipped models only)

VOLTAGE

- ☐ 208/60/3
- ☐ 240/60/3
- ☐ 480/60/3

MODEL

- ☐ UW50

OPTIONS AT EXTRA COST

- ☐ 10 KW electric tank heat
- ☐ Natural or LP gas tank heat
- ☐ 14 KW electric booster heater
- ☐ Vent fan control
- ☐ Steam injector or steam coil tank heat

ACCESSORIES

- ☐ Power vent fan kit
- ☐ Drain water tempering kit
- ☐ Rack insert for 30" trays
- ☐ Spray hose assembly (field installed for non-booster equipped machines only)
- ☐ Operator training video
- ☐ 20" x 20" peg or combination racks

Specifications, Details and Dimensions on Inside and Back.



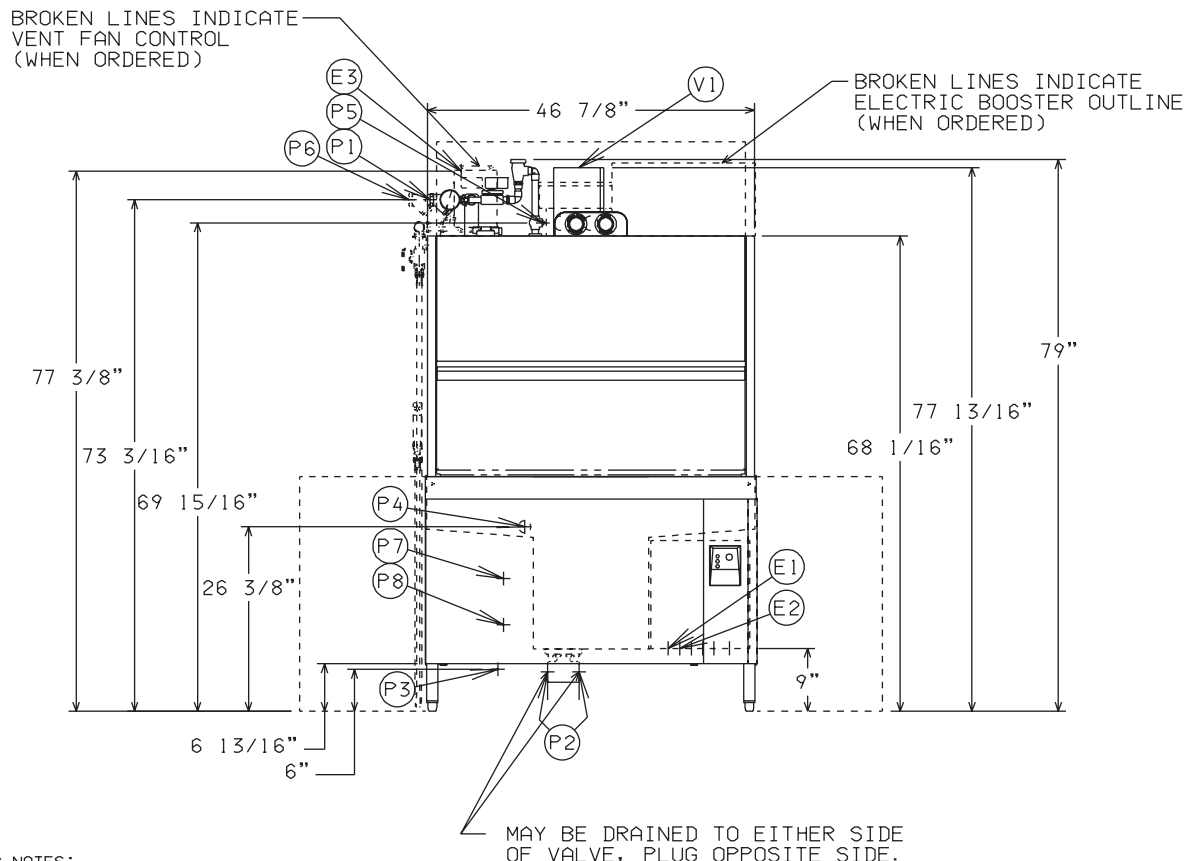
UW50 UTENSIL/PAN WASHER

UW50 UTENSIL/PAN WASHER

HOBART

 701 S Ridge Avenue, Troy, OH 45374
 1-888-4HOBART • www.hobartcorp.com

DETAILS & DIMENSIONS – STEAM INJECTOR/STEAM COIL



PLUMBING NOTES:

WATER HAMMER ARRESTOR (MEETING ASSE-1010 STANDARD OR EQUIVALENT) TO BE SUPPLIED (BY OTHERS) IN COMMON WATER SUPPLY LINE AT SERVICE CONNECTION.

RECOMMENDED WATER HARDNESS TO BE 4-6 GRAINS FOR BEST RESULTS.

RECOMMENDED BUILDING FLOWING WATER PRESSURE TO THE DISHWASHER IS 20-25 PSI. IF PRESSURES HIGHER THAN 25 PSI ARE PRESENT, A PRESSURE REGULATING VALVE MUST BE SUPPLIED (BY OTHERS) IN THE WATER LINE TO THE DISHWASHER.

PRESSURE REGULATOR FURNISHED WHEN ELECTRIC BOOSTER IS ORDERED.

FOR CONVENIENCE WHEN CLEANING, WATER TAP SHOULD BE INSTALLED NEAR MACHINE WITH HEAVY DUTY HOSE AND SQUEEZE VALVE.

FLOWING STEAM PRESSURES ABOVE 50 PSI MUST HAVE A PRESSURE REGULATOR (NOT SUPPLIED) INSTALLED IN THE STEAM LINE

SHUT OFF VALVE MUST BE SUPPLIED (BY OTHERS) IN THE STEAM LINE TO THE DISHWASHER

MISCELLANEOUS NOTES:

ALL DIMENSIONS TAKEN FROM FLOOR LINE MAY BE INCREASED BY UP TO 1-1/8" WITH LEG ADJUSTMENT.

NET WEIGHT OF MACHINE: 640 LBS. W/O BOOSTER
DOMESTIC SHIPPING WEIGHT: 782 LBS. W/O BOOSTER

NET WEIGHT OF MACHINE: 704 LBS. W/ BOOSTER
DOMESTIC SHIPPING WEIGHT: 846 LBS. W/ BOOSTER

SHIPPING DIMENSIONS:
60" X 38" X 83" HIGH.

SIZE OF RACKS:
40-7/8" X 22-7/8" X 4-1/8"

DRAIN LEVER LOCATED INSIDE TANK.

CONNECTION INFORMATION (*AFF - ABOVE FINISHED FLOOR)

LEGEND

- E1 ELECTRICAL CONNECTION (MOTOR & CONTROLS): 1-1/4" CONDUIT HOLE, 9" AFF.
- E2 ELECTRIC CONNECTION-DETERGENT/RINSE AGENT FEEDERS: 1/2" CONDUIT HOLE; 9" AFF
- E3 ELECTRIC CONNECTION-VENT FAN CONTROL (WHEN ORDERED): 3/4" CONDUIT HOLE; 77-3/8" AFF
- P1 COMMON WATER CONNECTION: 180°F WATER MIN., 3/4" FPT, 73-3/16" AFF.
- P2 DRAIN: 2" FPT, 5-5/8" AFF TWO CONNECTIONS.
- P3 STEAM INJECTOR: 10 TO 25 PSI FLOWING, 50 PSI MAX.; 3/4" FPT; 6" AFF.
- P4 DETERGENT PROBE SENSOR: REMOVE CAP AND STUD ASSEMBLY TO ACCESS 7/8" HOLE, 26-3/8" AFF
- P5 RINSE AGENT FEEDER: 1/8" NPT, REMOVE 1/8" NPT PIPE PLUG TO ACCESS TAPPED HOLE; 69-15/16" AFF.
- P6 COMMON WATER CONNECTION WITH ELECTRIC BOOSTER (WHEN ORDERED): 140°F MIN., 3/4" FPT, 73-3/16" AFF.
- P7 STEAM COIL : 10 TO 25 PSI FLOWING, 50 PSI MAX., 3/4" FPT, 19" AFF.
- P8 CONDENSATE RETURN: 10 TO 50 PSI FLOWING, 3/4" FPT, 12-3/8" AFF. (BUCKET TYPE TRAP FURNISHED).
- V1 VENT EXIT: 7" X 11" X 10" HIGH TO ALLOW FOR EXPANSION OF AIR. (NEED NOT BE CONNECTED TO EXTERNAL VENT); IF REQUIRED, VENT HOOD TO PROVIDE 400 CFM EXHAUST.

SINGLE POINT ELECTRIC CONNECTION UW-50 WITH STEAM HEAT (CONTROLS AND SHP PUMP MOTOR)				
ELEC. SPECS.	RATED AMPS	MINIMUM SUPPLY CIRCUIT CONDUCTOR CAPACITY	MINIMUM OVERCURRENT PROTECTIVE DEVICE	MAXIMUM OVERCURRENT PROTECTIVE DEVICE
208/60/3	20.3	25	25	25
240/60/3	17.6	25	25	25
480/60/3	9.2	15	15	15

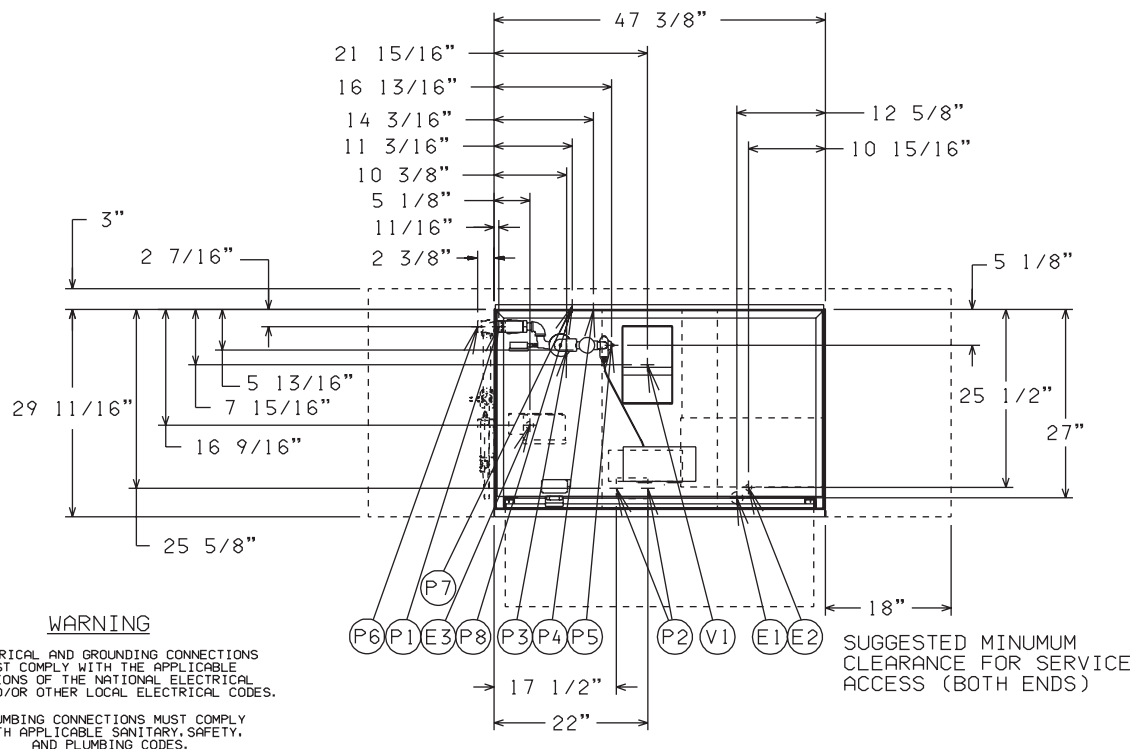
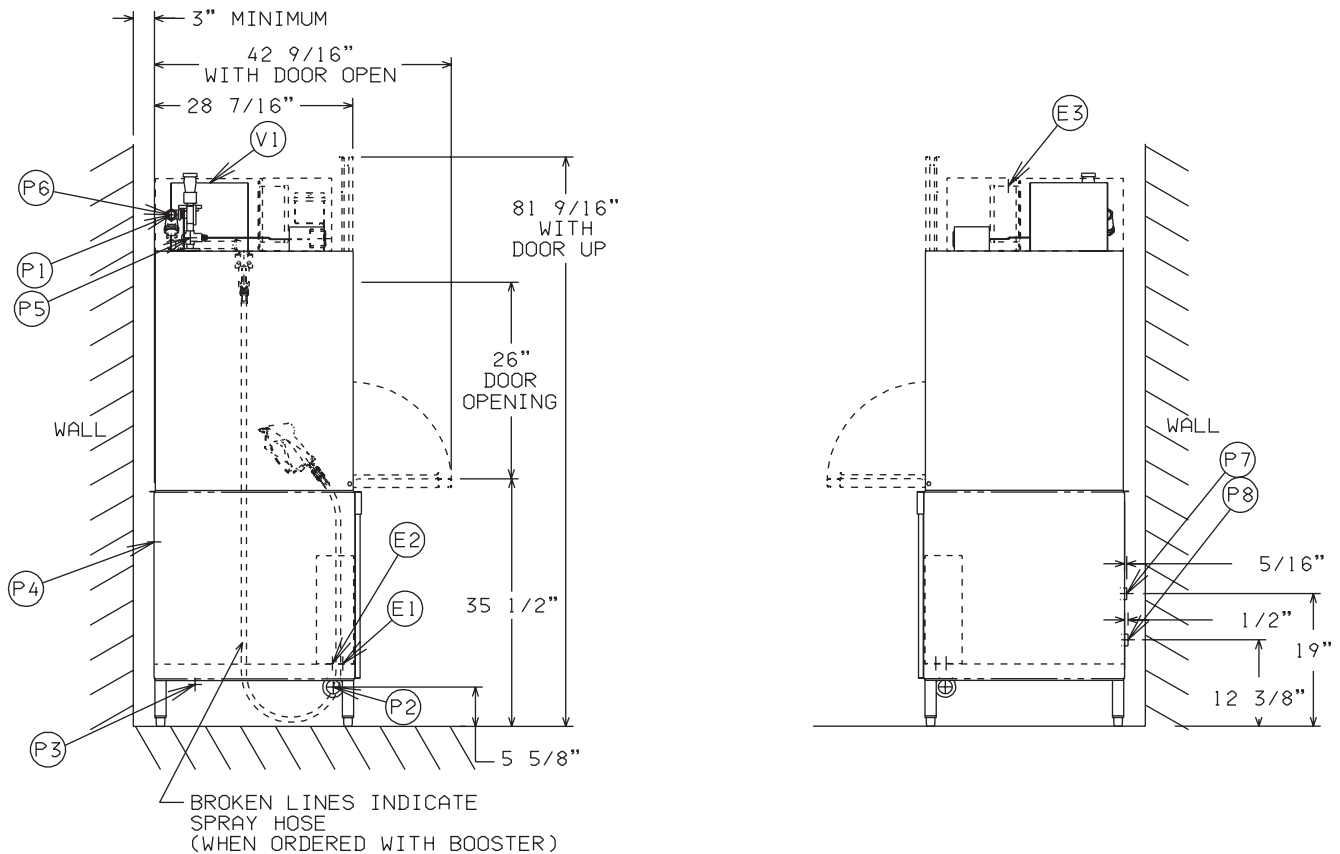
SINGLE POINT ELECTRIC CONNECTION UW-50 WITH STEAM HEAT AND 14KW ELECTRIC BOOSTER (CONTROLS AND SHP PUMP MOTOR)				
ELEC. SPECS.	RATED AMPS	MINIMUM SUPPLY CIRCUIT CONDUCTOR CAPACITY	MINIMUM OVERCURRENT PROTECTIVE DEVICE	MAXIMUM OVERCURRENT PROTECTIVE DEVICE
208/60/3	60.3	80	80	80
240/60/3	52.3	70	70	70
480/60/3	26.4	35	35	35



701 S Ridge Avenue, Troy, OH 45374
1-888-4HOBART • www.hobartcorp.com

UW50 UTENSIL/PAN WASHER

DETAILS & DIMENSIONS – STEAM INJECTOR/STEAM COIL



UW50 UTENSIL/PAN WASHER



701 S Ridge Avenue, Troy, OH 45374
1-888-4HOBART • www.hobartcorp.com

SPECIFICATIONS

DESIGN: Heavy-duty, fully automatic, front-loading utensil/pan washer with large split door system. Upper door section slides upward as the lower door section is pulled down. Stainless steel pull-out rack allows easy loading for large utensils and pans. Three variable wash cycles ensure thorough cleaning and sanitizing.

CONSTRUCTION: Stainless steel tank and hood, frame, legs and adjustable feet. Front enclosure panel standard.

PUMP: Cast iron pump integral with motor, Ni-Resist impeller, horizontally mounted. Pump capacity 343 gpm.

MOTOR: 5 H.P., available in 208/60/3, 240/60/3, or 480/60/3 configurations. Factory sealed lubrication, drip proof with sealed ball bearings. Thermal overload protection.

RACKS PER HOUR:

Wash Cycle	Racks/Hr.
2 minute	19
4 minute	12
6 minute	9

WASH CYCLE: Complete automatic operation. Cycle may be interrupted any time by opening door. The selected cycle will restart from the beginning when door is closed again.

Upper and lower revolving stainless steel wash arms, with computer designed, debossed, anti-clog wash nozzles, direct high pressure wash flow to all soiled surfaces.

Large, sloping, perforated, removable stainless steel scrap screens direct food soils to a deep perforated stainless steel scrap basket.

Scrap basket and strainer easily removed.

RINSE CYCLE: 180°F final sanitizing rinse through two upper and two lower revolving stainless steel rinse arms. Rinse arms removable without tools.

WATER USAGE PER RACK:

- 2.1 gallons per rack (booster equipped models)
- 2.2 gallons per rack (non-booster equipped models)

RACKING: Standard rack assortment consists of one flat-bottomed frame rack, one flat grid insert rack, and two tray support insert racks. External rack dimensions are 40 $\frac{7}{8}$ " wide, 22 $\frac{7}{8}$ " deep, and 4 $\frac{1}{8}$ " high.

Standard flat-bottomed frame rack also accepts (2) 20" x 20" combination or peg racks per cycle.

SPECIFICATIONS: Listed by Underwriters Laboratories Inc., NSF International and CUL.

As continued product improvement is a policy of Hobart, specifications are subject to change without notice.

Scrap Collector



Job: _____

Item No.: _____

Model S914



Job: _____

Item No.: _____

Model P914



A Scrapping, Pre-Flushing and Food Waste Collecting System

- Standard Scrap Basin, Model S914
- Pot/Pan Scrap Basin, Model P914

Widely accepted in areas that restrict the use of food waste disposers.

An Economical Pulper Alternative, the Collector washes soluble food waste harmlessly through the sewer, reducing bulk food waste by as much as 50% and weight by as much as 80%.

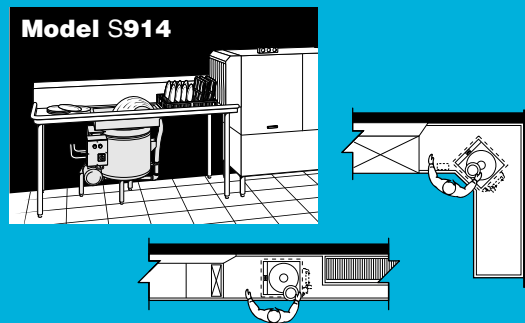
Recirculated Water used for pre-flushing typically reduces water and sewer costs dramatically. The Collector consumes only 2 gallons of new water per minute while the pre-flushing water plume recirculates at a 30-gallon rate.

Scrapping Speed is more than doubled compared to an overhead pre-rinse since the worker's hands are free for scrapping. The Collector lets you keep up with small to medium size conveyor dishmachines.

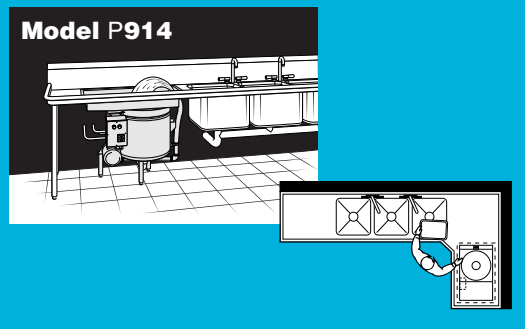
Problem Dishes, Trays and Cookware with dried or baked-on food need much less hand work. They can be soaked in the Collector basin while scrapping continues on other dishes.

TYPICAL INSTALLATIONS

Model S914



Model P914





Scrap Collector Model S914

Pot/Pan Scrap Collector Model P914

Model S914

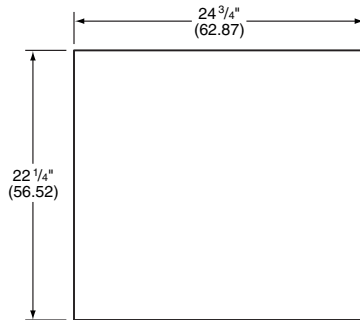
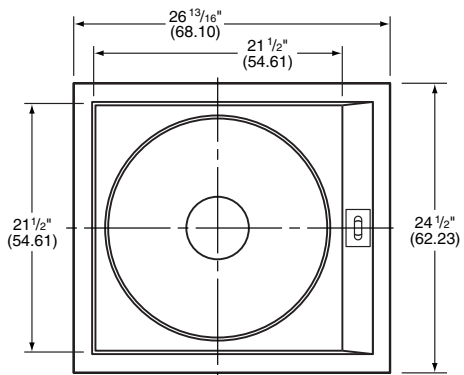


TABLE CUTOUT DETAIL



TOP VIEW

Model P914

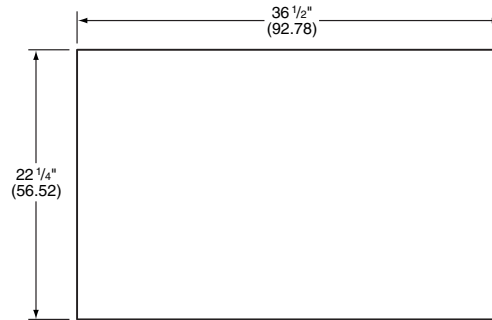
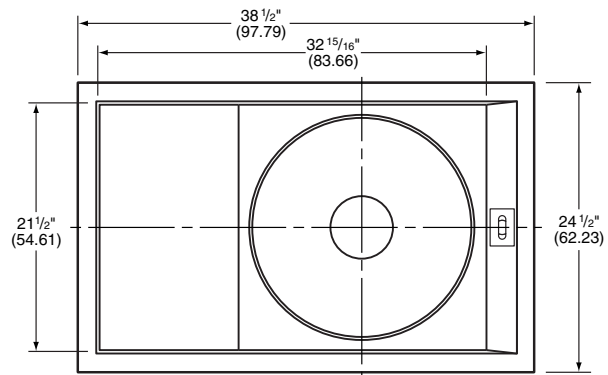


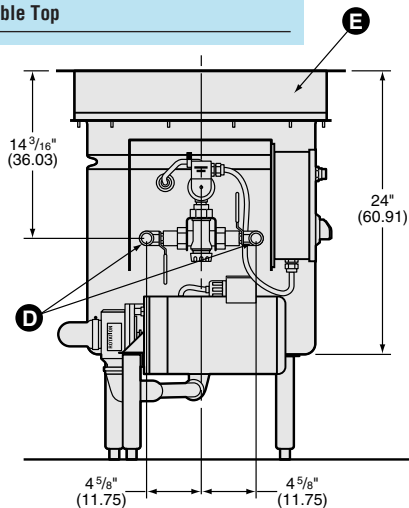
TABLE CUTOUT DETAIL



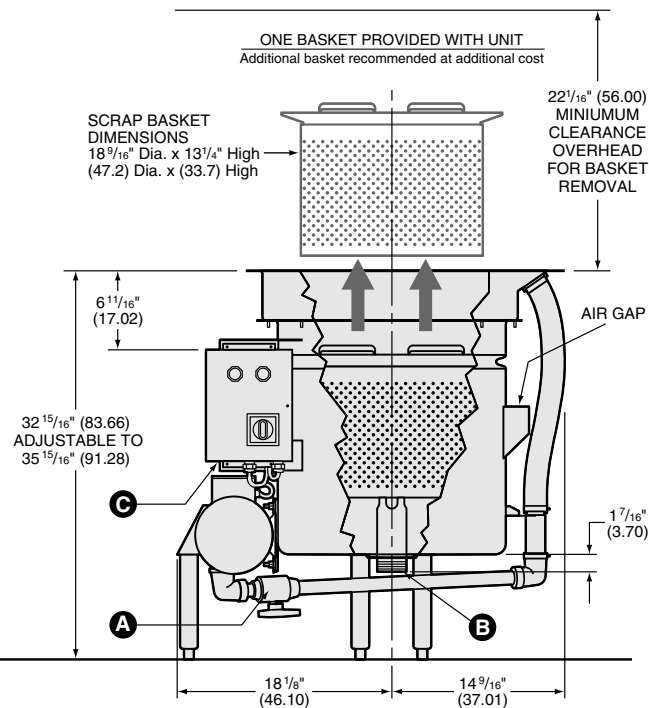
TOP VIEW

Collector Legend

- A** Plume height adjustment valve
- B** Tank drain 2" NPT
- C** 1/2" conduit knockout electrical connection
- D** Hot/cold shutoff valves 1/2" NPT
- E** Removable Top



LEFT SIDE VIEW



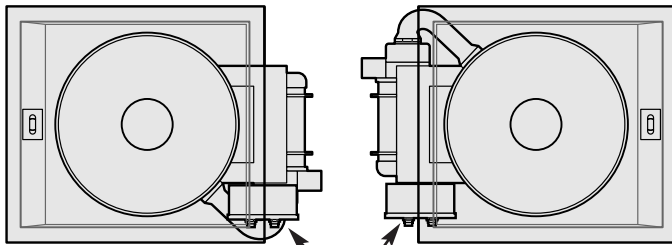
FRONT VIEW

Model S914 shown - P914 similar



Scrap Collector Model S914

Pot/Pan Scrap Collector Model P914

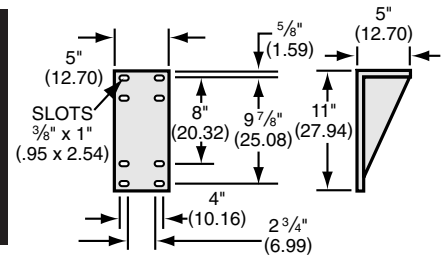


MSS-LD Control

The MSS-LD control can be mounted on either side of the Collector with existing fasteners, mounting holes and wiring for left or right hand operation.

#980104

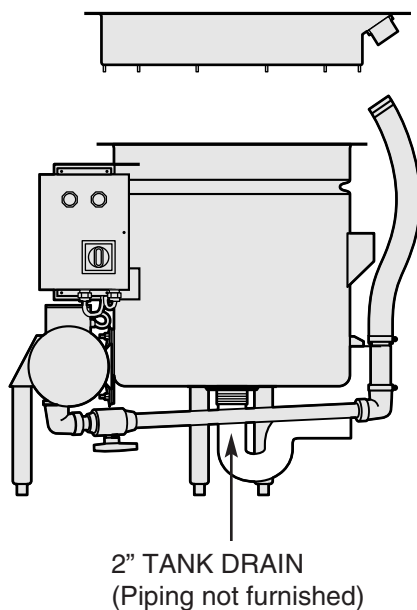
MSS-LD Mounting Bracket



The control can be mounted remotely using optional mounting bracket.

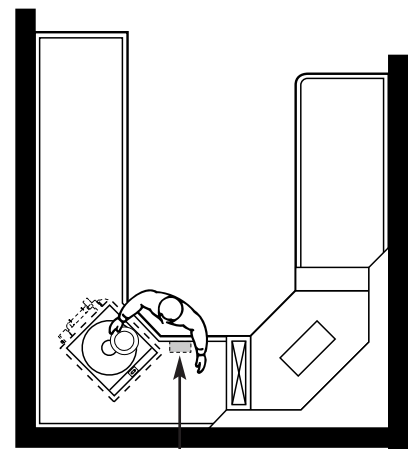
Note: additional field wiring is necessary.

Upon request, the Collector top may be shipped separately to an alternate location for fabrication.

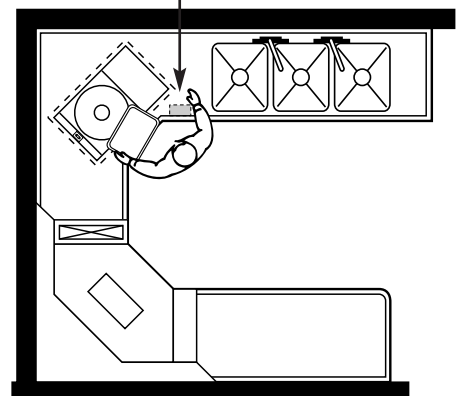


Model S914 shown - P914 similar

ALL CONNECTIONS ARE TO BE MADE BY QUALIFIED PERSONNEL WHO WILL OBSERVE ALL LOCAL AND NATIONAL CODES.



Remote Mounting
of MSS-LD Control



NOTE: Dimensions in parenthesis are in centimeters

Salvajor Scrap Collector

MODEL S914 & Model P914

S P E C I F I C A T I O N S

CONSTRUCTION

- Tank - 2 Piece Stainless Steel
- Adjustable Legs - Stainless Steel
- Control Panel - Stainless Steel
- Salvage Basin - High Impact Polymer
- Scrap Basket - High Impact Polymer

ELECTRICAL

- Pre-wired NEMA 4 Control Panel
- Watertight Conduit/Fittings
- Separate Component Grounding
- Thermally Protected Motor
- Safety Line Disconnect

PLUMBING

- Corrosion Resistant Components
- Automatic Water Blender
- Solenoid Valve
- Unions
- Check Valves
- Incoming Water Valves
- Non-clogging Pump Design
- Backflow Prevention Device

ACCESSORIES

- ☐ Remote Start-Stop
- ☐ Remote Mounting Bracket
- ☐ Correctional Package
- ☐ MSS-LD Mounting Bracket
- ☐ Additional Scrap Basket

VOLTAGES AVAILABLE

(SPECIFY EXACT OPERATING VOLTAGE)

- ☐ 115V ☐ 208V ☐ 230V, 60 Cycle, 1 Phase
☒ 208V ☐ 230V ☐ 460V, 60 Cycle, 3 Phase

Pump Motor 3/4 HP

FULL LOAD AMPS

(SPECIFY EXACT OPERATING VOLTAGE)

1 PHASE			3 PHASE		
115V	208V	230V	208V	230V	460V
11	5.5	5.5	3.2	3	1.5

UTILITIES REQUIRED

1. Electric service
2. 3/4" hot and cold water supply and reduce to 1/2" at connection.
3. 2" tank drain.

(Specifications subject to change without notice.)

SAMPLE SPECIFICATIONS

Unit shall be a Scrap Collector (or Pot/Pan Scrap Collector) scrapping, pre-flushing and food waste collecting system with recirculating water as manufactured by Salvajor.

Model S914 (or **P914**), ____ Volts, 60Hz, ____ Phase.

Furnished with a pre-wired control panel and stainless steel NEMA 4 watertight enclosure.



The Salvajor Company 4530 East 75th Terrace Kansas City, Missouri 64132-2081, USA

1-800-SALVAJOR

(816) 363-1030

FAX: 1-800-832-9373

www.salvajor.com

Email: sales@salvajor.com

service@salvajor.com

Manufacturers of Commercial Food Waste Disposing Systems since 1944