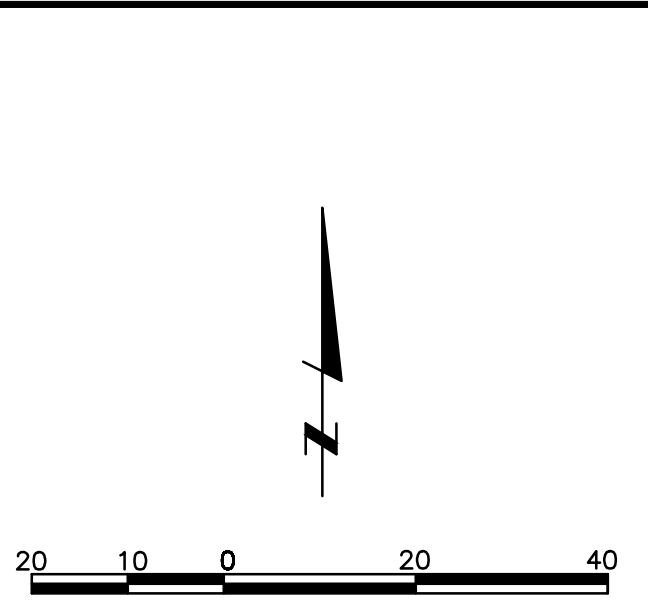
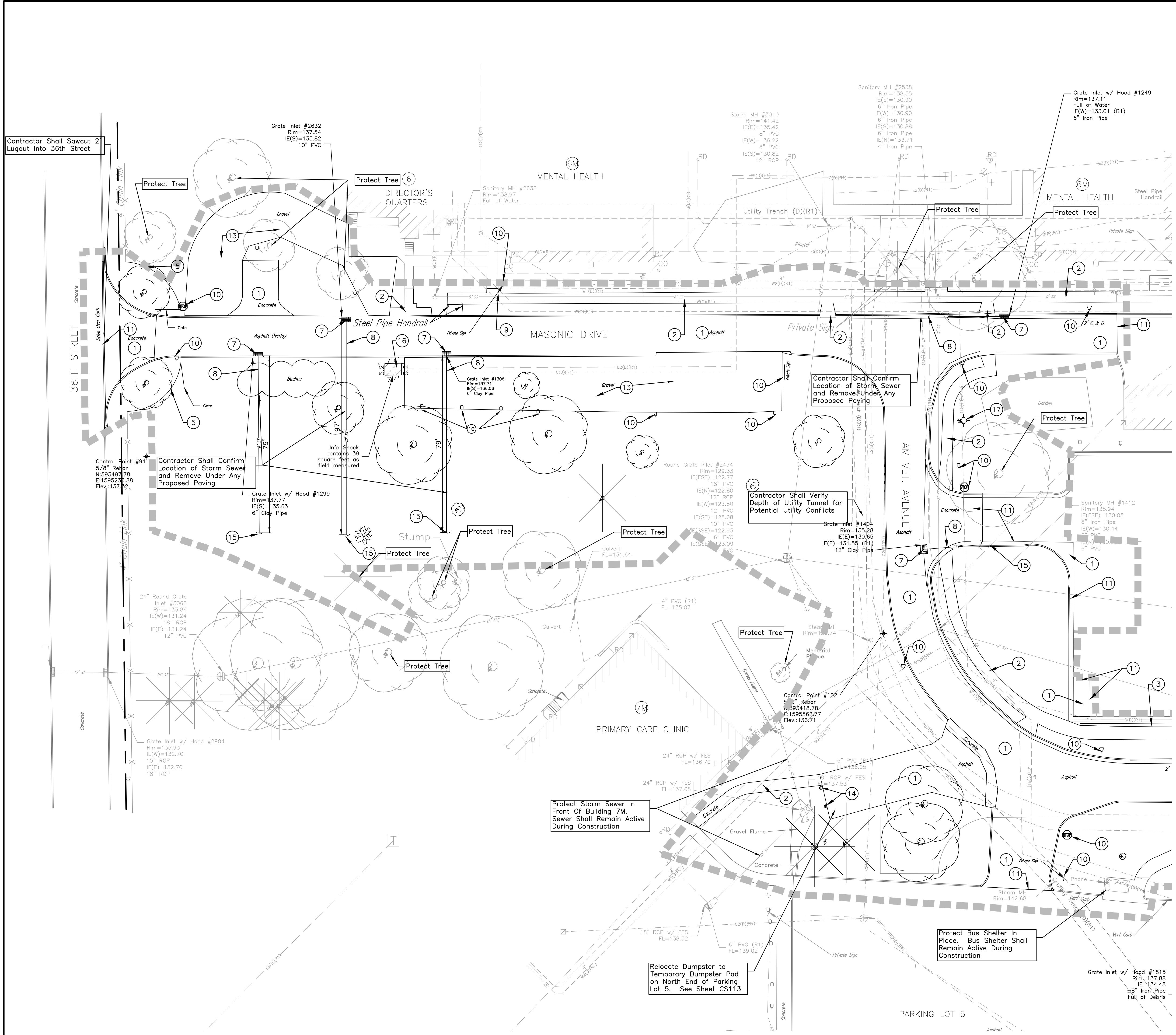


three inches = one foot
one and one half inches = one foot
one inch = one foot
three quarters inch = one foot
one half inch = one foot
three eighths inch = one foot
one quarter inch = one foot
one eighth inch = one foot



- REMOVAL NOTES**
- The CONTRACTOR shall notify the OWNER 72 hours in advance if existing utilities conflict with new construction or if temporary outages are anticipated, including but not limited to water, gas, power, cable television and telephone.
 - The CONTRACTOR shall protect all existing utilities and shall be responsible for any and all damages to utilities that are permitted to remain in place. Damages due directly or indirectly to the CONTRACTOR'S operations shall be promptly repaired to the satisfaction of the ENGINEER and the OWNER of the property, or shall make payment to such OWNERS for repairs as may become necessary on account of damages that are due to his operations.
 - The CONTRACTOR shall make himself aware of all of the permanent and temporary utility appurtenances in their present and/or relocated positions. No additional compensation will be allowed for any delays, inconvenience, or damage sustained due to interference from the said utility appurtenances or the operation of disconnecting them, including the possibility of uncovering utilities that have been abandoned and/or are not indicated.
 - All demolition rubbish will be removed from the site by a licensed trucking firm, in covered trucks, and taken to a licensed landfill. All this will be paid for by the CONTRACTOR and will be part of the CONTRACTOR'S base bid.
 - Coordination with fire departments and utility companies shall be the responsibility of the CONTRACTOR.
 - Burning of materials will NOT be permitted.
 - The OWNER shall be given two week notice before any entrance or access drive closures.
 - The limits of removals shown on the drawings are approximate. The exact limits will be marked in the field by the ENGINEER. All Vegetation and Trees within the Limits of Removal shall be removed unless called out to be protected.
 - CONTRACTOR shall first coordinate removal of any existing utility with utility owner (gas, water, power, etc.). All telephones, water, electric and gas meters, and associated equipment shall remain the property of the OWNER.

- REMOVAL KEYNOTES**
- Remove Pavement
 - Remove Sidewalk To Nearest Joint
 - Remove Retaining Wall
 - Remove and Relocate Power Pole (See Sheet CS107)
 - Remove Fence and Gate
 - Remove Street Light (See Sheet CS107). Coordinate with Electrical Plans
 - Remove Storm Intake
 - Remove Storm Sewer Under Pavement To Be Removed, Storm Sewer Outside Limits of Paving Shall Be Abandoned
 - Remove Stairs and Railings
 - Remove and Salvage Sign. CONTRACTOR Shall Catalog Sign Type and Location, and Coordinate with OWNER on Reinstall
 - Sawcut Pavement Full Depth and in Straight Lines
 - Remove Trailer, Deck and Metal Stairs, Including Utility Services (Sanitary, Water, Power, etc.) (See Sheet CS107)
 - Remove Gravel
 - Remove Ballard
 - Abandon Storm Sewer
 - Remove and Salvage Guard/Info Shack. Coordinate with OWNER. See Sheet CS113 for New Location
 - Remove and Relocate Water Hydrant and Valve. Construction of Relocated Hydrant and Valve Shall Be in Accordance With SUDAS. Hydrant Shall Be 2' Clear of Proposed Sidewalk

100% CONSTRUCTION DOCUMENTS - NOT FOR CONSTRUCTION

CONSULTANTS: 14710 West Dodge Road, Suite 100 Omaha, Nebraska 68154-2027 402.496.2498 P 402.496.2730 F www.LRA-Inc.com		ARCHITECT/ENGINEERS: 21 Delta Engineers, LLC 3824 North 108th Street Omaha, Nebraska 68164 PH: (402) 496-4115 Fax: (402) 493-2744		Drawing Title REMOVAL PLAN - WEST		Project Title UPGRADE ROADWAY, PARKING PHASE I DESIGN		Project Number 636A6-11-301 Building Number		VACIHCS 3600 30th ST Des Moines, Iowa 	
Revisions				Approved COTR		Location DES MOINES VA MEDICAL CENTER		Drawing Number CS106		Dwg. 7 of 24	
						Date MARCH 29, 2012		Checked SRL		Drawn PCH	