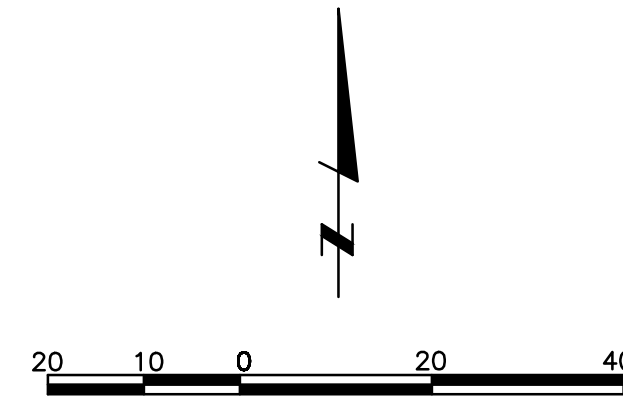
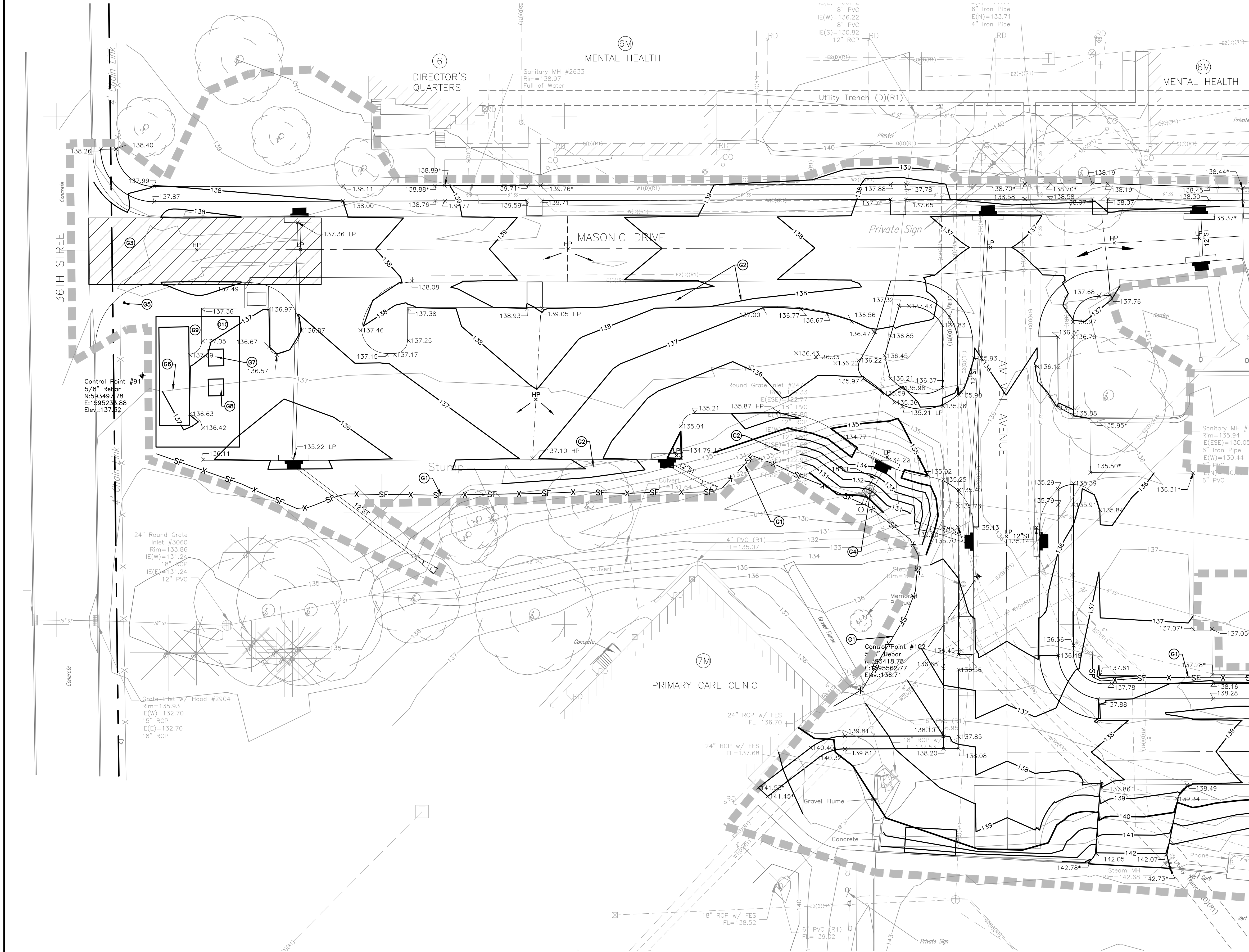


L:\Engineering\0111089\Drawings\Production\011190A107.dwg, 3/20/2012 2:41:17 PM, DataS, 11, Lamp, Ryneason & Associates

three eighths inch = one foot
one eighth inch = one foot
one quarter inch = one foot
one half inch = one foot
three quarters inch = one foot
one inch = one foot
one and one half inches = one foot
two inches = one foot
three inches = one foot



ELEVATION NOTES

- Proposed contours are finished grade/top of pavement elevations. Not subgrade elevations.
- ALL SPOT ELEVATIONS IN PAVEMENT ARE TOP OF SLAB UNLESS NOTED OTHERWISE.
- All areas receiving more than 3 feet of fill shall have a 2 week delay before beginning paving operations.
- Slopes steeper than 5:1 should be benched before placing fill.
- See Sheets CS116 and CS117 for paving plan and profile information on Masonic Drive and AM Vet Avenue.

GRADING KEYNOTES:

- CONTRACTOR Shall Construct, Maintain And Clean Out Silt Fence As Shown Per Figure 9040.19 Of SUDAS. Upon Completion Of Seeding, Mulching and Installation Of Temporary Rolled Erosion Control, Contractor Shall Remove Silt Fence.
- The CONTRACTOR Shall Install Temporary Rolled Erosion Control Products Type 2 On All Areas Greater Than 4:1 Slope, Per Figure 9040.3 Of SUDAS. TREC Shall Only Be Used If Using Seed Instead Of Sod.
- The CONTRACTOR Shall Install And Maintain A Stabilized Construction Entrance Location Per Figure 9040.20 Of The SUDAS.
- CONTRACTOR Shall Install And Maintain Surface-Applied Intake Protection Device During All Phases Of Construction. Protection Measures Must Be Approved By The INSPECTOR Or The ENGINEER Prior To Installation.
- The CONTRACTOR Shall Install And Maintain A SWPPP Notification Sign. See Detail, Sheet CS110. Separate Payment Shall Not Be Made For SWPPP Notification Sign.
- Proposed Job Trailer Location If Necessary; Alternate Locations Must Be Approved By The ENGINEER And The SWPPP Shall Be Modified To Reflect Change. Separate Payment Shall Not Be Made For Job Trailer.
- Proposed Sanitary Waste Receptacle Location If Necessary; Any Alternate Location Must Be Approved By The ENGINEER And The SWPPP Modified To Reflect The Change. Separate Payment Shall Not Be Made For Sanitary Waste Receptacle.
- Proposed Solid Waste Receptacle Location If Necessary; Any Alternate Location Must Be Approved By The ENGINEER And The SWPPP Modified To Reflect The Change. Separate Payment Shall Not Be Made For Solid Waste Receptacle.
- Proposed Designated Vehicle And Equipment Fueling Area Location If Necessary; Any Alternate Location Must Be Approved By The ENGINEER And The SWPPP Modified To Reflect The Change. Separate Payment Shall Not Be Made For Vehicle And Equipment Fueling Area.
- Proposed Material Delivery And Storage Area Location If Necessary; Any Alternate Location Must Be Approved By The ENGINEER And The SWPPP Modified To Reflect The Change. Separate Payment Shall Not Be Made For Material Delivery And Storage Area.

COMPACTION REQUIREMENTS TABLE

See Geotechnical Engineering Report:	Geotechnical Assessment Parking Lot and Roadway Upgrade-Phase I VA636A6-11-301		
Prepared By:	Aquaterra Environmental Solutions, Inc 402-884-6202		
Engineer:	John Hartwell, PE, CHMM		
Project No:	4963.10		
Dated:	November 7, 2011		
Max. Depth Of Lift For Fill (Measured Loose)	8"		
AREA	TEST	COMPACTION	MOISTURE
Utility Trench Backfill	Standard Proctor	95%	-0/+4
PCC Pavement Subgrade (Upper 12")	Standard Proctor	95%	-2/+2
Manhole + Structure Backfill (Full Depth)	Standard Proctor	95%	-0/+4
Sidewalk Subgrade (Upper 6")	Standard Proctor	95%	-0/+4
All Other Fill	Standard Proctor	95%	-0/+4

Notes:

- Standard Proctor Shall Be Determined In Accordance With ASTM D 698.
- Modified Proctor Shall Be Determined In Accordance With ASTM D 1557.

*Compaction and Moisture Requirements per SUDAS

100% CONSTRUCTION DOCUMENTS - NOT FOR CONSTRUCTION

L:\Engineering\0111089\Drawings\Production\011190A107.dwg		CONSULTANTS:		ARCHITECT/ENGINEERS:		Drawing Title GRADING PLAN - WEST		Project Title UPGRADE ROADWAY, PARKING PHASE I DESIGN		Project Number 636A6-11-301		VACIHCS 3600 30th ST Des Moines, Iowa	
		LAMP RYNEARSON & ASSOCIATES 14710 West Dodge Road, Suite 100 Omaha, Nebraska 68154-2027 www.LRA-Inc.com		21 Delta Engineers 21 Delta Engineers, LLC 3824 North 108th Street Omaha, Nebraska 68164 PH: (402) 496-4115 Fax: (402) 493-2744		Approved COTR		Location DES MOINES VA MEDICAL CENTER		Building Number		Drawing Number CS108	
Revisions		Date						Date MARCH 1, 2012		Checked SRL		Drawn PCH	
										Dwg. 9 of 24		Department of Veterans Affairs	