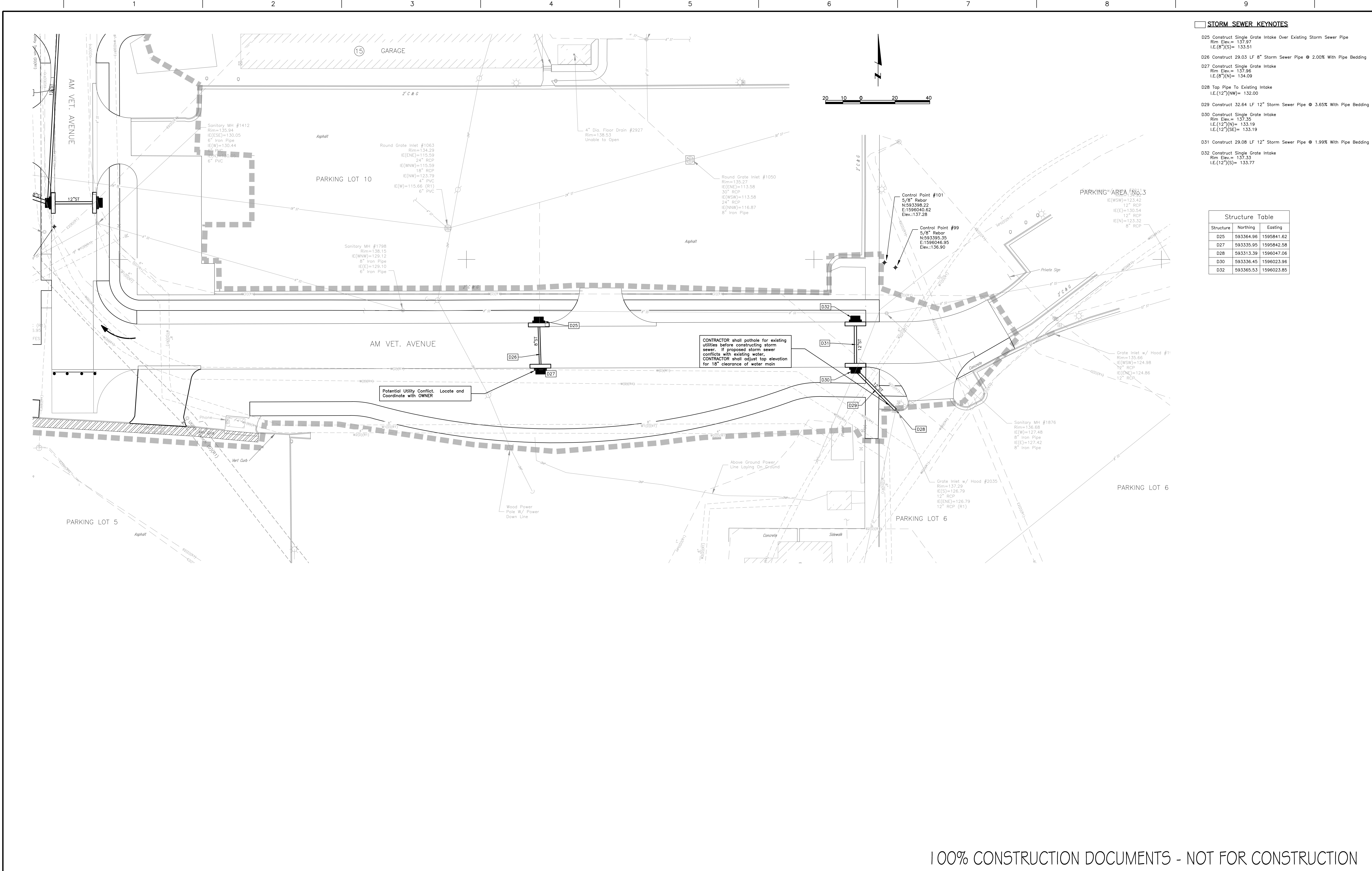


L:\Engineering\0111089\Drawings\Production\011190A109.dwg 3/29/2012 2:15:27 PM, DavaS, T.L. Lamp, Ryneason & Associates

three eighths inch = one foot
one eighth inch = one foot
one quarter inch = one foot
three quarters inch = one foot
one half inch = one foot
one inch = one foot
one and one half inches = one foot
two inches = one foot
three inches = one foot



STORM SEWER KEYNOTES

- D25 Construct Single Grate Intake Over Existing Storm Sewer Pipe
Rim Elev.= 137.97
I.E.(8")(S)= 133.51
- D26 Construct 29.03 LF 8" Storm Sewer Pipe @ 2.00% With Pipe Bedding
Rim Elev.= 137.96
I.E.(8")(N)= 134.09
- D28 Tap Pipe To Existing Intake
I.E.(12")(NW)= 132.00
- D29 Construct 32.64 LF 12" Storm Sewer Pipe @ 3.65% With Pipe Bedding
Rim Elev.= 137.35
I.E.(12")(N)= 133.19
I.E.(12")(SE)= 133.19
- D31 Construct 29.08 LF 12" Storm Sewer Pipe @ 1.99% With Pipe Bedding
Rim Elev.= 137.33
I.E.(12")(S)= 133.77

Structure Table		
Structure	Northing	Easting
D25	593364.96	1595841.62
D27	593335.95	1595842.58
D28	593313.39	1596047.06
D30	593336.45	1596023.96
D32	593365.53	1596023.85

100% CONSTRUCTION DOCUMENTS - NOT FOR CONSTRUCTION

CONSULTANTS: LAMP RYNEARSON & ASSOCIATES 14710 West Dodge Road, Suite 100 Omaha, Nebraska 68154-2027 402.496.2498 P 402.496.2730 F www.LRA-Inc.com		ARCHITECT/ENGINEERS: 21 Delta Engineers 21 Delta Engineers, LLC 3824 North 108th Street Omaha, Nebraska 68164 PH: (402) 496-4115 Fax: (402) 493-2744		Drawing Title STORM SEWER PLAN - EAST	Project Title UPGRADE ROADWAY, PARKING PHASE I DESIGN	Project Number 636A6-11-301	VACIHCS 3600 30th ST Des Moines, Iowa Department of Veterans Affairs
Revisions		Date		Approved COTR	Location DES MOINES VA MEDICAL CENTER	Drawing Number CS112	
					Date MARCH 29, 2012	Checked SRL	