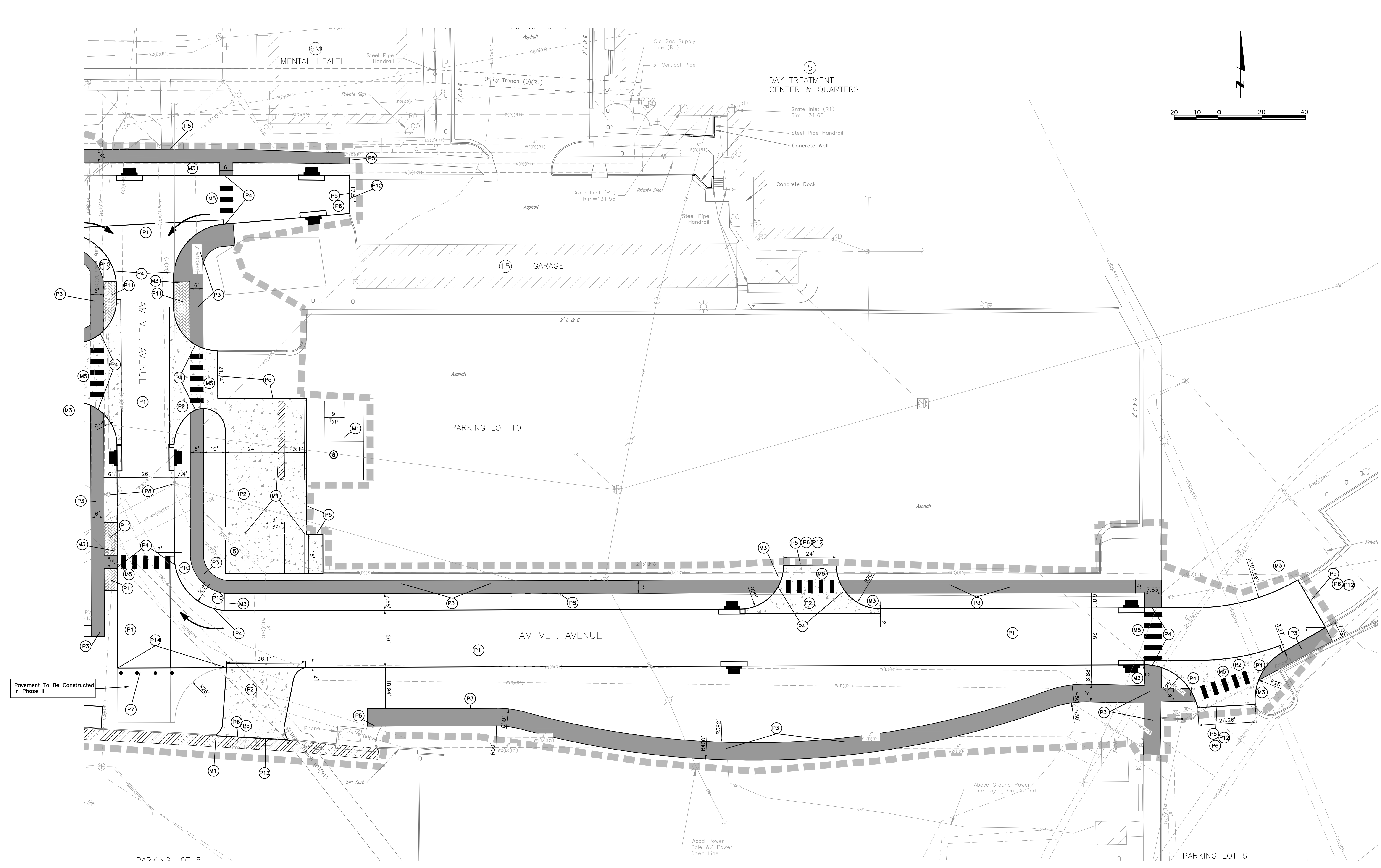
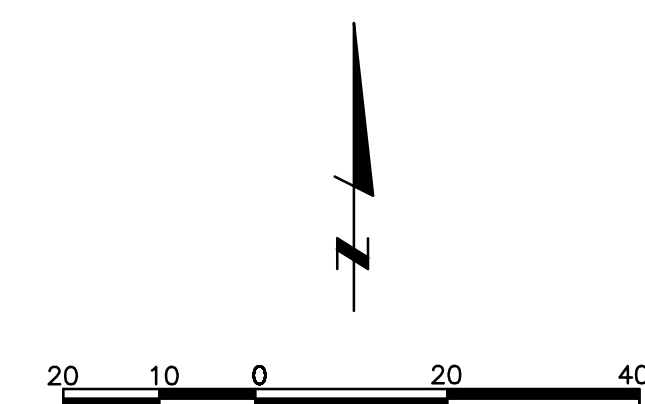


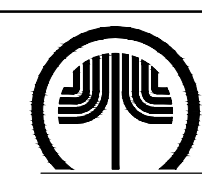
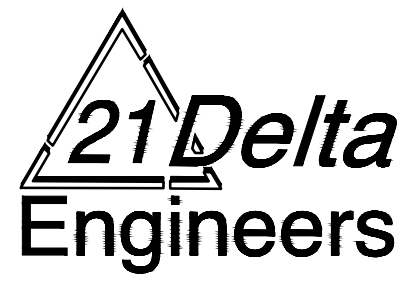

three inches = one foot
one and one half inches = one foot
one inch = one foot
three quarters inch = one foot
one half inch = one foot
three eighths inch = one foot
one quarter inch = one foot
one eighth inch = one foot
one sixteenth inch = one foot



- PAVING KEYNOTES**
- P1. Construct 7" PC Concrete Pavement with Integral Curb and Gutter
 - P2. Construct 6" PC Concrete Pavement with Integral Curb and Gutter
 - P3. Construct 5" PC Concrete Sidewalk
 - P4. Construct Curb Ramp With Detectable Warning Panel per SUDAS
 - P5. Match Existing Pavement Edge
 - P6. Construct Thickened Edge
 - P7. Construct Barricade (See Detail Sheet CS120)
 - P8. Adjust Manhole To Grade
 - P9. Construct Temporary 4" PC Concrete Sidewalk
 - P10. Construct 7" PC Concrete Sidewalk
 - P11. Construct 7" PC Concrete Stamped Sidewalk. Sidewalk Stamp Shall Be Herringbone Pattern
 - P12. Mill 10' Of Existing Asphalt 2" Deep. Construct Asphalt Inlay and Match Pavement (See Detail Sheet CS120)
 - P13. Construct 7" Temporary Dumpster Pad For Building 7M (See Sheet CS113)
 - P14. Construct Temporary 6" Curb. Curb To Be Removed For Phase II Construction
- MISCELLANEOUS KEYNOTES**
- M1. Paint 4" Yellow Parking Stall/Island Striping (2' Spacing Typical for Striped Islands)
 - M2. Construct Handicap Stall Markings and Signage. One Stall Shall Be Van Accessible
 - M3. Construct Salvaged Sign and Post
 - M4. Locate Salvaged Guard/Info Shack With 6" PC Concrete Pad
 - M5. Paint 2' Wide, 6' Long White Pedestrian Crossing Stripes Spaced at 3' On Center



100% CONSTRUCTION DOCUMENTS - NOT FOR CONSTRUCTION

CONSULTANTS:  LAMP RYNEARSON & ASSOCIATES 14710 West Dodge Road, Suite 100 Omaha, Nebraska 68154-2027 402.496.2498 P 402.496.2730 F www.LRA-Inc.com		ARCHITECT/ENGINEERS:  21 Delta Engineers 21 Delta Engineers, LLC 3824 North 108th Street Omaha, Nebraska 68164 PH: (402) 496-4115 Fax: (402) 493-2744		Drawing Title PAVING PLAN - EAST	Project Title UPGRADE ROADWAY, PARKING PHASE I DESIGN	Project Number 636A6-11-301 Building Number
Revisions Date		Approved COTR		Location DES MOINES VA MEDICAL CENTER	Date MARCH 29, 2012	Checked SRL
				Drawn PCH	Drawing Number CS114 Dwg. 15 of 24	
VA FORM 08-6231				VACIHCS 3600 30th ST Des Moines, Iowa  Department of Veterans Affairs		