

L:\Engineering\0111089\Drawings\Production\011190A111.dwg, 3/20/2012 2:17:22 PM, DataS, 11, Lamo, Rynearson & Associates

three inches = one foot
one and one half inches = one foot
one inch = one foot
three quarters inch = one foot
one half inch = one foot
three eighths inch = one foot
one quarter inch = one foot
one eighth inch = one foot
one sixteenth inch = one foot

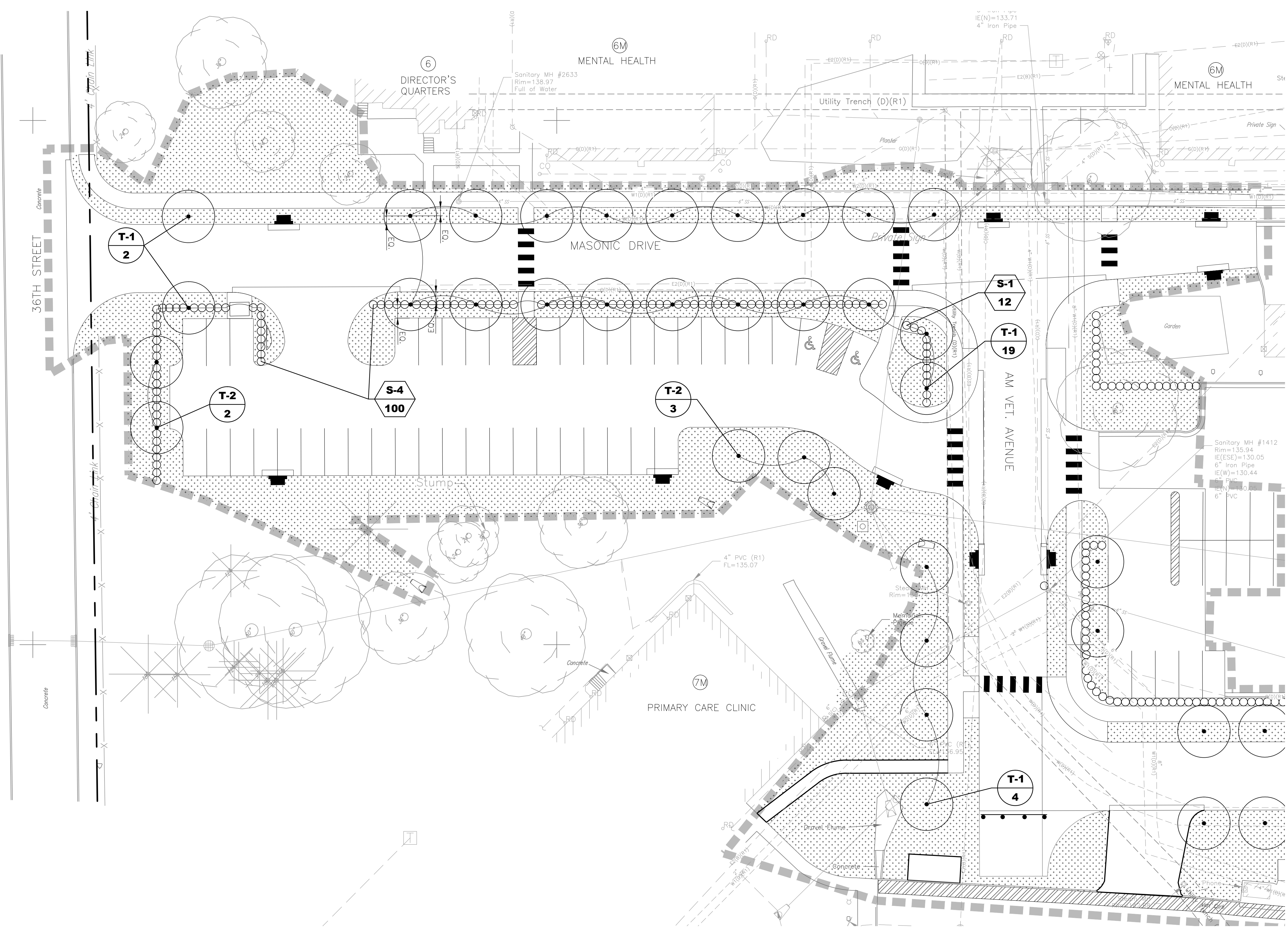
PLANTING LEGEND

Tree Code, See Legend For Genus-Species
Quantity

Shrub Code, See Legend For Genus-Species
Quantity

Existing Deciduous Tree And Size

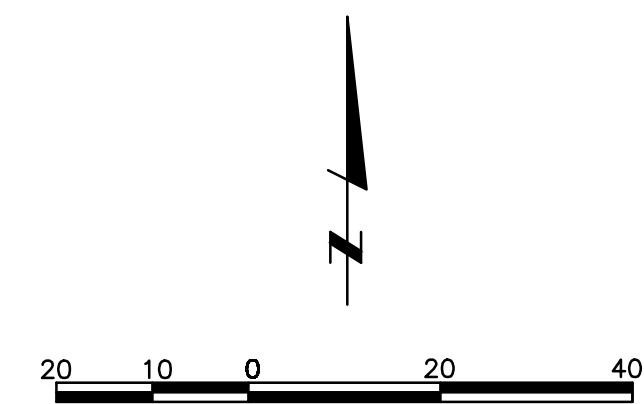
Existing Coniferous Tree And Size



PLANT LIST					
CODE	BOTANICAL NAME	COMMON NAME	SIZE	QUANTITY	NOTES
TREES					
T-1	Quercus rubra	Red Oak	2" cal. or #7 Root Trapper (Or Approved Equal)	53	EA
T-2	Quercus macrocarpa	Bur Oak	2" cal. or #7 Root Trapper (Or Approved Equal)	5	EA
SHRUBS					
S-1	Taxus baccata densi-formis	English Yew	5 gal.	300	EA
Sod Lawn, See Notes and Specs					

- GENERAL NOTES**
- CONTRACTOR to verify location of all proposed and existing vaults, electrical duct banks, manholes, conduit and piping, drainage structures and other utilities prior to commencing work.
 - CONTRACTOR shall not willfully install any proposed landscape improvements when conflicts exist between landscape improvements and existing or proposed utilities or site features such as walks, roads, buildings or existing trees to remain.
 - Prior to construction field verify location of all buildings, walls, roads and curbs affecting landscape scope of work.
 - All work performed within the drip line of trees designated "existing trees to remain" shall be hand labor.
 - Reference to north refers to true north, reference to scale is for full-sized drawings only. Do not scale from reduced drawings.
 - Dimensions take precedence over scales shown on drawings.

- PLANTING NOTES**
- Install all trees a minimum of four (4) feet from back of curb, edge of wall or paving unless noted otherwise.
 - Install lawn under all trees throughout entire lawn planting area to limit of spray irrigation unless noted otherwise.
 - Plant names are abbreviated on the drawings. See plant list for key and classification.
 - Place a 3" layer of wood chip mulch on all plantings areas except lawn.
 - Location of all planting is diagrammatic. Do not willfully locate plantings where conflicts exist with utilities or the building.
 - RESODDING: The CONTRACTOR will resod all lawn areas disturbed during the course of construction. This item will not be paid for separately, but will be considered incidental to the planting of new vegetation.
 - Scarify all planting areas and completely break-up soil to a minimum depth of 12" prior to amending the soils.
 - Plant quantities are shown for the convenience to the CONTRACTOR. If there are discrepancies between the plan and notes, the plans shall govern.
- TREE PLANTING**
- Align trees across streets. Adjust spacing as necessary, subject to review by the ENGINEER.
 - Form 30 inch watering around all trees not installed in lawn or paved areas.
 - BARK MULCH: The CONTRACTOR shall place 3 cubic feet of bark mulch in a 3-foot diameter ring at the base of each tree that is planted. Any bark mulch placed in excess of the requirements shall be at the CONTRACTORS expense.



100% CONSTRUCTION DOCUMENTS - NOT FOR CONSTRUCTION

CONSULTANTS: 14710 West Dodge Road, Suite 100 402.496.2498 P Omaha, Nebraska 68154-2027 402.496.2730 F www.LRA-Inc.com		ARCHITECT/ENGINEERS: 21 Delta Engineers, LLC 3824 North 108th Street Omaha, Nebraska 68164 PH: (402) 496-4115 Fax: (402) 493-2744		Drawing Title LANDSCAPE PLAN - WEST	Project Title UPGRADE ROADWAY, PARKING PHASE I DESIGN	Project Number 636A6-11-301 Building Number	VACIHCS 3600 30th ST Des Moines, Iowa
Revisions		Date		Approved COTR	Location DES MOINES VA MEDICAL CENTER	Drawing Number CS118	Dept. 19 of 24
					Date MARCH 29, 2012	Checked SRL	Drawn PCH