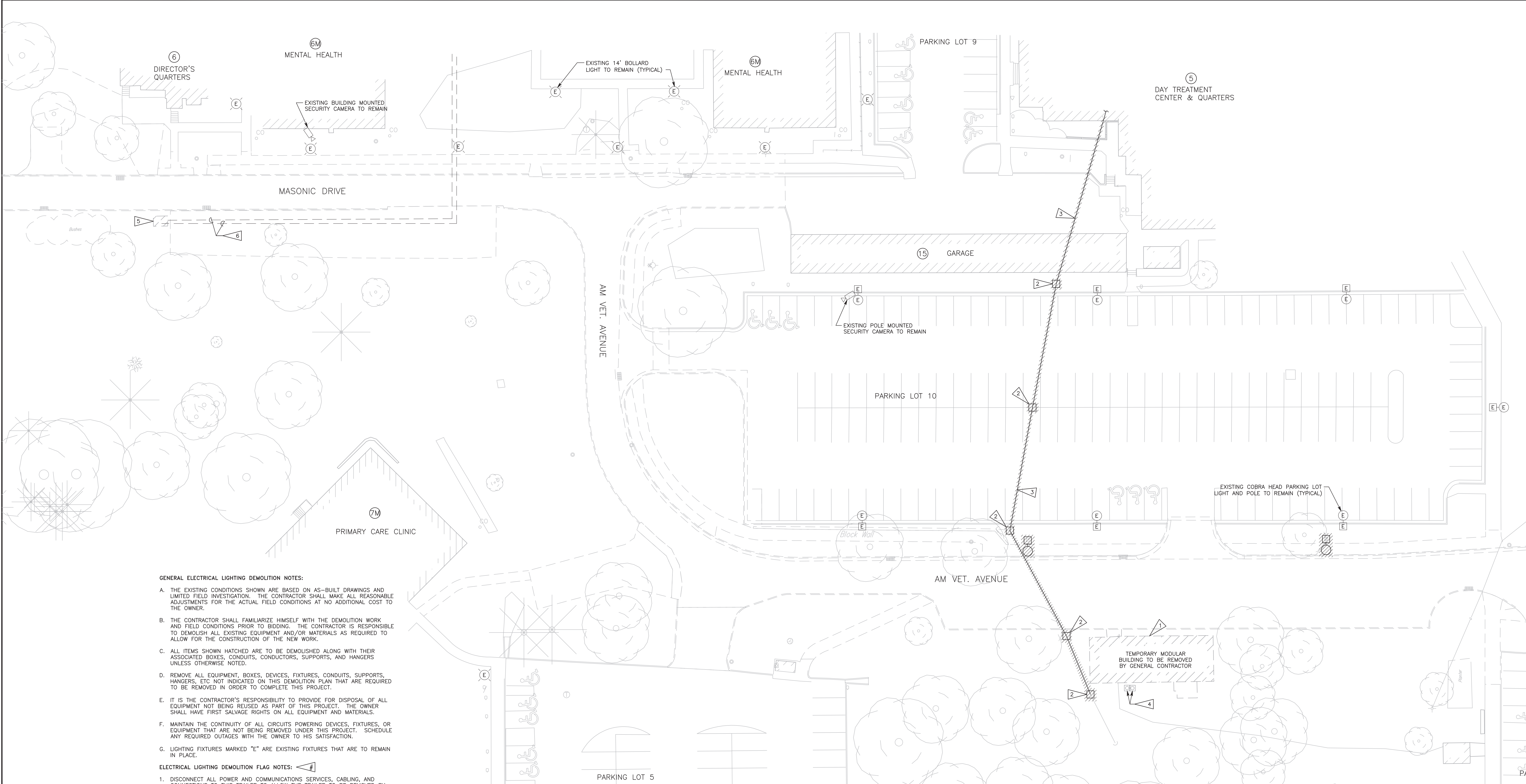




three inches = one foot  
one and one half inches = one foot  
one inch = one foot  
three quarters inch = one foot  
one half inch = one foot  
three eighths inch = one foot  
one quarter inch = one foot  
one eighth inch = one foot



- GENERAL ELECTRICAL LIGHTING DEMOLITION NOTES:**
- A. THE EXISTING CONDITIONS SHOWN ARE BASED ON AS-BUILT DRAWINGS AND LIMITED FIELD INVESTIGATION. THE CONTRACTOR SHALL MAKE ALL REASONABLE ADJUSTMENTS FOR THE ACTUAL FIELD CONDITIONS AT NO ADDITIONAL COST TO THE OWNER.
  - B. THE CONTRACTOR SHALL FAMILIARIZE HIMSELF WITH THE DEMOLITION WORK AND FIELD CONDITIONS PRIOR TO BIDDING. THE CONTRACTOR IS RESPONSIBLE TO DEMOLISH ALL EXISTING EQUIPMENT AND/OR MATERIALS AS REQUIRED TO ALLOW FOR THE CONSTRUCTION OF THE NEW WORK.
  - C. ALL ITEMS SHOWN HATCHED ARE TO BE DEMOLISHED ALONG WITH THEIR ASSOCIATED BOXES, CONDUITS, CONDUCTORS, SUPPORTS, AND HANGERS UNLESS OTHERWISE NOTED.
  - D. REMOVE ALL EQUIPMENT, BOXES, DEVICES, FIXTURES, CONDUITS, SUPPORTS, HANGERS, ETC NOT INDICATED ON THIS DEMOLITION PLAN THAT ARE REQUIRED TO BE REMOVED IN ORDER TO COMPLETE THIS PROJECT.
  - E. IT IS THE CONTRACTOR'S RESPONSIBILITY TO PROVIDE FOR DISPOSAL OF ALL EQUIPMENT NOT BEING REUSED AS PART OF THIS PROJECT. THE OWNER SHALL HAVE FIRST SALVAGE RIGHTS ON ALL EQUIPMENT AND MATERIALS.
  - F. MAINTAIN THE CONTINUITY OF ALL CIRCUITS POWERING DEVICES, FIXTURES, OR EQUIPMENT THAT ARE NOT BEING REMOVED UNDER THIS PROJECT. SCHEDULE ANY REQUIRED OUTAGES WITH THE OWNER TO HIS SATISFACTION.
  - G. LIGHTING FIXTURES MARKED "E" ARE EXISTING FIXTURES THAT ARE TO REMAIN IN PLACE.
- ELECTRICAL LIGHTING DEMOLITION FLAG NOTES:**
1. DISCONNECT ALL POWER AND COMMUNICATIONS SERVICES, CABLING, AND CONNECTIONS TO THIS TRAILER TO ALLOW THE TRAILER TO BE REMOVED BY THE GENERAL CONTRACTOR.
  2. DEMOLISH THIS EXISTING WOODEN POLE USED TO SUPPORT THE OVERHEAD POWER FEED TO THE TRAILER. PATCH CONCRETE, ASPHALT, OR SOD AS NEEDED.
  3. DEMOLISH THIS OVERHEAD POWER FEED TO THE TRAILER COMPLETE TO THE BREAKER OR DISCONNECT IN BUILDING 5.
  4. DISCONNECT POWER AND CONTROLS TO THESE A/C CONDENSING UNITS TO ALLOW THEM TO BE REMOVED WITH THE TRAILER BY THE GENERAL CONTRACTOR.
  5. DISCONNECT ALL POWER AND COMMUNICATIONS CONNECTIONS TO THIS INFORMATION BOOTH SO THAT IT CAN BE RELOCATED BY THE GENERAL CONTRACTOR.
  6. RECORD DRAWINGS INDICATE THAT THESE ARE THE EXISTING POWER AND COMMUNICATIONS CONDUIT ROUTES TO THE EXISTING INFORMATION BOOTH. INTERRUPT THESE CONDUITS AND RETAIN THEIR CONDUCTORS AND/OR CABLES SO THAT THEY MAY BE EXTENDED TO THE NEW INFORMATION BOOTH LOCATION.

**ELECTRICAL DEMOLITION PLAN**  
Scale: 1" = 20'-0"  
0 10' 20' 40'  
1" = 20'-0"

100% CONSTRUCTION DOCUMENTS - NOT FOR CONSTRUCTION

<b>CONSULTANTS:</b>  <b>LAMP RYNEARSON &amp; ASSOCIATES</b> 14710 West Dodge Road, Suite 100 Omaha, Nebraska 68154-2027 www.LRA-Inc.com 402.496.2498   P 402.496.2730   F		<b>ARCHITECT/ENGINEERS:</b>  <b>21 Delta Engineers</b> 21 Delta Engineers, LLC 3824 North 108th Street Omaha, Nebraska 68164 PH: (402) 496-4115 Fax: (402) 493-2744		<b>Drawing Title</b> <b>ELECTRICAL DEMOLITION PLAN</b>	<b>Project Title</b> UPGRADE ROADWAY, PARKING PHASE I DESIGN	<b>Project Number</b> 636A6-11-301 <b>Building Number</b>
<b>Revisions:</b> Date		<b>Approved COTR</b>		<b>Location</b> DES MOINES VA MEDICAL CENTER	<b>Date</b> MARCH 29, 2012	<b>Checked</b> PJM
				<b>Drawn</b> TLS	<b>Drawing Number</b> ED100	<b>Dwg</b> 22 of 23