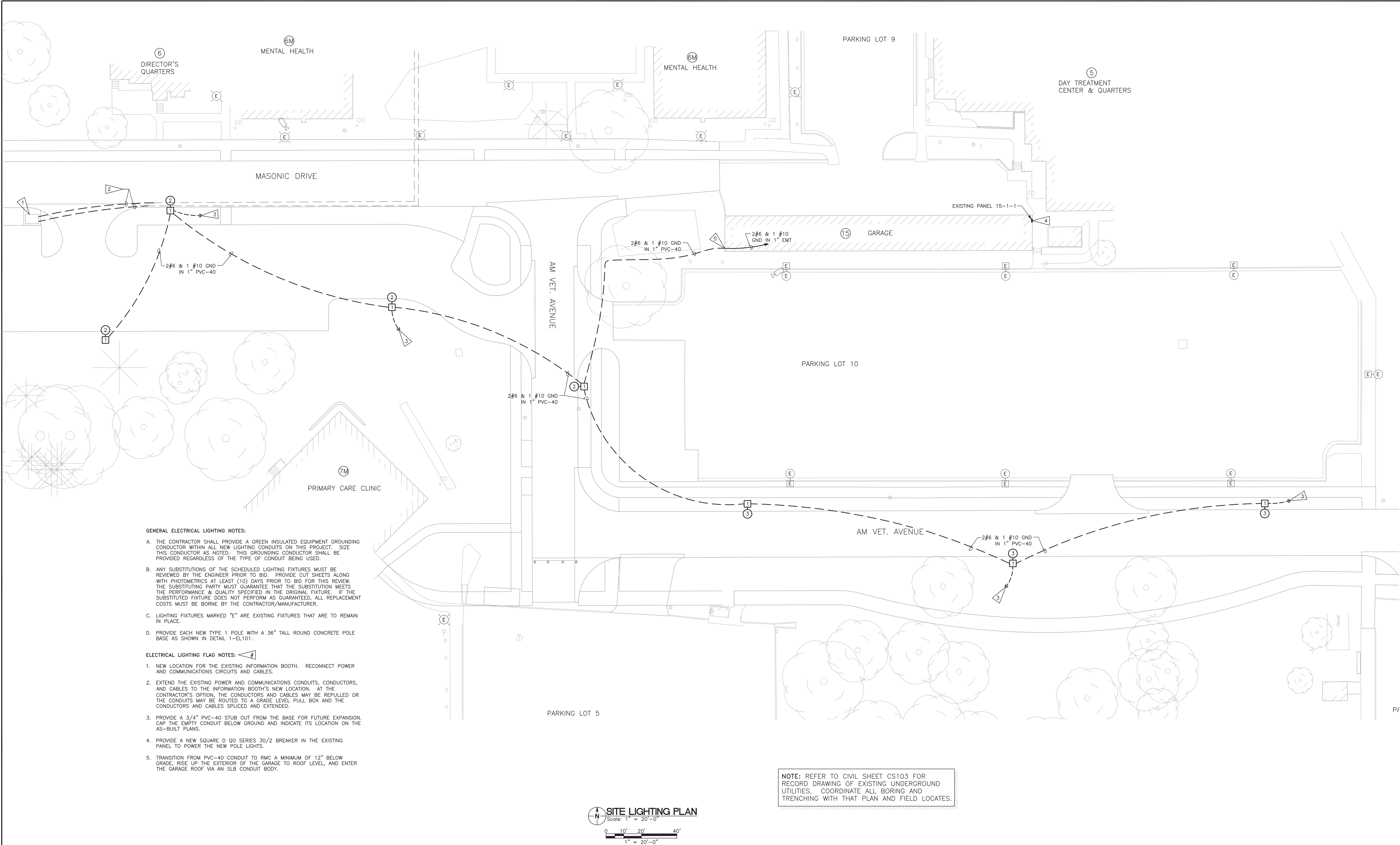





three inches = one foot
one and one half inches = one foot
one inch = one foot
three quarters inch = one foot
one half inch = one foot
three eighths inch = one foot
one quarter inch = one foot
one eighth inch = one foot



100% CONSTRUCTION DOCUMENTS - NOT FOR CONSTRUCTION

		CONSULTANTS:				ARCHITECT/ENGINEERS:		Drawing Title SITE LIGHTING PLAN		Project Title UPGRADE ROADWAY, PARKING PHASE I DESIGN		Project Number 636A6-11-301		<div>VACIHCS 3600 30th ST Des Moines, Iowa</div> <div> Department of Veterans Affairs</div>			
		 LAMP RYNEARSON & ASSOCIATES		14710 West Dodge Road, Suite 100 Omaha, Nebraska 68154-2027 www.LRA-Inc.com		 21 Delta Engineers		Approved: COTR		Location DES MOINES VA MEDICAL CENTER		Building Number					
						21 Delta Engineers, LLC 3824 North 108th Street Omaha, Nebraska 68164 PH: (402) 496-4115 Fax: (402) 493-2744				Drawing Number EL100							
										Date MARCH 29, 2012		Checked PJM				Drawn TLS	
Revisions:		Date										Dwg 23 of 24					