

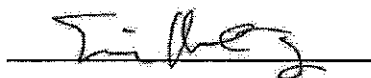
**Bulk Asbestos Fiber Analysis by Polarized Light Microscopy (PLM)**  
**EPA 600/M4-82-020; 600/R-93/116**

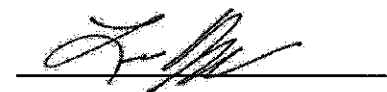
**Thomas Doxey**  
**EFI Global**  
**8100 Professional Place Suite 113**  
**Landover MD 20785**

**J3 Order #:** JH0930649  
**Date Received:** 03-Nov-2009  
**Date Analyzed:** 06-Nov-2009  
**Date Reported:** 09-Nov-2009

**VA MURFREESBORO - BLDG 18**

Sample ID #	Location	Sample Description	Asbestos (Yes/No)	Asbestos Constituents	Non-Asbestos Constituents
MF-2009-18-B-1A		LAYER 1 Floor Tile, Brown, Homogeneous	Yes	Chrysotile 3%	Other Non-Fibrous Material 97%
		LAYER 2 Mastic, Black, Homogeneous	Yes	Chrysotile 3%	Other Non-Fibrous Material 97%
MF-2009-18-B-1B		Flooring, Sample Not Analyzed			
MF-2009-18-B-1C		Flooring, Sample Not Analyzed			
MF-2009-18-B-2A		LAYER 1 Texture, Brown/ White, Homogeneous	No	None Detected	Other Non-Fibrous Material 100%
		LAYER 2 Plaster, White, Homogeneous	No	None Detected	Other Non-Fibrous Material 100%
MF-2009-18-1-2B		LAYER 1, Texture, Brown/ White, Homogeneous	No	None Detected	Other Non-Fibrous Material 100%
		LAYER 2 Plaster, White, Homogeneous	No	None Detected	Other Non-Fibrous Material 100%
MF-2009-18-2-2C		LAYER 1 Texture, Brown/ White, Homogeneous	No	None Detected	Other Non-Fibrous Material 100%
		LAYER 2 Plaster, White, Homogeneous	No	None Detected	Other Non-Fibrous Material 100%

  
Eric Montoya Analyst

  
Lee W. Poye Lab Director

This report relates only to the materials tested. This report is for the exclusive use of the addressed client and shall not be reproduced except in full, without written approval by J3 Resources, Inc. (J3). Samples are analyzed according to EPA test methods listed above and are subject to the inherent limitations of Polarized Light Microscopy and interference of matrix components. J3 recommends TEM confirmation of non-friable organically bound materials reported as < 1% by PLM. All samples received in good condition unless otherwise noted. This report shall not be used to claim product certification, approval, or endorsement by NVLAP, NIST, or any agency of the federal government.



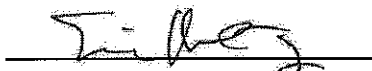
**Bulk Asbestos Fiber Analysis by Polarized Light Microscopy (PLM)**  
**EPA 600/M4-82-020; 600/R-93/116**

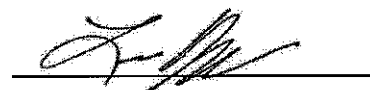
**Thomas Doxey**  
**EFI Global**  
**8100 Professional Place Suite 113**  
**Landover MD 20785**

**J3 Order #:** JH0930649  
**Date Received:** 03-Nov-2009  
**Date Analyzed:** 06-Nov-2009  
**Date Reported:** 09-Nov-2009

**VA MURFREESBORO - BLDG 18**

Sample ID #	Location	Sample Description	Asbestos (Yes/No)	Asbestos Constituents	Non-Asbestos Constituents
MF-2009-18-B-3A		Insulation, White, Homogeneous	Yes	Amosite 10%	Cellulose Fiber 10% Other Non-Fibrous Material 80%
MF-2009-18-B-3B		Insulation, Sample Not Analyzed			
MF-2009-18-B-3C		Insulation, Sample Not Analyzed			
MF-2009-18-B-4A		LAYER 1 Wrap, Tan, Homogeneous	No	None Detected	Cellulose Fiber 100%
		LAYER 2 Insulation, Gray/ White, Homogeneous	Yes	Chrysotile 15%	Cellulose Fiber 20% Other Non-Fibrous Material 65%
		LAYER 3 Insulation, Brown, Homogeneous	No	None Detected	Cellulose Fiber 75% Other Non-Fibrous Material 25%
MF-2009-18-B-4B		LAYER 1 Wrap, Tan, Homogeneous	No	None Detected	Cellulose Fiber 100%
		LAYER 2 Insulation, Brown, Homogeneous	No	None Detected	Cellulose Fiber 75% Other Non-Fibrous Material 25%

  
Eric Montoya Analyst

  
Lee W. Poye Lab Director

This report relates only to the materials tested. This report is for the exclusive use of the addressed client and shall not be reproduced except in full, without written approval by J3 Resources, Inc. (J3). Samples are analyzed according to EPA test methods listed above and are subject to the inherent limitations of Polarized Light Microscopy and interference of matrix components. J3 recommends TEM confirmation of non-friable organically bound materials reported as < 1% by PLM. All samples received in good condition unless otherwise noted. This report shall not be used to claim product certification, approval, or endorsement by NVLAP, NIST, or any agency of the federal government.



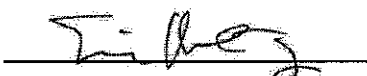
**Bulk Asbestos Fiber Analysis by Polarized Light Microscopy (PLM)**  
**EPA 600/M4-82-020; 600/R-93/116**

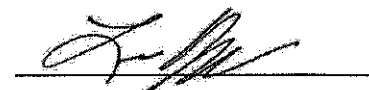
**Thomas Doxey**  
**EFI Global**  
**8100 Professional Place Suite 113**  
**Landover MD 20785**

**J3 Order #:** JH0930649  
**Date Received:** 03-Nov-2009  
**Date Analyzed:** 06-Nov-2009  
**Date Reported:** 09-Nov-2009

**VA MURFREESBORO - BLDG 18**

Sample ID #	Location	Sample Description	Asbestos (Yes/No)	Asbestos Constituents	Non-Asbestos Constituents	
MF-2009-18-B-4C		LAYER 1 Wrap, Tan, Homogeneous	No	None Detected	Cellulose Fiber	100%
		LAYER 2 Insulation, Gray/ White, Homogeneous	Yes	Chrysotile 15%	Cellulose Fiber Other Non-Fibrous Material	20% 65%
		LAYER 3 Insulation, Brown, Homogeneous	No	None Detected	Cellulose Fiber Other Non-Fibrous Material	75% 25%
MF-2009-18-B-5A		Mastic, White, Homogeneous	No	None Detected	Other Non-Fibrous Material	100%
MF-2009-18-B-5B		Mastic, White, Homogeneous	No	None Detected	Other Non-Fibrous Material	100%
MF-2009-18-B-5C		Mastic, White, Homogeneous	No	None Detected	Other Non-Fibrous Material	100%
MF-2009-18-B-6A		Lab Sink, Black, Homogeneous	No	None Detected	Other Non-Fibrous Material	100%

  
Eric Montoya      Analyst

  
Lee W. Poye      Lab Director

This report relates only to the materials tested. This report is for the exclusive use of the addressed client and shall not be reproduced except in full, without written approval by J3 Resources, Inc. (J3). Samples are analyzed according to EPA test methods listed above and are subject to the inherent limitations of Polarized Light Microscopy and interference of matrix components. J3 recommends TEM confirmation of non-friable organically bound materials reported as < 1% by PLM. All samples received in good condition unless otherwise noted. This report shall not be used to claim product certification, approval, or endorsement by NVLAP, NIST, or any agency of the federal government.

**Bulk Asbestos Fiber Analysis by Polarized Light Microscopy (PLM)**

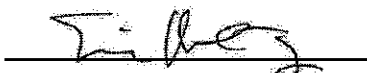
**EPA 600/M4-82-020; 600/R-93/116**

**Thomas Doxey**  
**EFI Global**  
**8100 Professional Place Suite 113**  
**Landover MD 20785**

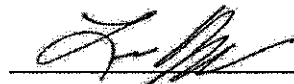
**J3 Order #:** JH0930649  
**Date Received:** 03-Nov-2009  
**Date Analyzed:** 06-Nov-2009  
**Date Reported:** 09-Nov-2009

**VA MURFREESBORO - BLDG 18**

Sample ID #	Location	Sample Description	Asbestos (Yes/No)	Asbestos Constituents	Non-Asbestos Constituents
MF-2009-18-1-7A		LAYER 1 Flooring, White, Homogeneous	No	None Detected	Other Non-Fibrous Material 100%
		LAYER 2 Mastic, Beige, Homogeneous	No	None Detected	Other Non-Fibrous Material 100%
		LAYER 3 Flooring, Beige/ Gray, Homogeneous	No	None Detected	Cellulose Fiber 20% Fibrous Glass 5% Other Non-Fibrous Material 75%
MF-2009-18-1-8A		Not submitted	No		
MF-2009-18-1-8B		Flooring, White, Homogeneous	No	None Detected	Other Non-Fibrous Material 100%
MF-2009-18-1-8C		Flooring, White, Homogeneous	No	None Detected	Other Non-Fibrous Material 100%
MF-2009-18-1-9A		Sink Undercoat, Black, Homogeneous	No	None Detected	Other Non-Fibrous Material 100%
MF-2009-18-1-10A		Ceiling Texture, White, Homogeneous	No	None Detected	Other Non-Fibrous Material 100%
MF-2009-18-1-10B		Ceiling Texture, White, Homogeneous	No	None Detected	Other Non-Fibrous Material 100%

  
Eric Montoya

Analyst

  
Lee W. Poye

Lab Director

This report relates only to the materials tested. This report is for the exclusive use of the addressed client and shall not be reproduced except in full, without written approval by J3 Resources, Inc. (J3). Samples are analyzed according to EPA test methods listed above and are subject to the inherent limitations of Polarized Light Microscopy and interference of matrix components. J3 recommends TEM confirmation of non-friable organically bound materials reported as < 1% by PLM. All samples received in good condition unless otherwise noted. This report shall not be used to claim product certification, approval, or endorsement by NVLAP, NIST, or any agency of the federal government.

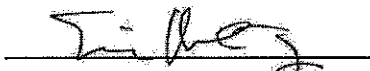
**Bulk Asbestos Fiber Analysis by Polarized Light Microscopy (PLM)**  
**EPA 600/M4-82-020; 600/R-93/116**

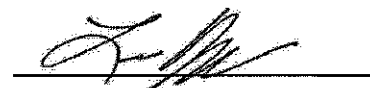
Thomas Doxey  
EFI Global  
8100 Professional Place Suite 113  
Landover MD 20785

J3 Order #: JH0930649  
Date Received: 03-Nov-2009  
Date Analyzed: 06-Nov-2009  
Date Reported: 09-Nov-2009

**VA MURFREESBORO - BLDG 18**

Sample ID #	Location	Sample Description	Asbestos (Yes/No)	Asbestos Constituents	Non-Asbestos Constituents
MF-2009-18-1-10C		Ceiling Texture, White, Homogeneous	No	None Detected	Other Non-Fibrous Material 100%
MF-2009-18-2-10D		Ceiling Texture, White, Homogeneous	No	None Detected	Other Non-Fibrous Material 100%
MF-2009-18-2-10E		Ceiling Texture, White, Homogeneous	No	None Detected	Other Non-Fibrous Material 100%
MF-2009-18-1-11A		Mastic, Yellow, Homogeneous	No	None Detected	Other Non-Fibrous Material 100%
MF-2009-18-1-11B		Mastic, Yellow, Homogeneous	No	None Detected	Other Non-Fibrous Material 100%
MF-2009-18-1-11C		Mastic, Yellow, Homogeneous	No	None Detected	Other Non-Fibrous Material 100%
MF-2009-18-1-12A		LAYER 1 Texture, White, Homogeneous	No	None Detected	Other Non-Fibrous Material 100%
		LAYER 2 Wallboard, Brown/ White, Homogeneous	No	None Detected	Cellulose Fiber 10% Fibrous Glass <1% Other Non-Fibrous Material 90%

  
Eric Montoya Analyst

  
Lee W. Poye Lab Director

This report relates only to the materials tested. This report is for the exclusive use of the addressed client and shall not be reproduced except in full, without written approval by J3 Resources, Inc. (J3). Samples are analyzed according to EPA test methods listed above and are subject to the inherent limitations of Polarized Light Microscopy and interference of matrix components. J3 recommends TEM confirmation of non-friable organically bound materials reported as < 1% by PLM. All samples received in good condition unless otherwise noted. This report shall not be used to claim product certification, approval, or endorsement by NVLAP, NIST, or any agency of the federal government.



**Bulk Asbestos Fiber Analysis by Polarized Light Microscopy (PLM)**

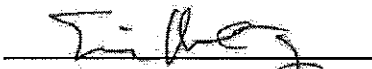
**EPA 600/M4-82-020; 600/R-93/116**

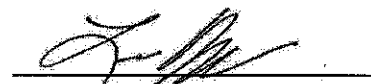
**Thomas Doxey**  
**EFI Global**  
**8100 Professional Place Suite 113**  
**Landover MD 20785**

**J3 Order #:** JH0930649  
**Date Received:** 03-Nov-2009  
**Date Analyzed:** 06-Nov-2009  
**Date Reported:** 09-Nov-2009

**VA MURFREESBORO - BLDG 18**

Sample ID #	Location	Sample Description	Asbestos (Yes/No)	Asbestos Constituents	Non-Asbestos Constituents
MF-2009-18-1-12B		LAYER 1 Texture, White, Homogeneous	No	None Detected	Other Non-Fibrous Material 100%
		LAYER 2 Wallboard, Brown/ White, Homogeneous	No	None Detected	Cellulose Fiber 10% Fibrous Glass <1% Other Non-Fibrous Material 90%
MF-2009-18-2-12C		LAYER 1 Texture, White, Homogeneous	No	None Detected	Other Non-Fibrous Material 100%
		LAYER 2 Wallboard, Brown/ White, Homogeneous	No	None Detected	Cellulose Fiber 10% Fibrous Glass <1% Other Non-Fibrous Material 90%
MF-2009-18-A-13A		Mastic, White, Homogeneous	No	None Detected	Other Non-Fibrous Material 100%
MF-2009-18-A-13B		Mastic, White, Homogeneous	No	None Detected	Other Non-Fibrous Material 100%
MF-2009-18-A-13C		Mastic, White, Homogeneous	No	None Detected	Other Non-Fibrous Material 100%

  
Eric Montoya Analyst

  
Lee W. Poye Lab Director

This report relates only to the materials tested. This report is for the exclusive use of the addressed client and shall not be reproduced except in full, without written approval by J3 Resources, Inc. (J3). Samples are analyzed according to EPA test methods listed above and are subject to the inherent limitations of Polarized Light Microscopy and interference of matrix components. J3 recommends TEM confirmation of non-friable organically bound materials reported as < 1% by PLM. All samples received in good condition unless otherwise noted. This report shall not be used to claim product certification, approval, or endorsement by NVLAP, NIST, or any agency of the federal government.



EFI Global, Inc.  
8100 Professional Place  
Landover, MD 20705  
240-764-1792 fax

Date: 10-26-09 Project Manager: T. Doxey Project No.: 94515-00807 Laboratory Name: J3 Resources Turn around Time: 3 Day TAT  
Building No.: 13  
Inspector: D. Alexander/J. Kinder

### BULK SAMPLING SURVEY FORM

JH930649

Sample No.	Type of Material	Friable (Y/N)	Accessibility (Y/N)	Damage (H/M/L)	Potential for Human Exposure (H/M/L)	Vibration (H/M/L)	Condition	Priority Ranking (1 - 5)	Material Category	Sample Location (Unique Material Identifiers)	Quantity (LF or SF)	AHERA Classification
MF-2009-18-B-1-A	Basement	N	Y	L	M	L	G	4	M	1x9 BACKLASH FT w/BLACK MASTIC	350#	5
MF-2009-18-B-1-B										QA/QC MF-2009-18-B-1-B(a)		
MF-2009-18-B-1-C												
MF-2009-18-B-2-A									M	PUSTER WRM/CEILING BASEMENT	2000#	
MF-2009-18-1-2-B										KITCHEN-FL1		
MF-2009-18-2-2-C										Rm 203		
MF-2009-18-B-3-A		Y			L				TSI	DOMESTIC H <sub>2</sub> O FITTING (CHINA) (COLD/HOT)	50EA	
MF-2009-18-B-3-B												
MF-2009-18-B-3-C								X				
MF-												

AHERA Classifications: 1 - damaged or significantly damaged thermal system insulation ACM; 2 - damaged friable surfacing ACM; 3 - significantly damaged friable surfacing ACM; 4 - damaged or significantly damaged friable miscellaneous ACM; 5 - ACM with potential for damage; 6 - ACM with potential for significant damage; 7 - any remaining friable ACM or friable suspected ACM

Collected by: D. Alexander/J. Kinder Date: Time: Opened by: Date: Time: No. of Samples Received / Condition:  
Relinquished by: Date: Time: Analyzed by: Date: Time:  
Delivered by: Date: Time: Reported by: Date: Time:  
Received by: Date: Time: 10/3/2009



EFI Global, Inc.  
8100 Professional Place  
Landover, MD 20705  
240-764-1792 fax

Date: 10-26-09 Project Manager: T. Doxey  
Building No.: 13 Inspector: D. Alexander/J. Kinder

Project No.: 94515-00807 Laboratory Name: J3 Resources Turn around Time: 3 Day TAT

### BULK SAMPLING SURVEY FORM

Sample No.	Type of Material	Friable (Y/N)	Accessibility (Y/N)	Damage (H/M/L)	Potential Exposure for Human (H/M/L)	Vibration (H/M/L)	Condition	Priority Ranking (1 - 5) (Best - Worst)	Material Category	Sample Location (Unique Material Identifiers)	Quantity (LF or SF)	AHERA* Classification
MF- 2009 - 13-B-4-A	BASIN	N	Y	L	L	L	GT	4	TS1	DOMESTIC H2O COOLING STRAIGHT RUN (CARBONATED)	300 LF	5
MF- 2009 - 13-B-4-B												
MF- 2009 - 13-B-4-C												
MF- 2009 - 13-B-5-A										HEATING HOT H2O FITTING (WASTELINE FGR)	15 LF	
MF- 2009 - 13-B-5-B												
MF- 2009 - 13-B-5-C												
MF- 2009 - 13-B-6-A										ACID-RESISTANT SINK (LAB TYPE SINK)	1 LF	5
MF- 2009 - 13-1-7-A	ENTRY & KITCHEN	N	Y	L	L	L	GT	4	M	ROLLED FLOOR COVERING (2 LAYER)	360	5
MF- - - - -												
MF- - - - -												

AHERA Classifications: 1 - damaged or significantly damaged thermal system insulation ACM; 2 - damaged friable surfacing ACM; 3 - significantly damaged friable surfacing ACM; 4 - damaged or significantly damaged friable miscellaneous ACM; 5 - ACM with potential for damage; 6 - ACM with potential for significant damage; 7 - any remaining friable ACM or friable suspected ACM

Collected by: D. Alexander/J. Kinder Date: Time: No. of Samples Received / Condition: Opened by: Date: Time:  
Relinquished by: Date: Time: Analyzed by: Date: Time:  
Delivered by: Date: Time: Reported by: Date: Time:  
Received by: Date: Time:





EFI Global, Inc.  
8100 Professional Place  
Landover, MD 20705  
240-764-1792 fax

Date: 10-26-09  
Building No.: 18  
Inspector: D. Alexander/J. Kinder

Project Manager: T. Doxey  
Project No.: 94515-00807

Laboratory Name: J3 Resources Turn around Time: 3 Day TAT

### BULK SAMPLING SURVEY FORM

Sample No.	Type of Material	Friable (Y/N)	Accessibility (Y/N)	Damage (H/M/L)	Potential for Human Exposure (H/M/L)	Vibration (H/M/L)	Condition	Priority Ranking (1 - 5)	Material Category	Sample Location (Unique Material Identifiers)	Quantity (LF or SF)	AHERA Classification
MF-2009-18-1-8-A	KITCHEN	Y	Y	L	H	L	G	4	M	ROLLED FLOOR COATING	117A	S
MF-2009-18-1-8-B										BEIGE DIAMOND PATTERN		
MF-2009-18-1-8-C												
MF-2009-18-1-9-A		Y	N	L	L	L	G	4	M	BLACK SINK UNDER COATING	16A	S
MF-2009-18-1-10-A RM 100		Y	N	M	L	L	G	4	S	SPRAY APPLIED CEILING TEXTURE		S
MF-2009-18-1-10-B RM 102												
MF-2009-18-1-10-C RM 106												
MF-2009-18-2-10-D STAIRS												
MF-2009-18-2-10-E RM 203												
MF-												

AHERA Classifications: 1 - damaged or significantly damaged thermal system insulation ACM; 2 - damaged friable surfacing ACM; 3 - significantly damaged friable surfacing ACM; 4 - damaged or significantly damaged friable miscellaneous ACM; 5 - ACM with potential for damage; 6 - ACM with potential for significant damage; 7 - any remaining friable ACM or friable suspected ACM

Collected by: D. Alexander/J. Kinder Date: Time: Opened by: Date: Time:  
Relinquished by: Date: Time: No. of Samples Received / Condition:  
Delivered by: Date: Time: Analyzed by: Date: Time:  
Received by: Date: Time: Reported by: Date: Time:



EFI Global, LLC  
8100 Professional Place  
Landover, MD 20705  
240-764-1792 fax

Date: 10-26-09 Project Manager: T. Doxey Project No.: 94515-00807 Laboratory Name: J3 Resources Turn around Time: 3 Day TAT  
Building No.: 18  
Inspector: D. Alexander/J. Kinder

### BULK SAMPLING SURVEY FORM

Sample No.	Type of Material	Friable (Y/N)	Accessibility (Y/N)	Damage (H/M/L)	Potential Exposure for Human (H/M/L)	Vibration (H/M/L)	Condition	Priority Ranking (1 - Worst) - 5 (Best)	Material Category	Sample Location (Unique Material Identifiers)	Quantity (LF or SF)	AHERA* Classification
MF-2009-18-1-11-A	RM106	N	Y	Y	Y	Y	G	4	M	YELLOW EMERALD MORTAR		S
MF-2009-18-1-11-B	RM105	Y	Y	Y	Y	Y	Y	Y	Y			Y
MF-2009-18-1-11-C	RM107	Y	Y	Y	Y	Y	Y	Y	Y			Y
MF-												
MF-2009-18-1-12-A	RM102	N	Y	Y	Y	Y	G	4	M	WTP WALL BOND- BEHIND WALL PANELS	850 <sup>lb</sup>	S
MF-2009-18-1-12-B	RM102	Y	Y	Y	Y	Y	Y	Y	Y			Y
MF-2009-18-2-12-C	RM201	Y	Y	Y	Y	Y	Y	Y	Y	HANING H2O PIPE. THIS MASTIC ON FCG	50 <sup>lb</sup>	S
MF-2009-18-A-13-A	RTV	Y	Y	Y	Y	Y	Y	Y	Y			Y
MF-2009-18-A-13-B		Y	Y	Y	Y	Y	Y	Y	Y			Y
MF-2009-18-A-13-C	Y	Y	Y	Y	Y	Y	Y	Y	Y			Y

AHERA Classifications: 1 - damaged or significantly damaged thermal system insulation ACM; 2 - damaged friable surfacing ACM; 3 - significantly damaged friable surfacing ACM; 4 - damaged or significantly damaged friable miscellaneous ACM; 5 - ACM with potential for damage; 6 - ACM with potential for significant damage; 7 - any remaining friable ACM or friable suspected ACM

Collected by: D. Alexander/J. Kinder Date: 10-26-09 Time: 10:30  
Relinquished by: \_\_\_\_\_ Date: \_\_\_\_\_ Time: \_\_\_\_\_  
Delivered by: \_\_\_\_\_ Date: \_\_\_\_\_ Time: \_\_\_\_\_  
Received by: \_\_\_\_\_ Date: 10-26-09 Time: 10:30

**Bulk Asbestos Fiber Analysis by Polarized Light Microscopy (PLM)**

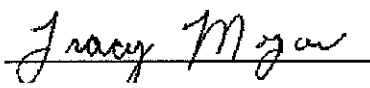
**EPA 600/M4-82-020; 600/R-93/116**

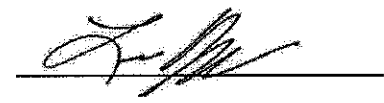
**Thomas Doxey**  
**EFI Global**  
**8100 Professional Place Suite 113**  
**Landover MD 20785**

**J3 Order #:** JH0930650  
**Date Received:** 03-Nov-2009  
**Date Analyzed:** 09-Nov-2009  
**Date Reported:** 09-Nov-2009

**VA MURFREESBORO - BLDG 19**

Sample ID #	Location	Sample Description	Asbestos (Yes/No)	Asbestos Constituents	Non-Asbestos Constituents
MF-2009-19-B-1A		Insulation, White, Homogeneous	Yes	Chrysotile 45%	Other Non-Fibrous Material 55%
MF-2009-19-B-1B		Insulation, Sample Not Analyzed			
MF-2009-19-B-1C		Insulation, Sample Not Analyzed			
MF-2009-19-B-2A		Insulation, Brown/ White, Homogeneous	Yes	Chrysotile 10%	Cellulose Fiber 90%
MF-2009-19-B-2B		Insulation, Sample Not Analyzed			
MF-2009-19-B-2C		Insulation, Sample Not Analyzed			
MF-2009-19-B-3A		Acid Resistant Sink, Green, Homogeneous	No	None Detected	Other Non-Fibrous Material 100%
MF-2009-19-B-4A		Duct Mastic, White, Homogeneous	No	None Detected	Cellulose Fiber 75% Other Non-Fibrous Material 25%
MF-2009-19-B-4B		Duct Mastic, White, Homogeneous	No	None Detected	Cellulose Fiber 75% Other Non-Fibrous Material 25%

  
Tracy Morgan Analyst

  
Lee W. Poye Lab Director

This report relates only to the materials tested. This report is for the exclusive use of the addressed client and shall not be reproduced except in full, without written approval by J3 Resources, Inc. (J3). Samples are analyzed according to EPA test methods listed above and are subject to the inherent limitations of Polarized Light Microscopy and interference of matrix components. J3 recommends TEM confirmation of non-friable organically bound materials reported as < 1% by PLM. All samples received in good condition unless otherwise noted. This report shall not be used to claim product certification, approval, or endorsement by NVLAP, NIST, or any agency of the federal government.



**Bulk Asbestos Fiber Analysis by Polarized Light Microscopy (PLM)**

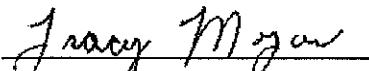
**EPA 600/M4-82-020; 600/R-93/116**

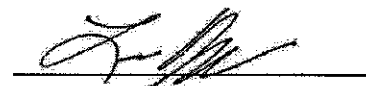
**Thomas Doxey**  
**EFI Global**  
**8100 Professional Place Suite 113**  
**Landover MD 20785**

**J3 Order #:** JH0930650  
**Date Received:** 03-Nov-2009  
**Date Analyzed:** 09-Nov-2009  
**Date Reported:** 09-Nov-2009

**VA MURFREESBORO - BLDG 19**

Sample ID #	Location	Sample Description	Asbestos (Yes/No)	Asbestos Constituents	Non-Asbestos Constituents
MF-2009-19-A-4C		Duct Mastic, White, Homogeneous	No	None Detected	Cellulose Fiber 75% Other Non-Fibrous Material 25%
MF-2009-19-1-5A		LAYER 1 Floor Tile, Tan, Homogeneous	Yes	Chrysotile 2%	Other Non-Fibrous Material 98%
		LAYER 2 Mastic, Black, Homogeneous	Yes	Chrysotile 3%	Other Non-Fibrous Material 97%
MF-2009-19-1-6A		LAYER 1 Floor Tile, Beige, Homogeneous	Yes	Chrysotile 2%	Other Non-Fibrous Material 98%
		LAYER 2 Mastic, Black, Homogeneous	Yes	Chrysotile 3%	Other Non-Fibrous Material 97%
		LAYER 3 Floor Tile, Beige, Homogeneous	No	None Detected	Other Non-Fibrous Material 100%
MF-2009-19-1-6B		LAYER 1 Floor Tile, Sample Not Analyzed			
		LAYER 2 Mastic, Sample Not Analyzed			
		LAYER 3 Floor Tile, Beige, Homogeneous	No	None Detected	Other Non-Fibrous Material 100%

  
Tracy Morgan Analyst

  
Lee W. Poye Lab Director

This report relates only to the materials tested. This report is for the exclusive use of the addressed client and shall not be reproduced except in full, without written approval by J3 Resources, Inc. (J3). Samples are analyzed according to EPA test methods listed above and are subject to the inherent limitations of Polarized Light Microscopy and interference of matrix components. J3 recommends TEM confirmation of non-friable organically bound materials reported as < 1% by PLM. All samples received in good condition unless otherwise noted. This report shall not be used to claim product certification, approval, or endorsement by NVLAP, NIST, or any agency of the federal government.

## **Bulk Asbestos Fiber Analysis by Polarized Light Microscopy (PLM)**

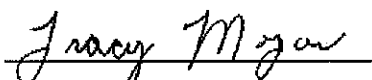
### **EPA 600/M4-82-020; 600/R-93/116**

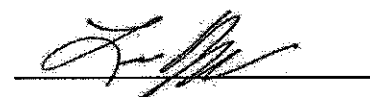
**Thomas Doxey**  
**EFI Global**  
**8100 Professional Place Suite 113**  
**Landover MD 20785**

**J3 Order #:** JH0930650  
**Date Received:** 03-Nov-2009  
**Date Analyzed:** 09-Nov-2009  
**Date Reported:** 09-Nov-2009

### **VA MURFREESBORO - BLDG 19**

Sample ID #	Location	Sample Description	Asbestos (Yes/No)	Asbestos Constituents	Non-Asbestos Constituents
MF-2009-19-1-6C		LAYER 1 Floor Tile, Sample Not Analyzed	No	None Detected	Other Non-Fibrous Material 100%
		LAYER 2 Mastic, Sample Not Analyzed			
		LAYER 3 Floor Tile, Beige, Homogeneous			
MF-2009-19-1-7A		LAYER 1 Plaster, White, Homogeneous	No	None Detected	Other Non-Fibrous Material 100%
		LAYER 2 Plaster, Beige, Homogeneous	No	None Detected	Other Non-Fibrous Material 100%
MF-2009-19-2-7B		LAYER 1 Plaster, White, Homogeneous	No	None Detected	Other Non-Fibrous Material 100%
		LAYER 2 Plaster, Beige, Homogeneous	No	None Detected	Other Non-Fibrous Material 100%
MF-2009-19-2-7C		LAYER 1 Plaster, White, Homogeneous	No	None Detected	Other Non-Fibrous Material 100%
		LAYER 2 Plaster, Beige, Homogeneous	No	None Detected	Other Non-Fibrous Material 100%

  
Tracy Morgan Analyst

  
Lee W. Poye Lab Director

This report relates only to the materials tested. This report is for the exclusive use of the addressed client and shall not be reproduced except in full, without written approval by J3 Resources, Inc. (J3). Samples are analyzed according to EPA test methods listed above and are subject to the inherent limitations of Polarized Light Microscopy and interference of matrix components. J3 recommends TEM confirmation of non-friable organically bound materials reported as < 1% by PLM. All samples received in good condition unless otherwise noted. This report shall not be used to claim product certification, approval, or endorsement by NVLAP, NIST, or any agency of the federal government.

**Bulk Asbestos Fiber Analysis by Polarized Light Microscopy (PLM)**

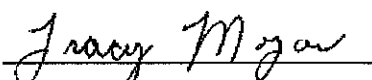
**EPA 600/M4-82-020; 600/R-93/116**

**Thomas Doxey**  
**EFI Global**  
**8100 Professional Place Suite 113**  
**Landover MD 20785**

**J3 Order #:** JH0930650  
**Date Received:** 03-Nov-2009  
**Date Analyzed:** 09-Nov-2009  
**Date Reported:** 09-Nov-2009

**VA MURFREESBORO - BLDG 19**

Sample ID #	Location	Sample Description	Asbestos (Yes/No)	Asbestos Constituents	Non-Asbestos Constituents
MF-2009-19-1-8A		LAYER 1 Joint Compound, White, Homogeneous	No	None Detected	Fibrous Glass <1% Other Non-Fibrous Material 100%
		LAYER 2 Insulation, Tan, Homogeneous	No	None Detected	Cellulose Fiber 85% Other Non-Fibrous Material 15%
MF-2009-19-1-8B		LAYER 1 Joint Compound, White, Homogeneous	No	None Detected	Fibrous Glass <1% Other Non-Fibrous Material 100%
		LAYER 2 Wallboard, Brown/ White, Homogeneous	No	None Detected	Cellulose Fiber 10% Other Non-Fibrous Material 90%
MF-2009-19-1-8C		Not submitted	No		
MF-2009-19-1-9A		Mastic, Yellow, Homogeneous	No	None Detected	Other Non-Fibrous Material 100%
MF-2009-19-1-9B		Mastic, Yellow, Homogeneous	No	None Detected	Other Non-Fibrous Material 100%
MF-2009-19-1-9C		Mastic, Yellow, Homogeneous	No	None Detected	Other Non-Fibrous Material 100%

  
Tracy Morgan Analyst

  
Lee W. Poye Lab Director

This report relates only to the materials tested. This report is for the exclusive use of the addressed client and shall not be reproduced except in full, without written approval by J3 Resources, Inc. (J3). Samples are analyzed according to EPA test methods listed above and are subject to the inherent limitations of Polarized Light Microscopy and interference of matrix components. J3 recommends TEM confirmation of non-friable organically bound materials reported as < 1% by PLM. All samples received in good condition unless otherwise noted. This report shall not be used to claim product certification, approval, or endorsement by NVLAP, NIST, or any agency of the federal government.



**Bulk Asbestos Fiber Analysis by Polarized Light Microscopy (PLM)**

**EPA 600/M4-82-020; 600/R-93/116**

**Thomas Doxey**  
**EFI Global**  
**8100 Professional Place Suite 113**  
**Landover MD 20785**

**J3 Order #:** JH0930650  
**Date Received:** 03-Nov-2009  
**Date Analyzed:** 09-Nov-2009  
**Date Reported:** 09-Nov-2009

**VA MURFREESBORO - BLDG 19**

Sample ID #	Location	Sample Description	Asbestos (Yes/No)	Asbestos Constituents	Non-Asbestos Constituents
MF-2009-19-1-10A		LAYER 1 Floor Tile, Tan, Homogeneous	Yes	Chrysotile 2%	Other Non-Fibrous Material 98%
		LAYER 2 Mastic, Black, Homogeneous	Yes	Chrysotile 3%	Other Non-Fibrous Material 97%
MF-2009-19-1-10B		Flooring, Sample Not Analyzed			
MF-2009-19-1-10C		Flooring, Sample Not Analyzed			
MF-2009-19-1-11A		LAYER 1 Linoleum, Beige, Homogeneous	Yes	Chrysotile 20%	Cellulose Fiber 5% Other Non-Fibrous Material 75%
		LAYER 2 Mastic, Brown, Homogeneous	No	None Detected	Other Non-Fibrous Material 100%
		LAYER 3 Linoleum, Tan/ Brown, Homogeneous	No	None Detected	Cellulose Fiber 45% Other Non-Fibrous Material 55%
MF-2009-19-1-11B		LAYER 1 Linoleum, Sample Not Analyzed			
		LAYER 2 Mastic, Brown, Homogeneous	No	None Detected	Other Non-Fibrous Material 100%
		LAYER 3 Linoleum, Tan/ Brown, Homogeneous	No	None Detected	Cellulose Fiber 45% Other Non-Fibrous Material 55%

Tracy Morgan Analyst

Lee W. Poye Lab Director

This report relates only to the materials tested. This report is for the exclusive use of the addressed client and shall not be reproduced except in full, without written approval by J3 Resources, Inc. (J3). Samples are analyzed according to EPA test methods listed above and are subject to the inherent limitations of Polarized Light Microscopy and interference of matrix components. J3 recommends TEM confirmation of non-friable organically bound materials reported as < 1% by PLM. All samples received in good condition unless otherwise noted. This report shall not be used to claim product certification, approval, or endorsement by NVLAP, NIST, or any agency of the federal government.

**Bulk Asbestos Fiber Analysis by Polarized Light Microscopy (PLM)**

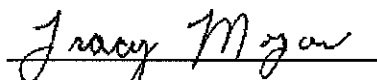
**EPA 600/M4-82-020; 600/R-93/116**

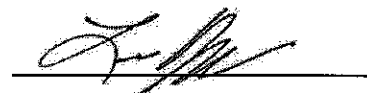
**Thomas Doxey**  
**EFI Global**  
**8100 Professional Place Suite 113**  
**Landover MD 20785**

**J3 Order #:** JH0930650  
**Date Received:** 03-Nov-2009  
**Date Analyzed:** 09-Nov-2009  
**Date Reported:** 09-Nov-2009

**VA MURFREESBORO - BLDG 19**

Sample ID #	Location	Sample Description	Asbestos (Yes/No)	Asbestos Constituents	Non-Asbestos Constituents
MF-2009-19-1-11C		LAYER 1 Linoleum, Sample Not Analyzed			
		LAYER 2 Mastic, Brown, Homogeneous	No	None Detected	Other Non-Fibrous Material 100%
		LAYER 3 Linoleum, Tan/ Brown, Homogeneous	No	None Detected	Cellulose Fiber 45% Other Non-Fibrous Material 55%

  
Tracy Morgan Analyst

  
Lee W. Poye Lab Director

This report relates only to the materials tested. This report is for the exclusive use of the addressed client and shall not be reproduced except in full, without written approval by J3 Resources, Inc. (J3). Samples are analyzed according to EPA test methods listed above and are subject to the inherent limitations of Polarized Light Microscopy and interference of matrix components. J3 recommends TEM confirmation of non-friable organically bound materials reported as < 1% by PLM. All samples received in good condition unless otherwise noted. This report shall not be used to claim product certification, approval, or endorsement by NVLAP, NIST, or any agency of the federal government.





**EFI Global**  
Complex Issues • Solid Solutions



40930650

EFI Global, Inc.  
8100 Professional Place  
Landover, MD 20705  
240-764-1792 fax

Date: 10-26 Project Manager: T. Doxey  
Building No.: 19  
Inspector: D. Alexander/J. Kinder

Project No.: 94515-00807 Laboratory Name: J3 Resources Turn around Time: 3 Day TAT

### BULK SAMPLING SURVEY FORM

Sample No.	Type of Material	Friable (Y/N)	Accessibility (Y/N)	Damage (H/M/L)	Potential for Human Exposure (H/M/L)	Vibration (H/M/L)	Condition	Priority Ranking (1 - 5) (Worst - Best)	Material Category	Sample Location (Unique Material Identifiers)	Quantity (LF or SF)	AHERA* Classification
MF-2009-19-B-1-A	Basement	Y	Y	L	L	L	G	4	Ts1	DOMESTIC COLD/HOT H2O FITTING	27EA	S
MF-2009-19-B-1-B	Basement									QA/QC MF-2009-19-B-1-B(2)	X	
MF-2009-19-B-1-C		Y								DOMESTIC COLD/HOT H2O STRAIGHT RUN	19 EA	
MF-2009-19-B-2-A		2									100 LF	
MF-2009-19-B-2-B											X	
MF-2009-19-B-2-C											75LF	
MF-2009-19-B-3-A									M	ACID RESISTANT SINK (SIMILAR TO LAB SINK)	2EA	S
MF-2009-19-B-4-A										WHITE DUCT TAPE	8LF	
MF-2009-19-B-4-B											8LF	
MF-2009-19-A-4-C	Attic		Y								16LF	

AHERA Classifications: 1 - damaged or significantly damaged thermal system insulation ACM; 2 - damaged friable surfacing ACM; 3 - significantly damaged friable surfacing ACM; 4 - damaged or significantly damaged friable miscellaneous ACM; 5 - ACM with potential for damage; 6 - ACM with potential for significant damage; 7 - any remaining friable ACM or friable suspected ACM

Collected by: D. Alexander/J. Kinder Date: 10-26 Time:   
Relinquished by:  Date:  Time:   
Delivered by:  Date:  Time:   
Received by:  Date: NOV 03 2009 Time:

Date: 10-26-09 Project Manager: I. Doxey Project No.: 94515-00807 Laboratory Name: J3 Resources Turn around Time: 3 Day TAI  
Building No.: 14  
Inspector: D. Alexander/J. Kinder

### BULK SAMPLING SURVEY FORM

Sample No.	Type of Material	Frangible (Y/N)	Accessibility (Y/N)	Damage (H/M/L)	Potential Exposure for Human (H/M/L)	Vibration (H/M/L)	Condition	Priority Ranking (1 - 5)	Material Category	Sample Location (Unique Material Identifiers)	Quantity (LF or SF)	AHERA* Classification
MF-2009-19-1-5A	RM IPS	N	Y	L	L	L	G	4	M	12" TAN w/GOLD SPECK FLOOR TILE / BLACK WING	10 <sup>th</sup>	S
MF-												
MF-												
MF-2009-19-1-6A	RM 106 KIT	N	Y	L	L	L	G	4	M	BEIGE DIAMOND PATTERN ROLLED FLOOR COVERING	110 <sup>th</sup>	S
MF-2009-19-1-6B										OVER 12" FLOOR TILE (FLOOR TILE SIM. to HA-5)		
MF-2009-19-1-6C												
MF-2009-19-1-7A	FL 1 ELST	N	Y	L	H	L	G	4	M	PASTER WINGS		S
MF-2009-19-2-7B	FL 2 STAIRS											
MF-2009-19-2-7C	FL 2 STAIRS											
MF-												

AHERA Classifications: 1 - damaged or significantly damaged thermal system insulation ACM; 2 - damaged friable surfacing ACM; 3 - significantly damaged friable surfacing ACM; 4 - damaged or significantly damaged friable miscellaneous ACM; 5 - ACM with potential for damage; 6 - ACM with potential for significant damage; 7 - any remaining friable ACM or friable suspected ACM

Collected by: D. Alexander/J. Kinder Date: NOV 03 2009 Time: 11:00  
Relinquished by: [Signature] Date: NOV 03 2009 Time: 11:00  
Delivered by: [Signature] Date: NOV 03 2009 Time: 11:00  
Received by: [Signature] Date: NOV 03 2009 Time: 11:00

EFI Global, Inc.  
8100 Professional Place  
Landover, MD 20705  
240-764-1792 fax

**EFI Global**  
Complex Issues • Solid Solutions

Date: 10-26-09 Project Manager: T. Doxey Project No.: 94515-00807 Laboratory Name: J3 Resources Turn around Time: 3 Day IAT  
Building No.: 19  
Inspector: D. Alexander/J. Kinder

### BULK SAMPLING SURVEY FORM

Sample No.	Type of Material	Friable (Y/N)	Accessibility (Y/N)	Damage (H/M/L)	Potential for Human Exposure (H/M/L)	Vibration (H/M/L)	Condition	Priority Ranking (1 - 5)	Material Category	Sample Location (Unique Material Identifiers)	Quantity (LF or SF)	AHERA Classification
MF-2009-19-1-8A	RM 107	N	N	L	L	L	G	4	M	GYP CEILING TEXTURE & JOINT COMPOUND		S
MF-2009-19-1-8B	RM 102											
MF-2009-19-1-8C	RM 104											
MF-2009-19-1-9A	RM 104									YELLOW CARPET GLUE	1719	S
MF-2009-19-1-9B	RM 07										X	
MF-2009-19-1-9C	RM 104											
MF-2009-19-1-10A	RM 104									9" BRICK w/ TAN SPES BRICK UNDER CARPET MINERAL	1719	S
MF-2009-19-1-10B												
MF-2009-19-1-10C												
MF-												

AHERA Classifications: 1 - damaged or significantly damaged thermal system insulation ACM; 2 - damaged friable surfacing ACM; 3 - significantly damaged friable surfacing ACM; 4 - damaged or significantly damaged friable miscellaneous ACM; 5 - ACM with potential for damage; 6 - ACM with potential for significant damage; 7 - any remaining friable ACM or friable suspected ACM

Collected by: D. Alexander/J. Kinder Date: 10/26/09 Time: 10:30  
Relinquished by:  Date:  Time:   
Delivered by:  Date:  Time:   
Received by:  Date: NOV 03 2009 Time:

EFI Global, Inc.  
8100 Professional Place  
Landover, MD 20705  
240-764-1792 fax

**EFI Global**  
Complex Issues • Solid Solutions

Date: 10-26-09 Project Manager: T. Doxey Project No.: 94515-00807 Laboratory Name: J3 Resources Turn around Time: 3 Day TAT  
Building No.: 14  
Inspector: D. Alexander/J. Kinder

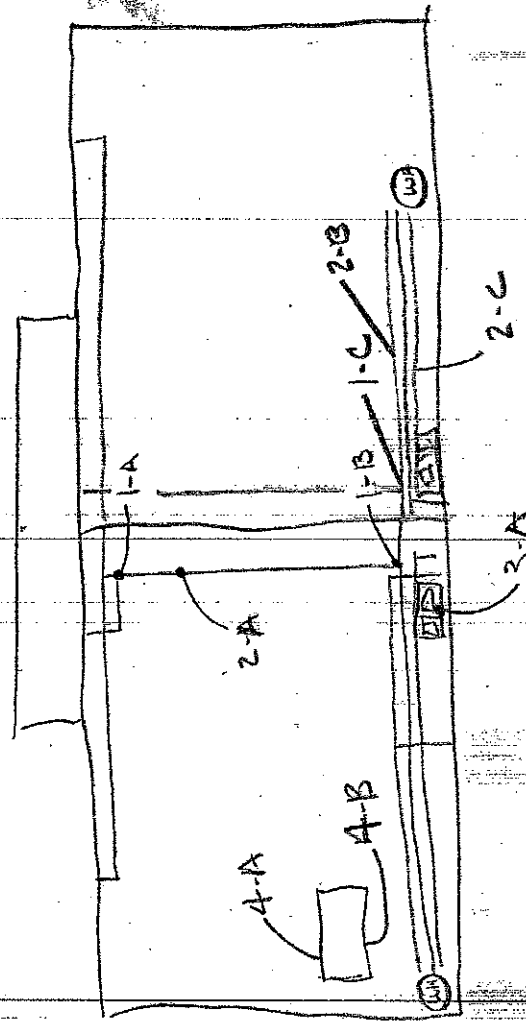
### BULK SAMPLING SURVEY FORM

Sample No.	Type of Material	Friable (Y/N)	Accessibility (Y/N)	Damage (H/M/L)	Potential for Human Exposure (H/M/L)	Vibration (H/M/L)	Condition	Priority Ranking (1 - 5)	Material Category	Sample Location (Unique Material Identifiers)	Quantity (LF or SF)	AHERA* Classification
MF- 2009 - 19 - 1 - 11A	RM 106	N	Y	L	L	L	G	4	M	Blue Diamond Polished Floor Covering (3 Boxes)	126 lb	5
MF- 2009 - 19 - 1 - 11B												
MF- 2009 - 19 - 1 - 11C												
MF- - - -												
MF- - - -												
MF- - - -												
MF- - - -												
MF- - - -												
MF- - - -												
MF- - - -												
MF- - - -												

AHERA Classifications: 1 - damaged or significantly damaged thermal system insulation ACM; 2 - damaged friable surfacing ACM; 3 - significantly damaged friable surfacing ACM; 4 - damaged or significantly damaged friable miscellaneous ACM; 5 - ACM with potential for damage; 6 - ACM with potential for significant damage; 7 - any remaining friable ACM or friable suspected ACM

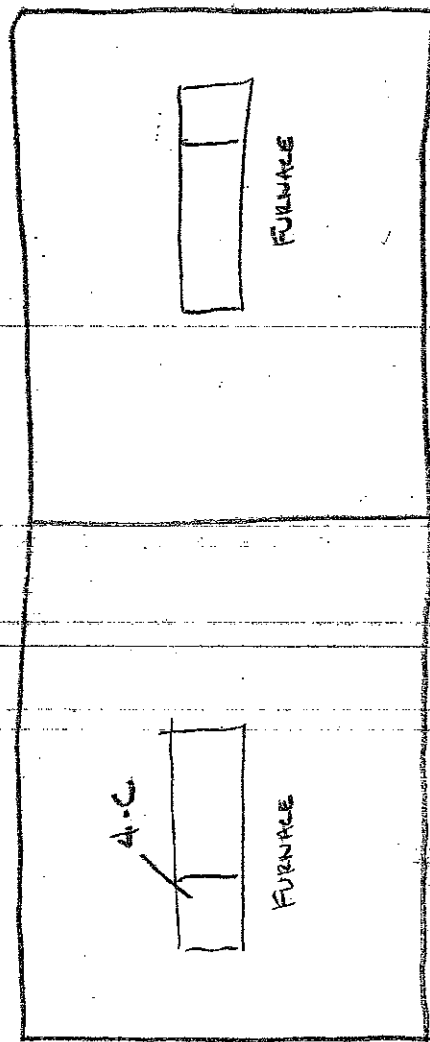
Collected by: D. Alexander/J. Kinder Date: 10-26-09 Time: 03:20  
Relinquished by: \_\_\_\_\_ Date: \_\_\_\_\_ Time: \_\_\_\_\_  
Delivered by: \_\_\_\_\_ Date: \_\_\_\_\_ Time: \_\_\_\_\_  
Received by: \_\_\_\_\_ Date: \_\_\_\_\_ Time: \_\_\_\_\_

DUCT BOOT - RUBBER NOT SAMPLED



BASEMENT  
BUDG 19  
NOT TO SCALE

8' LF WHITE DUCT TAPE ON BOTH SIDES (BOTH FURNACES)

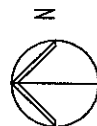


- DUCT BOOTS RUBBER - NOT SAMPLED
- HEATING WATER FIBERGLASS w/ TAPED JOINTS & PLASTIC FITTINGS

ATTIC  
BUDGET 14  
NOT TO SCALE

LEGEND

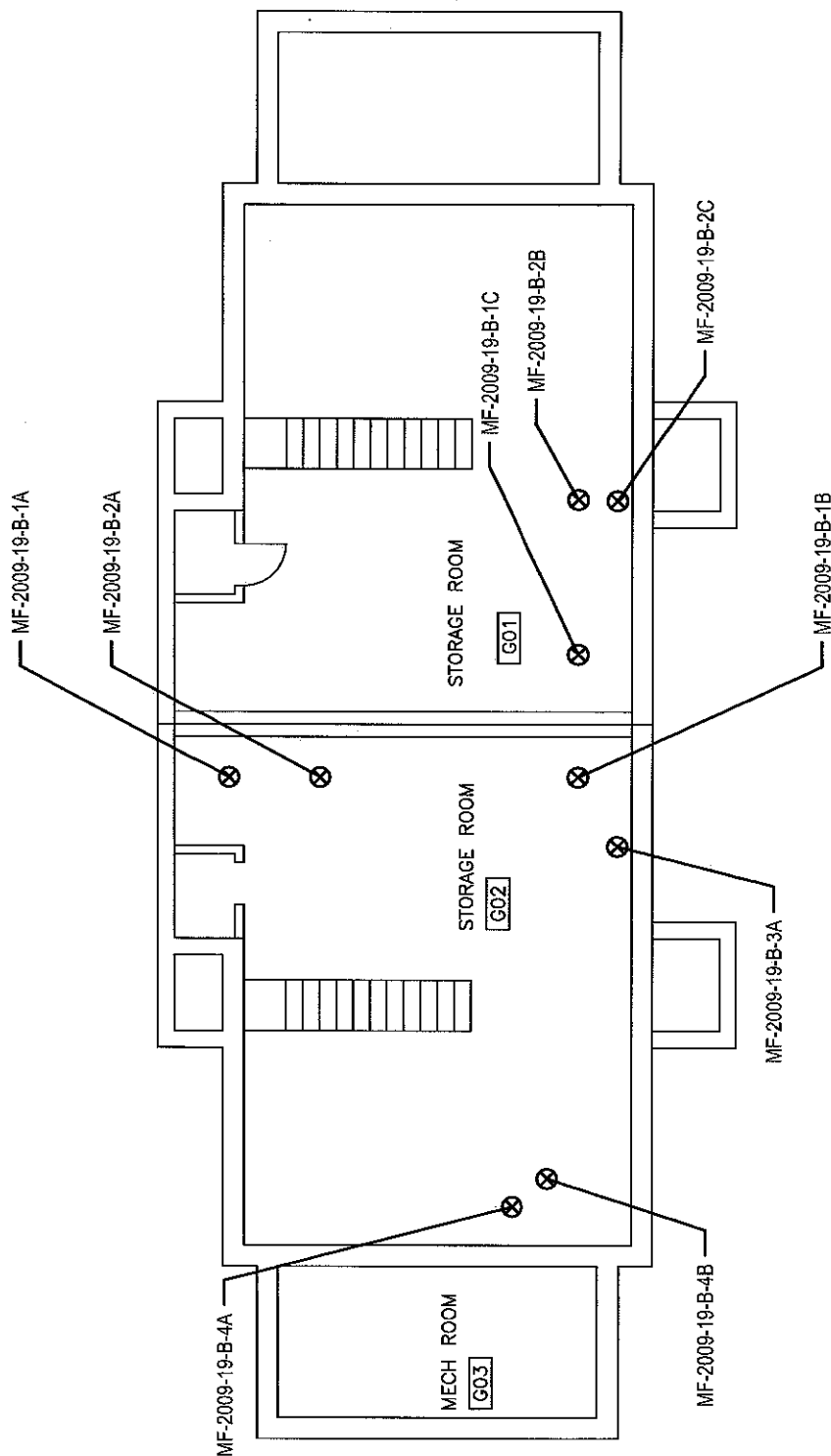
⊗ BULK SAMPLE LOCATION



NOTES

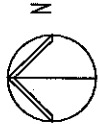
TVHS, ALVIN C. YORK CAMPUS  
SAMPLE LOCATION DRAWING  
BLDG #19, BASEMENT

DATE: OCTOBER 2009  
SCALE: NTS



**LEGEND**

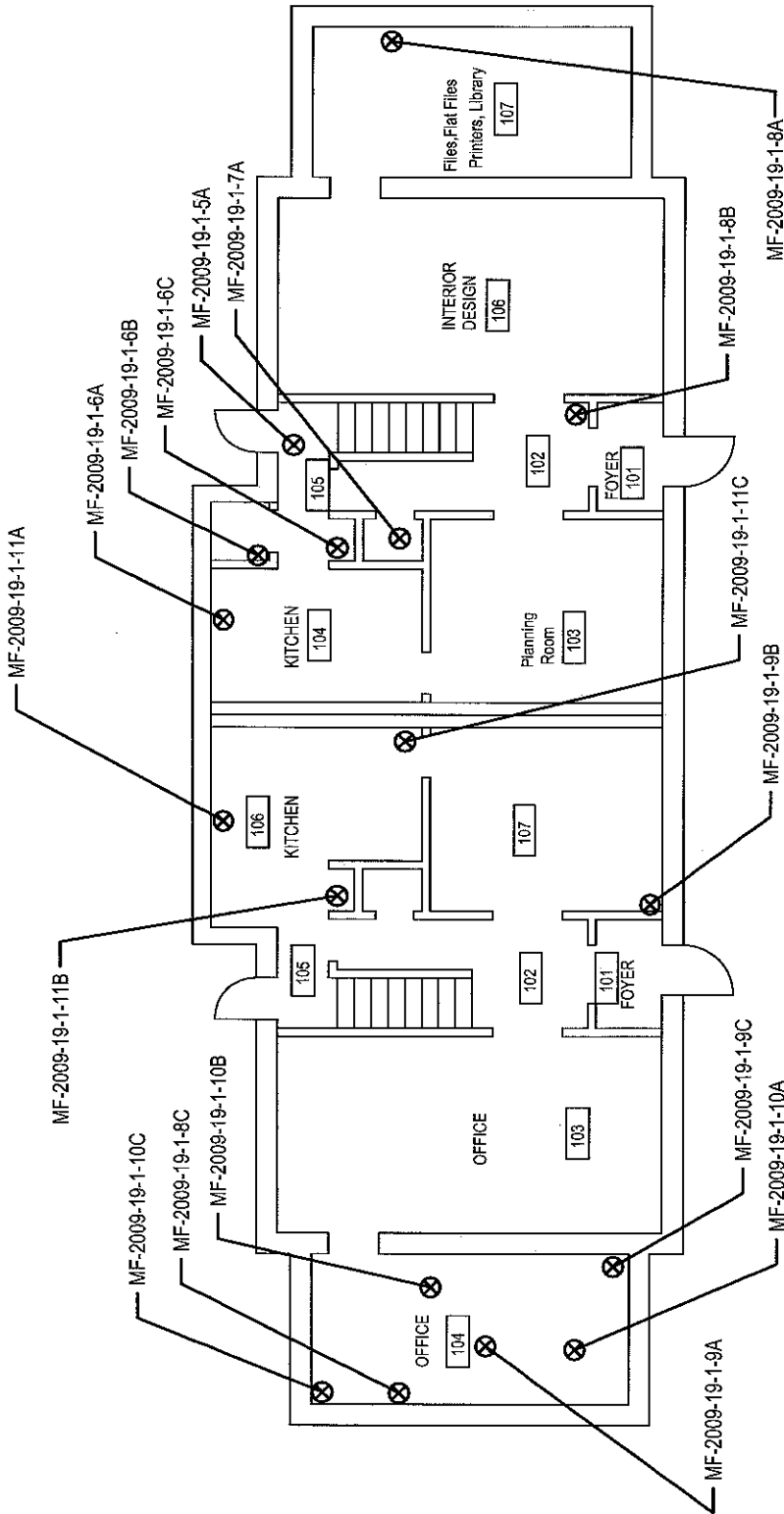
⊗ BULK SAMPLE LOCATION



**NOTES**

TVHS, ALVIN C. YORK CAMPUS  
 SAMPLE LOCATION DRAWING  
 BLDG #19, 1ST FLOOR

DATE: OCTOBER 2009  
 SCALE: NTS





**LEGEND**

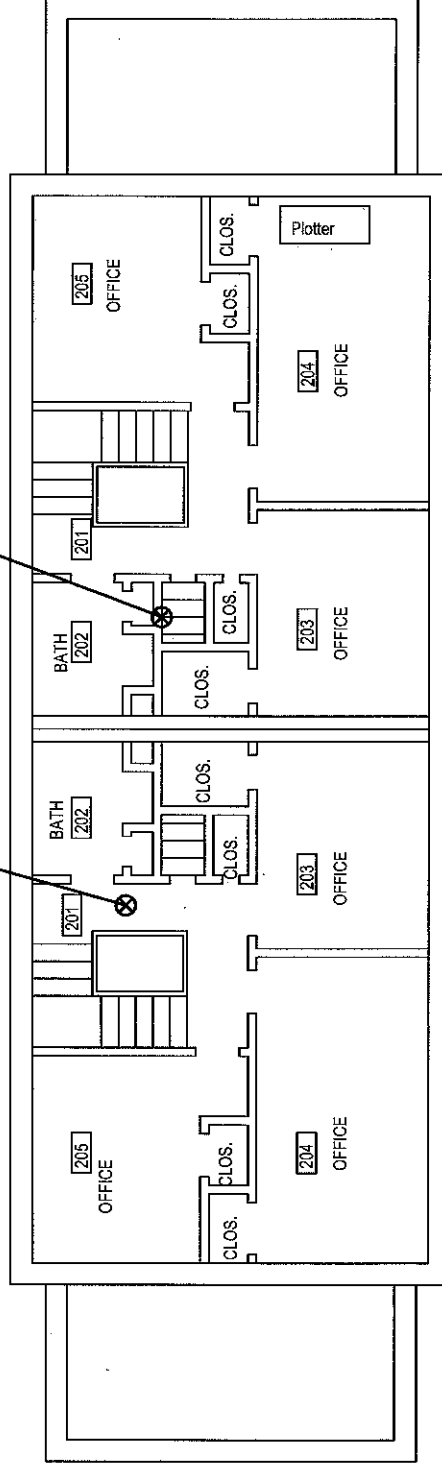
⊗ BULK SAMPLE LOCATION



**NOTES**

MF-2009-19-2-7C  
19 A

MF-2009-19-2-7B  
19 B



TVHS, ALVIN C. YORK CAMPUS  
 SAMPLE LOCATION DRAWING  
 BLDG #19, 2ND FLOOR

DATE: OCTOBER 2009  
 SCALE: NTS

LEGEND

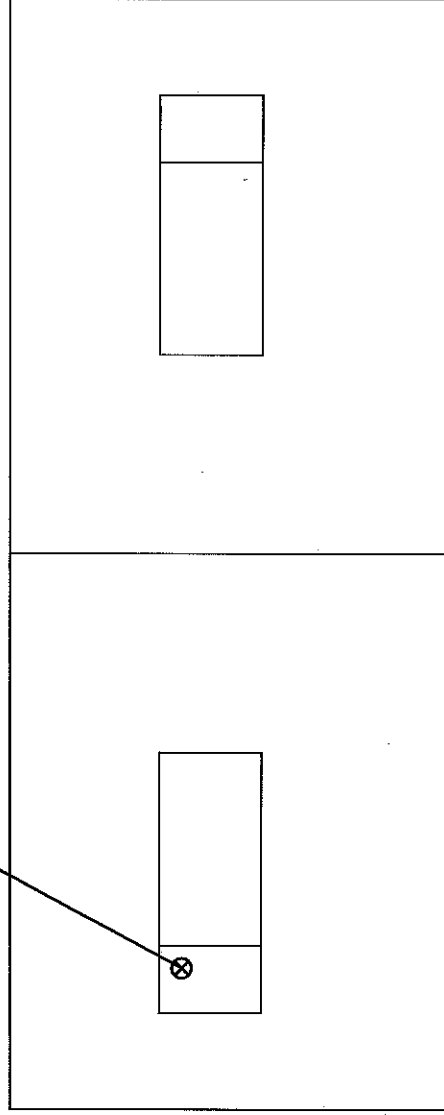
⊗ BULK SAMPLE LOCATION

NOTES

TVHS, ALVIN C. YORK CAMPUS  
SAMPLE LOCATION DRAWING  
BLDG #19, ATTIC

DATE: OCTOBER 2009  
SCALE: NTS

MF-2009-19-A-4C



**LEGEND**

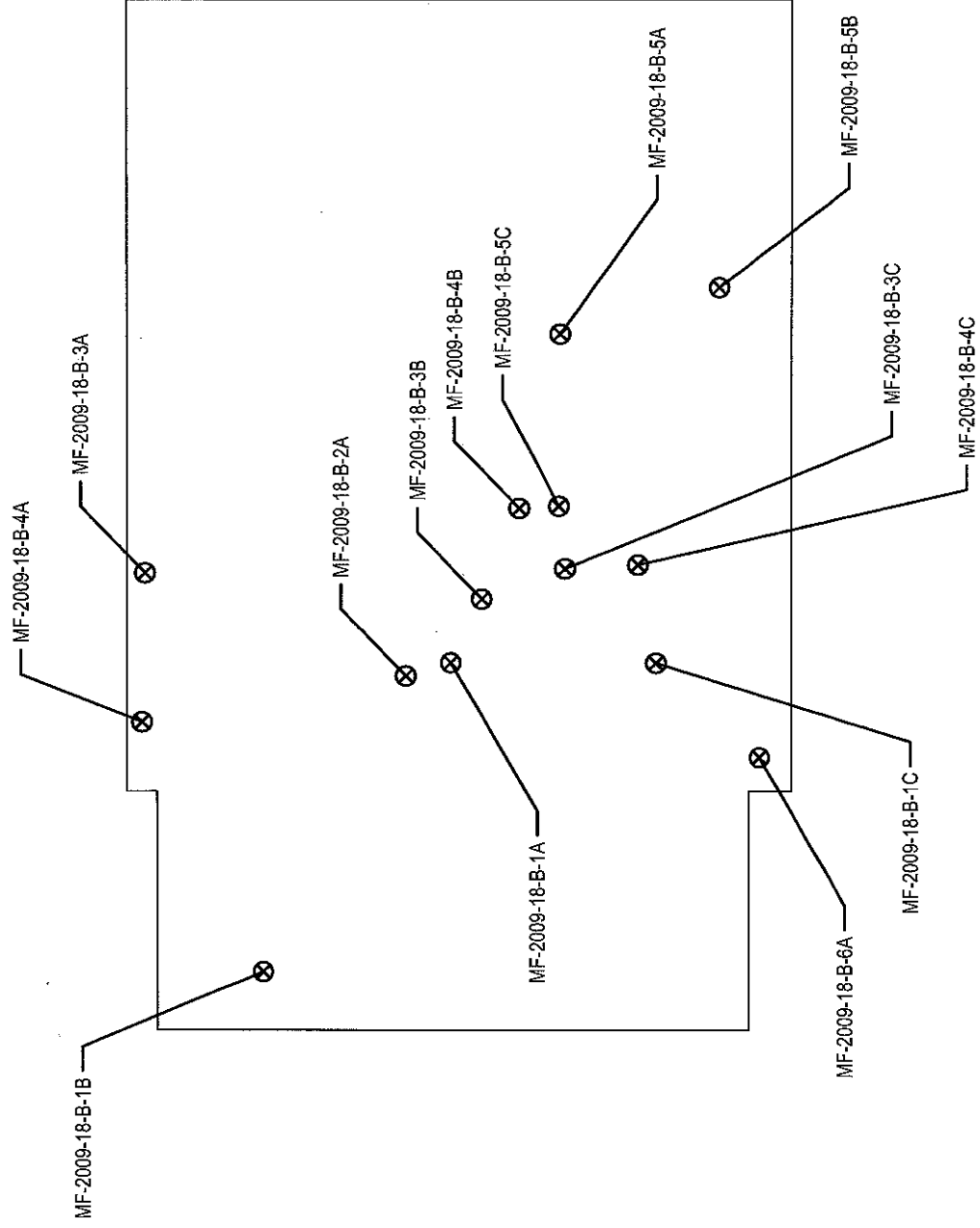
⊗ BULK SAMPLE LOCATION



**NOTES**

TVHS, ALVIN C. YORK CAMPUS  
 SAMPLE LOCATION DRAWING  
 BLDG #18, BASEMENT

DATE: OCTOBER 2009  
 SCALE: NTS



**LEGEND**

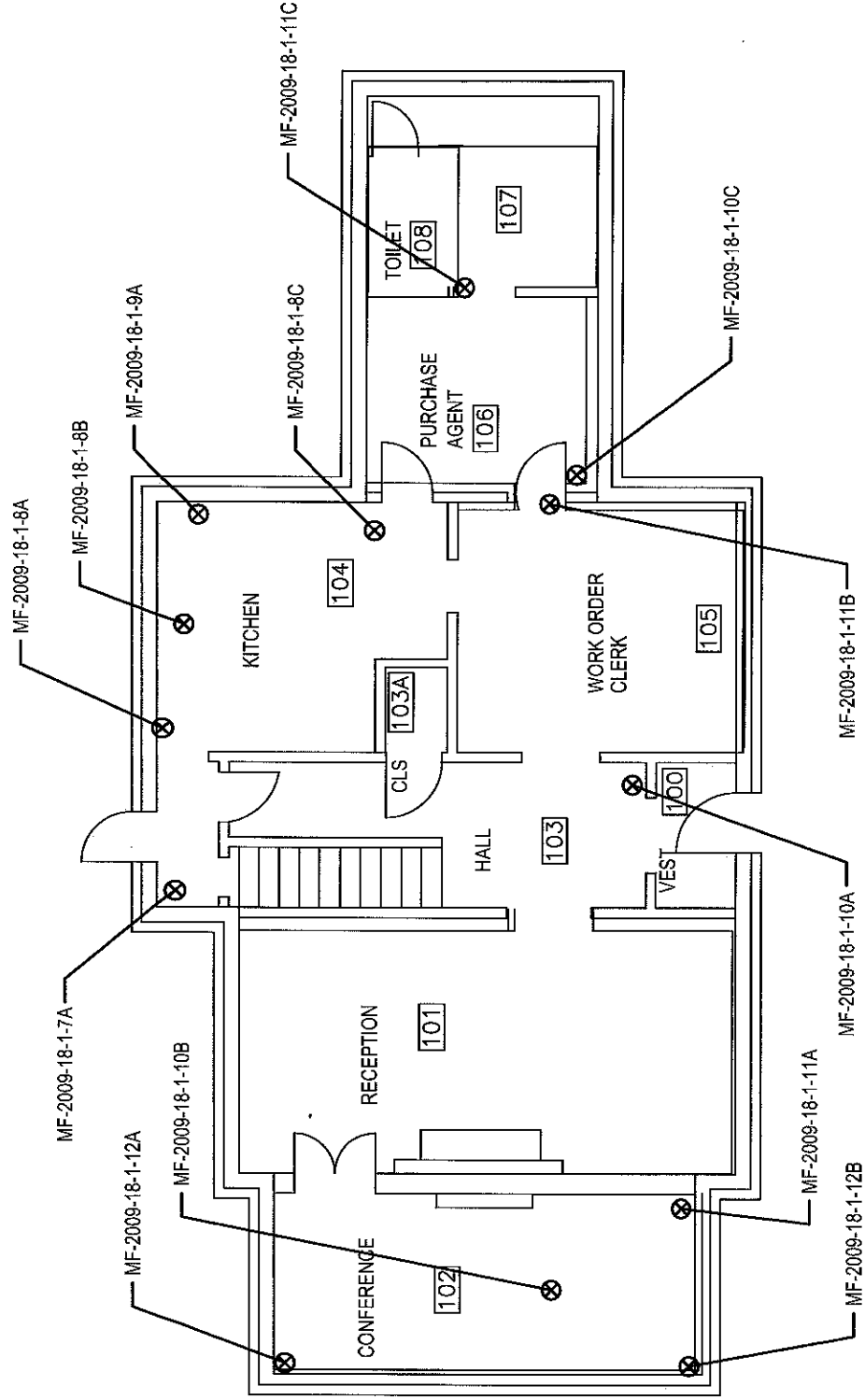
⊗ BULK SAMPLE LOCATION



**NOTES**

TVHS, ALVIN C. YORK CAMPUS  
 SAMPLE LOCATION DRAWING  
 BLDG #18, 1ST FLOOR

DATE: OCTOBER 2009  
 SCALE: NTS



**LEGEND**

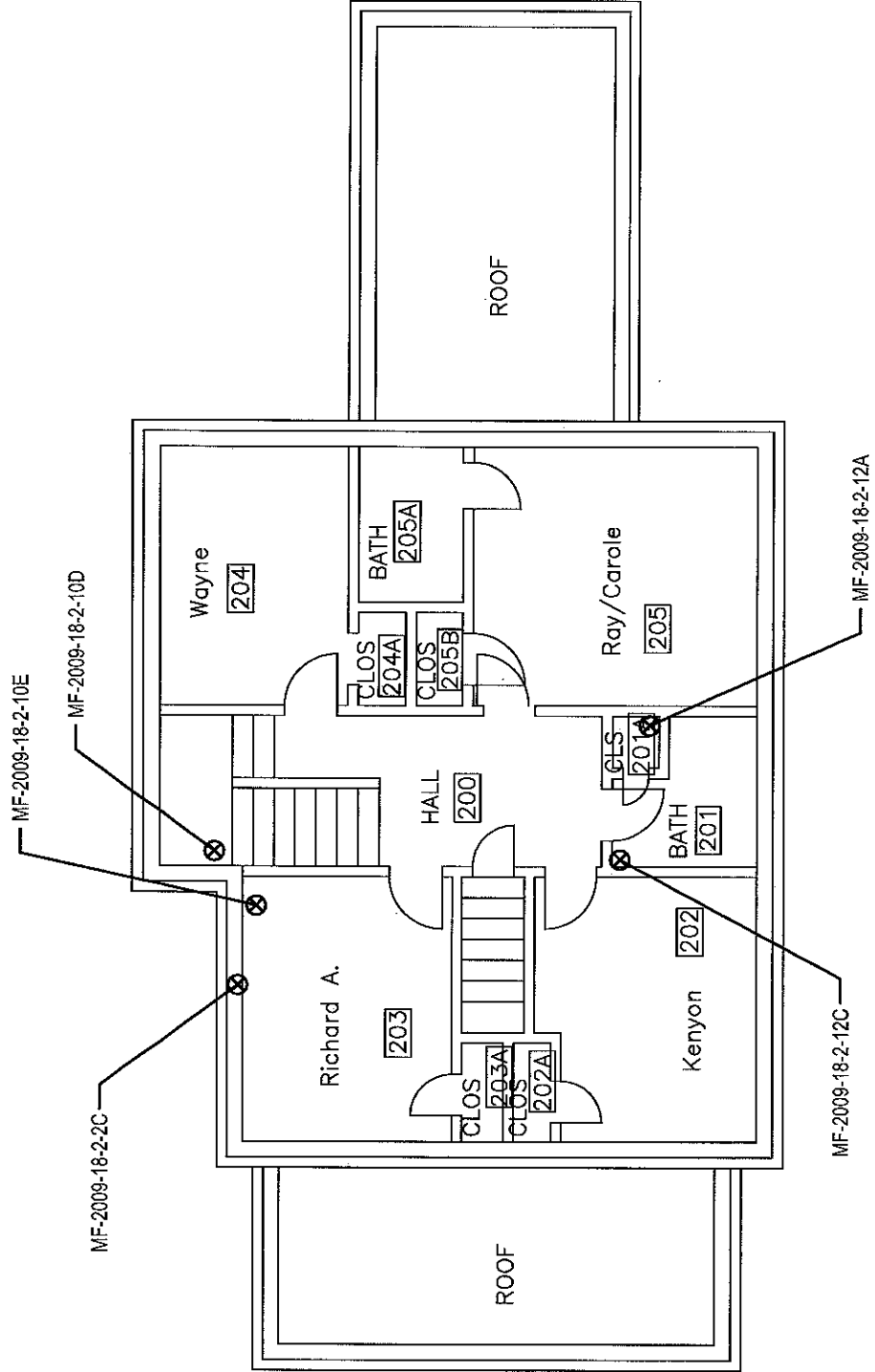
⊗ BULK SAMPLE LOCATION



**NOTES**

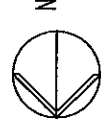
TVHS, ALVIN C. YORK CAMPUS  
 SAMPLE LOCATION DRAWING  
 BLDG #18, 2ND FLOOR

DATE: OCTOBER 2009  
 SCALE: NTS



LEGEND

⊗ BULK SAMPLE LOCATION



NOTES

TVHS, ALVIN C. YORK CAMPUS  
SAMPLE LOCATION DRAWING  
BLDG #18, ATTIC

DATE: OCTOBER 2009  
SCALE: NTS

