

181

TYPICAL DETAIL OF ANCHOR

NOT TO SCALE

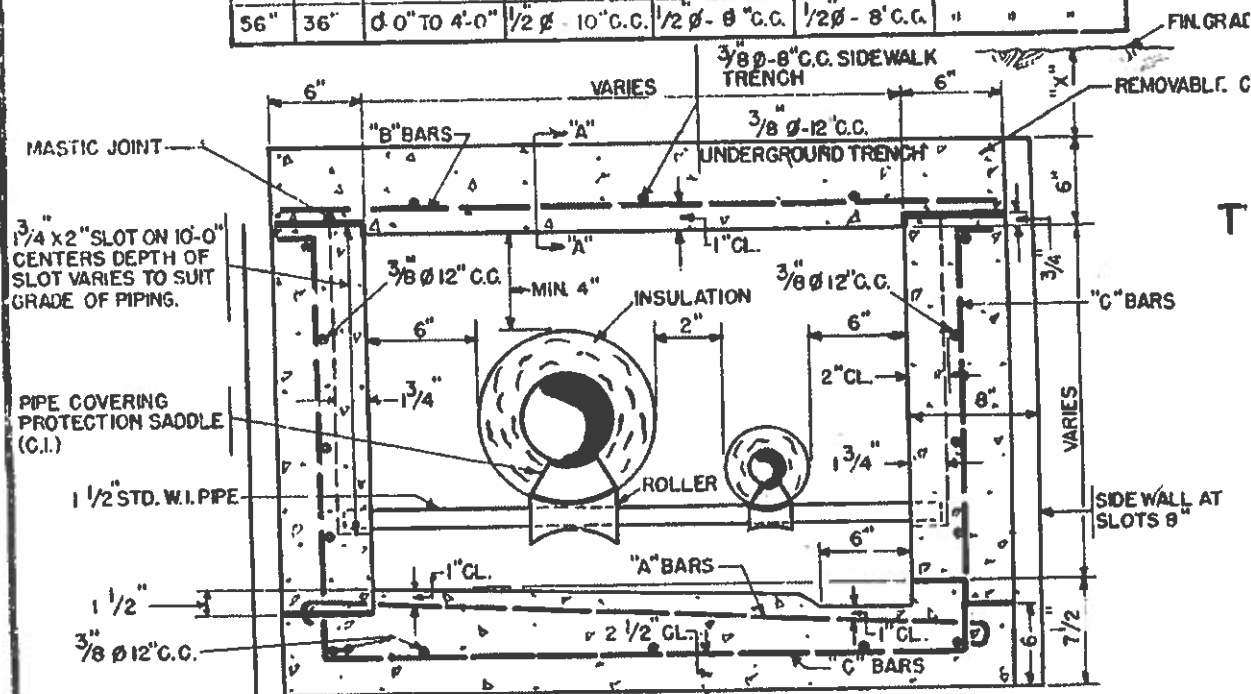
SIDEWALK TRENCH  $\frac{3}{8}$ "  $\phi$  8" C.C.

UNDERGROUND TRENCH  $\frac{3}{8}$ "  $\phi$  12" C.C.

1/4" JOINT PACK WITH OAKUM  
8" FILL WITH MASTIC



SCHEDULE OF REINFORCING FOR UNDERGROUND AND SIDEWALK TRENCH						
TRENCH		EARTH	BAR SIZE AND			SPACING
MAX. WIDTH	MAX. DEPTH	COVER "X"	A	B	C	TEMP. BARS
42"	36"	0'-0" TO 4'-0"	3/8 Ø - 9" C.C.	3/8 Ø - 9" C.C.	1/2 Ø - 18" C.C.	3/8 Ø AS SHOWN
42"	36"	4'-0" TO 7'-0"	1/2 Ø - 10" C.C.	1/2 Ø - 9" C.C.	3/8 Ø - 14" C.C.	" " "
56"	36"	0'-0" TO 4'-0"	1/2 Ø - 10" C.C.	1/2 Ø - 8" C.C.	1/2 Ø - 8" C.C.	" " "



TYPICAL DETAIL OF UNDERGROUND & SIDEWALK CONCRETE  
PIPE TRENCH