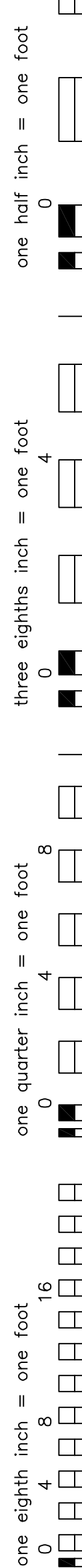


one eighth inch = one foot	one quarter inch = one foot	three eighths inch = one foot	one half inch = one foot	three quarters inch = one foot	one inch = one foot	one and one half inches = one foot	three inches = one foot
0 4 8 16	0 4 8	0 4 8	0 4	0 2	0 6	0 6	0 6

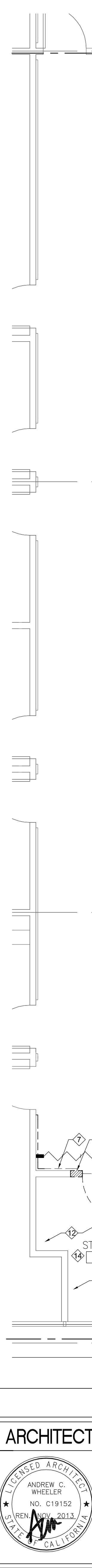
- | one eighth inch = one foot | one quarter inch = one foot | three eighths inch = one foot | one half inch = one foot | three quarters inch = one foot | one inch = one foot | one and one half inches = one foot | three inches = one foot |
|----------------------------|-----------------------------|-------------------------------|--------------------------|--------------------------------|---------------------|------------------------------------|-------------------------|
| 0 4 8 16 | 0 4 8 | 0 4 8 | 0 4 | 0 4 | 0 6 | 0 6 | 0 6 |
| | | | | | | | |



one eighth inch = one foot

3

3



3

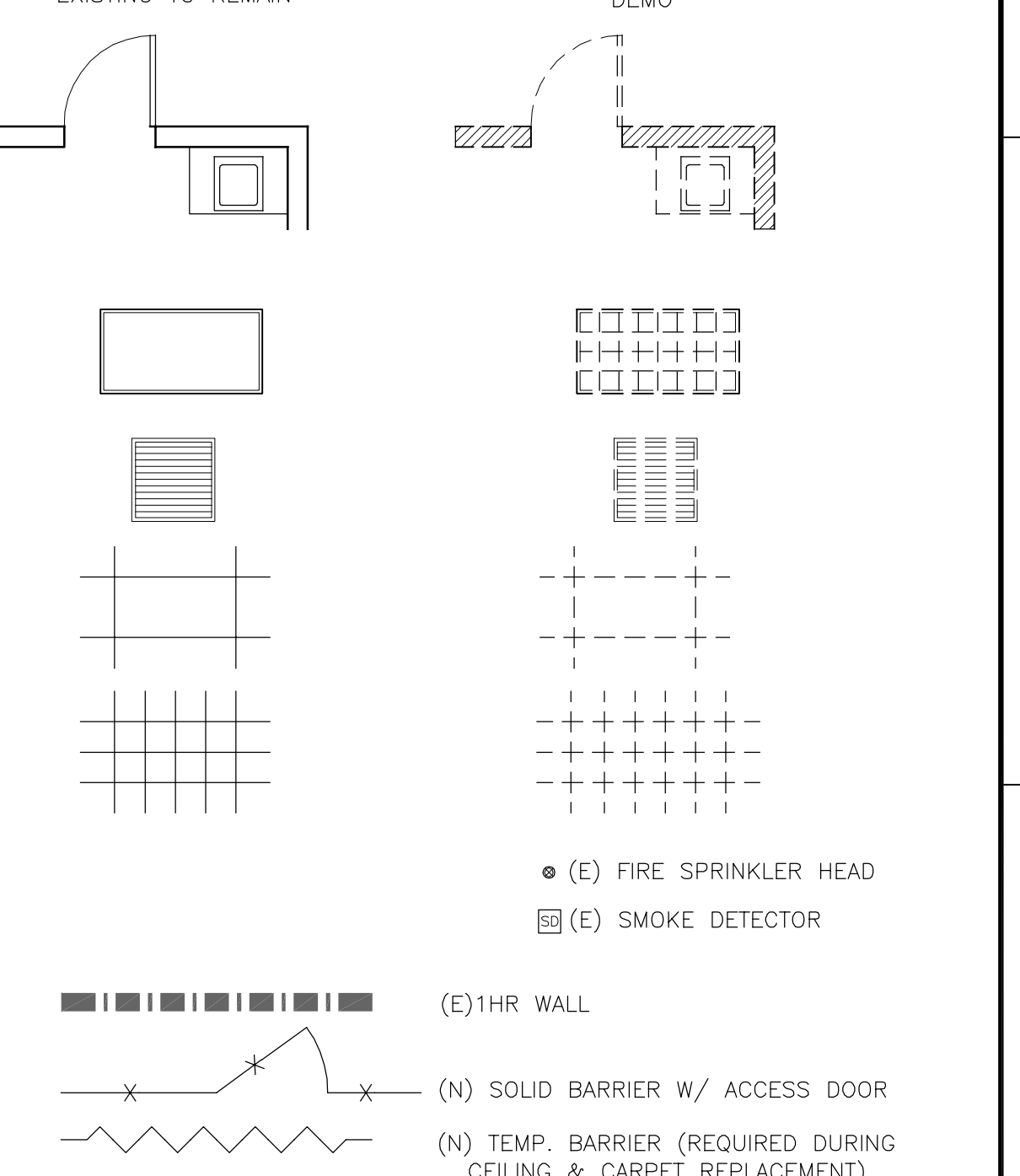
DEMO (E) PORTION OF WALL FOR NEW WORK- SEE RENOVATION PLAN FOR

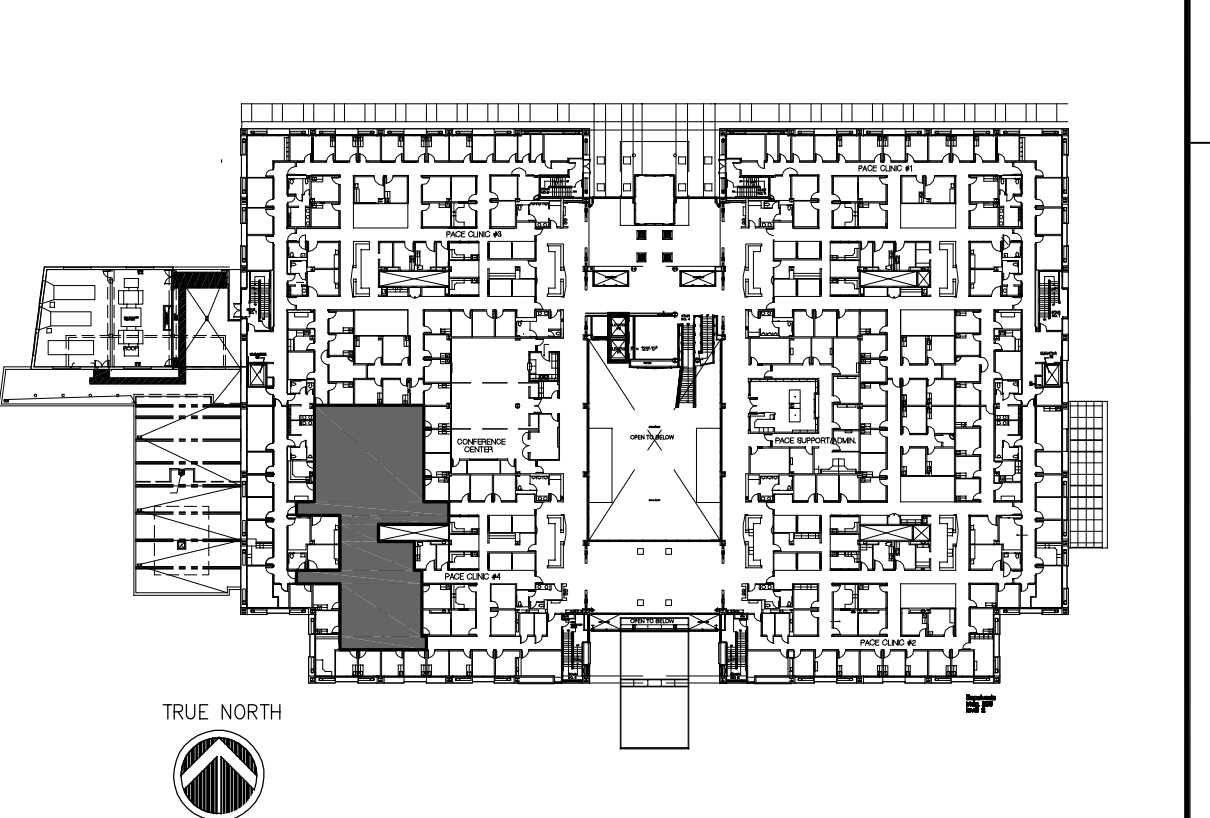
EXTENTS OF NEW WORK.
DEMO (5) DOOR AND FRAME

- DEMO (E) DOOR AND FRAME TO REMAIN - PROTECT IN PLACE.
DEMO (E) BUILT-IN CASEWORK FOR NEW WORK.
DEMO (E) PLUMBING FIXTURES AND ACCESSORIES. SEE PLUMBING DRAWINGS.
DEMO (E) FLOOR FINISHES, PATCH AND REPAIR AS NEEDED TO RECEIVE NEW FLOOR FINISH. REFERENCE FINISH PLAN FOR EXTENTS OF DEMOLITION WORK.
DEMO (E) WALL MOUNT EQUIPMENT. PATCH AND REPAIR WALL AS REQUIRED TO FINISH WALL TO LEVEL 5 FINISH FOR REWORK.
REMOVE PORTION OF (E) WOOD CHAIR RAIL AND CRASH RAIL AT WALLS BEING REMOVED.
REMOVE PORTION OF NON-BEARING MIL. FRAMING AT THE (E) DOOR OPENING TO ACCOMMODATE THE PLACEMENT OF A (N) ENLARGED DOOR-- SEE SCHEDULE FOR SIZE.
(E) DOOR AND FRAME TO REMAIN-- PROTECT IN PLACE.
REMOVE ENTIRE (E) WALL COVERING AT THIS WALL-- PATCH AND REPAIR WALL AS REQUIRED TO ACHIEVE A LEVEL 5 FINISH.
(E) WOOD CHAIR RAIL AND CRASH RAIL TO REMAIN-- PROTECT IN PLACE.
DEMO (E) WALL FINISH TO FRAMING (COMPLETE GUT). PREP FOR NEW WORK.
(E) BUILT-IN CASEWORK TO REMAIN-- PROTECT IN PLACE.
REMOVE (E) FREESTANDING FURNISHINGS, CABINETS, WALL MOUNTED ACCESSORIES AND FIXTURES AT AREA OF NEW WORK. COORDINATE LOCATION WITH ARCHITECT FOR TEMPORARY STORAGE OR STAGING OF MATERIALS.
REMOVE PORTION OF (E) WALL TO ACCOMMODATE INSTALL OF NEW WINDOW-- SEE RENOVATION PLAN.

Sketch #3

EXISTING TO REMAIN	DEMO
--------------------	------





TRUE

BUILDING 000

2ND. FLOOR WEST

16111 PLUMMER AVENUE
NORTH HAVEN, C.T. 06460

Date
01/23/2012

Building Number

	Drawing Number

AD100D

Dwg. -- 01

9

Department of

Veterans Affairs

GKK ID. 4

1

7 |

GKK ID. 40177