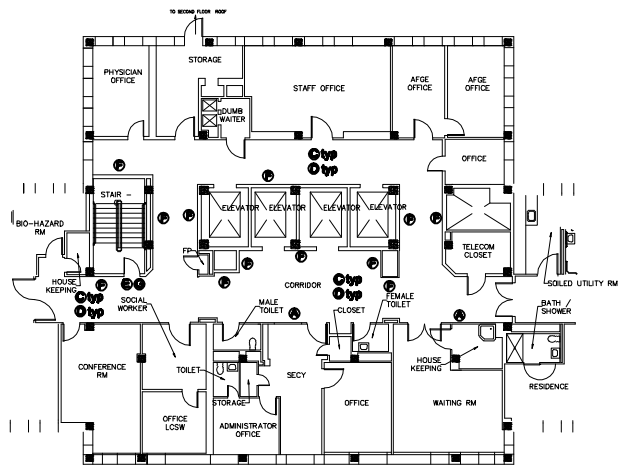


Floor 2- Interior Finishes
Scale:



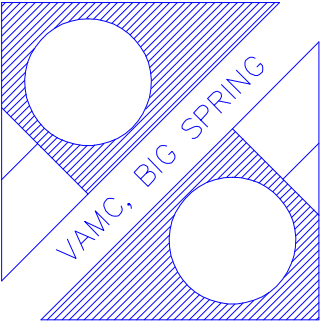
Floor 3- Interior Finishes
Scale:

- Phasing
1. **1st floor corridor West, front:** Remove existing Type II vinyl wall covering and handrail/bumper guards in sections, resurfacing the area of work in FR glass with 2-pwall type support and entry system, removing waste as covered area. Remove the 1/4" corridor may be impeded at any time so as to allow patient and staff traffic to continue during normal business hours. Conduct any sanding operations after 4:30pm or on weekends and schedule with COTR at least 72 hours (3 days) in advance. Prepare walls, texture, paint, replace wall protection, and install new core base. At Contractor's option, wall areas may be stripped of VMC in sections and remain bare for painting of the entire West corridor at once using night or weekend hours for a spray application. AT NO TIME will spray application painting be conducted during normal business hours. Conduct all work so as not to block access to doors, exits, or elevator shafts previously arranged with COTR with a posted interim Life Safety Plan. THE AREA WILL BE OCCUPIED DURING NORMAL BUSINESS HOURS.
 2. **1st floor corridor East, front:** Remove existing Type II vinyl wall covering and handrail/bumper guards in sections, resurfacing the area of work in FR glass with 2-pwall type support and entry system, removing waste as covered area. No more than 1/4" corridor may be impeded at any time so as to allow patient and staff traffic to continue during normal business hours. Conduct any sanding operations after 4:30pm or on weekends and schedule with COTR at least 72 hours (3 days) in advance. Prepare walls, texture, paint, replace wall protection, and install new core base. At Contractor's option, wall areas may be stripped of VMC in sections and remain bare for painting of the entire East corridor at once using night or weekend hours for a spray application. AT NO TIME will spray application painting be conducted during normal business hours. Conduct all work so as not to block access to doors, exits, or elevator shafts previously arranged with COTR with a posted interim Life Safety Plan. THE AREA WILL BE OCCUPIED DURING NORMAL BUSINESS HOURS.
 3. **4th floor Elevator Lobby:** Remove existing Type II vinyl wall covering and handrail/bumper guards in sections, resurfacing the area of work in FR glass with 2-pwall type support and entry system, removing waste as covered area. No more than 1/4" corridor may be impeded at any time so as to allow patient and staff traffic to continue during normal business hours. Conduct any sanding operations after 4:30pm or on weekends and schedule with COTR at least 72 hours (3 days) in advance. Prepare walls, texture, paint, replace wall protection, and install new core base. At Contractor's option, wall areas may be stripped of VMC in sections and remain bare for painting of the entire 4th floor Elevator Lobby at once using night or weekend hours for a spray application. AT NO TIME will spray application painting be conducted during normal business hours. Be the precaution shall be taken to block access to the Life Area, which operates 24/7. Conduct all work so as not to block access to doors, exits, or elevator shafts previously arranged with COTR with a posted interim Life Safety Plan. THE AREA WILL BE OCCUPIED DURING NORMAL BUSINESS HOURS.
 4. **4th floor Elevator Lobby:** Remove existing Type II vinyl wall covering, wall painting and handrail/bumper guards in sections, resurfacing the area of work in FR glass with 2-pwall type support and entry system, removing waste as covered area. No more than 1/4" corridor may be impeded at any time so as to allow patient and staff traffic to continue during normal business hours. Conduct any sanding operations after 4:30pm or on weekends and schedule with COTR at least 72 hours (3 days) in advance. Prepare walls, texture, paint, replace wall protection, and install new core base. At Contractor's option, wall areas may be stripped of VMC in sections and remain bare for painting of the entire 4th floor Elevator Lobby at once using night or weekend hours for a spray application. AT NO TIME will spray application painting be conducted during normal business hours. Be the precaution shall be taken to block access to the Life Area, which operates 24/7. Conduct all work so as not to block access to doors, exits, or elevator shafts previously arranged with COTR with a posted interim Life Safety Plan. THE AREA WILL BE OCCUPIED DURING NORMAL BUSINESS HOURS.

Construction Notes	
1	Remove existing VMC, remove core base, remove and attach wall protection products including handrails, bumper guards, and corner protection along with all hardware, remove and attach cover plates. Patch holes or imperfections greater than 1/4" in diameter, prepare surface to receive paint, texture, apply primer coat, and 2 finish coats of paint as specified in Finish Schedule. Re-attach wall protection products and cover plates.
2	Where wall is painted and not covered in VMC, patch holes or imperfections greater than 1/4" in diameter, prepare surface to receive new paint, texture to match new work, apply primer coat and 2 finish coats of paint as specified in Finish Schedule. Re-attach wall protection products and cover plates.
3	Prepare door frames for painting by filling minor imperfections, light sanding, application of primer and paint as specified in Finish Schedule. Door frames will be painted on both sides. Caulk where joint of cover VMC are evident between door frame and adjoining wall.
4	Where visible fire alarm, fire pull stations, or other warning device occurs, notify COTR with 72 hour notice of need to remove these from the wall. VA Biomed staff will need to approve and assist with the removal and replacement of these items.
5	Do not impede access to this emergency door without an interim Life Safety Plan in place and a posted monitor.
6	Where wall is to receive new Type II Vinyl Wallcovering, remove existing VMC or wall painting, patch holes or imperfections greater than 1/4" in diameter, prepare surface to receive new VMC, apply primer coat specifically for use under VMC, and apply wallcovering as specified in Finish Schedule. Re-attach wall protection products and cover plates.
7	Clean metal door surfaces, fill minor imperfections, prime with high adhesion metal primer, and paint with Alkyd Enamel.

Finish Schedule	
P1	Half-powder alkali blocking latex primer with Low VOCs for sheetrock and plaster surfaces.
P2	Waterborne Acrylic Adhesion Primer OR Enamel Primer with Low VOC for surface preparation and adhesion; minimums of hollow metal door frames.
P3	Interior Acrylic latex Low VOC wall paint for sheetrock and plaster surfaces semi-gloss finish. Refer to Color Schedule.
P4	Alkyd Enamel Low VOC Tinted Paint for hollow metal door frames. Refer to Color Schedule.
B1	4" Rubber cove base, standard profile. Refer to Color Schedule.
B2	4" Rubber cove base, long low profile. Refer to Color Schedule.
B3	6" Rubber cove base, long low profile. Refer to Color Schedule.
WC1	Type II Vinyl Wallcovering, Color 1, Random Match.
WC2	Type II Vinyl Wallcovering, Color 2, Random Match.

Revisions: _____ Date: _____

Drawing Title 2nd & 3rd Floor Interior Finish Renovations		Project Title Corridor Renovations		Date 12-21-11 Project No. 519-12-210	 VAMC BIG SPRING	VA Department of Veterans Affairs
Approved: _____	Building Number 01	Checked _____	Drawn LB	Drawing No. A3		
Approved: _____	Location VAMC BIG SPRING					