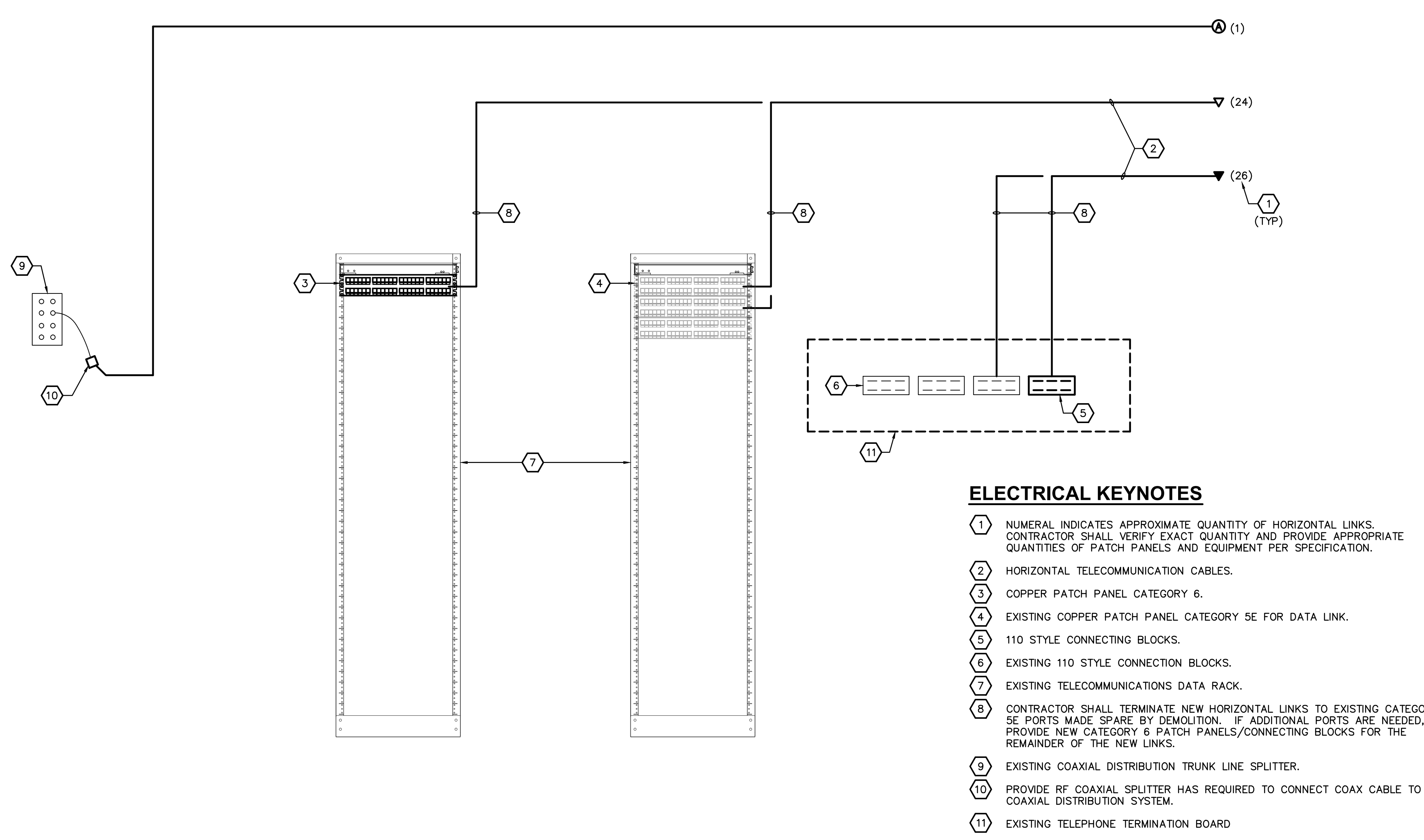
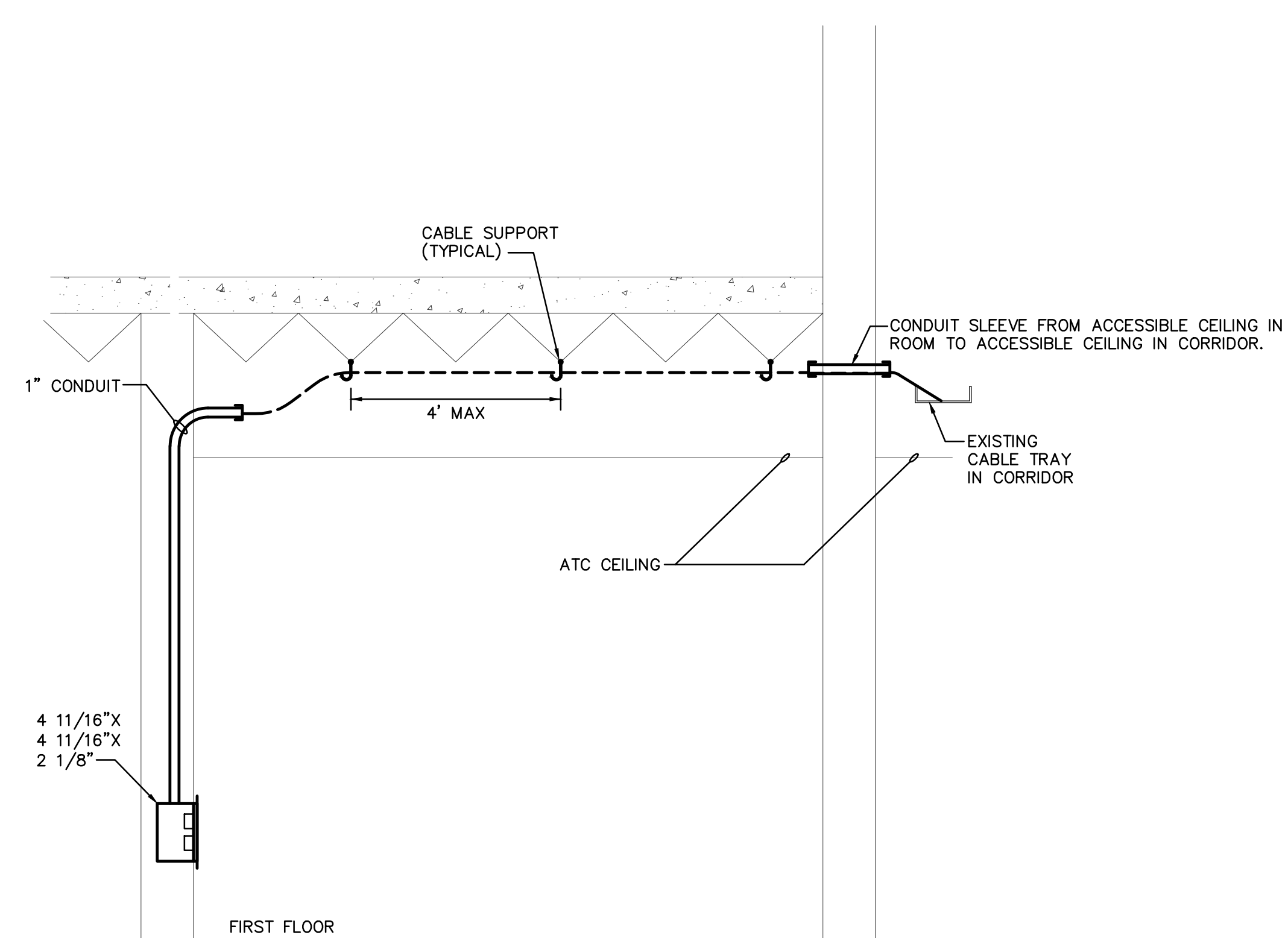


1  
2  
3  
4  
5  
6  
7  
8  
9  
10  
11  
12  
13  
14  
15  
16  
17  
18  
19  
20  
21  
22  
23  
24  
25  
26  
27  
28  
29  
30  
31  
32  
33  
34  
35  
36  
37  
38  
39  
40  
41  
42  
43  
44  
45  
46  
47  
48  
49  
50  
51  
52  
53  
54  
55  
56  
57  
58  
59  
60  
61  
62  
63  
64  
65  
66  
67  
68  
69  
70  
71  
72  
73  
74  
75  
76  
77  
78  
79  
80  
81  
82  
83  
84  
85  
86  
87  
88  
89  
90  
91  
92  
93  
94  
95  
96  
97  
98  
99  
100



- ELECTRICAL KEYNOTES**
- 1 NUMERAL INDICATES APPROXIMATE QUANTITY OF HORIZONTAL LINKS. CONTRACTOR SHALL VERIFY EXACT QUANTITY AND PROVIDE APPROPRIATE QUANTITIES OF PATCH PANELS AND EQUIPMENT PER SPECIFICATION.
  - 2 HORIZONTAL TELECOMMUNICATION CABLES.
  - 3 COPPER PATCH PANEL CATEGORY 6.
  - 4 EXISTING COPPER PATCH PANEL CATEGORY 5E FOR DATA LINK.
  - 5 110 STYLE CONNECTING BLOCKS.
  - 6 EXISTING 110 STYLE CONNECTION BLOCKS.
  - 7 EXISTING TELECOMMUNICATIONS DATA RACK.
  - 8 CONTRACTOR SHALL TERMINATE NEW HORIZONTAL LINKS TO EXISTING CATEGORY 5E PORTS MADE SPARE BY DEMOLITION. IF ADDITIONAL PORTS ARE NEEDED, PROVIDE NEW CATEGORY 6 PATCH PANELS/CONNECTING BLOCKS FOR THE REMAINDER OF THE NEW LINKS.
  - 9 EXISTING COAXIAL DISTRIBUTION TRUNK LINE SPLITTER.
  - 10 PROVIDE RF COAXIAL SPLITTER HAS REQUIRED TO CONNECT COAX CABLE TO THE COAXIAL DISTRIBUTION SYSTEM.
  - 11 EXISTING TELEPHONE TERMINATION BOARD.

**5 TELECOMMUNICATION CONNECTIVITY SCHEMATIC**  
NO SCALE



**2 TELECOMMUNICATION HORIZONTAL PATHWAY SCHEMATIC**  
NO SCALE

LUMINAIRE SCHEDULE								
MARK	MANUFACTURER	CATALOG NO.	LAMPS		FINISH	DESCRIPTION	REMARKS	ACCEPTABLE MANUFACTURERS
			QTY	TYPE				
A	WILLIAMS	17-4-232-A-EB2	2	F032/841 T-8	WHITE	4' SURFACE MOUNTED WRAP		REMARK 1
B	WILLIAMS	50G-S24-232-RA12125-EB2	2	F032/841 T-8	WHITE	2X4' RECESSED GRID MOUNTED PRISMATIC TROFFER		REMARK 1
C	WILLIAMS	50G-S24-332-RA12125-EB3	3	F032/841 T-8	WHITE	2X4' RECESSED GRID MOUNTED PRISMATIC TROFFER		REMARK 1
M	WINONA	5622-C-48F	2	F028/841 T-5	WHITE	4' BARMOUNT WALL MOUNT UP/DOWN DISTRIBUTION		-
MA	WINONA	5622-C-24F	2	F014/841 T-5	WHITE	2' BARMOUNT WALL MOUNT UP/DOWN DISTRIBUTION		-
U	WILLIAMS	2SF48-132	1	F032/841 T-8	WHITE	4' SOLID FRONT UNDER CABINET		REMARK 1
UA	WILLIAMS	2SF-36-125	1	F025/841 T-8	WHITE	3' SOLID FRONT UNDER CABINET		REMARK 1

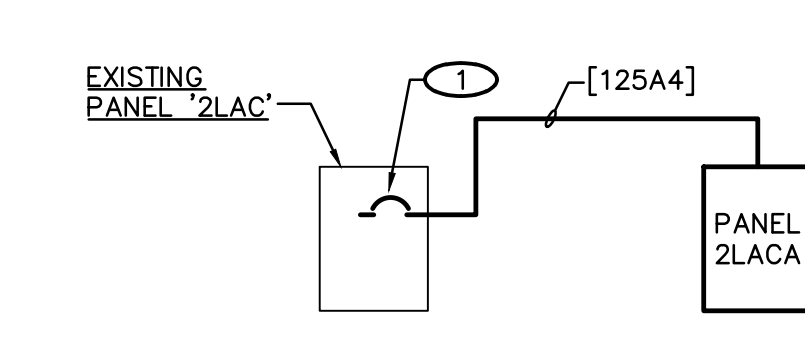
REMARKS:  
SEE SPECIFICATIONS 16511 FOR ADDITIONAL REQUIREMENTS FOR LUMINAIRES, LAMPS AND BALLASTS.  
1. COLUMBIA, DAY-BRITE, LITHONIA, LIGHTOLIER AND METALUX ARE ACCEPTABLE MANUFACTURERS FOR FIXTURE TYPE INDICATED.

PANEL 2LACA												
208/120 VOLT, 3 PHASE, 4 WIRE												
125 AMP M.L.O.												
AIC: 22000 AMPS SYM												
FLUSH MOUNTED												
CCT NO	LOAD DESCRIPTION	LOAD V.A.	REMARKS	P	AMP SIZE	Ø	AMP SIZE	P	REMARKS	LOAD V.A.	LOAD DESCRIPTION	CCT NO
1	THERAPIST S202	800		1	20	A	20	1	G	1100	REFRIGERATOR S202B	2
3	TREATMENT AREA S202A	400		1	20	B	20	1		1100	DISHWASHER S202B	4
5	KITCHEN S202B	600		1	20	C	20	1		1500	MICROWAVE S202B	6
7	WORKSTATION S2111	1000		1	20	A	20	1		300	RANGE HOOD S202B	8
9	WORKSTATION S2111	800		1	20	B	20	1		200	COUNTER TOP RECEPT. S202B	10
11	COPY/PRINTER S211	600		1	20	C	50	2	S, [60A3]	5000	RANGE S202B	12
13	EXAM/FITTING S212	1000		1	20	A	-	-			-	14
15	PATIENT LIFT CHARGING S212	500		1	20	B	-	-			SHUNT TRIP	16
17	REPAIR STORAGE C201	400		1	20	C	30	1	[30A2]	1980	DUST COLLECTOR C201	18
19	DRILL PRESS C201	1650		1	20	A	20	1		500	PATIENT LIFT CHARGING SW201	20
21	SEWING MACHINE C201	1100		1	20	B	20	1		932	TRAUTMAN PEL C201	22
23	ULTRASOUND SW201	1000		1	20	C	20	1			SPARE	24
25	ULTRASOUND SW201	1100		1	20	A	20	1			SPARE	26
27	WAITING S207	600		1	20	B	20	1			SPARE	28
29	REFRIGERATOR S205	1100	G	1	20	C	20	1			SPARE	30
31	MICROWAVE S205	1500		1	20	A	20	1			SPARE	32
33	COUNTER TOP RECEPT. S205	200		1	20	B	20	1			SPARE	34
35	CONF/BREAK S205A	800		1	20	C	20	1			SPARE	36
37	CONF/BREAK S205A	600		1	20	A					SPACE ONLY	38
39	PT NURSE CALL CONTROL PANEL	300		1	20	B					SPACE ONLY	40
41	EF-2.1	670		1	20	C					SPACE ONLY	42
REMARKS:												

REMARKS:  
G = PROVIDE GFI TYPE CIRCUIT BREAKER.  
S = PROVIDE SHUNT TRIP TYPE CIRCUIT BREAKER.  
[ ] = CIRCUIT SIZE.

**PARTIAL ONE-LINE POWER RISER DIAGRAM KEYNOTES**

- 1 PROVIDE 125 AMP, 3-POLE CIRCUIT BREAKER IN EXISTING G.E. A-SERIES PANEL.



**1 PARTIAL ONE-LINE POWER RISER DIAGRAM**  
NOT TO SCALE

Revisions

Date

© 2000 Calvin L. Hinz Architects P.C.

These plans are specifically designed for construction by Calvin L. Hinz Architects and are intended for no other purposes. Permission for use of this document in part or whole without written consent of Calvin L. Hinz Architects is prohibited.

IMPORTANT CONTRACTOR'S NOTE

1. ALL CONTRACTORS ARE RESPONSIBLE FOR REVIEWING ENTIRE SET OF DOCUMENTS TO DETERMINE THEIR FULL SCOPE OF WORK. CONTRACTOR SHALL NOT BE ALLOWED EXTRA COSTS DUE TO FAILURE TO REVIEW ENTIRE SET OF DOCUMENTS.

2. ANY USE OF THESE ELECTRONIC DRAWINGS OR SCALING OF THE PRINTED DOCUMENTS ARE DONE SO AT THE CONTRACTORS RISK.

CLH Calvin L. Hinz Architects

Calvin L. Hinz Architects, P.C.  
3705 North 200th Street  
Elkhorn, Nebraska 68022  
Phone: 402.291.6941 Fax: 402.291.9193

KRS

11620 ARBOR STREET SUITE 100  
OMAHA, NEBRASKA 68144  
PHONE: 402.932.0100  
FAX: 402.932.1001  
www.krsengineering.com  
KRS # 121014  
COPYRIGHT 2012  
This document and the information contained may not be reproduced without the express written permission of KRS Engineering, LLC. Unauthorized copying, disclosure or construction use are prohibited by the copyright law.

Drawing Title

- ELECTRICAL SCHEDULES AND DETAILS

Approved Project Director

KEVIN HUTSELL

Project Title

RENOVATE BACKFILL DENTAL SPACE  
NWIHCS

Location

VAMC Grand Island, NE

Date

APRIL 13, 2012

Checked

JAZ

Drawn

GJH

Project Number

636-12-101

Building Number

ONE

Drawing Number

E3.1

Dwg. 25 of 26

Office of Construction and Facilities Management

Department of Veterans Affairs

VA FORM 08-6231