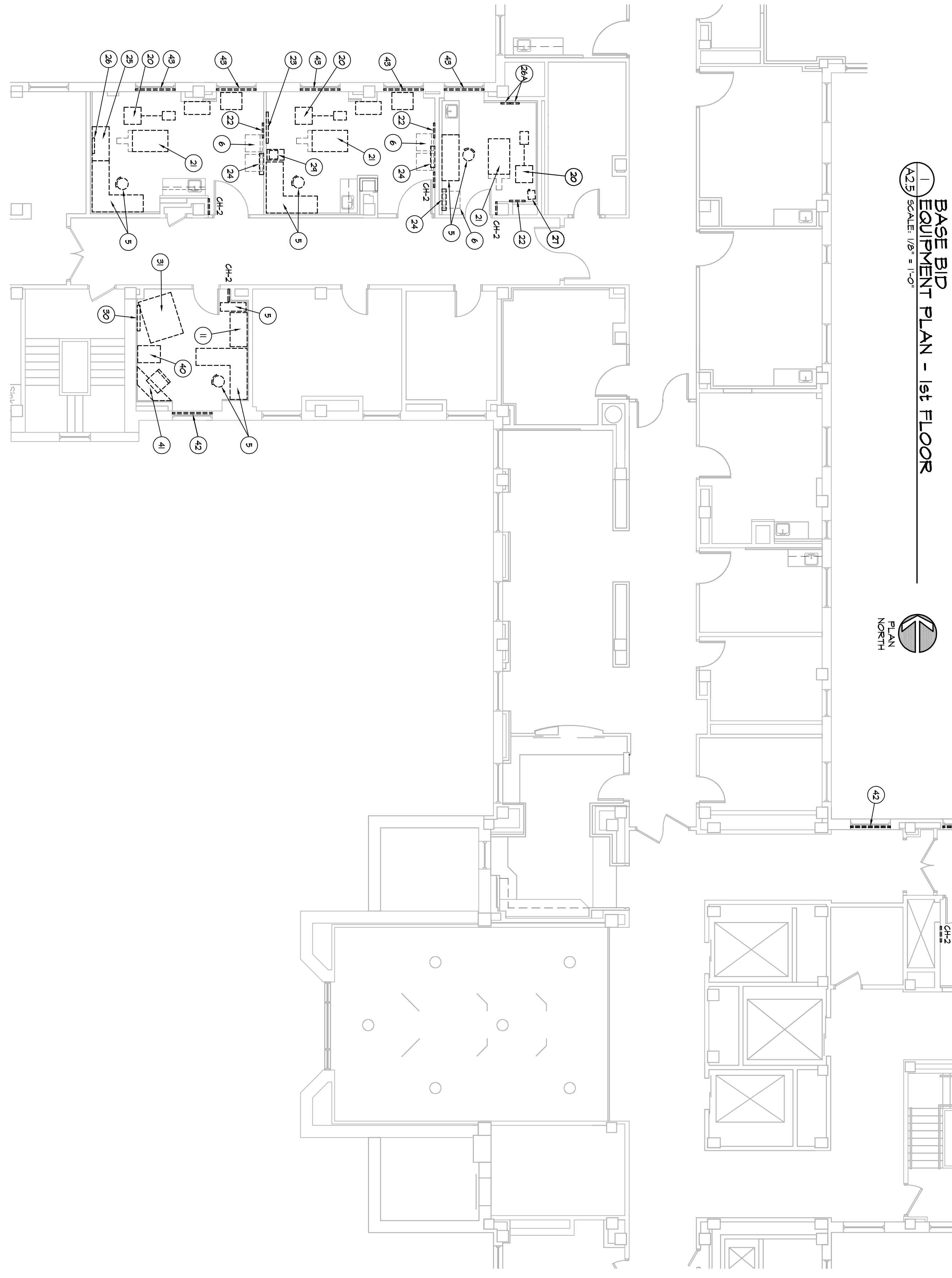


Architectural floor plan of the 1st floor of the Base Building. The plan shows a large central hall with several rooms and corridors. Key features include:

- Rooms and Corridors:** CH-2, CH-3, CH-4, and a central hall area.
- Structural Elements:** Walls, doors, and windows are indicated by lines and symbols.
- Labels:** Various letters (A, B, C, D, E, F, G, H, I, J, K, L, M, N, O, P, Q, R, S, T, U, V, W, X, Y, Z) are placed throughout the plan, likely corresponding to specific structural or construction details.
- North Arrow:** A north arrow is located in the bottom right corner, pointing towards the top right.

**Office of
Construction
and Facilities
Management**

 Department of
Veterans Affairs



3
A2.5

ALTERNATE NO. 1
EQUIPMENT PLAN - 2nd FLOOR

SCALE: 1/8" = 1'-0"

ARCHITECT/ENGINEERS:

Calvin L. Hinz Architects, P.C.
3705 North 200th Street
Elkhorn, Nebraska 68022
Phone: 402.291.6941 Fax: 402.291.9193

KRS ENGINEERING
11620 ARBOR STREET SUITE 100
OMAHA, NEBRASKA 68144
PHONE: 402, 932, 0100
FAX: 402, 932, 1001
www.krsengineering.com

Copyright 2011
This document and the information
reproduced without the express
permission of KRS Engineering, LLC. Unauthorized
construction use are prohibited.

CONSTRUCTION DOCUMENT (CD-3) SUBMITTAL (100%)
April 29, 2010

TRAIN

 Department of
Mathematics, Affiliated