

A

B

C

D

E

F

A

B

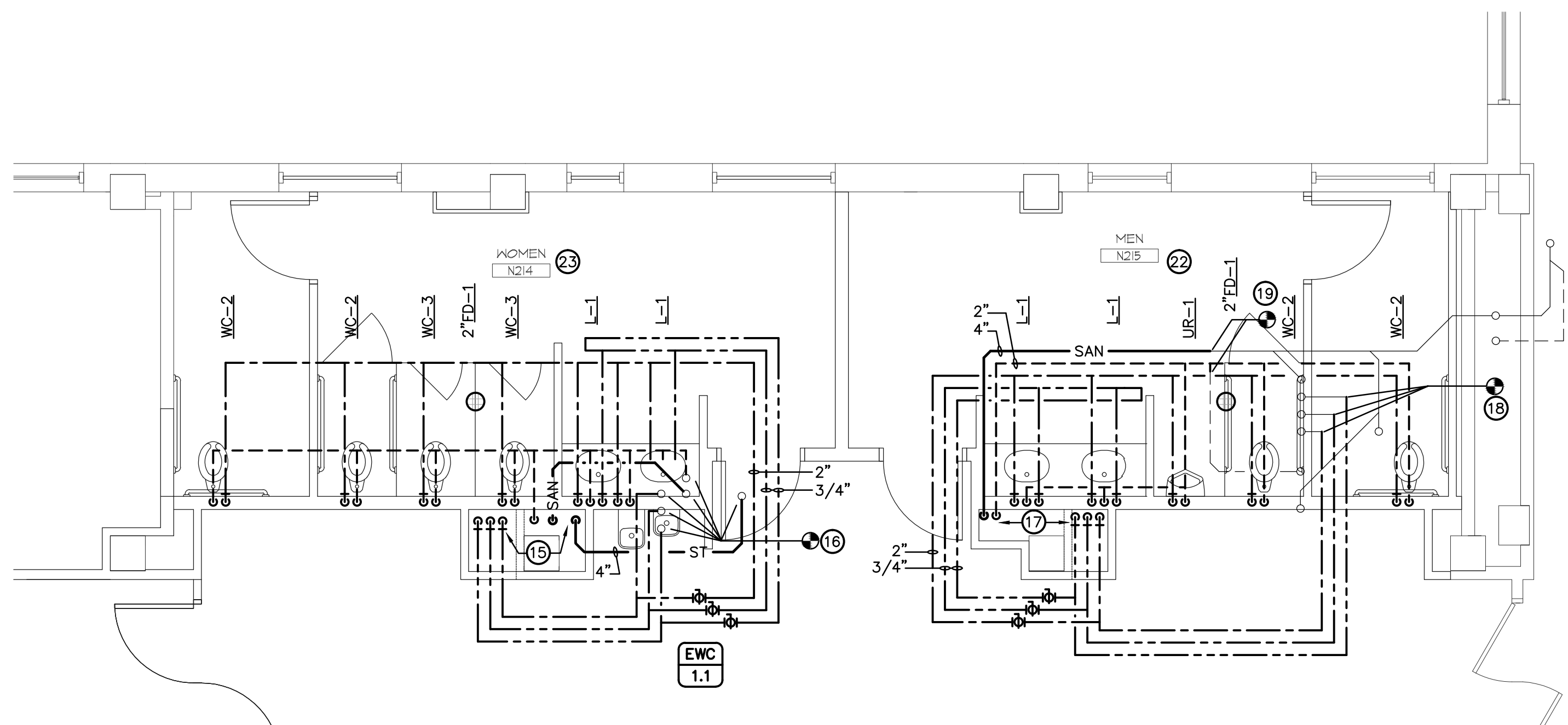
C

D

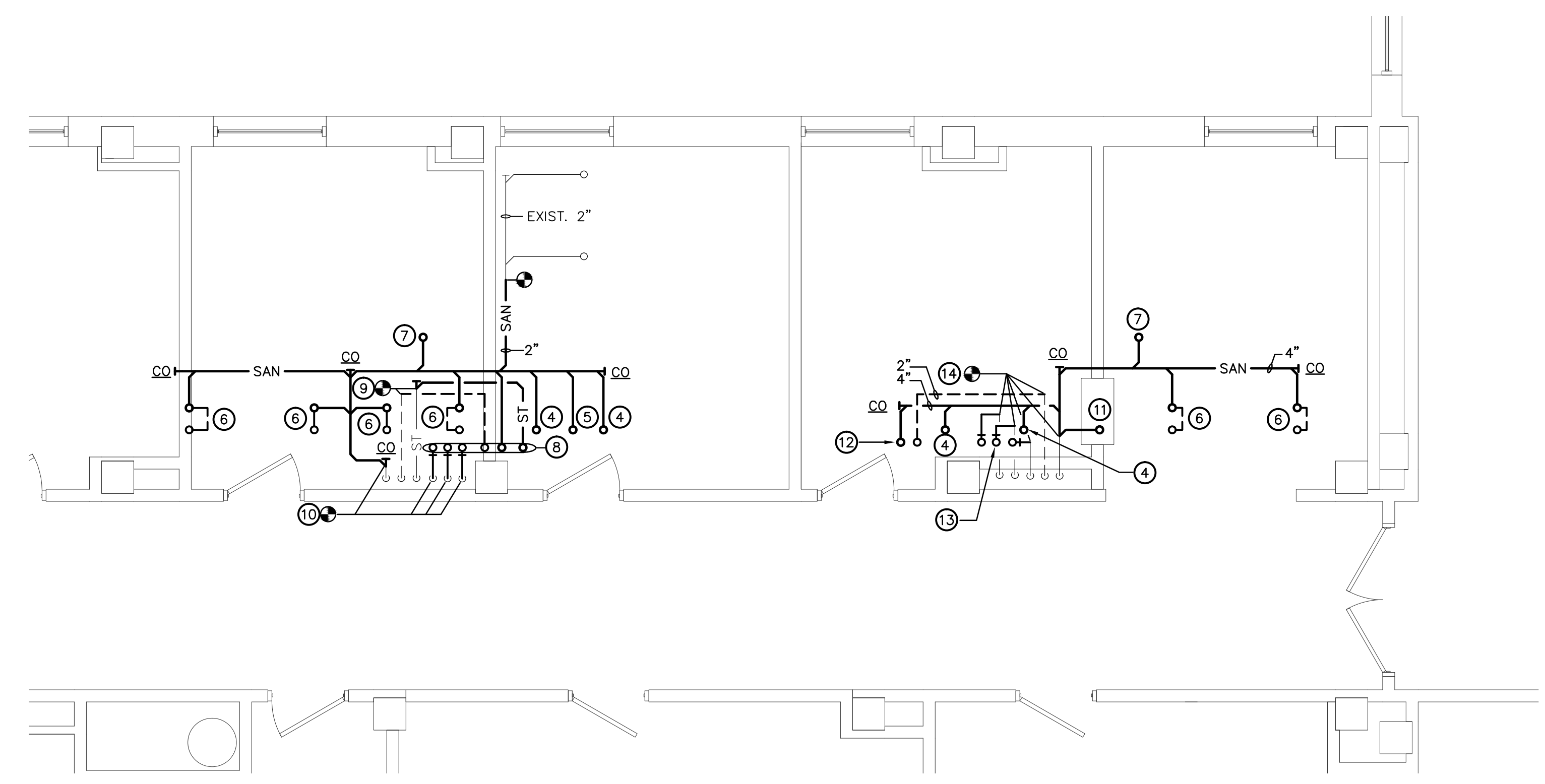
E

F

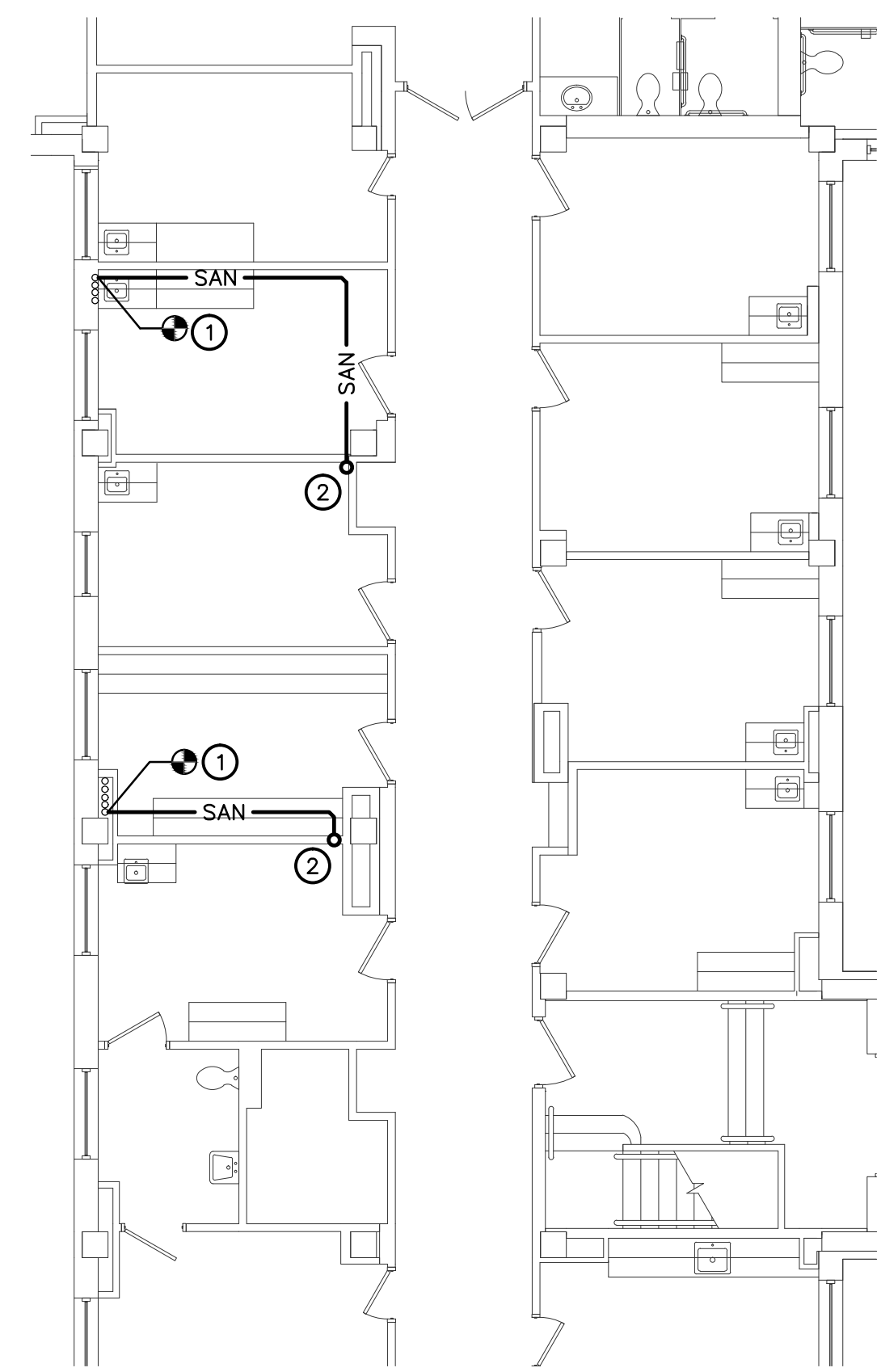
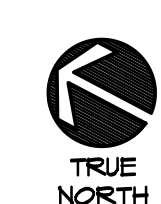
three inches = one foot
one and one half inches = one foot
one inch = one foot
three quarters inch = one foot
one half inch = one foot
three eighths inch = one foot
one quarter inch = one foot
one eighth inch = one foot



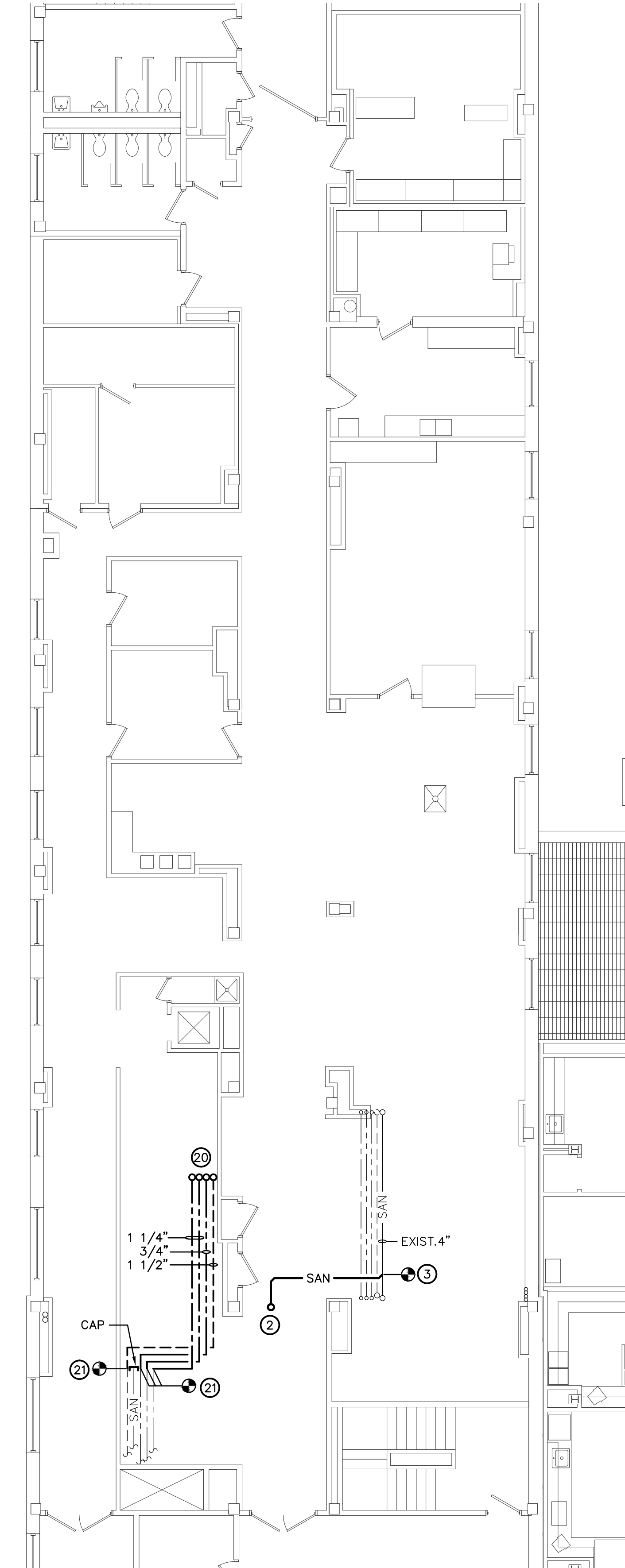
ALTERNATE NO. 2
PLUMBING PLAN - 2nd FLOOR
PI.3 SCALE: 1/4" = 1'-0"



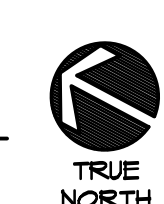
ALTERNATE NO. 2
PLUMBING PLAN - 1st FLOOR
PI.3 SCALE: 1/4" = 1'-0"



ALTERNATE NO. 1
PLUMBING PLAN - 1st FLOOR
PI.3 SCALE: 1/8" = 1'-0"



ALTERNATE NO. 1
PLUMBING PLAN - 1st FLOOR
PI.3 SCALE: 1/8" = 1'-0"



GENERAL NOTES

- EXISTING CONDITIONS ABOVE CEILINGS AND WITHIN VERTICAL CHASES ARE NOT FULLY KNOWN. FIELD VERIFY ACTUAL CONDITIONS AND ADJUST WORK AS REQUIRED. NOTIFY ENGINEER AND ARCHITECT IF EXISTING PIPING, DUCTWORK, OR EQUIPMENT TO REMAIN CONFLICTS WITH THE NEW DESIGN.
- DURING CONSTRUCTION NO CEILING TILES IN PUBLIC AREAS CAN BE LEFT OPEN OVERNIGHT.
- COORDINATE SCHEDULING OF ALL WORK REQUIRED OUTSIDE THE RENOVATION AREA INCLUDING FLOORS ABOVE AND BELOW THE RENOVATION AREA WITH COITR. SPACES ADJACENT TO THE RENOVATION WILL REMAIN OPERATIONAL DURING CONSTRUCTION.

PLUMBING KEYNOTES

- CONNECT NEW 2" SANITARY TO EXISTING 4" SANITARY STACK. FIELD VERIFY EXACT LOCATION PRIOR TO INSTALLATION.
- 2" SANITARY UP TO SINK.
- CONNECT NEW 2" SANITARY TO EXISTING 4" SANITARY.
- 2" SANITARY UP TO LAVATORY.
- 2" SANITARY UP TO ELECTRIC WATER COOLER.
- 4" SANITARY & 2" VENT UP AT WATER CLOSET.
- 2" SANITARY UP TO FLOOR DRAIN.
- 4" STORM, 4" SANITARY, 2 1/2" VENT, 2" CW, 1 1/4" HW, AND 3/4" HWC UP.
- CONNECT NEW 4" STORM AND 2" VENT TO EXISTING 4" STORM AND 2" VENT.
- CONNECT NEW 4" SANITARY, 2" CW, 1 1/4" HW, AND 3/4" HWC TO EXISTING 4" SANITARY, 2" CW, 1 1/4" HW, AND 3/4" HWC.
- 2" SANITARY UP TO URINAL.
- 4" SANITARY AND 2" VENT UP.
- 2" CW, 1" HW, AND 3/4" HWC UP.
- CONNECT NEW 4" SANITARY, 2" VENT, 2" CW, 1" HW, AND 3/4" HWC TO EXISTING 4" SANITARY, 2" VENT, 2" CW, 1" HW, AND 3/4" HWC.
- 4" STORM, 4" SANITARY, 2 1/2" VENT, 2" CW, 1 1/4" HW, AND 3/4" HWC DOWN.
- CONNECT NEW 4" STORM, 4" SANITARY, 2 1/2" VENT, 1 1/2" CW, 1" HW, AND 3/4" HWC TO EXISTING 4" STORM, 4" SANITARY, 2 1/2" VENT, 1 1/2" CW, 1" HW, AND 3/4" HWC.
- 4" SANITARY, 4" VENT, 2" CW, 1" HW, AND 3/4" HWC DOWN.
- CONNECT NEW 1 1/2" CW, 1" HW, AND 3/4" HWC TO EXISTING 1 1/2" CW, 1" HW, AND 3/4" HWC.
- CONNECT NEW 4" SANITARY AND 2" VENT TO EXISTING 4" SANITARY AND 2" VENT.
- 1 1/4" CW, 1 1/4" HW, 3/4" HWC, AND 1 1/2" VENT UP. SEE SHEET P1.2 FOR CONTINUATION.
- CONNECT NEW 1 1/4" CW, 1 1/4" HW, 3/4" HWC, AND 1 1/2" VENT TO EXISTING 1 1/4" CW, 1 1/4" HW, 3/4" HWC, AND 1 1/2" VENT.
- SEE WASTE & VENT RISER DIAGRAM #1 AND DOMESTIC WATER RISER DIAGRAM #2 ON SHEET P2.1.
- SEE WASTE & VENT RISER DIAGRAM #3 AND DOMESTIC WATER RISER DIAGRAM #4 ON SHEET P2.1.

Revisions		© 2000 Calvin L. Hinz Architects P.C. These plans are specifically designed for construction by Calvin L. Hinz Architects and are intended for no other purposes. Permission for use of this document in part or whole without written consent of Calvin L. Hinz Architects is prohibited.		IMPORTANT CONTRACTOR'S NOTE 1. ALL CONTRACTORS ARE RESPONSIBLE FOR REVIEWING ENTIRE SET OF DOCUMENTS TO DETERMINE THEIR FULL SCOPE OF WORK. CONTRACTOR SHALL NOT BE ALLOWED EXTRA COSTS DUE TO FAILURE TO REVIEW ENTIRE SET OF DOCUMENTS. 2. ANY USE OF THESE ELECTRONIC DRAWINGS OR SCALING OF THE PRINTED DOCUMENTS ARE DONE SO AT THE CONTRACTORS RISK.				ARCHITECT/ENGINEERS: Calvin L. Hinz Architects, P.C. 3705 North 200th Street Elkhorn, Nebraska 68022 Phone: 402.291.6941 Fax: 402.291.9193 11620 ARBOR STREET SUITE 100 OMAHA, NEBRASKA 68144 PHONE: 402.932.0100 FAX: 402.932.1001 www.krsengineering.com KRS # 121013 COPYRIGHT 2012 This document and the information contained may not be reproduced without the express written permission of KRS Engineering, LLC. Unauthorized copying, disclosure or construction use are prohibited by the copyright law.		Drawing Title - ALT. #1 PLUMBING PLAN - 1st FLOOR - ALT. #2 PLUMBING PLAN - 1st FLOOR - ALT. #2 PLUMBING PLAN - 2nd FLOOR Approved Project Director KEVIN HUTSELL CONSTRUCTION DOCUMENT (CD-3) SUBMITTAL 100% APRIL 13, 2012		Project Title RENOVATE BACKFILL CANTEN SPACE NWHCS Location VAMC Grand Island, NE Date APRIL 13, 2012 Checked MKL Drawn CER		Project Number 636-12-103 Building Number ONE Drawing Number P1.3 Dwg. 19 of 40		Office of Construction and Facilities Management 	
------------------	--	---	--	---	--	--	--	---	--	--	--	---	--	---	--	---	--