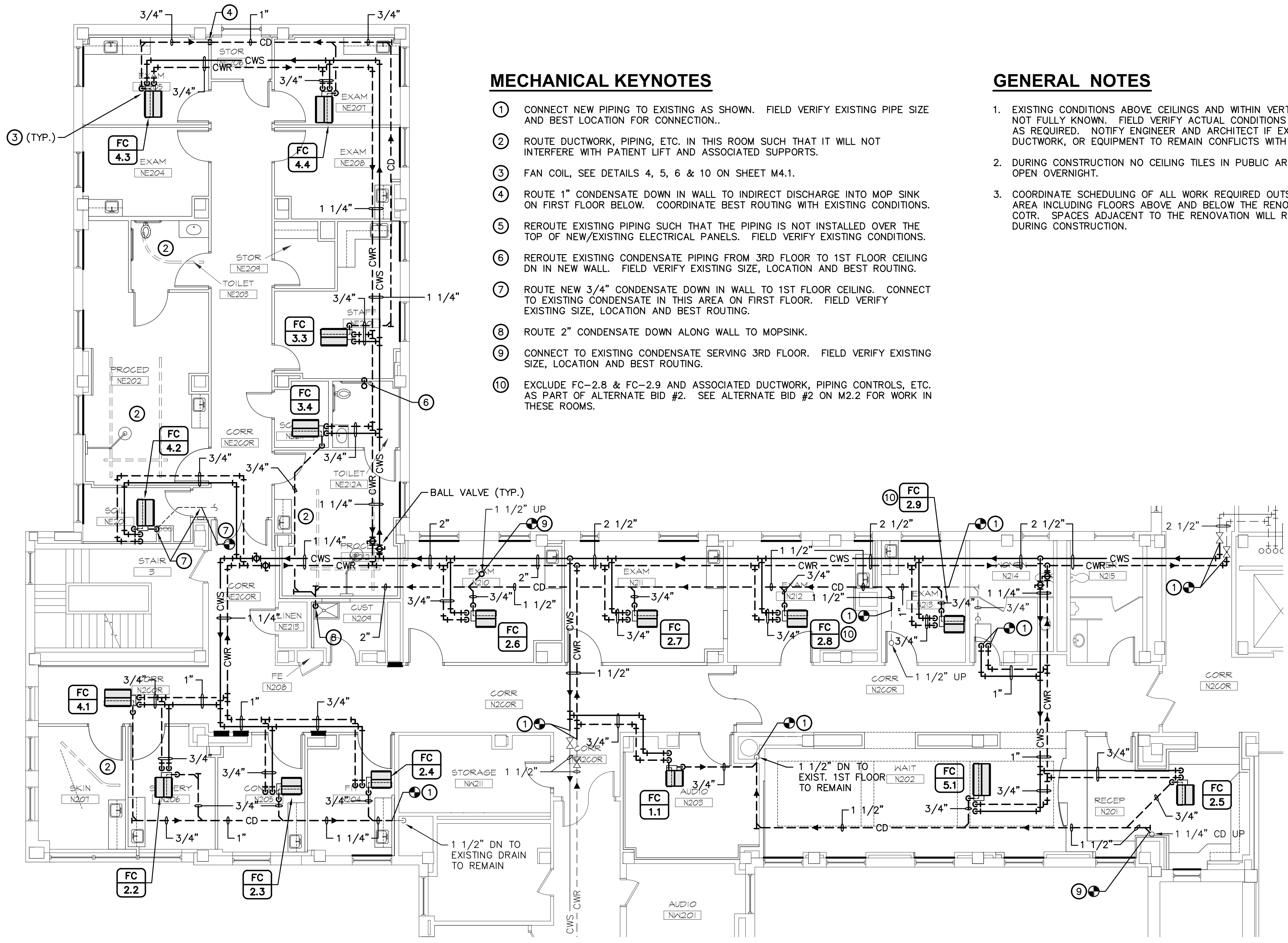


BASE BID  
HVAC PIPING PLAN - 1st FLOOR  
SCALE: 1/8" = 1'-0"



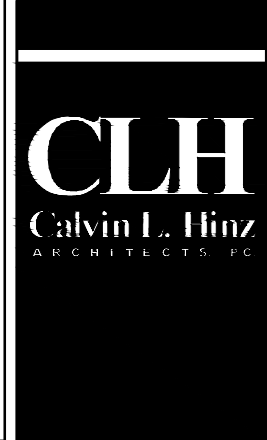
BASE BID  
2 HVAC PIPING PLAN - 2nd FLOOR  
M2.1 SCALE: 1/8" = 1'-0"

[illegible]

© 2000 Calvin L. Hinz Architects P.C.  
These plans are specifically designed for construction by Calvin L. Hinz Architects and are intended for no other purposes. Permission for use of this document in part or whole without written consent of Calvin L. Hinz Architects is prohibited.

IMPORTANT  
CONTRACTOR'S NOTE

1. ALL CONTRACTORS ARE RESPONSIBLE FOR REVIEWING ENTIRE SET OF DOCUMENTS TO DETERMINE THEIR FULL SCOPE OF WORK. CONTRACTOR SHALL NOT BE ALLOWED EXTRA COSTS DUE TO FAILURE TO REVIEW ENTIRE SET OF DOCUMENTS.
2. ANY USE OF THESE ELECTRONIC DRAWINGS OR SCALING OF THE PRINTED DOCUMENTS ARE DONE SO AT THE CONTRACTORS RISK.



**Calvin L. Hinz Architects, P.C.**  
3705 North 200th Street  
Elkhorn, Nebraska 68022  
Phone: 402.291.6941 Fax: 402.291.9193



11620 ARBOR STREET SUITE 100  
OMAHA, NEBRASKA 68144  
PHONE: 402.932.0100  
FAX: 402.932.1001  
[www.ksengineering.com](http://www.ksengineering.com)

COPYRIGHT 2012 121  
This document and the information contained may not be reproduced without the express written permission of Engineering, LLC. Unauthorized copying, disclosure or construction use are prohibited by the copyright law.

	<b>Drawing Title</b>
--	----------------------

- BASE BID HVAC PIPING PLAN - 1st FLOOR
- BASE BID HVAC PIPING PLAN - 2nd FLOOR

**Approved: Project Director**  
KEVIN HUTSELL

CONSTRUCTION DOCUMENT (CD-3) SUBMITTAL 100%  
APRIL 13, 2012

	<b>Project Title</b>
--	----------------------

RENOVATE BACKFILL CANTEEN  
SPACE NWIHCS

Location	VAMC Grand Island, NE
----------	-----------------------

Date	APRIL 13, 2012
------	----------------

Checked
MKL

Drawn	SFP
-------	-----

Project Number	636-12-103
----------------	------------

Building Number  
ONE

Drawing Number  
MO

M2.1

Dwg. 28 of 40

Office of  
Construction  
and Facilities  
Management

