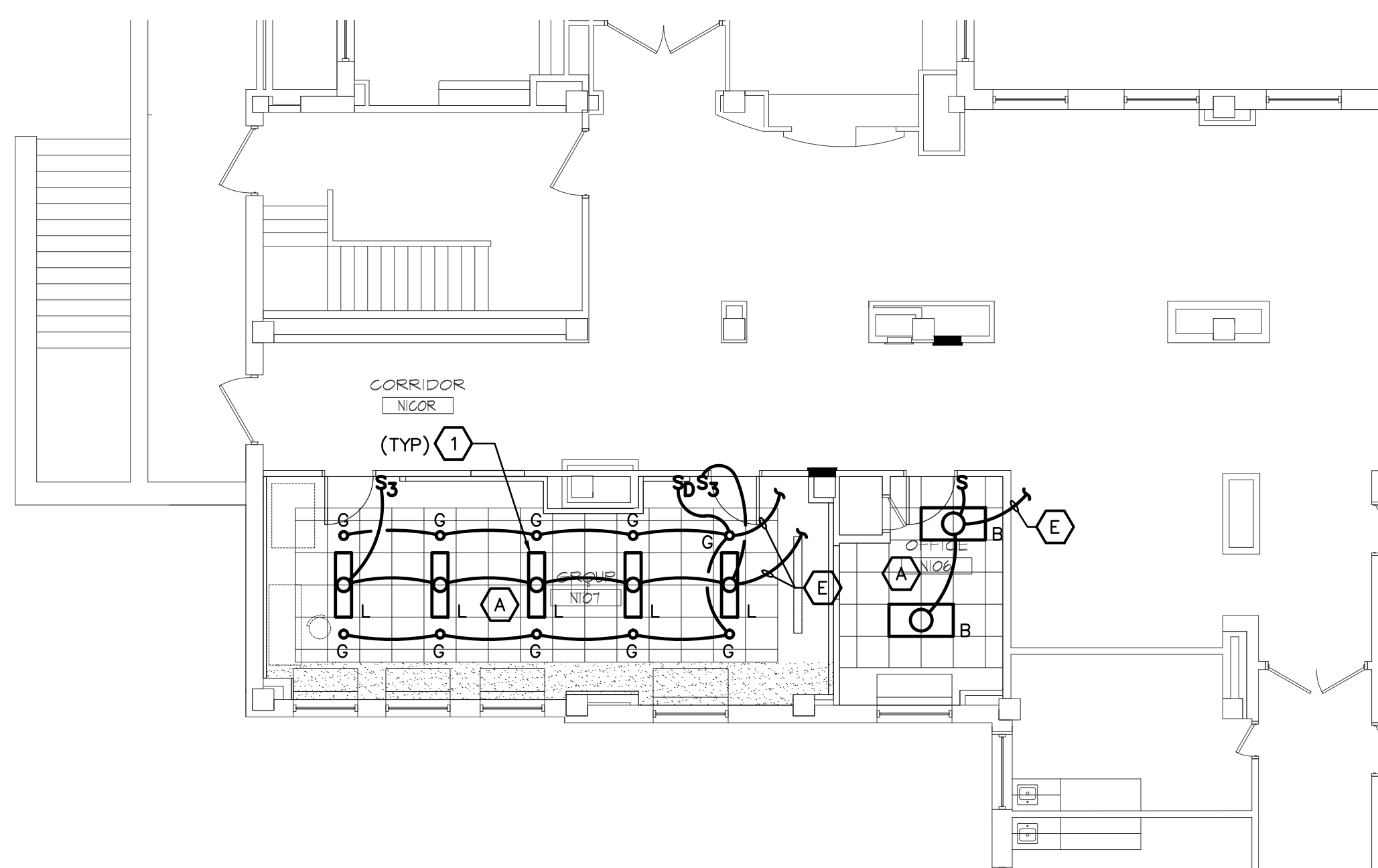
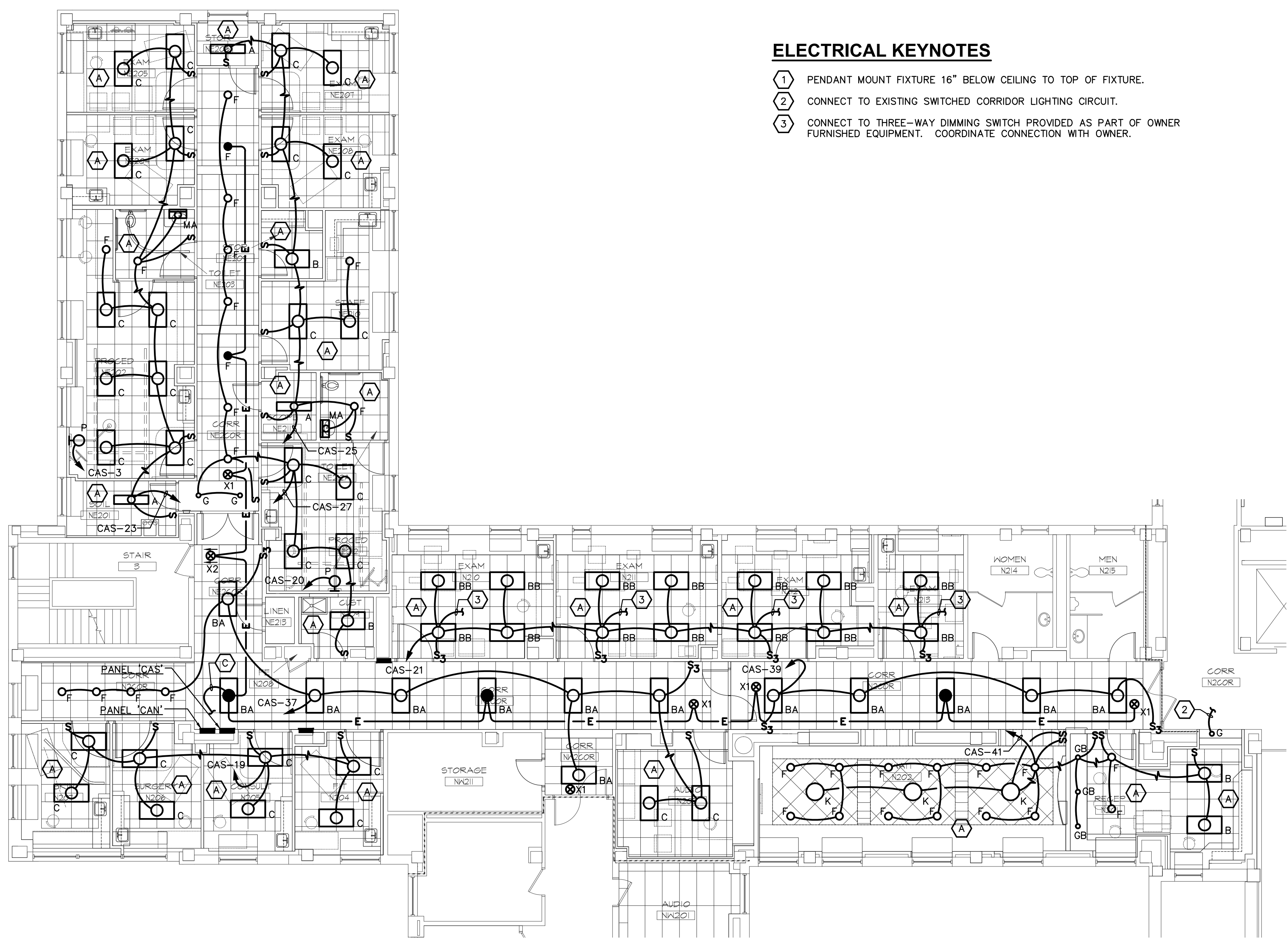


one eighth inch = one foot
one quarter inch = one foot
three eighths inch = one foot
one half inch = one foot
three quarters inch = one foot
one inch = one foot
one and one half inches = one foot
two inches = one foot
three inches = one foot
four inches = one foot
five inches = one foot
six inches = one foot
seven inches = one foot
eight inches = one foot
nine inches = one foot
ten inches = one foot
eleven inches = one foot
twelve inches = one foot
thirteen inches = one foot
fourteen inches = one foot
fifteen inches = one foot
sixteen inches = one foot
seventeen inches = one foot
eighteen inches = one foot
nineteen inches = one foot
twenty inches = one foot
twenty one inches = one foot
twenty two inches = one foot
twenty three inches = one foot
twenty four inches = one foot
twenty five inches = one foot
twenty six inches = one foot
twenty seven inches = one foot
twenty eight inches = one foot
twenty nine inches = one foot
thirty inches = one foot
thirty one inches = one foot
thirty two inches = one foot
thirty three inches = one foot
thirty four inches = one foot
thirty five inches = one foot
thirty six inches = one foot
thirty seven inches = one foot
thirty eight inches = one foot
thirty nine inches = one foot
forty inches = one foot
forty one inches = one foot
forty two inches = one foot
forty three inches = one foot
forty four inches = one foot
forty five inches = one foot
forty six inches = one foot
forty seven inches = one foot
forty eight inches = one foot
forty nine inches = one foot
fifty inches = one foot
fifty one inches = one foot
fifty two inches = one foot
fifty three inches = one foot
fifty four inches = one foot
fifty five inches = one foot
fifty six inches = one foot
fifty seven inches = one foot
fifty eight inches = one foot
fifty nine inches = one foot
sixty inches = one foot
sixty one inches = one foot
sixty two inches = one foot
sixty three inches = one foot
sixty four inches = one foot
sixty five inches = one foot
sixty six inches = one foot
sixty seven inches = one foot
sixty eight inches = one foot
sixty nine inches = one foot
seventy inches = one foot
seventy one inches = one foot
seventy two inches = one foot
seventy three inches = one foot
seventy four inches = one foot
seventy five inches = one foot
seventy six inches = one foot
seventy seven inches = one foot
seventy eight inches = one foot
seventy nine inches = one foot
eighty inches = one foot
eighty one inches = one foot
eighty two inches = one foot
eighty three inches = one foot
eighty four inches = one foot
eighty five inches = one foot
eighty six inches = one foot
eighty seven inches = one foot
eighty eight inches = one foot
eighty nine inches = one foot
ninety inches = one foot
ninety one inches = one foot
ninety two inches = one foot
ninety three inches = one foot
ninety four inches = one foot
ninety five inches = one foot
ninety six inches = one foot
ninety seven inches = one foot
ninety eight inches = one foot
ninety nine inches = one foot
one hundred inches = one foot



BASE BID
LIGHTING PLAN - 1st FLOOR
SCALE: 1/8" = 1'-0"
TRUE NORTH



BASE BID
LIGHTING PLAN - 2nd FLOOR
SCALE: 1/8" = 1'-0"
TRUE NORTH

- ELECTRICAL KEYNOTES**
- 1 PENDANT MOUNT FIXTURE 16" BELOW CEILING TO TOP OF FIXTURE.
 - 2 CONNECT TO EXISTING SWITCHED CORRIDOR LIGHTING CIRCUIT.
 - 3 CONNECT TO THREE-WAY DIMMING SWITCH PROVIDED AS PART OF OWNER FURNISHED EQUIPMENT. COORDINATE CONNECTION WITH OWNER.

Revisions	Date	© 2000 Calvin L. Hinz Architects P.C. These plans are specifically designed for construction by Calvin L. Hinz Architects and are intended for no other purposes. Permission for use of this document in part or whole without written consent of Calvin L. Hinz Architects is prohibited.	IMPORTANT CONTRACTOR'S NOTE 1. ALL CONTRACTORS ARE RESPONSIBLE FOR REVIEWING ENTIRE SET OF DOCUMENTS TO DETERMINE THEIR FULL SCOPE OF WORK. CONTRACTOR SHALL NOT BE ALLOWED EXTRA COSTS DUE TO FAILURE TO REVIEW ENTIRE SET OF DOCUMENTS. 2. ANY USE OF THESE ELECTRONIC DRAWINGS OR SCALING OF THE PRINTED DOCUMENTS ARE DONE SO AT THE CONTRACTOR'S RISK.	CLH Calvin L. Hinz ARCHITECTS 3705 North 200th Street Elkhorn, Nebraska 68022 Phone: 402.291.6941 Fax: 402.291.9193	KRS KENNETH J. MORGAN REGISTERED ELECTRICAL ENGINEER STATE OF NEBRASKA 121013 COPYRIGHT 2012 This document and the information contained may not be reproduced without the express written permission of KRS Engineering, LLC. Unauthorized copying, disclosure or construction use are prohibited by the copyright law.	ARCHITECT/ENGINEERS: Drawing Title - BASE BID LIGHTING PLAN - 1st FLOOR - BASE BID LIGHTING PLAN - 2nd FLOOR Approved: Project Director KEVIN HUTSELL	CONSTRUCTION DOCUMENT (CD-3) SUBMITTAL 100% APRIL 13, 2012	Project Title RENOVATE BACKFILL CANTEN SPACE NWIHCs Location VAMC Grand Island, NE Date APRIL 13, 2012 Checked KJM Drawn GJH	Project Number 636-12-103 Building Number ONE Drawing Number E11 Dwg. 36 of 40	Office of Construction and Facilities Management Department of Veterans Affairs
-----------	------	---	--	---	---	---	---	--	--	--