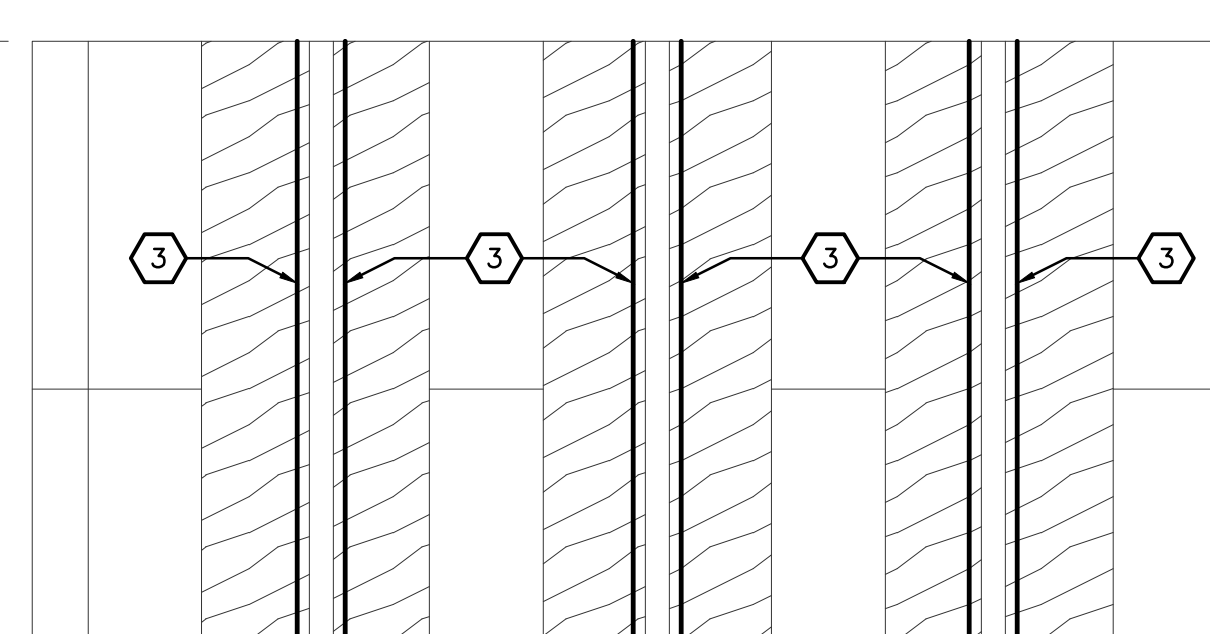

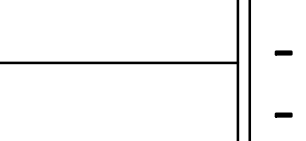

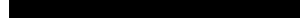


- ELECTRICAL KEYNOTES**
- 1 PROVIDE MODALIGHT SUPERFLEX, 3K, FLEXIBLE LED STRIP IN COVE. SEE ARCHITECTURAL DETAILS FOR EXACT LOCATION. PROVIDE POWER SUPPLIES, CONNECTORS, ETC. AS REQUIRED FOR COMPLETE SYSTEM. LOCATE POWER SUPPLIES IN ADJACENT ACCESSIBLE CEILING SPACE. SUPPORT/INSTALL STRIP PER MANUFACTURERS RECOMMENDATIONS.
 - 2 SEE LIGHTING STRIP DETAIL THIS SHEET.
 - 3 PROVIDE MODALIGHT SUPERFLEX, 3K, FLEXIBLE LED STRIP IN LIGHT SLOT. SEE ARCHITECTURAL DETAILS FOR EXACT LOCATION. STRIP SHALL EXTEND FULL LENGTH OF SLOT AS SHOWN. PROVIDE POWER SUPPLIES, CONNECTORS, ETC. AS REQUIRED FOR COMPLETE SYSTEM. LOCATE POWER SUPPLIES IN ADJACENT ACCESSIBLE CEILING SPACE. SUPPORT/INSTALL STRIP PER MANUFACTURERS RECOMMENDATIONS. LED DRIVER(S) SHALL BE DIMMABLE AND CONTROLLED FROM SWITCH INDICATED. SEE DRAWINGS FOR CIRCUITING.
 - 4 CONNECT TO THREE-WAY DIMMING SWITCH PROVIDED AS PART OF OWNER FURNISHED EQUIPMENT. COORDINATE CONNECTION WITH OWNER.



ALTERNATE NO. 2
2 LIGHTING PLAN - 2nd FLOOR
E1.2 SCALE: 1/8" = 1'-0"

ALTERNATE NO. 1
1 LIGHTING PLAN - 2nd FLOOR
E1.2 SCALE: 1/8" = 1'-0"

		<p>© 2000 Calvin L. Hinz Architects P.C.</p> <p>These plans are specifically designed for construction by Calvin L. Hinz Architects and are intended for no other purposes. Permission for use of this document in part or whole without written consent of Calvin L. Hinz Architects is prohibited.</p>		<p>IMPORTANT CONTRACTOR'S NOTE</p> <p>1. ALL CONTRACTORS ARE RESPONSIBLE FOR REVIEWING ENTIRE SET OF DOCUMENTS TO DETERMINE THEIR FULL SCOPE OF WORK. CONTRACTOR SHALL NOT BE ALLOWED EXTRA COSTS DUE TO FAILURE TO REVIEW ENTIRE SET OF DOCUMENTS.</p> <p>2. ANY USE OF THESE ELECTRONIC DRAWINGS OR SCALING OF THE PRINTED DOCUMENTS ARE DONE SO AT THE CONTRACTORS RISK.</p>				 <p>Calvin L. Hinz Architects, P.C. 3705 North 200th Street Elkhorn, Nebraska 68022 Phone: 402.291.6941 Fax: 402.291.9193</p>		 <p>11620 ARBOR STREET SUITE 100 OMAHA, NEBRASKA 68144 PHONE: 402.932.0100 FAX: 402.932.1001 www.krsengineering.com</p> <p>COPYRIGHT 2012 This document and the information contained may not be reproduced without the express written permission of KRS Engineering, LLC. Unauthorized copying, disclosure or construction use are prohibited by the copyright law.</p>		<p>Drawing Title</p> <p>- ALT #1 LIGHTING PLAN - 2nd FLOOR</p> <p>- ALT #2 LIGHTING PLAN - 2nd FLOOR</p> <p>Approved Project Director</p> <p>KEVIN HUTSELL</p>			<p>CONSTRUCTION DOCUMENT (CD-3) SUBMITTAL 100%</p> <p>APRIL 13, 2012</p>			<p>Project Title</p> <p>RENOVATE BACKFILL CANTEN SPACE NWIHCs</p> <p>Location</p> <p>VAMC Grand Island, NE</p> <p>Date</p> <p>APRIL 13, 2012</p> <p>Checked</p> <p>KJM</p> <p>Drawn</p> <p>GJH</p>			<p>Project Number</p> <p>636-12-103</p> <p>Building Number</p> <p>ONE</p> <p>Drawing Number</p> <p>E1.2</p> <p>Dwg. 37 of 40</p>		<p>Office of Construction and Facilities Management</p> 	
<p>Revisions</p>		<p>Date</p>																						