

A

B

C

D

E

F

G

three inches = one foot

one and one half inches = one foot

one inch = one foot

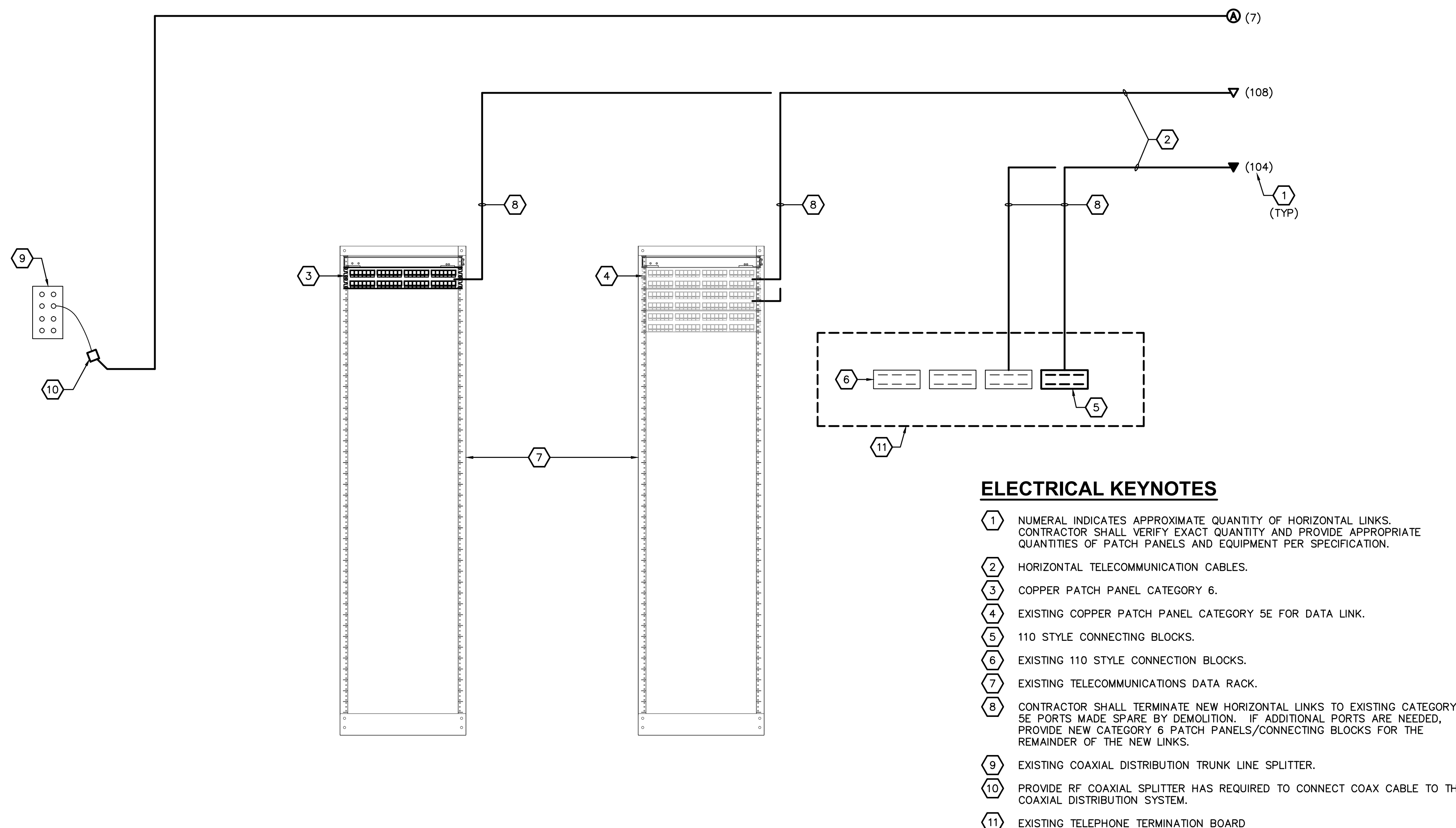
three quarters inch = one foot

one half inch = one foot

three eighths inch = one foot

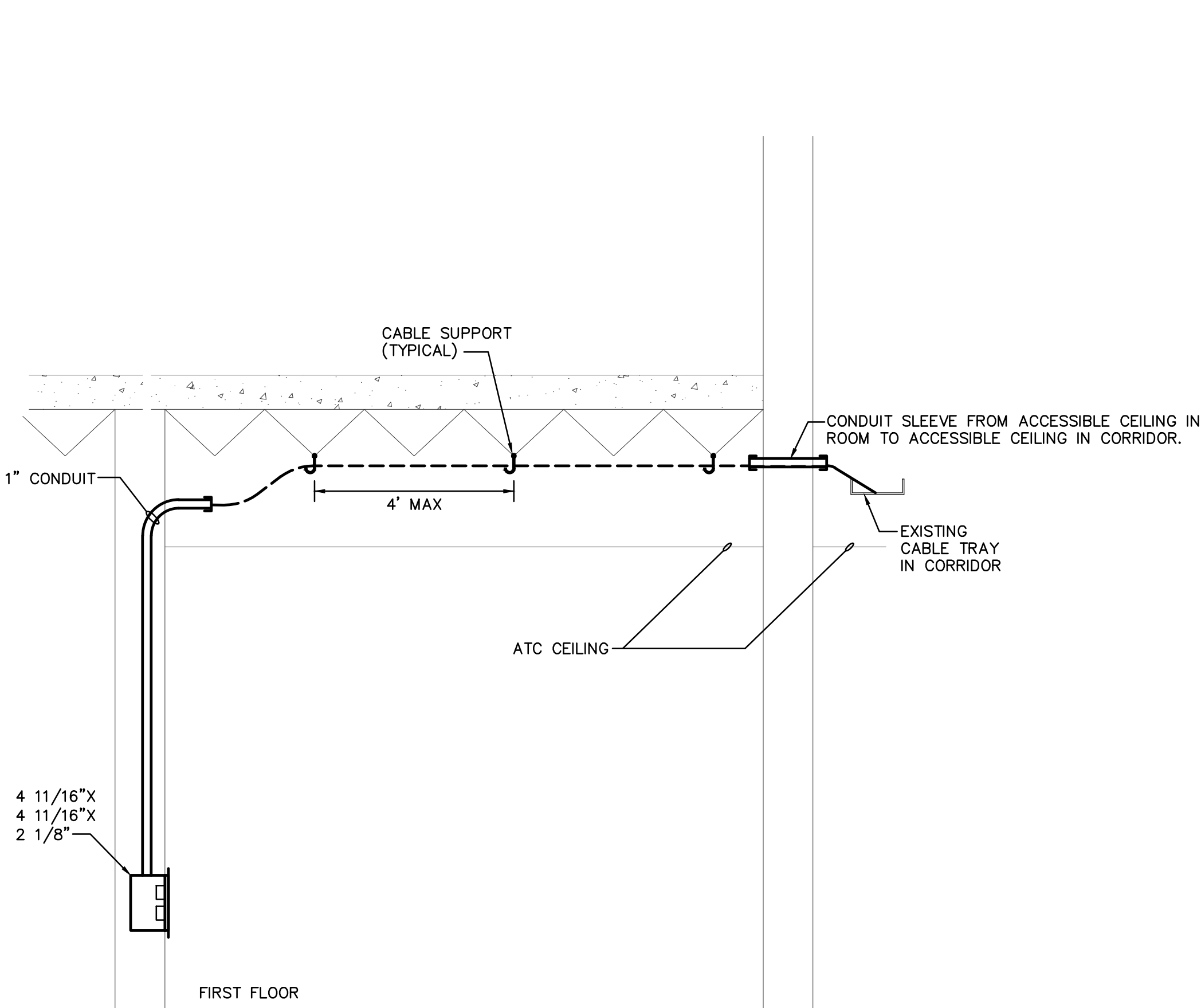
one quarter inch = one foot

one eighth inch = one foot

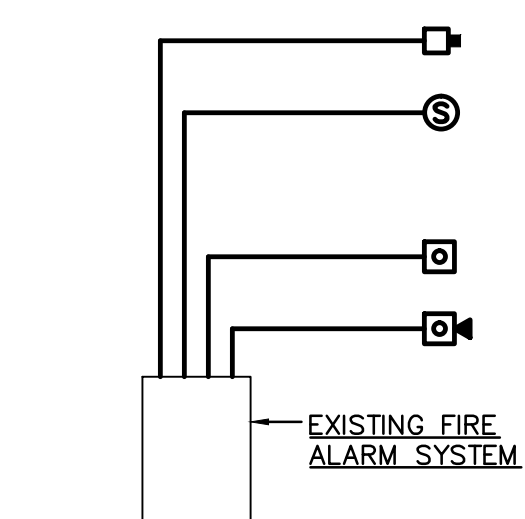


- ELECTRICAL KEYNOTES**
- 1 NUMERAL INDICATES APPROXIMATE QUANTITY OF HORIZONTAL LINKS. CONTRACTOR SHALL VERIFY EXACT QUANTITY AND PROVIDE APPROPRIATE QUANTITIES OF PATCH PANELS AND EQUIPMENT PER SPECIFICATION.
 - 2 HORIZONTAL TELECOMMUNICATION CABLES.
 - 3 COPPER PATCH PANEL CATEGORY 6.
 - 4 EXISTING COPPER PATCH PANEL CATEGORY 5E FOR DATA LINK.
 - 5 110 STYLE CONNECTING BLOCKS.
 - 6 EXISTING 110 STYLE CONNECTION BLOCKS.
 - 7 EXISTING TELECOMMUNICATIONS DATA RACK.
 - 8 CONTRACTOR SHALL TERMINATE NEW HORIZONTAL LINKS TO EXISTING CATEGORY 5E PORTS MADE SPARE BY DEMOLITION. IF ADDITIONAL PORTS ARE NEEDED, PROVIDE NEW CATEGORY 6 PATCH PANELS/CONNECTING BLOCKS FOR THE REMAINDER OF THE NEW LINKS.
 - 9 EXISTING COAXIAL DISTRIBUTION TRUNK LINE SPLITTER.
 - 10 PROVIDE RF COAXIAL SPLITTER HAS REQUIRED TO CONNECT COAX CABLE TO THE COAXIAL DISTRIBUTION SYSTEM.
 - 11 EXISTING TELEPHONE TERMINATION BOARD

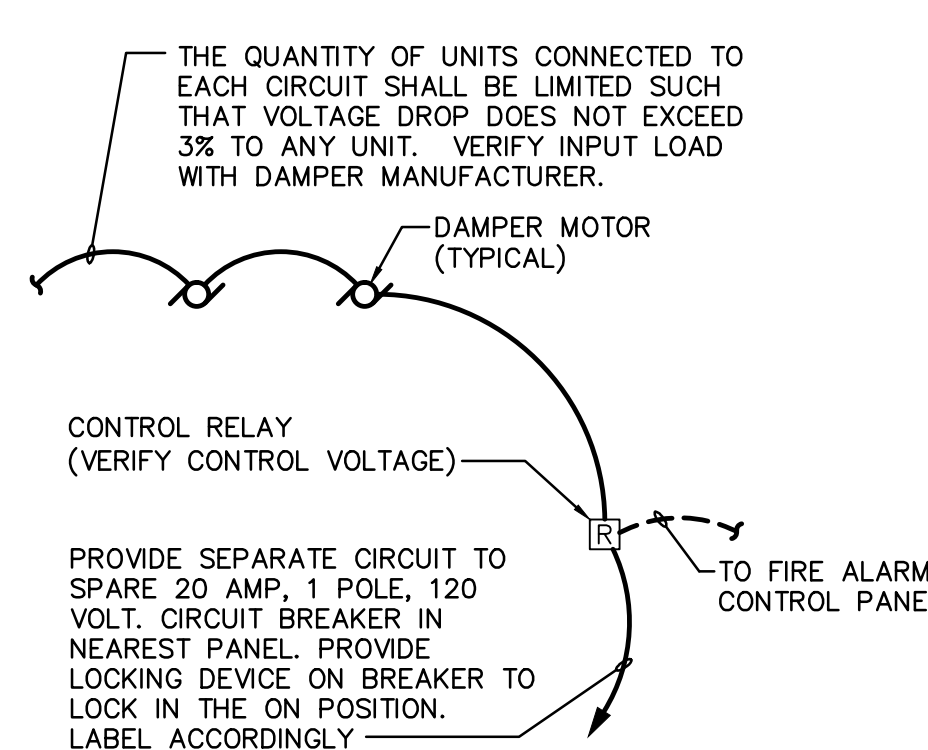
7 TELECOMMUNICATION CONNECTIVITY SCHEMATIC
NO SCALE



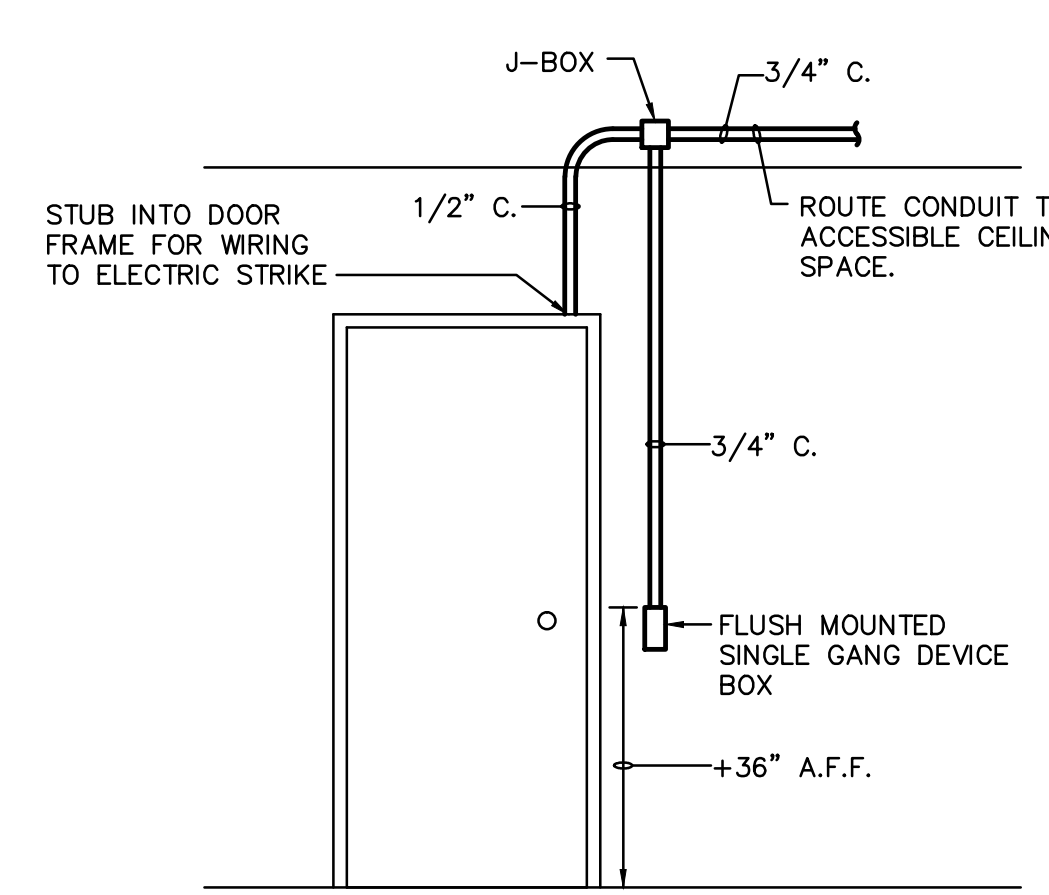
6 TELECOMMUNICATION HORIZONTAL PATHWAY SCHEMATIC
NO SCALE



4 FIRE ALARM SYSTEM
NOT TO SCALE



5 SMOKE DAMPER CONNECTION DETAIL
NOT TO SCALE



3 PROXIMITY READER - ROUGH IN
NOT TO SCALE

FIRE ALARM SYSTEM NOTES

FIRE ALARM SYSTEM SHALL CONSIST OF (BUT NOT LIMITED TO) THE FOLLOWING DEVICES.

- VISUAL, COMBINATION VISUAL/AUDIO SIGNAL – INTENSITY TO MEET ADA REQUIREMENTS
- SMOKE DETECTOR – PHOTOELECTRIC TYPE

CONTRACTOR SHALL MODIFY THE EXISTING FIRE ALARM SYSTEM TO ACCOMMODATE NEW DEVICES SHOWN.

CONTRACTOR SHALL PROVIDE ALL REQUIRED ACCESSORIES, ETC. FOR A COMPLETE AND OPERATING SYSTEM.

NEW DEVICES SHALL BE PROVIDED TO MAINTAIN ALL EXISTING SYSTEM FEATURES. CONTRACTOR SHALL FULLY TEST THE SYSTEM. MODIFY EXISTING BATTERIES AS REQUIRED TO ACCOMMODATE NEW DEVICES.

CONNECT MAGNETIC DOOR HOLDERS TO FIRE ALARM SYSTEM

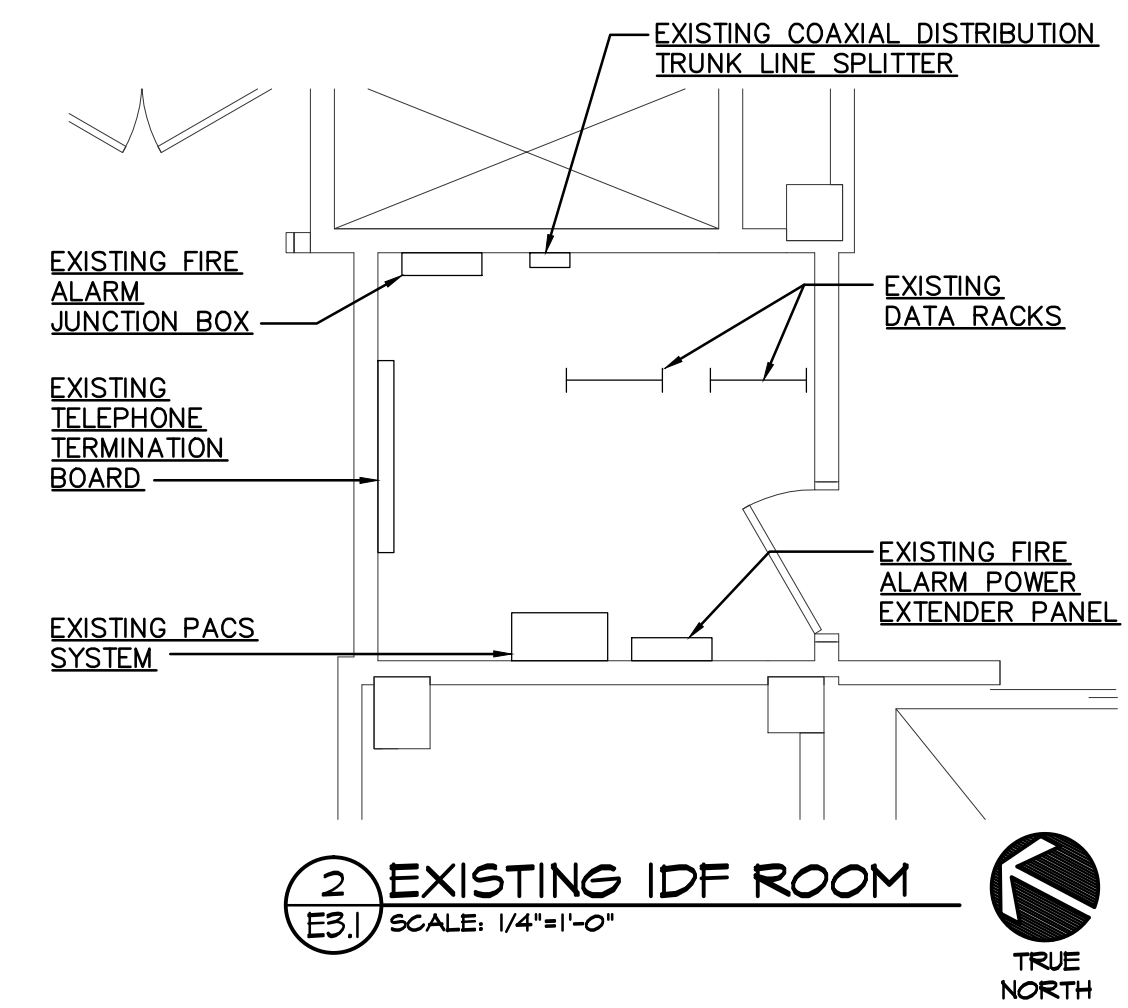
PROVIDE CABLE PER MANUFACTURERS REQUIREMENTS. ALL CABLING SHALL BE INSTALLED IN CONDUIT.

SUBMIT SHOP DRAWINGS FOR SYSTEM INCLUDING PRODUCT DATA, RISER DIAGRAMS, BATTERY CALCULATIONS AND LAYOUT DRAWINGS.

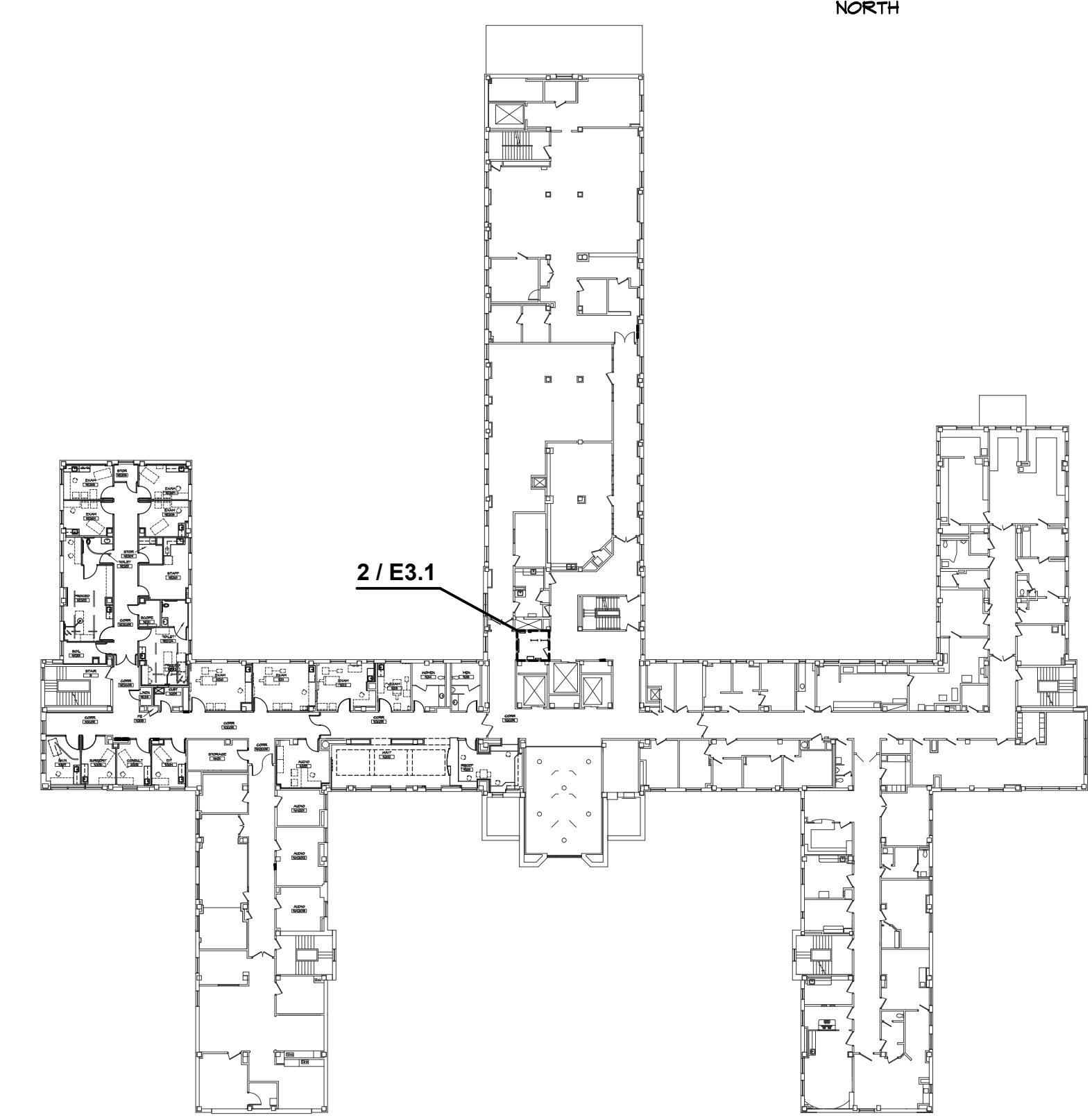
SYSTEM EQUIPMENT SHALL BE PROVIDED BY SIMPLEX – TO BE COMPATIBLE WITH THE EXISTING SIMPLEX 4120-8201 SYSTEM.

LUMINAIRE SCHEDULE				
MPS TYPE	FINISH	DESCRIPTION	REMARKS	ACCEPTABLE MANUFACTURERS
32/841 T-8	WHITE	4" SURFACE MOUNTED WRAP		REMARK 1
32/841 T-8	WHITE	2'X4" RECESSED GRID MOUNTED PRISMATIC TROFFER		REMARK 1
32/841 T-8	WHITE	2'X4" SURFACE MOUNT		REMARK 1
32/841 T-8	WHITE	2'X4" RECESSED GRID MOUNTED PRISMATIC TROFFER - DIMMING BALLAST	6	REMARK 1
32/841 T-8	WHITE	2'X4" RECESSED GRID MOUNTED PRISMATIC TROFFER		REMARK 1
32/841 T-8	WHITE	2'X4" RECESSED GRID MOUNTED PRISMATIC TROFFER - DIMMING BALLAST	7	REMARK 1
FTR32W	CLEAR ALZAK	6" RECESSED CAN LIGHT - FLUORESCENT		REMARK 4
LED	SEMI-SPECULAR	4" RECESSED CAN LIGHT - LED		REMARK 4
LED	SEMI-SPECULAR	4" RECESSED CAN LIGHT - LED - DIMMING BALLAST		REMARK 4
LED	WHITE	6" RECESSED CAN LIGHT - DROP LENS		REMARK 4
W TR141K	BRUSHED CHROME	SURFACE PENDANT		
32/841 T-8	CUSTOM COLOR	1'X4" PENDANT - INDIRECT	8	
28/841 T-5	WHITE	BARMOUNT WALL MOUNT UP/DOWN DISTRIBUTION	5	
14/841 T-5	WHITE	BARMOUNT WALL MOUNT UP/DOWN DISTRIBUTION	5	
17 WATT GU24 CF	SATIN NICKEL	SATIN NICKEL PENDANT		
50 W	WHITE	EXAM LIGHT		BERCHTOLD
LED	WHITE	EXIT LIGHT	3	REMARK 2
LED	WHITE	EXIT LIGHT	3	REMARK 2

- REMARKS:
- SEE SPECIFICATIONS 16511 FOR ADDITIONAL REQUIREMENTS FOR LUMINAIRES, LAMPS AND BALLASTS.
- COLUMBIA, DAY-BRITE, LITHONIA, LIGHTOLIER AND METALUX ARE ACCEPTABLE MANUFACTURERS FOR FIXTURE TYPE INDICATED.
 - LIGHTALARMS, CHLORIDE, DUAL-LITE, EMERGI-LITE, HUBBELL, INFINITY, LITHONIA, MCPHILBEN AND SURE-LITES ARE ACCEPTABLE MANUFACTURERS FOR FIXTURE TYPE INDICATED.
 - REFER TO DRAWINGS FOR MOUNTING REQUIREMENTS SUCH AS WALL MOUNT, END MOUNT, CEILING MOUNT AND PROVIDE FIXTURES ACCORDINGLY. PROVIDE DIRECTIONAL ARROWS AS SHOWN ON DRAWINGS.
 - GOTHAM, LIGHTOLIER, OMEGA, PORTFOLIO, PATHWAY CONVENTRY AND INFINITY WITH -YM OPTION ARE ACCEPTABLE MANUFACTURERS FOR FIXTURE TYPE INDICATED.
 - WALL MOUNT ABOVE MIRROR, SEE ARCHITECTURAL DRAWINGS.
 - PROVIDE DIMMING BALLAST COMPATIBLE WITH OWNER FURNISHED CONTROL SYSTEM. COORDINATE WITH OWNER.
 - PROVIDE WITH DIMMING DRIVER.
 - COORDINATE SUSPENSION CABLE LENGTH WITH ARCHITECT.



2 EXISTING IDF ROOM
E3.1 SCALE: 1/4\"/>



1 2ND FLOOR LOCATION PLAN
E3.1 SCALE: 1\"/>

Revisions

Date

© 2000 Calvin L. Hinz Architects P.C.

These plans are specifically designed for construction by Calvin L. Hinz Architects and are intended for no other purposes. Permission for use of this document in part or whole without written consent of Calvin L. Hinz Architects is prohibited.

IMPORTANT CONTRACTOR'S NOTE

1. ALL CONTRACTORS ARE RESPONSIBLE FOR REVIEWING ENTIRE SET OF DOCUMENTS TO DETERMINE THEIR FULL SCOPE OF WORK. CONTRACTOR SHALL NOT BE ALLOWED EXTRA COSTS DUE TO FAILURE TO REVIEW ENTIRE SET OF DOCUMENTS.

2. ANY USE OF THESE ELECTRONIC DRAWINGS OR SCALING OF THE PRINTED DOCUMENTS ARE DONE SO AT THE CONTRACTORS RISK.

CLH
Calvin L. Hinz
ARCHITECTS

Calvin L. Hinz Architects, P.C.
3705 North 200th Street
Elkhorn, Nebraska 68022
Phone: 402.291.6941 Fax: 402.291.9193

KRS
KENNETH R. SORGE
REGISTERED ELECTRICAL ENGINEER
STATE OF NEBRASKA

11620 ARBOR STREET SUITE 100
OMAHA, NEBRASKA 68144
PHONE: 402.932.0100
FAX: 402.932.1001
www.krsengineering.com

COPYRIGHT 2012
This document and the information contained may not be reproduced without the express written permission of KRS Engineering, LLC. Unauthorized copying, disclosure or construction use are prohibited by the copyright law.

Drawing Title
- ELECTRICAL SCHEDULES AND DETAILS

Approved Project Director
KEVIN HUTSELL

Project Title
RENOVATE BACKFILL CANTEN SPACE NWIHCs

Location
VAMC Grand Island, NE

Date
APRIL 13, 2012

Checked
KJM

Drawn
GJH

Project Number
636-12-103

Building Number
ONE

Drawing Number
E3.1

Dwg. 40 of 40

Office of Construction and Facilities Management

Department of Veterans Affairs