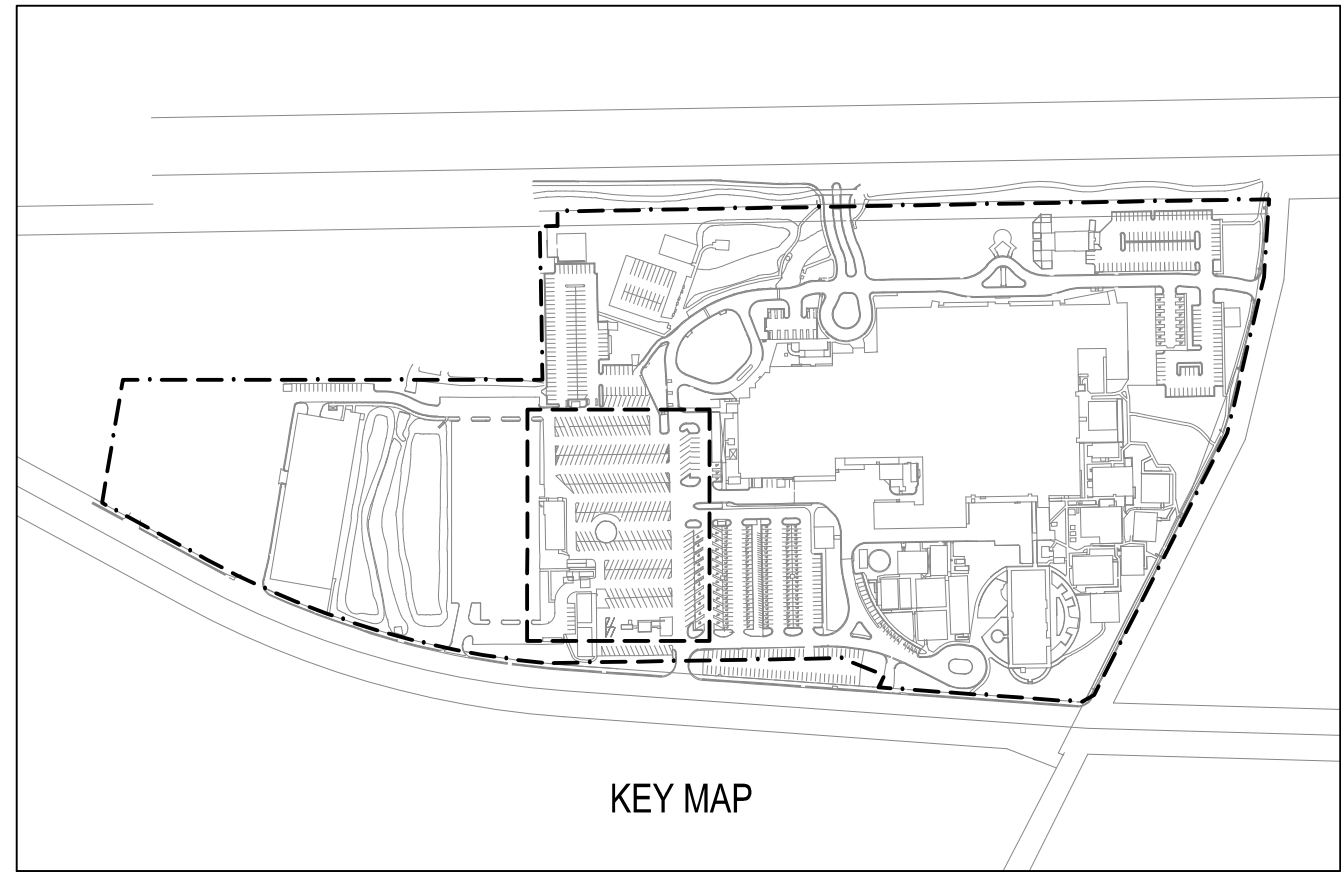
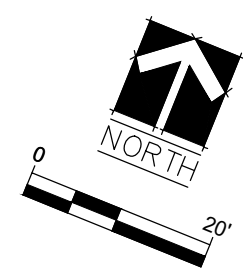
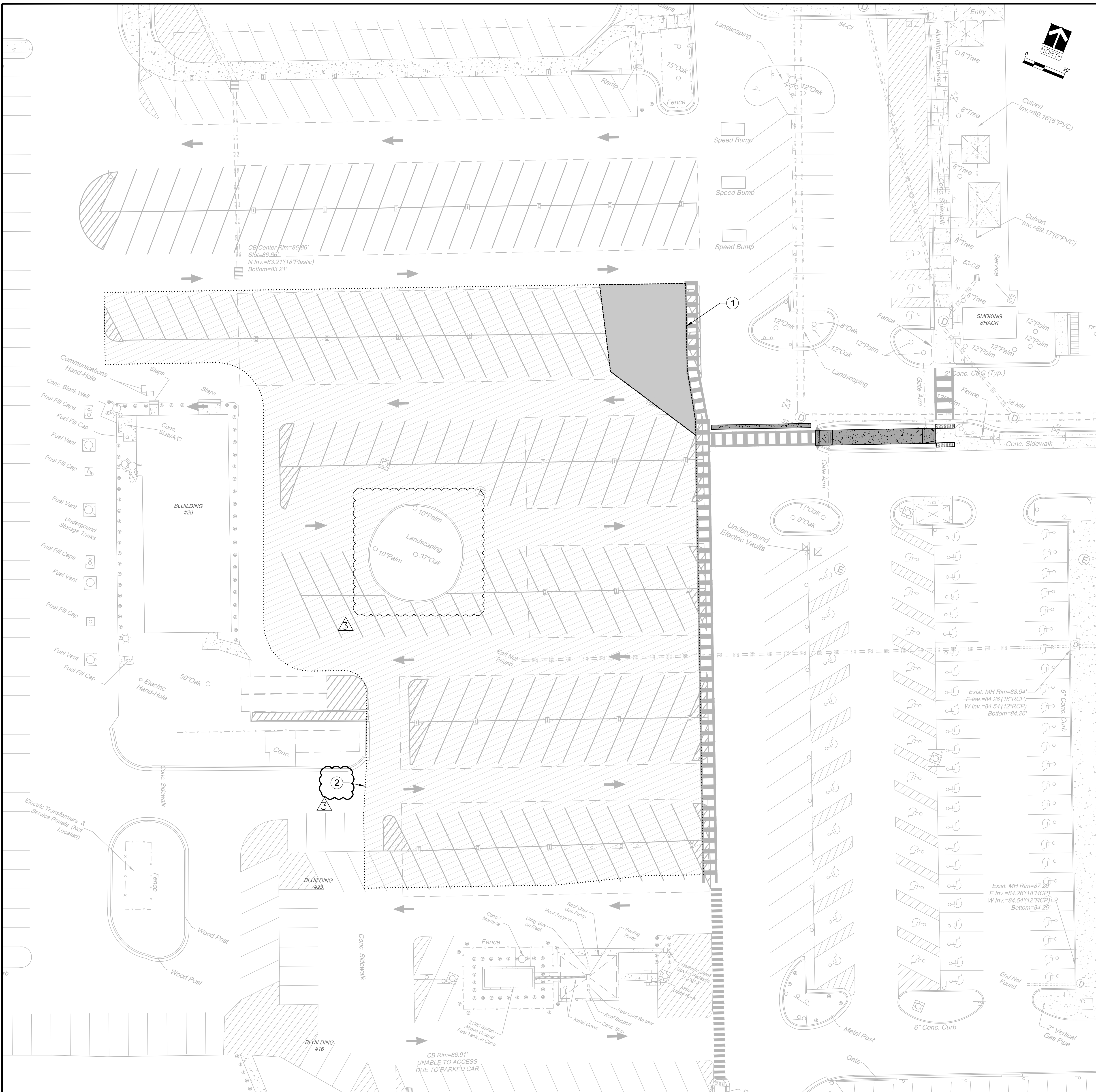


W:\1425-13 Malcom Randall VAMC ADA Construction Plans\1425-13 DWG6 CD.01-CD.09 DEMOLITION PLAN.dwg 3-17-17 08:56:29 AM jmueller



KEYED NOTES:

- 1 SAW CUT PAVEMENT AND LIMITS OF PAVEMENT REMOVAL
2 MILL ASPHALT TO 1" DEPTH (OMIT FOR BID DEDUCTION)

NOTES:

1. ASPHALT AREA INDICATED SHALL BE SEAL COATED BLACK TO REMOVE EXISTING STRIPING FOR BID DEDUCTION. SEE SHEET CI.03.

CONSTRUCTION QUANTITIES:

MILL 1" (OMIT MILLING FOR BID DEDUCTION)	50,117	SF
PAVEMENT REMOVAL	2,088	SF
SAWCUT PAVEMENT	202	LF

Number	Description	Date
1	REVISED 100% CONSTRUCTION DRAWINGS	6/15/2016
3	REVISED 100% CONSTRUCTION DRAWINGS	3/7/2017

MECHANICAL / ELECTRICAL ENGINEERS:

MES GROUP
MES GROUP
550 NORTH REO STREET, SUITE 203
TAMPA, FL 33609
PHONE: (813) 289-4700
FAX: (813) 289-1041
WWW. MESGROUPINC.COM

CIVIL ENGINEERS:

Sprinkle Consulting Engineers
18115 U.S. HWY. 41 NORTH SUITE 600
LUTZ, FL 33549
PHONE: (813) 949-7449 FAX: (813) 909-9840
WWW. SPRINKLECONSULTING.COM
BOARD OF ENGINEERS CERTIFICATE OF AUTHORIZATION #4548

J. DALLAS EVANS, P.E.
FLORIDA LICENSE # 72691

Drawing Title	Project Title	Project Number	Office of Construction and Facilities Management
AREA 1B - DEMOLITION PLAN	UPDATE SITE FOR COMPLIANCE WITH VA BARRIER FREE GUIDE	573-13-601	
Approved Project Director	Location	Building Number	
Project Status: REVISED 100% CONSTRUCTION DRAWINGS	GAINESVILLE, FL PROJECT #573-13-601	N/A	CD.02 Dwg. 10 of 50
	Date	Checked	
	06/15/2016		