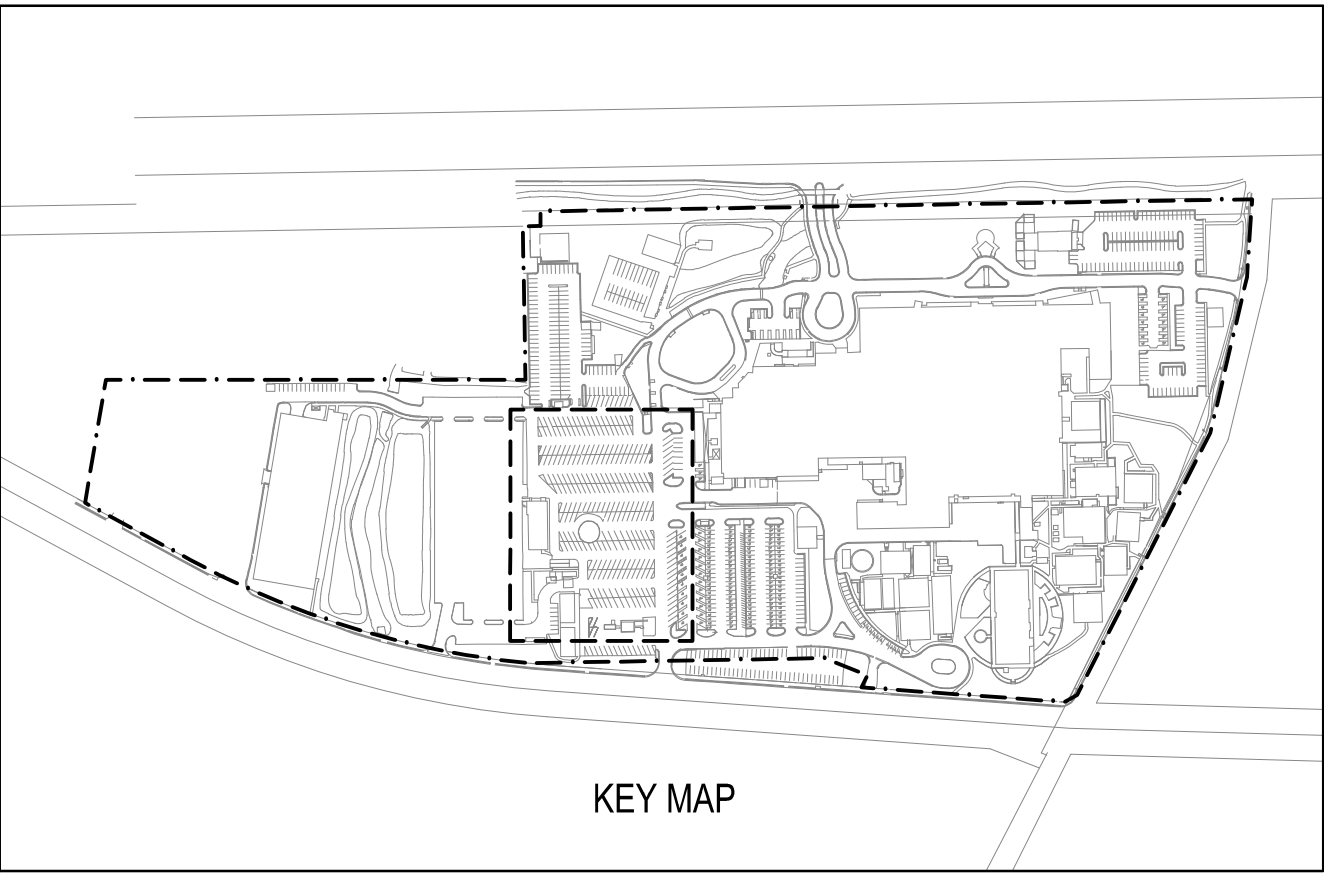
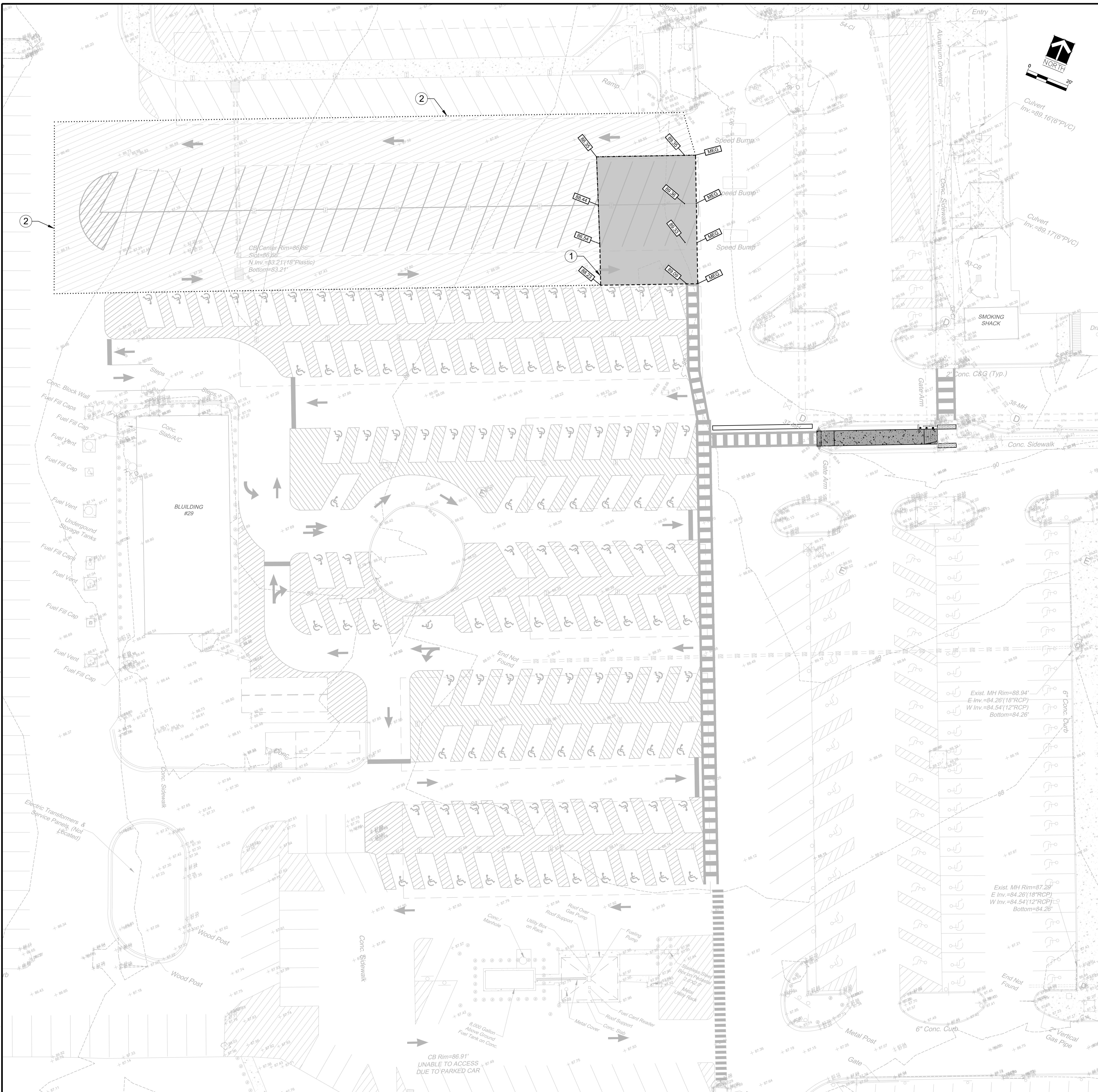


W:\1425-13 Malcom Randall VAMC ADA Construction Plans\1425-13 DWG8 CG.01-CG.08 PAVING GRADING DRAINAGE PLAN.dwg 3-17-17 11:35:49 AM jmueller



- KEYED NOTES:**
- 1 FULL DEPTH ASPHALT CONCRETE
  - 2 1" ASPHALT PAVEMENT (REPLACE WITH SEAL COAT FOR BID DEDUCTION)

**CONSTRUCTION QUANTITIES:**

FULL DEPTH ASPHALT PAVEMENT	2,712	SF
1" ASPHALT PAVEMENT (SEAL COAT FOR BID DEDUCTION)	21,018	SF

- LEGEND:**
- TYPE F CURB
  - TYPE D CURB
  - DETECTABLE WARNING MAT
  - ASPHALT CONCRETE PAVEMENT
  - PROPOSED CONTOUR

**NOTES:**

1. PROPOSED CONTOURS ARE SHOWN OUTSIDE OF AREA LIMITS TO ASSIST CONTRACTOR IN TIE-IN GRADES. GRADING OUTSIDE OF PROJECT AREA SHALL OCCUR DURING ITS SPECIFIED PHASE.

Number	Description	Date
1	REVISED 100% CONSTRUCTION DRAWINGS	6/15/2016
3	REVISED 100% CONSTRUCTION DRAWINGS	3/7/2017

**MECHANICAL / ELECTRICAL ENGINEERS:**

**MES GROUP**  
550 NORTH REO STREET, SUITE 203  
TAMPA, FL 33609  
PHONE: (813) 289-4700  
FAX: (813) 289-1041  
WWW. MESGROUPINC.COM

**CIVIL ENGINEERS:**

**Sprinkle CONSULTING**  
Planners + Engineers  
18115 U.S. HWY. 41 NORTH SUITE 600  
LUTZ, FL 33549  
PHONE: (813) 949-7449 FAX: (813) 909-9840  
WWW. SPRINKLECONSULTING.COM  
BOARD OF ENGINEERS CERTIFICATE OF AUTHORIZATION #4548

J. DALLAS EVANS, P.E.  
FLORIDA LICENSE # 72691

**Drawing Title**  
**AREA 1C - PAVING, GRADING & DRAINAGE PLAN**

**Approved Project Director**

**Project Status:** REVISED 100% CONSTRUCTION DRAWINGS

**Project Title**  
**UPDATE SITE FOR COMPLIANCE WITH VA BARRIER FREE GUIDE**

**Location**  
GAINESVILLE, FL  
PROJECT #573-13-601

**Date**  
06/15/2016

**Checked**

**Drawn**

**Project Number**  
573-13-601

**Building Number**  
N/A

**Drawing Number**  
**CG.03**  
Dwg. 16 of 50

**Office of Construction and Facilities Management**

**Department of Veterans Affairs**