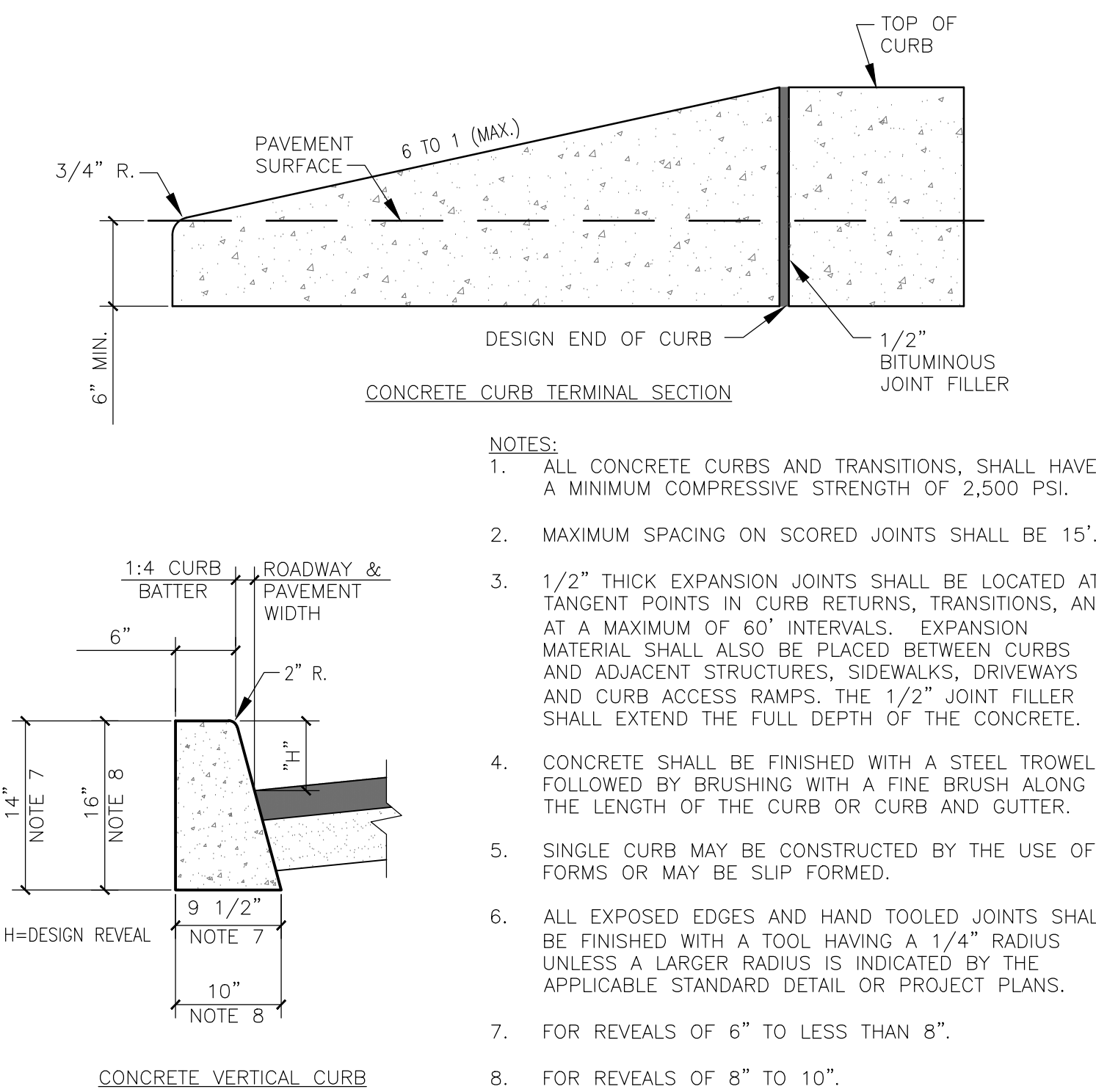
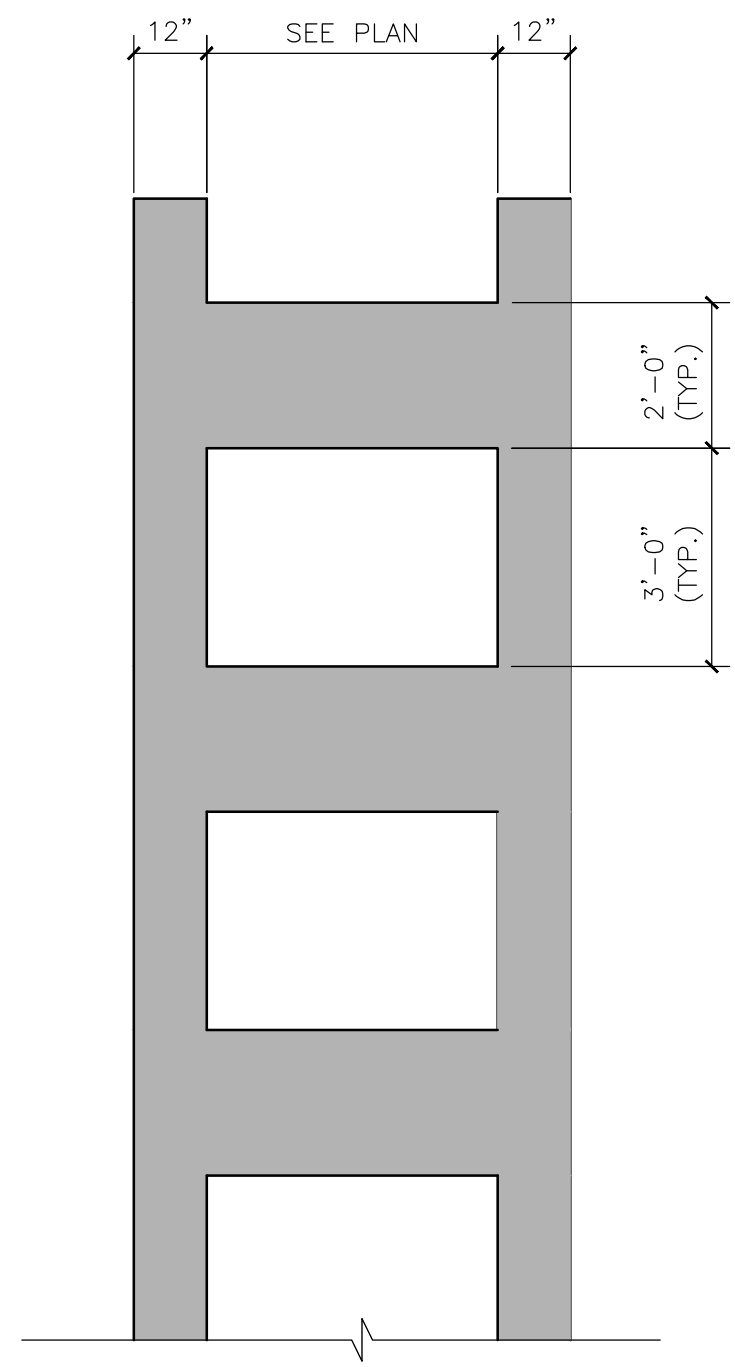


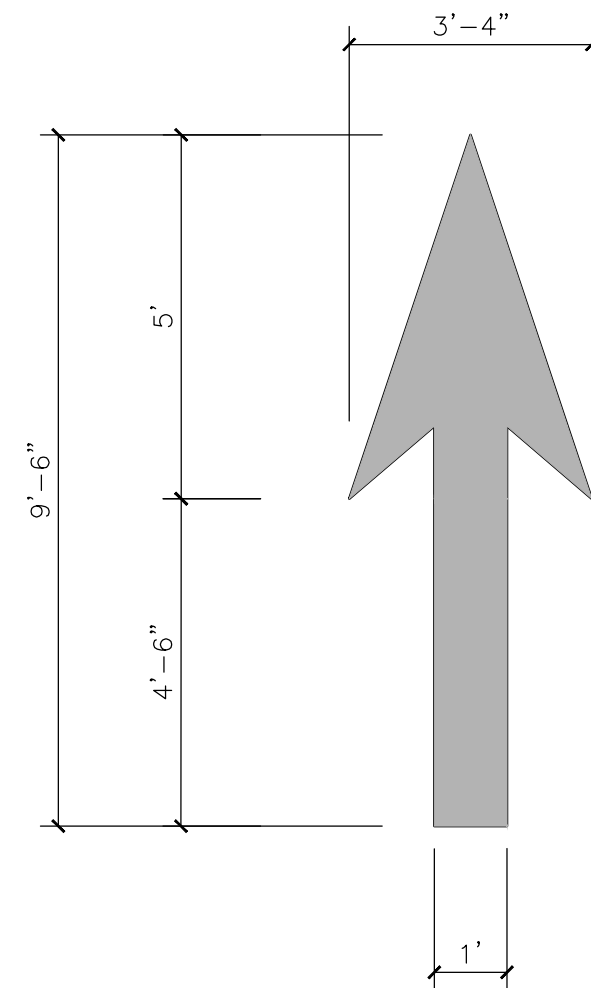
W:\1425-13 Malcom Randall VAMC ADA Construction Plans\1425-13 DWG10 Cl.12, Cl.13 & Cl.14- SITE DETAILS.dwg 3-17-17 11:12:30 AM jmueller



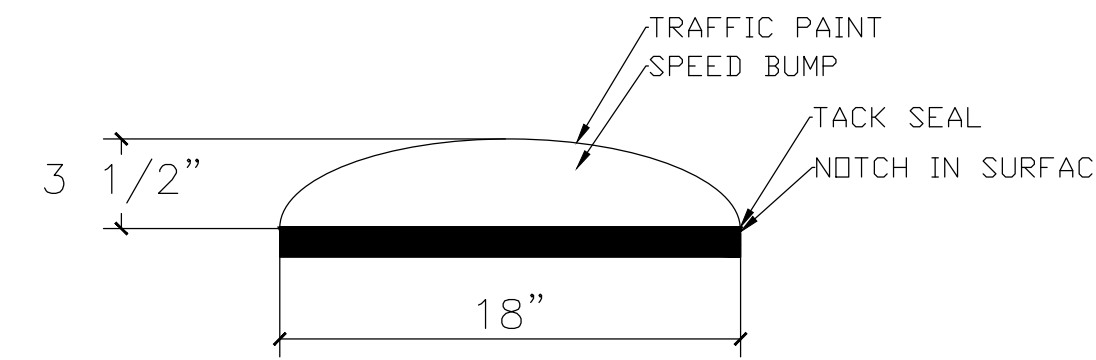
19 TYPE 'D' CONCRETE CURB AND TERMINAL SECTION NTS



20 STRIPING DETAIL FOR CROSSWALK NTS



21 DIRECTIONAL ARROW NTS

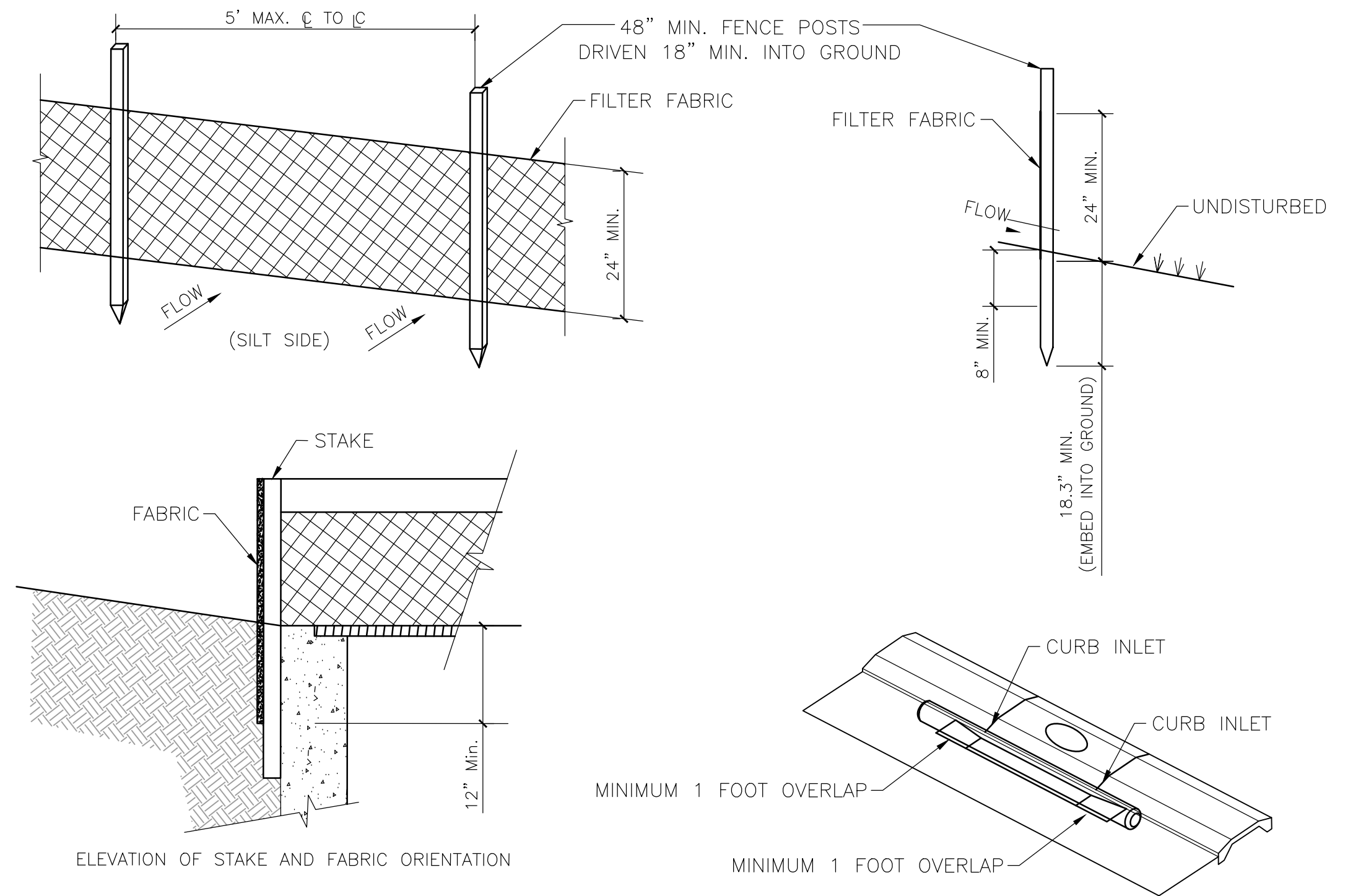


- NOTES:**
1. LAY OUT AND MARK AREA FOR PLACEMENT OF SPEED BUMPS.
 2. CLEAN AREA OF ALL DIRT AND DEBRIS.
 3. NOTCH EXISTING ASPHALT SURFACE TO ALLEVIATE SPEED BUMP DISPLACEMENT.
 4. TACK COAT AREA OF INSTALLATION USING LIQUID ASPHALT.
 5. INSTALL HOT MIX SURFACE ASPHALT TO A MAXIMUM HEIGHT OF 3-1/2" AT THE APEX AND A WIDTH OF 18".
 6. APPLY A SEAL OF LIQUID ASPHALT TO THE ADJOINING EDGE OF THE INSTALLATION TO HELP PREVENT MOISTURE PENETRATION.
 7. APPLY HEAVY-DUTY REFLECTIVE TRAFFIC PAINT SUFFICIENT TO IDENTIFY THE SPEED BUMP.

25 SPEED BUMP NTS

EROSION CONTROL NOTES:

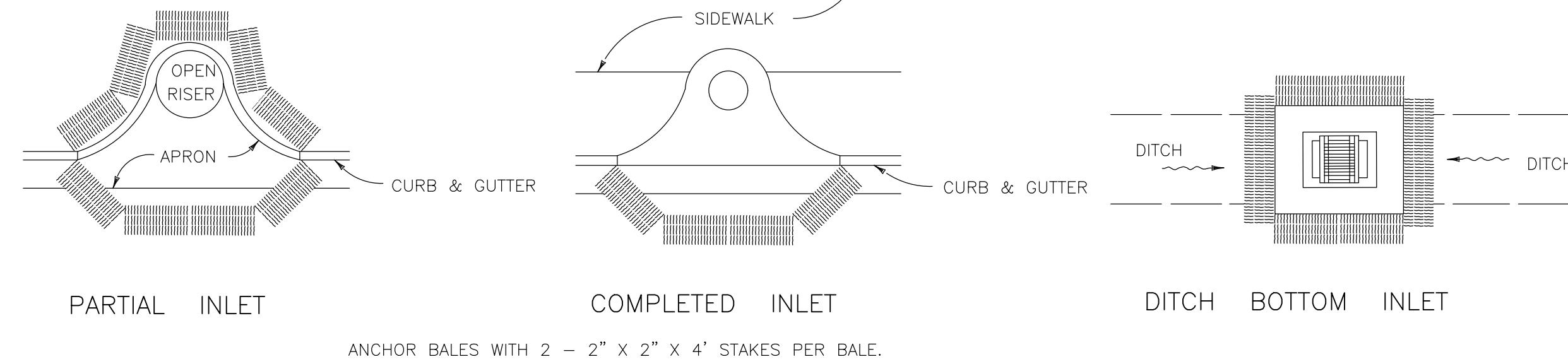
1. ALL PRACTICAL AND NECESSARY EFFORT SHALL BE TAKEN, DURING CONSTRUCTION TO CONTROL AND PREVENT EROSION AND TRANSPORT OF SEDIMENT TO SURFACE DRAINS, SURFACE WATER OR OFFSITE.
2. EROSION CONTROL MEASURES WILL BE IN ACCORDANCE WITH THE ST. JOHNS RIVER WATER MANAGEMENT DISTRICT BEST MANAGEMENT PRACTICES, THE FLORIDA DEPARTMENT OF ENVIRONMENTAL PROTECTION NPDES GENERIC PERMIT FOR STORMWATER DISCHARGE FROM SMALL (LESS THAN 5 ACRES) CONSTRUCTION ACTIVITIES, AND THE CONTRACTOR'S STORM WATER POLLUTION PREVENTION PLAN.
3. ALL EROSION CONTROL AND SEDIMENTATION CONTROL DEVICES SHALL BE CONSTRUCTED SIMULTANEOUSLY WITH THE DISTURBANCE OF THE LAND AND SHALL REMAIN FUNCTIONAL UNTIL THE CONTRIBUTING DISTURBED AREAS ARE STABILIZED.
4. SILT BARRIERS SHALL BE INSTALLED PER DETAILS AND INSTALLED AS NECESSARY TO PREVENT EXCESSIVE SEDIMENTATION DEPOSITS DOWNSTREAM AND WITHIN DRAINAGE SYSTEM.
5. ALL DISTURBED AREAS THAT WILL NOT BE FURTHER DEVELOPED MUST BE GRASSED IMMEDIATELY TO REDUCE SOIL EROSION.
6. ALL SEDIMENT CONTROL MEASURES SHALL BE INSPECTED AT LEAST ONCE EVERY 7 CALENDAR DAYS AND AFTER ANY STORM EVENT GREATER THAN 0.5 INCHES OF PRECIPITATION DURING ANY 24 HOUR PERIOD. ALL SEDIMENT CONTROL FEATURES SHALL BE MAINTAINED UNTIL FINAL STABILIZATION HAS BEEN OBTAINED.
7. STABILIZATION MEASURES SHALL BE INITIATED AS SOON AS PRACTICABLE IN PORTIONS OF THE SITE WHERE CONSTRUCTION ACTIVITIES HAVE TEMPORARILY OR PERMANENTLY CEASED, BUT IN NO CASE MORE THAN 14 DAYS AFTER CONSTRUCTION ACTIVITY IN THAT PORTION OF THE SITE HAS TEMPORARILY OR PERMANENTLY CEASED UNLESS ACTIVITY IN THAT PORTION OF THE SITE WILL RESUME WITHIN 21 DAYS.
8. CONTRACTOR TO PROVIDE SILT FENCE AND/OR OTHER CONTROL DEVICES, AS MAY BE REQUIRED TO CONTROL SOIL EROSION DURING UTILITY CONSTRUCTION. ALL DISTURBED AREAS SHALL BE CLEANED, GRADED AND STABILIZED WITH GRASSING IMMEDIATELY AFTER THE UTILITY INSTALLATION.
9. ALL EROSION CONTROL DEVICES SHALL BE PROPERLY MAINTAINED DURING ALL PHASES OF CONSTRUCTION UNTIL THE COMPLETION OF ALL CONSTRUCTION ACTIVITIES AND ALL DISTURBED AREAS HAVE BEEN STABILIZED. ADDITIONAL CONTROL DEVICES MAY BE REQUIRED DURING CONSTRUCTION IN ORDER TO CONTROL EROSION AND/OR SEDIMENTATION. ALL TEMPORARY CONTROL DEVICES SHALL BE REMOVED ONCE CONSTRUCTION IS COMPLETE IS COMPLETE AND THE SITE IS STABILIZED.
10. THE CONTRACTOR MUST TAKE NECESSARY ACTION TO MINIMIZE TRACKING OF MUD ONTO PAVED ROADWAY FROM CONSTRUCTION AREAS. THE CONTRACTOR SHALL REMOVE MUD/SOIL FROM PAVEMENT, AS MAY BE REQUIRED.



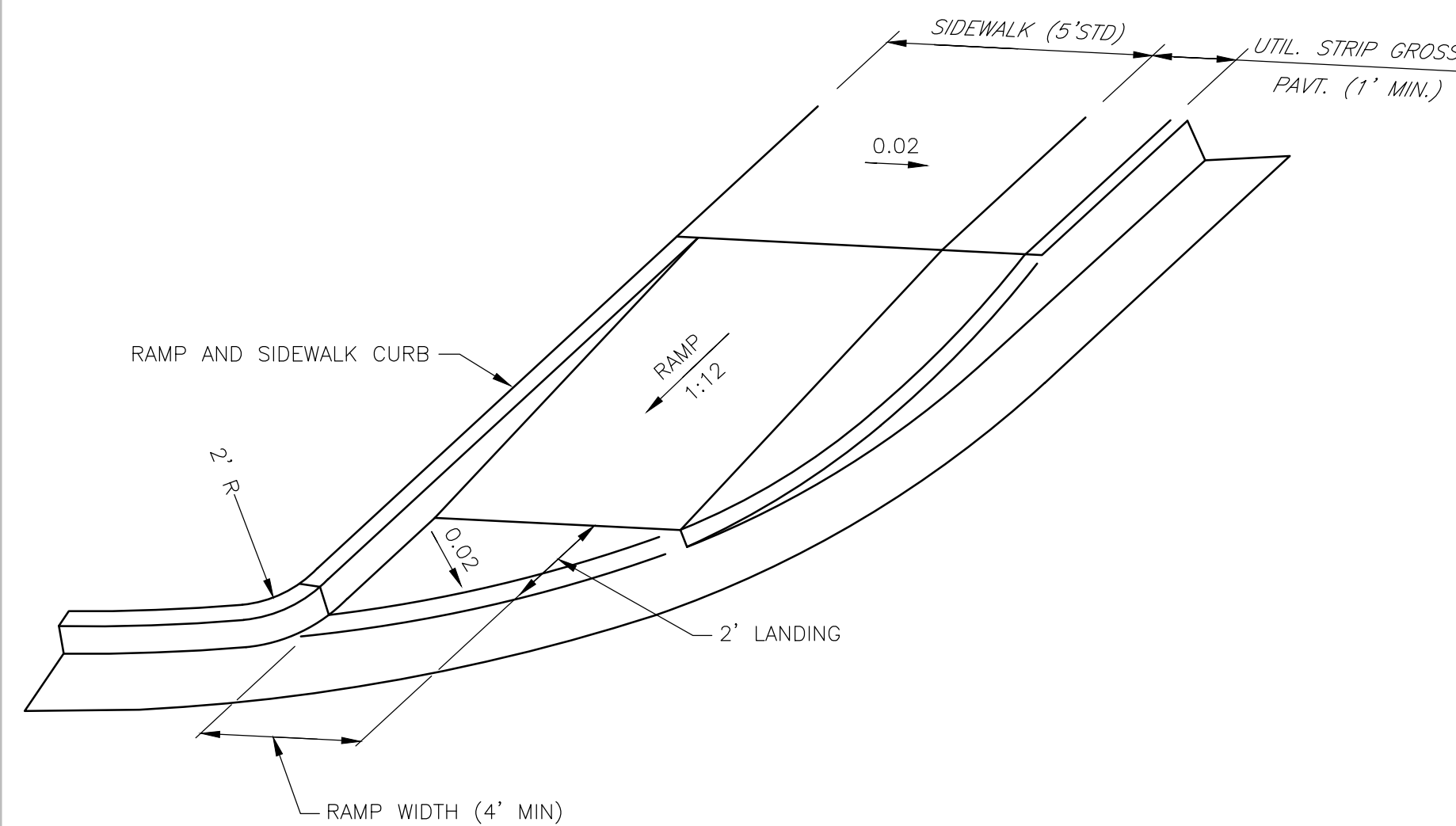
SILT FENCE INSTALLATION NOTES:

1. SILT BARRIERS SHALL BE INSTALLED AROUND SITE AND INLETS AS DETAILED PRIOR TO ANY CONSTRUCTION ACTIVITY.
2. CONTRACTOR SHALL MAINTAIN AND CONTINUE TO INSTALL SILT BARRIERS AS REQUIRED TO PROVIDE EROSION FOR THE CURRENT CONSTRUCTION ACTIVITY.
3. FILTER FABRIC SHALL BE FASTENED SECURELY TO POSTS.
4. WHEN TWO SECTIONS OF FILTER FABRIC ADJOIN EACH OTHER THEY SHALL BE OVERLAPPED BY SIX INCHES AND FOLDED.
5. POSTS SHALL BE 2"x4" OR 2-1/2" MIN. DIA. WOOD OR STEEL 1.33#/FT. MIN.

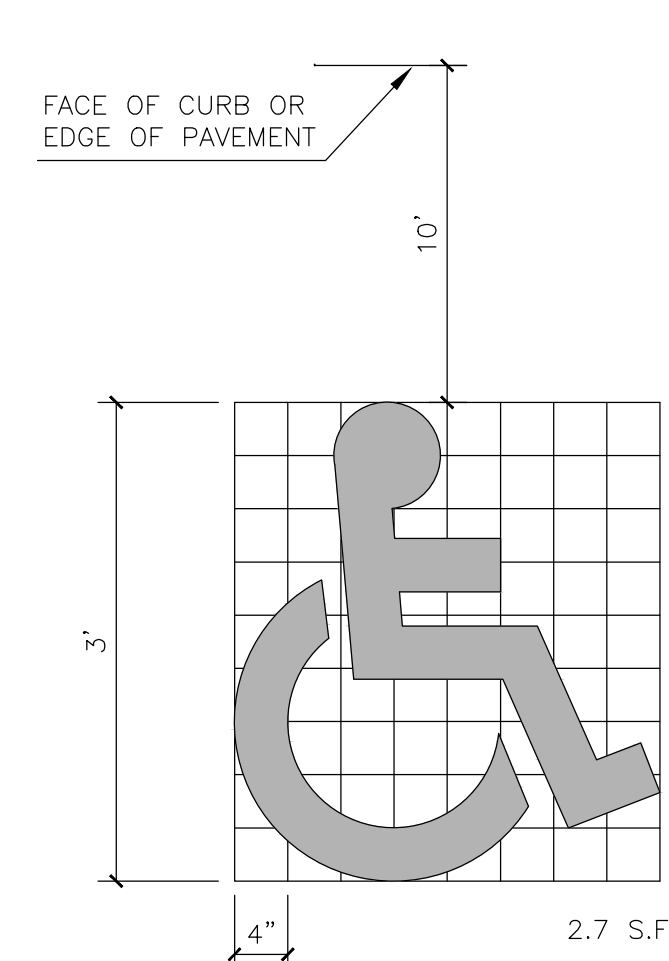
22 SILT FENCE and CURB INLET FILTER DETAILS NTS



23 PROTECTION AROUND INLETS OR SIMILAR STRUCTURES NTS

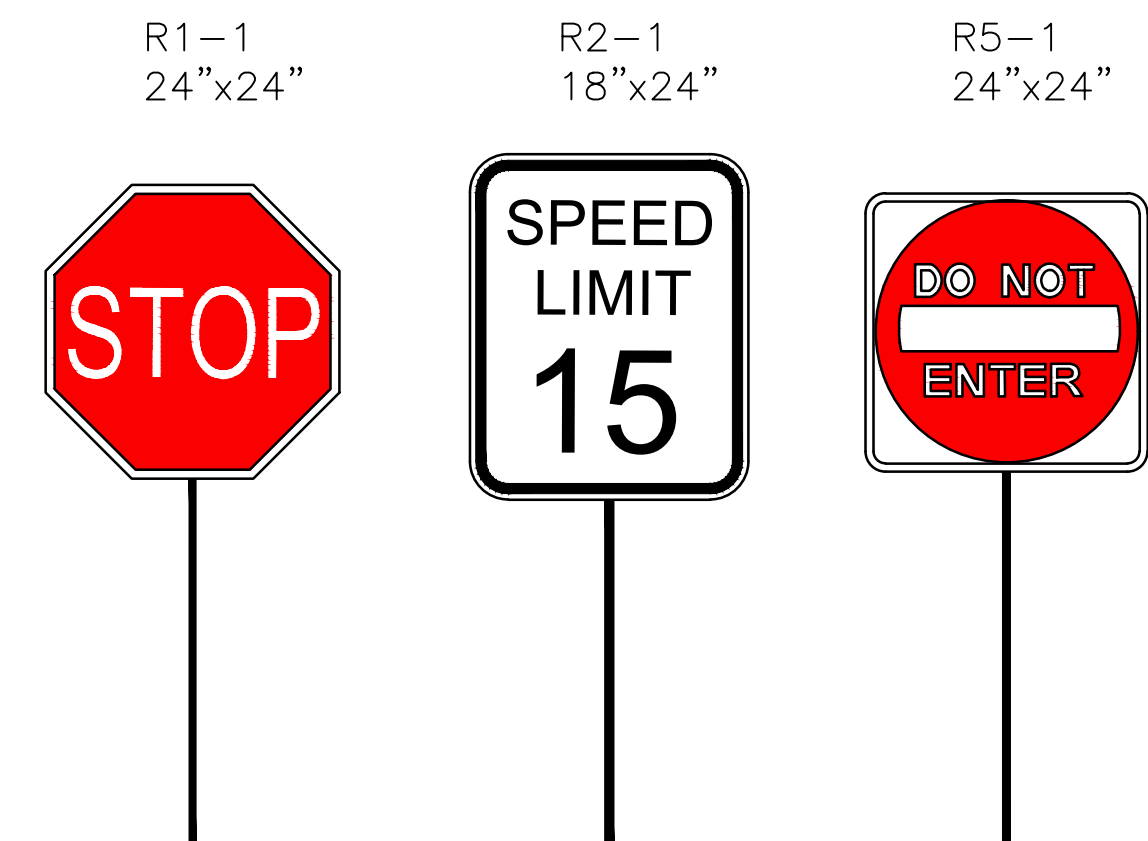


27 SIDEWALK CROSSWALK CURB RAMP DETAIL FDOT INDEX #304 C-21 NTS



SYMBOL SHALL BE WHITE IN COLOR

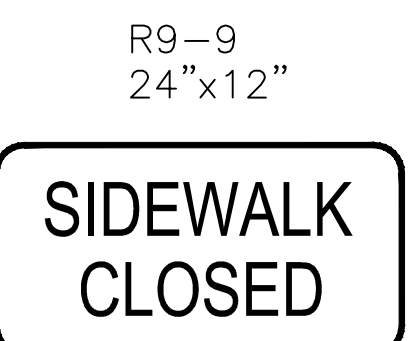
28 ACCESSIBILITY SYMBOL NTS



29 TRAFFIC SIGNS NTS



30 PEDESTRIAN SIGN NTS



31 PEDESTRIAN SIGN NTS

Number	Description	Date
1	REVISED 100% CONSTRUCTION DRAWINGS	6/15/2016

MECHANICAL / ELECTRICAL ENGINEERS:



MES GROUP
550 NORTH REO STREET, SUITE 203
TAMPA, FL 33609
PHONE: (813) 289-4700
FAX: (813) 289-1041
WWW. MESGROUPINC.COM

CIVIL ENGINEERS:



Sprinkle
Consulting
Planners + Engineers
18115 U.S. HWY. 41 NORTH SUITE 600
LUTZ, FL 33549
PHONE: (813) 949-7449 FAX: (813) 909-9840
WWW. SPRINKLECONSULTING.COM
BOARD OF ENGINEERS CERTIFICATE OF AUTHORIZATION #4548

J. DALLAS EVANS, P.E.
FLORIDA LICENSE # 72691

Drawing Title
SITE DETAILS C

Approved Project Director

Project Status: REVISED 100% CONSTRUCTION DRAWINGS

Project Title
UPDATE SITE FOR COMPLIANCE
WITH VA BARRIER FREE GUIDE

Location
GAINESVILLE, FL
PROJECT #573-13-601

Date
06/15/2016

Checked

Drawn

Project Number
573-13-601

Building Number
N/A

Drawing Number
CI.14

Dwg. 41 of 50

Office of
Construction
and Facilities
Management

