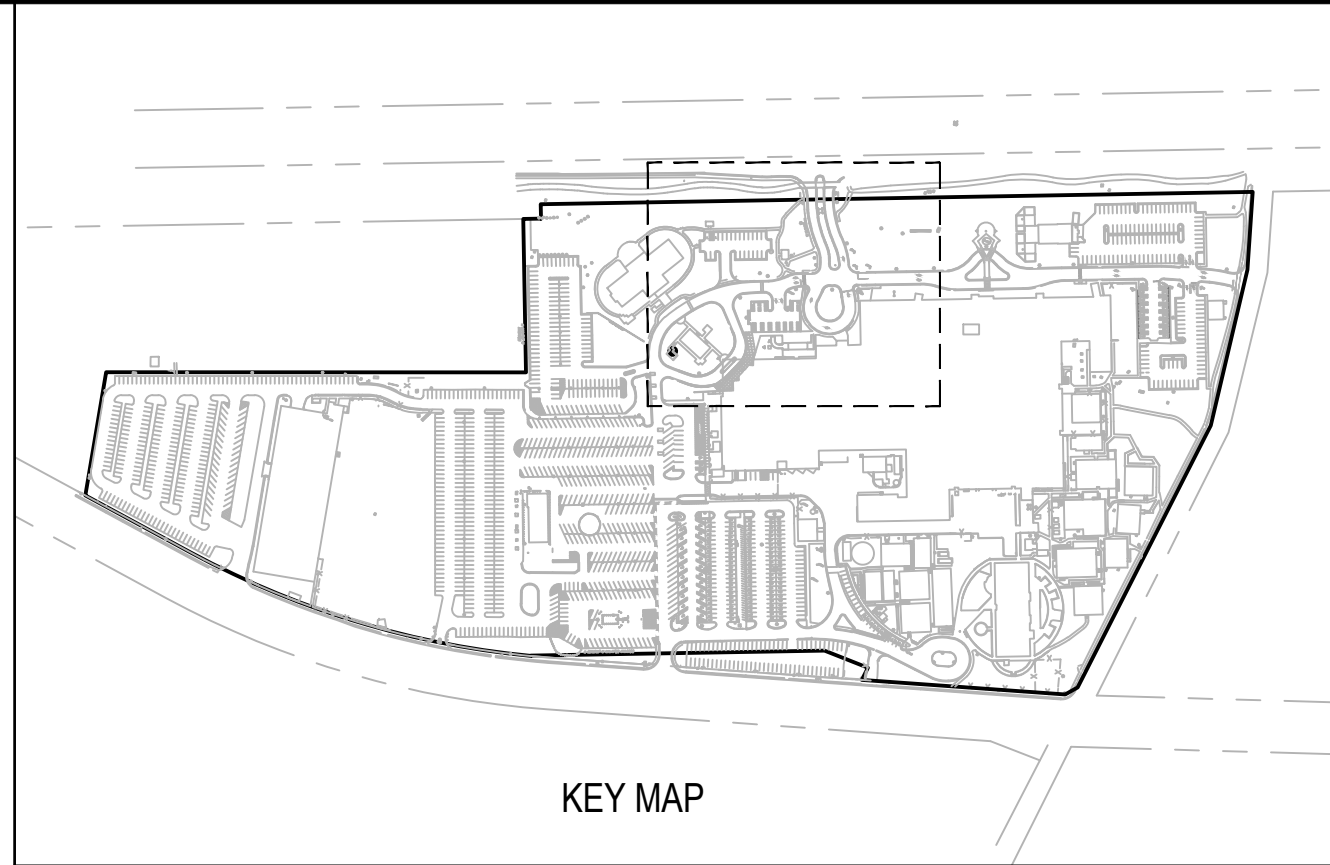
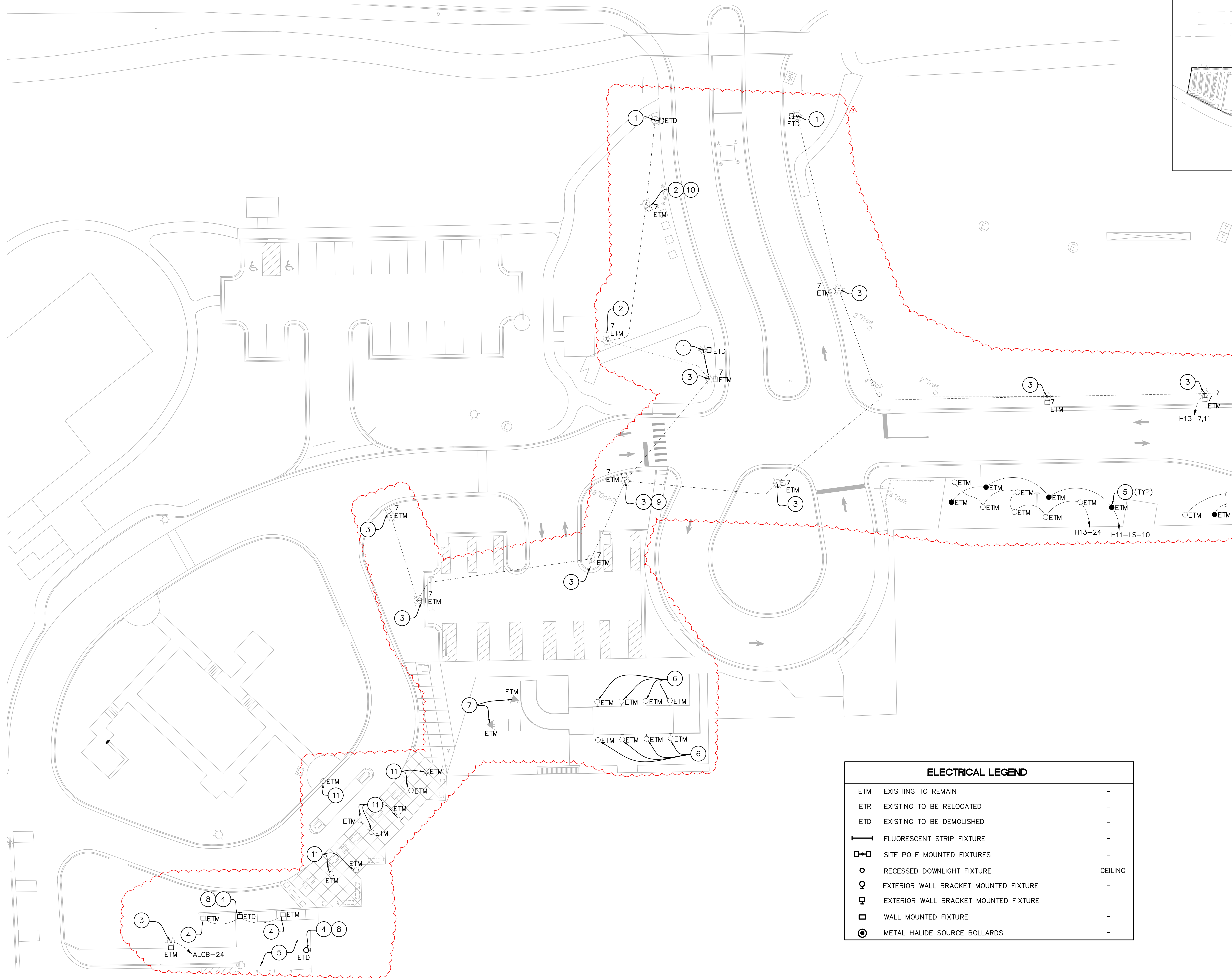


K:\2013537 va gainesville barrier free\2013537-E-101.dwg 3-16-17 09:41:04 AM Pmoody



GENERAL NOTES:

- CONTRACTOR SHALL LIMIT ACCESS TO ACTIVE CONSTRUCTION AREAS THROUGH USE OF TEMPORARY FENCING (PORTABLE CHAIN LINK FENCE 6' IN HEIGHT WITH GATES FOR ACCESS).
- UNLESS OTHERWISE NOTED, THE DEMOLITION SCOPE OF WORK CALLS FOR THE REMOVAL AND DISPOSAL OF ALL ELECTRICAL EQUIPMENT LOCATED WITHIN THE BOUNDARIES OF THE PROJECT AREA. THE ELECTRICAL DRAWINGS DO NOT NECESSARILY REFLECT ALL ACTUAL ELECTRICAL ITEMS TO BE DEMOLISHED AND/OR ACTUAL LOCATIONS OF ITEMS.
- EXISTING LIGHTING FIXTURES AND ASSOCIATED COMPONENTS SHOWN OF PLANS ARE APPROXIMATE LOCATIONS AND IS PROVIDED FOR REFERENCE USE ONLY. FIELD VERIFY EXACT LOCATIONS, SIZES AND CONDITIONS OF EXISTING COMPONENTS.
- CONTRACTOR SHALL OBTAIN ALL EXISTING ELECTRICAL DRAWINGS OF THE AREA FROM THE VA BEFORE STARTING THE DEMOLITION WORK. ALL EXISTING LIGHTING CIRCUITS SHALL BE TRACED BACK TO THEIR SOURCE.
- COORDINATE ALL REQUIRED EQUIPMENT SHUTDOWNS WITH THE VA REPRESENTATIVE PRIOR TO PROCEEDING TO DISCONNECT EQUIPMENT.
- CIRCUIT CONTINUITY SHALL BE MAINTAINED TO ALL AREAS NOT PART OF THE PROJECT DURING AND AFTER CONSTRUCTION. PROVIDE TEMPORARY POWER AND LIGHTING DURING CONSTRUCTION AS NEEDED.

KEYED NOTES:

- EXISTING LIGHT POLE WITH UNKNOWN LAMP SOURCE TO BE REMOVED. EXISTING LIGHTING CIRCUIT SHALL REMAIN AND BE REUSED. SEE DRAWING E-201 FOR MORE INFORMATION.
- EXISTING 30 FOOT POLE WITH COBRA HEAD LUMINAIRE.
- EXISTING 30 FOOT POLE WITH METAL HALIDE SOURCE.
- EXISTING WALL FLOOD LIGHTS.
- EXISTING DOWNLIGHTING UNDER CANOPY.
- EXISTING WALL PACKS ON RESTROOM BUILDING.
- FLAG FLOOD LIGHTS.
- EXISTING FIXTURE TO BE REMOVED. EXISTING LIGHTING CIRCUIT SHALL REMAIN AND BE REUSED. SEE DRAWING E-201 FOR MORE INFORMATION.
- CONTRACTOR SHALL TRIM EXISTING TREE BACK SO IT DOES NOT INTERFERE WITH EXISTING POLE MOUNTED LIGHTING FIXTURE.
- LIGHTING FIXTURE SHALL BE RE-AIMED TO COVER GENERATOR ENCLOSURE. SEE DRAWING E-201 FOR MORE INFORMATION.
- EXISTING SURFACE MOUNTED CYLINDER FIXTURE.

ELECTRICAL LEGEND

| | | |
|-----|---------------------------------------|---------|
| ETM | EXISTING TO REMAIN | - |
| ETR | EXISTING TO BE RELOCATED | - |
| ETD | EXISTING TO BE DEMOLISHED | - |
| — | FLUORESCENT STRIP FIXTURE | - |
| □-□ | SITE POLE MOUNTED FIXTURES | - |
| ○ | RECESSED DOWNLIGHT FIXTURE | CEILING |
| ⊙ | EXTERIOR WALL BRACKET MOUNTED FIXTURE | - |
| ⊞ | EXTERIOR WALL BRACKET MOUNTED FIXTURE | - |
| □ | WALL MOUNTED FIXTURE | - |
| ⊙ | METAL HALIDE SOURCE BOLLARDS | - |

| Number | Description | Date |
|--------|------------------------------------|-----------|
| 1 | REVISED 100% CONSTRUCTION DRAWINGS | 6/15/2016 |
| 2 | REVISED 100% CONSTRUCTION DRAWINGS | 6/24/2016 |
| 3 | REVISED 100% CONSTRUCTION DRAWINGS | 3/16/2017 |
| | | |
| | | |
| | | |
| | | |
| | | |
| | | |
| | | |

MECHANICAL / ELECTRICAL ENGINEERS:

MES GROUP

MES GROUP
550 NORTH REO STREET, SUITE 203
TAMPA, FL 33609
PHONE: (813) 289-4700
FAX: (813) 289-1041
WWW.MESGROUPINC.COM

DALE A. BACIK, P.E.
36564

CIVIL ENGINEERS:



Sprinkle
CONSULTING
Planners + Engineers

18115 U.S. HWY. 41 NORTH SUITE 600
LUTZ, FL 33549
PHONE: (813) 949-7449 FAX: (813) 909-9840
WWW.SPRINKLECONSULTING.COM
BOARD OF ENGINEERS CERTIFICATE OF AUTHORIZATION #4548

Drawing Title

AREAS 5, 6, 7A, AND 7B -
DEMOLITION PLAN

Approved Project Director

Project Status: REVISED 100% CONSTRUCTION DRAWINGS

Project Title

UPDATE SITE FOR COMPLIANCE
WITH VA BARRIER FREE GUIDE

Location

GAINESVILLE, FL

PROJECT #573-13-601

Date

06/15/2016

Checked

Drawn

Project Number

573-13-601

Building Number

N/A

Drawing Number

ED-101

Dwg. 43 of 50

Office of
Construction
and Facilities
Management



Department of
Veterans Affairs