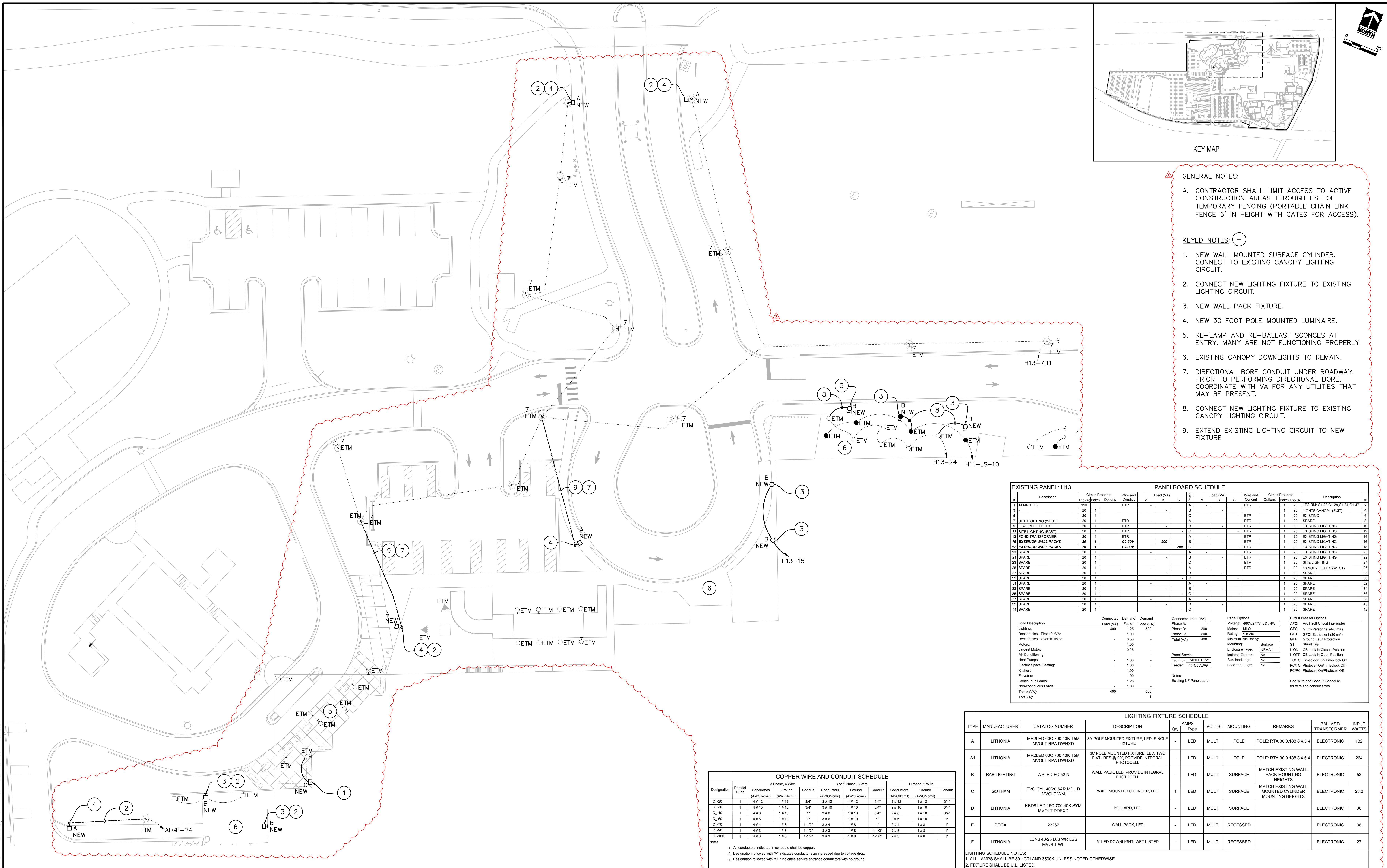


K:\2013537 - va gainesville barrier free\2013537 - E-201.dwg 3-16-17 09:41:26 AM Pmoody



GENERAL NOTES:

- CONTRACTOR SHALL LIMIT ACCESS TO ACTIVE CONSTRUCTION AREAS THROUGH USE OF TEMPORARY FENCING (PORTABLE CHAIN LINK FENCE 6' IN HEIGHT WITH GATES FOR ACCESS).

KEYED NOTES:

- NEW WALL MOUNTED SURFACE CYLINDER. CONNECT TO EXISTING CANOPY LIGHTING CIRCUIT.
- CONNECT NEW LIGHTING FIXTURE TO EXISTING LIGHTING CIRCUIT.
- NEW WALL PACK FIXTURE.
- NEW 30 FOOT POLE MOUNTED LUMINAIRE.
- RE-LAMP AND RE-BALLAST SCONCES AT ENTRY. MANY ARE NOT FUNCTIONING PROPERLY.
- EXISTING CANOPY DOWNLIGHTS TO REMAIN.
- DIRECTIONAL BORE CONDUIT UNDER ROADWAY. PRIOR TO PERFORMING DIRECTIONAL BORE, COORDINATE WITH VA FOR ANY UTILITIES THAT MAY BE PRESENT.
- CONNECT NEW LIGHTING FIXTURE TO EXISTING CANOPY LIGHTING CIRCUIT.
- EXTEND EXISTING LIGHTING CIRCUIT TO NEW FIXTURE

EXISTING PANEL: H13										PANELBOARD SCHEDULE									
#	Description	Circuit Breakers			Wire and Conduit	Load (VA)			Wire and Conduit	Circuit Breakers			Description	#					
		Trips	Amps	Options	ETR	A	B	C	ETR	A	B	C							
3	XFMTR TL13	110	3		ETR	-	-	-	ETR	-	-	-	1	1					
4		20	1			-	-	-		-	-	-	1	1					
5		20	1			-	-	-		-	-	-	1	1					
7	SITE LIGHTING (WEST)	20	1		ETR	-	-	-	ETR	-	-	-	1	20					
9	FLAG POLE LIGHTS	20	1		ETR	-	-	-	ETR	-	-	-	1	20					
11	SITE LIGHTING (EAST)	20	1		ETR	-	-	-	ETR	-	-	-	1	20					
13	POND TRANSFORMER	20	1		ETR	-	-	-	ETR	-	-	-	1	20					
15	EXTERIOR WALL PACKS	20	1		C2-30V		200		ETR	-	-	-	1	20					
17	EXTERIOR WALL PACKS	20	1		C2-30V		200		ETR	-	-	-	1	20					
19	SPARE	20	1			-	-	-	ETR	-	-	-	1	20					
21	SPARE	20	1			-	-	-	ETR	-	-	-	1	20					
23	SPARE	20	1			-	-	-	ETR	-	-	-	1	20					
25	SPARE	20	1			-	-	-	ETR	-	-	-	1	20					
27	SPARE	20	1			-	-	-	ETR	-	-	-	1	20					
29	SPARE	20	1			-	-	-	ETR	-	-	-	1	20					
31	SPARE	20	1			-	-	-	ETR	-	-	-	1	20					
33	SPARE	20	1			-	-	-	ETR	-	-	-	1	20					
35	SPARE	20	1			-	-	-	ETR	-	-	-	1	20					
37	SPARE	20	1			-	-	-	ETR	-	-	-	1	20					
39	SPARE	20	1			-	-	-	ETR	-	-	-	1	20					
41	SPARE	20	1			-	-	-	ETR	-	-	-	1	20					
Load Description		Connected Load (VA)	Demand Load (VA)	Demand Load (VA)	Connected Load (VA)			Panel Options			Circuit Breaker Options								
Lighting		100	1.25	200	Phase A: 100			Voltage: 480Y/277V, 3Ø, 4W			ACFI As Fast Circuit Interrupter								
Receptacles - First 10 kVA:			1.00		Phase B: 200			Main: MLC			GFCI General Purpose (4 mA)								
Receptacles - Over 10 kVA:			1.00		Total (VA): 400			Rating 1Ø kAC			GFCI Equipment (30 mA)								
Motors			1.00					Minimum Bus Rating:			GFP Ground Fault Protection								
Largest Motor:			0.25					Mounting:			ST Short Trip								
Air Conditioning								Enclosure Type:			NEMA								
Heat Pumps:								Isolated Ground:			No								
Electric Space Heating:								Sub-feed Logic:			No								
Kitchen:			1.00		Panel Service						OFF Off Lock in Closed Position								
Elevators:			1.00		Feeder: Fan Panel, DP-2						TQTC Timeclock On/Timeclock Off								
Continuous Loads:			1.25		Notes: #F 1Ø AWG						PC/PC Protocol On/Protocol Off								
Non-continuous Loads:			1.00																
Totals (VA):		400		500							See Wire and Conduit Schedule for wire and conduit sizes.								
Total (A):				1															