



Roth Environmental Consultants, Incorporated
a Division of Roth Industries, Inc. ®

September 30, 2015

Mr. Barnard J. Patrick, P. E., President
Mechanical Consultants, Inc.
254 South Laura, Suite 200
Wichita, Kansas 67211-1529

Re: Limited Lead-Based Paint Testing
John Cochran VA Medical Center
915 North Grand Blvd. St. Louis, MO 63106

Dear Mr. Patrick,

On September 16-17, 2015, Roth Environmental Consultants, Inc. performed Lead-base paint testing in the below listed elevator bank locations. Project Manager Jeff Hurst, a certified Missouri lead risk assessor, conducted the limited lead-based paint testing of passenger elevator cars, cart lifts, and dumbwaiter at the John Cochran VA Medical Center. Testing was performed on passenger elevator cars, cart lifts, and dumbwaiter scheduled for upgrades as stated by the provided design narrative dated August 11, 2015.

The following locations were assessed during this inspection:

- Passenger Elevator Bank A (Cars 1-6)
- Passenger Elevator Bank B (Cars 7-9)
- Passenger Elevator 10
- Cart Lifts 5 & 6 (Dirty & Clean)
- Pharmacy Dumbwaiter

The passenger elevator in building #6 was not assessed or included during this inspection, despite it being included in the design narrative. This particular elevator was off-limits at the time of our site visit and not made available to us.

All lead-based paint testing was performed in accordance with our contract and all applicable Federal, State and Local regulations.

Elevator Description:

Passenger Elevator Bank A (Cars 1-6) - Cars 1-4 are passenger elevator cars and share the same hoistway. Cars 5 and 6 are freight elevator cars and share the same hoistway. Each of

Overland Park, Kansas ▪ St. Louis, Missouri
(866) 663-9920 ▪ (913) 663-9920 ▪ (314) 991-0000

Mr. Barnard J. Patrick, P. E., President
Lead-Based Paint Testing
John Cochran VA Medical Center
915 North Grand Blvd. St. Louis, MO 63106
September 30, 2015
Page two

these elevator cars had the same components and the paint testing combinations were homogenous with one another.

Passenger Elevator Bank B (Cars 7-9) – Cars 7-9 are passenger elevator cars and share the same hoistway. Each of these elevator cars had the same components and the paint testing combinations were homogenous with one another. These however, were not homogenous with Cars 1-6.

Passenger Elevator 10 - Car 10 is a passenger elevator car with its' own hoistway servicing the basement and first floors only. This elevator car is unique and not homogenous with any of the others tested.

Cart Lifts 5 & 6 (Dirty and Clean) - These lifts transport dirty and clean laundry within the surgical suite. Cart lift 5 was inspected and we were informed and therefore we have assumed that cart lift 6 is homogenous with cart lift 5.

Pharmacy Dumbwaiter – This dumbwaiter transports prescriptions within the floors of the pharmacy. The pharmacy is unique and not homogenous with any of the others tested.

Limited Lead-Based Paint Testing

Lead-based paint testing was conducted by Jeff Hurst in accordance with all applicable local, state, and federal lead guidelines and regulations. Testing combinations were tested by means of non-destructive XRF technology.

The XRF used for this evaluation was a Thermo Scientific Niton Model # XLp 300A, Serial # #94106. Roth Environmental followed the manufacturer's guidelines for the specific XRF used during the LBP evaluation of the property.

The calibration of the instrument was done in accordance with the Performance Characteristic Sheet (PCS) for this instrument. This instrument was calibrated using NIST Standard Reference Material # 2573, with a known lead content of 1.040 mg/cm^2 . A minimum of 3 calibration readings were conducted prior to and following the lead-based paint testing to ensure manufacturer's standards were met. During the lead-based paint testing, all calibration readings were within acceptable limits, between 0.8 and 1.2 mg/cm^2 .

As demonstrated by the XRF Lead-Based Paint Testing Results (Appendix A), each component tested was assigned a wall which it was near or located on. Said walls were identified as either A, B, C, or D, and are further explained below:

Overland Park, Kansas ▪ St. Louis, Missouri
(866) 663-9920 ▪ (913) 663-9920 ▪ (314) 991-0000

Mr. Barnard J. Patrick, P. E., President
Lead-Based Paint Testing
John Cochran VA Medical Center
915 North Grand Blvd. St. Louis, MO 63106
September 30, 2015
Page three

- Wall A is the wall that contains the entry door to the elevator
- Wall B is the wall to the left of the entry
- Wall C is the wall across from the entry door
- Wall D is the wall right of the entry door.

Lead-Based Paint Testing Results:

Housing and Urban Development (HUD) defines lead-based paint as any paint or other surface coating materials that contain lead equal to or in excess of 1.0 mg/cm^2 or more than five-tenths percent by weight. The XRF Lead-Based Paint Testing Results (Appendix A) will show all components that were tested with positive components (those that tested at or above the HUD lead standard of 1.0 mg/cm^2) indicated in **yellow highlight**.

A total of 334 readings were collected during limited lead-based paint testing. Below is a summary of components that tested positive for lead-based paint along with estimated quantities. For testing locations please refer to Appendix A.

Passenger Elevator Bank A (Cars 1-6):

Black Metal Divider Beam: 528 LF
Black Metal Car Rail: 1,800 LF
Black Metal Counterweight Rail: 1,800 LF
Black Metal Counterweight Spreader Beam: 360 LF
Black Metal Counterweight Frame: 6 Each measuring 4'x3'
Black Metal Ladder: 4 Each at 15' Tall

Mechanical Room

Beige Metal Drain Pipe: 20 LF
Beige Metal Stairway: 1 Each

Elevator Machine Room (Cars 1-6)

Brown Metal Elevator Machine Housing: 6 Each measuring 6' x 6.5'
Brown Metal Bed Plate: 6 Each measuring 5'x5'
Brown Metal Brakes: 6 Each
Beige Metal Ceiling Beam: 120 LF
Gray Wood Window Trim: 3 Each measuring 4'x3'
Beige Wood Window Trim: 2 Each measuring 4'x3'

Passenger Elevator Bank B (Cars 7-9):

Orange Metal Divider Beam: 264 LF

Overland Park, Kansas ▪ St. Louis, Missouri
(866) 663-9920 ▪ (913) 663-9920 ▪ (314) 991-0000

Mr. Barnard J. Patrick, P. E., President
Lead-Based Paint Testing
John Cochran VA Medical Center
915 North Grand Blvd. St. Louis, MO 63106
September 30, 2015
Page four

Passenger Elevator 10

No Lead Based Paint Identified

Cart Lifts 5 & 6 (Dirty and Clean)

No Lead Based Paint Identified

Cart Lift 5 & 6 Equipment Room Penthouse

Blue Metal Motor Housing: 2 Each

Pharmacy Dumbwaiter

No Lead Based Paint Identified

Glossary for Appendix B, Lead-Based Paint Testing Results:

Reading No: Analyzer-generated sequence number

Duration: Timed length of each test

Floor: Level of the floor with respect to all the floor levels in the residence

Room: Standard definition given to each room being tested

Side: Component location within the room based on wall assignment

Color: Surface color of the component under test

Substrate: Composition of the component under test

Component: Item under test (Calibration Standard)

Condition: Surface condition of the component under test

Result: Either Positive or Negative for Lead-Based Paint (LBP) or Null (incomplete test)

Pb C: Total Lead in all paint layers, in milligrams per square centimeter of area

Pb C Error: Standard deviation of total paint reading.

Note: < LOD means less than the Limits of Detection. Readings in **yellow highlight** indicate the presence of lead-based paint in the components being tested in excess of the HUD & EPA action limit of 1.0 mg/cm².

Limitations of Lead-Based Paint Testing

Mr. Hurst conducted a visual survey and lead-based paint testing using X-Ray Fluorescence (XRF) analysis of readily accessible components throughout the elevators, cart lifts, and dumbwaiter included within our contracted scope of work. No destructive testing was

**Overland Park, Kansas ▪ St. Louis, Missouri
(866) 663-9920 ▪ (913) 663-9920 ▪ (314) 991-0000**

Mr. Barnard J. Patrick, P. E., President
Lead-Based Paint Testing
John Cochran VA Medical Center
915 North Grand Blvd. St. Louis, MO 63106
September 30, 2015
Page five

performed so the possibility exists that lead-based paint could exist within inaccessible areas. Additionally, lead-based paint may exist outside of the areas included for testing. If components and/or finishes are found that do not match those tested, they should be presumed and treated as lead-based paint until further testing meeting the HUD requirements is conducted.

The presence or absence of lead-based paint applies only to the tested or assessed surfaces on the date of the field visit and it should be understood that conditions may change due to deterioration or maintenance. The results and material conditions noted within this report were accurate at the time of the evaluation and in no way reflect the conditions at the property after the date of the evaluation.

Certification of Lead-Based Paint Testing

I, the undersigned, being a state certified lead risk assessor, hereby certify that all applicable environmental regulations were adhered to during the testing for lead-based paint at John Cochran VA Medical Center, 915 North Grand Blvd. St Louis, MO 63106.



Jeff Hurst
Missouri Lead Risk Assessor # 000801-200166567
Expiration Date: August 1, 2016

c: Project file 078-AI-2015.001

enclosures

APPENDIX A

XRF Lead-Based Paint Testing Results

Reading No	Time	Type	Duration	Depth Index	Floor	Room	Side	Color	Substrate	Component	Condition	Results	PbC	PbC Error
SHUTTER														
1946	9/16/2015 12:30	_CAL	68.25						Detector Calibration				5.14	0
1947	9/16/2015 12:31	PAINT	20	1.08					NIST Calibration			Positive	1	0.1
1948	9/16/2015 12:31	PAINT	20	1.09					NIST Calibration			Positive	1	0.1
1949	9/16/2015 12:32	PAINT	20	1.11					NIST Calibration			Positive	1	0.1
1950	9/16/2015 12:51	PAINT	9.32	1	9	Passenger Car 1	a	beige	metal	door	intact	Negative	< LOD	0.03
1951	9/16/2015 12:51	PAINT	2.66	1.05			a	black	metal	door dust cover	intact	Negative	< LOD	0.05
1952	9/16/2015 12:51	PAINT	2.23	1			a	brown	metal	door frame	intact	Negative	< LOD	0.05
1953	9/16/2015 12:52	PAINT	2.23	3.3			d	black	metal	duct work	intact	Negative	< LOD	0.15
1954	9/16/2015 12:53	PAINT	1.78	1.67			d	black	metal	divider beam	intact	Positive	24.1	8.1
1955	9/16/2015 12:53	PAINT	2.66	1.76			b	black	metal	ledge dust cover	intact	Negative	< LOD	0.04
1956	9/16/2015 12:54	PAINT	2.23	1			a	brown	metal	elevator car top	intact	Negative	< LOD	0.03
1957	9/16/2015 12:54	PAINT	2.21	2.54			a	brown	metal	sheave cover	intact	Negative	< LOD	0.15
1958	9/16/2015 12:54	PAINT	2.66	1.48			a	brown	metal	crosshead	intact	Negative	0.19	0.12
1959	9/16/2015 12:55	PAINT	1.35	1.47			d	black	metal	car rail	intact	Positive	9.3	6
1960	9/16/2015 12:56	PAINT	1.78	1.59			b	black	metal	counter weight rail	intact	Positive	11.4	5.5
1961	9/16/2015 12:57	PAINT	0.88	1			b	black	metal	terminal slow down	intact	Null	< LOD	0.1
1962	9/16/2015 12:57	PAINT	2.22	1.07			b	black	metal	terminal slow down	intact	Negative	< LOD	0.07
1963	9/16/2015 12:59	PAINT	1.33	1.48			b	black	metal	counter weight spreader beam	intact	Positive	< LOD	9.15
1964	9/16/2015 13:10	PAINT	2.23	1.1	5	Passenger Car 1	a	beige	metal	door	intact	Negative	< LOD	0.06
1965	9/16/2015 13:10	PAINT	2.21	1.15			a	black	metal	door dust cover	intact	Negative	< LOD	0.06
1966	9/16/2015 13:11	PAINT	1.79	1			a	brown	metal	door frame	intact	Negative	< LOD	0.03
1967	9/16/2015 13:11	PAINT	2.23	1			d	black	metal	duct work	intact	Negative	< LOD	0.03
1968	9/16/2015 13:12	PAINT	1.77	1.68			d	black	metal	divider beam	intact	Positive	19.5	8.7
1969	9/16/2015 13:14	PAINT	2.21	1			b	black	metal	ledge dust cover	intact	Negative	< LOD	0.03
1970	9/16/2015 13:14	PAINT	1.33	1.55			d	black	metal	car rail	intact	Positive	7.5	3.5
1971	9/16/2015 13:15	PAINT	1.34	1.71			b	black	metal	counter weight rail	intact	Positive	12.1	7
1972	9/16/2015 13:15	PAINT	1.34	1.22			b	black	metal	counter weight spreader beam	intact	Positive	4.2	1.4
1973	9/16/2015 13:16	PAINT	6.68	1.21			b	black	metal	counter weight frame	intact	Positive	1.8	0.2
1974	9/16/2015 13:19	PAINT	2.23	1			a	brown	metal	elevator lobby frame	intact	Negative	< LOD	0.05
1975	9/16/2015 13:20	PAINT	2.66	1			d	black	metal	counter weights	intact	Negative	< LOD	0.04
1976	9/16/2015 13:21	PAINT	2.22	2.87			d	green	metal	unit strut	intact	Negative	< LOD	0.07
1977	9/16/2015 13:22	PAINT	5.34	1.02			d	red	metal	roller guides	intact	Negative	0.21	0.06
1978	9/16/2015 13:23	PAINT	5.31	4.31			d	black	metal	roller guide assembly	intact	Negative	< LOD	0.05
1979	9/16/2015 13:31	PAINT	2.22	1.4	2	Passenger Car 1	a	beige	metal	door	intact	Negative	< LOD	0.1
1980	9/16/2015 13:31	PAINT	3.13	1			a	black	metal	door dust cover	intact	Negative	< LOD	0.04
1981	9/16/2015 13:31	PAINT	0.88	1.52			a	brown	metal	door frame	intact	Null	< LOD	0.19
1982	9/16/2015 13:32	PAINT	8.45	1			a	brown	metal	door frame	intact	Negative	< LOD	0.03
1983	9/16/2015 13:32	PAINT	5.33	1.65			d	black	metal	duct work	intact	Negative	< LOD	0.03
1984	9/16/2015 13:34	PAINT	2.21	1			b	black	metal	ledge dust cover	intact	Negative	< LOD	0.03
1985	9/16/2015 13:34	PAINT	1.76	1.41			d	black	metal	car rail	intact	Positive	4.7	1.1
1986	9/16/2015 13:35	PAINT	1.34	1.84			b	black	metal	counter weight rail	intact	Positive	< LOD	9.45
1987	9/16/2015 13:35	PAINT	1.33	1.33			b	black	metal	counter weight spreader beam	intact	Positive	4.7	1.7

1988	9/16/2015 13:37	PAINT	2.22	1			b	black	metal	terminal slow down	intact	Negative	< LOD	0.06
1989	9/16/2015 13:37	PAINT	0.89	2.24			a	brown	metal	elevator lobby frame	intact	Null	< LOD	0.37
1990	9/16/2015 13:37	PAINT	3.1	1			a	brown	metal	elevator lobby frame	intact	Negative	< LOD	0.05
1991	9/16/2015 13:38	PAINT	7.56	1.21			a	black	metal	door strut	intact	Negative	0.05	0.02
1992	9/16/2015 13:39	PAINT	0.89	1.54			d	black	metal	divider beam	intact	Positive	< LOD	20.4
1993	9/16/2015 13:48	PAINT	5.32	1.57	Bsmt	Passenger Car 1	a	beige	metal	car door	intact	Negative	< LOD	0.03
1994	9/16/2015 13:48	PAINT	4.41	1.19			a	brown	metal	toe guard	intact	Negative	< LOD	0.03
1995	9/16/2015 13:48	PAINT	2.66	2.31			a	beige	metal	elevator lobby frame	intact	Negative	< LOD	0.1
1996	9/16/2015 13:53	PAINT	2.23	1.39	Pit	Passenger Car 1	a	black	metal	ladder	intact	Positive	7.8	4.1
1997	9/16/2015 13:54	PAINT	3.09	1			a	black	metal	car buffer stand	intact	Negative	< LOD	0.05
1998	9/16/2015 13:54	PAINT	4	1			a	black	metal	pit sheave compensate	intact	Negative	< LOD	0.03
1999	9/16/2015 13:55	PAINT	7.11	1			a	black	metal	counter weight buffer	intact	Negative	0.12	0.03
2000	9/16/2015 13:56	PAINT	2.21	1			c	black	metal	governor counter weight sheave	intact	Negative	< LOD	0.06
2001	9/16/2015 13:56	PAINT	2.23	1.07			a	black	metal	counter weight buffer beam	intact	Negative	< LOD	0.09
2002	9/16/2015 13:57	PAINT	2.67	2.56			d	black	metal	selector tape	intact	Negative	< LOD	0.13
2003	9/16/2015 13:59	PAINT	3.54	1.46			a	black	metal	pit sheave guides	intact	Negative	< LOD	0.07
2004	9/16/2015 14:15	PAINT	2.23	1	9	Passenger Car 3	a	beige	metal	door	intact	Negative	< LOD	0.05
2005	9/16/2015 14:15	PAINT	2.23	2.22			a	black	metal	door dust cover	intact	Negative	< LOD	0.13
2006	9/16/2015 14:16	PAINT	2.67	1.35			a	brown	metal	door frame	intact	Negative	< LOD	0.07
2007	9/16/2015 14:16	PAINT	4.89	1.74			d	black	metal	duct work	intact	Negative	< LOD	0.03
2008	9/16/2015 14:16	PAINT	1.34	1.48			d	black	metal	car rail	intact	Positive	< LOD	8.25
2009	9/16/2015 14:17	PAINT	1.32	1.67			b	black	metal	counter weight rail	intact	Positive	< LOD	18.2
2010	9/16/2015 14:18	PAINT	2.2	1			d	black	metal	terminal slow down	intact	Negative	< LOD	0.06
2011	9/16/2015 14:19	PAINT	1.32	1.29			d	black	metal	counter weight spreader beam	intact	Positive	3.9	1
2012	9/16/2015 14:20	PAINT	1.77	1.55			d	black	metal	divider beam	intact	Positive	20.6	9.1
2013	9/16/2015 14:22	PAINT	2.21	8.2			c	black	metal	ledge dust cover	intact	Null	< LOD	0.34
2014	9/16/2015 14:23	PAINT	4.88	1			c	black	metal	ledge dust cover	intact	Negative	< LOD	0.03
2015	9/16/2015 14:24	PAINT	9.3	1.26			a	beige	metal	elevator lobby frame	intact	Negative	< LOD	0.03
2016	9/16/2015 14:25	PAINT	2.22	1.03			a	brown	metal	elevator car top	intact	Negative	< LOD	0.03
2017	9/16/2015 14:25	PAINT	3.08	2.03			a	brown	metal	sheave cover	intact	Negative	< LOD	0.13
2018	9/16/2015 14:25	PAINT	5.34	1.18			a	brown	metal	crosshead	intact	Negative	0.11	0.04
2019	9/16/2015 14:26	PAINT	2.22	2.19			b	grey	metal	unit strut	intact	Negative	< LOD	0.06
2020	9/16/2015 14:26	PAINT	2.66	1.02			d	red	metal	roller guides	intact	Negative	0.3	0.14
2021	9/16/2015 14:26	PAINT	2.67	1			d	brown	metal	roller guide assembly	intact	Negative	< LOD	0.06
2022	9/16/2015 14:27	PAINT	2.68	1			b	brown	metal	unit strut	intact	Negative	< LOD	0.05
2023	9/16/2015 14:31	PAINT	1.77	1	6	Passenger Car 3	a	beige	metal	door	intact	Negative	< LOD	0.05
2024	9/16/2015 14:31	PAINT	2.66	1			a	beige	metal	door	intact	Negative	< LOD	0.04
2025	9/16/2015 14:32	PAINT	2.23	1.17			a	black	metal	door dust cover	intact	Negative	< LOD	0.06
2026	9/16/2015 14:32	PAINT	11.51	1			a	brown	metal	door frame	intact	Negative	< LOD	0.03
2027	9/16/2015 14:33	PAINT	7.99	1			d	black	metal	duct work	intact	Negative	< LOD	0.03
2028	9/16/2015 14:33	PAINT	1.33	1.52			d	black	metal	car rail	intact	Positive	< LOD	8.85
2029	9/16/2015 14:34	PAINT	0.44	1.79			b	black	metal	counter weight rail	intact	Null	< LOD	20.7
2030	9/16/2015 14:34	PAINT	1.32	1.86			b	black	metal	counter weight rail	intact	Positive	13.6	7.4
2031	9/16/2015 14:35	PAINT	0.89	1.52			b	black	metal	counter weight spreader beam	intact	Positive	10	5
2032	9/16/2015 14:36	PAINT	1.33	1.56			d	black	metal	divider beam	intact	Positive	10.2	6.5
2033	9/16/2015 14:36	PAINT	5.8	1			b	black	metal	ledge dust cover	intact	Negative	< LOD	0.03

2034	9/16/2015 14:37	PAINT	9.32	1.54			a	beige	metal	elevator lobby frame	intact	Negative	< LOD	0.03
2035	9/16/2015 14:38	PAINT	4.44	1.01			b	red	brick	wall	intact	Negative	< LOD	0.03
2036	9/16/2015 14:38	PAINT	4.44	1			c	red	brick	wall	intact	Negative	< LOD	0.03
2037	9/16/2015 14:39	PAINT	2.21	2.46			b	black	metal	counter weight sheave	intact	Negative	< LOD	0.16
2038	9/16/2015 14:39	PAINT	0.45	1.96			b	black	metal	counter weight	intact	Null	< LOD	0.25
2039	9/16/2015 14:40	PAINT	1.33	1			b	black	metal	counter weight	intact	Negative	< LOD	0.03
2040	9/16/2015 14:41	PAINT	2.66	1			d	black	metal	wiring duct work	intact	Negative	< LOD	0.03
2041	9/16/2015 14:43	PAINT	2.66	3.54	1	Passenger Car 3	a	black	metal	door	intact	Negative	< LOD	0.07
2042	9/16/2015 14:44	PAINT	2.22	1.43			a	black	metal	door dust cover	intact	Negative	< LOD	0.08
2043	9/16/2015 14:44	PAINT	7.09	1			a	brown	metal	door frame	intact	Negative	< LOD	0.03
2044	9/16/2015 14:45	PAINT	8.01	1			d	black	metal	duct work	intact	Negative	< LOD	0.03
2045	9/16/2015 14:45	PAINT	0.89	1.56			d	black	metal	car rail	intact	Positive	9.3	4.6
2046	9/16/2015 14:45	PAINT	1.33	1.46			b	black	metal	counter weight rail	intact	Positive	7.3	2.7
2047	9/16/2015 14:46	PAINT	1.33	1.66			b	black	metal	counter weight spreader beam	intact	Positive	< LOD	9.15
2048	9/16/2015 14:47	PAINT	1.32	1.56			d	black	metal	divider beam	intact	Positive	14	7.5
2049	9/16/2015 14:47	PAINT	2.66	4.12			b	black	metal	ledge dust cover	intact	Negative	< LOD	0.14
2050	9/16/2015 14:48	PAINT	2.22	1			a	beige	metal	elevator lobby frame	intact	Negative	< LOD	0.05
2051	9/16/2015 14:50	PAINT	8.41	1			d	black	metal	terminal slow down	intact	Negative	< LOD	0.03
2052	9/16/2015 14:54	PAINT	2.2	1	Pit	Passenger Car 3	a	beige	metal	elevator door	intact	Negative	< LOD	0.03
2053	9/16/2015 14:54	PAINT	2.23	1.12			a	brown	metal	toe guard	intact	Negative	< LOD	0.05
2054	9/16/2015 14:55	PAINT	2.66	1			a	beige	metal	elevator door lobby frame	intact	Negative	< LOD	0.03
2055	9/16/2015 14:57	PAINT	2.23	1.49			a	black	metal	car buffer stand	intact	Negative	< LOD	0.19
2056	9/16/2015 14:58	PAINT	2.24	1			d	black	metal	counter weight buffer	intact	Negative	< LOD	0.06
2057	9/16/2015 14:58	PAINT	2.21	1			d	black	metal	governor tail sheave	intact	Negative	< LOD	0.03
2058	9/16/2015 14:58	PAINT	0.89	1.68			d	black	metal	ladder	intact	Positive	< LOD	12.2
2059	9/16/2015 14:59	PAINT	5.32	1			c	black	metal	compensate sheave	intact	Negative	< LOD	0.03
2060	9/16/2015 15:00	PAINT	4.87	1.22			c	black	metal	compensate sheave guide	intact	Negative	< LOD	0.03
2061	9/16/2015 15:01	PAINT	8.45	1.37			a	black	metal	car buffer brace	intact	Negative	0.09	0.03
2062	9/16/2015 15:01	PAINT	4.44	1.74			a	gray	concrete	floor	intact	Negative	< LOD	0.03
2063	9/16/2015 15:07	PAINT	20	1.07						NIST Calibration		Positive	1	0.1
2064	9/16/2015 15:07	PAINT	18.56	1.07						NIST Calibration		Null	1	0.1
2065	9/16/2015 15:08	PAINT	20	1.06						NIST Calibration		Negative	0.9	0.1
		SHUTTER												
2066	9/17/2015 7:10	_CAL	68.26							Detector Calibration			4.68	0
2067	9/17/2015 7:11	PAINT	20	1.1						NIST Calibration		Positive	1	0.1
2068	9/17/2015 7:12	PAINT	20	1.12						NIST Calibration		Positive	1	0.1
2069	9/17/2015 7:12	PAINT	20	1.12						NIST Calibration		Positive	1	0.1
2070	9/17/2015 7:20	PAINT	2.65	1	Pit	Passenger Car 6	a	white	metal	lobby door frame	intact	Negative	< LOD	0.03
2071	9/17/2015 7:21	PAINT	5.72	1			a	white	metal	lobby door	intact	Negative	< LOD	0.03
2072	9/17/2015 7:22	PAINT	5.76	1.18			a	black	metal	car buffer	intact	Negative	0.06	0.03
2073	9/17/2015 7:22	PAINT	7.97	1			d	black	metal	counter weight buffer	intact	Negative	< LOD	0.03
2074	9/17/2015 7:23	PAINT	2.63	1			b	black	metal	governor tail sheave	intact	Negative	< LOD	0.03
2075	9/17/2015 7:23	PAINT	1.78	1.39			b	black	metal	ladder	intact	Positive	< LOD	6.45
2076	9/17/2015 7:24	PAINT	2.65	3.52			b	black	metal	compensate sheave	intact	Negative	< LOD	0.21
2077	9/17/2015 7:24	PAINT	2.21	1.82			b	black	metal	compensate sheave guide	intact	Negative	< LOD	0.07
2078	9/17/2015 7:24	PAINT	3.54	1			a	black	metal	car buffer brace	intact	Negative	< LOD	0.05

2079	9/17/2015 7:25 PAINT	4.42	1			a	gray	concrete	floor	intact	Negative	< LOD	0.03
2080	9/17/2015 7:25 PAINT	6.2	1			d	black	metal	car rail	intact	Negative	< LOD	0.03
2081	9/17/2015 7:25 PAINT	6.21	1.34			d	black	metal	car rail	intact	Negative	< LOD	0.03
2082	9/17/2015 7:26 PAINT	2.23	1			b	black	metal	counter weight rail	intact	Negative	< LOD	0.05
2083	9/17/2015 7:26 PAINT	2.23	1.68			b	black	metal	counter weight rail	intact	Negative	< LOD	0.09
2084	9/17/2015 7:26 PAINT	3.11	1			b	black	metal	counter weight	intact	Negative	< LOD	0.06
2085	9/17/2015 7:27 PAINT	2.21	1.22			b	black	metal	counter weight spreader beam	intact	Negative	< LOD	0.15
2086	9/17/2015 7:28 PAINT	2.22	1.46			d	black	metal	selector tape	intact	Negative	< LOD	0.04
2087	9/17/2015 7:28 PAINT	2.19	1			a	black	metal	dust cover door	intact	Negative	< LOD	0.06
2088	9/17/2015 7:29 PAINT	1.34	1.38			d	black	metal	divider beam	intact	Positive	10.1	6.3
2089	9/17/2015 7:31 PAINT	2.21	1.01			a	black	metal	elevator door	intact	Negative	< LOD	0.03
2090	9/17/2015 7:42 PAINT	3.54	3.72	10	Mechanical Room	a	beige	metal	door	intact	Negative	< LOD	0.07
2091	9/17/2015 7:43 PAINT	5.29	1			a	beige	metal	door frame	intact	Negative	< LOD	0.03
2092	9/17/2015 7:43 PAINT	5.31	1.66			a	white	brick	wall	intact	Negative	< LOD	0.03
2093	9/17/2015 7:43 PAINT	6.2	1.2			b	brown	brick	wall	intact	Negative	< LOD	0.03
2094	9/17/2015 7:44 PAINT	4.46	2.21			c	brown	brick	wall	intact	Negative	< LOD	0.03
2095	9/17/2015 7:44 PAINT	4.01	1.33			d	brown	brick	wall	intact	Negative	< LOD	0.03
2096	9/17/2015 7:45 PAINT	2.23	2.03			d	beige	metal	drain pipe	intact	Positive	3.6	1
2097	9/17/2015 7:46 PAINT	3.98	1.45			d	beige	metal	stairway	intact	Positive	7.3	2.1
Secondary Equipment Room													
2098	9/17/2015 7:48 PAINT	5.31	1	10	Cars 1-6	a	black	metal	beam rope shackle	intact	Negative	< LOD	0.03
2099	9/17/2015 7:48 PAINT	3.98	1			a	gray	metal	duct work	intact	Negative	< LOD	0.03
2100	9/17/2015 7:48 PAINT	2.21	1			a	black	metal	ceiling beam	intact	Negative	< LOD	0.04
2101	9/17/2015 7:49 PAINT	3.11	1			c	gray	metal	governor	intact	Negative	< LOD	0.03
2102	9/17/2015 7:52 PAINT	4.43	1	10	Mechanical Room Elevator Machine	d	beige	concrete	column	intact	Negative	< LOD	0.03
2103	9/17/2015 7:56 PAINT	2.21	1	11	Room, Cars 1-6	a	black	metal	door	intact	Negative	< LOD	0.03
2104	9/17/2015 7:56 PAINT	2.21	1			a	black	metal	door frame	intact	Negative	< LOD	0.03
Elevator Machine Room, Car 4													
2105	9/17/2015 7:56 PAINT	3.54	1.35	11	Room, Car 4	a	brown	metal	elevator machine housing	intact	Negative	0.8	0.1
2106	9/17/2015 7:57 PAINT	7.98	1.67			a	brown	metal	bed plate	intact	Negative	0.8	0.1
2107	9/17/2015 7:57 PAINT	4.42	1.16			a	brown	metal	bearings	intact	Negative	0.6	0.1
2108	9/17/2015 7:58 PAINT	2.21	1.19			a	brown	metal	brakes	intact	Negative	0.4	0.2
Elevator Machine Room Car 5													
2109	9/17/2015 7:59 PAINT	20	1.51	11	Room Car 5	a	brown	metal	elevator machine housing	intact	Positive	1	0.1
2110	9/17/2015 8:00 PAINT	3.99	1.62			a	brown	metal	elevator machine housing	intact	Positive	1.4	0.2
2111	9/17/2015 8:00 PAINT	4.42	1.83			a	brown	metal	bed plate	intact	Positive	1.3	0.2
2112	9/17/2015 8:01 PAINT	18.62	1.63			a	brown	metal	bearings	intact	Negative	0.8	0.1
2113	9/17/2015 8:02 PAINT	20	1.4			a	brown	metal	brakes	intact	Positive	1.1	0.1
Elevator Machine Room, Cars 1-6													
2114	9/17/2015 8:03 PAINT	7.96	1.61	11	Room, Cars 1-6	a	gray	concrete	floor	intact	Null	< LOD	0.03
2115	9/17/2015 8:04 PAINT	14.14	1			a	gray	concrete	floor	intact	Negative	< LOD	0.03
2116	9/17/2015 8:04 PAINT	4.41	3.54			c	beige	concrete	column	intact	Negative	< LOD	0.05
2117	9/17/2015 8:05 PAINT	4.41	2.55			b	beige	brick	wall	intact	Negative	< LOD	0.03
2118	9/17/2015 8:05 PAINT	4.87	2.36			c	beige	brick	wall	intact	Negative	< LOD	0.03

2119	9/17/2015 8:06	PAINT	5.77	6.07		d	beige	brick	wall	intact	Negative	< LOD	0.09
2120	9/17/2015 8:06	PAINT	2.67	1.01		a	green	metal	window sash	intact	Negative	0.3	0.13
2121	9/17/2015 8:07	PAINT	4.41	1		a	green	wood	window trim	intact	Negative	0.3	0.06
2122	9/17/2015 8:07	PAINT	2.22	1		a	white	drywall	wall	intact	Negative	< LOD	0.03
2123	9/17/2015 8:08	PAINT	1.34	2.91		a	beige	metal	ceiling beam	intact	Positive	20.2	9
2124	9/17/2015 8:12	PAINT	4.42	2.67		a	beige	concrete	ceiling beam	intact	Negative	< LOD	0.03
2125	9/17/2015 8:13	PAINT	4.87	1		b	black	metal	window sash	intact	Negative	< LOD	0.03
2126	9/17/2015 8:13	PAINT	1.77	1.59		b	gray	wood	window trim	intact	Positive	3.1	0.9
2127	9/17/2015 8:14	PAINT	3.11	1.3		c	beige	wood	window trim	intact	Positive	1.5	0.3
2128	9/17/2015 8:15	PAINT	2.23	2.91		d	beige	metal	drain pipe	intact	Negative	< LOD	0.35
2129	9/17/2015 8:16	PAINT	1.32	1.24		d	green	metal	louver frame	intact	Null	0.4	0.2
2130	9/17/2015 8:16	PAINT	3.55	1		d	green	metal	louver frame	intact	Negative	0.29	0.07
2131	9/17/2015 8:17	PAINT	2.66	1		d	silver	metal	louver door	intact	Negative	< LOD	0.03
Elevator Machine													
2132	9/17/2015 8:26	PAINT	3.11	1	Lower	Room, Cars 7,8,9	a	gray	metal	door	intact	Negative	< LOD 0.03
2133	9/17/2015 8:27	PAINT	2.65	1			a	gray	metal	door frame	intact	Negative	< LOD 0.03
2134	9/17/2015 8:27	PAINT	5.31	1			a	gray	concrete	floor	intact	Negative	< LOD 0.03
2135	9/17/2015 8:27	PAINT	5.76	1			a	unfinished	drywall	wall	intact	Negative	< LOD 0.03
2136	9/17/2015 8:27	PAINT	4.44	1			b	unfinished	drywall	wall	intact	Negative	< LOD 0.03
2137	9/17/2015 8:28	PAINT	3.08	1			d	brown	metal	stairwell	intact	Negative	< LOD 0.03
Elevator Machine													
2138	9/17/2015 8:32	PAINT	8.41	1.07	Upper	Room, Cars 7,8,9	a	gray	concrete	floor	intact	Negative	< LOD 0.03
2139	9/17/2015 8:32	PAINT	3.54	1			c	unfinished	drywall	wall	intact	Negative	< LOD 0.03
2140	9/17/2015 8:32	PAINT	7.1	1.21			c	brown	metal	ladder	intact	Negative	< LOD 0.03
2141	9/17/2015 8:33	PAINT	5.74	1			c	brown	metal	ceiling beam	intact	Negative	< LOD 0.03
Elevator Machine													
2142	9/17/2015 8:33	PAINT	7.96	1	Upper	Room, Car 7	c	yellow	metal	floor rope plate	intact	Negative	< LOD 0.03
2143	9/17/2015 8:34	PAINT	7.56	8.77			d	beige	metal	governor	intact	Negative	< LOD 1.21
2144	9/17/2015 8:34	PAINT	3.09	1.7			d	beige	metal	elevator machine housing	intact	Negative	< LOD 0.06
2145	9/17/2015 8:34	PAINT	2.21	1			d	beige	metal	bed plate	intact	Negative	< LOD 0.03
2146	9/17/2015 8:35	PAINT	8.87	1			d	beige	metal	bearings	intact	Negative	< LOD 0.03
2147	9/17/2015 8:35	PAINT	4.46	1			d	beige	metal	brakes	intact	Negative	< LOD 0.03
Elevator Machine													
2148	9/17/2015 8:37	PAINT	5.75	2.04	Upper	Room, Car 9	b	yellow	metal	floor rope plate	intact	Negative	< LOD 0.03
2149	9/17/2015 8:37	PAINT	6.65	2.92			b	beige	metal	governor	intact	Negative	< LOD 0.03
2150	9/17/2015 8:37	PAINT	2.67	1			b	beige	metal	elevator machine housing	intact	Negative	< LOD 0.03
2151	9/17/2015 8:38	PAINT	2.63	1.09			b	beige	metal	bed plate	intact	Negative	< LOD 0.03
2152	9/17/2015 8:38	PAINT	2.65	1.24			b	beige	metal	bearings	intact	Negative	< LOD 0.03
2153	9/17/2015 8:38	PAINT	3.11	1.89			b	beige	metal	brakes	intact	Negative	< LOD 0.05
Elevator Machine													
2154	9/17/2015 8:39	PAINT	7.54	1	Upper	Room, Car 8	c	yellow	metal	floor rope plate	intact	Negative	< LOD 0.03
2155	9/17/2015 8:40	PAINT	3.55	1.6			c	beige	metal	governor	intact	Negative	< LOD 0.03
2156	9/17/2015 8:40	PAINT	2.64	1			c	beige	metal	elevator machine housing	intact	Negative	< LOD 0.03
2157	9/17/2015 8:40	PAINT	2.65	1			c	beige	metal	bed plate	intact	Negative	< LOD 0.03
2158	9/17/2015 8:40	PAINT	2.66	1.87			c	beige	metal	bearings	intact	Negative	< LOD 0.07
2159	9/17/2015 8:41	PAINT	3.98	1.5			c	beige	metal	brakes	intact	Negative	< LOD 0.03

2160	9/17/2015 8:42 PAINT	2.2	1	Upper	Elevator Machine Room, Car 7	a	gray	metal	motor housing	intact	Negative	< LOD	0.03
2161	9/17/2015 8:42 PAINT	3.54	1	Upper	Elevator Machine Room, Car 8	a	gray	metal	motor housing	intact	Negative	< LOD	0.03
2162	9/17/2015 8:42 PAINT	3.08	1	Upper	Elevator Machine Room, Car 9	a	gray	metal	motor housing	intact	Negative	< LOD	0.03
2163	9/17/2015 8:42 PAINT	2.67	1	Upper	Elevator Machine Room, Cars 7,8,9	a	brown	metal	handrail	intact	Negative	< LOD	0.03
2164	9/17/2015 8:44 PAINT	3.11	1			a	beige	metal	duct work	intact	Negative	< LOD	0.03
2165	9/17/2015 9:04 PAINT	1.78	1	1	Passenger Car 8	a	beige	metal	elevator car top	intact	Negative	< LOD	0.03
2166	9/17/2015 9:05 PAINT	4.86	1.89			c	beige	metal	crosshead	intact	Negative	< LOD	0.03
2167	9/17/2015 9:05 PAINT	2.23	1			c	beige	metal	sheave cover	intact	Negative	< LOD	0.03
2168	9/17/2015 9:05 PAINT	5.74	1			a	orange	metal	door	intact	Negative	0.11	0.03
2169	9/17/2015 9:06 PAINT	3.98	2.1			a	black	metal	dust cover	intact	Negative	< LOD	0.04
2170	9/17/2015 9:06 PAINT	5.33	1			a	black	metal	elevator door strut	intact	Negative	< LOD	0.03
2171	9/17/2015 9:07 PAINT	4	1			d	gray	metal	duct work	intact	Negative	< LOD	0.03
2172	9/17/2015 9:07 PAINT	2.21	1.08			d	black	metal	main rail	intact	Negative	< LOD	0.03
2173	9/17/2015 9:08 PAINT	2.21	1.11			d	red	metal	roller guide	intact	Negative	0.4	0.2
2174	9/17/2015 9:08 PAINT	4.41	4.33			d	black	metal	roller guide assembly	intact	Negative	< LOD	0.06
2175	9/17/2015 9:08 PAINT	4.46	1			a	black	metal	elevator electrical duct work	intact	Negative	< LOD	0.03
2176	9/17/2015 9:12 PAINT	0.88	1			d	black	metal	counter weight rail	intact	Null	< LOD	0.03
2177	9/17/2015 9:13 PAINT	7.97	1			d	black	metal	counter weight rail	intact	Negative	< LOD	0.03
2178	9/17/2015 9:13 PAINT	2.22	1			b	beige	metal	terminal motion switch	intact	Negative	< LOD	0.03
2179	9/17/2015 9:15 PAINT	5.32	1.07			a	black	metal	door operator cover	intact	Negative	< LOD	0.03
2180	9/17/2015 9:15 PAINT	2.21	1			b	orange	metal	divider beam	intact	Negative	< LOD	0.03
2181	9/17/2015 9:17 PAINT	1.77	1			b	beige	metal	floor veins	intact	Negative	< LOD	0.03
2182	9/17/2015 9:19 PAINT	0.9	1			d	beige	metal	counter weight	intact	Null	< LOD	0.03
2183	9/17/2015 9:19 PAINT	11.5	1.07			d	beige	metal	counter weight	intact	Negative	< LOD	0.03
2184	9/17/2015 9:19 PAINT	3.98	1.95			d	beige	metal	counter weight sheave	intact	Negative	< LOD	0.03
2185	9/17/2015 9:22 PAINT	2.65	1	5	Passenger Car 8	a	orange	metal	door	intact	Negative	0.13	0.08
2186	9/17/2015 9:23 PAINT	8.43	7.46			a	black	metal	dust cover	intact	Negative	< LOD	0.07
2187	9/17/2015 9:23 PAINT	2.21	1			a	black	metal	elevator door strut	intact	Negative	< LOD	0.03
2188	9/17/2015 9:23 PAINT	1.76	1			d	gray	metal	duct work	intact	Negative	< LOD	0.05
2189	9/17/2015 9:24 PAINT	2.21	1			d	black	metal	main rail	intact	Negative	< LOD	0.03
2190	9/17/2015 9:25 PAINT	2.21	1			d	black	metal	counter weight rail	intact	Negative	< LOD	0.03
2191	9/17/2015 9:25 PAINT	5.74	2.06			b	red	metal	divider beam	intact	Negative	< LOD	0.03
2192	9/17/2015 9:25 PAINT	2.2	1			b	beige	metal	floor veins	intact	Negative	< LOD	0.03
2193	9/17/2015 9:26 PAINT	3.08	1.28			a	orange	metal	elevator door lobby	intact	Negative	0.13	0.08
2194	9/17/2015 9:39 PAINT	2.2	1.91	Pit	Passenger Car 8	a	beige	metal	elevator door	intact	Negative	< LOD	0.2
2195	9/17/2015 9:39 PAINT	3.1	1			c	beige	metal	car buffer	intact	Negative	< LOD	0.03
2196	9/17/2015 9:40 PAINT	2.21	1			d	beige	metal	counter weight buffer	intact	Negative	< LOD	0.03
2197	9/17/2015 9:40 PAINT	0.45	1			a	beige	metal	car buffer support beam	intact	Null	< LOD	0.03
2198	9/17/2015 9:40 PAINT	2.65	1			a	beige	metal	car buffer support beam	intact	Negative	< LOD	0.03
2199	9/17/2015 9:40 PAINT	3.1	1.29			b	beige	metal	governor tail sheave	intact	Negative	< LOD	0.03
2200	9/17/2015 9:41 PAINT	3.1	1.01			d	beige	metal	counter weight guard	intact	Negative	< LOD	0.03
2201	9/17/2015 9:41 PAINT	7.08	3.03			b	orange	metal	ladder	intact	Negative	< LOD	0.03

2202	9/17/2015 9:41	PAINT	2.65	1		b	black	metal	car rail	intact	Negative	< LOD	0.03
2203	9/17/2015 9:42	PAINT	2.64	1		d	black	metal	counter weight rail	intact	Negative	< LOD	0.03
2204	9/17/2015 9:42	PAINT	2.68	1.67		d	orange	metal	divider beam	intact	Positive	12.1	4.3
2205	9/17/2015 9:43	PAINT	2.21	1		d	gray	metal	duct work	intact	Negative	< LOD	0.03
2206	9/17/2015 9:43	PAINT	2.21	1		a	black	metal	dust cover	intact	Negative	< LOD	0.03
Hydraulic Elevator													
2207	9/17/2015 9:53	PAINT	2.66	1	1 10	a	orange	metal	elevator door lobby	intact	Negative	0.13	0.08
2208	9/17/2015 9:57	PAINT	2.66	1.64		a	brown	metal	elevator car top	intact	Negative	< LOD	0.09
2209	9/17/2015 9:57	PAINT	5.75	1		a	brown	metal	crosshead	intact	Negative	< LOD	0.03
2210	9/17/2015 9:58	PAINT	5.74	5.55		a	black	metal	door operator cover	intact	Negative	< LOD	0.06
2211	9/17/2015 9:58	PAINT	2.21	1.03		a	orange	metal	interior elevator door	intact	Negative	< LOD	0.13
2212	9/17/2015 9:58	PAINT	2.2	1		d	black	metal	main rail	intact	Negative	< LOD	0.03
2213	9/17/2015 9:59	PAINT	2.2	1		d	black	metal	duct work	intact	Negative	< LOD	0.03
2214	9/17/2015 10:00	PAINT	2.21	1		b	brown	metal	slide guide assembly	intact	Negative	< LOD	0.03
2215	9/17/2015 10:00	PAINT	2.66	1		a	black	metal	car door header	intact	Negative	< LOD	0.04
2216	9/17/2015 10:00	PAINT	1.33	1		a	black	metal	dust cover	intact	Negative	< LOD	0.03
2217	9/17/2015 10:01	PAINT	2.2	1		b	brown	metal	unit strut	intact	Negative	< LOD	0.03
2218	9/17/2015 10:01	PAINT	5.31	1		b	black	metal	door strut	intact	Negative	< LOD	0.03
2219	9/17/2015 10:02	PAINT	2.21	1.27		d	black	metal	door strut	intact	Negative	< LOD	0.05
Hydraulic Elevator													
2220	9/17/2015 10:02	PAINT	2.65	1	Pit 10	b	orange	metal	ladder	intact	Negative	< LOD	0.04
2221	9/17/2015 10:07	PAINT	2.21	1.06		a	black	metal	pit channel	intact	Negative	< LOD	0.03
2222	9/17/2015 10:07	PAINT	2.67	1.37		a	black	metal	springs	intact	Negative	< LOD	0.03
2223	9/17/2015 10:08	PAINT	5.31	1		b	black	metal	main rail	intact	Negative	< LOD	0.03
2224	9/17/2015 10:08	PAINT	3.97	3.5		d	black	metal	main rail	intact	Negative	< LOD	0.05
2225	9/17/2015 10:08	PAINT	4.87	1		c	black	metal	coupled piping	intact	Negative	< LOD	0.03
2226	9/17/2015 10:09	PAINT	2.65	5.18		a	black	metal	dust cover	intact	Negative	< LOD	0.25
2227	9/17/2015 10:09	PAINT	2.21	1		a	orange	metal	door	intact	Negative	< LOD	0.03
2228	9/17/2015 10:09	PAINT	3.11	1		a	black	metal	door strut	intact	Negative	0.11	0.06
2229	9/17/2015 10:09	PAINT	2.67	1		d	black	metal	duct work	intact	Negative	< LOD	0.04
Machine Room													
2230	9/17/2015 10:10	PAINT	1.77	1	1 Elevator 10	a	stained	wood	door	intact	Negative	< LOD	0.03
2231	9/17/2015 10:13	PAINT	1.76	1		a	red	metal	door frame	intact	Negative	< LOD	0.03
2232	9/17/2015 10:13	PAINT	1.78	1.69		c	brown	metal	hydraulic tank	intact	Negative	< LOD	0.09
2233	9/17/2015 10:13	PAINT	2.21	1		b	white	metal	elevator controller panel	intact	Negative	< LOD	0.06
2234	9/17/2015 10:13	PAINT	4.85	3.42		c	beige	metal	drive belt cover	intact	Negative	< LOD	0.03
2235	9/17/2015 10:13	PAINT	2.22	1		a	beige	metal	door jamb	intact	Negative	< LOD	0.03
Pharmacy													
2236	9/17/2015 10:13	PAINT	4.86	1.1	1 Dumbwaiter	a	white	metal	dumbwaiter door trim	intact	Negative	< LOD	0.03
2237	9/17/2015 10:19	PAINT	2.65	1		b	black	metal	main rail	intact	Negative	< LOD	0.03
2238	9/17/2015 10:21	PAINT	7.12	1.07		b	black	metal	main rail	intact	Negative	< LOD	0.03
2239	9/17/2015 10:21	PAINT	4	1		a	gray	metal	dumbwaiter underside	intact	Negative	< LOD	0.03
2240	9/17/2015 10:21	PAINT	0.44	1		a	gray	metal	dumbwaiter underside	intact	Null	< LOD	0.09
2241	9/17/2015 10:21	PAINT	2.67	1		a	gray	metal	dumbwaiter underside	intact	Negative	< LOD	0.03
2242	9/17/2015 10:28	PAINT	2.65	1		a	stainless	metal	car top	intact	Negative	< LOD	0.03

2243	9/17/2015 10:28 PAINT	1.78	1	4	Pharmacy Dumbwaiter Machine Room	b	black	metal	main rail	intact	Negative	< LOD	0.04
2244	9/17/2015 10:38 PAINT	2.21	1	10	Dirty Cart 5	a	gray	metal	door	intact	Negative	< LOD	0.03
2245	9/17/2015 10:38 PAINT	1.78	1.36			a	gray	metal	door jamb	intact	Negative	< LOD	0.03
2246	9/17/2015 10:39 PAINT	3.97	1.38			a	gray	concrete	floor	intact	Negative	< LOD	0.03
2247	9/17/2015 10:39 PAINT	2.65	1			b	blue	metal	door controller box	intact	Negative	< LOD	0.03
2248	9/17/2015 10:39 PAINT	4	1			c	blue	metal	main controller box	intact	Negative	< LOD	0.03
2249	9/17/2015 10:39 PAINT	2.66	1			a	gray	metal	duct work	intact	Negative	< LOD	0.03
2250	9/17/2015 10:40 PAINT	3.98	1.72			a	gray	metal	governor	intact	Negative	< LOD	0.03
2251	9/17/2015 10:40 PAINT	2.23	1			a	black	metal	bed plate	intact	Negative	< LOD	0.03
2252	9/17/2015 10:40 PAINT	2.67	1			a	blue	metal	motor	intact	Negative	< LOD	0.04
2253	9/17/2015 10:41 PAINT	2.21	1			a	blue	metal	gear box	intact	Negative	< LOD	0.03
2254	9/17/2015 10:41 PAINT	2.21	1			a	blue	metal	sheave	intact	Negative	< LOD	0.03
2255	9/17/2015 10:46 PAINT	3.11	5.25	10	Machine Room Clean Cart 6	a	gray	metal	door	intact	Negative	< LOD	0.13
2256	9/17/2015 10:46 PAINT	4.9	1.3			a	gray	metal	door frame	intact	Negative	< LOD	0.03
2257	9/17/2015 10:46 PAINT	4.44	1			a	gray	concrete	floor	intact	Negative	< LOD	0.03
2258	9/17/2015 10:46 PAINT	5.32	1			b	blue	metal	door controller box	intact	Negative	< LOD	0.03
2259	9/17/2015 10:47 PAINT	3.11	1			c	blue	metal	main controller box	intact	Negative	< LOD	0.03
2260	9/17/2015 10:47 PAINT	3.98	5.12			b	gray	metal	duct work	intact	Negative	< LOD	0.06
2261	9/17/2015 10:47 PAINT	2.21	4.83			b	gray	metal	governor	intact	Negative	< LOD	0.14
2262	9/17/2015 10:47 PAINT	5.76	1.44			b	black	metal	bed plate	intact	Negative	< LOD	0.03
2263	9/17/2015 10:48 PAINT	3.99	1			b	blue	metal	motor	intact	Positive	4.3	1.4
2264	9/17/2015 10:48 PAINT	1.33	1			b	blue	metal	gear box	intact	Negative	< LOD	0.03
2265	9/17/2015 10:48 PAINT	2.21	1			b	blue	metal	sheave	intact	Negative	< LOD	0.03
2266	9/17/2015 10:56 PAINT	2.22	1.63	4	Passenger Elevator 2	a	brown	metal	elevator lobby door	intact	Negative	< LOD	0.07
2267	9/17/2015 10:56 PAINT	2.65	1.08			a	brown	metal	elevator lobby door jamb	intact	Negative	< LOD	0.04
2268	9/17/2015 11:20 PAINT	5.31	1			a	brown	metal	car door header	intact	Negative	< LOD	0.03
2269	9/17/2015 11:20 PAINT	5.31	1			a	brown	metal	car top	intact	Negative	< LOD	0.03
2270	9/17/2015 11:28 PAINT	1.77	2.49	2	Dirty Cart 5	a	gray	metal	car top	intact	Negative	< LOD	0.05
2271	9/17/2015 11:29 PAINT	2.22	1			c	gray	metal	crosshead	intact	Negative	< LOD	0.03
2272	9/17/2015 11:29 PAINT	2.23	1			a	gray	metal	magna grip frame	intact	Negative	< LOD	0.03
2273	9/17/2015 11:29 PAINT	6.66	2.29			a	gray	metal	magna grip frame	intact	Negative	< LOD	0.03
2274	9/17/2015 11:30 PAINT	3.08	1			a	black	metal	main rail	intact	Negative	< LOD	0.03
2275	9/17/2015 11:31 PAINT	2.23	1			d	black	metal	main rail	intact	Negative	< LOD	0.03
2276	9/17/2015 11:31 PAINT	3.11	1			d	gray	metal	duct work	intact	Negative	< LOD	0.03
2277	9/17/2015 11:40 PAINT	20	1.03						NIST Calibration		Negative	0.9	0.1
2278	9/17/2015 11:40 PAINT	20	1.11						NIST Calibration		Positive	1	0.1
2279	9/17/2015 11:41 PAINT	20	1.04						NIST Calibration		Negative	0.9	0.1

APPENDIX B

Example Photos of Positive Lead- Based Paint Components

ROTH ENVIRONMENTAL CONSULTANTS, INC.
PHOTOGRAPHIC RECORD

Client: Roth Environmental
Camera Make: Sony

Roth PO # 078-PI-2015.001

Site Address: 915 North Grand
Site Location: St. Louis MO

Photographer: M Liechti
Date: 9/17/15
Direction:
Comments: John Cochran
VA Medical
Center



Photographer: M Liechti
Date: 9/17/15
Direction:
Comments: Pharmacy
Dumbwaiter



ROTH ENVIRONMENTAL CONSULTANTS, INC.
PHOTOGRAPHIC RECORD

Client: Roth Environmental
Camera Make: Sony

Roth PO # 078-PI-2015.001

Site Address: 915 North Grand
Site Location: St. Louis MO

Photographer: M Liechti
Date: 9/17/15
Direction:
Comments: Pharmacy
Dumbwaiter
Pit



Photographer: M Liechti
Date: 9/17/15
Direction:
Comments: Pharmacy
Dumbwaiter



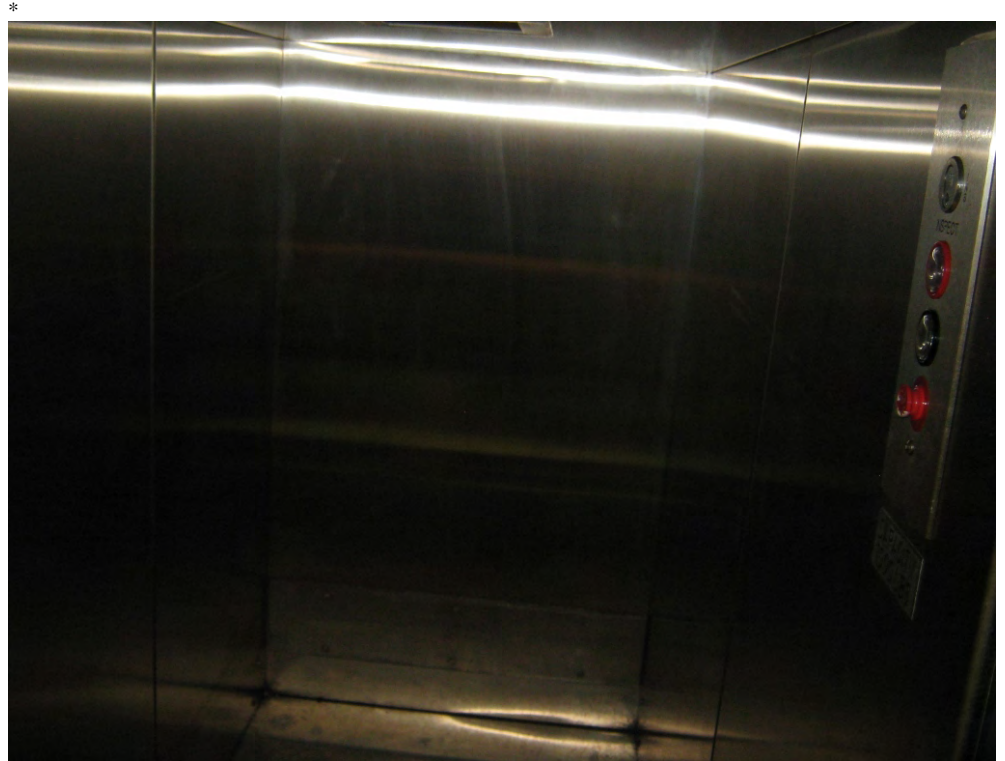
ROTH ENVIRONMENTAL CONSULTANTS, INC.
PHOTOGRAPHIC RECORD

Client: Roth Environmental
Camera Make: Sony

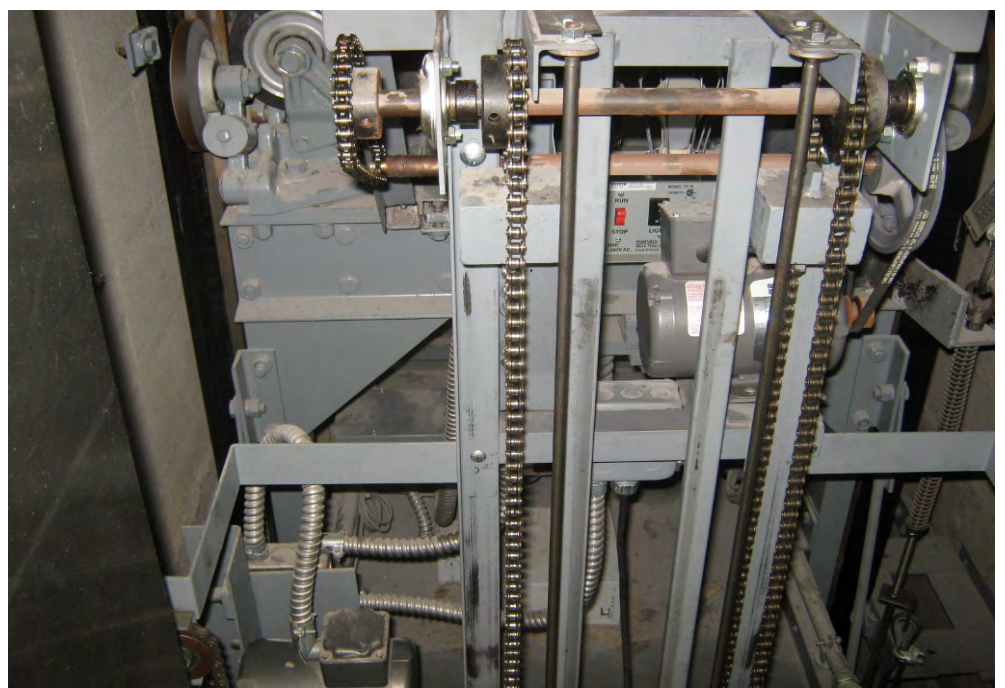
Roth PO # 078-PI-2015.001

Site Address: 915 North Grand
Site Location: St. Louis MO

Photographer: M Liechti
Date: 9/17/15
Direction:
Comments: Cart Lift 5



Photographer: M Liechti
Date: 9/17/15
Direction:
Comments: Cart Lift 5



ROTH ENVIRONMENTAL CONSULTANTS, INC.
PHOTOGRAPHIC RECORD

Client: Roth Environmental
Camera Make: Sony

Roth PO # 078-PI-2015.001

Site Address: 915 North Grand
Site Location: St. Louis MO

Photographer: M Liechti
Date: 9/17/15
Direction:
Comments: Secondary
Equipment
Room Cars 1-6



Photographer: M Liechti
Date: 9/17/15
Direction:
Comments: Elevator
Machine Room
Cars 1-6



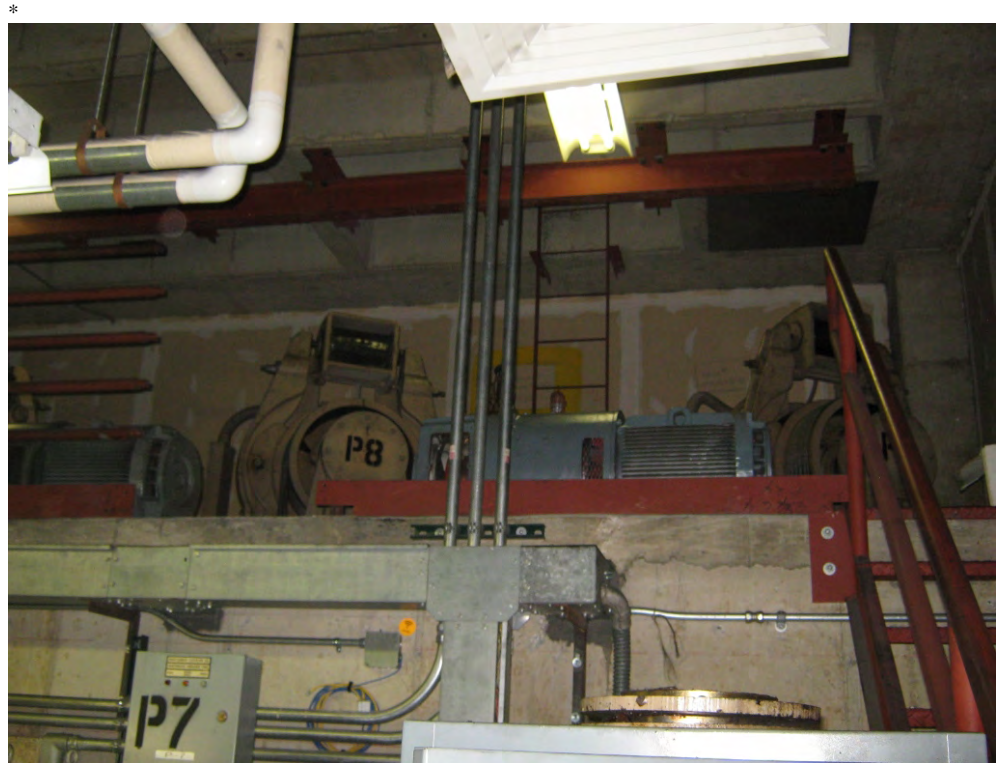
ROTH ENVIRONMENTAL CONSULTANTS, INC.
PHOTOGRAPHIC RECORD

Client: Roth Environmental
Camera Make: Sony

Roth PO # 078-PI-2015.001

Site Address: 915 North Grand
Site Location: St. Louis MO

Photographer: M Liechti
Date: 9/17/15
Direction:
Comments: Elevator
Machine Room
Cars 7-9



Photographer: M Liechti
Date: 9/17/15
Direction:
Comments: Hydraulic
Elevator 10 Pit



ROTH ENVIRONMENTAL CONSULTANTS, INC.
PHOTOGRAPHIC RECORD

Client: Roth Environmental
Camera Make: Sony

Roth PO # 078-PI-2015.001

Site Address: 915 North Grand
Site Location: St. Louis MO

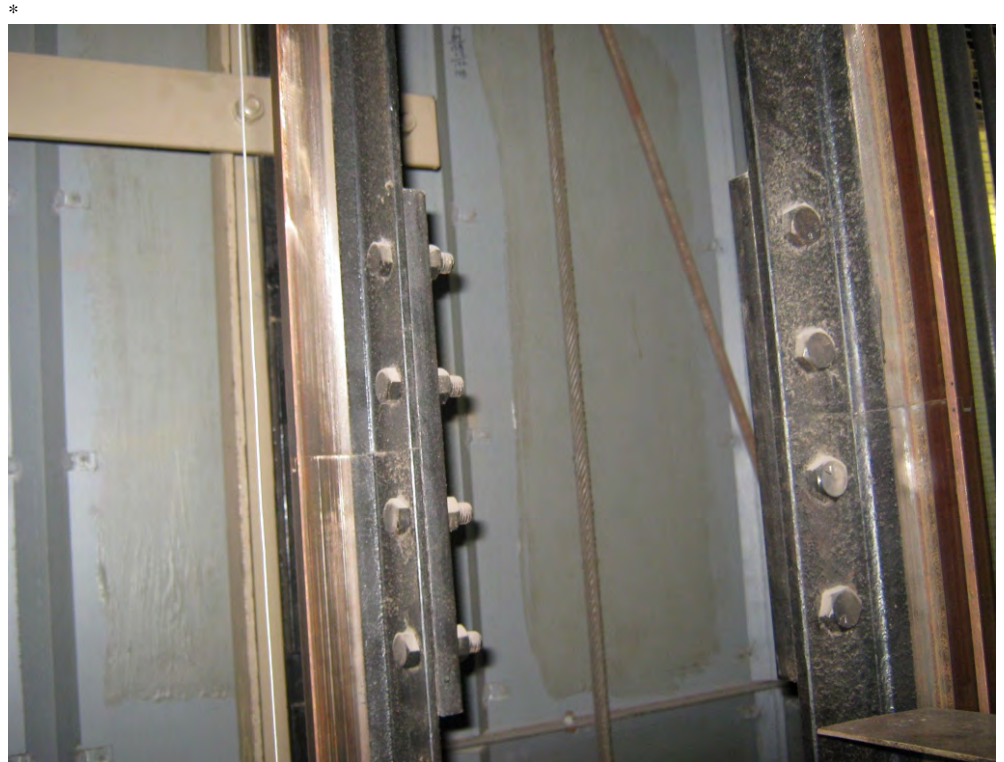
Photographer: M Liechti
Date: 9/17/15
Direction:
Comments: Passenger
Elevator Bank
A Cars 1-6

Black Metal
Divider Beam
(Right Side of
Photo)



Photographer: M Liechti
Date: 9/17/15
Direction:
Comments: Passenger
Elevator Bank
A Cars 1-6

Black Metal
Car Rail



ROTH ENVIRONMENTAL CONSULTANTS, INC.
PHOTOGRAPHIC RECORD

Client: Roth Environmental
Camera Make: Sony

Roth PO # 078-PI-2015.001

Site Address: 915 North Grand
Site Location: St. Louis MO

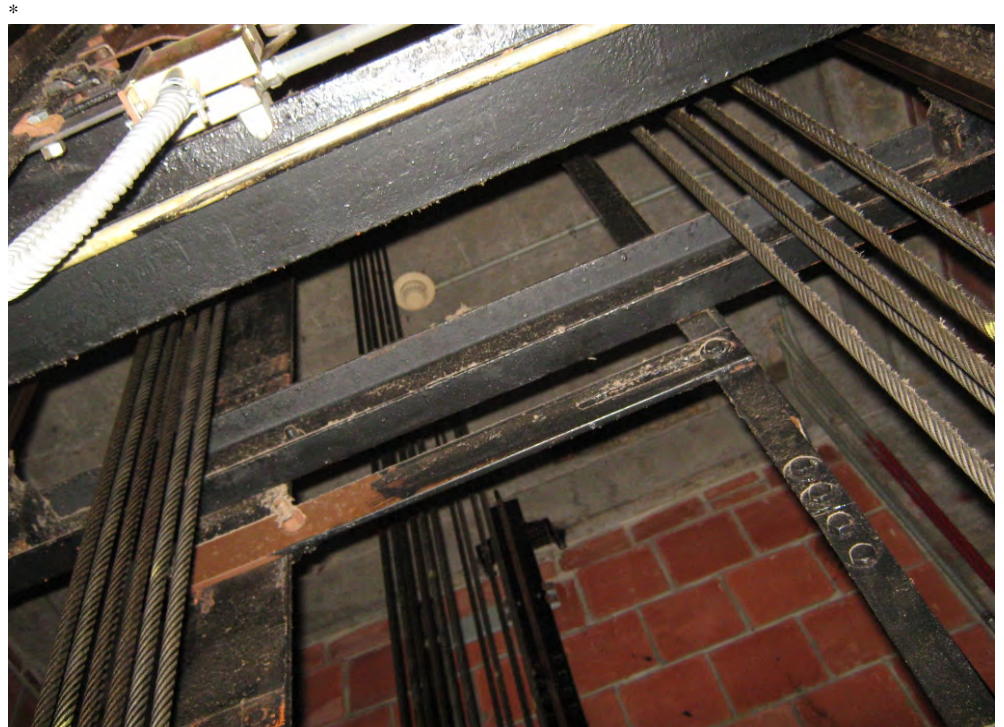
Photographer: M Liechti
Date: 9/17/15
Direction:
Comments: Passenger
Elevator Bank
A Cars 1-6

Black Metal
Counterweight
Rail
(Right Side of
Photo)



Photographer: M Liechti
Date: 9/17/15
Direction:
Comments: Passenger
Elevator Bank
A Cars 1-6

Black Metal
Counterweight
Spreader Beam
(Center of
Photo)



ROTH ENVIRONMENTAL CONSULTANTS, INC.
PHOTOGRAPHIC RECORD

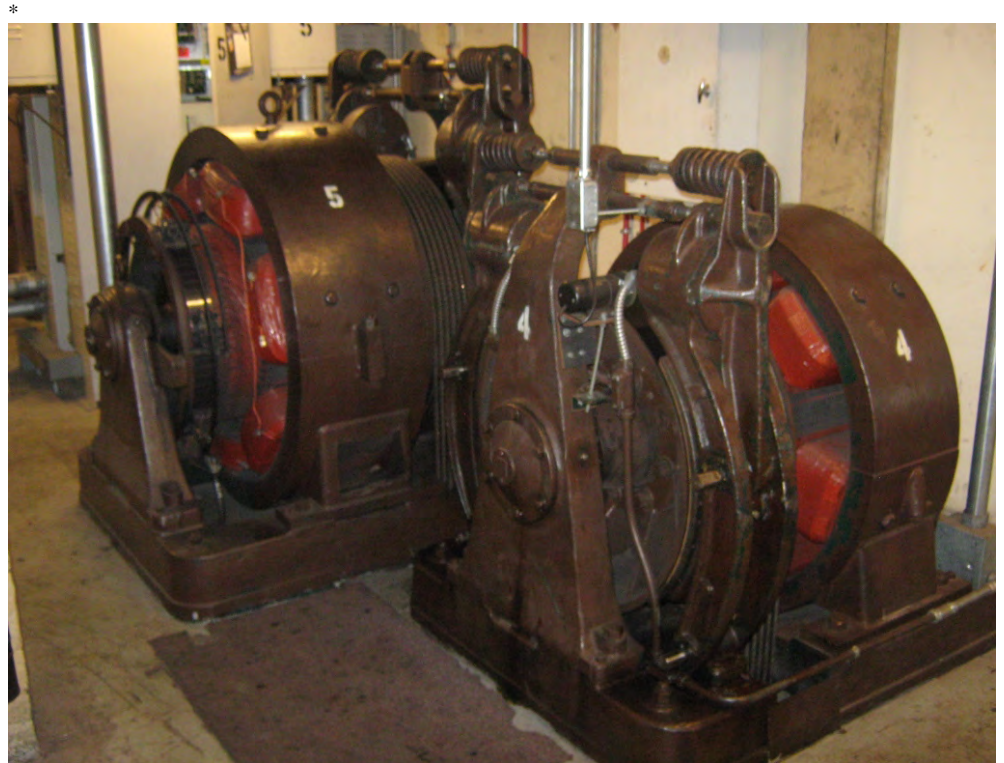
Client: Roth Environmental
Camera Make: Sony

Roth PO # 078-PI-2015.001

Site Address: 915 North Grand
Site Location: St. Louis MO

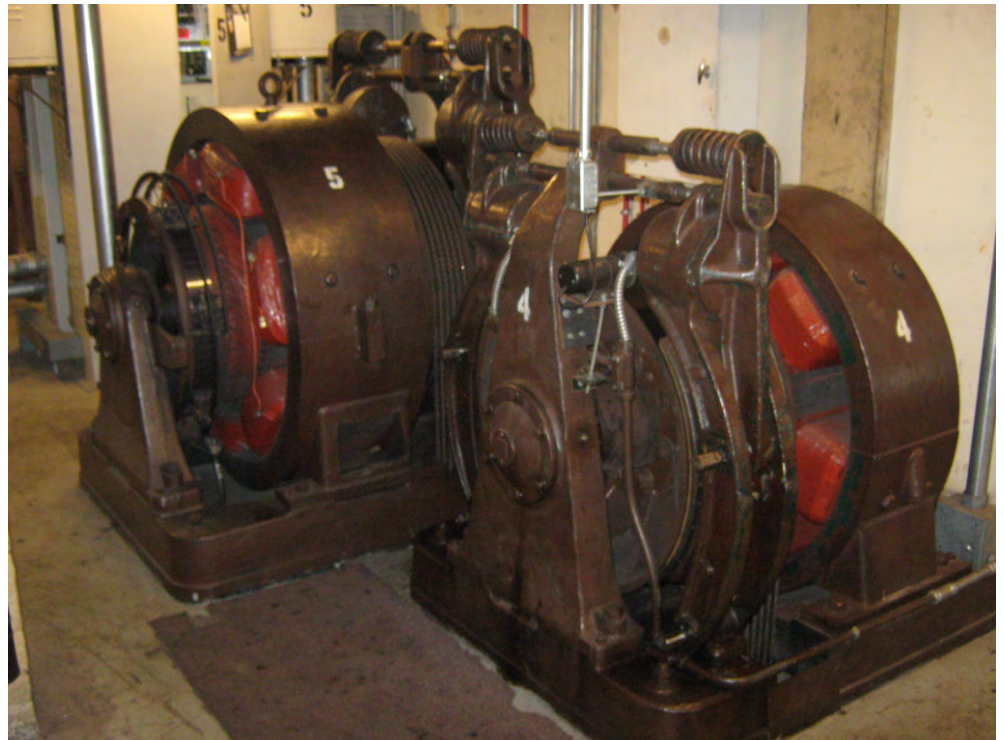
Photographer: M Liechti
Date: 9/17/15
Direction:
Comments: Elevator
Machine Room
Penthouse Cars
1-6

Brown Metal
Elevator
Machine
Housing
(Cylindrical
housing)



Photographer: M Liechti
Date: 9/17/15
Direction:
Comments: Elevator
Machine Room
Penthouse Cars
1-6

Brown Metal
Bed Plate
(Bottom Plate)



*

ROTH ENVIRONMENTAL CONSULTANTS, INC.
PHOTOGRAPHIC RECORD

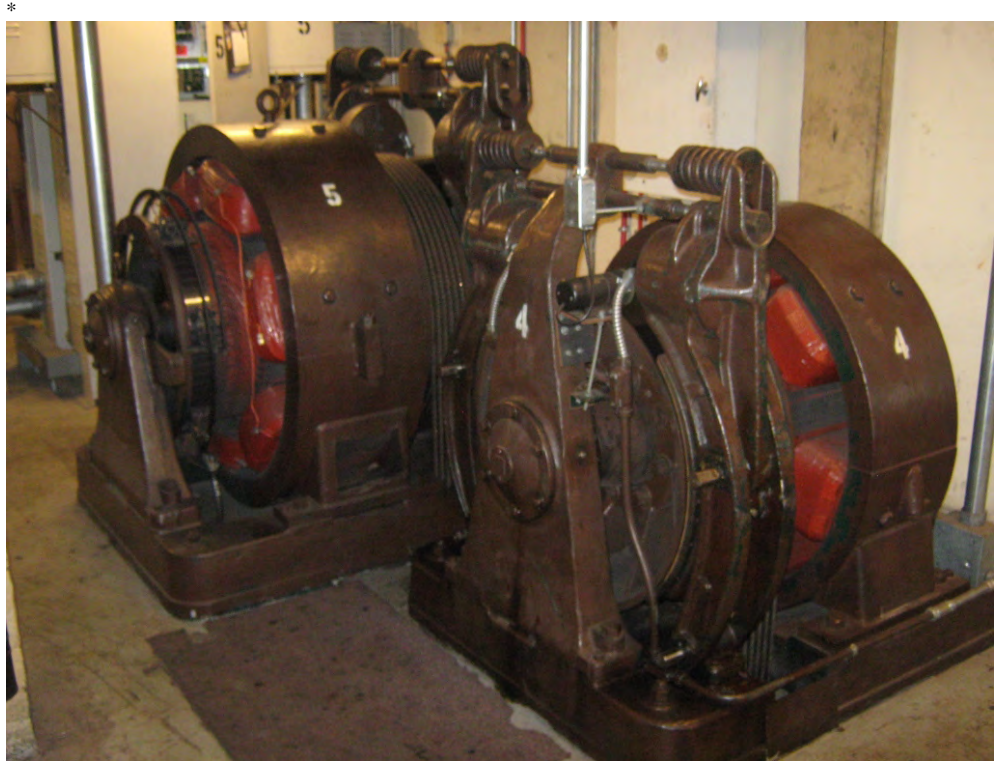
Client: Roth Environmental
Camera Make: Sony

Roth PO # 078-PI-2015.001

Site Address: 915 North Grand
Site Location: St. Louis MO

Photographer: M Liechti
Date: 9/17/15
Direction:
Comments: Elevator
Machine Room
Penthouse Cars
1-6

Brown Metal
Brakes
(Brakes
pictured on the
left side of Car
4)



Photographer: M Liechti
Date: 9/17/15
Direction:
Comments: Elevator
Machine Room
Penthouse Cars
1-6

Beige Metal
Ceiling Beam



ROTH ENVIRONMENTAL CONSULTANTS, INC.
PHOTOGRAPHIC RECORD

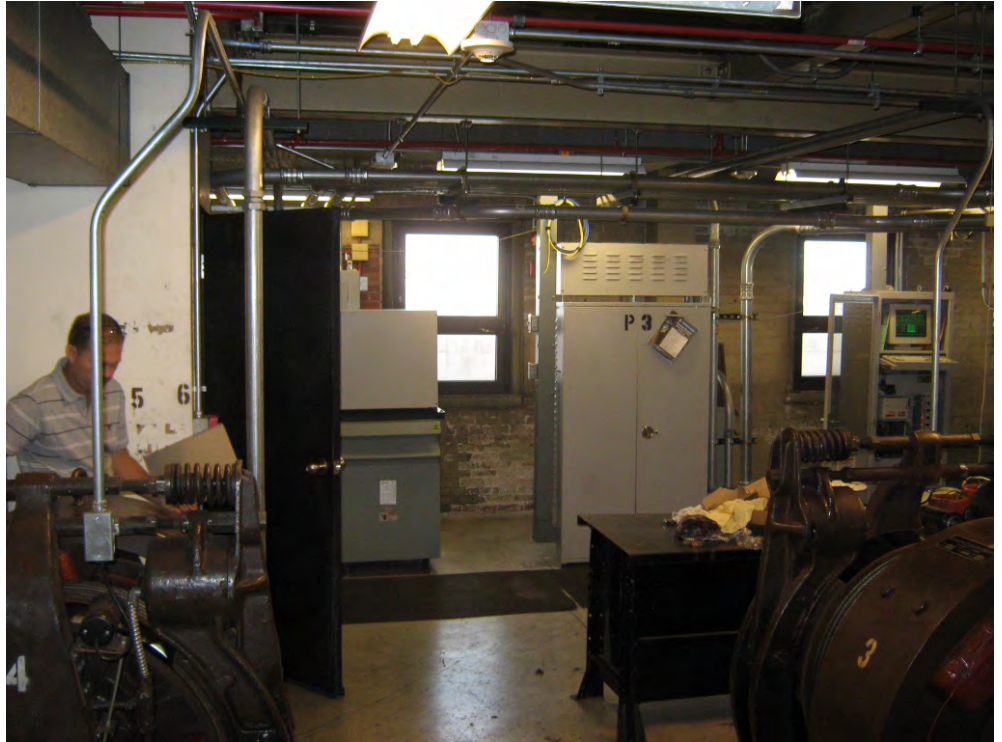
Client: Roth Environmental
Camera Make: Sony

Roth PO # 078-PI-2015.001

Site Address: 915 North Grand
Site Location: St. Louis MO

Photographer: M Liechti
Date: 9/17/15
Direction:
Comments: Elevator
Machine Room
Penthouse Cars
1-6

Gray & Beige
Wood Window
Trim
(Shown in rear
of photo)



Photographer: M Liechti
Date: 9/17/15
Direction:
Comments: Passenger
Elevator Bank
B Cars 7-9

Orange Metal
Divider Beam



**ROTH ENVIRONMENTAL CONSULTANTS, INC.
PHOTOGRAPHIC RECORD**

Client: Roth Environmental
Camera Make: Sony

Roth PO # 078-PI-2015.001

Site Address: 915 North Grand
Site Location: St. Louis MO

Photographer: M Liechti
Date: 9/17/15
Direction:
Comments: Cart Lift 5 and
6 Equipment
Room
Penthouse

Blue Metal
Motor Housing



Photographer:
Date:
Direction:
Comments: