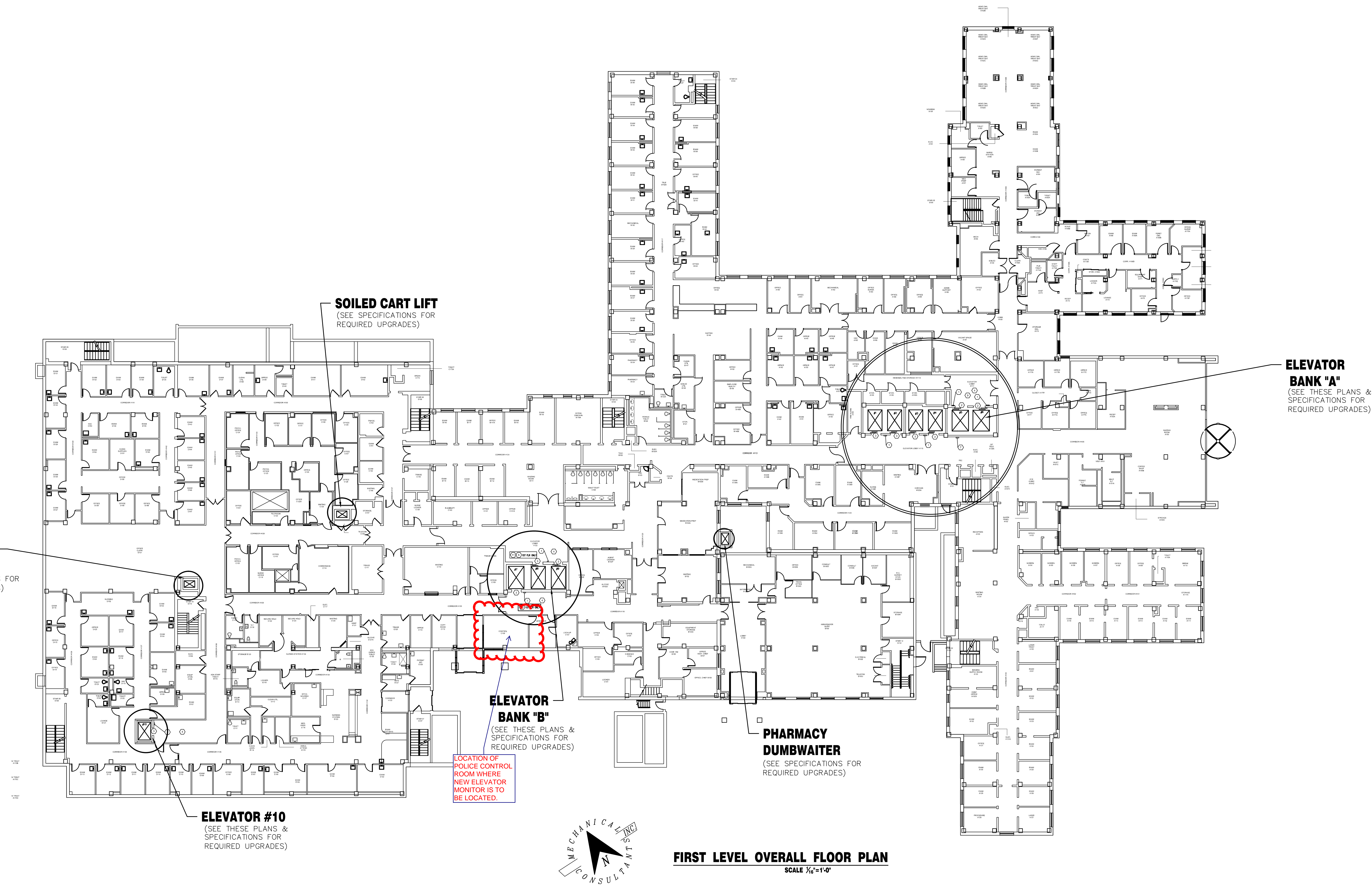


three inches = one foot  
one and one half inches = one foot  
one inch = one foot  
three quarters inch = one foot  
one half inch = one foot  
three eighths inch = one foot  
one quarter inch = one foot  
one eighth inch = one foot



CONSULTANTS:		ARCHITECT/ENGINEERS:		Drawing Title		Project Title		Project Number		Department of Veterans Affairs	
VAN DEUSEN and ASSOCIATES, VERTICAL TRANSPORTATION CONSULTANTS		DUDLEY WILLIAMS and ASSOCIATES, PA JOHNSON ENGINEERING		FIRST LEVEL OVERALL FLOOR PLAN		REPLACE MECHANICAL CONTROLS and UPGRADE CABS, MAIN ELEVATORS		657-15-200JC		Medical Center	
				Approved Project Director		Location		Building Number		John Cochran	
						VAMC - ST. LOUIS, MISSOURI - JC		01		Division	
Revisions:						Date		Checked		Drawn	
						OCTOBER 25, 2016		BP		JM	
Date								100% REVIEW SET		Dwg. 3 of 23	
								1-GI 003		Department of Veterans Affairs	