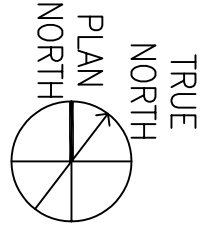


- NOTES
1. LOCATE AND PROTECT ALL UTILITIES DURING CONSTRUCTION

L1 SURFACE DEMOLITION PLAN
SCALE: 1" = 10'

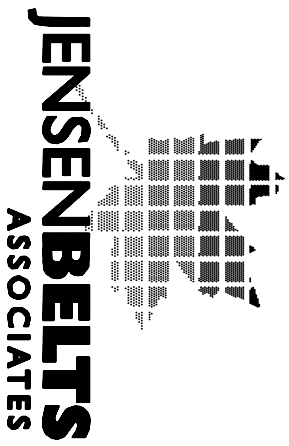
0' 5' 10' 15' 20' 25' 30'



FINAL SET


METRIC CONVERSION FACTOR:
1" = 25.4mm
1'-0" = 304.8mm

REVISIONS	DATE




JENSENBELTS ASSOCIATES

Site Planning / Landscape Architecture
405 Main Street, Boise, Idaho 83702
Ph: (208) 346-7776, Fx: (208) 346-7779



ZGA ARCHITECTS & PLANNERS, CHARTERED

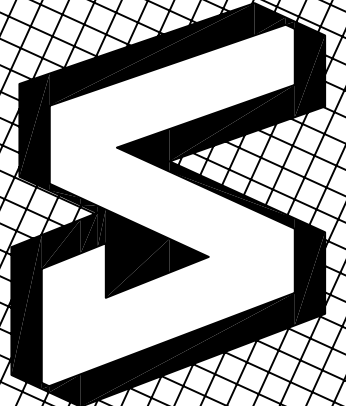


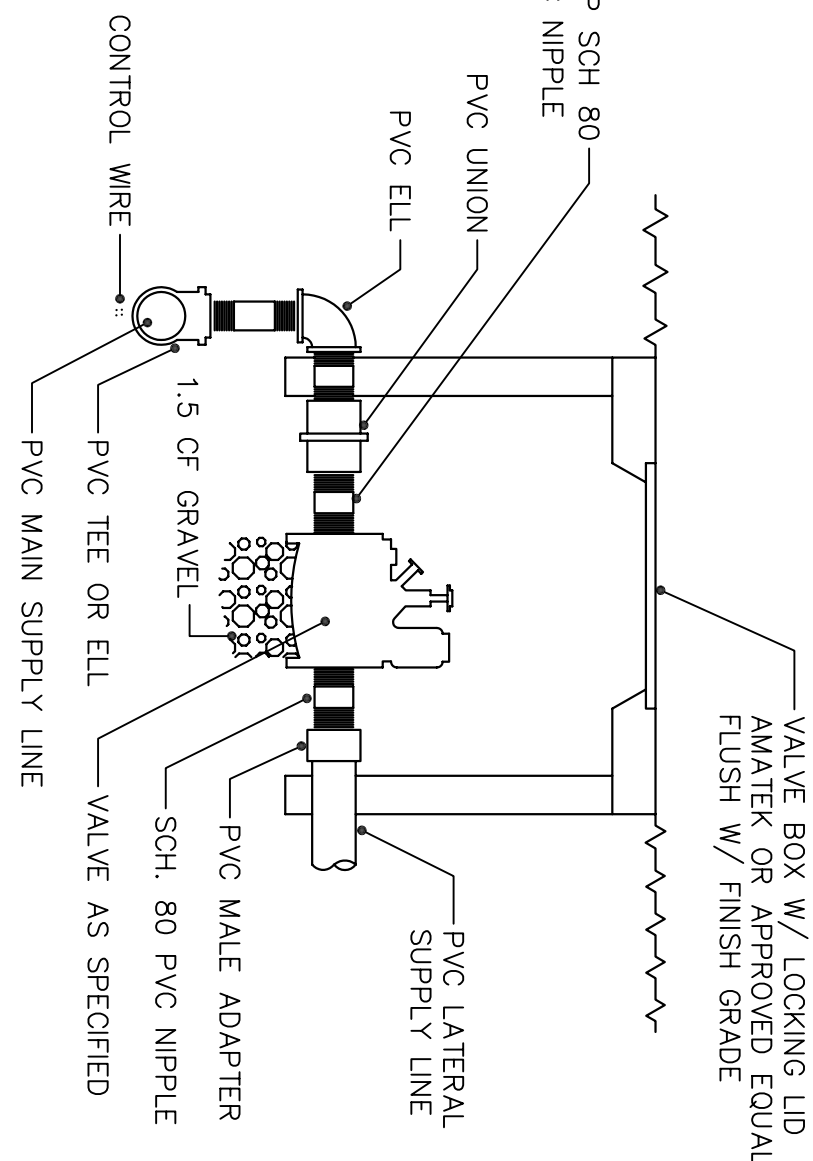
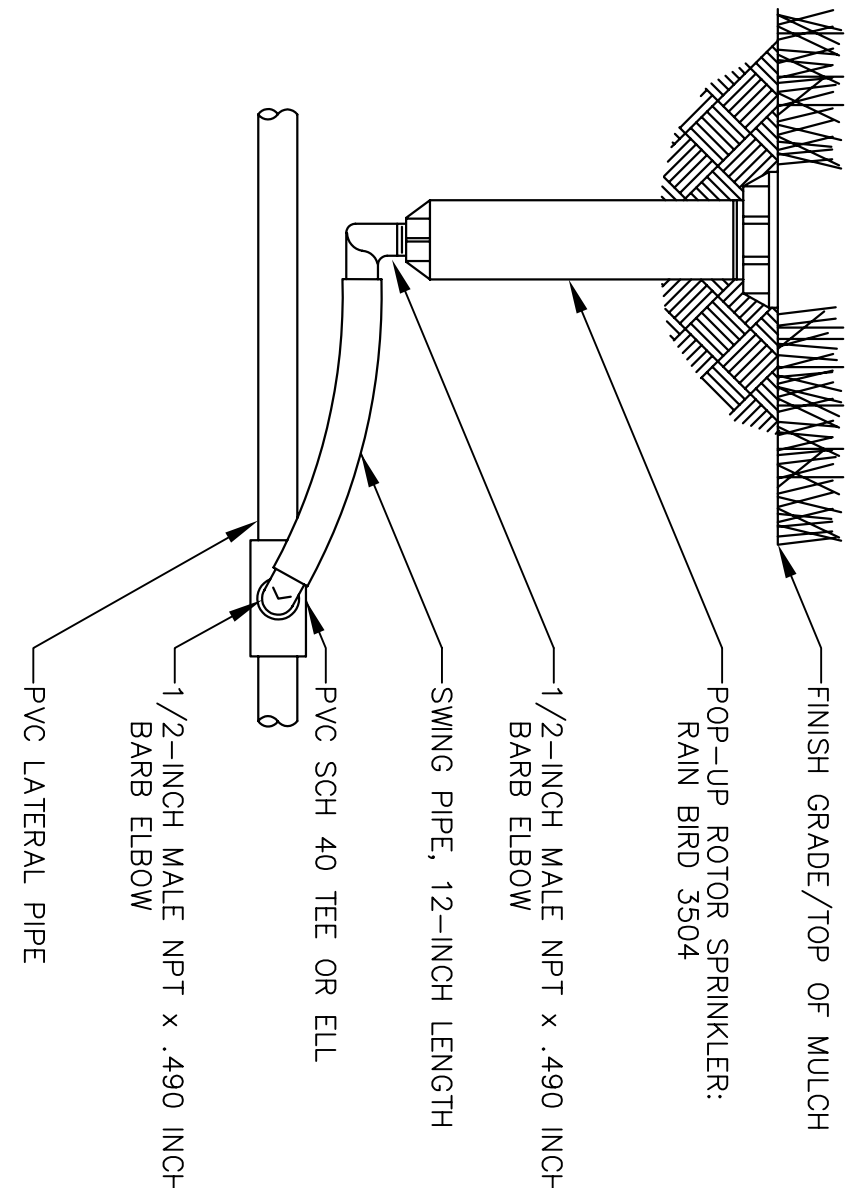
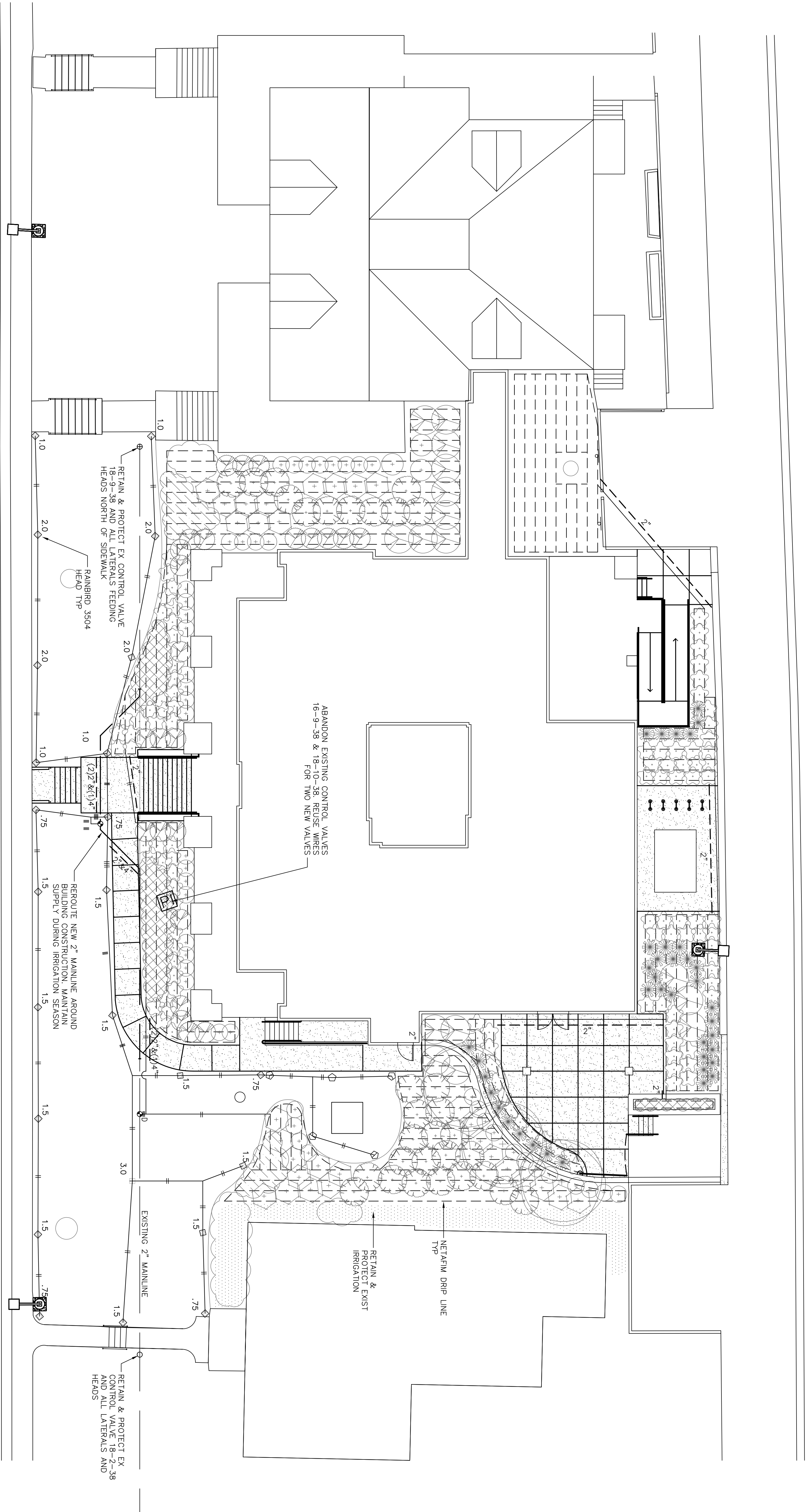
408 E. Parkcenter Blvd., Suite 205 | Boise, Idaho 83706 | t: (208) 346-8972 | f: (208) 343-7162 | www.zga.com

CAD FILE NAME:
531CS102_L1.dwg

XREF FILE NAME:
Xlibord.dwg

531CS102SITE.dwg

DRAWING TITLE			PROJECT TITLE			DATE
SURFACE DEMOLITION PLAN			VA RESIDENTIAL MENTAL HEALTH FACILITY VA-260-11-RP-0663			FEB 3, 2012
APPROVED: CHIEF OF FACILITY MANAGEMENT SERVICE			BUILDING NUMBER	CHECKED	DRAWN	PROJECT NO. 531-CS1-102
APPROVED: MEDICAL CENTER DIRECTOR			123			DRAWING NO. L1
			LOCATION VAMC BOISE, IDAHO			DWG OF
						
						DEPARTMENT OF VETERANS AFFAIRS



LEGEND	
SYMBOL	DESCRIPTION

◇ +	RAINBRO 3504 ROTOR HEAD, NOZZLE AND PATTERN PER PLAN
⊗ ⊕	RAINBRO 3504+R13-18 ROTOR HEAD WITH ROTARY NOZZLE, PATTERN PER PLAN
⊗	RAINBRO 150-PESP-PRS-D REMOTE CONTROL VALVE
⊙	RAINBRO RBY-2005MAX DRIP CONTROL ZONE KIT
---	NETAFIM TECHLINE CV DRIPPERLINE WITH .6 GPH EMITTERS SPACED 24"
---	CLASS 200 PVC LATERAL LINE, SIZE PER NOTE BELOW
---	2" CLASS 200 PVC MAIN LINE
---	CLASS 200 PVC SLEEVE, SIZE PER PLAN

NOTES	
1. SIZE LATERAL LINES PER PLAN AND BELOW.	
3/4"	0-10.0 GPM
1-1/4	10.1-25.0
1-1/2	16.1-28.0
2	28.1-36.0
	36.1-55.0

IRRIGATION PLAN

SCALE: 1" = 10'

0' 5' 10' 15' 20' 25' 30'

TRUE NORTH
PLAN NORTH

FINAL SET

METRIC CONVERSION FACTOR:
1" = 25.4mm
1'-0" = 304.8mm

REVISIONS

DATE

JENSENBELTS ASSOCIATES

Site Planning / Landscape Architecture
408 E. Parkcenter Blvd., Suite 205
Boise, Idaho 83706
PH: (208) 345-7162 FX: (208) 345-7170

Professional Seal

Professional Engineer
Boise, Idaho
No. 12345
Exp. 12/31/2025

ZGA ARCHITECTS & PLANNERS, CHARTERED

408 E. Parkcenter Blvd., Suite 205 | Boise, Idaho 83706 | P: (208) 345-8872 | F: (208) 345-7162 | www.zga.com

DWG FILE NAME:
5310SI102.L22.dwg
XREF FILE NAME:
\\labord.dwg
5310SI102SITE.dwg
5310SI102.L21.dwg

IRRIATION PLAN

APPROVED: CHIEF OF FACILITY MANAGEMENT SERVICE

APPROVED: MEDICAL CENTER DIRECTOR

PROJECT TITLE:
VA RESIDENTIAL MENTAL HEALTH FACILITY
VA-260-11-RP-0663

BUILDING NUMBER
123

CHECKED
DRAWN

LOCATION
VAMC BOISE, IDAHO

DWG
OF

DATE
FEB 3, 2012

PROJECT NO.
331-CS-102

DRAWING NO.
L2.2

DEPARTMENT OF VETERANS AFFAIRS

Logo