

WALL FINISH KEY

P1, P2, P3, P4 (PAINT)

WP (WOOD PANEL)

VWC1, VWC2 (VINYL
WALLCOVERING)

NOTE:
REFERENCE FINISH SCHEDULE
FOR ALL ROOMS NOT SHOWING
WALL FINISHES

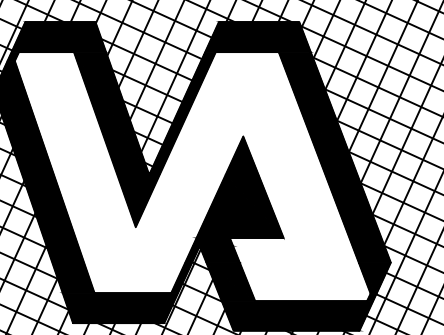


NORTH

WALL FINISH PLAN
FIRST FLOOR
SCALE: $1/4" = 1'-0"$

FINAL SET

METRIC CONVERSION FACTOR:
1" = 25.4mm
1'-0" = 304.8mm



DEPARTMENT OF VETERANS AFFAIRS

REVISIONS	DATE
-----------	------

Cornerstone Design
healthy & high performance interiors

1005 E. Park Blvd., Boise, Id 83712
P:208.384.1422 F:208-368.6311
www.cornerstoneinteriordesign.com

ZGA ARCHITECTS & PLANNERS, CHARTERED

408 E. Parkcenter Blvd., Suite 205 Boise, Idaho 83706 t: (208) 345.8872 f: (208) 343.7162 www.zga.com

CAD FILE NAME:

XREF FILE NAME:

DRAWING TITLE

WALL FINISH PLAN
FIRST FLOOR

APPROVED: CHIEF OF FACILITY MANAGEMENT SERVICE

APPROVED: MEDICAL CENTER DIRECTOR

PROJECT TITLE	VA RESIDENTIAL MENTAL HEALTH FACILITY VA-260-11-RP-0663
---------------	---

BUILDING NUMBER	CHECKED	DRAWN
123		

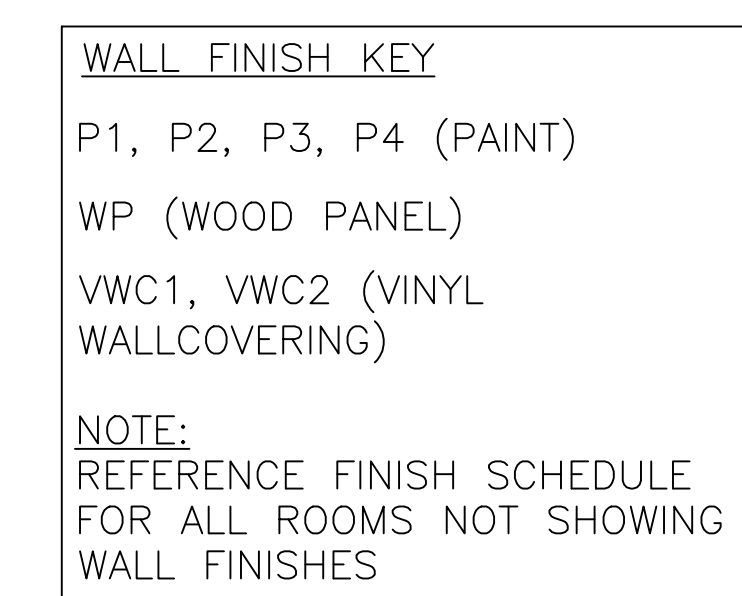
LOCATION	VAMC BOISE, IDAHO
----------	-------------------

DATE
FEB 3, 2012

PROJECT NO.
531-CSE-102

DRAWING NO.
LD 1 0

1D 1.0



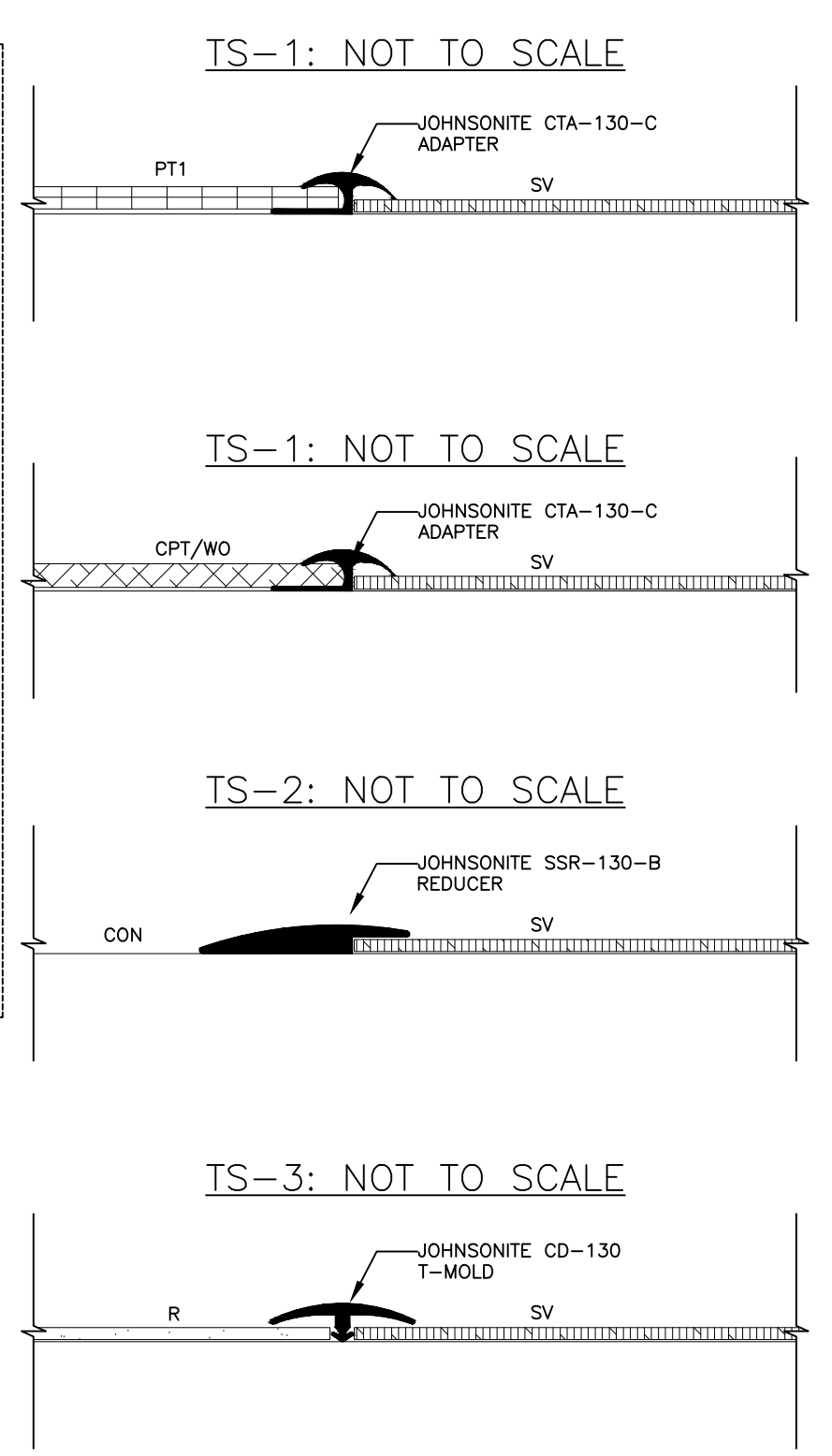
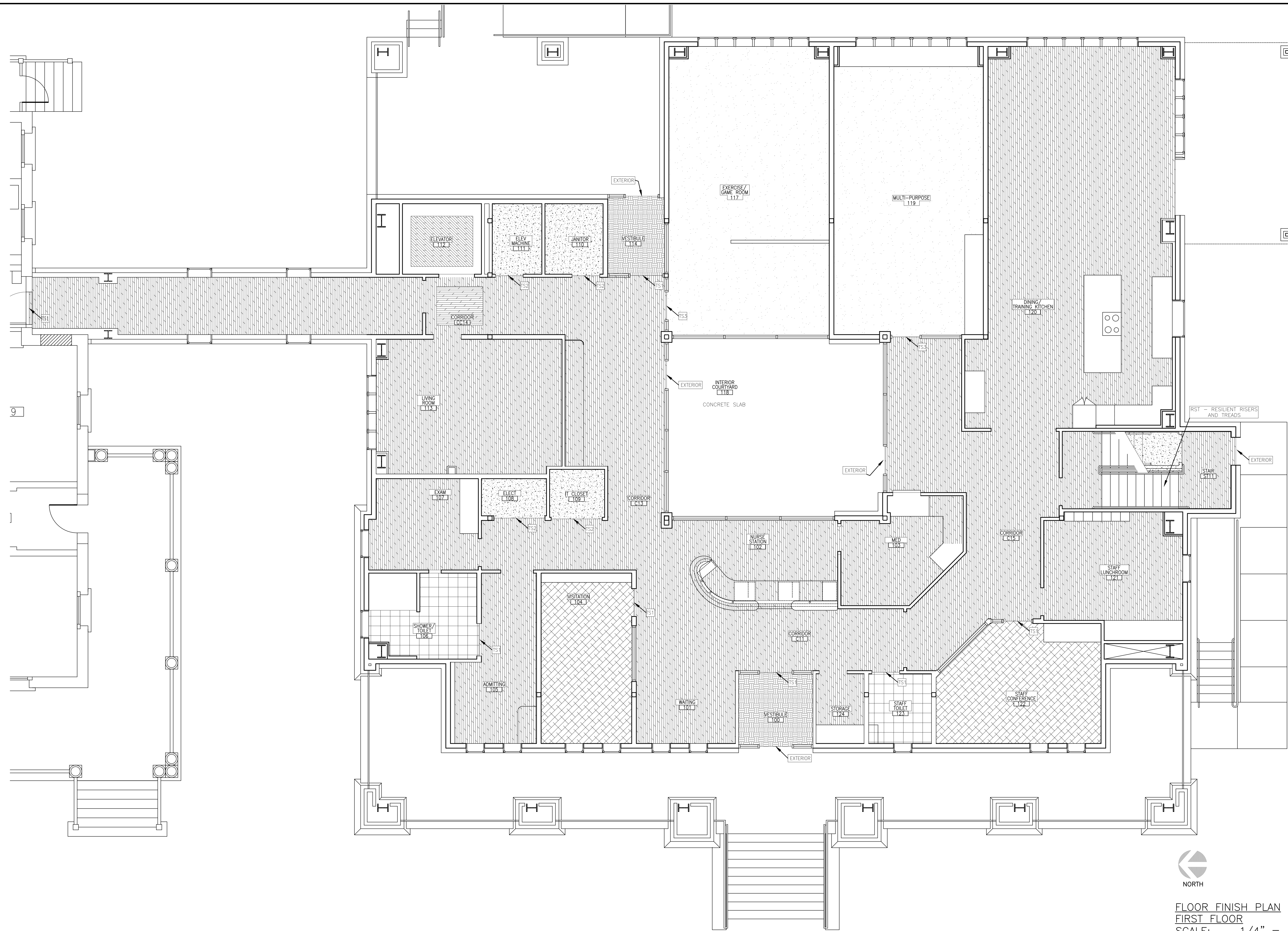
FINAL SET

METRIC CONVERSION FACTOR:
1" = 25.4mm
1'-0" = 304.8mm



DEPARTMENT OF VETERANS AFFAIRS

		 health & high performance buildings™		 ZGA ARCHITECTS & PLANNERS, CHARTERED		CAD FILE NAME: XREF FILE NAME:		DRAWING TITLE WALL FINISH PLAN SECOND FLOOR		PROJECT TITLE VA RESIDENTIAL MENTAL HEALTH FACILITY VA-260-11-RP-0663		DATE FEB 3, 2012		 DEPARTMENT OF VETERANS AFFAIRS	
		1005 E. Park Blvd., Boise, Id 83712 P:208.364.1422 F:208-368.6311 www.comerstoneinteriordesign.com		408 E. Parkcenter Blvd., Suite 205 Boise, Idaho 83706 t: (208) 345.8872 f: (208) 343.7162 www.zga.com				APPROVED: CHIEF OF FACILITY MANAGEMENT SERVICE		BUILDING NUMBER 123		CHECKED		DRAWN	
REVISIONS:								APPROVED: MEDICAL CENTER DIRECTOR		LOCATION VAMC BOISE, IDAHO		DRAWING NO. ID1.1		DWS OF	



FLOOR FINISH KEY

- CON (SEALED CONCRETE)
- CPT (CARPET TILE)
- PT1 (PORCELAIN TILE)
- R (RUBBER TILE)
- SV (SHEET VINYL)
- WO (WALK OFF CARPET TILE)

NOTE:

- SV (SHEET VINYL) CHANGES IN DIRECTION IN MULTIPLE LOCATIONS; DIRECTION OF GRAIN ON PLAN IS DESIRED DIRECTION OF GRAIN IN FLOOR. ALL SV, REGARDLESS OF DIRECTION, SHALL BE SAME FLOORING PRODUCT.
- TS (TRANSITION STRIP) LOCATIONS AS NOTED. REFER TO KEY FOR GRAPHIC DEPICTIONS AND FINISH SCHEDULE FOR SPECS.
- SHOWER PANS TO BE SOLID SURFACE.
- REFERENCE FINISH SCHEDULE FOR SPECS.



FLOOR FINISH PLAN
FIRST FLOOR
SCALE: 1/4" = 1'-0"

FINAL SET
METRIC CONVERSION FACTOR:
1" = 25.4mm
1'-0" = 304.8mm

REVISIONS	DATE

Comerstone Design
healthy & high performance solutions™

1005 E. Park Blvd., Boise, Id 83712
P:208.394.1422 F:208-968.6311
www.comerstoneinteriordesign.com

ZGA ARCHITECTS & PLANNERS, CHARTERED

408 E. Parkcenter Blvd., Suite 205 | Boise, Idaho 83706 | t: (208) 345.8872 | f: (208) 343.7162 | www.zga.com

CAD FILE NAME:
XREF FILE NAME:

DRAWING TITLE
**FLOOR FINISH PLAN
FIRST FLOOR**

APPROVED: CHIEF OF FACILITY MANAGEMENT SERVICE
APPROVED: MEDICAL CENTER DIRECTOR

PROJECT TITLE
VA RESIDENTIAL MENTAL
HEALTH FACILITY
VA-260-11-RP-0663

BUILDING NUMBER
123

LOCATION
VAMC BOISE, IDAHO

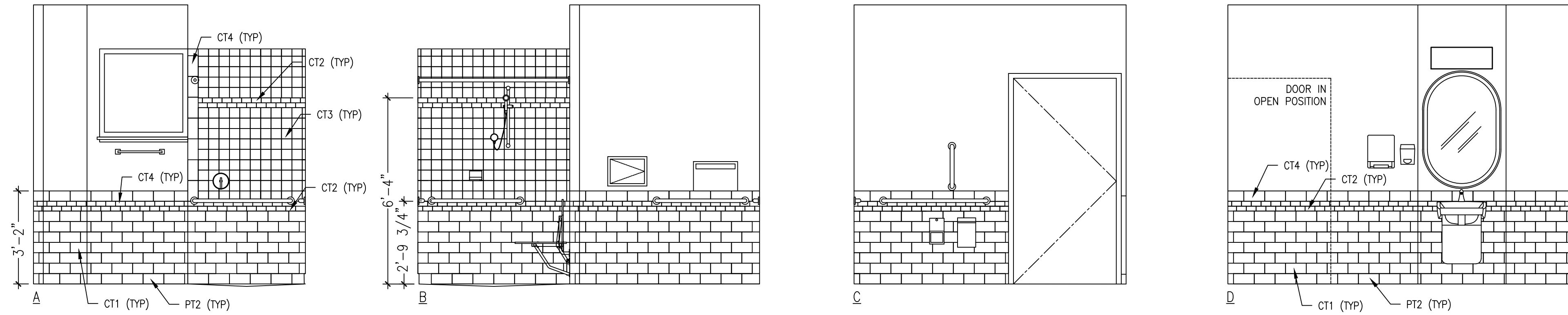
DATE
FEB 3, 2012

PROJECT NO.
531-CSI-102

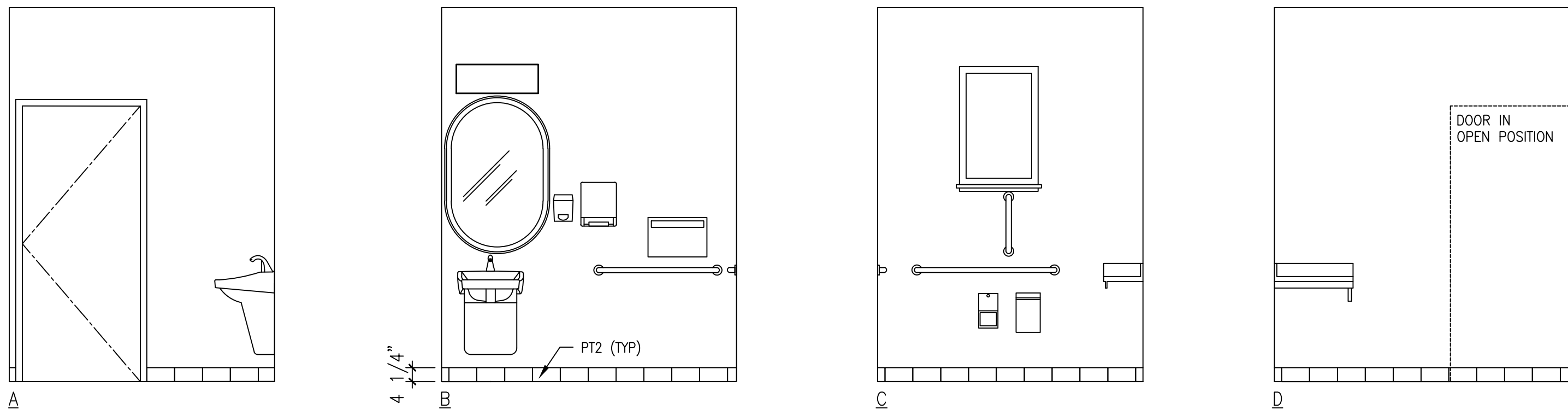
DRAWING NO.
ID2.0

DWG OF

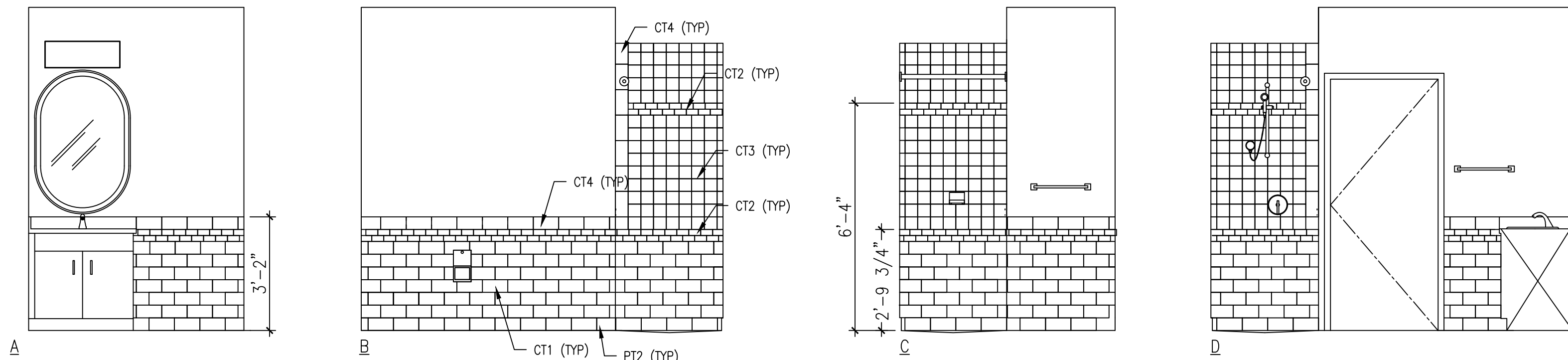




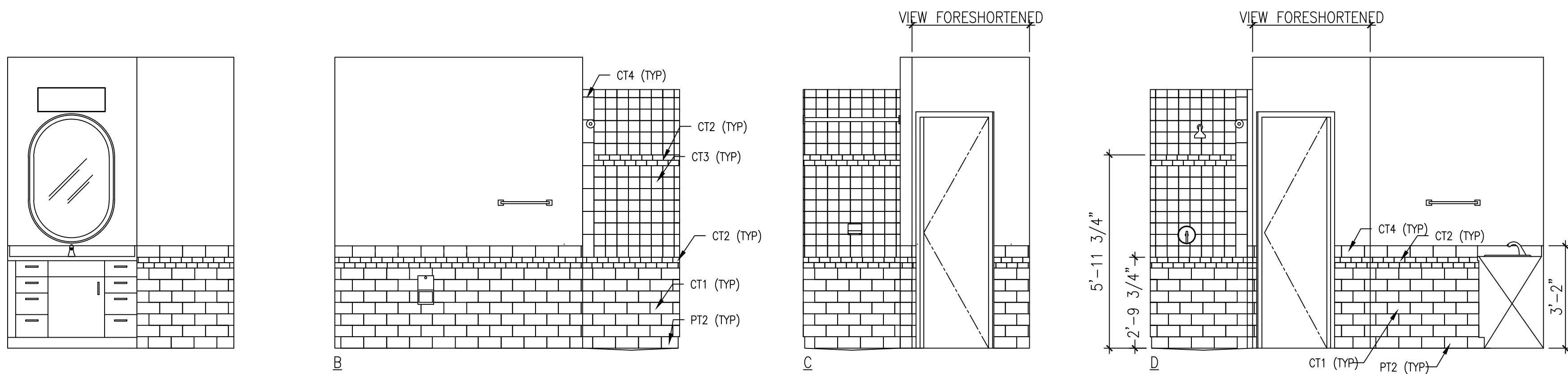
29 SHOWER/TOILET 106
SCALE: 3/8"=1'-0"



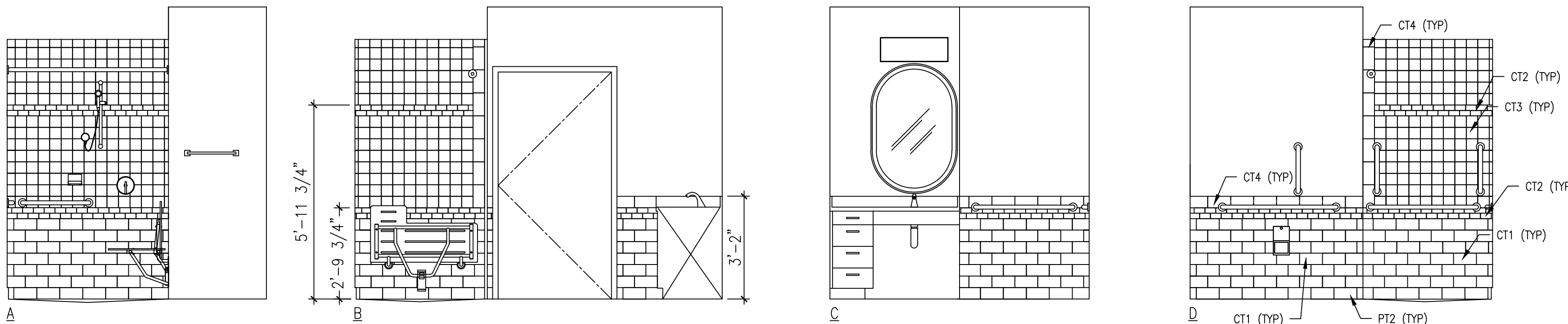
30 STAFF TOILET-123
SCALE: 3/8"=1'-0"



26 TYPICAL PRIVATE RESTROOM-214A SHOWN
SCALE: 3/8"=1'-0"



28 TYPICAL SEMI-PRIVATE RESTROOM-224A SHOWN
SCALE: 3/8"=1'-0"



27 TYPICAL PRIVATE (BARIATRIC) RESTROOM-225A SHOWN
SCALE: 3/8"=1'-0"

NOTE:
CT* (CERAMIC TILE WAINSCOT) AND
OTHER WALL MOUNTED FIXTURES
SHOWN FOR COORDINATION ONLY.
VERIFY ALL MEASUREMENTS ONSITE.

FIXTURES SHOWN ABOVE TILE
WAINSCOT TO REMAIN ABOVE TILE
WAINSCOT. REFERENCE A7.0 FOR
FIXTURE TAGS AND MOUNTING
HEIGHTS.

REFERENCE FINISH SCHEDULE FOR
SPECS.

FINAL SET

METRIC CONVERSION FACTOR:
1" = 25.4mm
1'-0" = 304.8mm

REVISIONS	DATE



ZGA ARCHITECTS & PLANNERS, CHARTERED

408 E. Parkcenter Blvd., Suite 205 | Boise, Idaho 83706 | t: (208) 345.8872 | f: (208) 343.7162 | www.zga.com

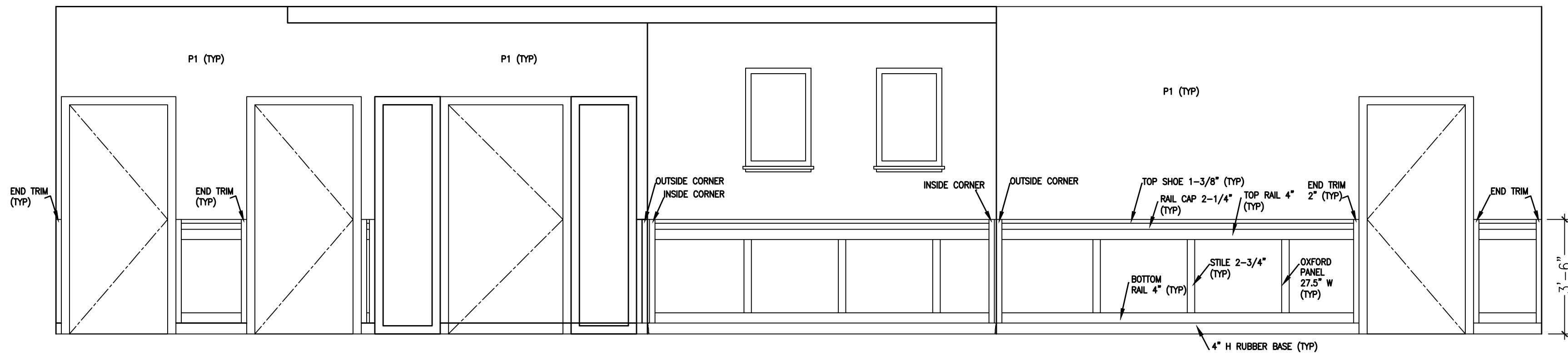
CAD FILE NAME:
XREF FILE NAME:

DRAWING TITLE
RESTROOM TILE LAYOUTS
APPROVED: CHIEF OF FACILITY MANAGEMENT SERVICE
APPROVED: MEDICAL CENTER DIRECTOR

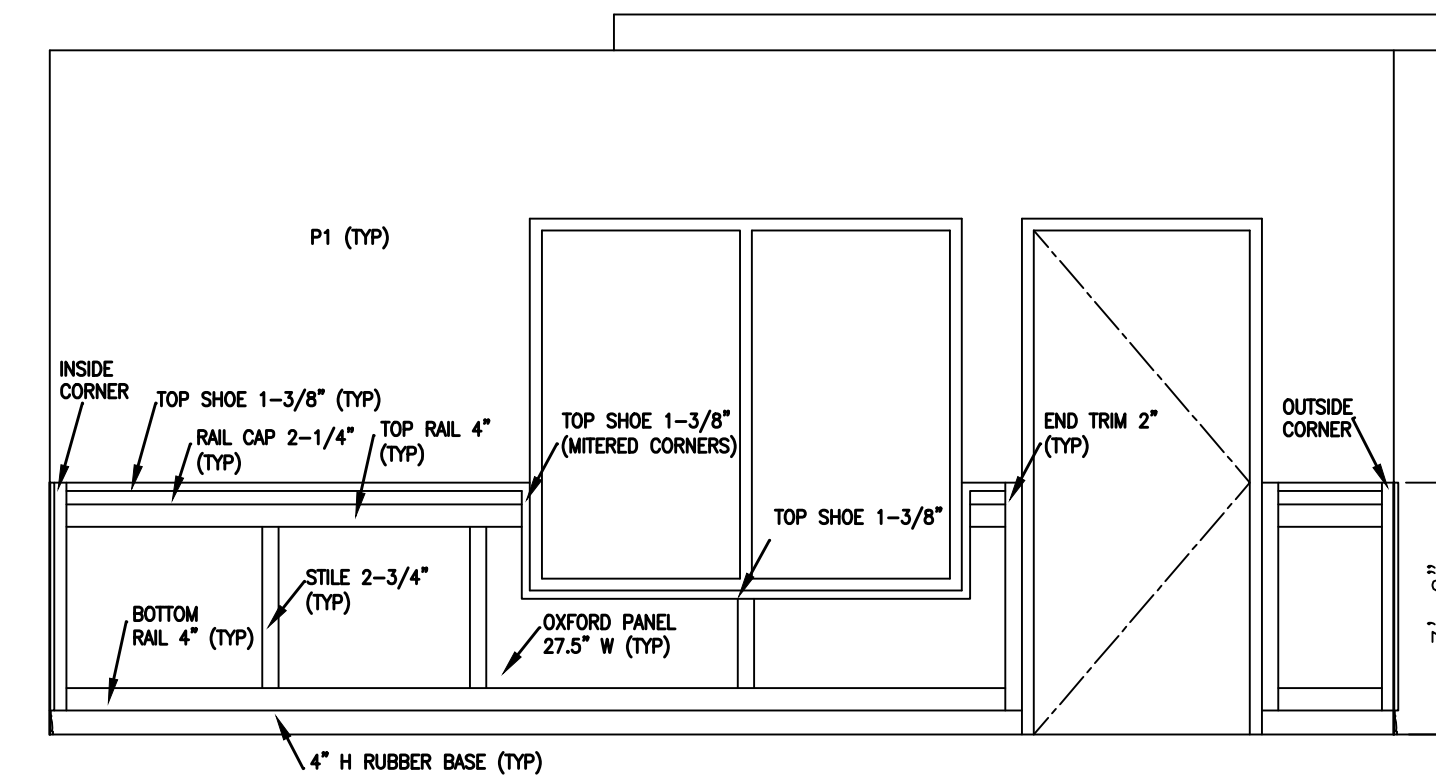
PROJECT TITLE
VA RESIDENTIAL MENTAL HEALTH FACILITY
VA-260-11-RP-0663
BUILDING NUMBER
123
LOCATION
VAMC BOISE, IDAHO

DATE
FEB 3, 2012
PROJECT NO.
531-CSI-102
DRAWING NO.
ID7.0
DWG OF

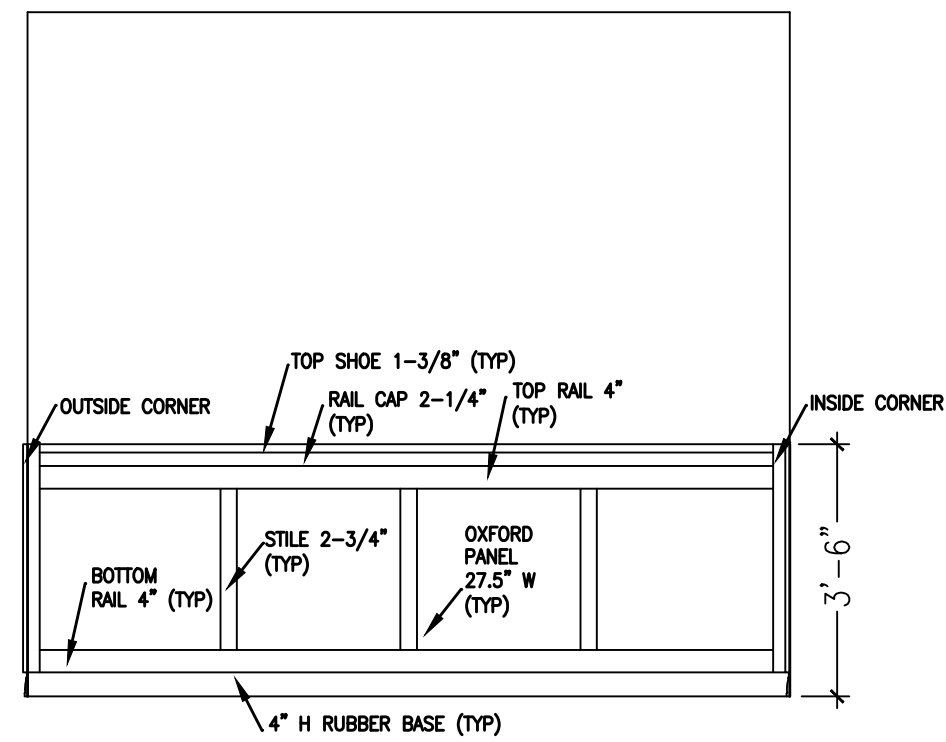




11 WAITING 101
SCALE: 3/8"=1'-0"



12 WAITING 101
SCALE: 3/8"=1'-0"



13 WAITING 101
SCALE: 3/8"=1'-0"

NOTE:
WP (WAINSCOT PANELING) SHOWN FOR
PATTERN AND COORDINATION ONLY.
VERIFY ALL MEASUREMENTS ONSITE.

WP SHOWN IS ALTERNATE BID. BASE
BID SHALL BE P1 WITH RB BASE.

REFERENCE FINISH SCHEDULE FOR
SPECS.

FINAL SET
METRIC CONVERSION FACTOR:
1" = 25.4mm
1'-0" = 304.8mm

REVISIONS	DATE



ZGA ARCHITECTS & PLANNERS, CHARTERED

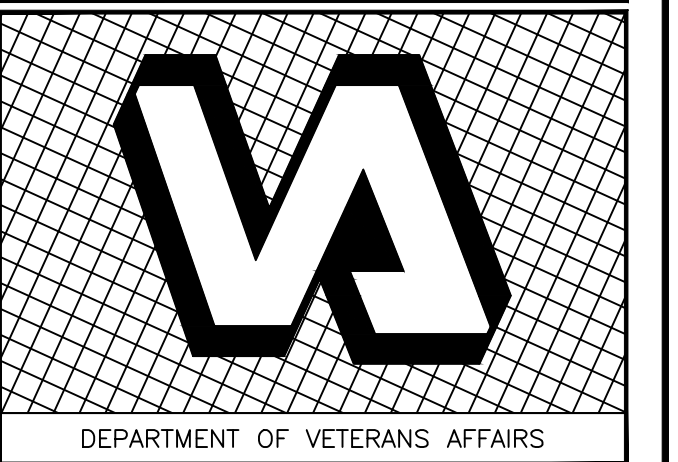
408 E. Parkcenter Blvd., Suite 205 | Boise, Idaho 83706 | t: (208) 345.8872 | f: (208) 343.7162 | www.zga.com

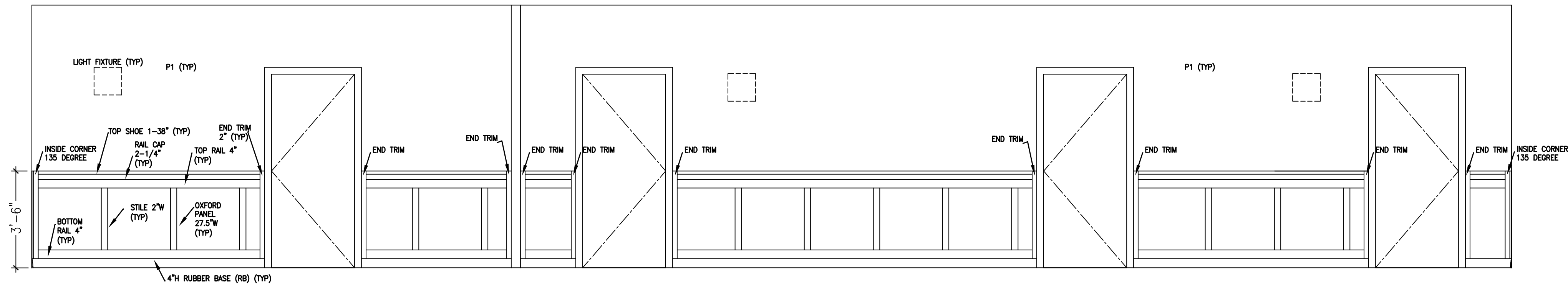
CAD FILE NAME:
XREF FILE NAME:

DRAWING TITLE
FIRST FLOOR WAITING ROOM ELEVATIONS
APPROVED: CHIEF OF FACILITY MANAGEMENT SERVICE
APPROVED: MEDICAL CENTER DIRECTOR

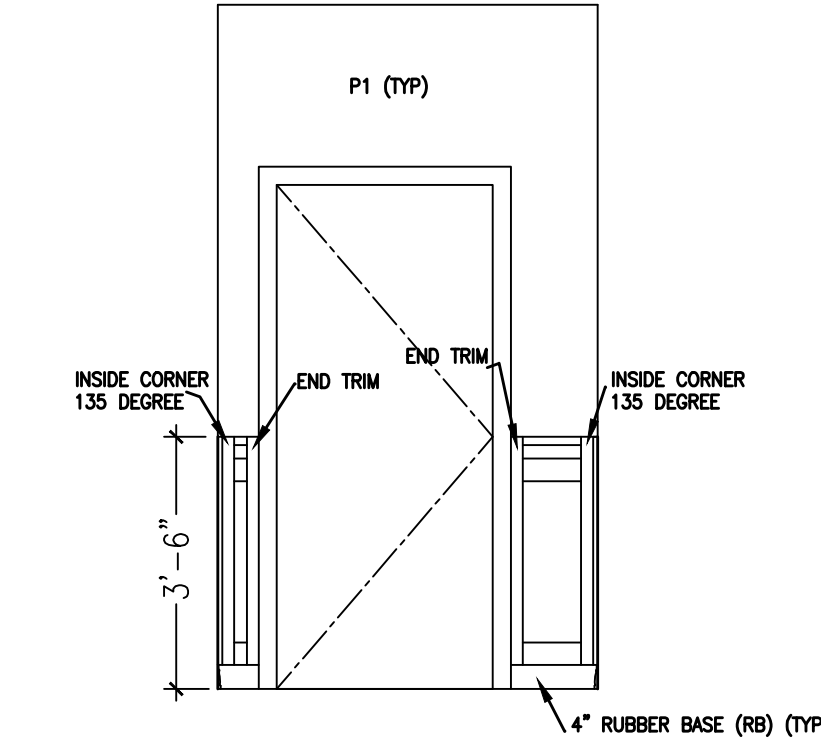
PROJECT TITLE
VA RESIDENTIAL MENTAL HEALTH FACILITY VA-260-11-RP-0663
BUILDING NUMBER
123
LOCATION
VAMC BOISE, IDAHO

DATE
FEB 3, 2012
PROJECT NO.
531-CSI-102
DRAWING NO.
ID7.1
DWG OF

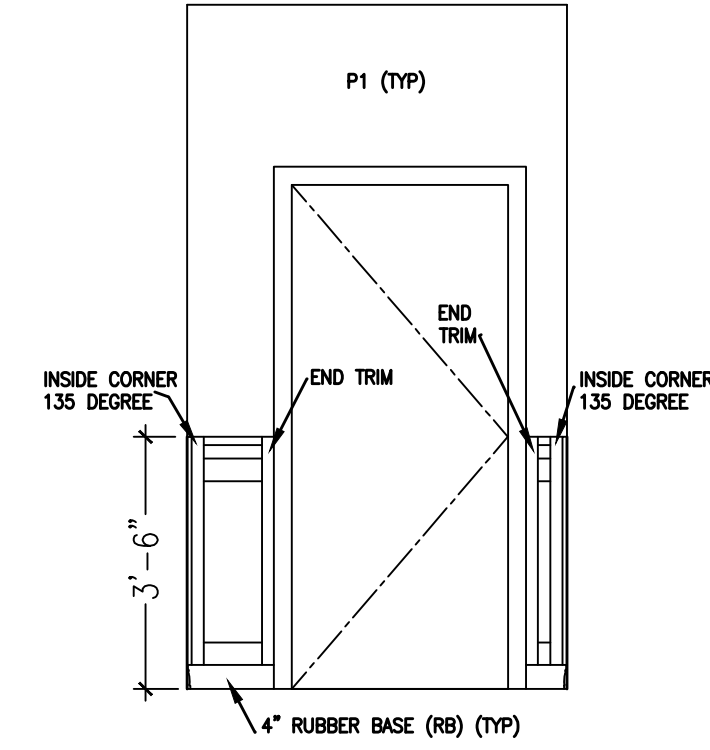




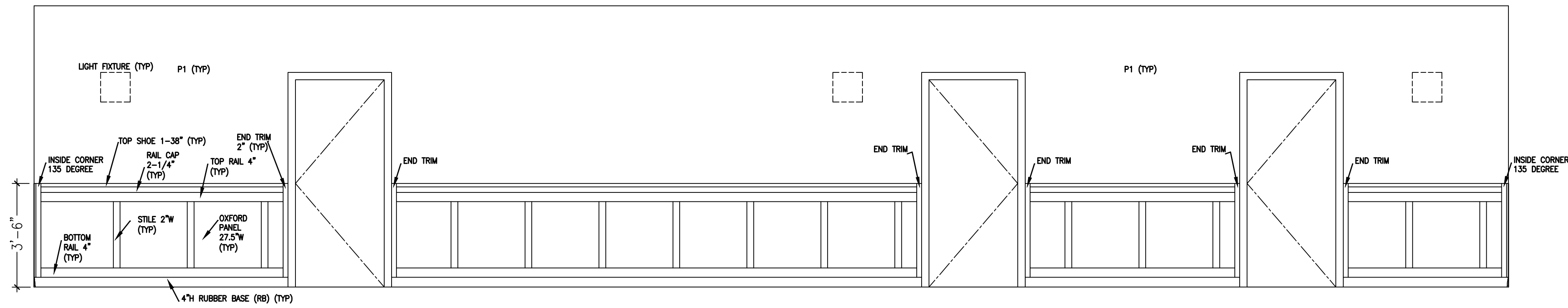
1 CORRIDOR C23
SCALE: 3/8"=1'-0"



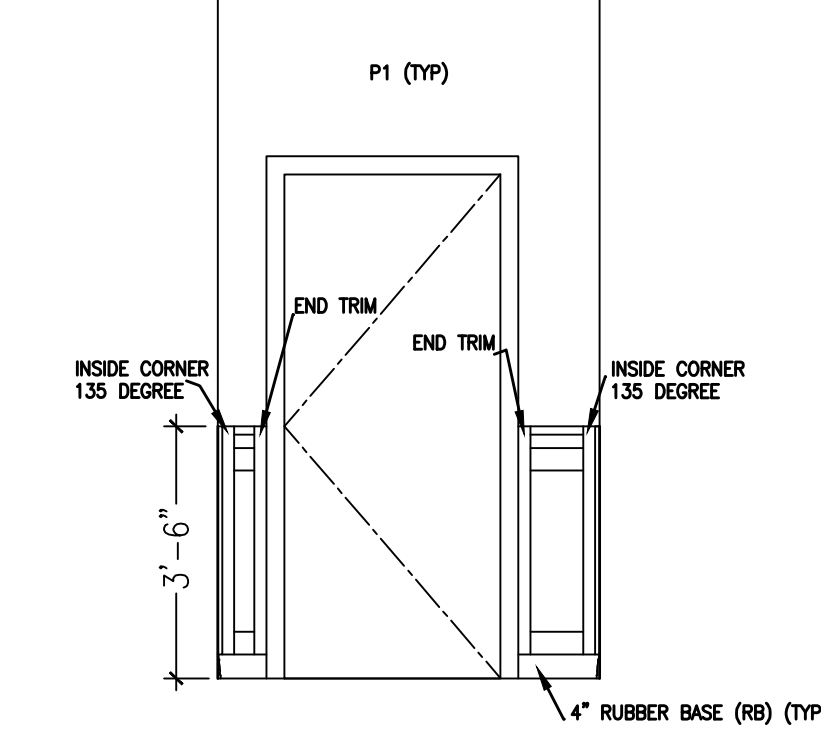
2 CORRIDOR C23
SCALE: 3/8"=1'-0"



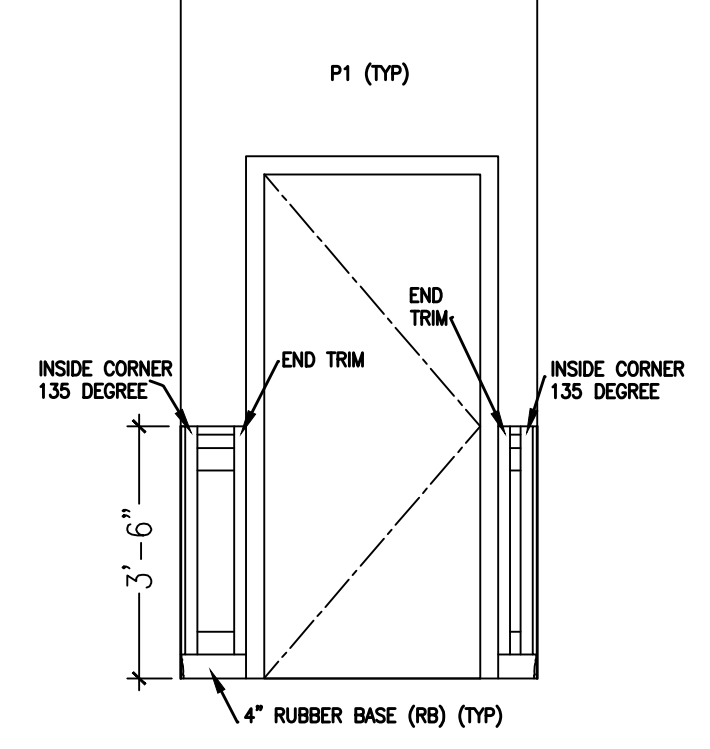
3 CORRIDOR C23
SCALE: 3/8"=1'-0"



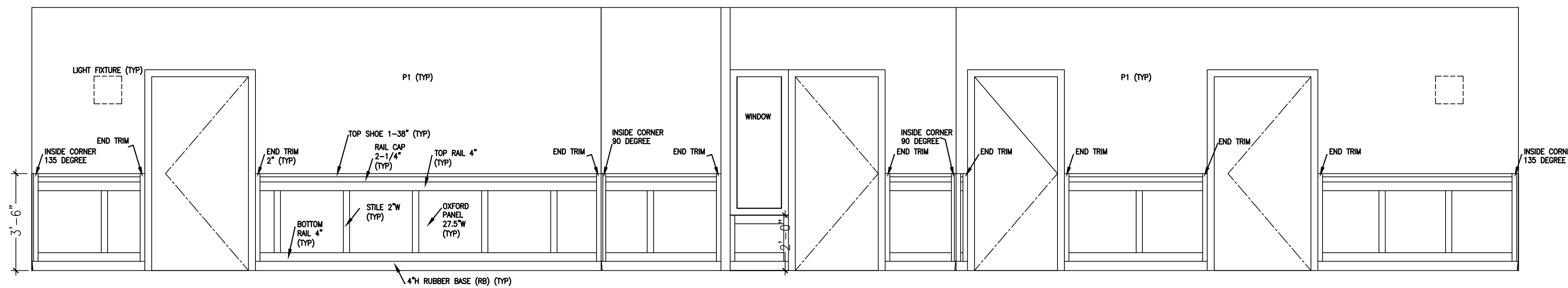
4 CORRIDOR C24
SCALE: 3/8"=1'-0"



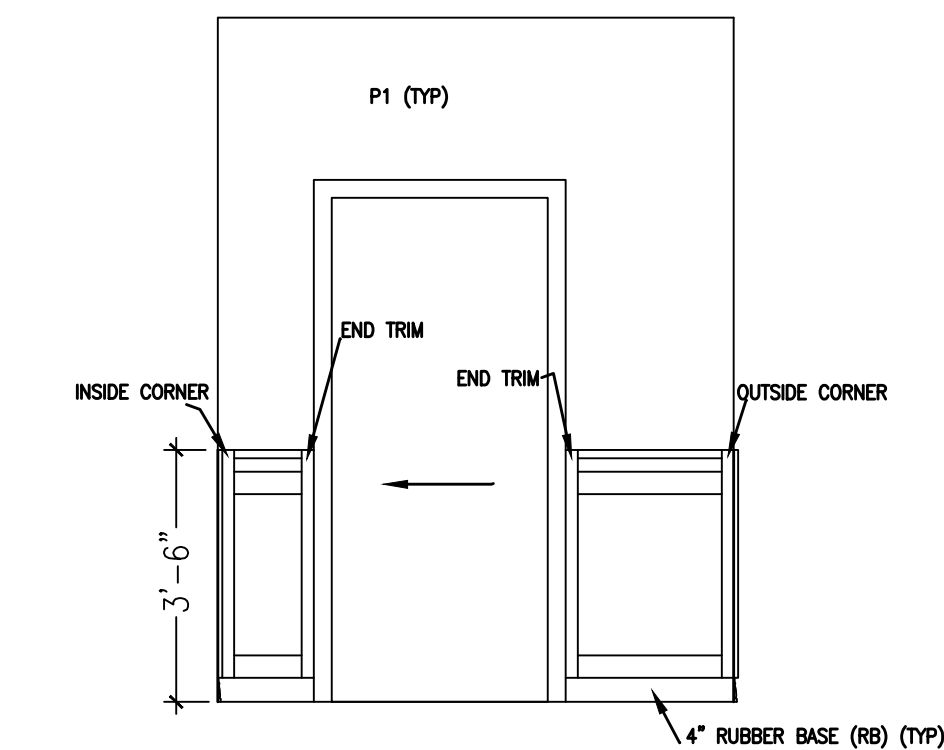
5 CORRIDOR C25
SCALE: 3/8"=1'-0"



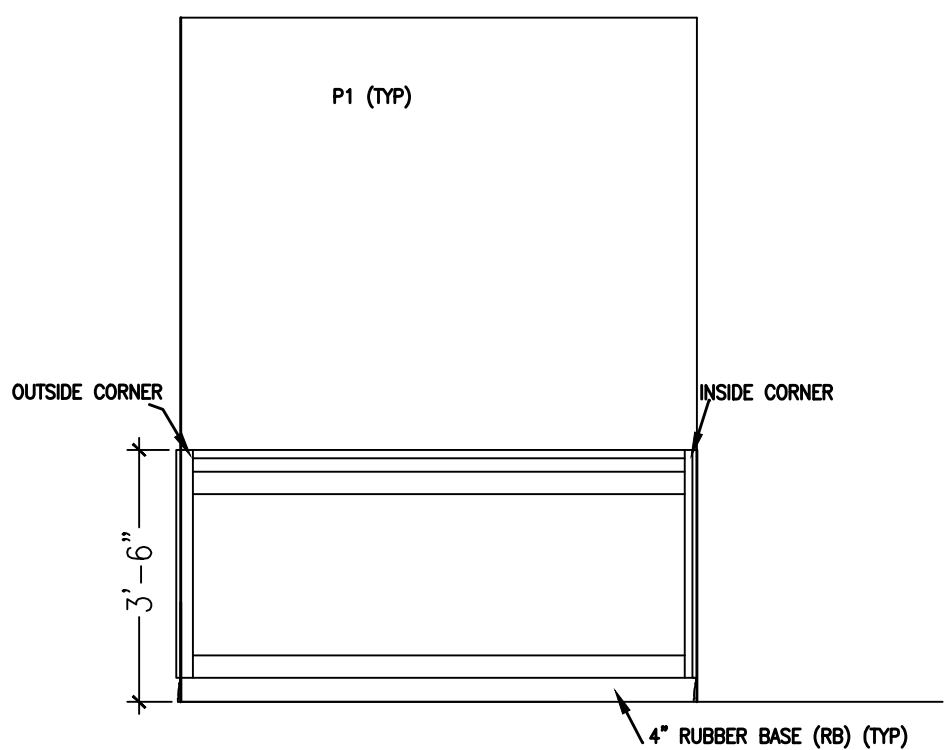
6 CORRIDOR C25
SCALE: 3/8"=1'-0"



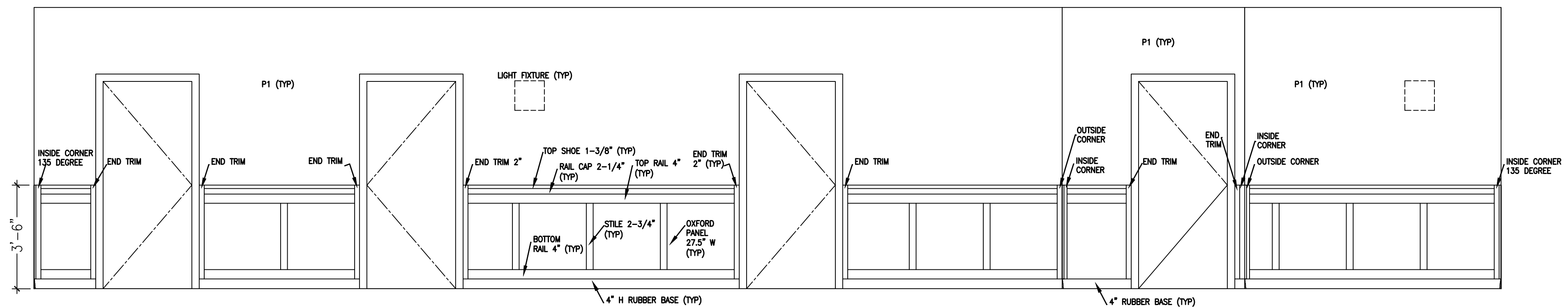
7 CORRIDOR C25
SCALE: 3/8"=1'-0"



8 CORRIDOR 22
SCALE: 3/8"=1'-0"



9 CORRIDOR 22
SCALE: 3/8"=1'-0"



10 CORRIDOR C22
SCALE: 3/8"=1'-0"

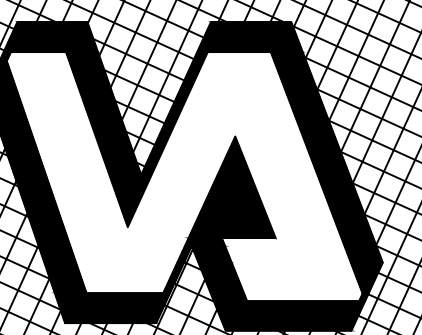
NOTE:
WP (WAINSCOT PANELING) SHOWN FOR
PATTERN AND COORDINATION ONLY.
VERIFY ALL MEASUREMENTS ONSITE.

WP SHOWN IS ALTERNATE BID. BASE
BID SHALL BE P1 WITH RB BASE.

REFERENCE FINISH SCHEDULE FOR
SPECS.

FINAL SET

METRIC CONVERSION FACTOR:
1" = 25.4mm
1'-0" = 304.8mm



DEPARTMENT OF VETERANS AFFAIRS

REVISIONS	DATE

Comerstone Design
health & high performance solutions™

1005 E. Park Blvd. Boise, Id 83702
P:208.384.1422 F:208-388.6311
www.comerstonedesign.com

ZGA ARCHITECTS & PLANNERS, CHARTERED

408 E. Parkcenter Blvd., Suite 205 | Boise, Idaho 83706 | t: (208) 345.8872 | f: (208) 343.7162 | www.zga.com

CAD FILE NAME:
XREF FILE NAME:

DRAWING TITLE
**SECOND FLOOR HALLWAY
ELEVATIONS**

APPROVED: CHIEF OF FACILITY MANAGEMENT SERVICE
APPROVED: MEDICAL CENTER DIRECTOR

PROJECT TITLE
VA RESIDENTIAL MENTAL
HEALTH FACILITY
VA-260-11-RP-0663

BUILDING NUMBER
123

CHECKED
DRAWN

LOCATION
VAMC BOISE, IDAHO

DATE
FEB 3, 2012

PROJECT NO.
531-CI-102

DRAWING NO.
ID7.2

DWG OF