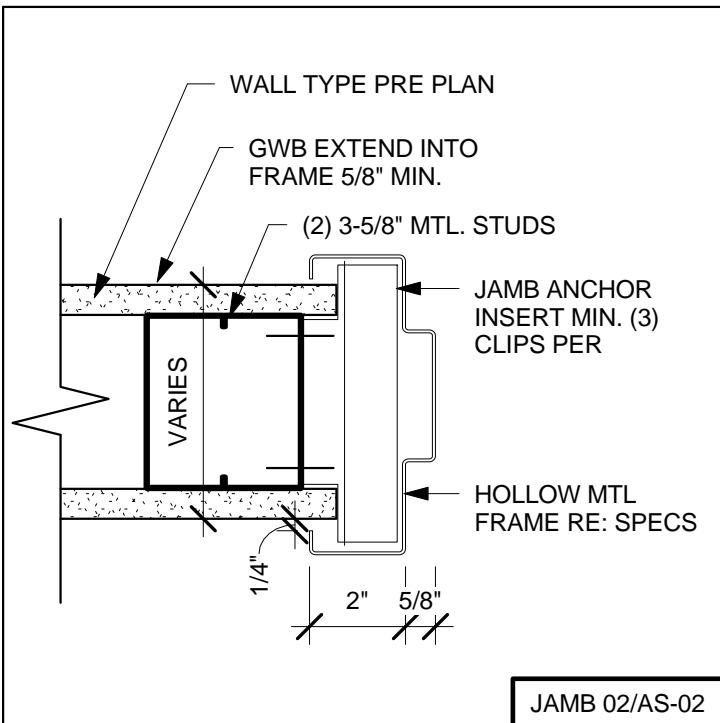
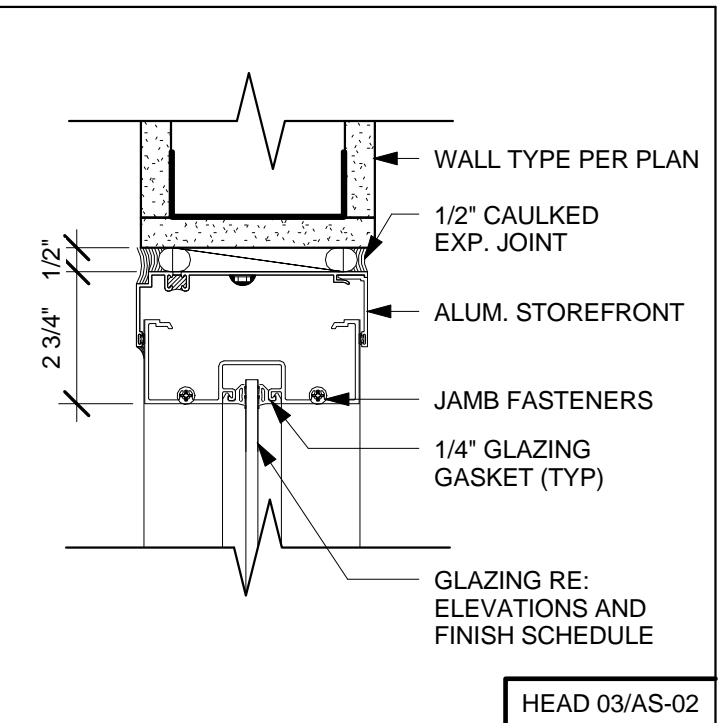


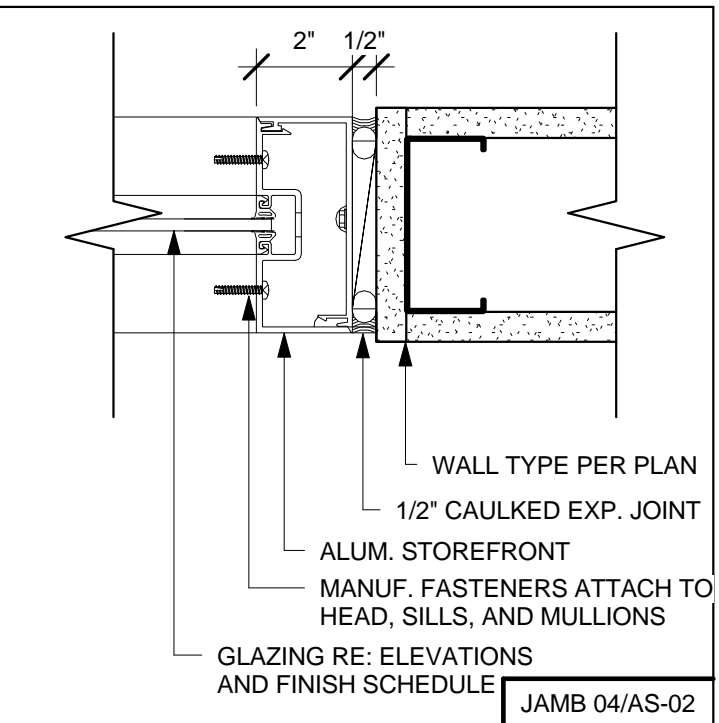
HEAD 01/AS-02



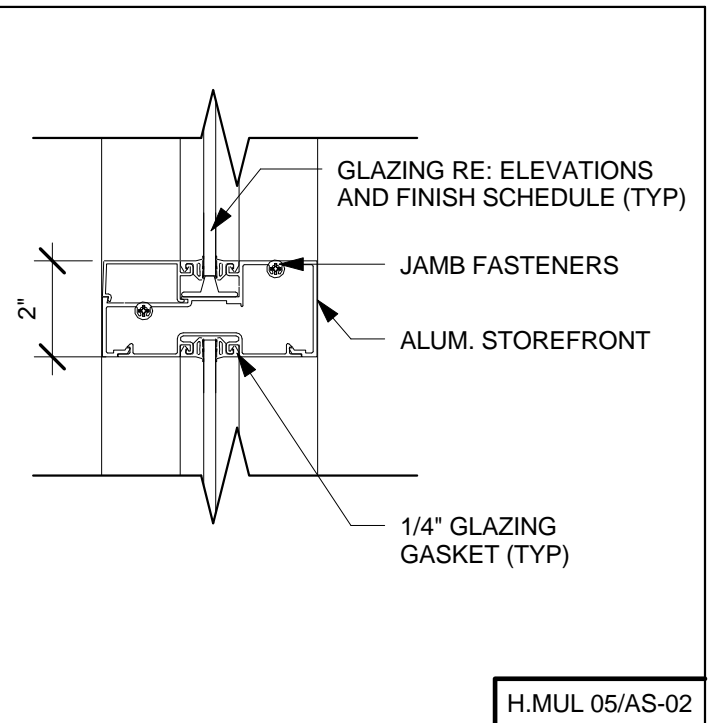
JAMB 02/AS-02



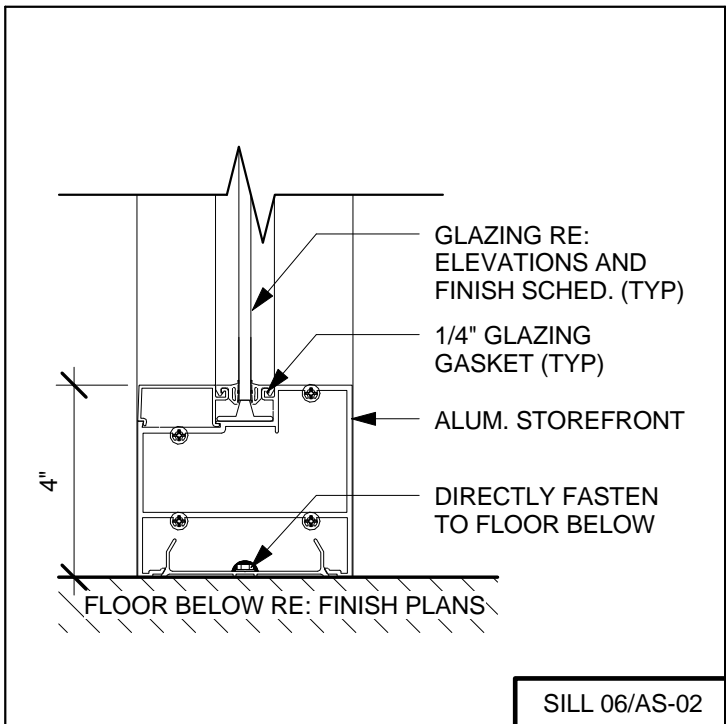
HEAD 03/AS-02



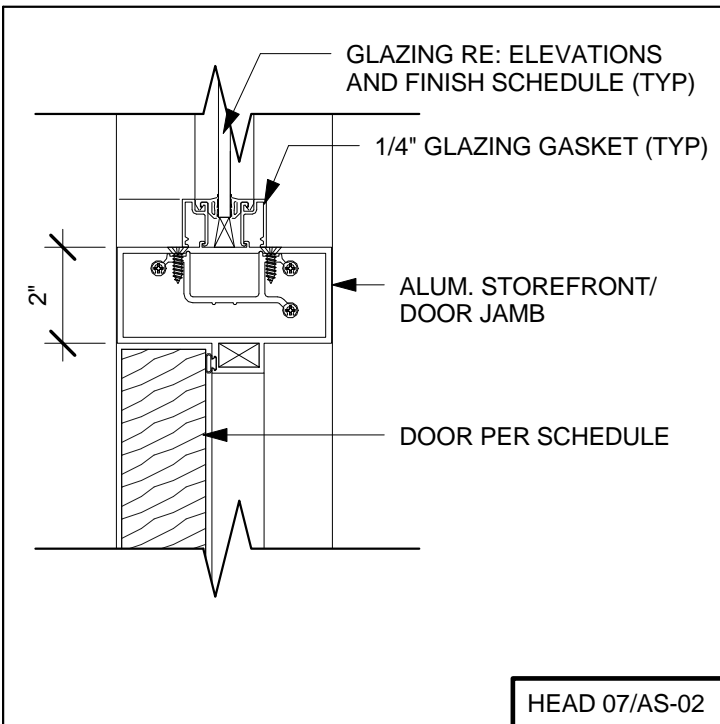
JAMB 04/AS-02



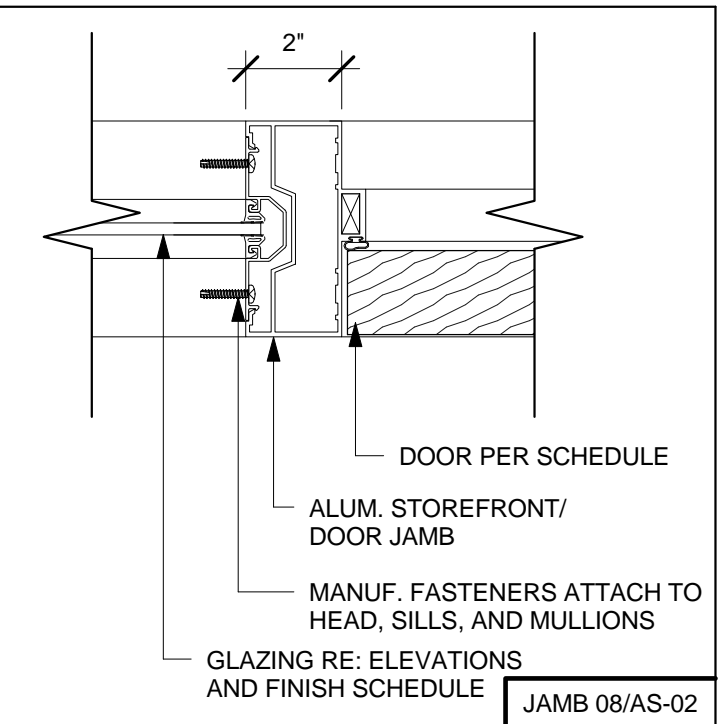
H.MUL 05/AS-02



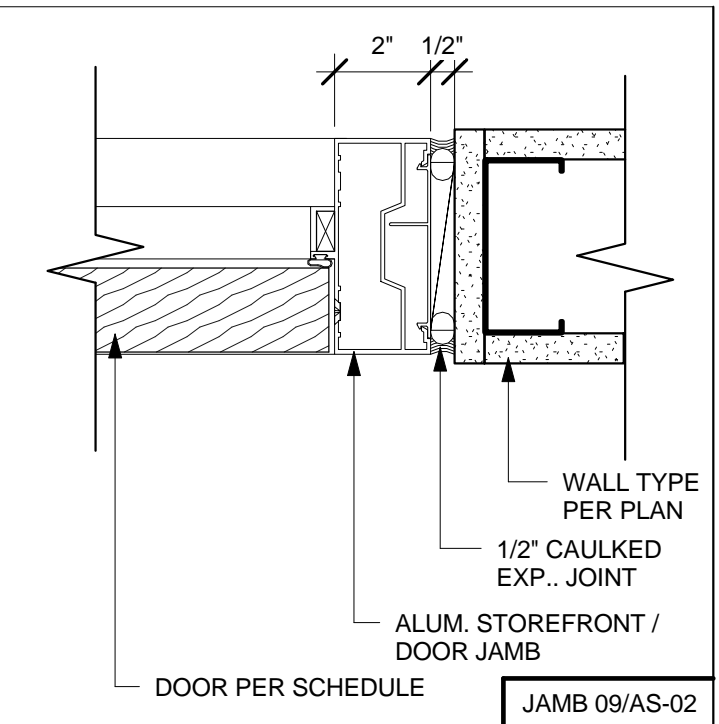
SILL 06/AS-02



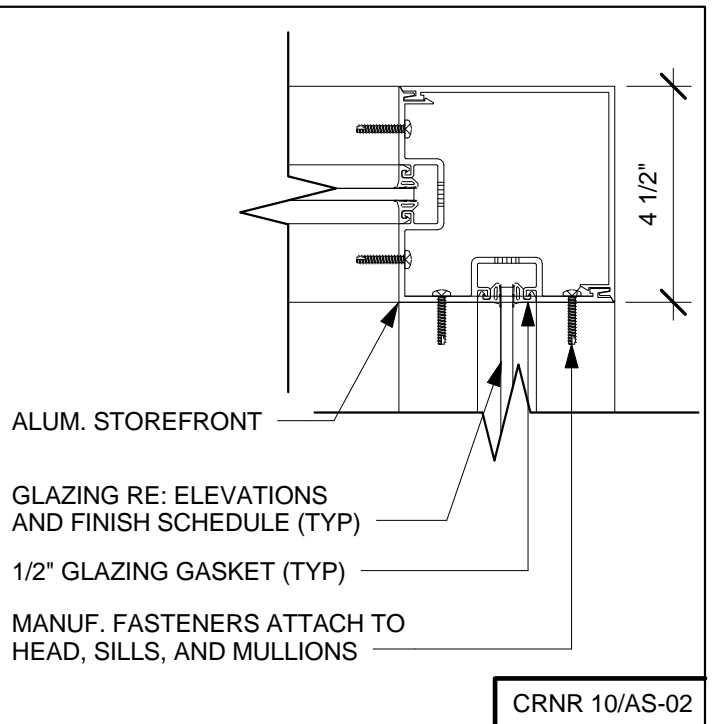
HEAD 07/AS-02



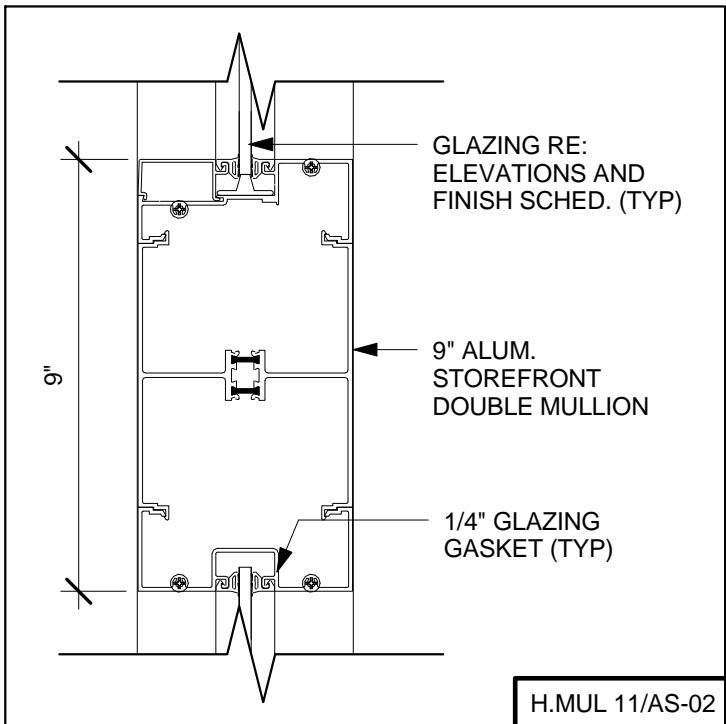
JAMB 08/AS-02



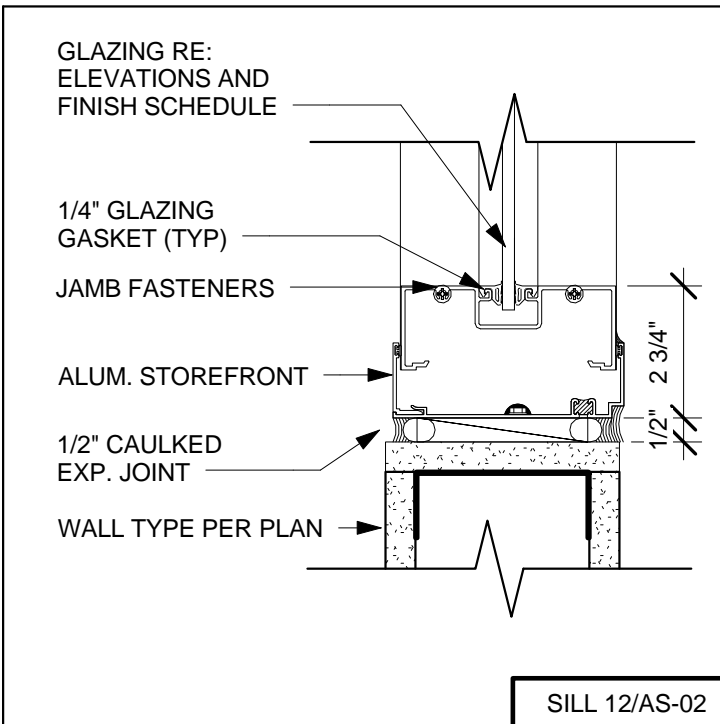
JAMB 09/AS-02



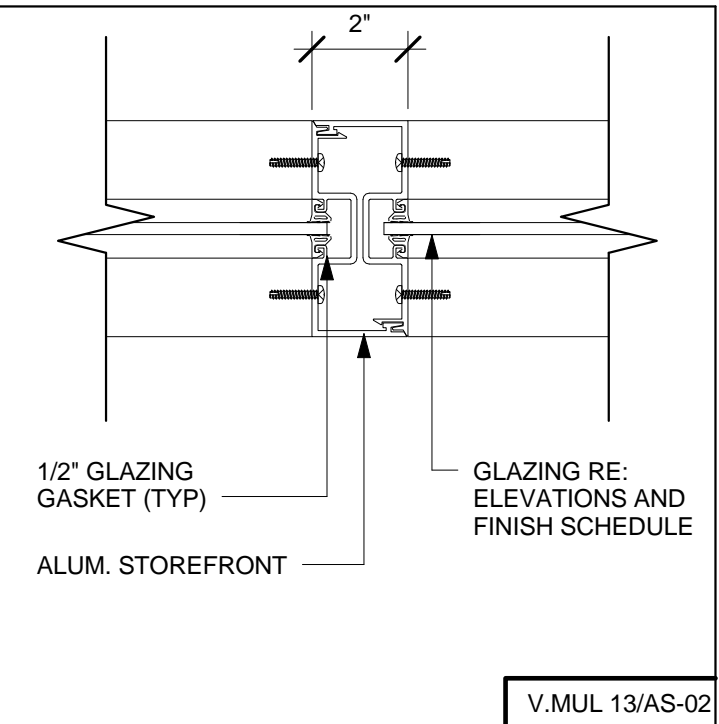
CRNR 10/AS-02



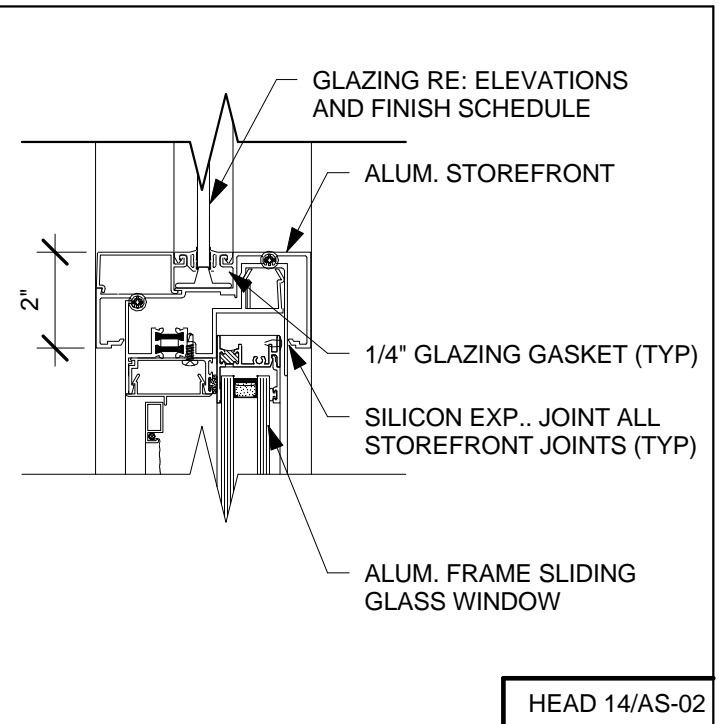
H.MUL 11/AS-02



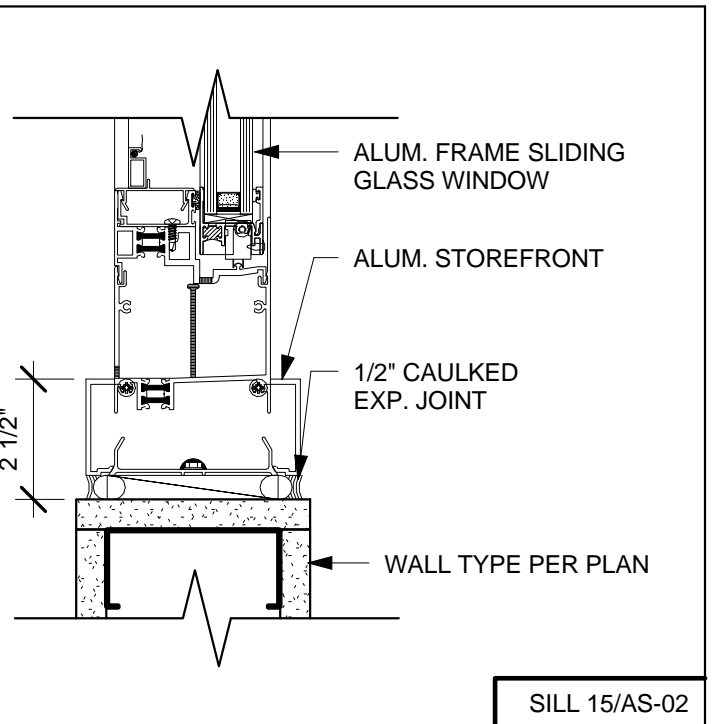
SILL 12/AS-02



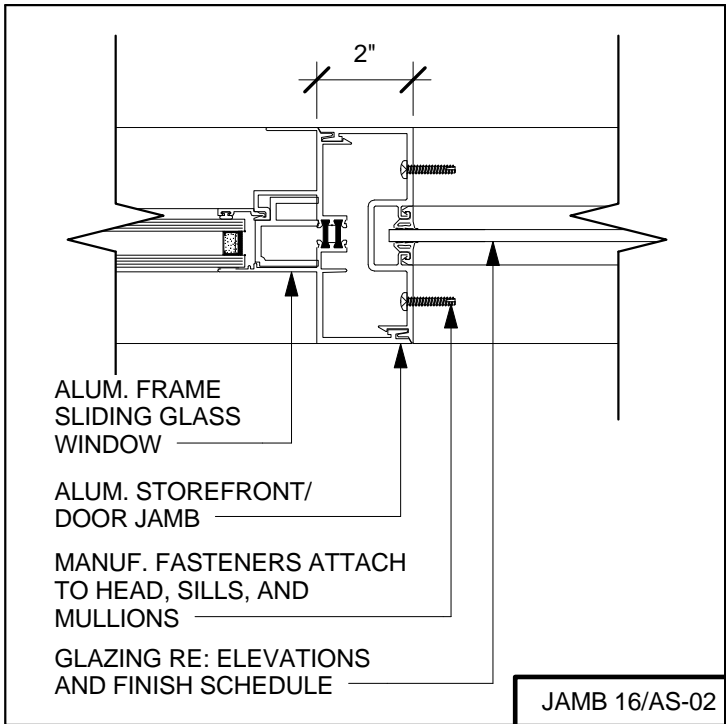
V.MUL 13/AS-02



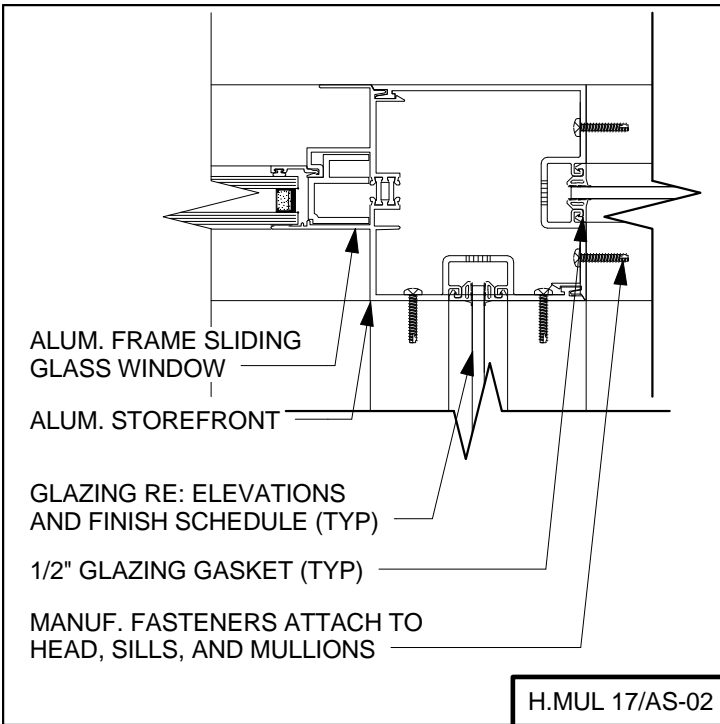
HEAD 14/AS-02



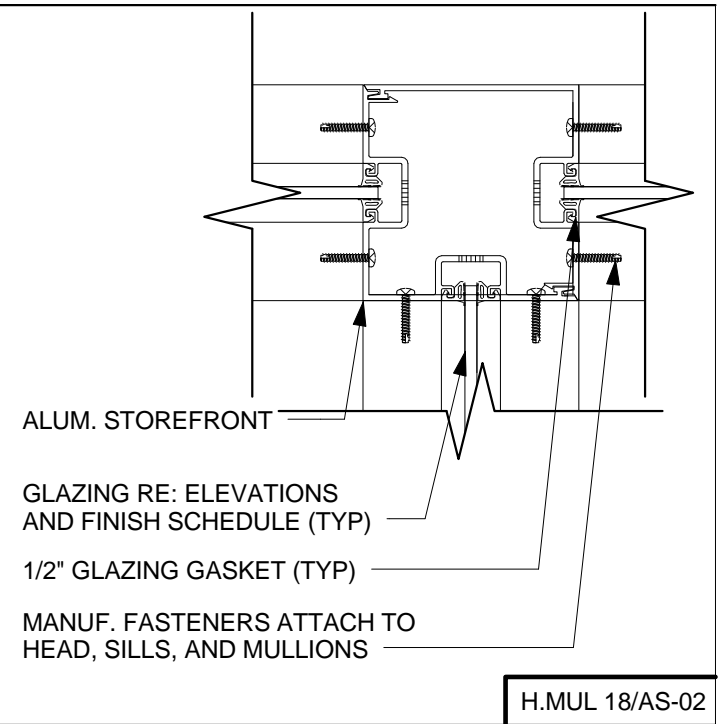
SILL 15/AS-02



JAMB 16/AS-02

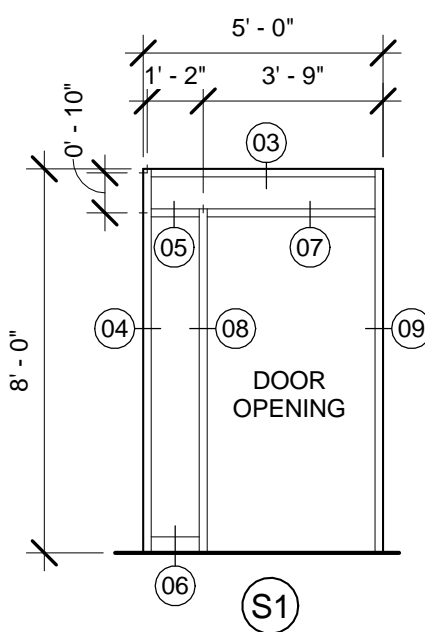


H.MUL 17/AS-02

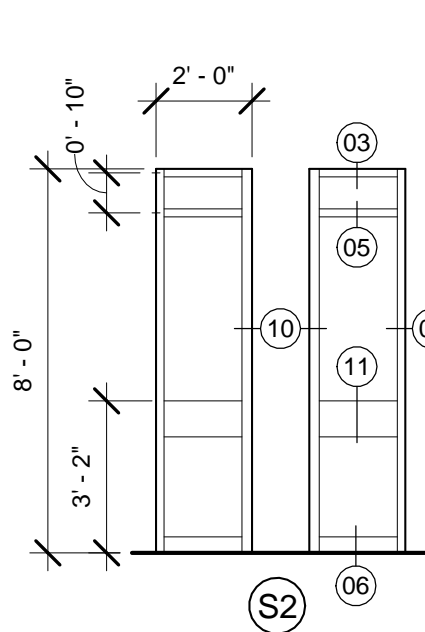


H.MUL 18/AS-02

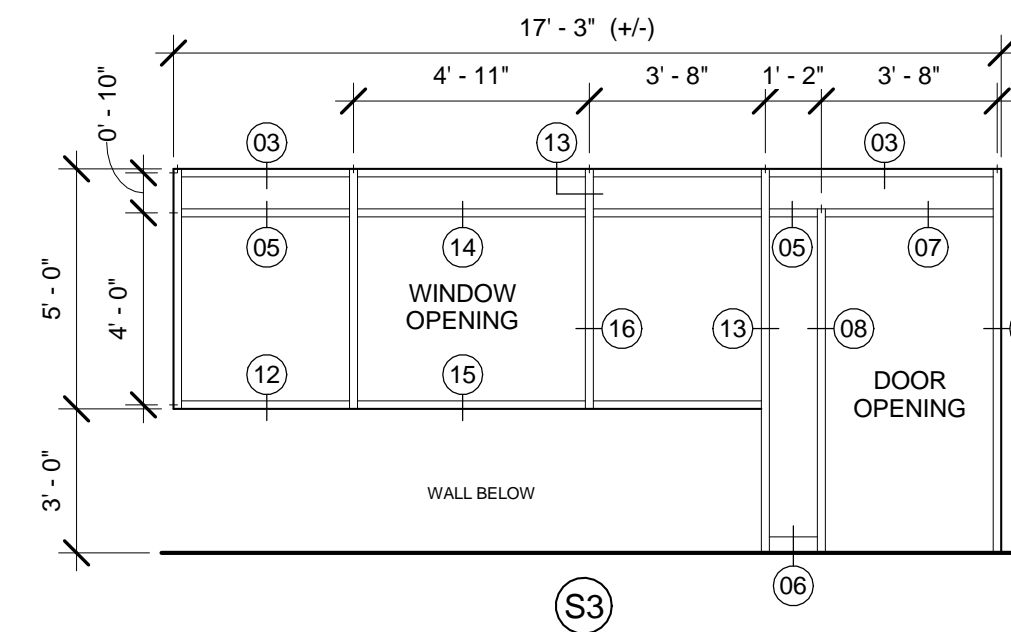
A11 STOREFRONT JAMB, SILL, & HEAD DETAILS
3" = 1'-0"



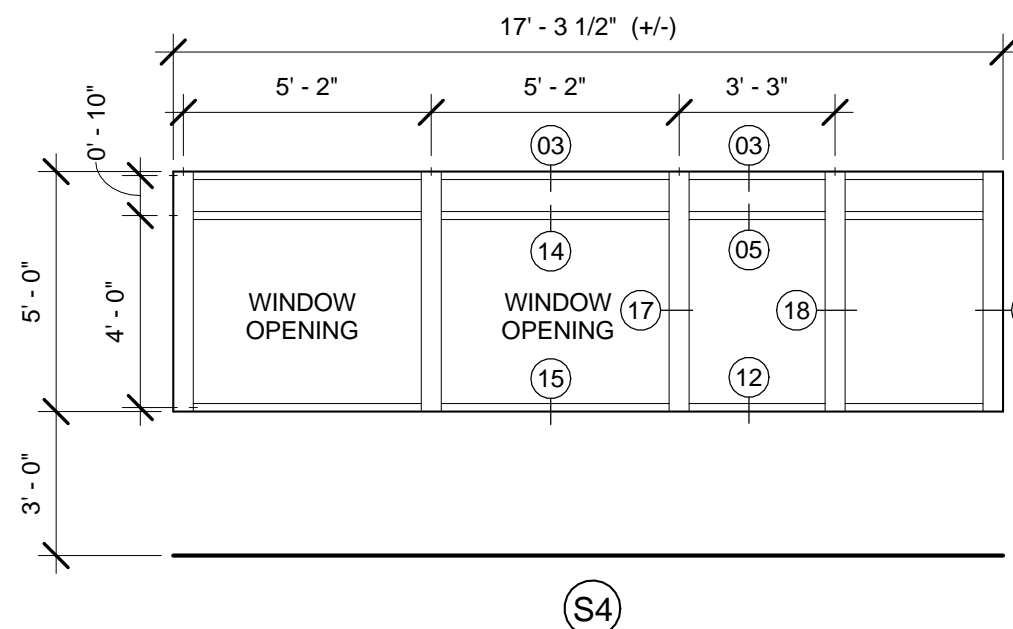
2" ANODIZED ALUMINUM
STOREFRONT FRAMING @
TYPICAL OFFICE DOOR



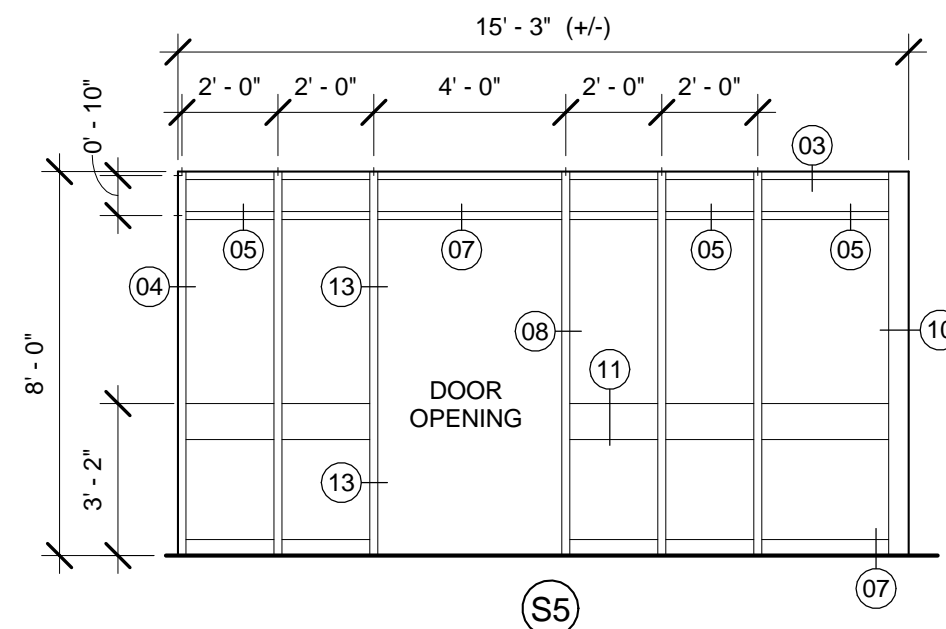
2" ANODIZED ALUMINUM
STOREFRONT FRAMING @
TYPICAL CORRIDOR CORNER



2" ANODIZED ALUMINUM
STOREFRONT FRAMING @
RECEPTION DOOR



2" ANODIZED ALUMINUM
STOREFRONT FRAMING @
RECPTION WINDOW



2" ANODIZED ALUMINUM
STOREFRONT FRAMING @
ENTRY DOOR

NOTES:
1. ALL DIMENSIONS SHOWN INDICATE APPROXIMATE ROUGH OPENING AND CENTER OF MULLIN LOCATIONS TO BE VERIFIED PRIOR TO INSTALLATION.
2. RE: PLANS, ELEVATIONS, AND DETAILS FOR ADDITIONAL INFORMATION.
2. RE: INTERIOR ELEVATIONS FOR GLAZING TYPES

A4 STOREFRONT TYPES
1/4" = 1'-0"

#	Revision Description	Date
1	Revision 1	05/08/12

CONSULTANTS:

Smith Seckman Reid, Inc.
11460 Tomahawk Creek Pkwy Suite 320
Leawood, Kansas 66211
p. (913) 319-3562
f. (913) 319-3579
www.ssr-inc.com

CMG Fire Protection Engineering
10727 West 128th Street
Overland Park, KS 66213
p. (913) 239-8900
f. (913) 239-8901
www.cmgfire.com

Seal

ARCHITECT:

TOMPKINS ARCHITECTS
507 Walnut Street, Suite 200, Kansas City, MO 64106
p. 816 472 5656 f. 816 472 5637 www.tom-arch.com

COPYRIGHT 2011 BY TOMPKINS ARCHITECTS, INC. ALL RIGHTS RESERVED. NO PART OF THESE DOCUMENTS MAY BE REPRODUCED, STORED IN A RETRIEVAL SYSTEM, OR TRANSMITTED IN ANY FORM OR BY ANY MEANS, ELECTRONIC, MECHANICAL, PHOTOCOPYING, RECORDING, OR OTHERWISE, WITHOUT THE PRIOR WRITTEN PERMISSION OF TOMPKINS ARCHITECTS, INC.

Drawing Title

STOREFRONT TYPES & DETAILS

Approved:

Project Title

RENOVATE 3K FOR MENTAL
HEALTH O/P CLINICS

Project Number

586-09-114

Building Number

3K

Location

G.V. (SONNY) MONTGOMERY VA MEDICAL CENTER

Date

03/09/12

100% SUBMISSION

Drawing Number

AS-02

G.V. (SONNY)
MONTGOMERY VA
MEDICAL CENTER
1500 E WOODROW WILSON
JACKSON, MS
39216

**Department of
Veterans Affairs**