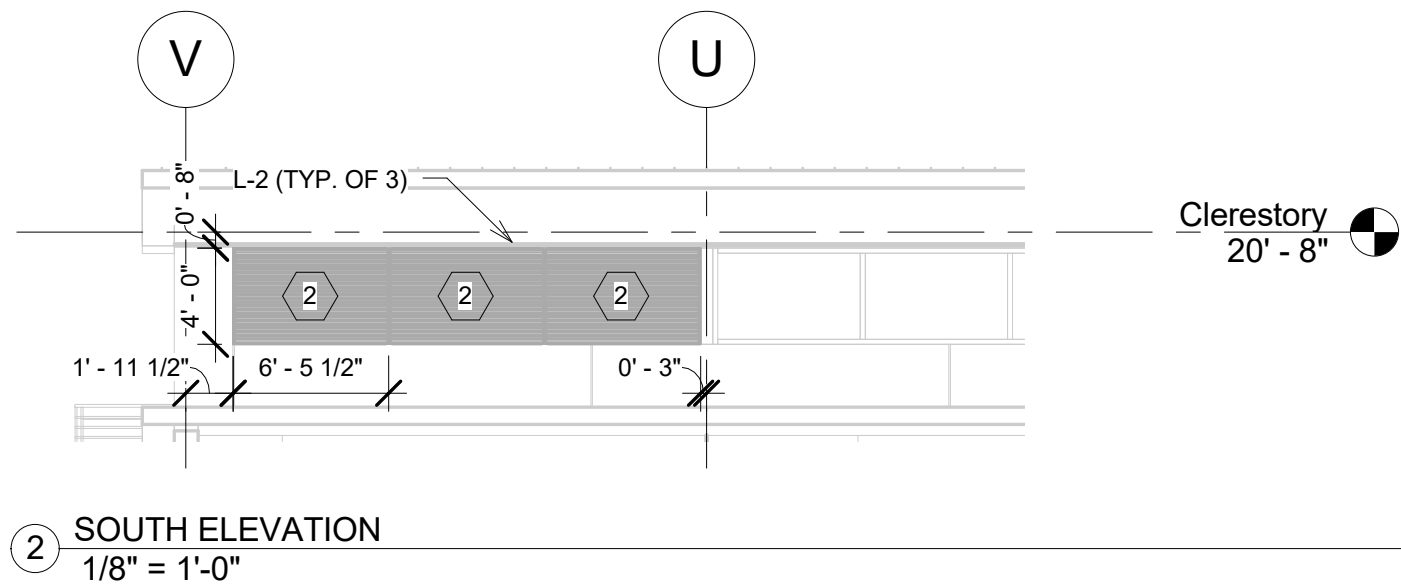
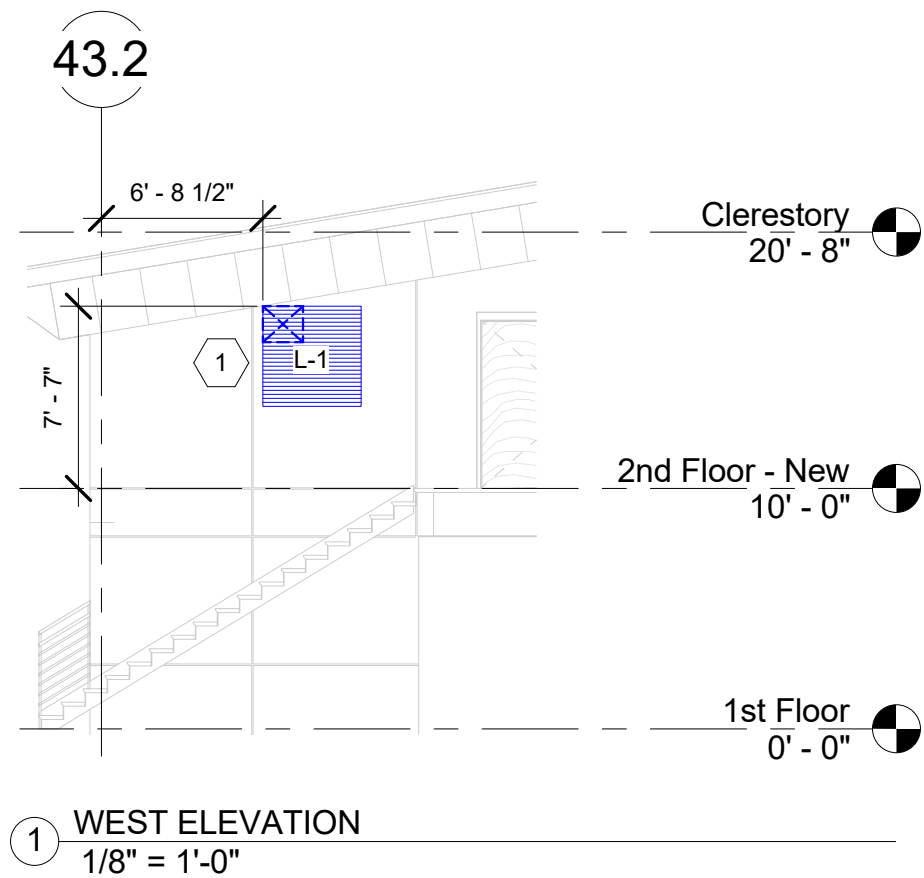
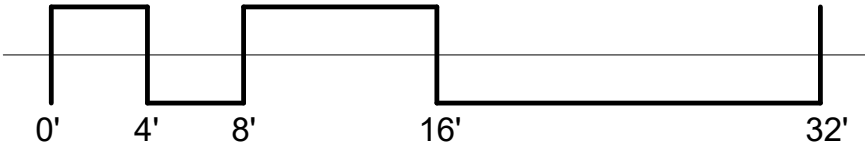


LOUVER SCHEDULE							
TAG	SERVICE	TYPE	CFM	MAX. PRESSURE DROP (IN.W.G.)	FINISH	MANUFACTURER AND MODEL	NOTES
L-1	MECHANICAL ROOM	RAIN-RESISTANT WEATHER LOUVER	4350	0.1	MILL	GREENHECK - EHH-701	1, 2, 3, 4, 5, 6, 8, 9
L-2	N/A	RAIN-RESISTANT WEATHER LOUVER	N/A	N/A	MILL	GREENHECK - EHH-701	3, 6, 7, 8
1. OUTSIDE AIR INTAKE IS RATED FOR 1.5X THE MAXIMUM FLOWRATE OF OA (CFM).						6. MATCH LOUVER TYPE AND HEIGHT OF L-1 AND L-2	
2. PROVIDE INTERNAL ALUMINUM INSECT SCREEN						7. BLANK OFF LOUVERS WITH INSULATION PANELS	
3. ALUMINUM CONSTRUCTION						8. FRAME DEPTH SHALL MATCH THICKNESS OF THE WALL	
4. WIND-DRIVEN RAIN LOUVER - INTAKE AIR SHALL NOT ENTRAIN WATER FROM RAIN						9. PROVIDE INSULATED LOUVER PLENUM TO CONNECT TO OA INTAKE DUCT	
5. CONNECT INTAKE DUCT FROM AHU TO BOX OF LOUVER							



KEYNOTE LEGEND

- 1 LOCATE UPPER LEFT CORNER OF LOUVER IN THE POSITION INDICATED BY THE DIMENSIONS. DO NOT CUT INTO THE SOFFIT OR FASCIA.
- 2 AT THE CONTRACTOR'S OPTION, USE INSULATED SPANDREL GLASS IN PLACE OF THE BLANKED-OFF LOUVER. SPANDREL GLASS SHALL MATCH THE VISION WINDOWS' APPEARANCE.



DRAWING TITLE : LOUVER DETAILS

PROJECT TITLE : MRI/PET CLINIC & WAITING AREA

Department of
Veterans Affairs



VALHALLA
ENGINEERING
GROUP, LLC

2629 W Main St
Suite 190
Littleton, CO 80120
(720) 550-6307
www.valhallaengineering.com

SCALE : 1/8" = 1'-0"

DATE ISSUED: 03/31/17