

DOOR TYPES

NOTES:

- ALL DOORS TO HAVE KICK PLATES, HOSPITAL GRADE STOPS & BUMPERS, THRESHOLDS FOR EXTERIOR DOORS.
- INTERIOR DOORS SHALL BE FITTED WITH SCHLAGE D-SERIES CYLINDRICAL CLOSERS: YALE #3501 3/3, OR EQUIVALENT.
- EXIT DOORS SHALL BE OPENABLE FROM THE INSIDE WITH OUT THE USE OF A KEY OR ANY SPECIAL KNOWLEDGE OR EFFORT.
- ALL RATED DOORS TO BE POSITIVE LATCHING.
- "LABEL" SHALL MEAN "ASSEMBLY" AS DEFINED IN THE SECTION 4306(R) UBC 1985.
- ALL 20 MIN RATED ASSEMBLIES SHALL BE PROVIDED WITH APPROVED GASKETING MATERIAL SO INSTALLED TO PROVIDE A SEAL WHERE THE DOOR MEETS THE STOP ON BOTH SIDES AND ACROSS THE TOP. (UBC STD. 43.210)
- HAND-ACTIVATED DOOR-OPENING HARDWARE SHALL BE CENTERED BETWEEN 30 & 44 INCHES ABOVE THE FLOOR. LATCHING AND LOCKING DOORS THAT ARE HAND-ACTIVATED AND WHICH ARE IN THE PATH OF TRAVEL, SHALL BE OPERABLE WITH A SINGLE EFFORT BY LEVER-TYPE HARDWARE, BY PANIC BARS, PUSH-PULL ACTIVATION BARS, OR OTHER HARDWARE DESIGNED TO PROVIDE PASSAGE WITHOUT REQUIRING THE ABILITY TO GRASP THE OPENING HARDWARE. LOCKED EXIT DOORS SHALL OPERATE AS ABOVE IN EGRESS DIRECTION.

EQUIPMENT SCHEDULE

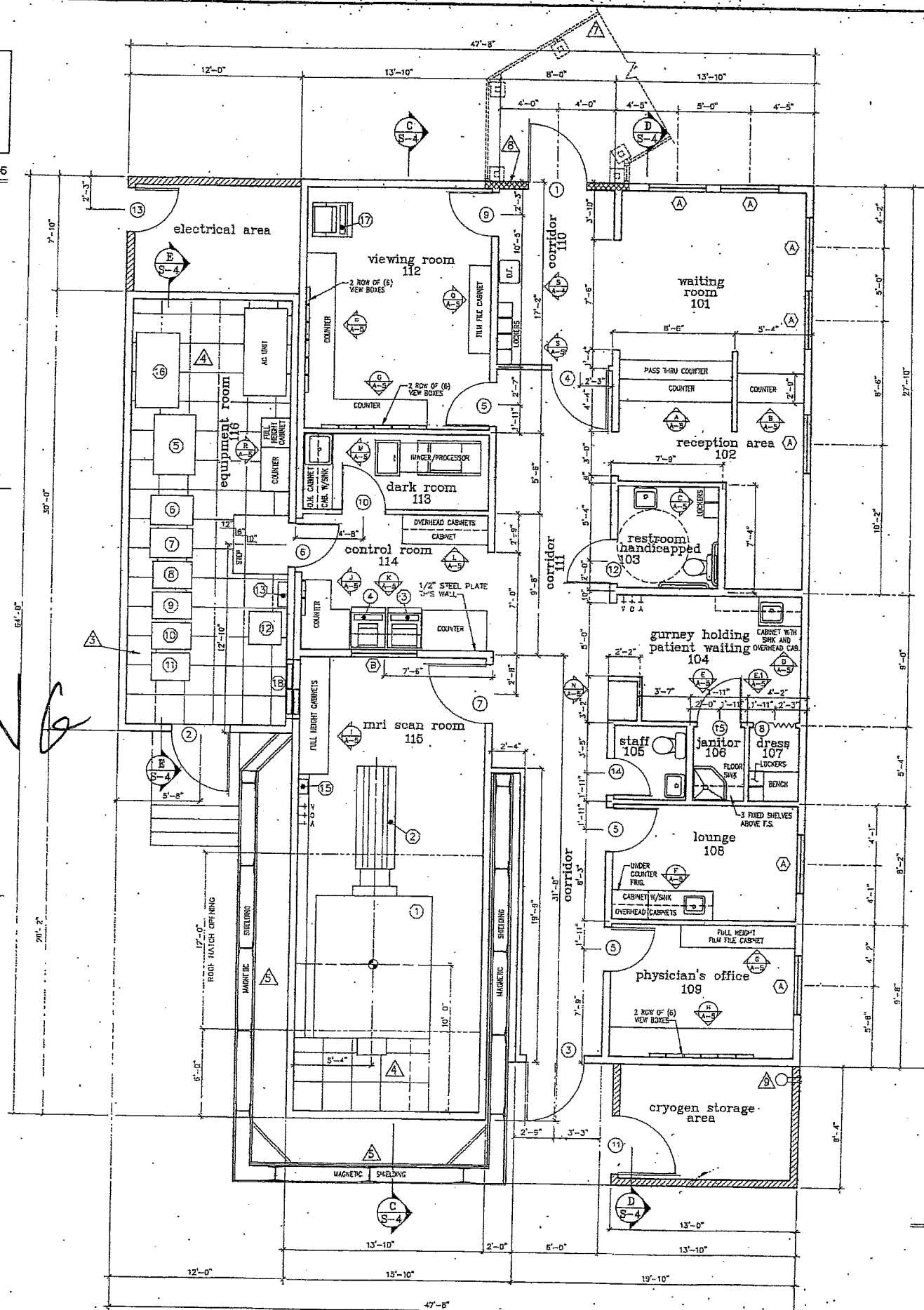
NO	EQUIPMENT	ANCHORAGE
1	1.5 TESLA MAGNET	SEE DTL 32/S-6
2	PATIENT COUCH	SEE DTL 34/S-6
3	OPERATORS CONSOLE	
4	VIEWING CONSOLE	
5	COMPUTER	SEE DTL 35&37/S-6
6	LOW LEVEL RF AMP CABINET	
7	ETO (RF AMP) CABINET	
8	X/Y GRADIENT CABINET	
9	CPD/Z GRADIENT CABINET	
10	SHIM POWER SUPPLY	
11	MAGNET POWER SUPPLY	
12	PATIENT/GRADIENT BLOWER CABINET	
13	COUCH POWER SUPPLY	
14	SYSTEM POWER SUPPLY	
15	ERGU	
16	LIEBERT 50 KVA POWER CONDITIONER	
17	REMOTE VIEWING CONSOLE	
18	PENETRATION PANEL	

WINDOW SCHEDULE

MARK	SIZE	FRAME	GLASS TYPE	QTY	REMARKS
A	4-0 x 4-0	STEEL FRONT	TEMPERED	7	TO MATCH EXISTING HOSPITAL
B	4-0 x 4-0	SPECIAL	SPECIAL	1	RF SHIELDED GLASS

DOOR SCHEDULE

MARK	SIZE	HAND	TYPE	MATL	FINISH	FRAME	GLASS	QTY	REMARKS
1	4-0 x 7-0	R-L	4	HOLLOW METAL	PAINT	TIMELY	---	1	1 1/2 HOUR FIRE RATED
2	4-0 x 7-0	R-R	3	HOLLOW METAL	PAINT	TIMELY	---	1	
3	4-0 x 7-0	L-R	3	HOLLOW METAL	PAINT	TIMELY	---	1	
4	4-0 x 7-0	L-L	2	WOOD SC	STAIN	TIMELY	TEMPERED	1	
5	3-0 x 7-0	L-L	4	WOOD SC	STAIN	TIMELY	---	3	
6	3-0 x 7-0	R-R	2	WOOD SC	STAIN	TIMELY	TEMPERED	1	
7	4-0 x 7-0	R-L	SPECIAL	SPECIAL	SPECIAL	SPECIAL	---	1	RF SHIELDED
8	3-0 x 7-0	---	5	WOOD	STAIN	---	---	1	WOOD ACCESSORY DOOR
9	3-0 x 7-0	R-L	4	WOOD SC	STAIN	TIMELY	---	1	
10	3-0 x 7-0	L-L	4	WOOD SC	STAIN	TIMELY	---	1	LIGHT TIGHT
11	4-0 x 7-0	R-L	3	HOLLOW METAL	PAINT	TIMELY	---	1	
12	3-0 x 7-0	R-R	4	WOOD SC	STAIN	TIMELY	---	1	
13	3-0 x 7-0	R-L	3	HOLLOW METAL	PAINT	TIMELY	---	1	
14	2-5 x 7-0	R-L	4	WOOD SC	STAIN	TIMELY	---	1	
15	3-0 x 7-0	L-L	4	WOOD SC	STAIN	TIMELY	---	1	



NOTES:

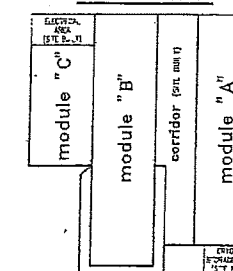
- ALL WALLS AND SUB CEILING 5/8" GYP. BD.
- MRI SCAN ROOM SHEET-COPPER OVER GYP BD.
- FOR RF SHIELDING IN EQUIPMENT ROOM REFER TO PICKER PLANS.
- COMPUTER RAISED TILE FLOORING 12" ABOVE FINISH FLOOR.
- FOR MAGNET SHIELDING DIMENSIONS & DETAILS REF. TO SHEET S-9.
- FOR EQUIPMENT LOCATION & INSTALLATION SEE PICKER DRAWINGS. ANY DIFFERENCE BETWEEN THIS FLOOR PLAN & PICKER DRAWINGS REQUIRES VERIFICATION FROM PME DESIGN DEPARTMENT.
- FOR SITE BUILT CORRIDOR & CORRIDOR CONNECTIONS REF. TO SHEETS AC-1, SC-1, & SC-2.
- 2 HOUR FIRE RATED WALL TO BE TWO LAYERS OF 5/8" TYPE "X" GYPSUM WALLBOARD EACH SIDE BASE LAYER SCREWED TO 2x6 WOOD STUDS @ 16" O.C. FACE LAYER 5/8" EXTERIOR GYPSUM WALLBOARD 2 1/2" SCREWS APPLIED. EXTERIOR LAYERS TO BE SITE INSTALLED. REFERENCE 1988 UBC TABLE 43B, ITEM NO. 16-1.5. SEE DET.
- FIRE SPRINKLER RISER. SEE FIRE PROTECTION DRAWING

SYM	CODE
(Symbol)	BUILDING SECTION REFERENCE
(Symbol)	WINDOW REFERENCE
(Symbol)	DOOR REFERENCE
(Symbol)	CABINET ELEVATION REFERENCE
(Symbol)	EQUIPMENT REFERENCE
(Symbol)	STRUCTURAL DETAIL REFERENCE
(Symbol)	SEE NOTE NUMBER 'X'
(Symbol)	REVISION CHANGES

LEGEND

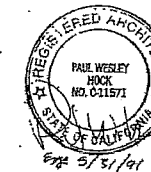
(Symbol)	6" WOOD STUDS @ 16" O.C.
(Symbol)	4" WOOD STUDS @ 16" O.C.
(Symbol)	2 HOUR WALL - SEE NOTE B
(Symbol)	6" x 8" H.O.P. WALL (5 STE. B.W.) OPEN (NO ROOF)

MODULE KEY



FLOOR PLAN

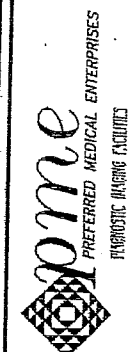
2580 SQUARE FEET



REVISIONS	BY
8-6-1990	RT
11-1-1990	RT
3-5-1991	RT

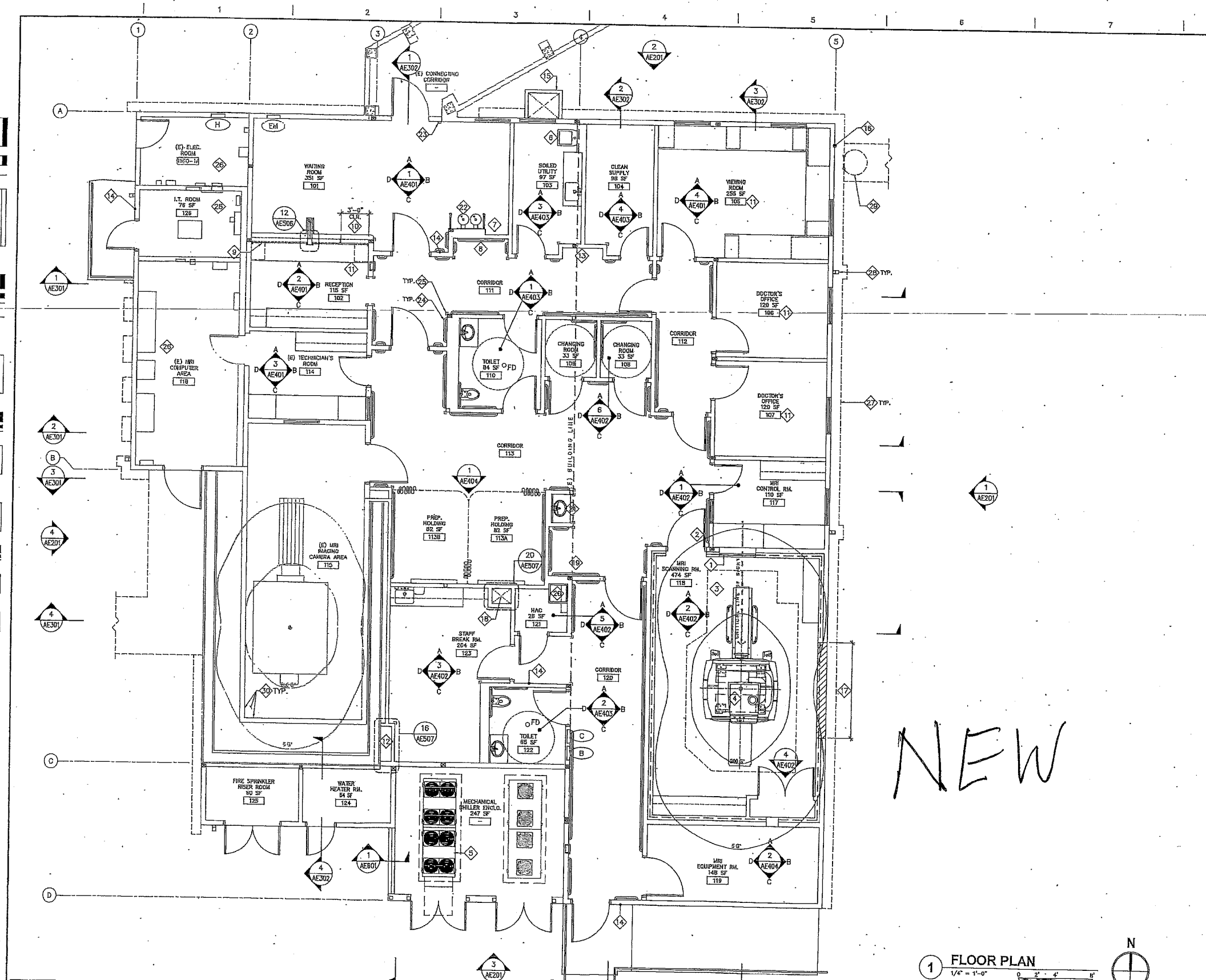


MRI FACILITY FOR:
VETERANS ADMINISTRATION MEDICAL CENTER
5901 EAST 7TH STREET
LONG BEACH, CALIFORNIA 90822



Date: 2-5-1990
Scale: 1/4" = 1'-0"
Drawn: RT
Job: 3-05-10
Sheet: A-2
of 2 Sheets

© pme 1990



KEYNOTES

- RF SHIELDED VIEWING WINDOW, SEE DETAILS 4, 5 & 6 ON AE508.
- RF SHIELDED DOOR, SEE DETAILS 12, 13 & 14 ON AE508.
- ROOM W/ GFG EQUIPMENT. ALL GOVERNMENT VENDOR REQUIREMENTS SHALL BE COMPLETED. SEE SHEET GC102 FOR PRE-INSTALLATION REQUIREMENTS.
- 1.5 TESLA ACTIVE SHIELD MAGNET, REFER TO OTHER DISCIPLINES' DRAWINGS FOR MORE INFORMATION.
- MECHANICAL CHILLER, SEE MECHANICAL DWGS. FOR MORE INFORMATION.
- WALL-MOUNTED CLINIC SERVICE SINK
- WHEELCHAIR ALCOVE
- CLEAN LINEN ALCOVE
- ROLL-UP SHUTTER OVER RECEPTION COUNTER, SEE DETAIL 16/AE505.
- ACCESSIBLE COUNTER
- PANIC BUTTON, SEE LOW VOLTAGE DRAWINGS.
- PIPE CHASE
- PATIENT LOCKER ALCOVE
- SECURITY CARD READER, SEE LOW VOLTAGE DRAWINGS.
- NEW CRAWLSPACE ACCESS, SEE AE103 AND DETAILS 1&2/AE502.
- EXTERIOR ROOF ACCESS LADDER, SEE DETAIL 12/AE502.
- 10' WIDE x 9' HIGH REMOVABLE WALL SECTION FOR MAGNET DELIVERY & REPLACEMENT, SEE AE303.
- EXHAUST SHAFT FROM CRAWLSPACE TO VENT THROUGH ROOF
- CRASH CART ALCOVE
- MOP SERVICE BASIN BELOW UTILITY SHELF WITH MOP/BROOM HOLDER
- HAND-WASHING STATION
- DRINKING FOUNTAIN
- (E) AUTOMATIC DOOR OPERATOR ACTUATOR, RELOCATED, SEE ELEC. DWGS.
- (H) HANDRAIL AND CRASH RAIL, SEE DETAIL 1/AE506, AND FINISH SCHEDULE ON AF601.
- HIGH IMPACT CORNER GUARD, SEE DETAIL 4/AE508, AND FINISH SCHEDULE ON AF601.
- SEE ELECTRICAL AND LOW VOLTAGE DRAWINGS FOR MORE INFORMATION.
- MOW STRIP LINE SEE AS100 AND LANDSCAPE DRAWINGS FOR MORE INFO.
- DOWNSPOUT, SEE DETAIL 13/AE501.
- CAGED LADDER, SEE DETAIL 12/AE502.
- FINISH WALL AND FLOOR TO MATCH (E) MATERIAL AND FINISH OF ADJACENT SURFACE UPON COMPLETION OF STRUCTURAL WORK WHERE OCCUR, SEE STRUCTURAL DWGS.

GENERAL NOTES

- FOR DIMENSIONAL PLAN SEE SHEET AE100.
- ALL WALLS AND FLOORS WHERE DOOR FRAMES ARE BEING ALTERED SHALL BE PATCHED AND REPAIRED TO MATCH ADJACENT FINISHES. TYP. PROVIDE FLOORING TRANSITION STRIP AS RECOMMENDED BY MANUFACTURER. SEE SHEET AF101.
- SEE AE104 FOR FURNITURE AND EQUIPMENT INFO.
- FOR ADDITIONAL RF SHIELDING DETAILS, SEE DETAIL 12, 17, 18, & 20 ON SHEET AE508.

LEGEND

- (E) WALL
- (N) NON-RATED WALL
- (N) RF SHIELDED WALL
- (E) DOOR
- (N) DOOR
- (E) WINDOW
- (N) WINDOW
- (N) SEMI RECESSED FIRE EXTINGUISHER
- (N) ELECTRICAL PANEL, SEE ELEC. DWGS.
- (E) ELECTRICAL PANEL, SEE ELEC. DWGS.
- FLOOR DRAIN

NOTE: SEE G1001 FOR OTHER LEGEND AND SYMBOLS

FLOOR PLAN

1/4" = 1'-0"



ARCHITECT/ENGINEERS/CONSULTANTS:



FLOOR PLAN

Project Title
MRI RENOVATION
AND EXPANSION

Project Number
600-CSI-101
Building Number
180

Office of
Facilities
Management

Location
VA LONG BEACH HEALTHCARE SYSTEM
8001 EAST SEVENTH ST. LONG BEACH, CA 90822

Drawing Number
AE101

Date
MAY 27, 2019

Checked
RK

Drawn
[Blank]

Dep. 25 of 211

Department of
Veterans Affairs

FINAL SUBMITTAL 5/27/2019