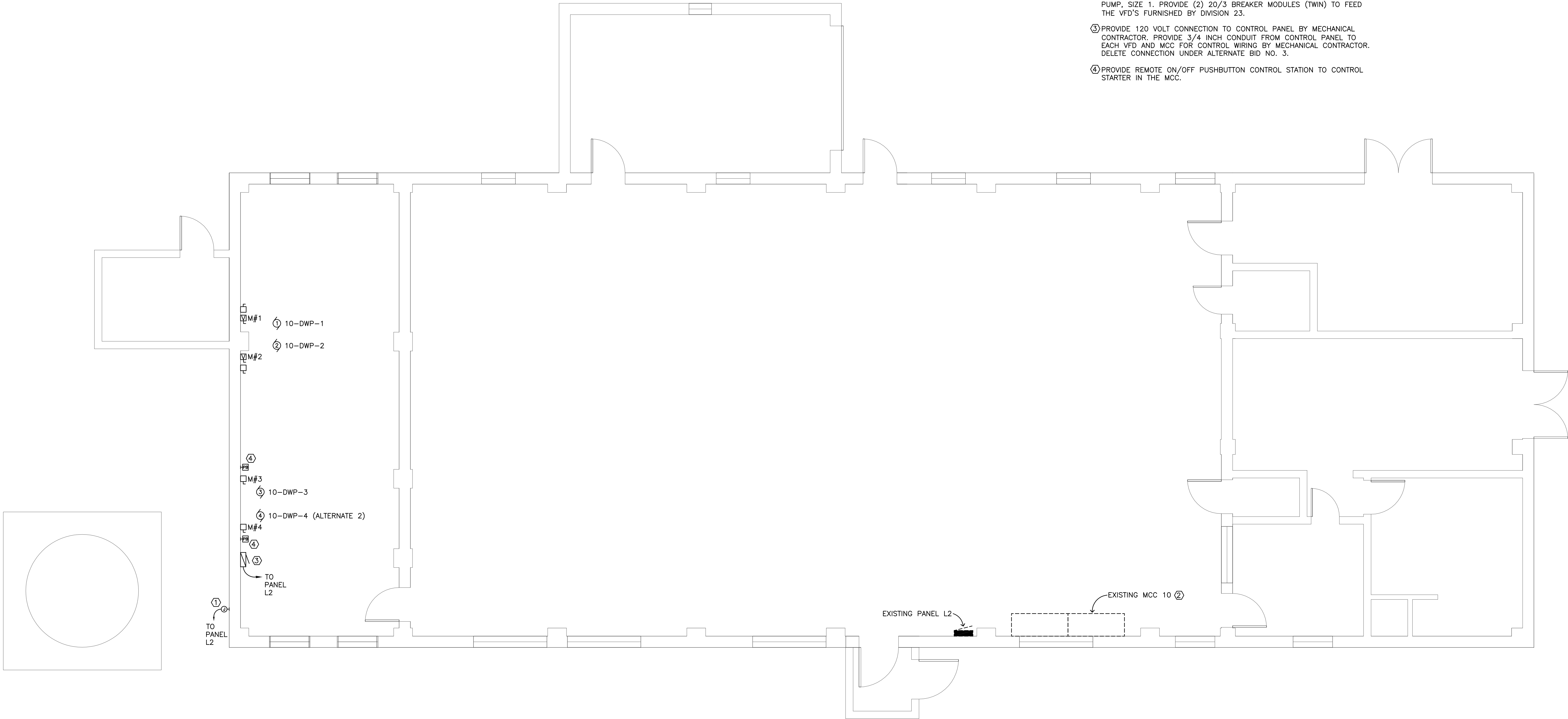


MOTOR AND EQUIPMENT SCHEDULE																													
MOTOR NO	DESCRIPTION OF MOTOR OR EQUIPMENT	LOCATION (ROOM NO)	LOAD IN HORSEPOWER (HP) OR FULL LOAD AMPS (FLA)	VOLTAGE, PHASE	PANEL AND CIRCUIT NUMBER OR MCC NUMBER	CONDUCTOR SIZE AND QUANTITY	GROUND CONDUCTOR SIZE	CONDUIT SIZE	CONTROLLER						DISCONNECT			CONTROL OR AUXILIARY DEVICE (SEE NOTES)											
									MAGNETIC STARTER/DISCONNECT	STARTER SIZE	VARIABLE FREQUENCY DRIVE	MANUAL MOTOR CONTROLLER	TOGGLE SWITCH	PILOT TOGGLE SWITCH	CONTROLLER BY (DIV. NO.)	CONTROLLER LOCATION (ROOM NO.)	DISCONNECT SIZE	FUSIBLE / NON FUSIBLE	NEMA RATING	DISCONNECT BY (DIV. NO.)	VFD	DEFINITE PURPOSE RELAY	TIME SWITCH	THERMOSTAT	AQUASTAT	ON-OFF PUSHBUTTON	FIRE ALARM CONTROL RELAY	FIRE ALARM DUCT DETECTORS (SUPPLY AND RETURN)	INTERLOCK WITH
1	10-DWP-1	BLR	7.5 HP	480, 3	MCC	3 #12	#12	3/4"			2				23	ROOM	30A	NF	1	26							1		
2	10-DWP-2	BLR	7.5 HP	480, 3	MCC	3 #12	#12	3/4"			2					23	ROOM	30A	NF	1	26						1		
3	10-DWP-3	BLR	2 HP	480, 3	MCC	3 #12	#12	3/4"	X	1					26	MCC	30A	NF	1	26						1			
4	10-DWP-4	BLR	2 HP	480, 3	MCC	3 #12	#12	3/4"	X	1					26	MCC	30A	NF	1	26						1			
<div>NOTES FOR AUXILIARY CONTROL DEVICE</div> <div>1. ELECTRICAL CONTRACTOR TO FURNISH, SET, AND WIRE AUXILIARY CONTROL DEVICE</div> <div>2. ELECTRICAL CONTRACTOR TO SET, AND WIRE AUXILIARY CONTROL DEVICE FURNISHED BY OTHERS</div> <div>3. ELECTRICAL CONTRACTOR TO WIRE AUXILIARY CONTROL DEVICE FURNISHED AND SET BY OTHERS</div> <div>4. PROVIDE DUCT DETECTOR IN SUPPLY AND RETURN DUCTS AND CONNECT TO FA SYSTEM</div>																													

ELECTRICAL SYMBOLS LEGEND		
SYMBOLS	DESCRIPTION	MOUNTING HEIGHT
	LIGHTING AND APPLIANCE PANELBOARD	18 INCHES
	MOTOR (NUMBER REFERS TO MOTOR AND EQUIPMENT SCHEDULE SEE SCHEDULE FOR WIRING AND CONTROLLER REQUIREMENTS)	
	NON-FUSED DISCONNECT	
	VARIABLE FREQUENCY CONTROLLER	
	WALL JUNCTION BOX	
	DASHED LINES INDICATE EXISTING FIXTURES, DEVICES, OR EQUIPMENT	
	CONDUIT CONCEALED IN WALL OR CEILING, QUANTITY OF CONDUCTORS NOT SHOWN, PROVIDE AS REQUIRED FOR DEVICE/CIRCUIT NUMBERS SHOWN.	
	NOTE IDENTIFICATION	
	HOME RUN TO PANELBOARD, QUANTITY OF CONDUCTORS REQUIRED NOT INDICATED, PROVIDE QUANTITY AS REQUIRED FOR CIRCUIT NUMBERS SHOWN, SWITCHING ARRANGEMENT, OR NUMBER OF HOME RUNS SHOWN. "#10" INDICATES WIRE SIZE, NO NUMBERS INDICATES #12, 3/4 INCH CONDUIT MINIMUM.	

- PLAN NOTES:
- ① PROVIDE 120 VOLT CONNECTION TO HEAT TAPE PROVIDE BY DIVISION 23.  
PROVIDE NEW 20/1 CLASS B, GFCI BREAKER IN PANEL L2 FOR CONNECTION TO HEAT TAPE.
- ② PROVIDE (2) TWIN STARTER MODULES TOTAL, (1) FOR EACH BOOSTER PUMP, SIZE 1. PROVIDE (2) 20/3 BREAKER MODULES (TWIN) TO FEED THE VFD'S FURNISHED BY DIVISION 23.
- ③ PROVIDE 120 VOLT CONNECTION TO CONTROL PANEL BY MECHANICAL CONTRACTOR, PROVIDE 3/4 INCH CONDUIT FROM CONTROL PANEL TO EACH VFD AND MCC FOR CONTROL WIRING BY MECHANICAL CONTRACTOR. DELETE CONNECTION UNDER ALTERNATE BID NO. 3.
- ④ PROVIDE REMOTE ON/OFF PUSHBUTTON CONTROL STATION TO CONTROL STARTER IN THE MCC.



1  
E1

FIRST FLOOR PLAN - ELECTRICAL REMODELING

0' 2' 4' 8'



Dept. of Veterans Affairs  
Medical Center  
2101 Elm Street North  
Fargo, ND 58102



IMAGE GROUP INC.  
403 CENTER AVENUE, SUITE 300  
MOORHEAD, MN 56560

IMAGE GROUP INC., Architecture & Interiors  
OBERMILLER NELSON ENGINEERING, Mechanical Engineers  
MBN ENGINEERING, Electrical Engineers



Drawing Title  
FIRST FLOOR PLAN - ELECTRICAL  
REMODELING

VA Project No.  
437-12-104

Building No.  
10

Contract No.  
VA263-P-1217  
VA263-C-

AutoCAD File Name  
11-171 ELDWG

Project Title  
VA MEDICAL CENTER  
INSTALL EMERGENCY WATER  
SUPPLY SYSTEM

Designed By  
MB

Checked By  
MB

Drawn By  
TP

Location  
VA MEDICAL CENTER  
FARGO, ND

Date  
APRIL 20, 2012

AS SHOWN

Drawing No.  
E1

Dwg. 3 of 3

