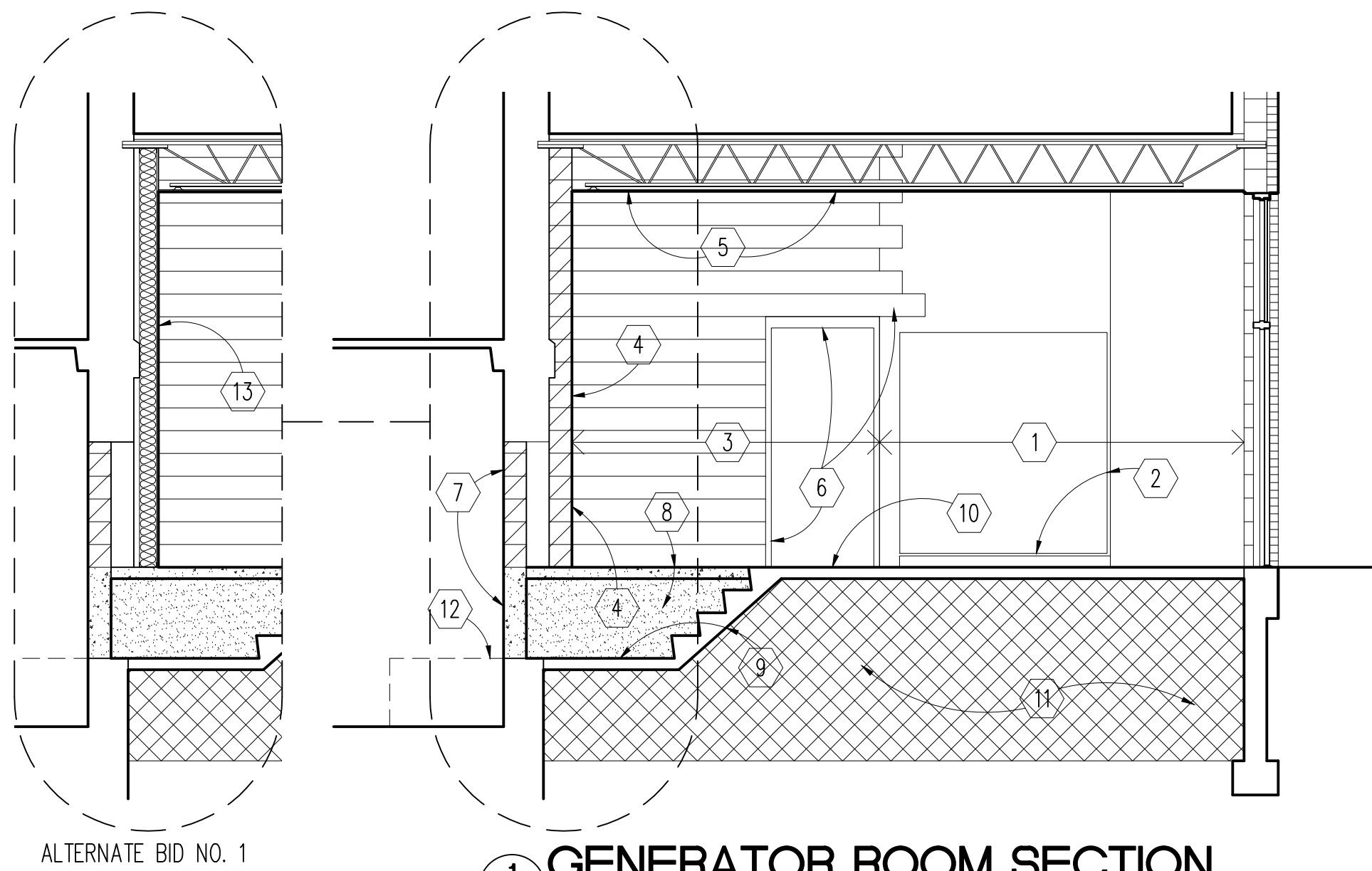
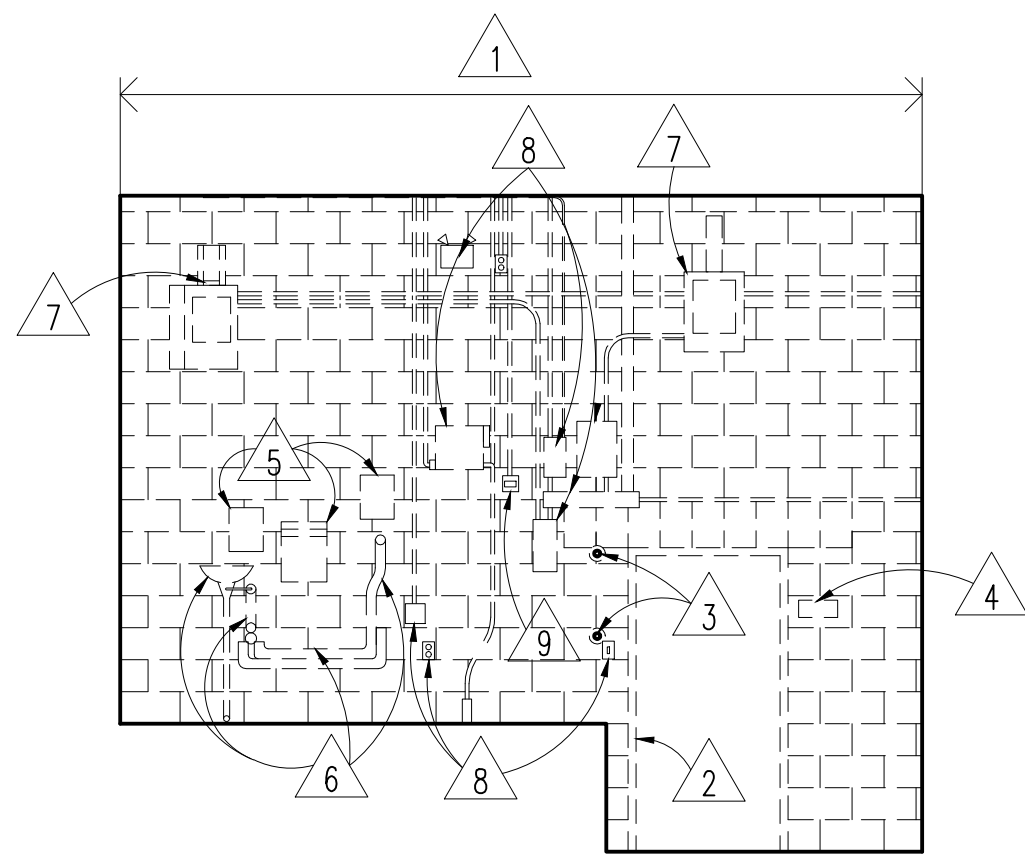


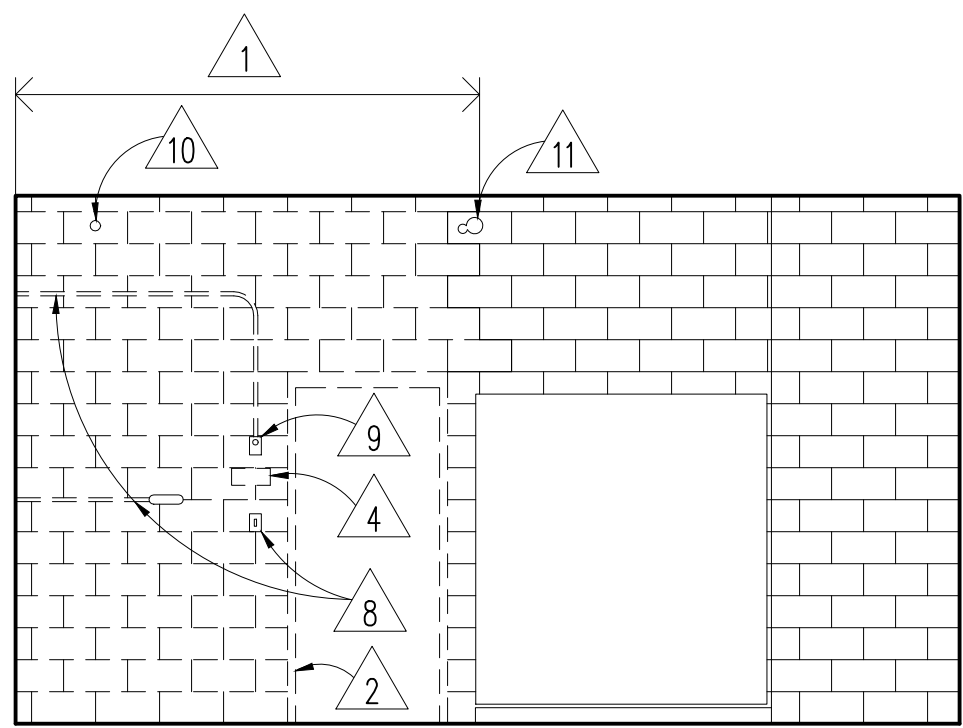
PARTIAL BASEMENT DEMOLITION PLAN
1/4"-1'-0"



1
A1
GENERATOR ROOM SECTION
1/4"-1'-0"



4
A1
SOUTH ELEV. - DEMOLITION
1/4"-1'-0"



5
A1
WEST ELEV. - DEMOLITION
1/4"-1'-0"

PLAN DEMO. NOTES

GENERAL:

- REFER TO MECHANICAL DRAWINGS FOR RELATED MECHANICAL DEMOLITION.
- REFER TO ELECTRICAL DRAWINGS FOR RELATED ELECTRICAL DEMOLITION.

DEMOLITION SYMBOLS LEGEND

--- DEMOLITION AS INDICATED

- CONCRETE SLAB ON GRADE, GENERATOR AND PAD, TRANSFORMER AND PAD, PUMP AND PAD AND DAY TANK TO REMAIN. PROVIDE DUST PROOF COVER OR ENCLOSURE FOR ALL EQUIPMENT WHICH REMAINS.
- REMOVE 8" CMU PARTITION.
- REMOVE DOOR AND FRAME.
- REMOVE METAL GUARDRAIL.
- REMOVE METAL STAIRS.

SECTION NOTES

- CMU WALL REMAINS.
- SWITCHBOARD AND CONCRETE RAD REMAINS
- REMOVE CMU WALL. REPLACE WITH NEW 8" CMU WALL. EXTEND TO UNDERSIDE OF STRUCTURE ABOVE. FILL CELLS WITH SAND FOR SOUND CONTROL.
- REMOVE CMU WALL. REPLACE WITH NEW 8" CMU WALL. EXTEND TO UNDERSIDE OF STRUCTURE ABOVE. FILL CELLS WITH SAND FOR SOUND CONTROL BEARING ON EXISTING FLOOR OR STAIR SLAB.
- REMOVE GMB CEILING AS REQUIRED FOR CMU WALL WORK. PATCH TO MATCH CEILING.
- REMOVE H.M. DOOR AND FRAME. INSTALL NEW H.M. DOOR AND FRAME IN NEW CMU WALL. REMOVE AND REPLACE CMU AT LINTEL BEARING AT WALL TO REMAIN.
- REMOVE H.M. DOOR AND FRAME. BLOCK OPENING WITH 8" CONCRETE FOUNDATION WALL BELOW FLOOR WITH 8" CMU ABOVE FLOOR.
- NEW CONCRETE SLAB ON GRADE ON LEAN CONCRETE INFILL AT ABANDONED STAIR.
- ABANDONED EXISTING STAIR REMAINS.
- EXISTING CONCRETE FLOOR SLAB REMAINS. DRILL THROUGH SLAB AS REQUIRED FOR SOIL STABILIZATION.
- PERFORM CHEMICAL SOIL STABILIZATION BENEATH EXISTING SLAB ON GRADE AND STAIRWAY.
- REMOVE EXISTING STAIR.
- 5/8" GMB ON 6" METAL STUDS AT 16" O.C. WITH FULL THICKNESS SOUND ATTENUATION BLANKET. PROVIDE BACKING AS REQUIRED FOR ALL WALL MOUNTED EQUIPMENT. (ALTERNATE BID NO. 1)

ELEV. DEMO. NOTES

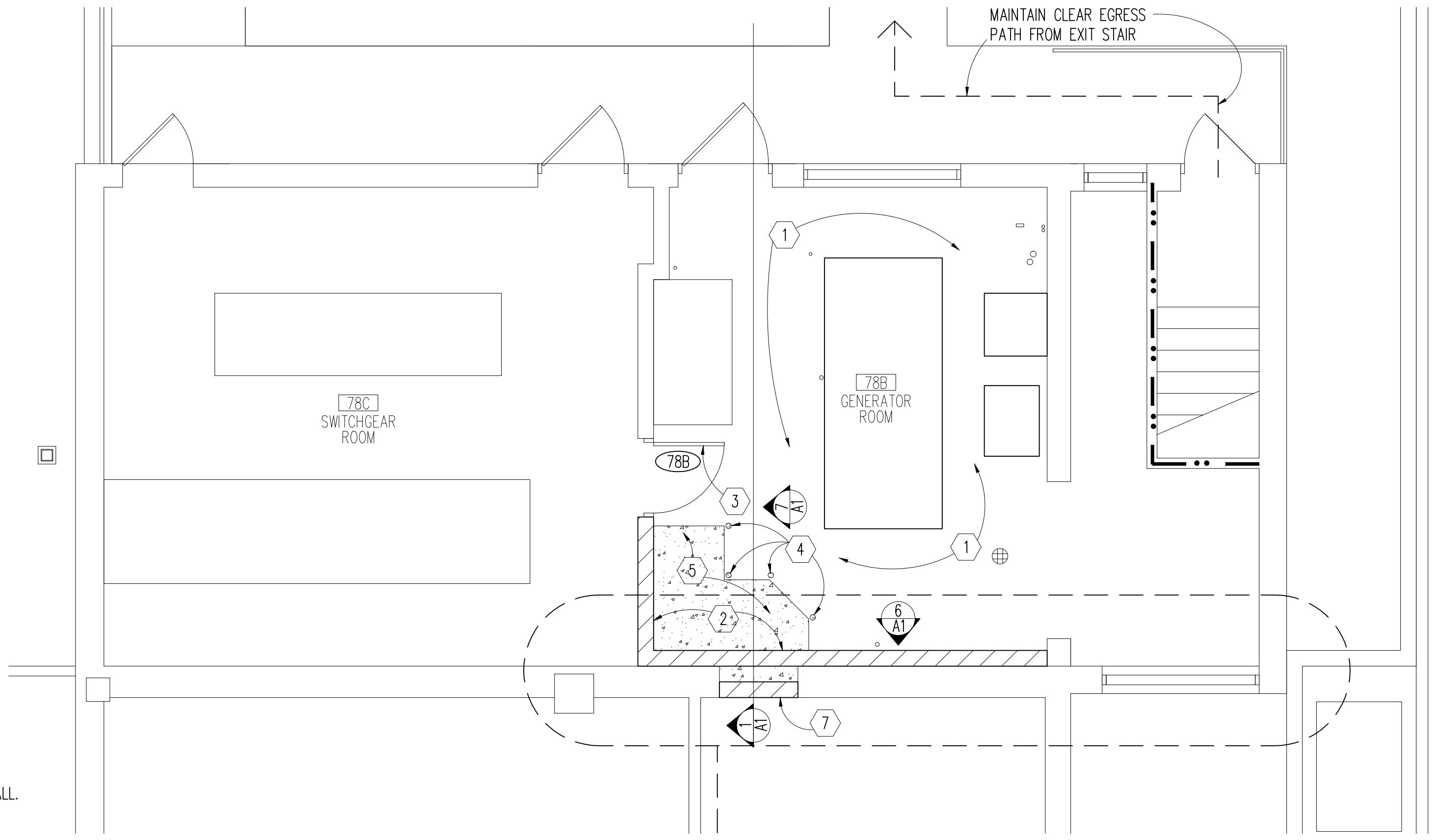
GENERAL:

- REFER TO MECHANICAL DRAWINGS FOR RELATED MECHANICAL DEMOLITION.
- REFER TO ELECTRICAL DRAWINGS FOR RELATED ELECTRICAL DEMOLITION.

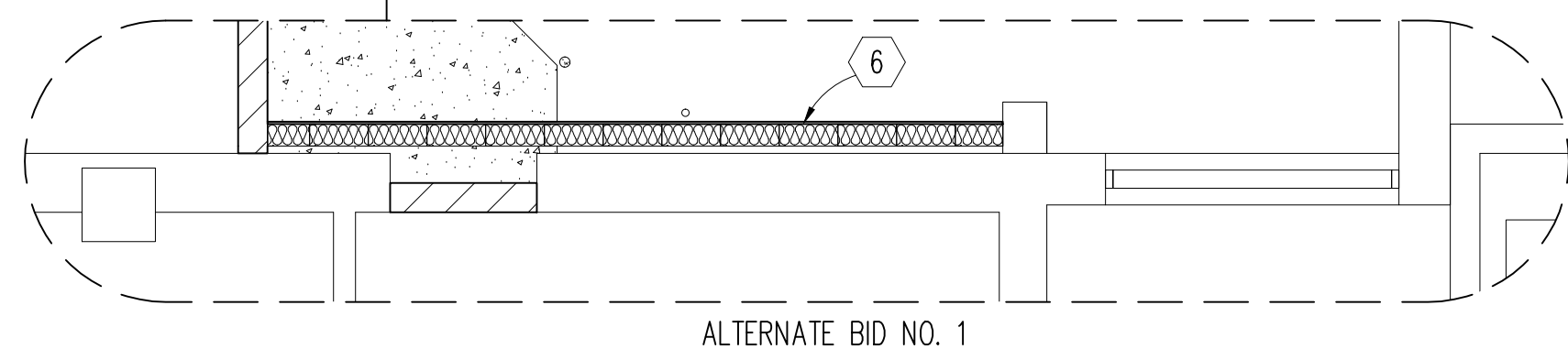
DEMOLITION SYMBOLS LEGEND

--- DEMOLITION AS INDICATED

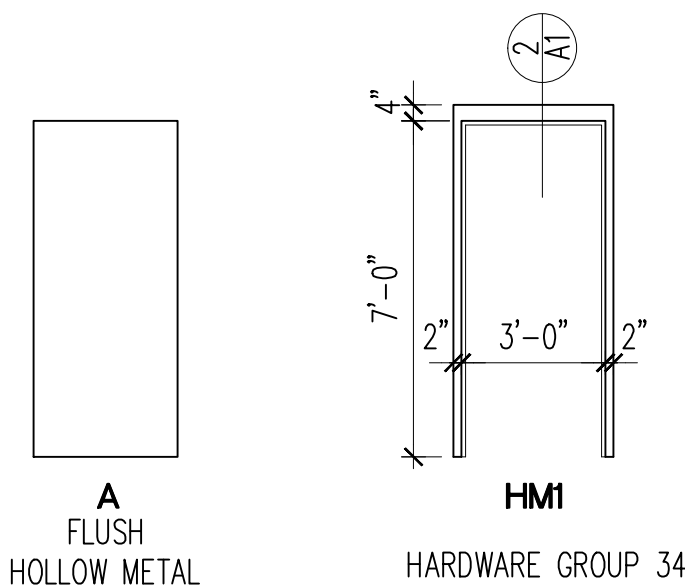
- REMOVE 8" CMU PARTITION.
- REMOVE DOOR AND FRAME.
- REMOVE METAL GUARDRAIL.
- REMOVE SIGNAGE. SALVAGE FOR REUSE.
- REMOVE WALL MOUNTED ACCESSORIES. SALVAGE FOR REUSE.
- REMOVE PLUMBING FIXTURE AND PIPING. SALVAGE FIXTURE FOR REUSE.
- REMOVE UNIT HEATERS. SALVAGE FOR REUSE.
- REMOVE ELECTRICAL PANELS/BOXES AND CONDUITS/WIRING. SALVAGE PANELS/BOXES. SEE ELECTRICAL FOR TEMPORARY CONNECTION AND REUSE.
- REMOVE THERMOSTAT. SALVAGE FOR REUSE.
- EXISTING SPRINKLER PIPE REMAINS. PROTECT FROM DAMAGE.
- THROUGH WALL CONDUIT REMAINS. PROTECT FROM DAMAGE.



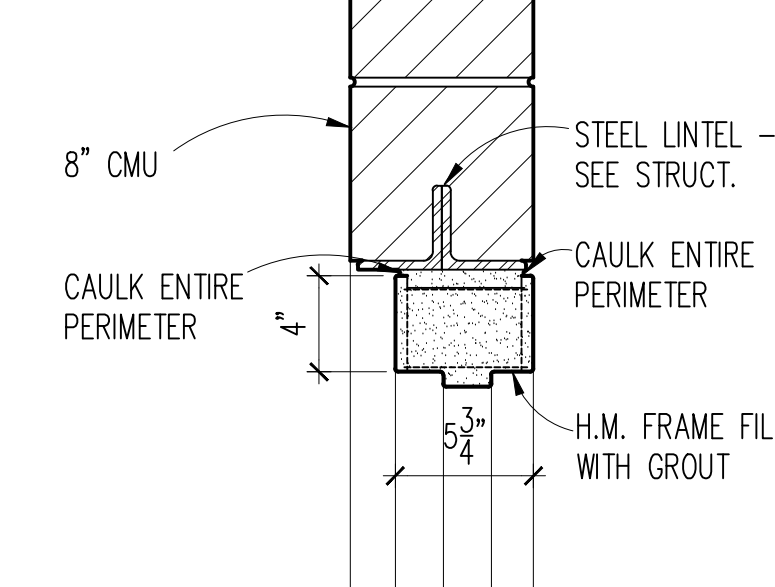
PARTIAL BASEMENT REMODELING PLAN
1/4"-1'-0"



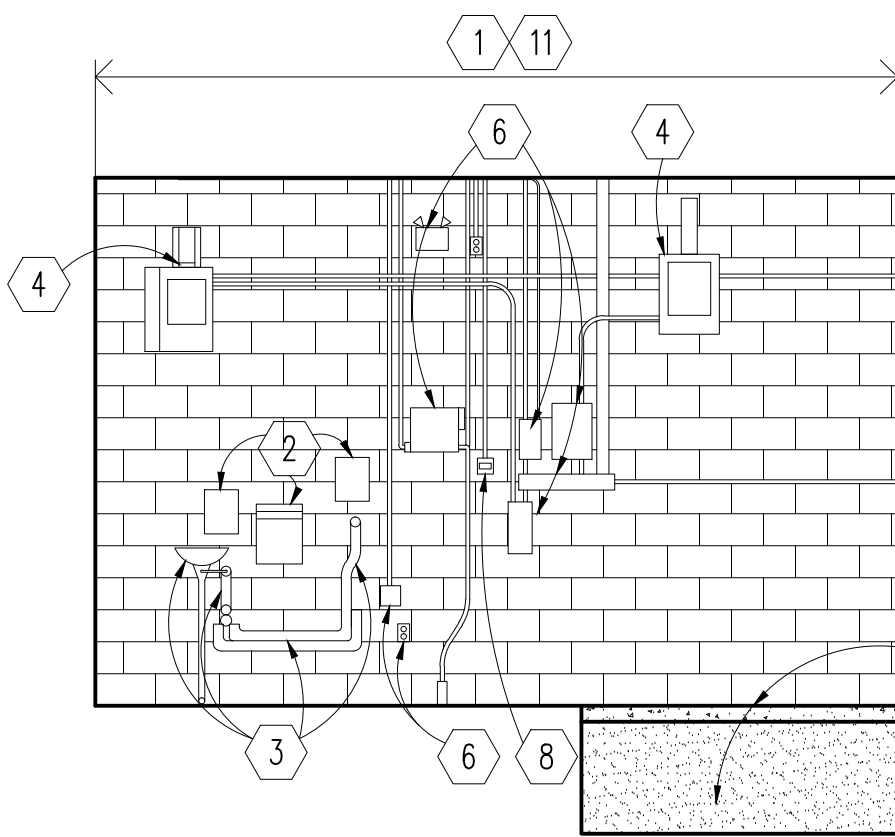
ALTERNATE BID NO. 1



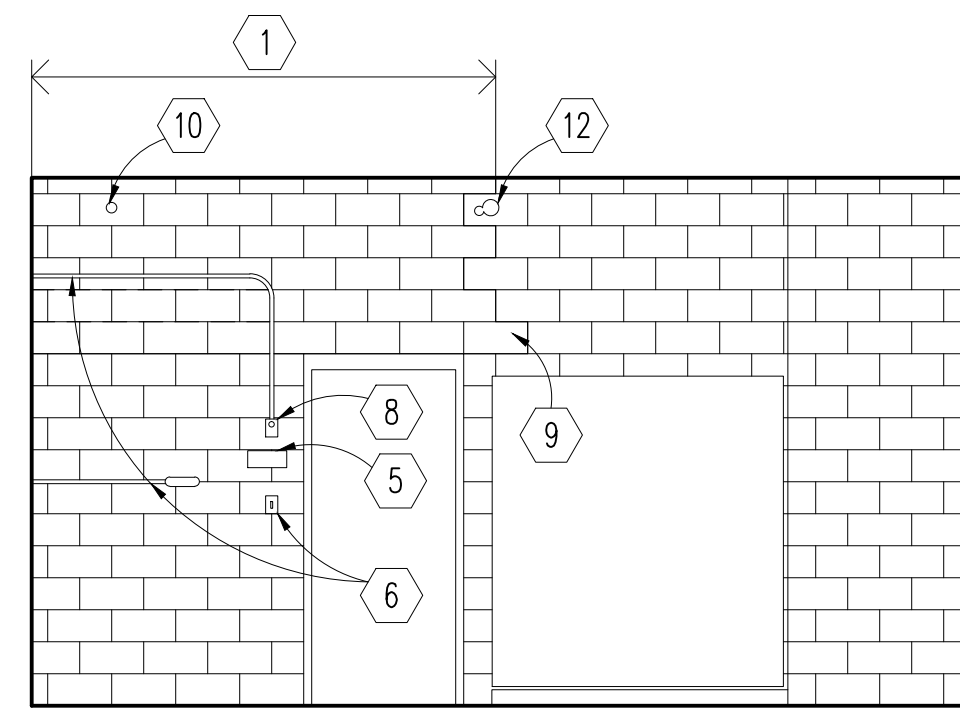
DOOR AND H.M. FRAME 78B ELEV.
1/4"-1'-0"



2
A1
H.M. FRAME - DOOR 78B
1/2"-1'-0"



6
A1
SOUTH ELEV. - REMODELING
1/4"-1'-0"



7
A1
WEST ELEV. - REMODELING
1/4"-1'-0"

PLAN REMOD. NOTES

GENERAL:

- REFER TO MECHANICAL DRAWINGS FOR RELATED MECHANICAL CONSTRUCTION.
- REFER TO ELECTRICAL DRAWINGS FOR RELATED ELECTRICAL CONSTRUCTION.

REMODELING SYMBOLS LEGEND

- PATCH TO MATCH SOIL STABILIZATION HOLES DRILLED THROUGH CONCRETE SLAB ON GRADE.
- 8" CMU PARTITION. EXTEND TO UNDERSIDE OF STRUCTURE ABOVE. FILL CELLS WITH SAND FOR SOUND CONTROL. PAINT COLOR: TO MATCH EXISTING. PAINT CORNER TO CORNER.
- 3'-0" x 7'-0" x 1 3/4" HOLLOW METAL STEEL DOOR WITH HOLLOW METAL FRAME. SEE DETAIL 2/A1
- PATCH TO MATCH REMOVED RAIL BOLT HOLES.
- NEW 4" CONCRETE SLAB ON GRADE ON VAPOR BARRIER ON LEAN CONCRETE INFILL AT ABANDONED STAIR.
- 5/8" GMB ON 6" METAL STUDS AT 16" O.C. WITH FULL THICKNESS SOUND ATTENUATION BLANKET. PROVIDE BACKING AS REQUIRED FOR ALL WALL MOUNTED EQUIPMENT. (ALTERNATE BID NO. 1)
- BLOCK OPENING WITH 8" CONCRETE FOUNDATION WALL BELOW FLOOR WITH 8" CMU ABOVE FLOOR.

ELEV. REMOD. NOTES

GENERAL:

- REFER TO MECHANICAL DRAWINGS FOR RELATED MECHANICAL CONSTRUCTION.
- REFER TO ELECTRICAL DRAWINGS FOR RELATED ELECTRICAL CONSTRUCTION.

REMODELING SYMBOLS LEGEND

- 8" CMU PARTITION. EXTEND TO UNDERSIDE OF STRUCTURE ABOVE. FILL CELLS WITH SAND FOR SOUND CONTROL. PAINT COLOR: TO MATCH EXISTING. PAINT CORNER TO CORNER.
- INSTALL SALVAGED ACCESSORIES.
- INSTALL SALVAGED PLUMBING FIXTURE AND NEW PIPING.
- INSTALL SALVAGED UNIT HEATERS.
- INSTALL SALVAGED SIGNAGE.
- INSTALL SALVAGED ELECTRICAL PANEL, BOXES AND NEW CONDUIT/WIRING CONDUITS.
- NEW 4" CONCRETE SLAB ON GRADE ON LEAN CONCRETE INFILL AT ABANDONED STAIR.
- INSTALL SALVAGED THERMOSTAT.
- REMOVE AND REPLACE CMU AT LINTEL BEARING AT WALL TO REMAIN.
- EXISTING SPRINKLER PIPE REMAINS THROUGH CMU WALL CONSTRUCTION. PROTECT FROM DAMAGE.
- 5/8" GMB ON 6" METAL STUDS AT 16" O.C. WITH FULL THICKNESS SOUND ATTENUATION BLANKET. PROVIDE BACKING AS REQUIRED FOR ALL WALL MOUNTED EQUIPMENT. (ALTERNATE BID NO. 1)
- THROUGH WALL CONDUIT REMAINS. PROTECT FROM DAMAGE.



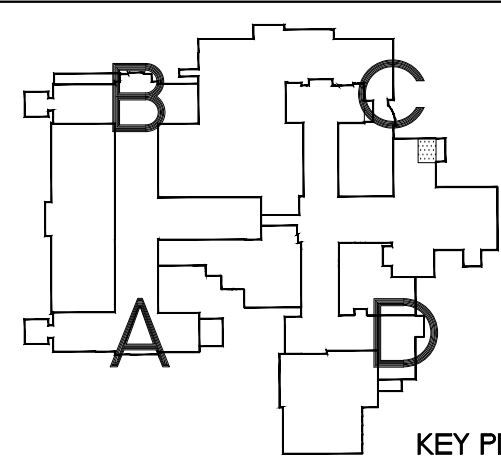
Dept. of Veterans Affairs
Medical Center
2101 Elm Street North
Fargo, ND 58102



IMAGE GROUP INC.
403 CENTER AVENUE, SUITE 300
MOORHEAD, MN 56560

IMAGE GROUP INC., Architecture & Interiors
SOLEN & LARSON ENGINEERING, Structural Engineers
OBERMILLER NELSON ENGINEERING, Mechanical Engineers
MEN ENGINEERING, Electrical Engineers

I hereby certify that this plan specification, or report was prepared by me or under my direct supervision, and that I am duly Registered Architect under the laws of the State of North Dakota.
Rebecca M. Mullen
Date: 4/27/2012 Reg. No. 378



Drawing Title
BASEMENT DEMOLITION AND
REMODELING PLANS

VA Project No.
437-12-135

Building No.
1

Contract No.
VA263-P-1217
VA263-C

AutoCAD File Name
PLAN_BASEDWG

Project Title
VA MEDICAL CENTER
BUILDING 1 EMERGENCY GENERATOR
ROOM STRUCTURAL REPAIRS

Designed By
RM

Location
VA MEDICAL CENTER
FARGO, ND

Checked By
RM

Drawn By
KS

Date
APRIL 27, 2012

Scale
AS SHOWN

Drawing No.
A1

Dwg 2 of 5

