

RFI 88

DUCT WORK MODIFICATIONS

RTU NOTES:

09/14/2011

1. RELOCATE RTU-2 TOWARDS EAST ENOUGH TO CLEAR STRUCTURAL BEAM. ENSURE THAT SUPPLY FLENUM AND WRAP INSULATION CLEAR BEAM. MECHANICAL CONTRACTOR TO COORDINATE FIELD PRIOR TO ROUGH-IN.

KEYED NOTES

09/14/2011

09/14/2011

09/14/2011

- 1 30 X 30 SUPPLY AND RETURN AIR DUCTS UP TO ROOFTOP CONNECTION. PROVIDE TRANSITIONS AND FLEXIBLE CONNECTIONS AT UNIT.
- 2 22 X 34 SUPPLY AIR AND 32 X 34 RETURN AIR DUCTS UP TO ROOFTOP CONNECTION. PROVIDE TRANSITIONS AND FLEXIBLE CONNECTIONS AT UNIT.
- 3 36 X 12 SUPPLY AIR DUCT DOWN IN CHASE.
- 4 44 X 14 RETURN AIR DUCT DOWN IN CHASE.
- 5 14 X 14 EXHAUST DUCT DOWN IN CHASE.
- 6 18 X 12 EXHAUST DUCT UP TO FAN CONNECTION. PROVIDE TRANSITION AND FLEXIBLE CONNECTION AT FAN.
- 7 12 X 14 EXHAUST DUCT UP TO FAN CONNECTION. PROVIDE TRANSITION AND FLEXIBLE CONNECTION AT FAN.
- 8 14 X 12 SUPPLY AIR DUCT DOWN IN CHASE.
- 9 26 X 14 SUPPLY AIR DUCT DOWN IN CHASE.
- 10 32 X 18 RETURN AIR DUCT DOWN IN CHASE.
- 11 LOCATED CONDENSATE DRAIN LINE (FROM ROOF) DOWN IN WALL TO MOP SINK. END OF PIPE TO BE PROVIDED WITH 90° ELBOW (FACING DOWNWARDS). TERMINATE 6" ABOVE MOP SINK.
- 12 30"x30" CEILING ACCESS FOR EQUIPMENT SERVICE.
- 13 12 X 12 EXHAUST DUCT DOWN IN CHASE.
- 14 ROUTE SUPPLY DUCTWORK UP THRU TRUSS SYSTEM THEN BACK DOWN TO VAV 4-1.

- 7 FIRE DAMPERS TO BE RELOCATED AT FLOOR PENETRATIONS
- 8 HEAT TRACE NOT REQUIRED FOR CHILLED WATER PIPING. PIPE WILL BE INSULATED AND INSTALLED WITH METAL JACKET.
- 9 X210 CEILING FIRE DAMPER LOCATE TO EXHAUST DUCT PENETRATING WALL BETWEEN ROOM X210 & X204.

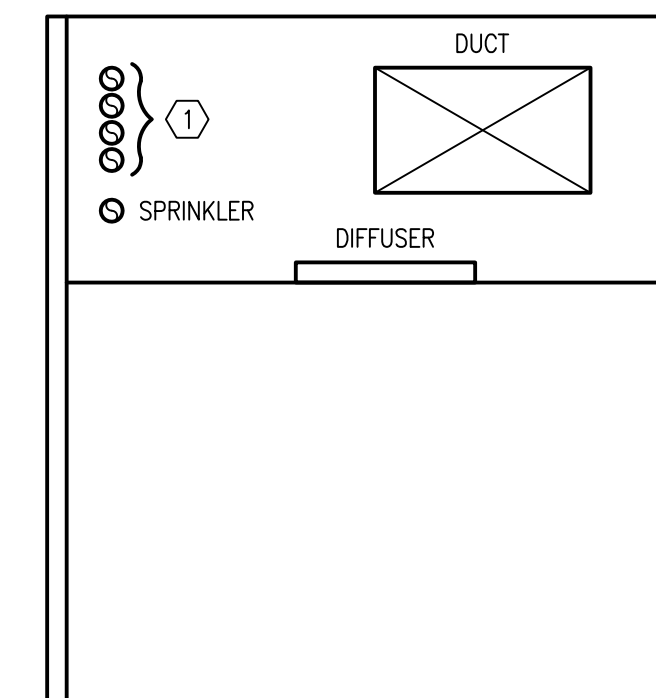
09/14/2011

KEEP TOP OF DUCT AS HIGH AS POSSIBLE THRU TRANSITION

2

DUCT TRANSITION DETAIL

NOT TO SCALE



KEYED NOTES

- 1 STACK CHS/CHR & HVE/HWR VERTICALLY WHEN POSSIBLE OR RUN PIPE WITHIN TRUSS SYSTEM.

3

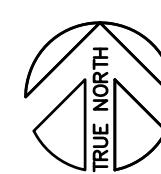
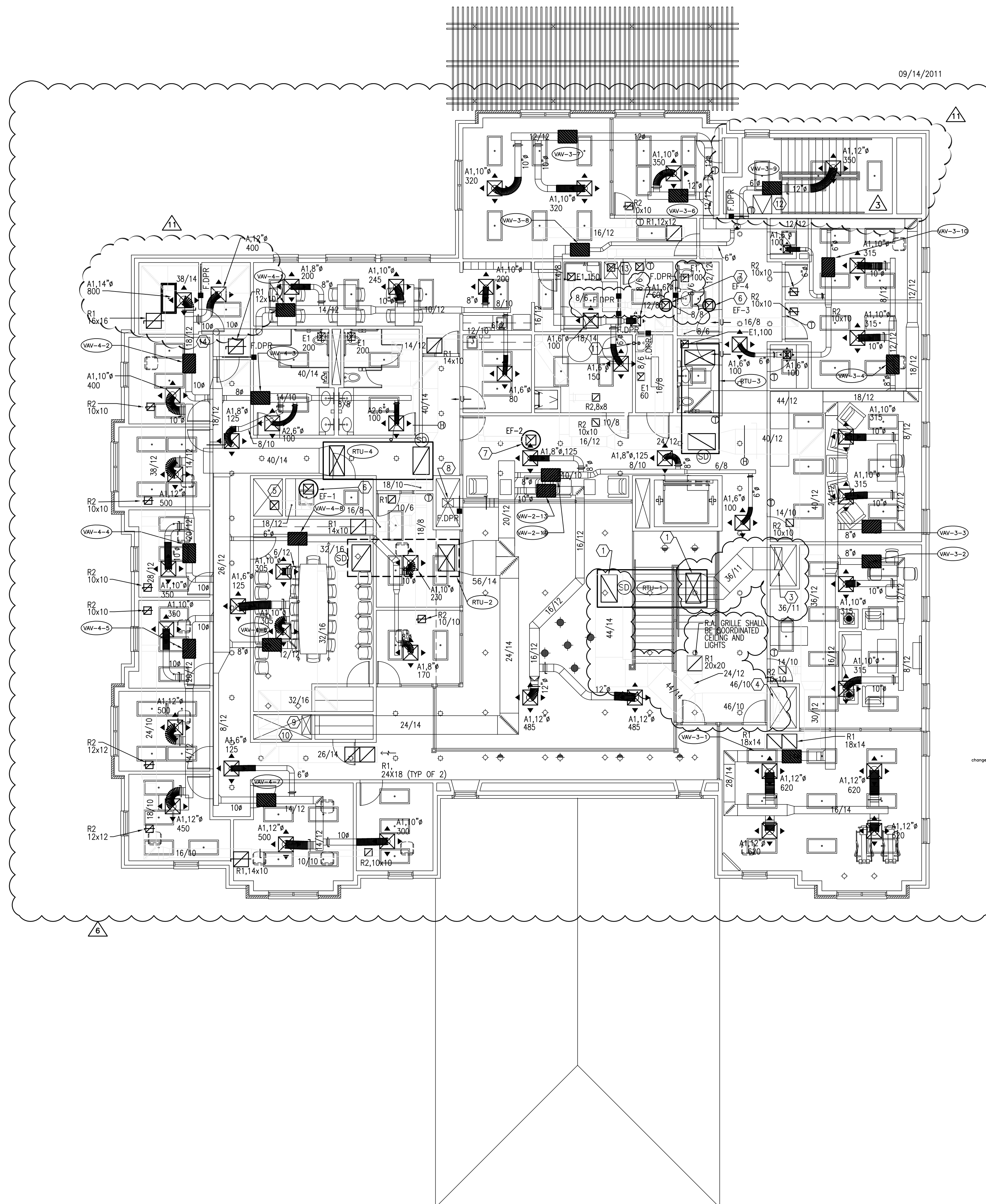
ELEVATION REFERENCE DETAIL

NOT TO SCALE

RECORD DRAWINGS

DATE: NOVEMBER 18, 2012

THESE AS-BUILT DOCUMENTS HAVE BEEN PREPARED BASED ON INFORMATION PROVIDED BY THE CONTRACTOR JORDAN GENERAL CONTRACTORS, LTD. THE ARCHITECT/ENGINEER HAS NOT VERIFIED THE ACCURACY AND/OR COMPLETENESS OF THIS INFORMATION AND SHALL NOT BE RESPONSIBLE FOR ANY ERRORS OR OMISSIONS THAT MAY BE INCORPORATED AS RESULT OF INCORRECT INFORMATION PROVIDED BY THE CONTRACTOR.



1

SECOND FLOOR MECHANICAL PLAN

SCALE: 1/8" = 1'-0"

ARCHITECT:

WESTEAST DESIGN GROUP



1617 E. COMMERCE ST., SUITE 7102, SAN ANTONIO, TEXAS 78205 USA
210.530.0755 FAX: 210.530.9427

These documents can not be copied or reproduced without written consent from WestEast Design Group

Drawing Title

SECOND FLOOR MECHANICAL PLAN

Approved: Project Director

Project Title

POLYTRAUMA
TRANSITIONAL
HOUSING

Location

Audie L. Murphy Memorial Veterans Hospital
San Antonio, Texas

Date

28 JULY 2010

Checked

Drawn

Project Number

671-237

Building Number

1

Drawing Number

MH1.2

Dwg. 3 of 10

Office of
Facilities
Management



AMENDMENT NO.	DATE
1	31/08/2010
2	04/04/11
3	04/04/11
4	04/04/11
5	04/04/11
6	04/04/11
7	04/04/11
8	04/04/11
9	04/04/11
10	04/04/11
11	04/04/11
12	04/04/11
13	04/04/11
14	04/04/11
15	04/04/11
16	04/04/11
17	04/04/11
18	04/04/11
19	04/04/11
20	04/04/11
21	04/04/11
22	04/04/11
23	04/04/11
24	04/04/11
25	04/04/11
26	04/04/11
27	04/04/11
28	04/04/11
29	04/04/11
30	04/04/11
31	04/04/11
32	04/04/11
33	04/04/11
34	04/04/11
35	04/04/11
36	04/04/11
37	04/04/11
38	04/04/11
39	04/04/11
40	04/04/11
41	04/04/11
42	04/04/11
43	04/04/11
44	04/04/11
45	04/04/11
46	04/04/11
47	04/04/11
48	04/04/11
49	04/04/11
50	04/04/11
51	04/04/11
52	04/04/11
53	04/04/11
54	04/04/11
55	04/04/11
56	04/04/11
57	04/04/11
58	04/04/11
59	04/04/11
60	04/04/11
61	04/04/11
62	04/04/11
63	04/04/11
64	04/04/11
65	04/04/11
66	04/04/11
67	04/04/11
68	04/04/11
69	04/04/11
70	04/04/11
71	04/04/11
72	04/04/11
73	04/04/11
74	04/04/11
75	04/04/11
76	04/04/11
77	04/04/11
78	04/04/11
79	04/04/11
80	04/04/11
81	04/04/11
82	04/04/11
83	04/04/11
84	04/04/11
85	04/04/11
86	04/04/11
87	04/04/11
88	04/04/11
89	04/04/11
90	04/04/11
91	04/04/11
92	04/04/11
93	04/04/11
94	04/04/11
95	04/04/11
96	04/04/11
97	04/04/11
98	04/04/11
99	04/04/11
100	04/04/11

CONSULTANTS:

TEXAS REGISTERED
ENGINEERING FIRM F-10487
700 N. ST. MARY'S
SUITE 1225
SAN ANTONIO, TX 78205
WWW.RDMENGINEERING.NET
PHONE: 210.299.4522
FAX: 210.299.4525

Revisions

RFI 137
RFI 088

Approved: Assistant Director

Approved: Service Chief

Approved: Chief, Bldg

Approved: Chief, IT

Approved: Chief, Safety

Approved: Chief of Staff

Approved: Service Chief

Approved: Chief, EMS

Approved: Chief, M & O

Approved: Chief

Approved: Chief, Engineering

Approved: Service Chief

Approved: Chief, Infection Control

Approved: Chief, Police

Approved: Chief