

GENERAL NOTES

- 1. ALL WORK SHALL BE PERFORMED IN ACCORDANCE WITH THE 2008 INTERNATIONAL CODES AND THE REQUIREMENTS STATED IN THE APPLICABLE SECTIONS OF THE CURRENT NATIONAL FIRE CODES (NFPA STANDARDS). AMENDMENTS TO THESE CODES AS SET FORTH BY THE AUTHORITY HAVING JURISDICTION SHALL SUPERSEDE THE INTERNATIONAL CODES AND NFPA STANDARDS AS ISSUED.
- 2. COOPERATE FULLY WITH SEPARATE CONTRACTORS SO WORK ON THOSE CONTRACTS MAY BE CARRIED OUT SMOOTHLY, WITHOUT INTERFERING WITH OR DELAYING WORK UNDER THIS CONTRACT. COORDINATE THE WORK OF THIS CONTRACT WITH WORK PERFORMED UNDER SEPARATE CONTRACTS.
- 3. SUPERVISE CONSTRUCTION OPERATIONS TO ASSURE THAT ALL WORK IS INSTALLED IN ACCORDANCE WITH THE CONSTRUCTION DOCUMENTS.
- 4. BRANCH CIRCUITS EXTENDING BEYOND 100' IN LENGTH FROM THE PANELBOARD TO THE FINAL TERMINATING POINT SHALL BE AT MINIMUM #10 AWG COPPER CONDUCTORS.

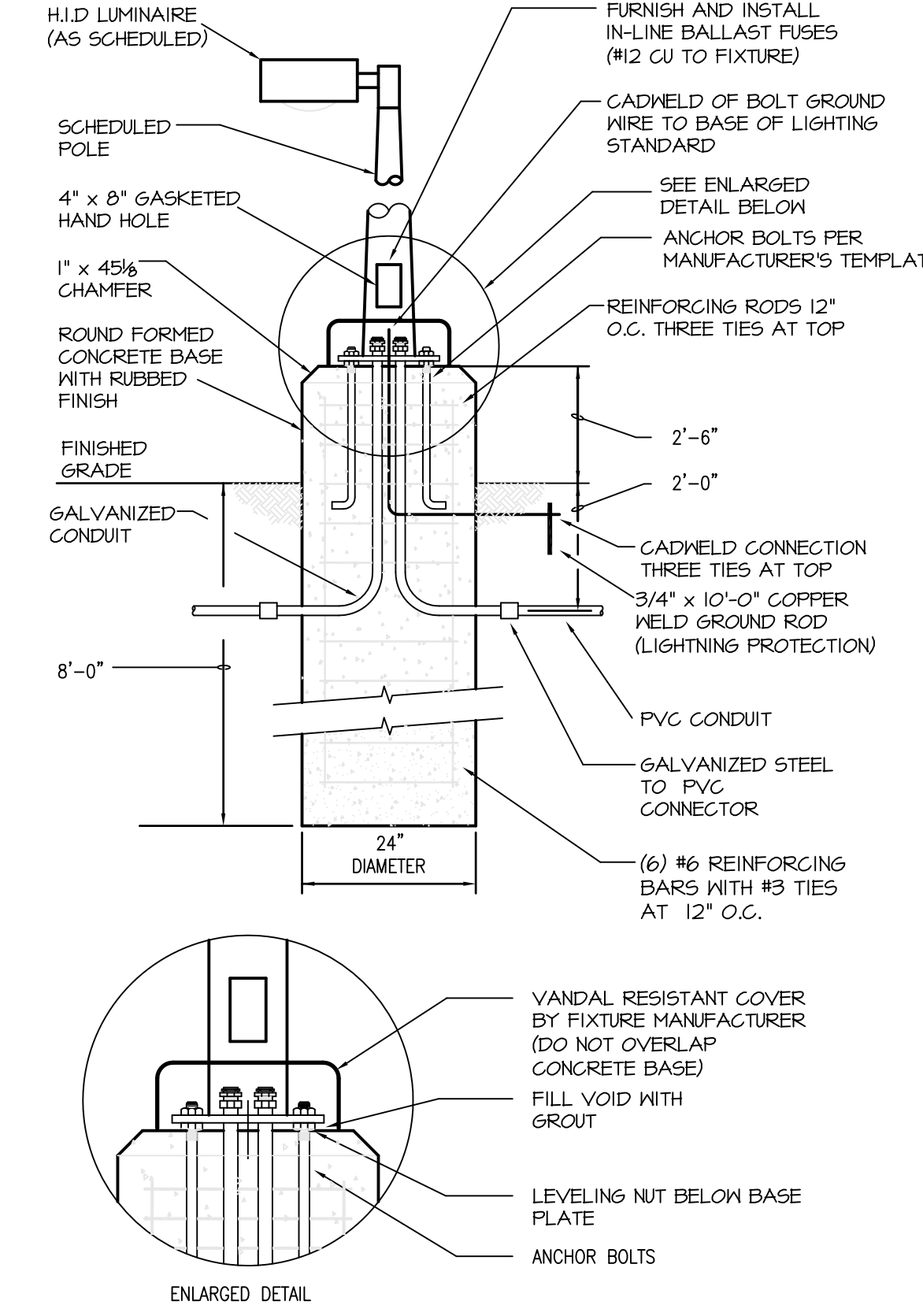
KEYED NOTES

- 1 PROPOSED LOCATION FOR THE NEW PAD MOUNT TRANSFORMER FURNISHED AND INSTALLED BY THE CPS ENERGY. THE CONCRETE PAD SHALL BE FURNISHED AND INSTALLED BY THE CONTRACTOR IN ACCORDANCE WITH CPS ENERGY STANDARDS. REFERENCE THE ONE-LINE DIAGRAM ON SHEET ES6.1 FOR THE WIRING REQUIREMENTS OF THE TRANSFORMER.
- 2 FURNISH AND INSTALL THE SECONDARY SERVICE LATERAL 36" BELOW GRADE ENCASED BY 2" OF CONCRETE ON ALL SIDE. REFERENCE THE ONE-LINE DIAGRAM ON SHEET ES6.1 FOR SIZE AND OTHER ROUTING REQUIREMENTS.
- 3 FURNISH AND INSTALL THE FEEDER CIRCUITS SUPPLY THE PACKAGED AIR COOLED CHILLER PLANT AND THE BOILER PLANT. ROUTE THE FEEDER CIRCUITS 24" BELOW GRADE. REFERENCE THE ONE-LINE DIAGRAM ON SHEET ES6.1 FOR THE FEEDER CIRCUITS SIZE AND OVERCURRENT PROTECTION REQUIREMENTS.
- 4 THE EXACT LOCATION OF THE NEW DUCTLINE SHALL BE COORDINATED WITH CPS ENERGY PRIOR TO ROUGH-IN. IT IS THE CONTRACTOR'S RESPONSIBILITY TO CONTACT CPS ENERGY TO DETERMINE THE EXACT LOCATION OF THE NEW RISER POLE SO THAT THE STUB-UP LOCATION OF THE DUCTLINE CONDUITS ARE IN ACCORDANCE WITH CPS ENERGY STANDARDS.
- 5 FURNISH AND INSTALL (2) 4" CONDUITS WITH PULL STRING TO HOUSE THE TELE/DATA AND CATV SERVICE CABLES. ROUTED THE CONDUITS 36" BELOW GRADE ENCASED IN 2" OF CONCRETE ON ALL SIDE. COORDINATE THE STUB-UP LOCATION AT THE RISER POLE WITH THE TELE/DATA AND CATV PURVEYORS PRIOR TO ROUGH-IN. REFERENCE DETAIL 3 ON SHEET ES4.1 FOR THE STUB-UP LOCATION INSIDE OF THE MECHANICAL SHAFT AND DETAIL 4 ON SHEET ES4.1 FOR THE CONDUITS CONTINUATION INTO THE SECOND FLOOR.
- 6 FURNISH AND INSTALL THE DUPLEX RECEPTACLE AND THE BRANCH CIRCUIT INDICATED TO SERVE AS THE HVAC REQUIRED MAINTENANCE OUTLET. SUPPORT THE OUTLET FROM THE STRUCTURAL MEMBERS OF THE CHAIN LINK FENCE.
- 7 FURNISH AND INSTALL 1" CONDUIT UNDERGROUND BACK TO NURSE STATION ROOM 101-2.

RECORD DRAWINGS

DATE: NOVEMBER 16, 2012

THESE AS-BUILT DOCUMENTS HAVE BEEN PREPARED BASED ON INFORMATION PROVIDED BY THE CONTRACTOR LORENZ GENERAL CONTRACTORS, LTD. THE ARCHITECT/ENGINEER HAS NOT VERIFIED THE ACCURACY AND/OR COMPLETENESS OF THIS INFORMATION AND SHALL NOT BE RESPONSIBLE FOR ANY ERRORS OR OMISSIONS THAT MAY BE INCORPORATED AS RESULT OF INCORRECT INFORMATION PROVIDED BY THE CONTRACTOR.



NOTE: THE CONCRETE POUR SHALL BE MONOLITHIC.

CONCRETE POLE DETAIL

SCALE: NOT TO SCALE

ELECTRICAL SITE UTILITY PLAN

SCALE: 1" = 20'-0"

ADDENDUM #2	05/21/10
ASI #1	04/04/11
ASI #8	04/04/11
RFI #22	04/28/11
RFI #43	07/14/11
RFI #35	07/08/11
RFI #36	07/08/11
RFI #39	09/21/11
RFI #44	07/06/11
Revisions	Date

CONSULTANTS:	
TEXAS REGISTERED ENGINEERING FIRM P-10487 700 N. ST. MARY'S SUITE 1225 SAN ANTONIO, TX 78205 WWW.RDMENGINEERING.NET PHONE: 210.299.4522 FAX: 210.299.4525	
RFI #017 & #018	04/07/11

Approved: Assistant Director	Approved: Chief of Staff	Approved: Chief, Engineering
Approved: Service Chief	Approved: Service Chief	Approved: Service Chief
Approved: Chief, Biomed	Approved: Chief, EMS	Approved: Chief, Infection Control
Approved: Chief, IT	Approved: Chief, M & O	Approved: Chief, Police
Approved: Chief, Safety	Approved: Chief	Approved: Chief

ARCHITECT:
WESTEAST DESIGN GROUP
1617 E. COMMERCE ST., SUITE 7102, SAN ANTONIO, TEXAS 78205 USA 210.530.0755 FAX 210.530.9427
These documents can not be copied or reproduced without written consent from WestEast Design Group

Drawing Title
ELECTRICAL SITE UTILITY PLAN
Approved: Project Director

Project Title
POLYTRAUMA TRANSITIONAL HOUSING
Location Audie L. Murphy Memorial Veterans Hospital San Antonio, Texas
Date 28 JULY 2010
Checked
Drawn

Project Number 671-237
Building Number 1
Drawing Number ES21
Dwg. 2 of 11

Office of Facilities Management
Department of Veterans Affairs