

three inches = one foot  
one and one half inches = one foot  
one inch = one foot  
three quarters inch = one foot  
one half inch = one foot  
three eighths inch = one foot  
one quarter inch = one foot  
one eighth inch = one foot

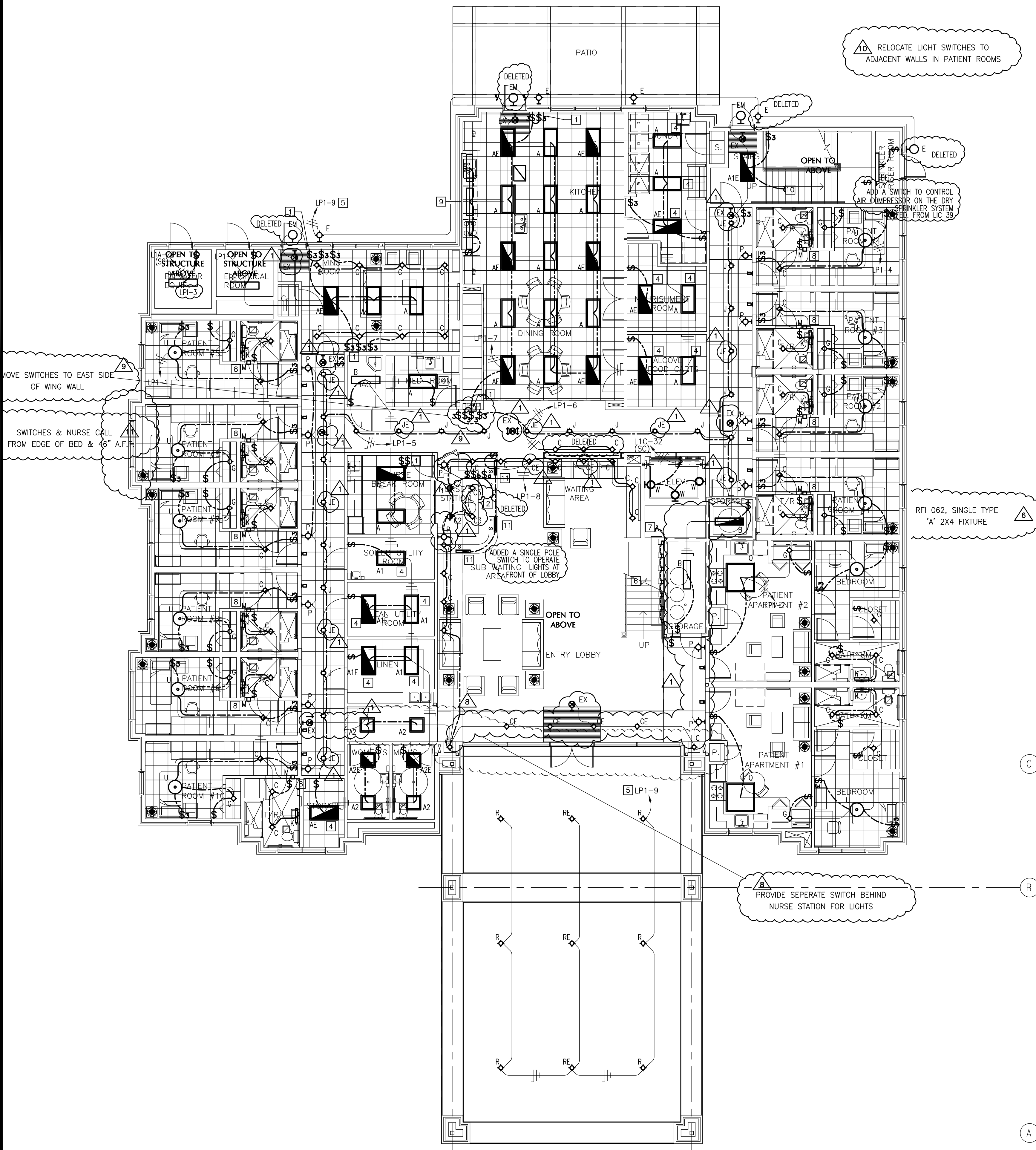
GENERAL NOTES

1. ALL WORK SHALL BE PERFORMED IN ACCORDANCE WITH THE 2006 INTERNATIONAL CODES AND THE REQUIREMENTS STATED IN THE APPLICABLE SECTIONS OF THE CURRENT NATIONAL FIRE CODES (NFA STANDARDS). AMENDMENTS TO THESE CODES AS SET FORTH BY THE AUTHORITY HAVING JURISDICTION SHALL SUPERSEDE THE INTERNATIONAL CODES AND NFA STANDARDS AS ISSUED.
2. COOPERATE FULLY WITH SEPARATE CONTRACTORS SO WORK ON THOSE CONTRACTS MAY BE CARRIED OUT SMOOTHLY, WITHOUT INTERFERING WITH OR DELAYING WORK UNDER THIS CONTRACT. COORDINATE THE WORK OF THIS CONTRACT WITH WORK PERFORMED UNDER SEPARATE CONTRACTS.
3. THE DRAWINGS ARE DIAGRAMMATIC ONLY AND SHALL NOT BE SCALED. THE INSTALLER IS RESPONSIBLE FOR COORDINATING WITH OTHER TRADES. THE INSTALLER SHALL NOT INSTALL OR FABRICATE ANY WORK SHOWN UNTIL ALL SUCH WORK IS FULLY COORDINATED.
4. SUPERVISE CONSTRUCTION OPERATIONS TO ASSURE THAT ALL WORK IS INSTALLED IN ACCORDANCE WITH THE CONSTRUCTION DOCUMENTS.
5. IT SHALL BE THE RESPONSIBILITY OF THE CONTRACTOR TO RELOCATE TO THE PROPER SIDE OF THE DOOR ANY SWITCH, RECEPTACLE OR DEVICE BEING AFFECTED BY ANY CHANGE IN DIRECTION OF DOOR SWINGS AS SHOWN ON THE ARCHITECTURAL FLOOR PLAN.
6. REFER TO ARCHITECTURAL REFLECTED CEILING PLANS FOR EXACT LOCATIONS OF THE LUMINAIRES, CEILING DIFFUSERS, REGISTERS, AND GRILLES.
7. IN ALL AREAS THE GENERAL CONTRACTOR SHALL BE RESPONSIBLE FOR COORDINATION BETWEEN THE ELECTRICAL AND MECHANICAL TRADES TO PROVIDE CLEARANCE ABOVE CEILING BETWEEN RECESSED LIGHTING FIXTURES AND THERMAL INSULATION OR DUCTWORK IN ACCORDANCE WITH THE NEC, PARAGRAPH 410-66.
8. BRANCH CIRCUITS EXTENDING BEYOND 100' IN LENGTH FROM THE PANELBOARD TO THE FINAL TERMINATING POINT SHALL BE AT MINIMUM #10 AWG COPPER CONDUCTORS.

KEYED NOTES

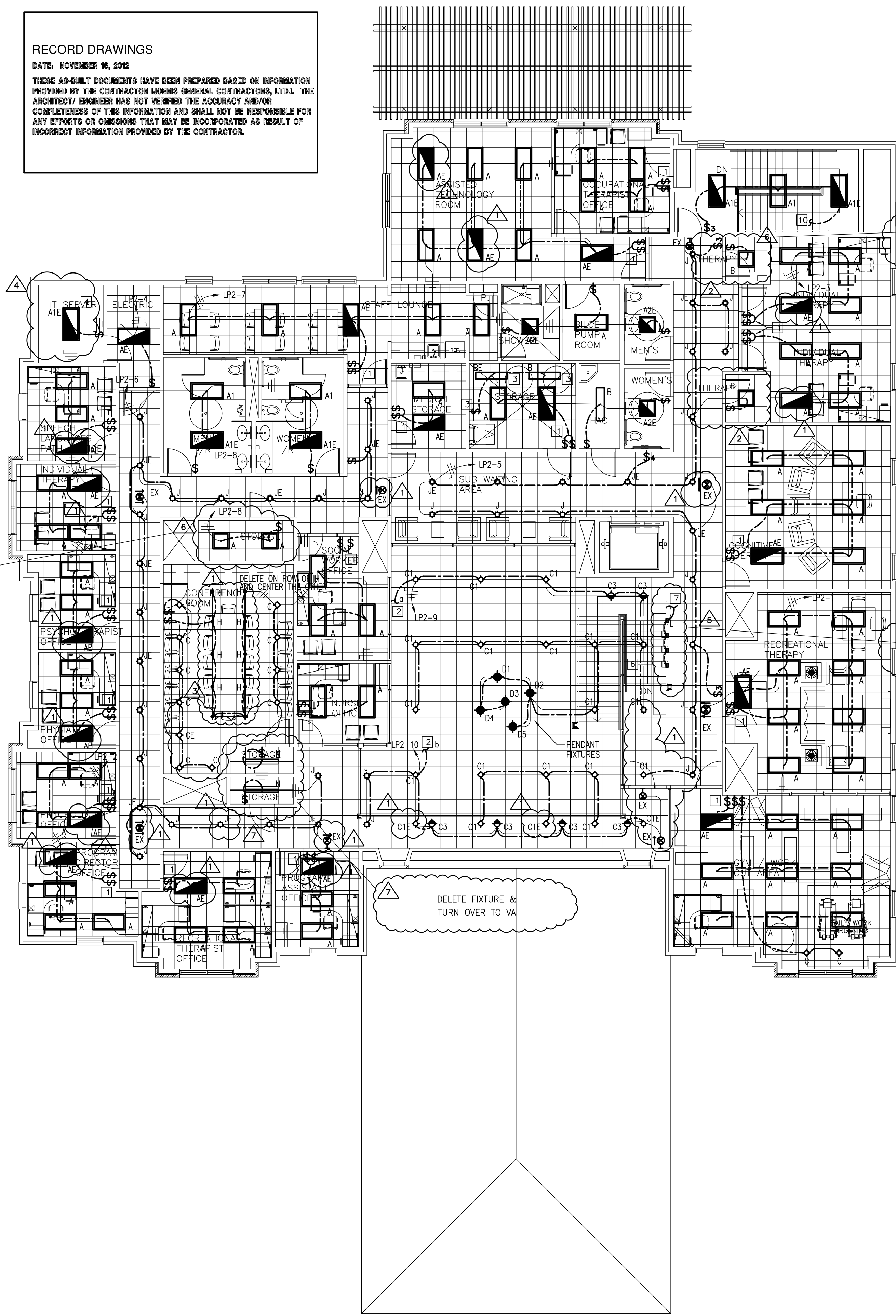
1. FURNISH AND INSTALL TWO SWITCHES GANGED UNDER A COMMON SWITCH PLATE COVER FOR B-LEVEL SWITCHING BOTH SWITCHES IN THE "ON" POSITION SHALL PROVIDE 100% LIGHT LEVELS. ANYONE OF THE TWO SWITCHES IN THE "OFF" POSITION SHALL PROVIDE 50% LIGHT LEVELS. 2#12, #12 GND, 3/4".
2. FURNISH AND INSTALL THE LIGHTING CONTROL CIRCUITS. ROUTE THE CONTROL CIRCUITS FROM THE LUMINAIRES TO THE SINGLE POLE SWITCHES LOCATED AT THE NURSE STATION; 2#12, #12GND, 3/4". THE LOWER CASE LETTERS INDICATE THE CORRESPONDING CONTROL CIRCUIT WITH THE CORRESPONDING SINGLE POLE SWITCH. GANG THE THREE SINGLE POLE SWITCHES UNDER A COMMON SWITCH PLATE COVER.
3. INSTALL THE LIGHT SWITCH AND TYPE "B" LUMINAIRES IN THE ATTIC SPACE ABOVE STORAGE ROOM X211. LOCATE THE LUMINAIRES SUCH THAT MAXIMUM LIGHT LEVELS ARE MAINTAINED. SUPPORT THE LUMINAIRES FROM THE ATTIC SPACE STRUCTURAL MEMBERS.
4. THE 2X4 LUMINAIRE IN THIS ROOM DOES NOT REQUIRE A STEP-DIMMING BALLAST.
5. ROUTE THE EXTERIOR LIGHTING CONTROL CIRCUIT VIA THE LIGHTING CONTROL PANEL; 2#12, #12 GND, 1/2". REFERENCE DETAIL 3 ON SHEET ES6.1 FOR THE LIGHTING CONTROL PANEL WIRING REQUIREMENTS.
6. COORDINATE THE EXACT LOCATION OF THE RECESSED STAIR LUMINAIRES WITH THE ARCHITECTURAL ELEVATIONS PRIOR TO ROUGH-IN.
7. EXTEND THE LIGHTING CONTROL CIRCUIT SERVING THE RECESSED STAIR LUMINAIRES FROM THE FIRST FLOOR TO THE SECOND FLOOR LANDING; 2#12, #12 GND, 1/2".
8. THE LUMINAIRES TYPE "M" SHALL BE CONNECTED TO AN UNSWITCHED HOT LEG OF THE LIGHTING CIRCUIT SUPPLYING THE LUMINAIRES IN THE ROOM; 2#12, #12 GND, 1/2".
9. THE LUMINAIRES TYPE "T" SHALL BE MOUNTED AND EQUALLY SPACED ABOVE THE CABINETS. THE TOGGLE SWITCH CONTROLLING THE LUMINAIRES SHALL BE MOUNTED ABOVE THE COUNTER ADJACENT TO THE REFRIGERATOR.
10. EXTEND THE LIGHTING CONTROL CIRCUIT SERVING THE STAIR LUMINAIRES FROM THE FIRST FLOOR TO THE SECOND FLOOR LANDING; 2#12, #12 GND, 1/2".
11. FURNISH AND INSTALL THE UNDERCABINET LUMINAIRES TYPE "S" AND SUPPLY TO THE MILLWORK OF THE NURSE'S STATION.

RECORD DRAWINGS  
DATE: NOVEMBER 16, 2012  
THESE AS-BUILT DOCUMENTS HAVE BEEN PREPARED BASED ON INFORMATION PROVIDED BY THE CONTRACTOR LADDER GENERAL CONTRACTORS, LTD. THE ARCHITECT/ENGINEER HAS NOT VERIFIED THE ACCURACY AND/OR COMPLETENESS OF THIS INFORMATION AND SHALL NOT BE RESPONSIBLE FOR ANY ERRORS OR OMISSIONS THAT MAY BE INCORPORATED AS RESULT OF INCORRECT INFORMATION PROVIDED BY THE CONTRACTOR.



ELECTRICAL LIGHTING FLOOR PLAN - FIRST FLOOR

SCALE: 1/8" = 1'-0"



ELECTRICAL LIGHTING FLOOR PLAN - SECOND FLOOR

SCALE: 1/8" = 1'-0"

<div>AS1 #104/04/11</div> <div>AS1 #204/04/11</div> <div>AS1 #404/04/11</div> <div>AS1 #1402/08/12</div> <div>RF1 #14307/18/11</div> <div>RF1 #6206/23/11</div> <div>RF1 #11501/10/12</div> <div>RF1 #11412/14/11</div> <div>Revisions</div>		<div>CONSULTANTS:</div> <div>TEXAS REGISTERED ENGINEERING FIRM P-10487</div> <div>700 N. ST. MARY'S SUITE 1225</div> <div>SAN ANTONIO, TX 78205</div> <div>WWW.RDMENGINEERING.NET</div> <div>PHONE: 210.299.4522</div> <div>FAX: 210.299.4525</div> <div>11/17/11</div>		<div>Approved: Assistant Director</div> <div>Approved: Chief of Staff</div> <div>Approved: Chief, Engineering</div> <div>Approved: Service Chief</div> <div>Approved: Service Chief</div> <div>Approved: Service Chief</div> <div>Approved: Chief, Biomed</div> <div>Approved: Chief, EMS</div> <div>Approved: Chief, Infection Control</div> <div>Approved: Chief, IT</div> <div>Approved: Chief, M &amp; O</div> <div>Approved: Chief, Police</div> <div>Approved: Chief, Safety</div> <div>Approved: Chief</div> <div>Approved: Chief</div>			<div>ARCHITECT:</div> <div>WESTEAST DESIGN GROUP</div> <div>1617 E. COMMERCE ST., SUITE 7102, SAN ANTONIO, TEXAS 78205 USA</div> <div>210.530.0755 FAX 210.530.9427</div> <div>These documents can not be copied or reproduced without written consent from WestEast Design Group</div>		<div>Drawing Title</div> <div>ELECTRICAL FIRST AND SECOND LIGHTING FLOOR PLANS</div> <div>Approved: Project Director</div>		<div>Project Title</div> <div>POLYTRAUMA TRANSITIONAL HOUSING</div> <div>Location</div> <div>Audie L. Murphy Memorial Veterans Hospital</div> <div>San Antonio, Texas</div> <div>Date</div> <div>28 JULY 2010</div> <div>Checked</div> <div>Drawn</div>		<div>Project Number</div> <div>671-237</div> <div>Building Number</div> <div>1</div> <div>Drawing Number</div> <div>ES3.1</div> <div>Dwg. 3 of 11</div>		<div>Office of Facilities Management</div> <div>Department of Veterans Affairs</div>	
--	--	---	--	--	--	--	---	--	--	--	---	--	---	--	--	--