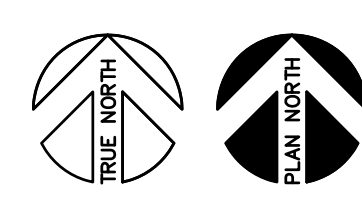
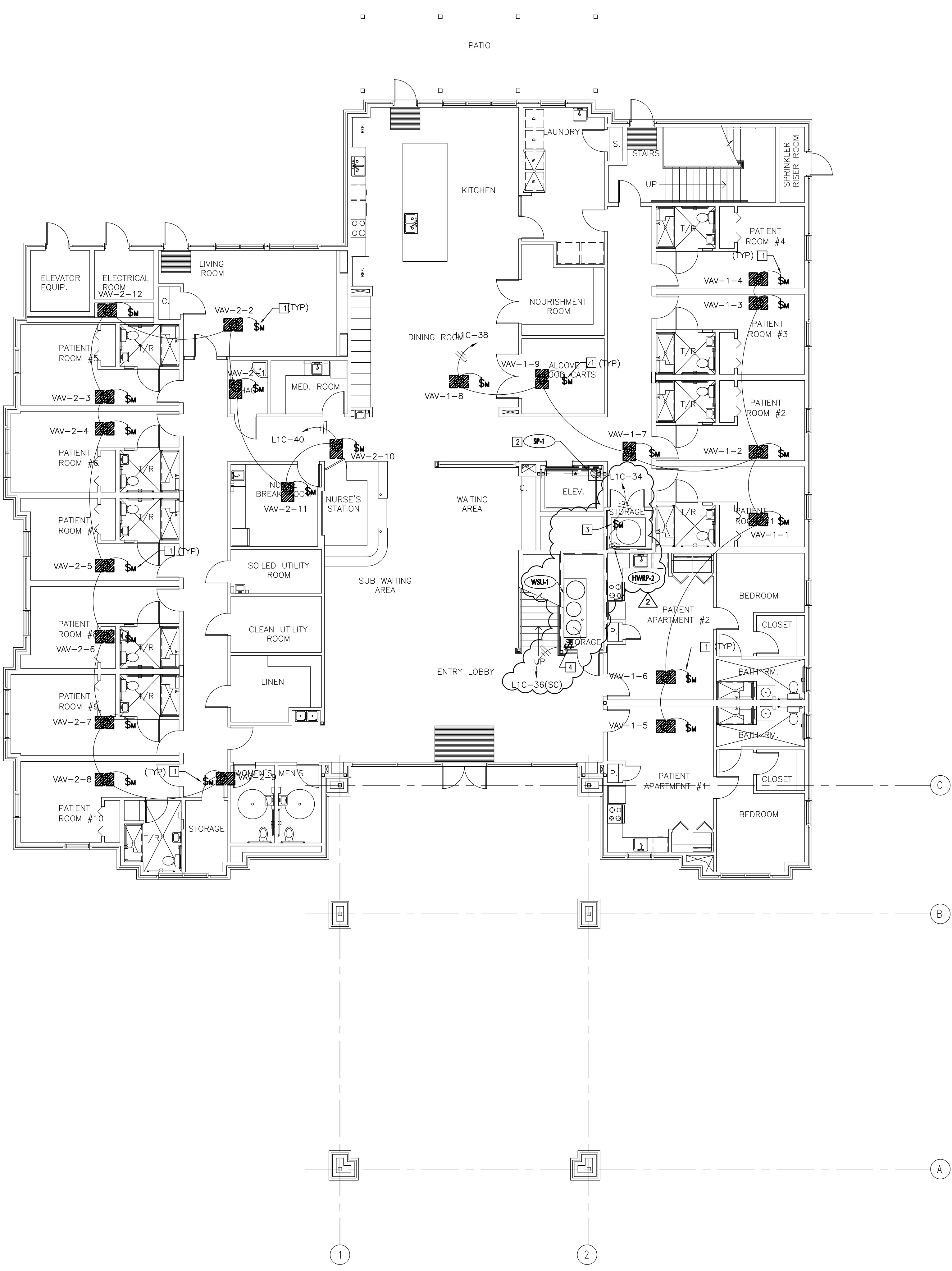
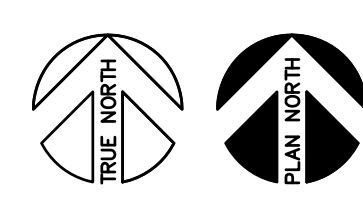
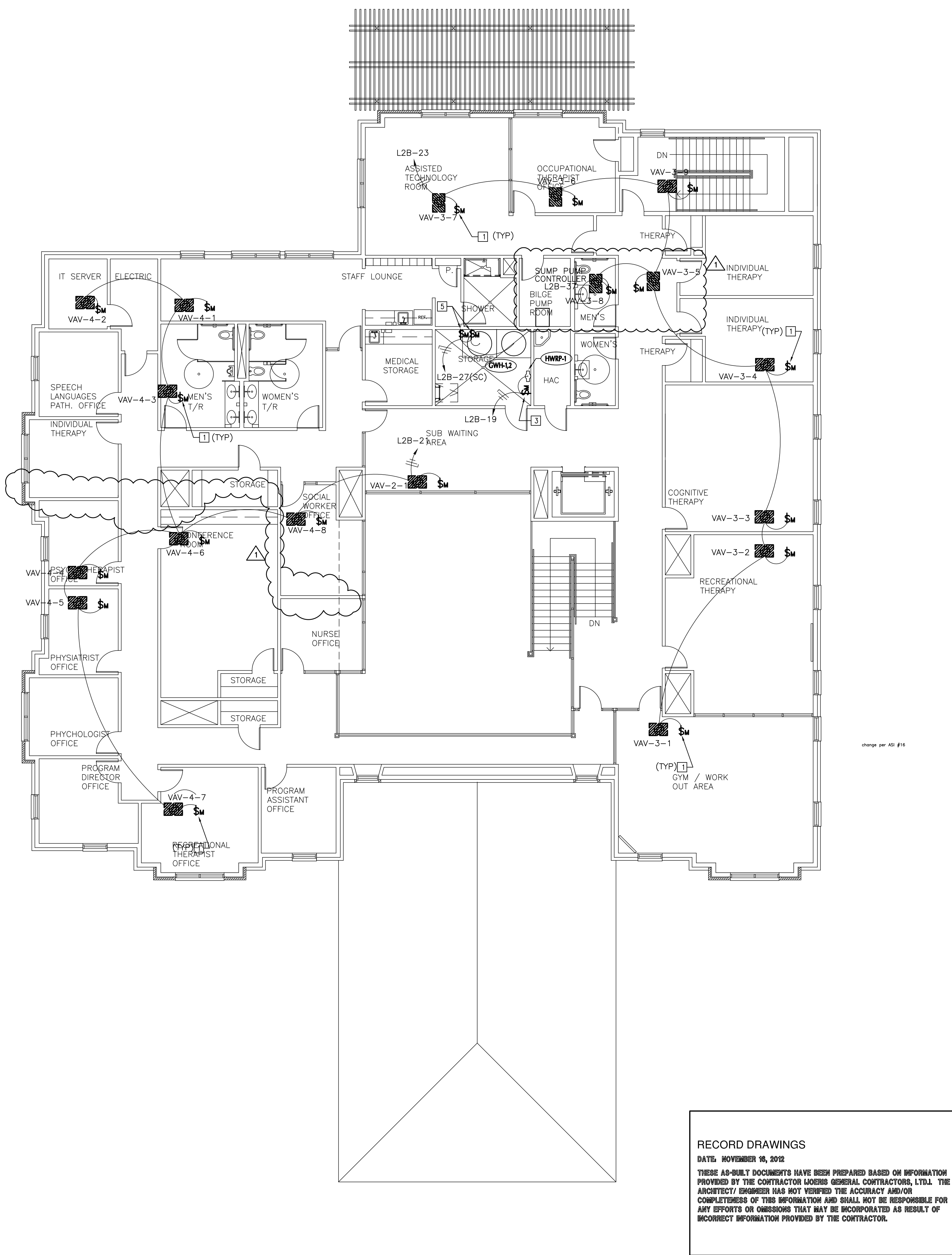


three inches = one foot
one and one half inches = one foot
one inch = one foot
three quarters inch = one foot
one half inch = one foot
three eighths inch = one foot
one quarter inch = one foot
one eighth inch = one foot



MECHANICAL EQUIPMENT
POWER PLAN - FIRST FLOOR
SCALE: 1/8" = 1'-0"



MECHANICAL EQUIPMENT
POWER PLAN - SECOND FLOOR
SCALE: 1/8" = 1'-0"

GENERAL NOTES

1. ALL WORK SHALL BE PERFORMED IN ACCORDANCE WITH THE 2006 INTERNATIONAL CODES AND THE REQUIREMENTS STATED IN THE APPLICABLE SECTIONS OF THE CURRENT NATIONAL FIRE CODES (NFPA STANDARDS). AMENDMENTS TO THESE CODES AS SET FORTH BY THE AUTHORITY HAVING JURISDICTION SHALL SUPERSEDE THE INTERNATIONAL CODES AND NFPA STANDARDS AS ISSUED.
2. COOPERATE FULLY WITH SEPARATE CONTRACTORS SO WORK ON THOSE CONTRACTS MAY BE CARRIED OUT SMOOTHLY WITHOUT INTERFERING WITH OR DELAYING WORK UNDER THIS CONTRACT. COORDINATE THE WORK OF THIS CONTRACT WITH WORK PERFORMED UNDER SEPARATE CONTRACTS.
3. THE DRAWINGS ARE DIAGRAMMATIC ONLY AND SHALL NOT BE SCALED. THE INSTALLER IS RESPONSIBLE FOR COORDINATING WITH OTHER TRADES. THE INSTALLER SHALL NOT INSTALL OR FABRICATE ANY WORK SHOWN UNTIL ALL SUCH WORK IS FULLY COORDINATED.
4. SUPERVISE CONSTRUCTION OPERATIONS TO ASSURE THAT ALL WORK IS INSTALLED IN ACCORDANCE WITH THE CONSTRUCTION DOCUMENTS.
5. MECHANICAL EQUIPMENT SIZES ARE AS DESIGNED. BREAKERS, CONDUIT, STARTERS, CONDUCTORS, ETC., SHALL BE ADJUSTED TO THE EQUIPMENT SUBMITTED AND APPROVED FOR INSTALLATION ON THIS PROJECT.
6. REMOTE MOUNTED MOTORS SHALL BE PROVIDED WITH RECEPTACLES AND PLUGS OR DISCONNECT SWITCHES TO BE COMPATIBLE WITH THE CONSTRUCTION TYPE AND THE REQUIREMENTS OF THE CURRENT NEC.
7. KILOWATT (KW) RATINGS FOR EQUIPMENT MOTOR LOADS ARE AS DESIGNED WITH 90% POWER FACTOR RATING ASSUMED. THE CONTRACTOR SHALL BE RESPONSIBLE FOR INCREASING THE SIZE, AS REQUIRED, OF ALL FEEDERS AND PROTECTIVE DEVICES SERVING ANY ITEMS OF EQUIPMENT SUPPLIED WITH POWER FACTOR RATINGS LESS THAN 90% EFFICIENCY.
8. BRANCH CIRCUITS EXTENDING BEYOND 100' IN LENGTH FROM THE PANELBOARD TO THE FINAL TERMINATING POINT SHALL BE AT MINIMUM #10 AWG COPPER CONDUCTORS.

KEYED NOTES

- 1 FURNISH AND INSTALL A FRACTIONAL HORSEPOWER MANUAL STARTER, SUPPORTED BY THE STRUCTURAL MEMBERS ABOVE THE LAY-IN CEILING, TO SERVE THE VAV - BOXES. FURNISH AND INSTALL THE ELECTRICAL CONNECTION FROM THE STARTER TO THE ELECTRICAL TERMINALS OF THE VAV - BOX; 2#12, #12 GND, 3/4" C. COORDINATE THE EXACT LOCATION FINAL POWER CONNECTION WITH THE MECHANICAL INSTALLER.
- 2 THE SUMP PUMP (SP-1) SHALL BE SERVED FROM THE SIMPLEX RECEPTACLE CONNECTED TO BRANCH CIRCUIT L1C-34. REFERENCE DETAIL 1 ON SHEET ES4.1 FOR THE LOCATION OF THE SIMPLEX RECEPTACLE WITHIN THE ELEVATOR PIT.
- 3 FURNISH AND INSTALL A FRACTIONAL HORSEPOWER MANUAL STARTER TO SERVE THE HOT WATER RECIRCULATION PUMP (HWRP). FURNISH AND INSTALL THE ELECTRICAL CONNECTION FROM THE STARTER TO THE ELECTRICAL TERMINALS OF THE HWRP; 2#12, #12 GND, 3/4" C. COORDINATE THE EXACT LOCATION AND FINAL POWER CONNECTION WITH THE PLUMBING INSTALLER PRIOR TO ROUGH-IN.
- 4 FURNISH AND INSTALL A FRACTIONAL HORSEPOWER MANUAL STARTER TO SERVE THE WATER SOFTENER (WSU). FURNISH AND INSTALL THE ELECTRICAL CONNECTION FROM THE STARTER TO THE ELECTRICAL TERMINALS OF THE WSU; 2#12, #12 GND, 3/4" C. COORDINATE THE EXACT LOCATION AND FINAL POWER CONNECTION WITH THE PLUMBING INSTALLER PRIOR TO ROUGH-IN.
- 5 FURNISH AND INSTALL A FRACTIONAL HORSEPOWER MANUAL STARTER TO SERVE THE GAS HOT WATER HEATER (GWH). FURNISH AND INSTALL THE ELECTRICAL CONNECTION FROM THE STARTER TO THE ELECTRICAL TERMINALS OF THE GWH; 2#12, #12 GND, 3/4" C. COORDINATE THE EXACT LOCATION AND FINAL POWER CONNECTION WITH THE PLUMBING INSTALLER PRIOR TO ROUGH-IN.

RECORD DRAWINGS
DATE: NOVEMBER 16, 2012
THESE AS-BUILT DOCUMENTS HAVE BEEN PREPARED BASED ON INFORMATION PROVIDED BY THE CONTRACTOR LARSEN GENERAL CONTRACTORS, LTD. THE ARCHITECT/ENGINEER HAS NOT VERIFIED THE ACCURACY AND/OR COMPLETENESS OF THIS INFORMATION AND SHALL NOT BE RESPONSIBLE FOR ANY ERRORS OR OMISSIONS THAT MAY BE INCORPORATED AS RESULT OF INCORRECT INFORMATION PROVIDED BY THE CONTRACTOR.

CONTRACTOR TO COORDINATE THE INSTALLATION OF ELECTRICAL EQUIPMENT CONDUIT ABOVE CEILING WITH OTHER DISCIPLINES.

<div>AS1 #104/04/11</div> <div>AS2 #104/04/11</div>		CONSULTANTS:		Approved: Assistant Director			Approved: Chief of Staff			Approved: Chief, Engineering			ARCHITECT:		Drawing Title		Project Title		Project Number		Office of Facilities Management	
		TEXAS REGISTERED ENGINEERING FIRM F-10487 700 N. ST. MARY'S SUITE 122B SAN ANTONIO, TX 78205 WWW.RDMENGINEERING.NET PHONE: 210.299.4522 FAX: 210.299.4525		Approved: Service Chief			Approved: Service Chief			Approved: Service Chief			WEST EAST DESIGN GROUP		ELECTRICAL FIRST AND SECOND MECHANICAL EQUIPMENT POWER FLOOR PLAN		POLYTRAUMA TRANSITIONAL HOUSING		671-237			
Revisions				Approved: Chief, Biomed			Approved: Chief, EMS			Approved: Chief, Infection Control			1617 E. COMMERCE ST., SUITE 7102, SAN ANTONIO, TEXAS 78205 USA		Approved Project Director		Location		Building Number			
				Approved: Chief, IT			Approved: Chief, M & O			Approved: Chief, Police			210.530.0755 FAX 210.530.9427				Audie L. Murphy Veterans Hospital San Antonio, Texas		1			
				Approved: Chief, Safety			Approved: Chief			Approved: Chief			These documents can not be copied or reproduced without written consent from WestEast Design Group				Date		Checked		Drawing Number	
																	28 JULY 2010				ES4.3	
																					Dwg. 6 of 11	
																					Department of Veterans Affairs	