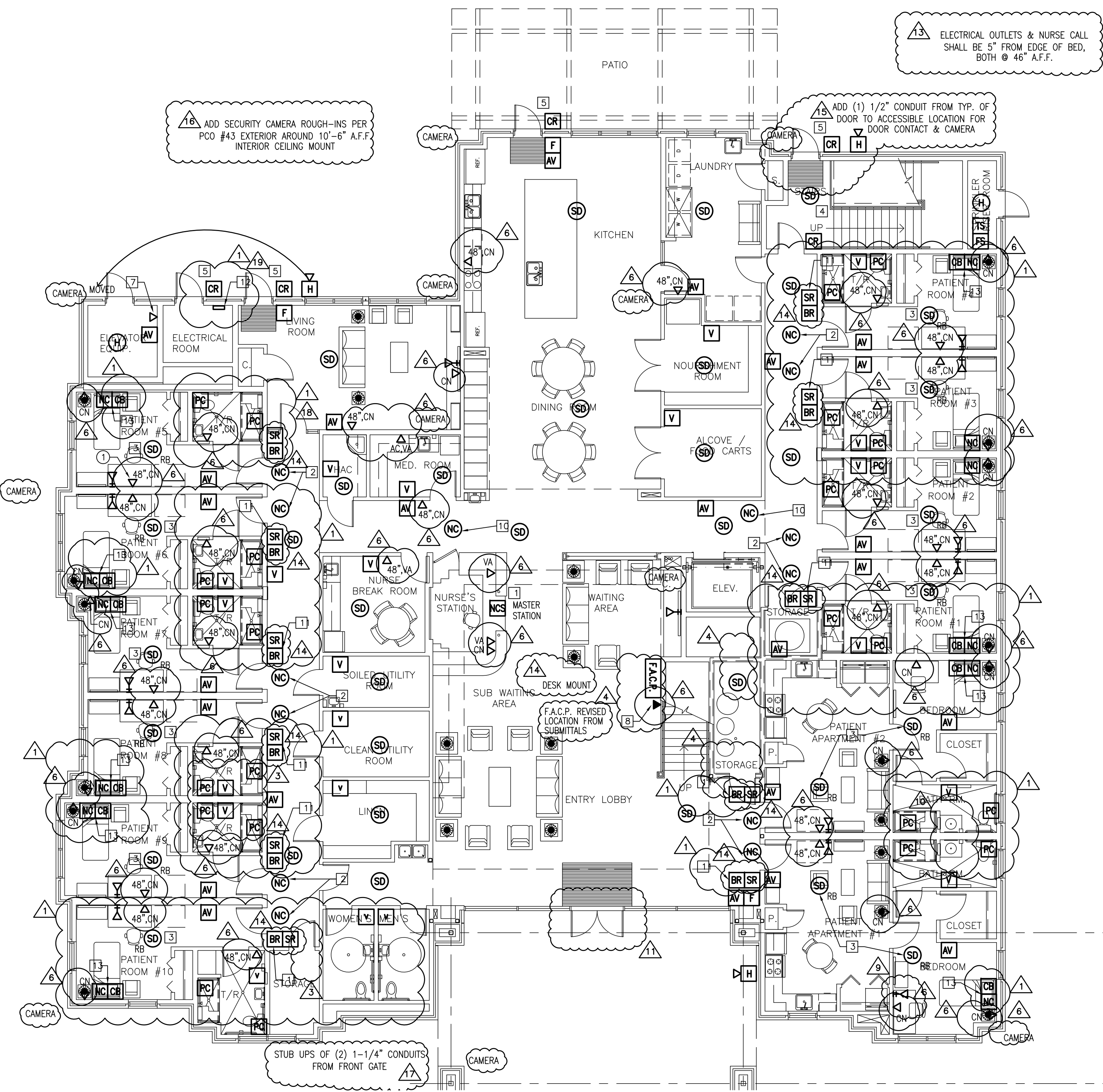
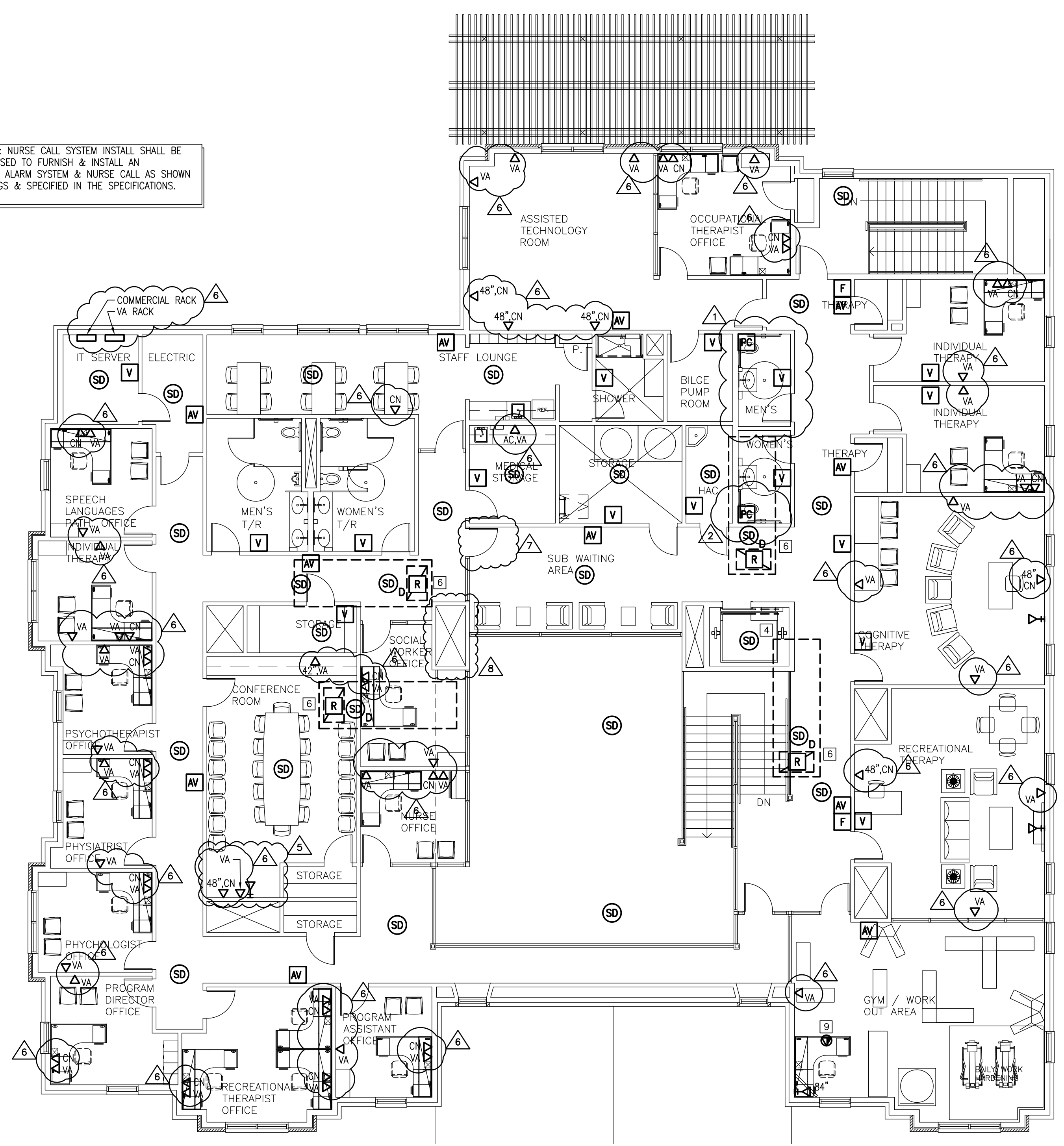


three inches = one foot
one and one half inches = one foot
one inch = one foot
three quarters inch = one foot
one half inch = one foot
one quarter inch = one foot
one eighth inch = one foot
one sixteenth inch = one foot



ELECTRICAL SPECIAL SYSTEMS FLOOR PLAN - FIRST FLOOR
SCALE: 1/8" = 1'-0"

THE FIRE ALARM & NURSE CALL SYSTEM INSTALL SHALL BE CERTIFIED & LICENSED TO FURNISH & INSTALL AN ADDRESSABLE FIRE ALARM SYSTEM & NURSE CALL AS SHOWN ON THESE DRAWINGS & SPECIFIED IN THE SPECIFICATIONS.



ELECTRICAL SPECIAL SYSTEMS FLOOR PLAN - SECOND FLOOR
SCALE: 1/8" = 1'-0"

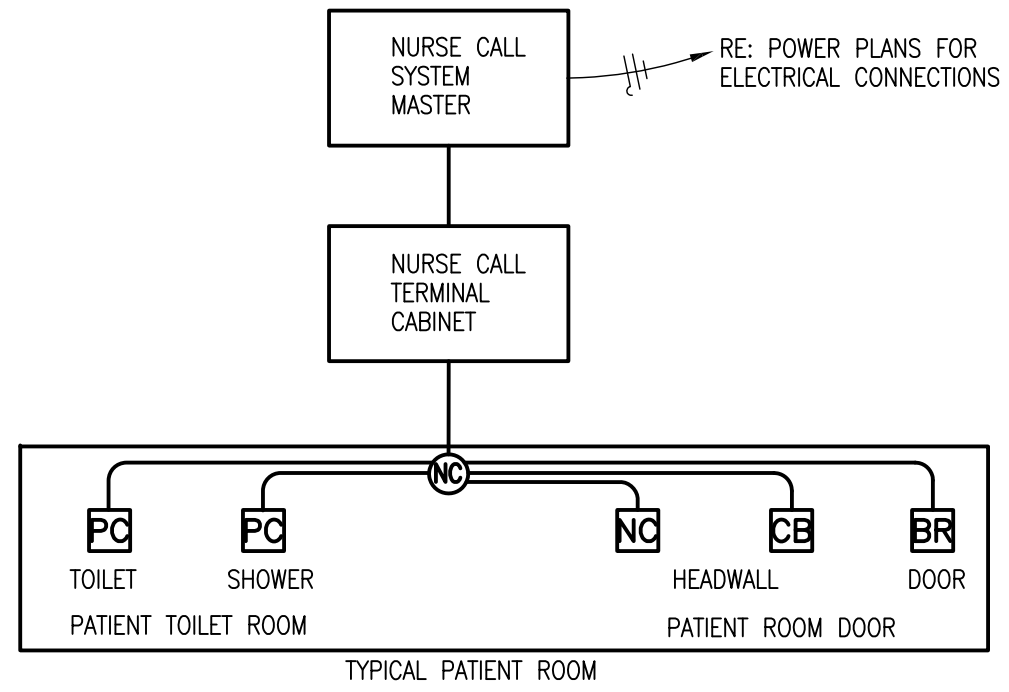
GENERAL NOTES

1. ALL WORK SHALL BE PERFORMED IN ACCORDANCE WITH THE 2006 INTERNATIONAL CODES AND THE REQUIREMENTS STATED IN THE APPLICABLE SECTIONS OF THE CURRENT NATIONAL FIRE CODES (NFPA STANDARDS). AMENDMENTS TO THESE CODES AS SET FORTH BY THE AUTHORITY HAVING JURISDICTION SHALL SUPERSEDE THE INTERNATIONAL CODES AND NFPA STANDARDS AS ISSUED.
2. COOPERATE FULLY WITH SEPARATE CONTRACTORS SO WORK ON THOSE CONTRACTS MAY BE CARRIED OUT SMOOTHLY, WITHOUT INTERFERING WITH OR DELAYING WORK UNDER THIS CONTRACT. COORDINATE THE WORK OF THIS CONTRACT WITH WORK PERFORMED UNDER SEPARATE CONTRACTS.
3. THE DRAWINGS ARE DIAGRAMMATIC ONLY AND SHALL NOT BE SCALED. THE INSTALLER IS RESPONSIBLE FOR COORDINATING WITH OTHER TRADES. THE INSTALLER SHALL NOT INSTALL OR FABRICATE ANY WORK SHOWN UNTIL ALL SUCH WORK IS FULLY COORDINATED.
4. SUPERVISE CONSTRUCTION OPERATIONS TO ASSURE THAT ALL WORK IS INSTALLED IN ACCORDANCE WITH THE CONSTRUCTION DOCUMENTS.

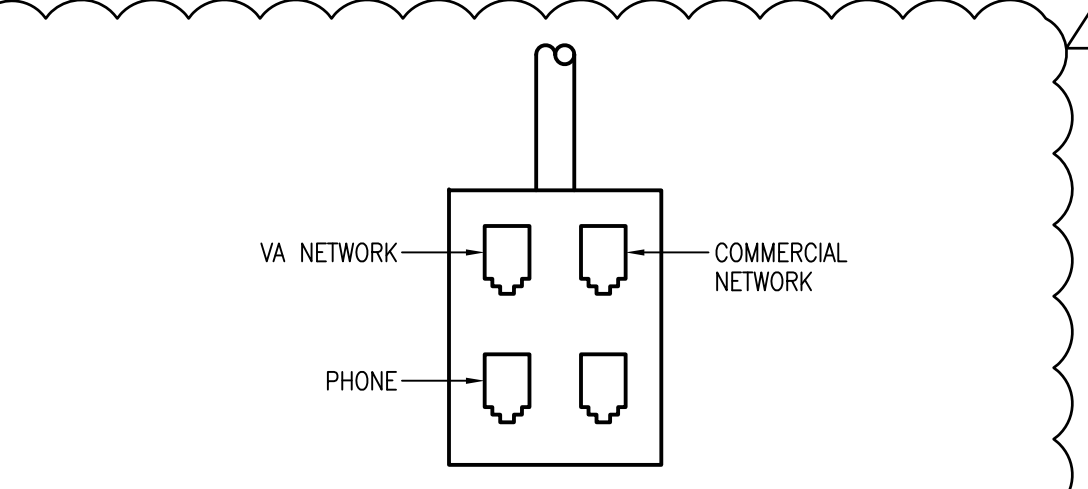
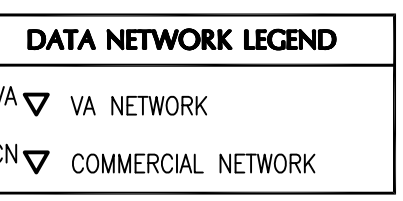
KEYED NOTES

- 1 FURNISH AND INSTALL THE NURSE CALL MASTER STATION. COORDINATE THE EXACT LOCATION OF THE NURSE STATION WITH THE MILLWORK. FURNISH AND INSTALL A SYSTEM OF 3/4" RACEWAYS STUBBED OUT TO AN ACCESSIBLE LOCATION ABOVE THE LAY-IN CEILING TO HOUSE THE NECESSARY CABLES FOR THE NURSE CALL SYSTEM.
- 2 FURNISH AND INSTALL A NURSE CALL CORRIDOR LIGHT WITH A JUNCTION BOX MOUNTED FLUSH WITH THE CEILING AND CENTERED WITH THE PATIENT ROOM DOOR. ALL NURSE CALL CORRIDOR LIGHTS SHALL BE INSTALLED SUCH THAT THE JUNCTION BOXES ARE IN LINE DOWN THE CORRIDOR.
- 3 THE NURSE CALL INSTALLER SHALL INTERFACE THE SMOKE DETECTOR VIA THE RELAY BASE (RB), TO THE NURSE CALL SYSTEM.
- 4 LOCATE THE SMOKE DETECTOR AT THE TOP OF THE ELEVATOR SHAFT.
- 5 FURNISH AND INSTALL A 4" SQUARE JUNCTION BOX WITH A 3/4" CONDUIT AND PULL STRING STUBBED OUT TO AN ACCESSIBLE LOCATION ABOVE THE LAY-IN CEILING TO HOUSE THE SECURITY CARD READER AND CABLE.
- 6 FURNISH AND INSTALL THE A FIRE ALARM RELAY AND THE CONNECTION TO THE DUCT TYPE SMOKE DETECTOR. SMOKE DETECTOR FURNISH AND INSTALLED BY THE MECHANICAL INSTALLER.
- 7 FURNISH AND INSTALL A TELEPHONE OUTLET TO SERVE THE "EMERGENCY CALL" FEATURE OF THE ELEVATOR.
- 8 FURNISH AND INSTALL A TELEPHONE OUTLET TO SERVE THE SECURITY GUARD.
- 9 FURNISH AND INSTALL A PORE-THRU FLOOR BOX TO HOUSE THE POWER, TEL/DATA AND CATV OUTLETS (WIREDMOLD # AV3 OR APPROVED EQUIVALENT) WITH A FLUSH MOUNT COVER RATED FOR PROTECTION FROM WATER, DIRT AND DEBRIS.
- 10 FURNISH AND INSTALL A ZONE CORRIDOR NURSE CALL DOME LIGHT. THE J-BOX FOR THE NURSE CALL LIGHT SHALL BE CENTERED AND MOUNTED FLUSH WITH THE CEILING TILE AT THE INTERSECTION OF THE CORRIDORS.
- 11 THE STAFF REGISTRATION STATION AND THE BED READY STATION SHALL BE MOUNTED ADJACENT TO THE LIGHTING CONTROL SWITCHES.
- 12 FURNISH AND INSTALL A NEW AMPLIFIER/SPLITTER WITH THE CAPACITY TO SERVE THE TV'S IN THE 2A/2B WARD. MOUNT THE AMPLIFIER TO THE PLYWOOD BACKBOARD AT 60" AFF. COORDINATE THE EXACT LOCATION WITH THE BIO MED ENGINEER TO ROUGH-IN. FURNISH AND INSTALL A COAXIAL CATV CABLE FROM EACH OUTLET TO THE AMPLIFIER AND TERMINATE. LABEL EACH CABLE WITH THE ROOM NUMBER IT SERVES. FURNISH AND INSTALL (2) 4" CONDUIT SLEEVES FROM THE INTERSTITIAL SPACE ABOVE DOWN THRU THE CEILING ABOVE THE CABLE AMPLIFIER TO FACILITATE THE ROUTING OF THE CATV CABLES. FIRE CAULK ALL PENETRATIONS THROUGH FIRE RATED SURFACES.
- 13 FURNISH AND INSTALL THE NURSE CALL DEVICES IN THE HEADWALL WITH A J-BOX (COOPER MODEL TP562 OR APPROVED EQUIVALENT) AND PILASTER RING WITH A 1-1/4" CONDUIT ROUTED TO AN ACCESSIBLE LOCATION ABOVE THE CEILING IN THE CORRIDOR TO HOUSE THE LOW VOLTAGE CONDUCTORS (NURSE CALL, CODE BLUE, TELE/DATA AND NC-4) SERVING THE HEADWALL UNIT. COORDINATE THE EXACT LOCATION OF THE J-BOX WITH HEADWALL UNIT IN THE BEDROOMS PRIOR TO ROUGH-IN.

3 PARTIAL NURSE CALL SYSTEM RISER DIAGRAM
SCALE: NO SCALE



*PARTIAL RISER DIAGRAM SHOWS TYPICAL DEVICES TO BE INSTALLED IN A TYPICAL BEDROOM. INSTALLATION TO BE DONE BY CERTIFIED LICENSED INSTALLER. SYSTEM IS BASED ON RAULAND RESPONDER 4000 SYSTEM COMPONENTS, OR APPROVED EQUAL.



FACEPLATE TELE/DATA OUTLET DETAIL
NOT TO SCALE

RECORD DRAWINGS

DATE: NOVEMBER 16, 2012
THESE AS-BUILT DOCUMENTS HAVE BEEN PREPARED BASED ON INFORMATION PROVIDED BY THE CONTRACTOR LABORING GENERAL CONTRACTORS, LTD. THE ARCHITECT/ENGINEER HAS NOT VERIFIED THE ACCURACY AND/OR COMPLETENESS OF THIS INFORMATION AND SHALL NOT BE RESPONSIBLE FOR ANY ERRORS OR OMISSIONS THAT MAY BE INCORPORATED AS A RESULT OF INCORRECT INFORMATION PROVIDED BY THE CONTRACTOR.

CONTRACTOR TO COORDINATE THE INSTALLATION OF ELECTRICAL EQUIPMENT CONDUIT ABOVE CEILING WITH OTHER DISCIPLINES.

AMENDMENT #2 05/21/10 09/13/10 04/04/11 04/04/11 04/04/11 03/12/12 11/29/11 07/14/11 09/19/11		CONSULTANTS: PCO #43 RFI #125.1 & PCO 049R1 01/27/12 RFI #101 RFI #101.3 RFI #116 PCO #043 RFI #116		Approved: Assistant Director Approved: Chief of Staff Approved: Chief, Engineering Approved: Service Chief Approved: Chief, EMS Approved: Chief, Infection Control Approved: Chief, IT Approved: Chief, M & O Approved: Chief, Police Approved: Chief, Safety		ARCHITECT: WEST EAST DESIGN GROUP 1617 E. COMMERCE ST., SUITE 7102, SAN ANTONIO, TEXAS 78205 USA 210.530.0755 FAX 210.530.9427 These documents can not be copied or reproduced without written consent from WestEast Design Group		Drawing Title ELECTRICAL SPECIAL SYSTEMS FLOOR PLANS Approved: Project Director		Project Title POLYTRAUMA TRANSITIONAL HOUSING Location Audie L. Murphy Veterans Hospital San Antonio, Texas Date 28 JULY 2010 Checked Drawn		Project Number 671-237 Building Number 1 Drawing Number ES5.1 Dwg. 7 of 11		Office of Facilities Management Department of Veterans Affairs	
---	--	---	--	--	--	---	--	---	--	---	--	---	--	--	--