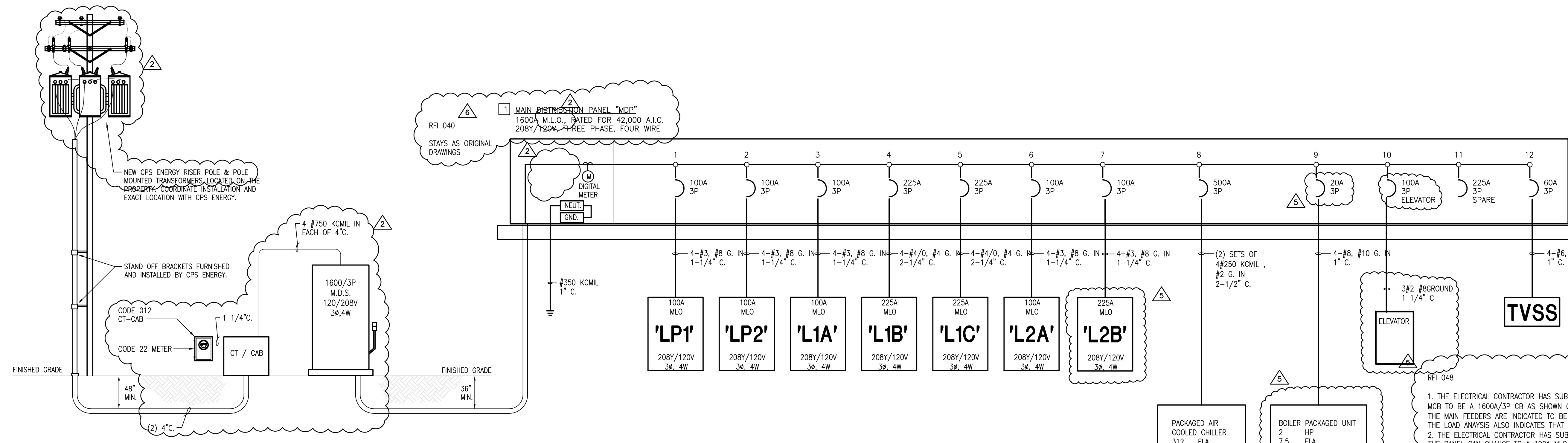
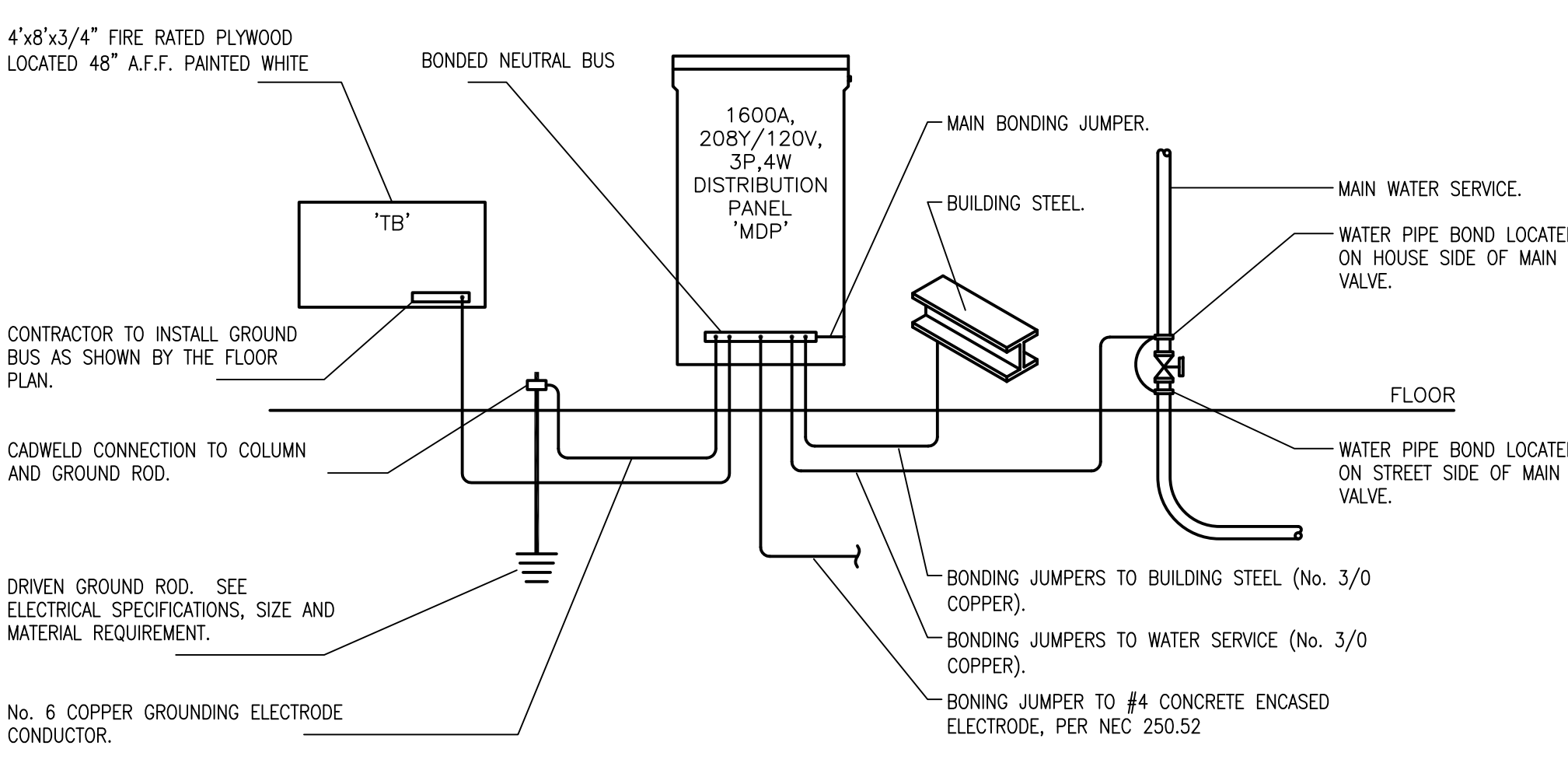


three inches = one foot
one and one half inches = one foot
one inch = one foot
three quarters inch = one foot
one half inch = one foot
three eighths inch = one foot
one quarter inch = one foot
one eighth inch = one foot



1 ELECTRICAL ONE-LINE RISER DIAGRAM
SCALE: NO SCALE



2 ELECTRICAL SYSTEM GROUNDING DETAIL
SCALE: NO SCALE

ELECTRICAL LOAD ANALYSIS							
PROJECT:	VA POLYTRAMA						
ADDRESS:	SAN ANTONIO, TEXAS						
CITY/STATE:							
VOLTAGE:	208						
VOLTAGE TO GND:	120						
PHASE:	3						
WIRE:	4						
TYPE OF LOAD DESCRIPTION	TYPE LOAD REF. NO.	CONN LOAD (KVA)		NEC DEMAND FACTOR	DEMAND LOAD (KVA)	DEMAND LOAD (AMPS)	KEYED NOTES
1. RECEPTACLES	1	107.3	x	SEE NOTE	58.7	162.8	1
2. LIGHTING (VA/Sq.FT)	2	56.8	x	125%	71.0	197.1	2
2a. LIGHTING (connect)	2	22.8	x	125%			2
3. AIR CONDITIONING	3	180.9	x	100%	180.9	502.1	3
4. ELECTRIC HEATING	4	0.0	x	100%	0.0	0.0	4
5. MOTORS	5	2.8	x	100%	2.8	7.7	5
6. WATER HEATING	6	0.0	x	100%	0.0	0.0	6
7. ELEVATORS	7	28.2	x	100%	28.2	78.1	7
8. KITCHEN EQUIPMENT	8	48.0	x	80%	38.4	106.6	8
9. MISCELLANEOUS	9	21.1	x	100%	21.1	58.5	9
10. EXTERIOR LIGHTING	10	12.4	x	125%	15.5	42.9	10
TOTALS =		480.2			416.5	1155.7	
LOAD ANALYSIS NOTES	NEC REFERENCE			DEMAND LOAD SUMMARY (KVA) (AMPS)			
NOTE 1	PER NEC TABLE 220.44			DEMAND LOAD 416.5 1155.7			
NOTE 2	PER NEC TABLE 220.12			LARGEST MTR 7.0 19.5			
NOTE 3	PER NEC 220.60 & ARTICLE 440			ADD -LTG VA/SF			
NOTE 4	PER NEC 220.60			(SEE NOTE 10) 0.0 0.0			
NOTE 5	PER NEC TABLE 430.22(E), 430.24, 430.26			SUB-TOTAL 423.5 1175.3			
NOTE 6	PER NEC ARTICLE 422						
NOTE 7	PER NEC TABLE 430.22(E), 430.26, & 620.13, 14, 15						
NOTE 8	PER NEC TABLE 220.56			TOTAL LOAD 423.5 1175.3			
NOTE 9	NO NOTES- DEMAND FACTOR AT 100%			THE NEW ELECTRICAL SERVICE ENTRANCE			
NOTE 10	NO NOTES- DEMAND FACTOR AT 100%			WILL BE SIZED AT 1600 AMPS. ALLOWING			
LOAD ANALYSIS COMPUTATIONS PER NEC 2008				FOR A 428 AMP SPARE CAPACITY.			

V. A. POLYTRAUMA CENTER									
TYPE	MFG	CATALOG NUMBER	MOUNTING	NO.	LMPS	WATTS	TYPES	VOLTS	NOTES
A	LITHONIA	2RT5 28T5 MVOLT GEB95S	RECESSED	2	28	F28T5 35K	120		THERAPY ROOMS AND OFFICES / GRID MOUNT
AE	LITHONIA	LPMB35P EL	RECESSED	2	28	F28T5 35K	120		EMERGENCY BALLAST
A1	LITHONIA	2RT5 28T5 MVOLT GEB95S	RECESSED	2	28	F28T5 35K	120		2X4 FLUOR. / HARD CEILING
A1E	LITHONIA	LPMB35P EL14 DGA24	RECESSED	2	28	F28T5 35K	120		2X4 FLUOR. / HARD CEILING W EM
A2	LITHONIA	2RT5 28T5 MVOLT GEB95S	RECESSED	2	24	F24T5H 35K	120		2X2 FLUOR. / HARD CEILING
A2E	LITHONIA	2RT5 14T5 MVOLT GEB95S LPB35 EL14 DGA22	RECESSED	2	14	F14T5 35K	120		2X2 FLUOR. / HARD CEILING W EM
B	LITHONIA	2LB 232 MVOLT GEB10PS	RECESSED	2	28	F28T5 35K	120		1X4 SURFACE MT WRAP / STORAGE
B1	LITHONIA	2LB 232 MVOLT GEB10PS	PENDANT	2	28	F28T5 35K	120		1X4 STEM MT WRAP / STORAGE
C	ELITE	HVBP1 1X32 E MVOLT 6101 CL WH	RECESSED	1	32	F32TRT 35K	120		6" FLUOR. DWNLTS
CE	ELITE	HVBP1 1X32 E MVOLT INTG 1300 6101 CL WH	RECESSED	1	32	F32TRT 35K	120		6" DWNLTS W EMERGENCY BALLAST
C1	ELITE	HVBP1 1X32 E MVOLT 6101 CL WH	RECESSED	1	32	F42TRT 35K	120		8" FLUOR. DWNLTS / CORRIDORS
C1E	ELITE	HVBP1 1X32 E MVOLT 6101 CL WH-EL	RECESSED	1	32	F42TRT 35K	120		8" FLUOR. DWNLTS WITH EMERGENCY BALLAST
C2	ELITE	HVBP1 1X42 E MVOLT / 6101 CL WH	RECESSED	1	42	F42TRT 35K	120		8" FLUOR. DWNLTS / LOBBY
C2E	ELITE	HVBP1 1X42 E MVOLT / 6101 CL WH	RECESSED	1	42	F42TRT 35K	120		8" FLUOR. DWNLTS WITH EMERGENCY BALLAST
C3	ELITE	HHBPL 1X42 E MVOLT 8501 CL WH	RECESSED	1	42	F42TRT 35K	120		8" WALL WASH / LOBBY
D1	DELRAY	6321-BLC-39" (BLACK BAND)	SUSPENDED 3 AND 1	17 & 39		F17T8 35K & 39W PAR30	120		33" CYLINDER / LOBBY
D2	DELRAY	6320-1-BLC-36" (BLACK BAND)	SUSPENDED 3 AND 1	32 & 39		39MH PAR30	120		57" CYLINDER / LOBBY
D3	DELRAY	6322-1-BLC-46" (BLACK BAND)	SUSPENDED 3 AND 1	32 & 39		F32T8 35K & 39MH PAR30	120		57" CYLINDER / LOBBY
D4	DELRAY	6320-1-BLC-57" (BLACK BAND)	SUSPENDED 3 AND 1	32 & 39		39MH PAR30	120		57" CYLINDER / LOBBY
D5	DELRAY	6321-1-BLC-45" (BLACK BAND)	SUSPENDED 3 AND 1	17 & 39		39W PAR30	120		33" CYLINDER / LOBBY
E	TERON	NK213-JC-BT	WALL	2	13	13W PL	120		OUTDOOR WALL
F	WE-EF	651-4042	POLE LIGHT	1	150	CMH-150 ED-17	120		OUTDOOR PATHWAY
G	LITHONIA	11581 B2	SURFACE	1	13	F13SPIRAL 35K	120		PATIENT RM CLOSET / LAUNDRY RM
H	FINELITE	512-P 16 3T5 DC 91W (VOLT) AC36" CE (MOUNTING) 88	SUSPENDED	3	28	F28T5 35K	120		LINEAR INDIRECT IN CONFERENCE RM
J	GOTHAM	SQF 1/42TRT 6AR LD WLP	RECESSED	1	42	F42TRT 35K	120		6" FLUOR. SQUARE
JE	GOTHAM	SQF 1/42TRT 6AR LD WLP ELR	RECESSED	1	42	F42TRT 35K	120		6" SQUARE W EMERGENCY BALLAST
K	TERON	JN4232E	WALL	2	32	F32T8 35K	120		6" VANITY FIXTURE
L	PRISMA	WAVE 15 #07602 / FACE PLATE #310111 BLUE	WALL SEMI RECESSED	30	0.81	LED BLUE	120		STAIRS / BLUE LED STEP LIGHT
M	VISTA	1W138 2L5 120/277V 2X4 P EB AM MW	THRU WALL RECESSED	1	5	5W LED AMBER	120		NIGHT THRU WALL LIGHT
N	LITHONIA	22 28 MVOLT GEB10PS WQZ46	SURFACE	2	28	F28T5 35K	120		4" FLUOR STRIP W WIREGUARD / STORAGE
P	TERON	IMP5-F218X-120E-WAL-BT-35K	WALL	2	18W	F18TBX	120		2 LAMP WALL SCONCE
Q	LITHONIA	K40 320M R4 TB SPDA SCWA PER LP1	SURFACE	6	32	F32T8 35K	120		4X4 SURFACE MOUNT / APPT KITCHENS
R	ELITE	HHBPL 2X42 E MVOLT / 8515 CL	RECESSED	2	42	TRT 35K	120		EXTERIOR PORTE A COCHIERE
RE	ELITE	HHBPL 2X42 E MVOLT INTG1300B515 CL WH	RECESSED	2	42	TRT 35K	120		EMERGENCY BALLAST
S	FINELITE	UC - 9W-S / ACCESSORIES	COUNTER	9	1	1W LED	120		LED UNDERCOUNTER LIGHT
T	LITHONIA	IMP20-F18Q-120E-WAL-BT-35K	ABOVE CABINETS	1			120		FLUOR. STRIP / ABOVE CABINETS - KITCHEN
U	TERON	K40 320M R4 TB SPDA SCWA PER LP1	CEILING	4	18	35K	120		MOUNTED ON CEILING
V	LITHONIA	IMP20-F18Q-120E-WAL-BT-35K	POLE	1	320	MHCUEV17	208		AREA LIGHT - PARKING
V POLE	KW	SSS 25 4G DM19 DDB BC	POLE ARM SURFACE	1	150	150 A-21	120		ELEVATOR PIT LIGHT
W	HUBBELL	WXX-151	CEILING OR BACK	1	150	150 A-21	120		EXIT SIGNS NO COVERGLASS
EX	LITHONIA	USC-1-BLC-39" (BLACK BAND)	WALL	1	39	LED	120		EXTERIOR EMERGENCY LIGHT UNIT
EM	LITHONIA	AFN DB EXT	EXTERIOR	2	6W	XENON METAL HALIDE	120		SIGNAGE LIGHT
Y	LSI	DRM 2 HF 250 PSMU F MT BRZ-PS-SMT	STANCHION MOUNT	1	250W		120		

RECORD DRAWINGS
DATE: NOVEMBER 16, 2012
THESE AS-BUILT DOCUMENTS HAVE BEEN PREPARED BASED ON INFORMATION PROVIDED BY THE CONTRACTOR. THE CONTRACTOR SHALL BE RESPONSIBLE FOR THE ACCURACY AND COMPLETENESS OF THIS INFORMATION AND SHALL NOT BE RESPONSIBLE FOR ANY ERRORS OR OMISSIONS THAT MAY BE INCORPORATED AS RESULT OF INCORRECT INFORMATION PROVIDED BY THE CONTRACTOR.

ASI #1
RFI #22
RFI #100
RFI #99
RFI #48
RFI #40
AMENDMENT #12

04/04/11
04/28/11
12/05/11
11/09/11
07/07/11
06/23/11

CONSULTANTS:

TEXAS REGISTERED
ENGINEERING FIRM F-10487
SUITE 1225
SAN ANTONIO, TX 78205
WWW.RDMENGINEERING.NET
PHONE: 210.299.4522
FAX: 210.299.4525

Approved: Assistant Director
Approved: Service Chief
Approved: Chief, Biomed
Approved: Chief, IT
Approved: Chief, Safety

Approved: Chief of Staff
Approved: Service Chief
Approved: Chief, EMS
Approved: Chief, M & O
Approved: Chief

Approved: Chief, Engineering
Approved: Service Chief
Approved: Chief, Infection Control
Approved: Chief, Police
Approved: Chief

ARCHITECT:

WEST EAST DESIGN GROUP
1617 E. COMMERCE ST., SUITE 7102, SAN ANTONIO, TEXAS 78205 USA
210.530.0755 FAX: 210.530.9427

These documents can not be copied or reproduced without written consent from WestEast Design Group

Drawing Title
ELECTRICAL RISER DIAGRAM
AND SCHEDULES

Approved: Project Director

Project Title
POLYTRAUMA
TRANSITIONAL
HOUSING

Location
Audie L. Murphy Memorial Veterans Hospital
San Antonio, Texas

Date
28 JULY 2010

Checked
Drawn

Project Number
671-237
Building Number
1

Drawing Number
ES6.1
Dwg. 8 of 11

Office of
Facilities
Management

Department of
Veterans Affairs