

three inches = one foot  
one and one half inches = one foot  
one inch = one foot  
three quarters inch = one foot  
one half inch = one foot  
three eighths inch = one foot  
one quarter inch = one foot  
one eighth inch = one foot

**BID ALTERNATE**  
AS A BID ALTERNATE THE CONTRACTOR SHALL CONTRACT WITH A LICENSED AND CERTIFIED TELECOMMUNICATIONS SYSTEM INSTALLER TO INSTALL A CODE COMPLIANT AND FULLY FUNCTIONAL TELE DATA AND CATV SYSTEM. THE SYSTEM SHOWN ON THIS PLAN AND DETAILS ARE FOR GENERAL REFERENCE ONLY AND REPRESENT THE MINIMUM REQUIREMENTS. THE SYSTEM SHALL BE INSTALLED BY THE LICENSED CONTRACTOR SHALL ADHERE TO THE FOLLOWING CODES:  
• NFPA-70 NEC 2008 EDITION  
• ANSI/TIA/EIA-568-C.1 COMMERCIAL BUILDING TELECOMMUNICATIONS CABLE STANDARD  
• ANSI/TIA/EIA-569-B COMMERCIAL BUILDING STANDARD FOR TELECOMMUNICATIONS PATHWAYS AND SPACES  
• ANSI/TIA/EIA-606-A ADMINISTRATION STANDARD FOR TELECOMMUNICATIONS INFRASTRUCTURE OF COMMERCIAL BUILDINGS AND STD-607 COMMERCIAL BUILDING GROUNDS AND BONDING REQUIREMENTS FOR TELECOMMUNICATIONS  
• BICSI TELECOMMUNICATIONS DISTRIBUTION METHODS MANUAL

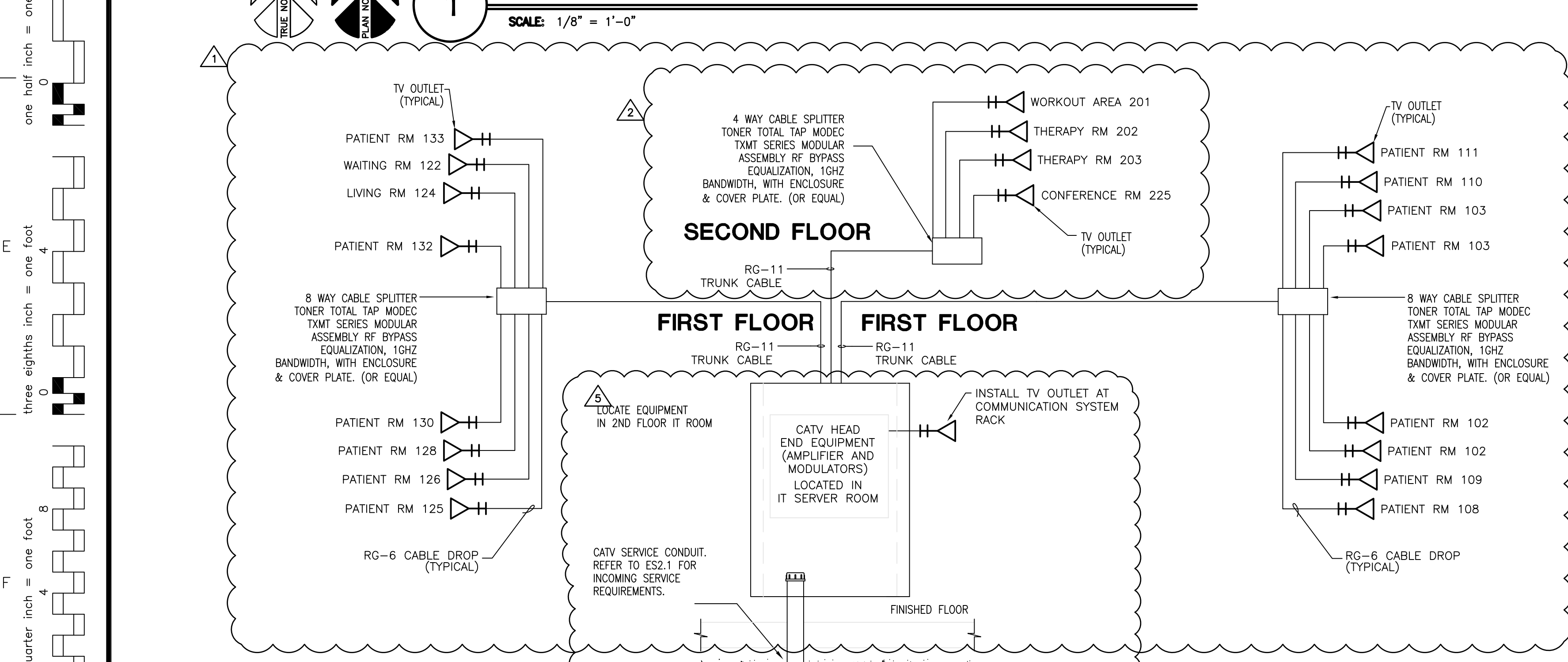
DELETED, AMENDMENT 12

- ### GENERAL NOTES
- ALL WORK SHALL BE PERFORMED IN ACCORDANCE WITH THE 2006 INTERNATIONAL CODES AND THE REQUIREMENTS STATED IN THE APPLICABLE SECTIONS OF THE CURRENT NATIONAL FIRE CODES (NFPA STANDARDS). AMENDMENTS TO THESE CODES AS SET FORTH BY THE AUTHORITY HAVING JURISDICTION SHALL SUPERSEDE THE INTERNATIONAL CODES AND NFPA STANDARDS AS ISSUED.
  - COOPERATE FULLY WITH SEPARATE CONTRACTORS SO WORK ON THOSE CONTRACTS MAY BE CARRIED OUT SMOOTHLY, WITHOUT INTERFERING WITH OR DELAYING WORK UNDER THIS CONTRACT. COORDINATE THE WORK OF THIS CONTRACT WITH WORK PERFORMED UNDER SEPARATE CONTRACTS.
  - THE DRAWINGS ARE DIAGRAMMATIC ONLY AND SHALL NOT BE SCALED. THE INSTALLER IS RESPONSIBLE FOR COORDINATING WITH OTHER TRADES. THE INSTALLER SHALL NOT INSTALL OR FABRICATE ANY WORK SHOWN UNTIL ALL SUCH WORK IS FULLY COORDINATED.
  - SUPERVISE CONSTRUCTION OPERATIONS TO ASSURE THAT ALL WORK IS INSTALLED IN ACCORDANCE WITH THE CONSTRUCTION DOCUMENTS.

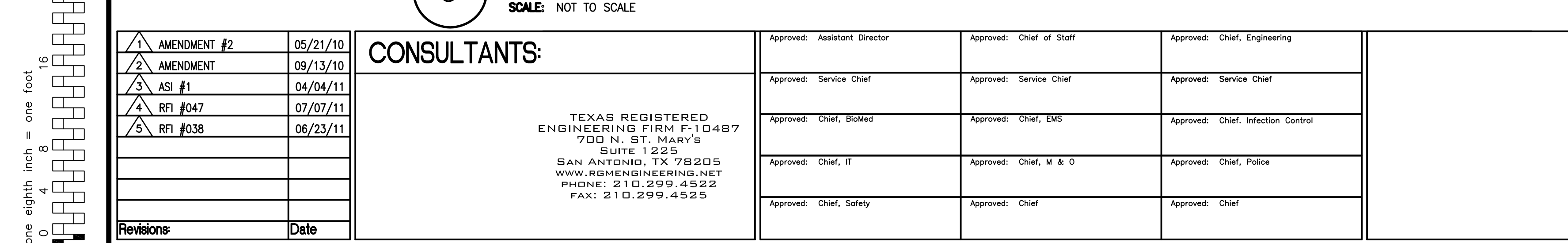
- ### KEYED NOTES
- APPROXIMATE LOCATION OF THE IT RACKS. THE CONTRACTOR SHALL FURNISH AND INSTALL THE IT RACKS SIZED IN ACCORDANCE WITH THE APPLICABLE CODES AND STANDARDS. COORDINATE THE FINAL LOCATION OF THE RACKS WITH THE CABLE TRAY LAY-OUT SO THAT SHARP TURNS IN THE COMMUNICATIONS CABLE RUNS ARE AVOIDED.
  - APPROXIMATE STUB-UP LOCATION OF THE (2) 4" CONDUITS HOUSING THE INCOMING TELECOMMUNICATIONS AND CATV CABLES. ROUTE THE CONDUITS THROUGH THE ELECTRICAL AND UP TO THE SECOND FLOOR IT SERVER ROOM. OFFSET THE CONDUITS IN BETWEEN THE FIRST AND SECOND FLOORS AS REQUIRED TO ENSURE THE CONDUITS STUB-UP INSIDE OF THE IT SERVER ROOM.
  - FURNISH AND INSTALL A POKE-THRU FLOOR BOX TO HOUSE THE POWER, TEL/DATA AND CATV OUTLETS (WIRED OR #4/3 OR APPROVED EQUIVALENT WITH A FLUSH MOUNT COVER RATED FOR PROTECTION FROM WATER, DIRT AND DERBIES)

CONTRACTOR TO COORDINATE THE INSTALLATION OF ELECTRICAL CABLE TRAY & COMMUNICATION CONDUITS WITH OTHER DISCIPLINES

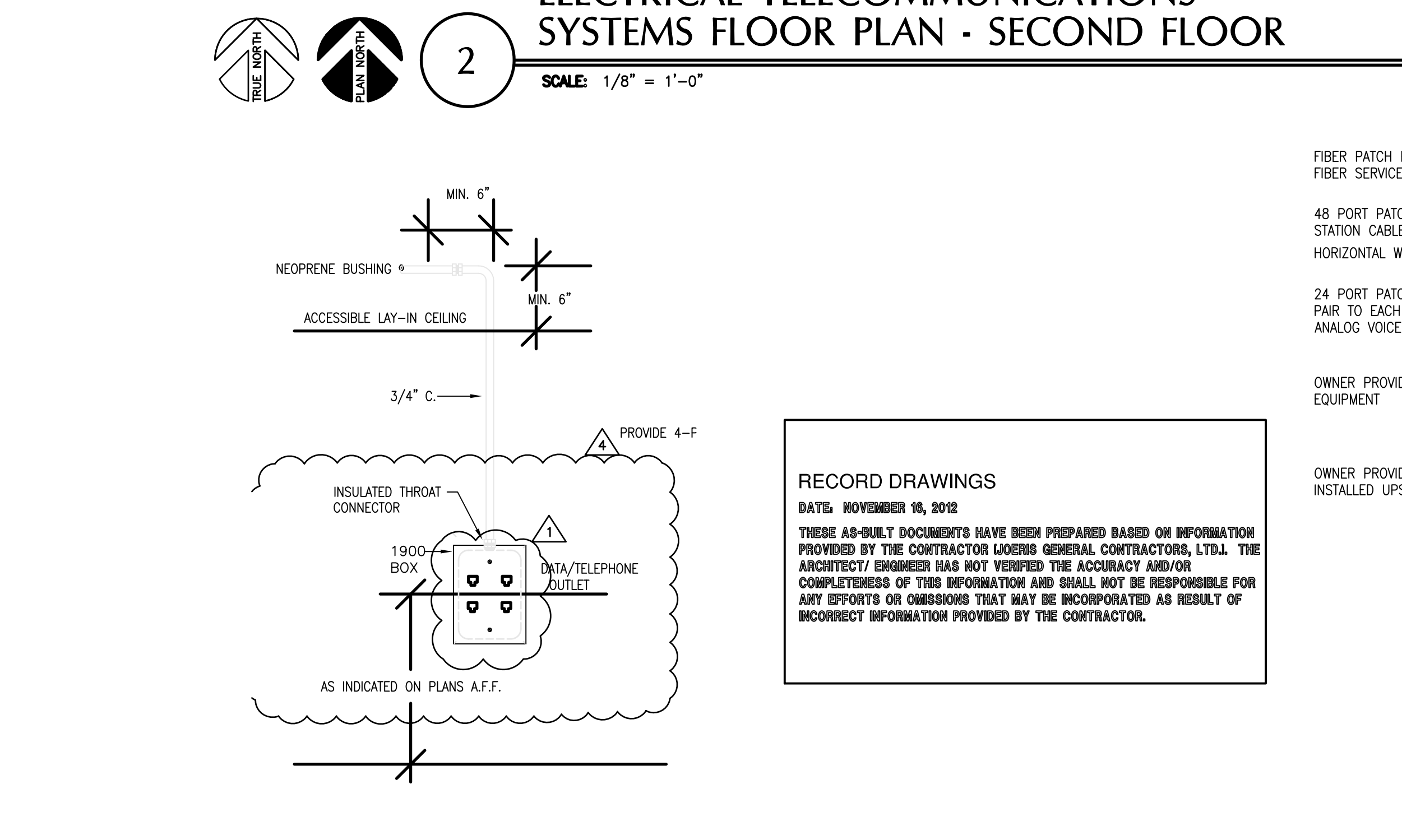
## 1 ELECTRICAL TELECOMMUNICATIONS SYSTEM FLOOR PLAN - FIRST FLOOR



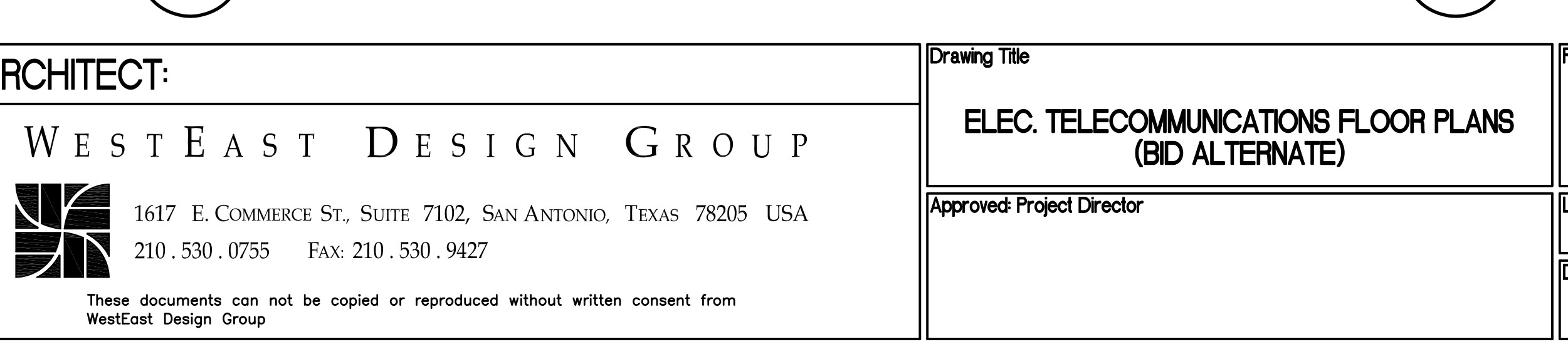
## 3 CABLE T.V. RISER



## 2 ELECTRICAL TELECOMMUNICATIONS SYSTEMS FLOOR PLAN - SECOND FLOOR



## 4 TELE/DATA OUTLET DETAIL



## 5 IT RACK DETAIL

