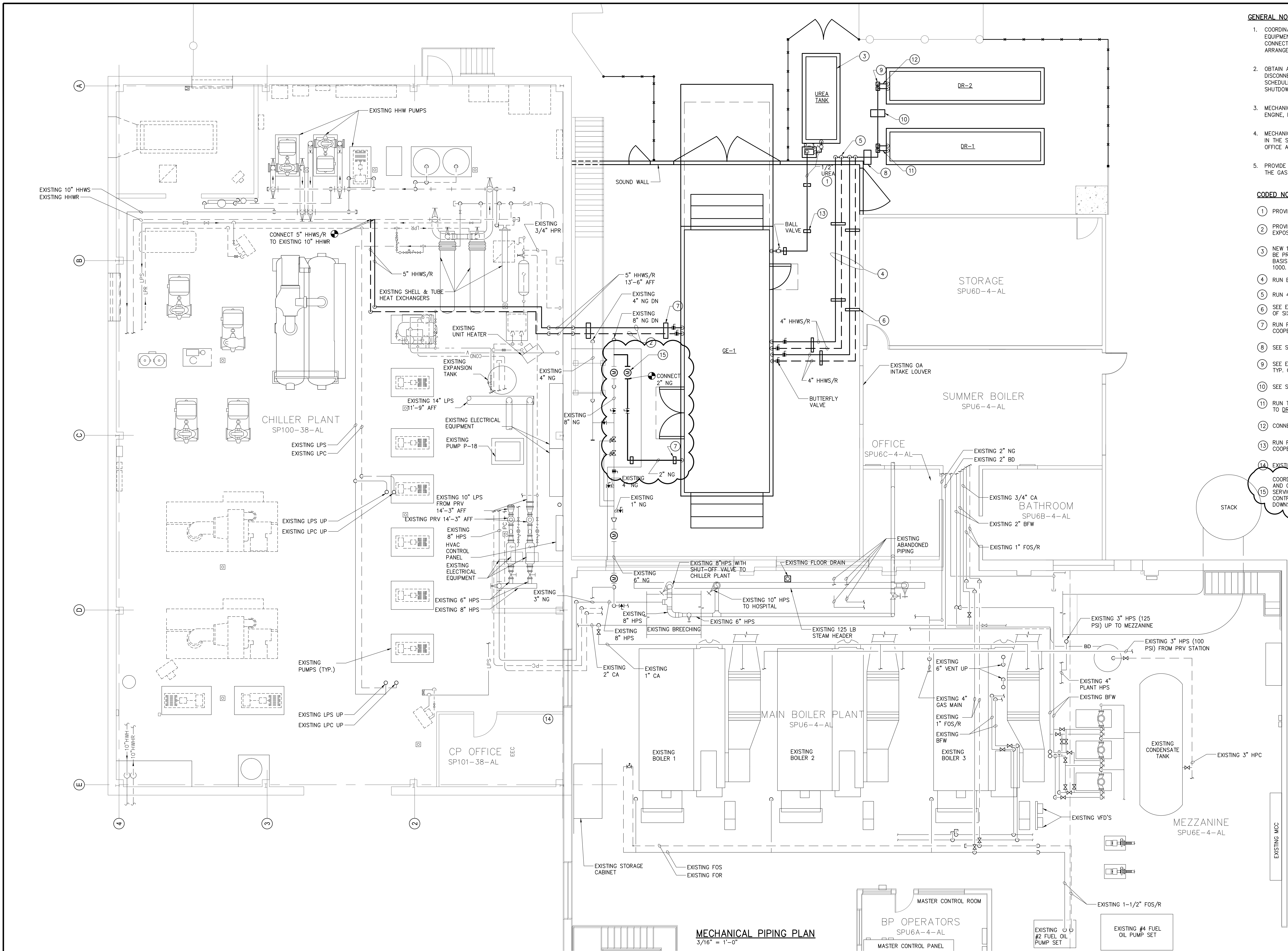
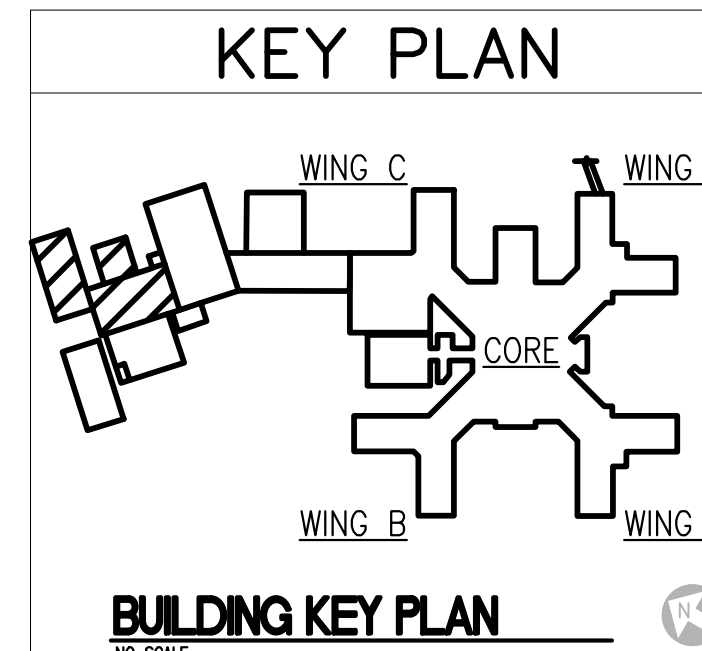


Copyright © RAMTECH-Engineers, P.C.
one eighth inch = one foot
one quarter inch = one foot
one half inch = one foot
three eighths inch = one foot
one inch = one foot
one and one half inches = one foot
two inches = one foot
three inches = one foot
four inches = one foot
five inches = one foot
six inches = one foot
seven inches = one foot
eight inches = one foot
nine inches = one foot
ten inches = one foot
eleven inches = one foot
twelve inches = one foot
thirteen inches = one foot
fourteen inches = one foot
fifteen inches = one foot
sixteen inches = one foot
seventeen inches = one foot
eighteen inches = one foot
nineteen inches = one foot
twenty inches = one foot
twenty one inches = one foot
twenty two inches = one foot
twenty three inches = one foot
twenty four inches = one foot
twenty five inches = one foot
twenty six inches = one foot
twenty seven inches = one foot
twenty eight inches = one foot
twenty nine inches = one foot
thirty inches = one foot
thirty one inches = one foot
thirty two inches = one foot
thirty three inches = one foot
thirty four inches = one foot
thirty five inches = one foot
thirty six inches = one foot
thirty seven inches = one foot
thirty eight inches = one foot
thirty nine inches = one foot
forty inches = one foot
forty one inches = one foot
forty two inches = one foot
forty three inches = one foot
forty four inches = one foot
forty five inches = one foot
forty six inches = one foot
forty seven inches = one foot
forty eight inches = one foot
forty nine inches = one foot
fifty inches = one foot
fifty one inches = one foot
fifty two inches = one foot
fifty three inches = one foot
fifty four inches = one foot
fifty five inches = one foot
fifty six inches = one foot
fifty seven inches = one foot
fifty eight inches = one foot
fifty nine inches = one foot
sixty inches = one foot
sixty one inches = one foot
sixty two inches = one foot
sixty three inches = one foot
sixty four inches = one foot
sixty five inches = one foot
sixty six inches = one foot
sixty seven inches = one foot
sixty eight inches = one foot
sixty nine inches = one foot
seventy inches = one foot
seventy one inches = one foot
seventy two inches = one foot
seventy three inches = one foot
seventy four inches = one foot
seventy five inches = one foot
seventy six inches = one foot
seventy seven inches = one foot
seventy eight inches = one foot
seventy nine inches = one foot
eighty inches = one foot
eighty one inches = one foot
eighty two inches = one foot
eighty three inches = one foot
eighty four inches = one foot
eighty five inches = one foot
eighty six inches = one foot
eighty seven inches = one foot
eighty eight inches = one foot
eighty nine inches = one foot
ninety inches = one foot
ninety one inches = one foot
ninety two inches = one foot
ninety three inches = one foot
ninety four inches = one foot
ninety five inches = one foot
ninety six inches = one foot
ninety seven inches = one foot
ninety eight inches = one foot
ninety nine inches = one foot
one hundred inches = one foot



- GENERAL NOTES**
- COORDINATE PIPING ARRANGEMENT/PENETRATIONS WITH EQUIPMENT MANUFACTURER. EQUIPMENT MANUFACTURER SHALL PROVIDE PREFABRICATED FLANGES FOR PIPING CONNECTIONS. PREFABRICATED FLANGES SHALL BE LOCATED USING THE PIPING ARRANGEMENT SHOWN ON FLOOR PLAN.
 - OBTAIN AUTHORIZATION AND CONFIRMATION FROM THE OWNER PRIOR TO DISCONNECTING OR REMOVING ANY EQUIPMENT OR ITEMS. COORDINATE AND SCHEDULE NECESSARY RELATED SYSTEM SHUTDOWN WITH OWNER. MINIMIZE SHUTDOWN TIME AND LIMIT IMPACT TO BUILDING.
 - MECHANICAL CONTRACTOR IS RESPONSIBLE FOR PIPING TO AND FROM THE GAS ENGINE, RADIATORS AND UREA TANK.
 - MECHANICAL CONTRACTOR CAN USE APPROXIMATELY 50% OF CP OFFICE LOCATED IN THE SOUTHEAST CORNER OF CHILLER PLANT FOR THE GC SUPERINTENDENT OFFICE AND RESTROOMS ARE AVAILABLE IN THE BOILER PLANT.
 - PROVIDE FLANGED FLEXIBLE CONNECTORS AT ALL PIPING CONNECTION POINTS TO THE GAS ENGINE.

- CODED NOTES**
- PROVIDE HEAT TRACING FOR ALL UREA PIPING.
 - PROVIDE HEAT TRACING FOR ALL SECONDARY LOOP PIPING EXPOSED TO THE OUTDOORS.
 - NEW 1000 GALLON POLYETHYLENE UREA TANK WITH STAND TO BE PROVIDED BY GAS ENGINE EQUIPMENT MANUFACTURER. BASIS OF DESIGN: ASSMANN CORP OF AMERICA, MODEL IHT 1000.
 - RUN ELEVATED PIPING AT 13 FT ABOVE GRADE.
 - RUN 4" HHWS/R DOWN AND TURN 90°.
 - SEE ELEVATED PIPE SUPPORT DETAIL ON SHEET M-501. TYP. OF SIX.
 - RUN PIPING ON THE GROUND. PIPE SUPPORTS SHALL BE COOPER INDUSTRIES MODEL DB10. TYP. FOR TWO.
 - SEE STACKED FOUR PIPE SUPPORT DETAIL ON SHEET M-501. TYP. OF FOUR.
 - SEE ELBOW SUPPORT BRACKET DETAIL ON SHEET M-501. TYP. OF FOUR.
 - SEE STACKED TWO PIPE SUPPORT DETAIL ON SHEET M-501.
 - RUN THE TWO HIGHEST HHWS/R PIPES DOWN AND CONNECT TO DR-1.
 - CONNECT HHWS/R PIPES TO DR-2.
 - RUN PIPING ON THE GROUND. PIPE SUPPORTS SHALL BE COOPER INDUSTRIES MODEL DB10. TYP. FOR THREE.
 - EXISTING AUTOMATED LOGIC HVAC CONTROL SYSTEM PANEL.
 - COORDINATE GAS SERVICE CONNECTION WITH NATIONAL GRID AND OWNER. OWNER SHALL BE RESPONSIBLE FOR GAS SERVICE ALTERATIONS AND INSTALLATION OF METER. CONTRACTOR SHALL BE RESPONSIBLE FOR ALL PIPING DOWNSTREAM OF CONNECTION TO METER.



		CONSULTANTS:				ARCHITECT/ENGINEERS:		Drawing Title		Project Title		Project Number		<div>Office of Facilities Management</div> <div> Department of Veterans Affairs</div>	
		 111 Winners Circle, PO Box 5269 • Albany, NY 12205-0269 Main: (518) 453-4500 • www.chacompanies.com				 QPK DESIGN ARCHITECTURE ENGINEERING SITE & PLANNING 460 2ND AVENUE STRAUSE, NEW YORK, NY 10002 TEL: 314-472-7000 FAX: 314-472-7000 CPK Job Number: 2007000		MECHANICAL PIPING PLAN		COMBINED HEAT & POWER PROJECT		27731			
								Approved Project Director		Location		Drawing Number			
ADDENDUM #3 (UTILITY COMMENTS)		04/7/17								VAMC ALBANY, NY		M-101			
BID SET		06/21/16													
100% SUBMISSION		04/29/16													
95% SUBMISSION (RECIPROCATING ENGINE DESIGN)		04/06/16													
Revisions		Date								Date		Dwg. 3 of 6			