

**Minneapolis VA Medical Center
Building 70
One Veterans Drive
Minneapolis, MN 55417
Bldg 222**

SECTION A:

STATEMENT OF WORK

The VA's Building 222 is being renovated to create more work space for Staff.

This is a furniture requirement. Timely delivery and installation of furniture is essential for government operational use. Installation shall occur in one phase, approximately November 2017.

Upon award, the VA will require that the bill of materials is tagged by area/room for ease of installation. A project manager or project designer and installation foreman must be onsite during installation.

Upon completion of the project, as-built drawings in AutoCAD format must be produced for VA use.

Furniture Project

1. Delivery, staging, and installation/configuration of furniture for the new construction (including all fasteners and fixtures required for assembly), and warranty service in accordance with new construction space requirements that will result in a turn-key furniture solution in accordance with the final furniture design (subject to final working/construction drawings). Installation must be performed by a licensed and bonded installation company, including any proprietary certifications necessary to maintain product warranties.

SECTION B:

Basis of Furniture Specifications

Refine and coordinate directly the following: staging/storage, moving and installation of the following furniture specifications in the new space to ensure a seamless turn-key furniture solution. Purchase of new furniture will be in accordance with activation schedule; timing is critical so no additional storage fees will be charged to the VA. Installation shall occur in one phase.

- Contractor shall provide the following in the proposal: Shop and Installation drawings 2D and 3D of typical, complete product list, detailed cost of product broken down by room, and detailed cost of labor fees. Contractor shall provide GSA contract information, brochures of proposed product, finishes available, warranty information. Provide all samples of fabrics, finishes, and colors.

- Provide a written warranty on all system components from manufacturer, for a period of 10 years, with 24-hour-per-day, 7-days-per-week usage.
- Provide a written warranty on items incorporated into system, not manufactured by Contractor or Sub-contractor for a period of one year.
- All locations will be field measured to verify all furniture will fit into the space.

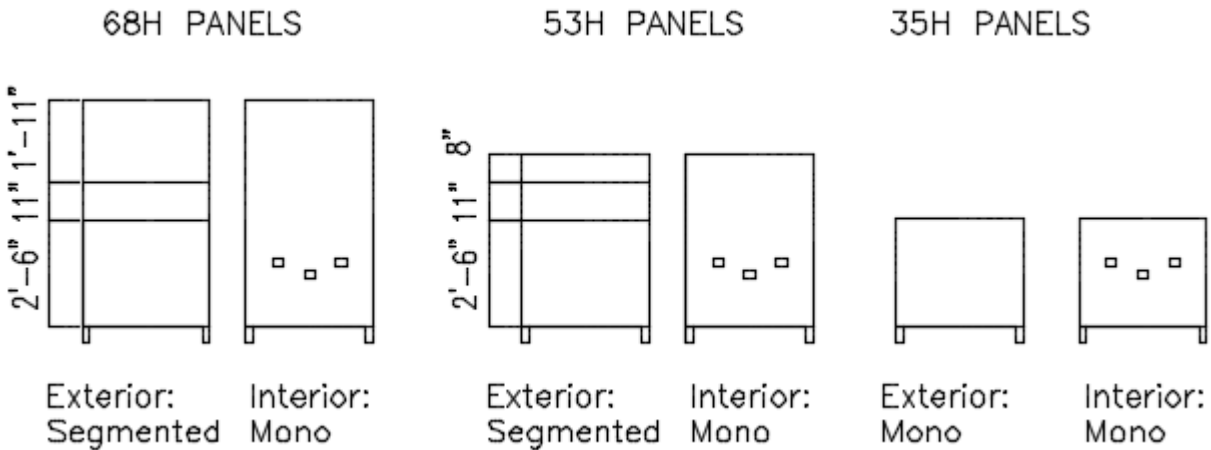
All furniture must have requirements as specified below.

Overall workstation specifications:

- Workstation typical vary depending on location.
- Paint finishes will be standard finish, no metallic finishes, and a medium tone gray/taupe.
- All fabric should be specified as a grade 3, unless otherwise noted.
- Worksurfaces to be 1-1/4" laminate with particle-board core, with grommets (or space for cord management), high-pressure laminate and a flat PVC edgeband and balanced construction. Laminate shall be a neutral color with a linen pattern. No raw wood edges shall be exposed. No self edges allowed.
- Worksurfaces shall be available in 24- or 30-inch depths and widths from 24 inches to 72 inches. They shall be fabricated from high-pressure .05-inch plastic laminate over 1 1/2-inch particle board core with high pressure laminate backer board on the underneath side with squared edge.
- Worksurfaces shall be wall mounted with 84"H wall strips unless otherwise noted as freestanding. Some furniture solutions will require both wall stripped furniture and freestanding supports; please refer to drawings provided for each scenario. Wall strips should not require wall backing for support.
- Worksurfaces that are designated as height adjustable on the plans will require an electric height adjustable mechanism that allows users to alternate between seated and standing height. Range should be 26-46". Laminate tops must be specified to allow for vertical movement and not create pinch-points (1" gap on either side and at the back of worksurface).
- Flipper cabinets shall have locks and have metal fronts. Flipper door shall be able to be removed from shelf if required in the future.
- Workstation panels heights range from approximately 35"H to 68"H. Modular panels shall be a frame system with individual tiles on both sides of the panel. Each frame shall have a top cap, cable management side covers, and adjustable glides up to 1" vertically.
- The frames shall be designed to accommodate hanging components like work surfaces and shelves which could be adjusted in 1" increments. All components must have a safety anti-dislodgment feature.
- Panel system MUST allow power and data to be located within the raceway AND just below standard worksurface height. Electrical duplexes should be at 21" AFF and data jacks should be at 19" AFF.
- Panel system MUST offer sizes starting at 18" wide and ranging in 6" increments up to 60" wide.

- Frames shall have a wire management system that permits both low-voltage and data telecommunications cabling to be accessible at both sides of the frame. Frames must also have the capability to run electrical harnesses for an 8-wire electrical system. The entire system must be UL listed.
- Panel system MUST have “feet” on them to allow for airflow. We need approximately 4” of space under the tiles to allow for nearby radiators to be functional.
- Pedestal drawer shall be freestanding with a lock and fit underneath the worksurface and shall be approximately 15” wide x 22” deep x 26” high and shall not be used as a worksurface support. Two configurations shall be used, a box/box/file pedestal, and a file/file pedestal. The metal pedestal shall be a painted finish which will be a medium tone grey/taupe color. The drawer pull shall be a standard bar style.
- Plastic or metal pencil tray shall be provided in the top drawer of the configured box/box/file cabinets.
- Metal components to be specified in standard colors, no metallic finishes.
- All storage pieces to be steel construction with standard pull style.
- All fabric should be specified as a grade 3, unless otherwise noted.
- Combo cabinets consists of overall dimensions approximately 36” wide x 18” deep by 67” high cabinet the bottom 2 drawers are a lateral file drawers with lock, and the top portion is a double door cabinet with 2 adjustable shelves inside with lock same key as the bottom lateral drawers. Metal steel construction with baked enamel finish, painted color: grey/taupe. The drawer pull shall be a bar style.
- Lateral file cabinets shall be metal steel construction with baked enamel finish, frame type steel base with baked enamel finish, paint color: grey/taupe and 4 leveling glides, metal tops with square edges, locks, hanging file folder rails for front to back filing. Drawer pull shall be a bar style. The file shall hold letter, legal size hanging files. It shall have adjustable glides for leveling, and a positive interlock system that permits only one drawer to open at a time. The lateral file exterior case shall be formed with one single sheet of at least 22 gauge cold rolled steel.
- Storage cabinets shall be metal steel construction with baked enamel finish, with double doors that lock and with adjustable shelves inside, the amount of shelves will vary depending on the height of the cabinet, leveling glides. Cabinet doors shall have a standard bar pull style.
- Bookcases shall be metal steel construction with adjustable shelves.
- All storage pieces must allow ability to key areas alike.

TYPICAL PANEL ELEVATIONS:



Freestanding Side chair specifications:



- Chairs shall be standard seating height of 18"high
- Mid-20th Century design with Scandinavian influence
- Oak wood frame, arms and back in medium tone finish
- Upholstered seat in grade J
- 4 leg, with glides on bottom for carpeted surfaces
- Curved wood back
- Size dimensions 24"w x 23 ½"d x 32"h
- SCS indoor advantage certified.

Desk/Task Chair:

- Task chair shall be approximately 18 ½" deep x no more than 30" overall width, and have the height adjustable range of 16"-20".
- The back of the task chair shall be a material that is lightweight and breathable that allows the users weight to be evenly distributed. The contents of the material shall be mostly elastomeric, and polyester.
- The seat shall have a breathable mesh type upholstery made with all polyester

- Task chair shall have the following adjustments: standard tilt with tilt limiter to limit the range of recline, adjustable lumbar which adjusts up to 4 ½" in height and approximately 1" in depth, seat depth adjustment from 16"-18" depth, height adjustable with the range of 16"-20", non-upholstered adjustable arms that adjust up to 5 ½" vertically and 1" horizontally and 2" forward and back.
- Task chair shall have a 5 star base with 2 ½" black nylon with soft polyurethane thread casters that allow you to be on carpet or tile floors.
- Frame finish shall be painted, no chrome.
- Chair shall ship assembled.

Conference/training room chair (SIN# 71):



- 4 leg and swivel base chair with flip up seat option
- 4 leg base with chrome casters
- Flip up seat which allows nesting capability for moving and ease of storage
- Die cast aluminum legs in standard finish option
- All upholstered in grade 8 material
- Size dimensions 27"w x 24"d x 32"h, with seat height of 18", and arm height of 25".

Conference/training room tables (SIN# 71):

- The purpose of this room is to provide a flexible space that can easily be re-arranged to meet the needs of various group sizes and functions.
- The tables shall be lightweight and easy for one to two people to re-arrange the room themselves. No additional tools should be necessary.
- Training room tables should have a sleek European-style, aesthetic that is light-scale and mobile.
- Tables must have casters, a flip top mechanism and must have ability to nest. Tops should be laminate with PVC edge.

Break Room chair specifications:



- 4-leg chrome leg chair with felt glides for hard surface flooring.
- Upholstered seat pad in graded in vinyl material, highest grade.
- Beech wood veneer seat and back with the upholstered seat pad that is attached to the seat of the shell.
- Stacking at least 4 high.
- Natural beech finish for the wood.
- Size dimensions outside 20"w x 22 ½" d x 33" h, inside seat 17"w x 18"d.
- Chrome legs constructed of tubular steel.
- Armless chair.

Lounge chair specifications:



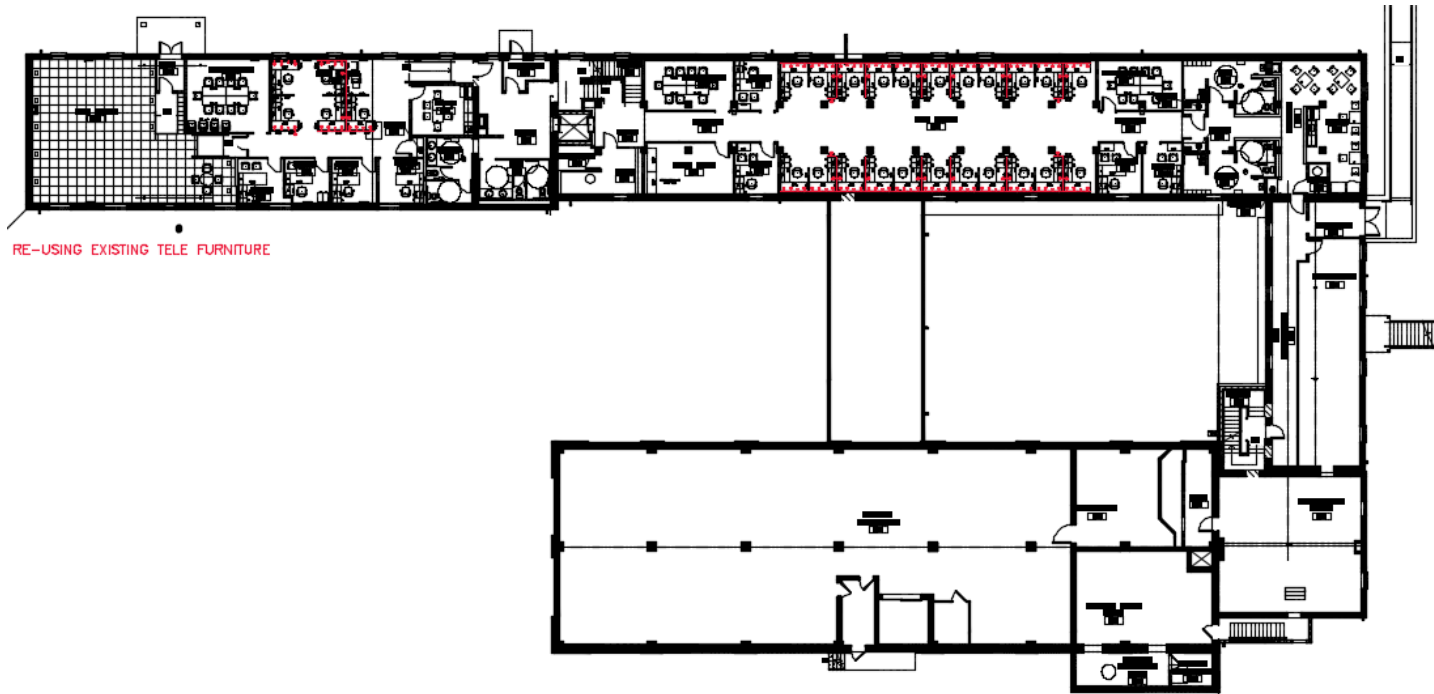
- Mid Century inspired design.
- Lounge chair with integral task surface on the arm.
- Matching ottoman.
- Fully upholstered in a high grade of leather with welt for both the lounge chair and matching ottoman.
- 4 prong self return base.
- SCS Indoor advantage certified.
- Size dimensions of lounge chair 31 ½"d x 39"w x 34"h.
- Size dimensions of ottoman 15"d x 19"w x 14 ½" h.

Occasional Table specifications:

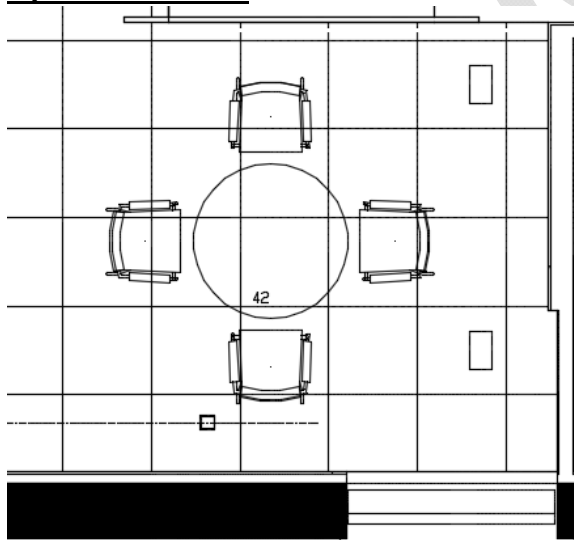


- Table top size dimensions 29 ½" in diameter
- Natural beech finish top veneer wood
- Base in chrome finish, size 22"h

Overall Lower Level layout:

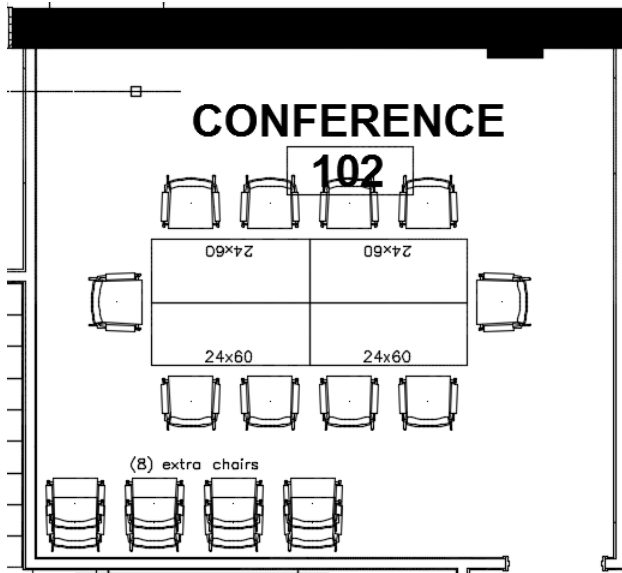


Open Office 100:



- (1) 42" round table with laminate top and metal X-base.
- (4) training room chairs.

Conference 102:

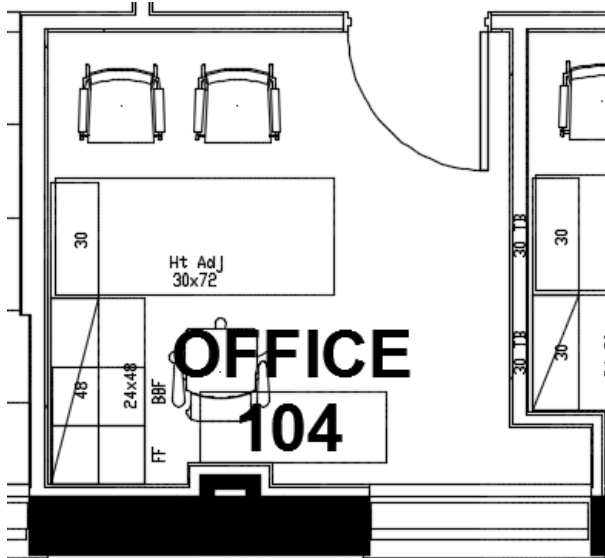


- (4) 24x60 training tables
- (18) training room chairs

Open Office 103:

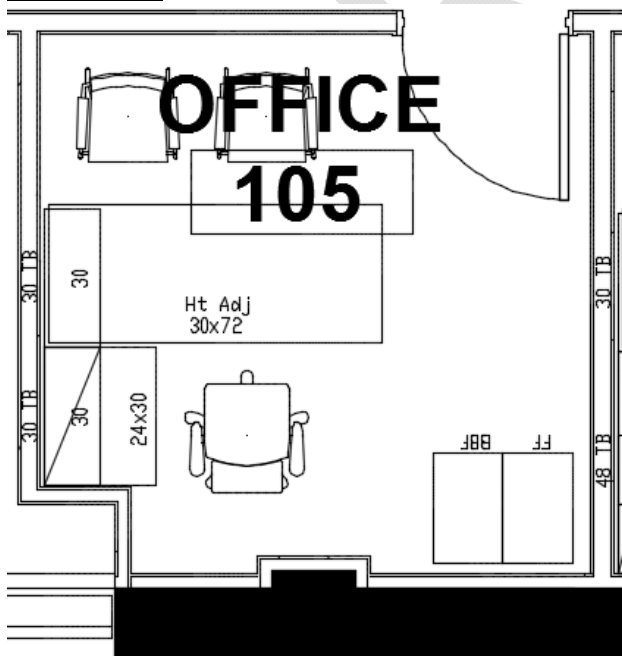
Each workstation (w/ spine panels) shall include (4) duplex receptacles and an opening accounted for VA provided data jacks. Power and data shall be located as shown in red on plan below.

Specify all parts and pieces necessary to complete the layout shown below. AutoCAD also available for use:



- (1) 30x72, height adjustable.
- (1) 24x48 worksurface, mounted with wall strips.
- (1) BBF pedestal.
- (1) FF pedestal.
- (1) 30W open shelf, with tasklight (daisy-chained).
- (1) 36W overhead bin, with tasklight (daisy-chained).
- (1) 30W tackboard.
- (1) 36W tackboard.
- (1) task chair.
- (2) side chairs.

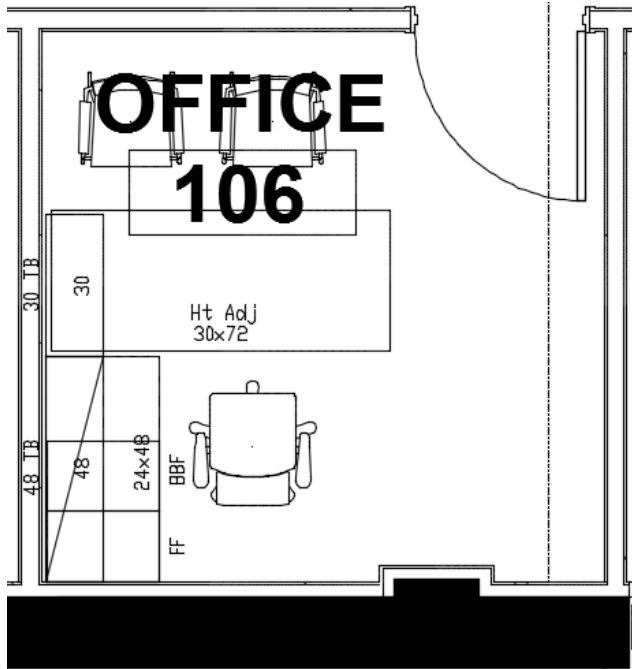
Office 105:



- (1) 30x72, height adjustable.

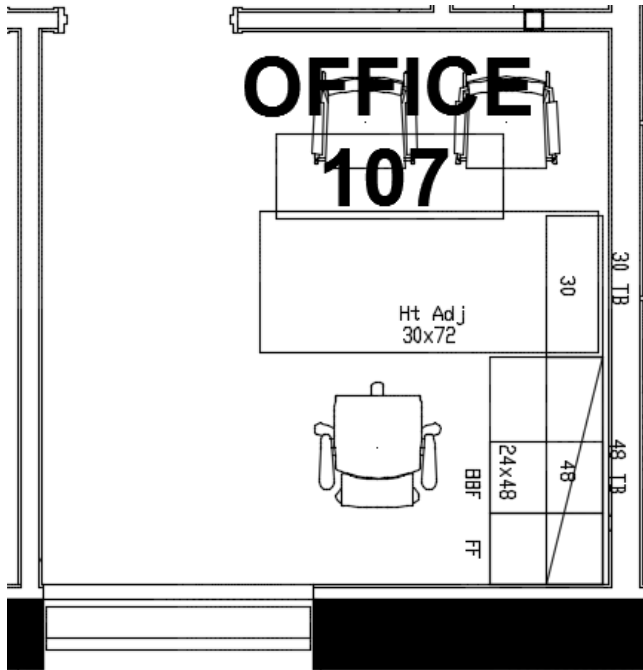
- (1) 24x30 worksurface, mounted with wall strips.
- (1) BBF pedestal.
- (1) FF pedestal.
- (1) 30W open shelf, with tasklight (daisy-chained).
- (1) 30W overhead bin, with tasklight (daisy-chained).
- (2) 30W tackboards.
- (1) task chair.
- (2) side chairs.

Office 106:



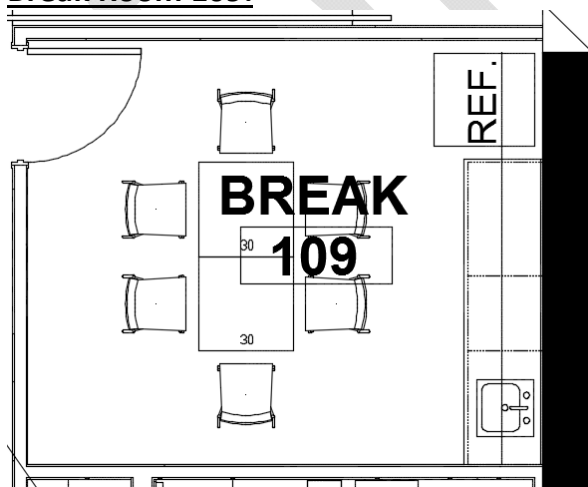
- (1) 30x72, height adjustable.
- (1) 24x48 worksurface, mounted with wall strips.
- (1) BBF pedestal.
- (1) FF pedestal.
- (1) 30W open shelf, with tasklight (daisy-chained).
- (1) 36W overhead bin, with tasklight (daisy-chained).
- (1) 30W tackboard.
- (1) 36W tackboard.
- (1) task chair.
- (2) side chairs.

Office 107:



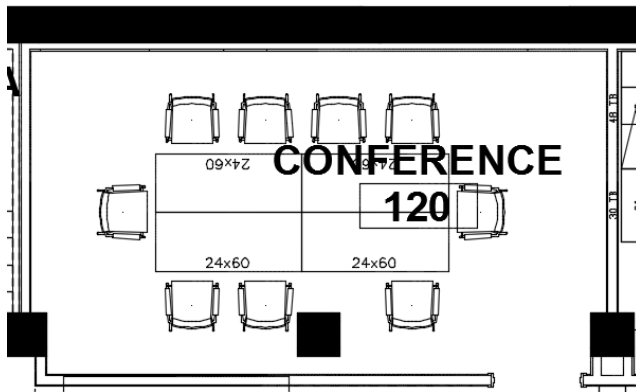
- (1) 30x72, height adjustable.
- (1) 24x48 worksurface, mounted with wall strips.
- (1) BBF pedestal.
- (1) FF pedestal.
- (1) 30W open shelf, with tasklight (daisy-chained).
- (1) 36W overhead bin, with tasklight (daisy-chained).
- (1) 30W tackboard.
- (1) 36W tackboard.
- (1) task chair.
- (2) side chairs.

Break Room 109:



- (2) 30" square laminate tables with metal X-bases.
- (6) break room chairs.

Conference 120:



- (4) 24x60 training tables.
- (9) training room chairs.

Work Room 121



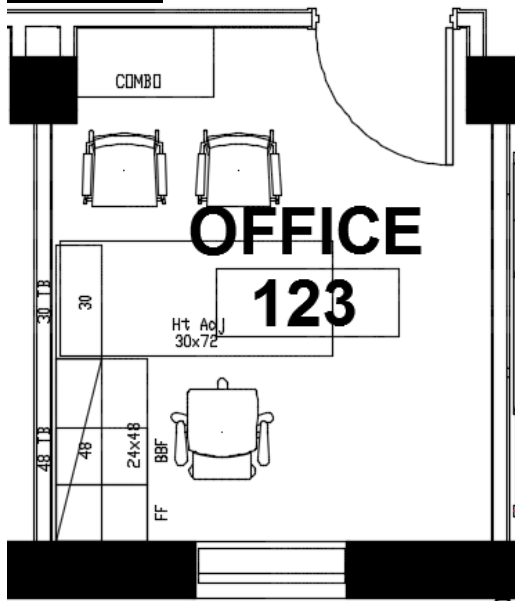
- (2) 24x60 tables with height adjustable post legs and locking casters.

Office 122:



- (1) 30x72, height adjustable.
- (1) 24x48 worksurface, mounted with wall strips.
- (1) BBF pedestal.
- (1) FF pedestal.
- (1) 30W open shelf, with tasklight (daisy-chained).
- (1) 36W overhead bin, with tasklight (daisy-chained).
- (1) 30W tackboard.
- (1) 36W tackboard.
- (1) combo file.
- (1) task chair.
- (2) side chairs.

Office 123:

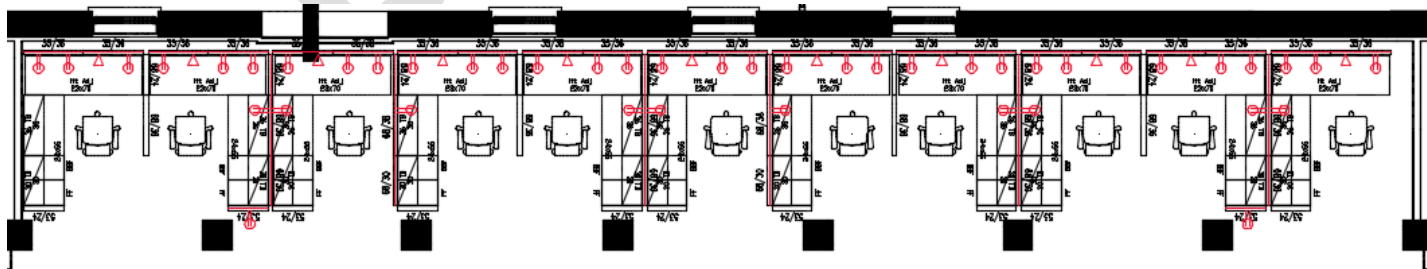


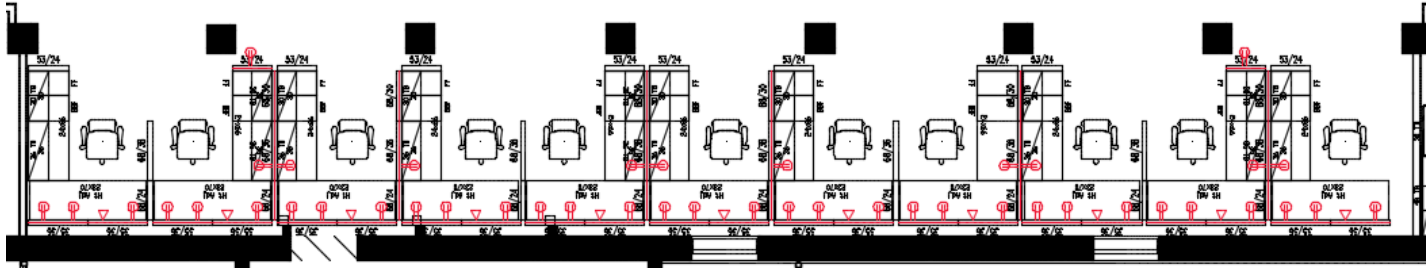
- (1) 30x72, height adjustable.
- (1) 24x48 worksurface, mounted with wall strips.
- (1) BBF pedestal.
- (1) FF pedestal.
- (1) 30W open shelf, with tasklight (daisy-chained).
- (1) 36W overhead bin, with tasklight (daisy-chained).
- (1) 30W tackboard.
- (1) 36W tackboard.
- (1) combo file.
- (1) task chair.
- (2) side chairs.

Open Office 124:

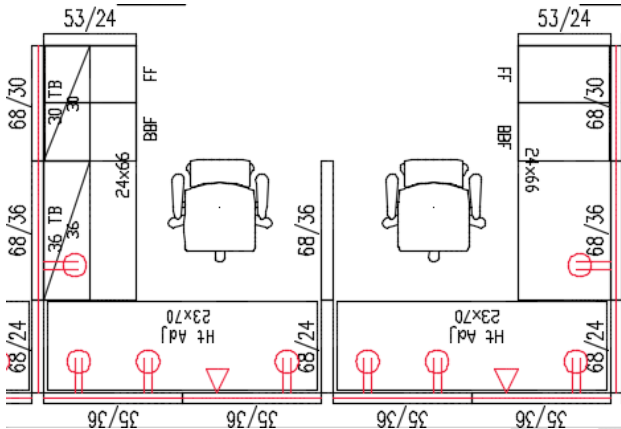
Each workstation (w/ spine panels) shall include (4) duplex receptacles and an opening accounted for VA provided data jacks. Power and data shall be located as shown on plan below.

Specify all parts and pieces necessary to complete the layout shown below. AutoCAD also available for use:



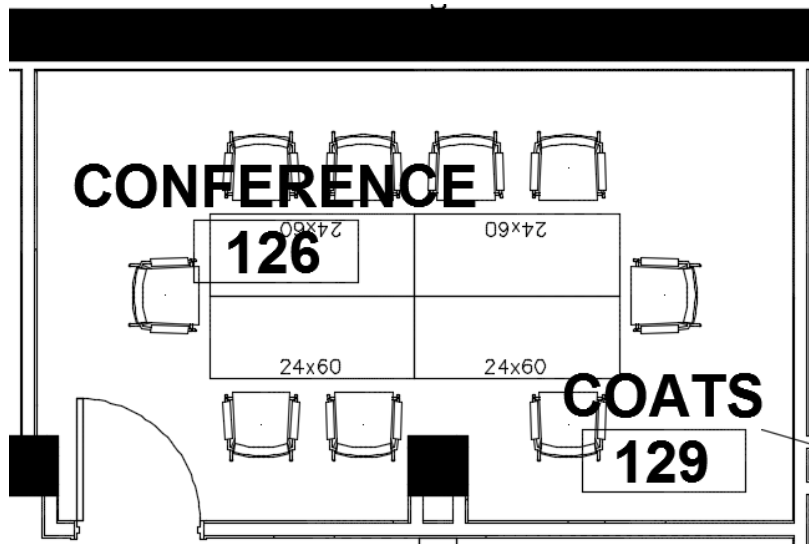


(22) workstations each to include:



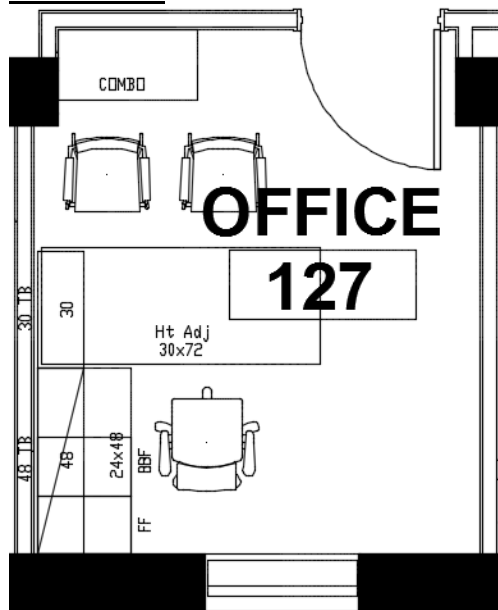
- (1) 23x70 worksurface, height adjustable.
- (1) 24x66 worksurface
- (1) BBF pedestal.
- (1) FF pedestal.
- (1) 30W overhead bin, with tasklight (daisy-chained).
- (1) 36W overhead bin, with tasklight (daisy-chained).
- (1) 30W tackboard.
- (1) 36W tackboard.
- (1) task chair.

Conference 126:



- (4) 24x60 training tables.
- (9) training room chairs.

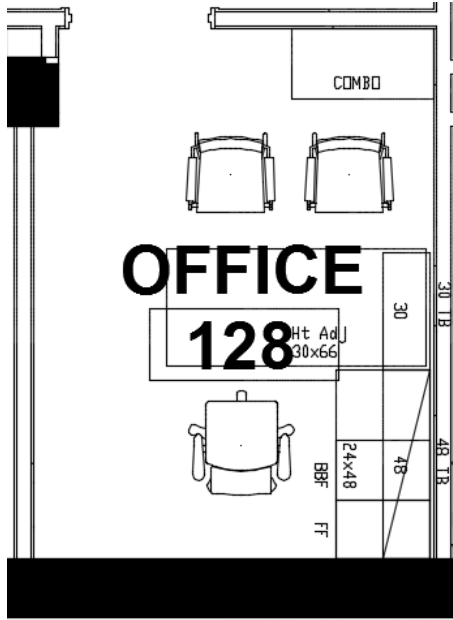
Office 127:



- (1) 30x72, height adjustable.
- (1) 24x48 worksurface, mounted with wall strips.
- (1) BBF pedestal.
- (1) FF pedestal.
- (1) 30W open shelf, with tasklight (daisy-chained).
- (1) 36W overhead bin, with tasklight (daisy-chained).
- (1) 30W tackboard.
- (1) 36W tackboard.

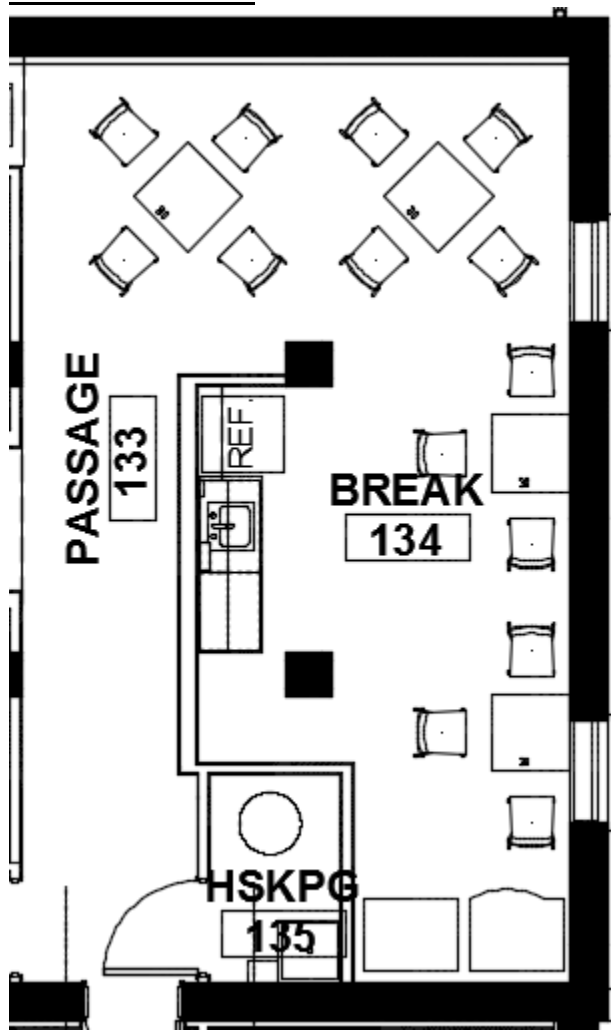
- (1) combo file.
- (1) task chair.
- (2) side chairs.

Office 128:



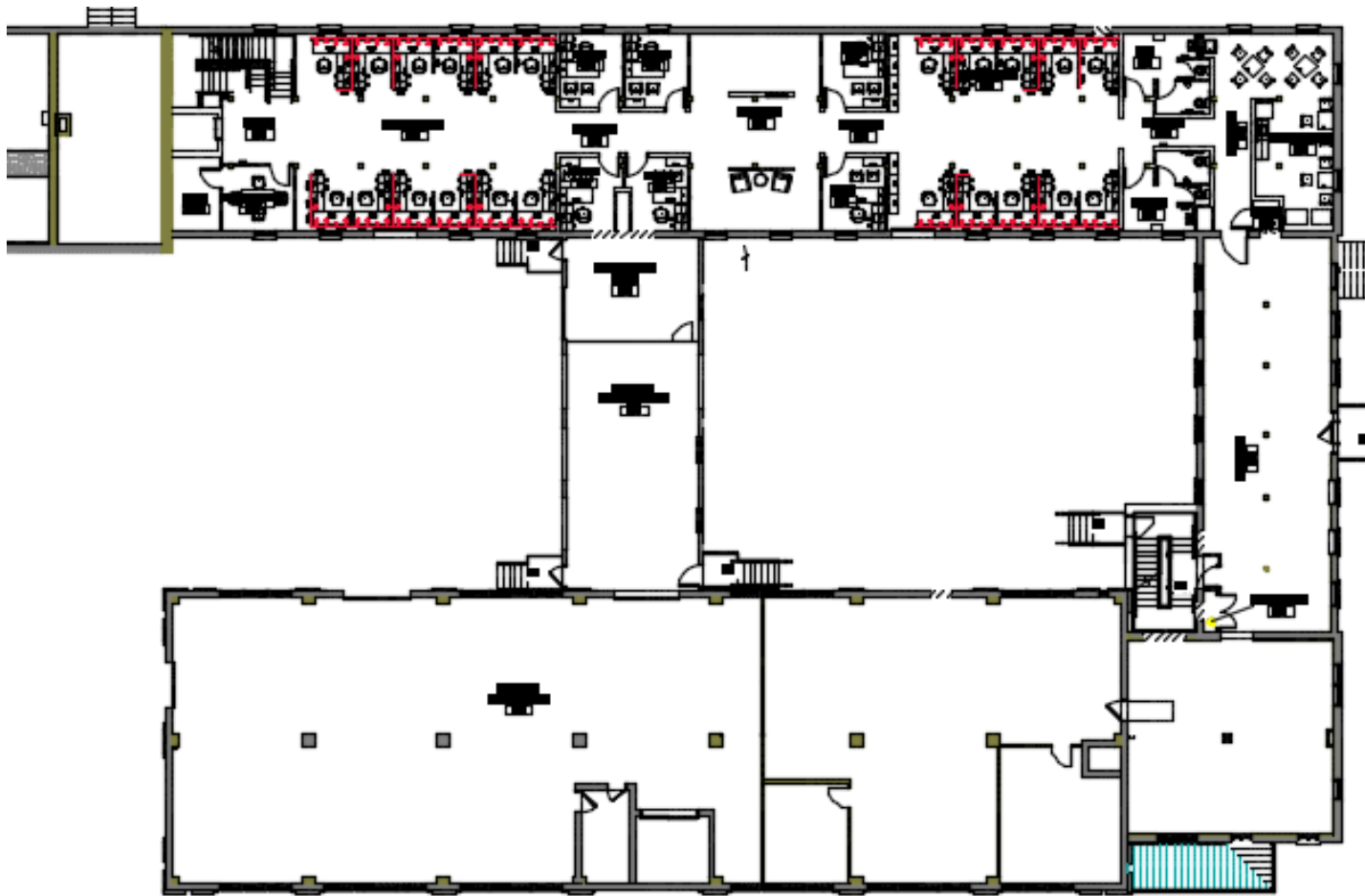
- (1) 30x66, height adjustable.
- (1) 24x48 worksurface, mounted with wall strips.
- (1) BBF pedestal.
- (1) FF pedestal.
- (1) 30W open shelf, with tasklight (daisy-chained).
- (1) 36W overhead bin, with tasklight (daisy-chained).
- (1) 30W tackboard.
- (1) 36W tackboard.
- (1) combo file.
- (1) task chair.
- (2) side chairs.

Break Room 134:



- (4) 30" square laminate tables with metal X-bases.
- (14) break room chairs, vinyl seat.

Overall Main Level layout:



Conference 201:

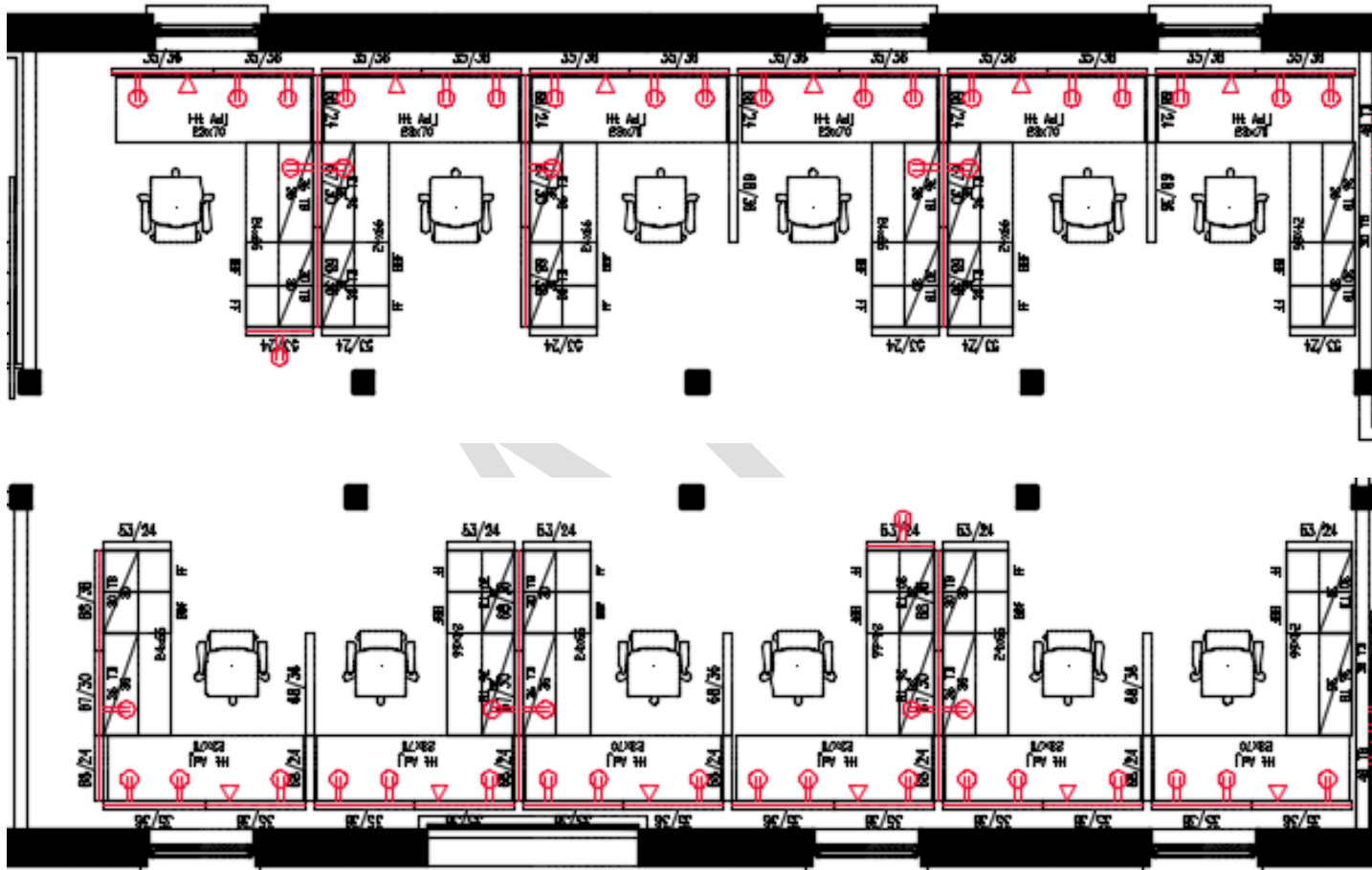


- (1) 30x60 laminate table with PVC edge and metal T-base style legs with locking casters.
- (6) training room chairs (2 extra not shown).

Open Office 203:

Each workstation (w/ spine panels) shall include (4) duplex receptacles and an opening accounted for VA provided data jacks. Power and data shall be located as shown on plan below.

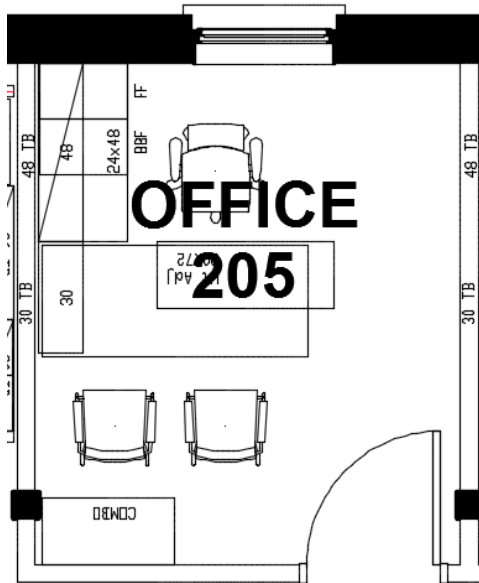
Specify all parts and pieces necessary to complete the layout shown below. AutoCAD also available for use:



(12) workstations each to include:

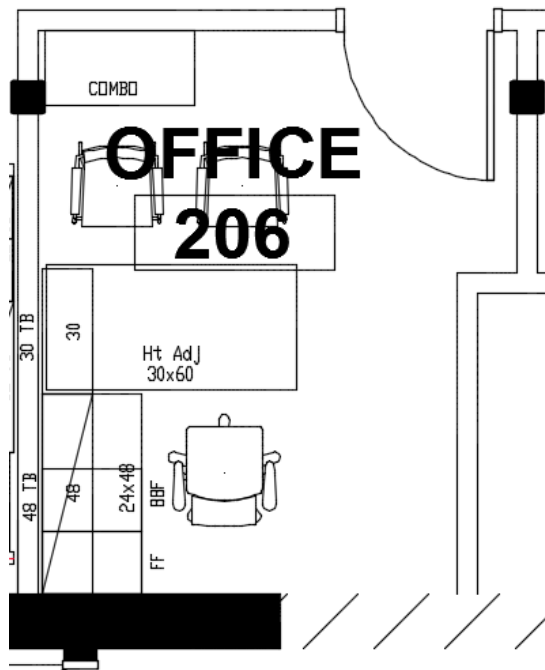
- (1) 23x70 worksurface, height adjustable.
- (1) 24x66 worksurface
- (1) BBF pedestal.
- (1) FF pedestal.
- (1) 30W overhead bin, with tasklight (daisy-chained).
- (1) 36W overhead bin, with tasklight (daisy-chained).
- (1) 30W tackboard.
- (1) 36W tackboard.
- (1) task chair.

Office 205:



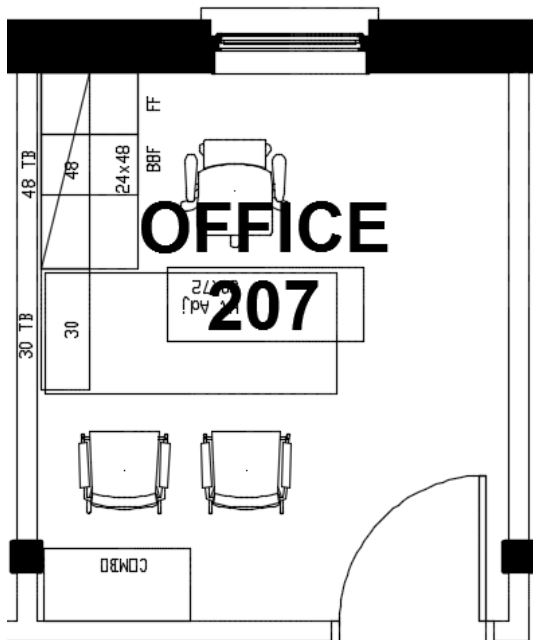
- (1) 30x72, height adjustable.
- (1) 24x48 worksurface, mounted with wall strips.
- (1) BBF pedestal.
- (1) FF pedestal.
- (1) 30W open shelf, with tasklight (daisy-chained).
- (1) 36W overhead bin, with tasklight (daisy-chained).
- (1) 30W tackboard.
- (1) 36W tackboard.
- (1) combo file.
- (1) task chair.
- (2) side chairs.

Office 206:



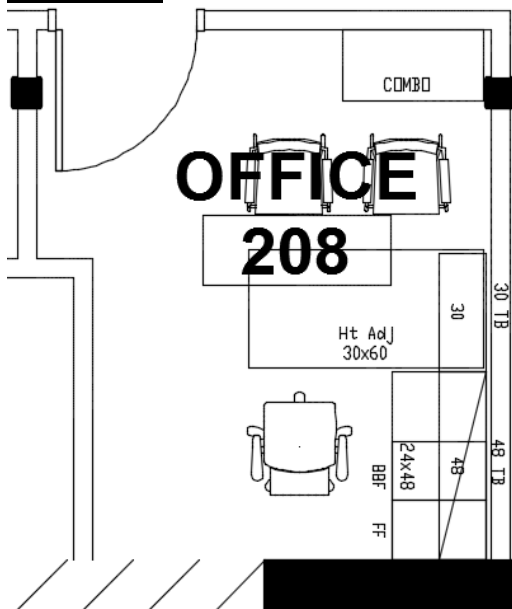
- (1) 30x60, height adjustable.
- (1) 24x48 worksurface, mounted with wall strips.
- (1) BBF pedestal.
- (1) FF pedestal.
- (1) 30W open shelf, with tasklight (daisy-chained).
- (1) 36W overhead bin, with tasklight (daisy-chained).
- (1) 30W tackboard.
- (1) 36W tackboard.
- (1) combo file.
- (1) task chair.
- (2) side chairs.

Office 207:



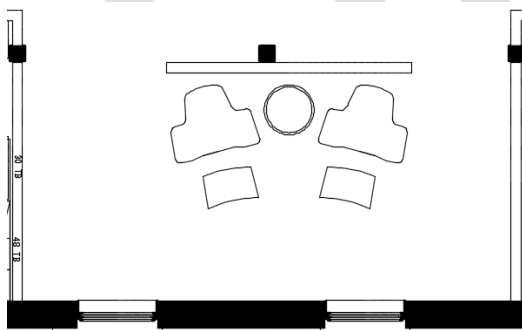
- (1) 30x72, height adjustable.
- (1) 24x48 worksurface, mounted with wall strips.
- (1) BBF pedestal.
- (1) FF pedestal.
- (1) 30W open shelf, with tasklight (daisy-chained).
- (1) 36W overhead bin, with tasklight (daisy-chained).
- (1) 30W tackboard.
- (1) 36W tackboard.
- (1) combo file.
- (1) task chair.
- (2) side chairs.

Office 208:



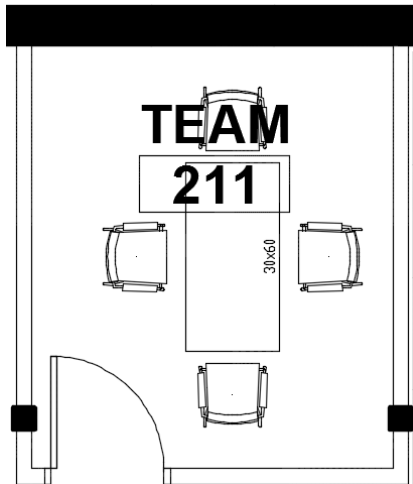
- (1) 30x60, height adjustable.
- (1) 24x48 worksurface, mounted with wall strips.
- (1) BBF pedestal.
- (1) FF pedestal.
- (1) 30W open shelf, with tasklight (daisy-chained).
- (1) 36W overhead bin, with tasklight (daisy-chained).
- (1) 30W tackboard.
- (1) 36W tackboard.
- (1) combo file.
- (1) task chair.
- (2) side chairs.

Gallery 209:



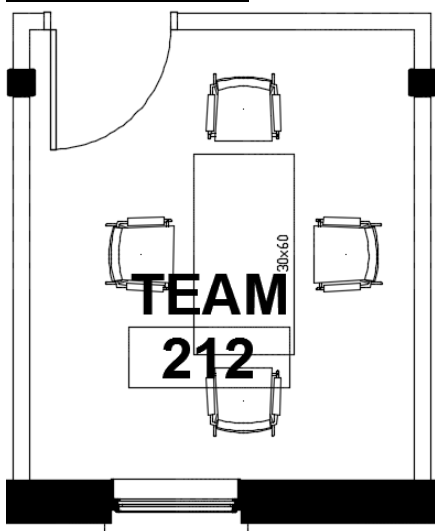
- (2) lounge chairs with ottomans.
- (1) 24" round occasional table.

Team Room 211:



- (1) 30x60 laminate table with PVC edge and metal T-base style legs with locking casters.
- (6) training room chairs (2 extra chairs not shown).

Team Room 212:

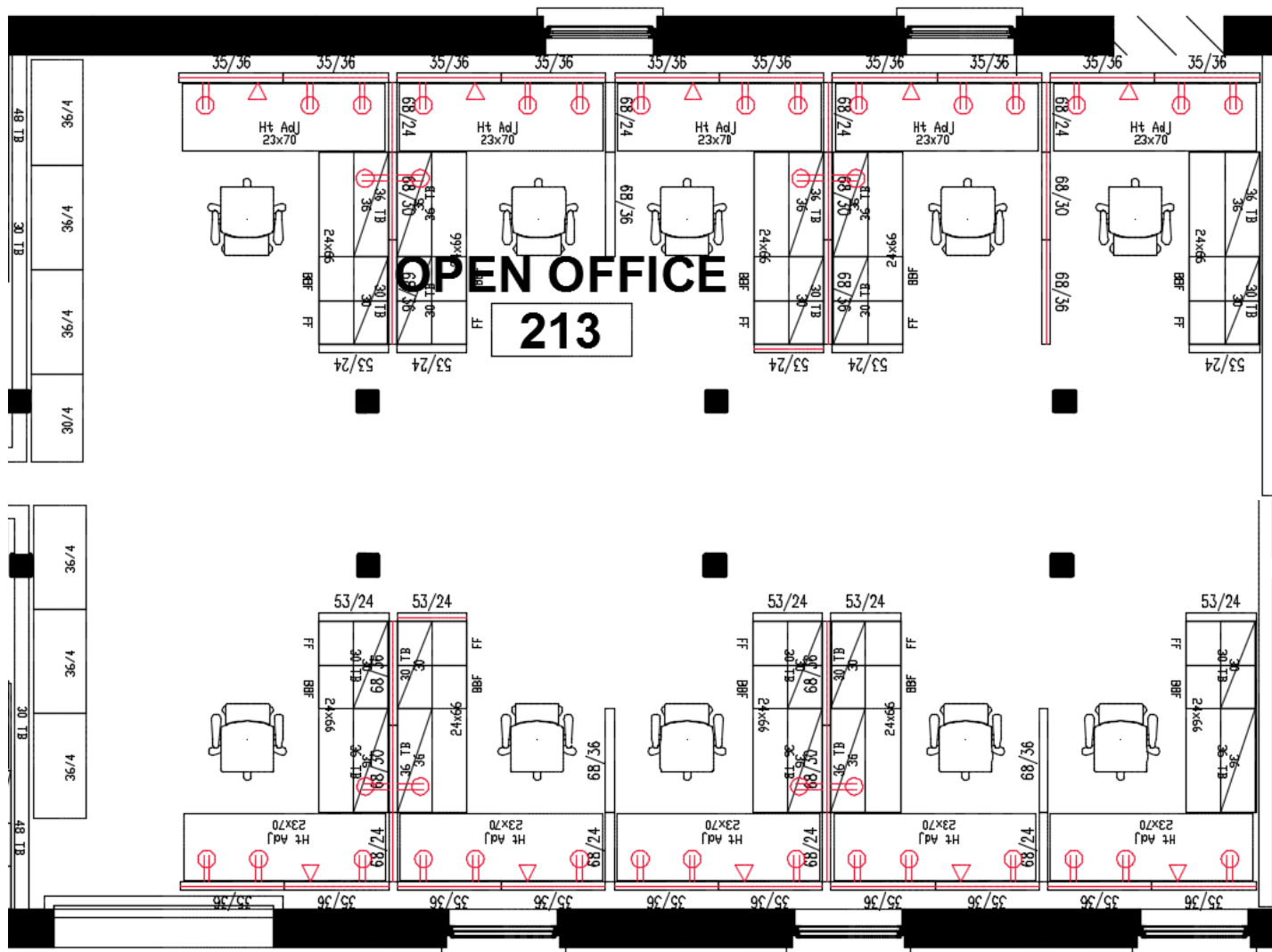


- (1) 30x60 laminate table with PVC edge and metal T-base style legs with locking casters.
- (6) training room chairs (2 extra chairs not shown).

Open Office 213:

Each workstation (w/ spine panels) shall include (4) duplex receptacles and an opening accounted for VA provided data jacks. Power and data shall be located as shown on plan below.

Specify all parts and pieces necessary to complete the layout shown below. AutoCAD also available for use:

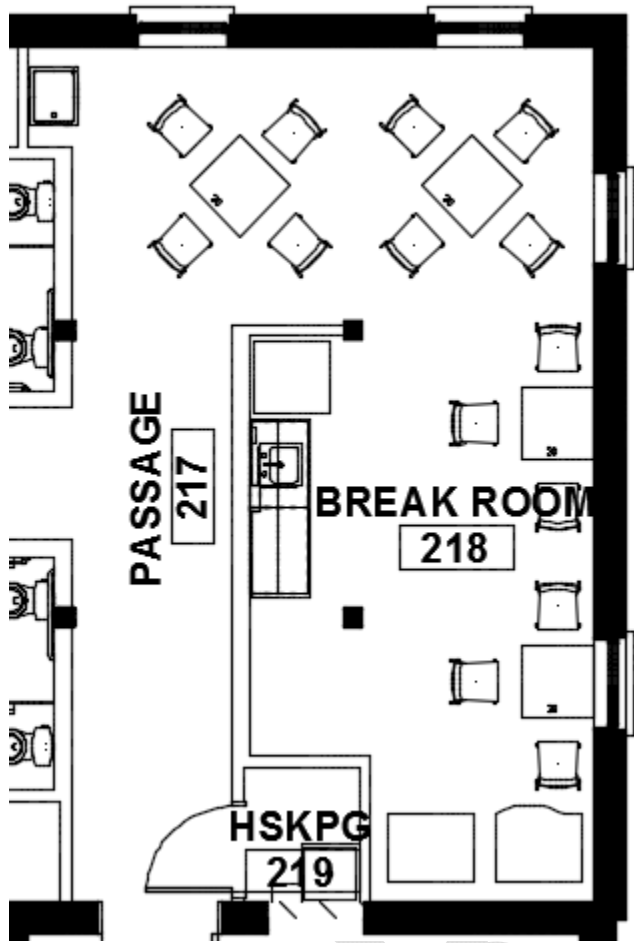


- (6) 36W 4-drawer lateral files
- (1) 30W 4-drawer lateral file

(10) workstations each to include:

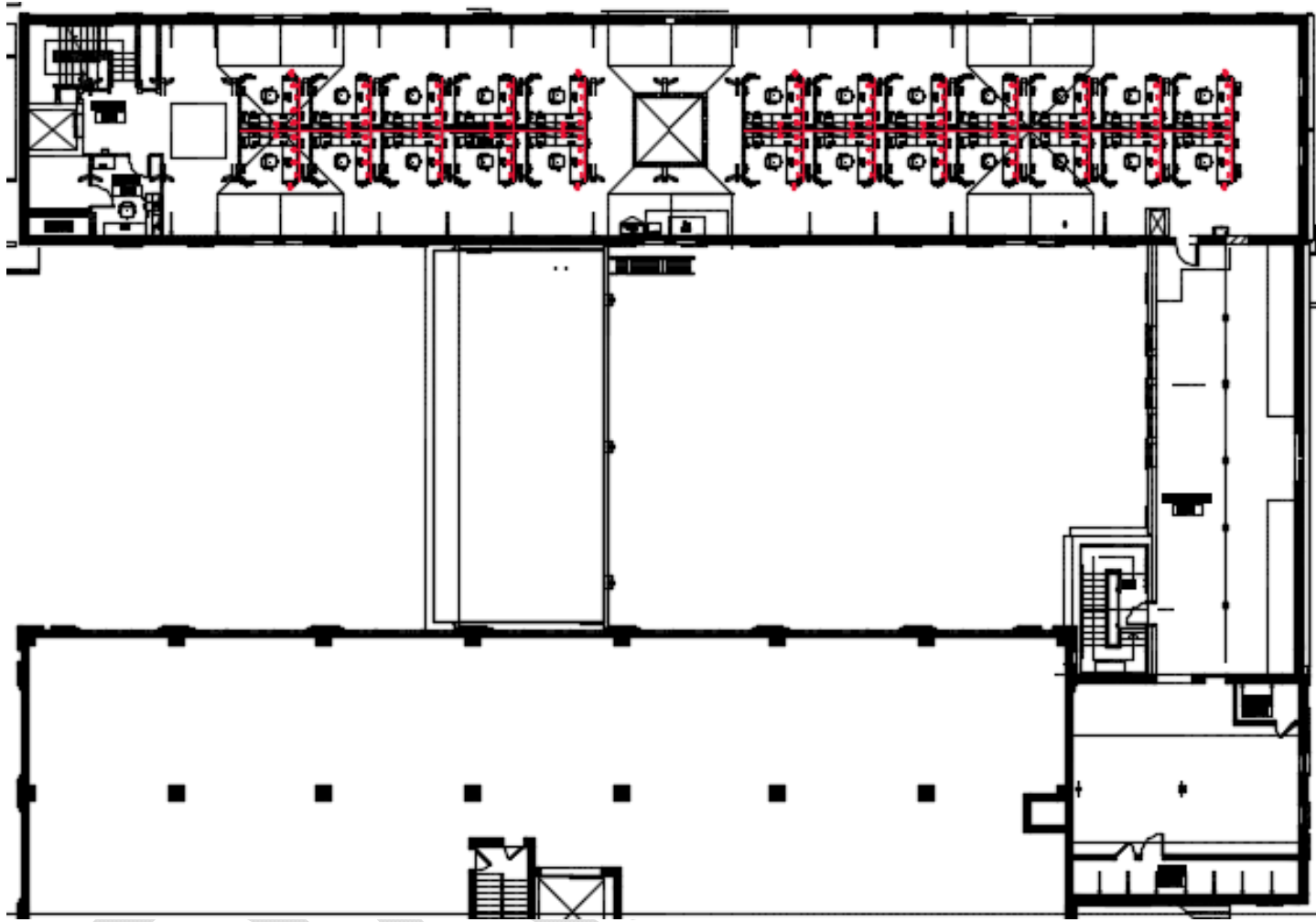
- (1) 23x70 worksurface, height adjustable.
- (1) 24x66 worksurface
- (1) BBF pedestal.
- (1) FF pedestal.
- (1) 30W overhead bin, with tasklight (daisy-chained).
- (1) 36W overhead bin, with tasklight (daisy-chained).
- (1) 30W tackboard.
- (1) 36W tackboard.
- (1) task chair.

Break Room 218:

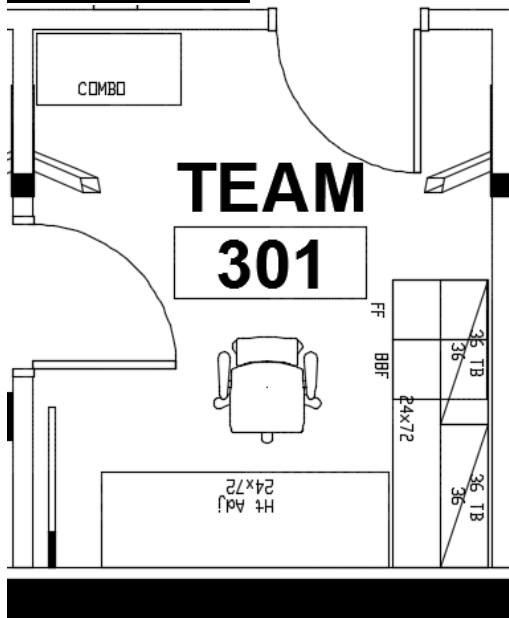


- (4) 30" square laminate tables with metal X-bases.
- (14) break room chairs, vinyl seat.

Overall Attic Level layout:



Team Room 301:

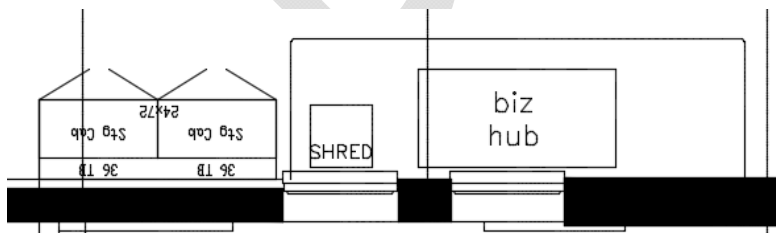


- (1) 23x70, height adjustable.
- (1) 24x72 worksurface.
- (1) BBF pedestal.
- (1) FF pedestal.
- (2) 36W overhead bin, with tasklight (daisy-chained).
- (2) 36W tackboard.
- (1) combo file.
- (1) task chair.
- (2) side chairs (not shown).

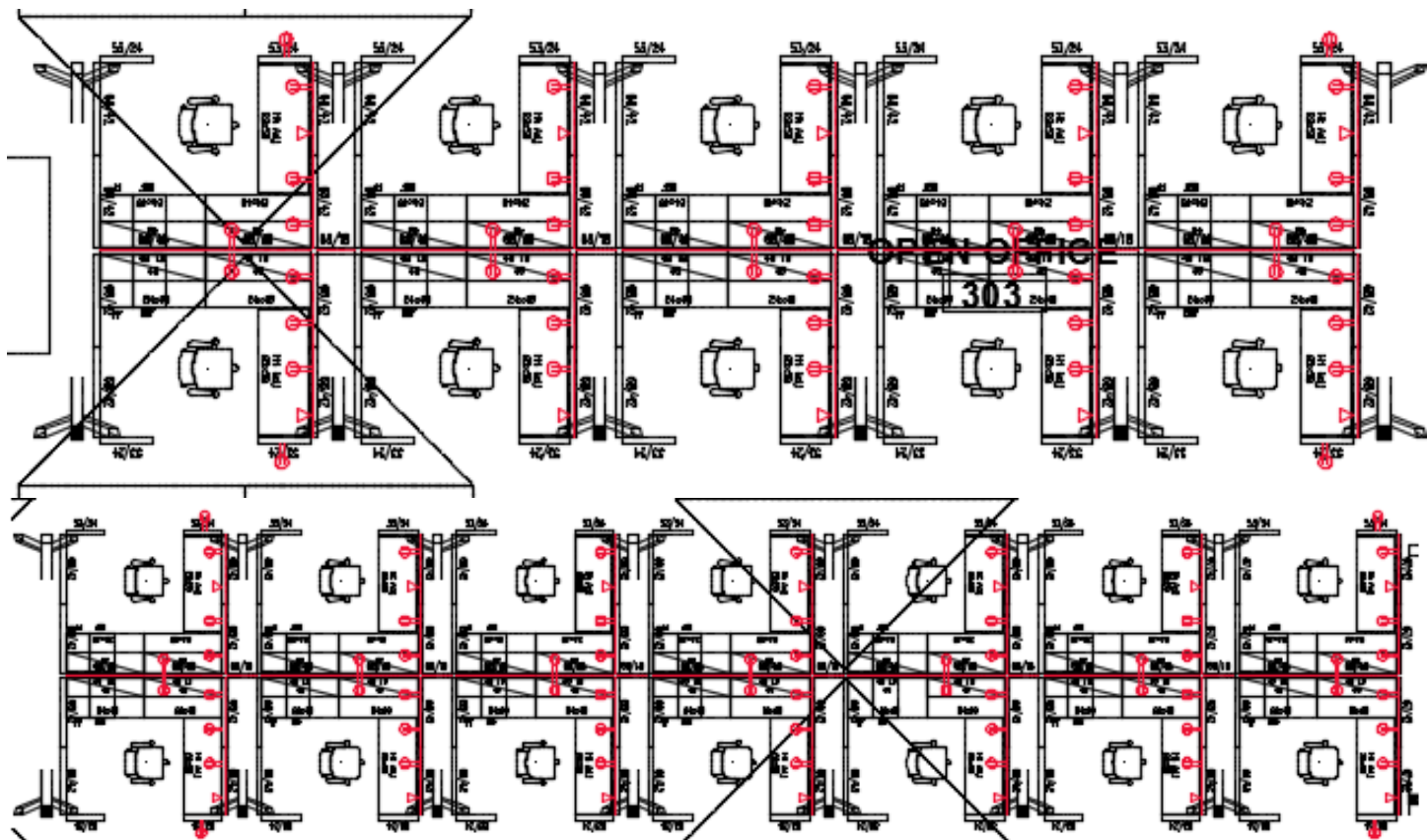
Open Office 303:

Each workstation (w/ spine panels) shall include (4) duplex receptacles and an opening accounted for VA provided data jacks. Power and data shall be located as shown on plan below.

Specify all parts and pieces necessary to complete the layout shown below. AutoCAD also available for use:



- (1) 24x72 worksurface.
- (2) 36W tackboards.
- (2) 39Hx36W storage cabinets.



(24) workstations each to include:

- (2) 24x48 worksurfaces.
- (1) 23x58 worksurface, height adjustable.
- (1) BBF pedestal.
- (1) FF pedestal.
- (2) 48W overhead bins, with tasklight (daisy-chained).
- (2) 48W tackboards.
- (1) task chair.

SECTION C

DELIVERY:

Delivery [FOB Destination], installation/configuration of all furniture solutions must be managed and completed by a project manager from the vendor. Participation in progress meetings will be required as necessary to ensure successful furniture project.

The Minneapolis VAMC delivery/install details are:

Deliveries must be managed and completed in coordination with the construction schedule as well as Minneapolis VAMC hours, restrictions and regulations. Regular Business hours for the dock are 8AM-3:30PM. This includes, but is not limited to, the following:

- Minneapolis VAMC will not provide equipment, tools or labor to assist in furniture deliveries. All necessary equipment and manpower must be included in bid.

Minneapolis VAMC will not provide on-site storage for furniture requirements. Necessary storage must be included in proposal.

Any damage to the Minneapolis VAMC facility incurred through the installation process must be repaired within 30 days at the furniture vendor's expense.

Vendor is responsible for notifying VA Interior Design contact in advance of arrival and departure, providing review of all product and site conditions before sign off. Work is to be performed between 8:00am and 4:30pm weekdays unless specifically coordinated otherwise.

Deliveries must be scheduled & coordinated through the VA interior designer before installation. Delivery shall be made directly to Building 222 loading dock. The address is 6330 Bloomington Road St. Paul MN 55111.

SECTION D

Required Bid Package:

- Include warranty information for each manufacturer as well as proof that furnishings meet the spec (i.e. panel STC rating, etc...).
- The bid should include a bill of materials with product subtotal, labor line item and total cost.
- The bid should include an overall floorplan in PDF format, 1/8" scale, with vendor specific title block; and match-lined drawings are acceptable. The following 3-Dimensional drawings are required in PDF format (PDF should be titled with the following room descriptions):
 - Typical workstation
 - Private Office Typical
 - 6-pack of workstations

- After contract is awarded, a meeting with vendor's designer and project manager, and VA interior designer is required. There will be revisions to the furnishings. The furniture will need to be ordered and installed in accordance with vendor's field measure.

DRAFT