

SUITE DESCRIPTIONS

SUITE NUMBER	SUITE NAME	SUITE SIZE	TYPE OF SUITE	EXIT NUMBER
5	PERFORMANCE IMPROVEMENT SUITE	2,010 Sq. Ft.	NON SLEEPING PATIENT CARE	1
6	PHARMACY SUITE	5,220 Sq. Ft.	NON PATIENT CARE	2
7	ONCOLOGY SUITE	1,665 Sq. Ft.	NON SLEEPING PATIENT CARE	1
8	URGENT CARE SUITE	3,700 Sq. Ft.	NON SLEEPING PATIENT CARE	3

KEY NOTES:

- 1 SPRINKLERS LOCATED ABOVE AUDIO BOOTHS.
- 2 SPRINKLER LOCATED ABOVE COOLERS.
- 3 1 HOUR FIRE RATED SHAFT SEPARATION ABOVE.

SYMBOLS LIST

- 3 HOUR FIREWALL
- 2 HOUR FIREWALL
- 1 HOUR FIREWALL
- 2 HOUR FIRE/SMOKEWALL
- 1 HOUR FIRE/SMOKEWALL
- 30 MINUTE SMOKE BARRIER
- SMOKE RESISTIVE HAZARDOUS AREA
- NON RATED SMOKE PARTITION
- NON-RATED SMOKE BARRIER (COMMUNICATING SPACE)
- NON-FIRE-RATED PARTITION
- HE

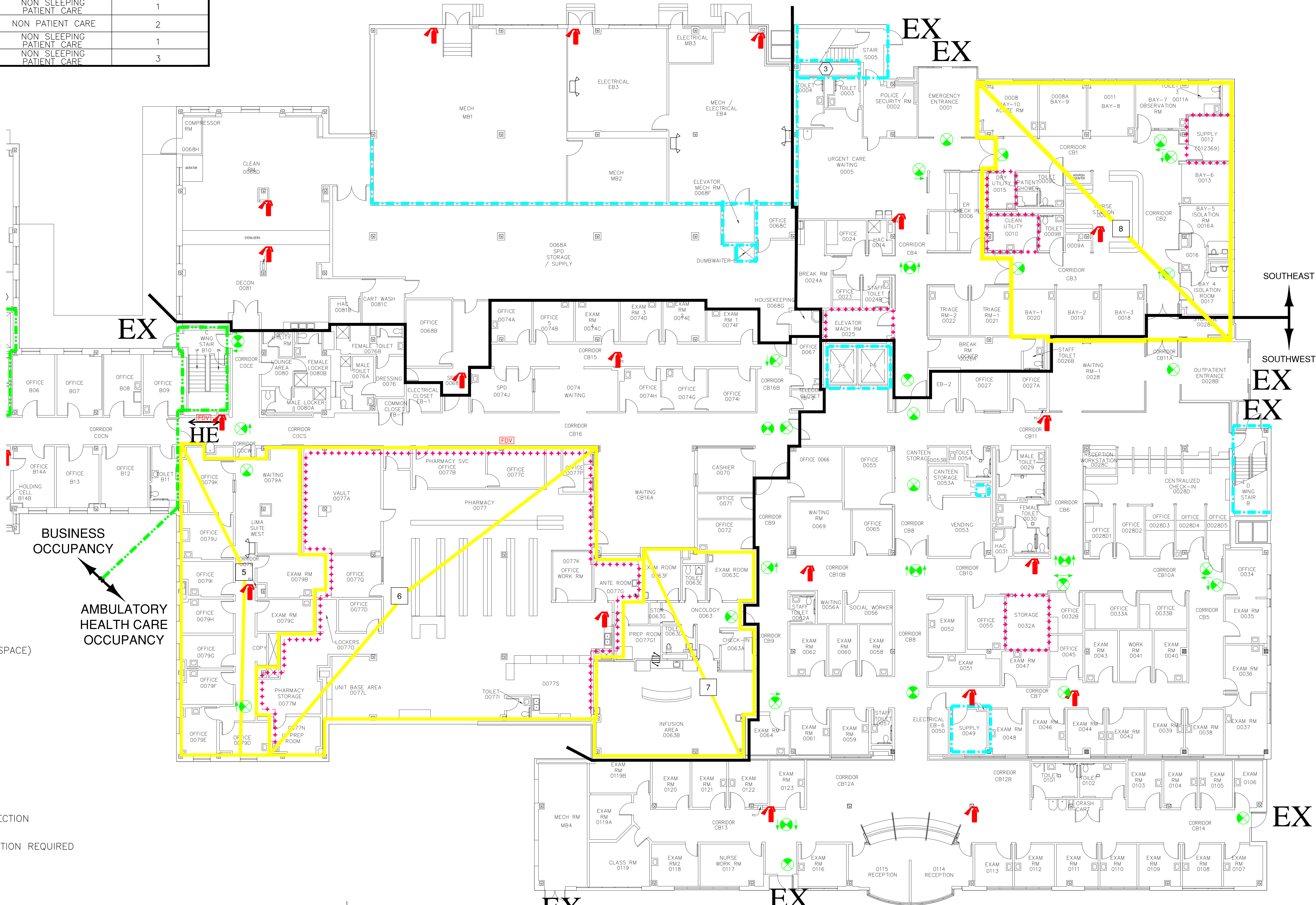
HORIZONTAL EXIT PASSAGEWAY
- EX

EXIT
- EP

EXIT PASSAGEWAY
- LC


LINEN CHUTE
- SUITE DESIGNATIONS
- AREA OPEN TO CORRIDOR – WITH SMOKE DETECTION
- AREA OPEN TO CORRIDOR – NO SMOKE DETECTION REQUIRED
- EXIT STAIR OR PASSAGEWAY
- F

MANUAL PULL STATION
- FIRE EXTINGUISHER



BUILDING 1 BASEMENT FLOOR SOUTH

FULLY SPRINKLERED
BUSINESS OCCUPANCY

Revisions	Date		Dept. of Veterans Affairs Health Care Center 2300 Ramsey St. Fayetteville, NC 28301		FIRE PROTECTION & CODE CONSULTANTS, LLC 1301 MAIN STREET INDIANAPOLIS, IN 46224 (317)486-5188	Drawing Title	Client Project No.	Contract No.	Project Title	Designed By	Checked By	Drawn By	Date	Drawing No.
FP&C Proj. #:	1694.14					BUILDING 1 BASEMENT FLOOR SOUTH	Building No. MAIN	AutoCAD File Name SOC01,02 1-B	STATEMENT OF CONDITIONS	FVO	FVO	DN	12/27/16	SOC-2
										Location VA HEALTH CARE CENTER FAYETTEVILLE, NORTH CAROLINA		Scale: NO SCALE		Sht. 3 Of 10