

SUITE DESCRIPTIONS

SUITE NUMBER	SUITE NAME	SUITE SIZE	TYPE OF SUITE	EXIT NUMBER
1	HR EAST OFFICE SUITE	1,865 Sq. Ft.	NON PATIENT CARE	1
2	HR WEST OFFICE SUITE	2,765 Sq. Ft.	NON PATIENT CARE	2
3	LAB SUITE	9,140 Sq. Ft.	NON PATIENT CARE	2
4	RADIOLOGY SUITE	3,435 Sq. Ft.	NON SLEEPING PATIENT CARE	4
5	MRI SUITE	1,270 Sq. Ft.	NON SLEEPING PATIENT CARE	1
6	NUC. MED AND C.T. SUITE	3,530 Sq. Ft.	NON SLEEPING PATIENT CARE	2

KEY NOTES:

- 1 SPRINKLERS LOCATED ABOVE AUDIO BOOTHS.
- 2 SPRINKLER LOCATED ABOVE COOLERS.

SYMBOLS LIST

- 3 HOUR FIREWALL
- 2 HOUR FIREWALL
- 1 HOUR FIREWALL
- 2 HOUR FIRE/SMOKEWALL
- 1 HOUR FIRE/SMOKEWALL
- 30 MINUTE SMOKE BARRIER
- SMOKE RESISTIVE HAZARDOUS AREA
- NON RATED SMOKE PARTITION
- NON-RATED SMOKE BARRIER (COMMUNICATING SPACE)
- NON-FIRE-RATED PARTITION
- HE

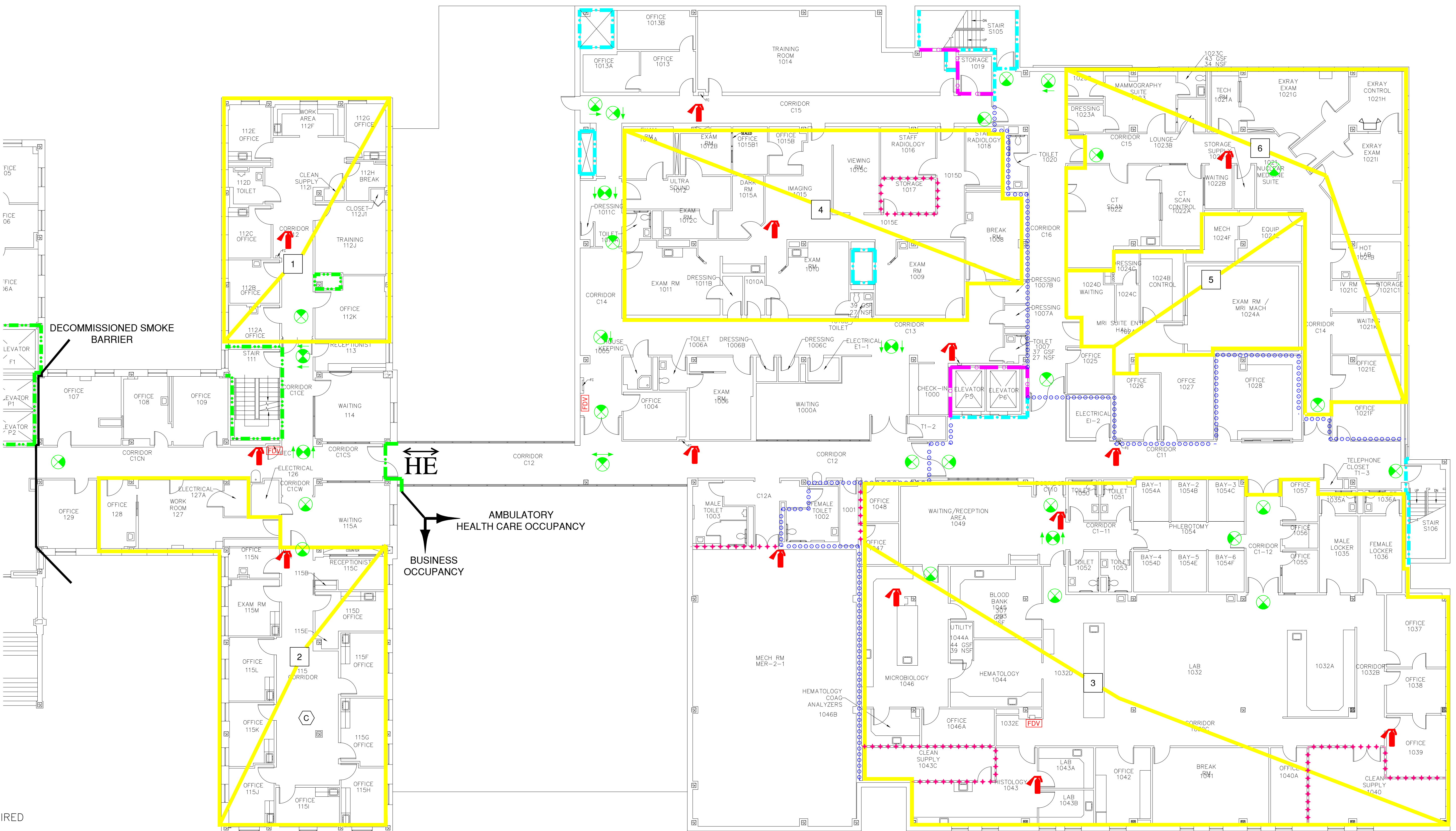
HORIZONTAL EXIT PASSAGEWAY
- EX

EXIT
- EP

EXIT PASSAGEWAY
- LC

LINEN CHUTE
- SUITE DESIGNATIONS
- AREA OPEN TO CORRIDOR – WITH SMOKE DETECTION
- AREA OPEN TO CORRIDOR – NO SMOKE DETECTION REQUIRED
- EXIT STAIR OR PASSAGEWAY
- SPRINKLER/FIRE ALARM ZONE
- F

MANUAL PULL STATION
- FIRE EXTINGUISHER



BUILDING 1 FIRST FLOOR SOUTH

FULLY SPRINKLERED  
BUSINESS OCCUPANCY

Revisions	Date
FP&C Proj. #:	1694.14



Dept. of Veterans Affairs  
Health Care Center  
2300 Ramsey St.  
Fayetteville, NC 28301



FIRE PROTECTION & CODE  
CONSULTANTS, LLC  
1300 MAIN STREET  
INDIANAPOLIS, IN 46204  
(317)486-5188

Drawing Title
BUILDING 1 FIRST FLOOR SOUTH

Client Project No.	Contract No.
Building No. MAIN	AutoCAD File Name SOC03,04 1-1

Project Title
STATEMENT OF CONDITIONS

Designed By FVO	Checked By FVO	Drawn By DN	Date 12/27/16
Location VA HEALTH CARE CENTER FAYETTEVILLE, NORTH CAROLINA			Scale: NO SCALE

Drawing No.
SOC-4
Sht. 5 of 10