

SUITE DESCRIPTIONS

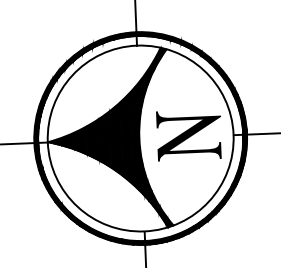
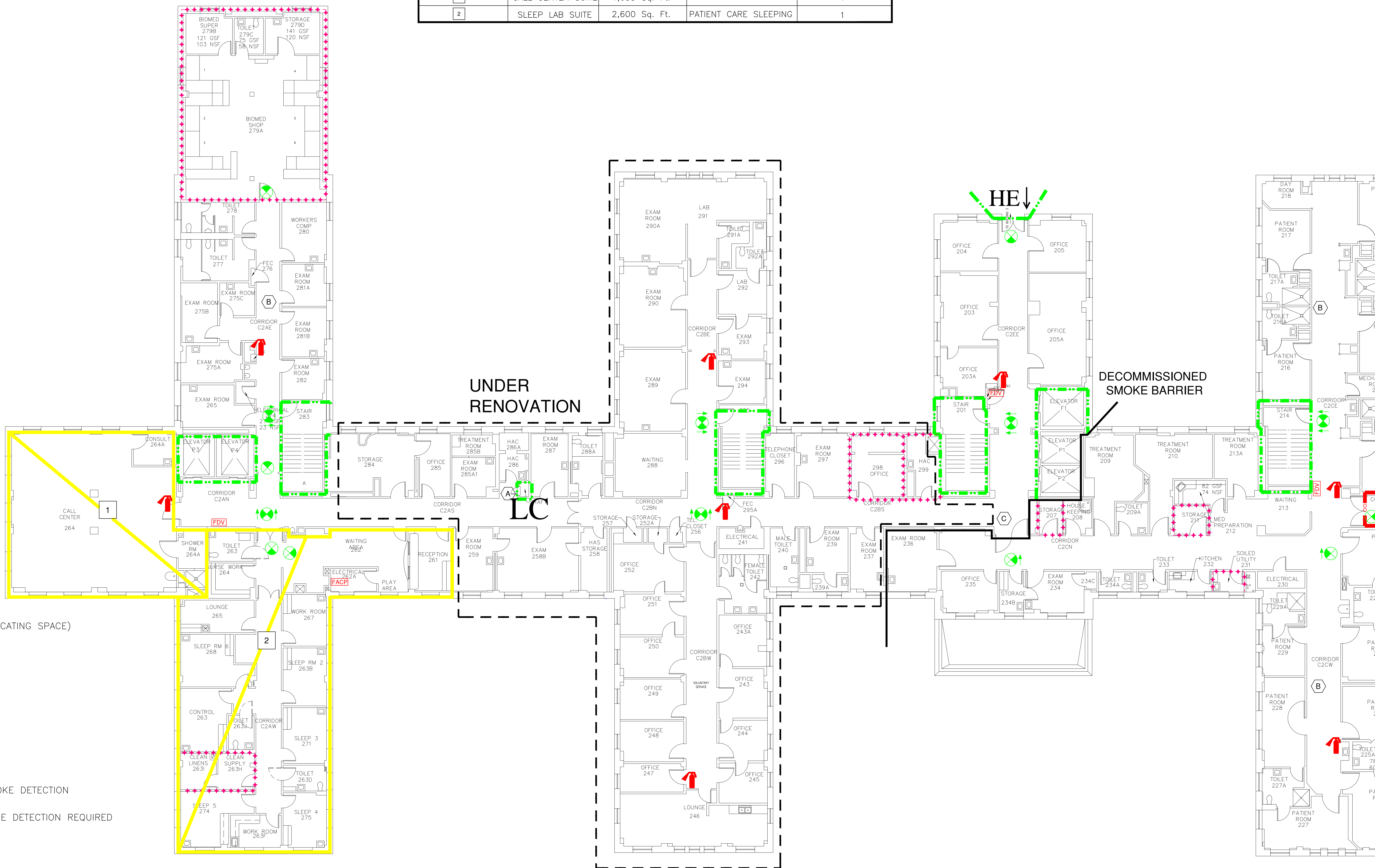
| SUITE NUMBER | SUITE NAME | SUITE SIZE | TYPE OF SUITE | EXIT NUMBER |
|--------------|-------------------|---------------|------------------------|-------------|
| 1 | CALL CENTER SUITE | 1,635 Sq. Ft. | NON PATIENT CARE | 1 |
| 2 | SLEEP LAB SUITE | 2,600 Sq. Ft. | PATIENT CARE, SLEEPING | 1 |

KEY NOTES:

- A** LINEN CHUTE CONSTRUCTED PRIOR TO DEVELOPMENT OF NFPA 82 AND SERVICE OPENING REQUIREMENT NOW FOUND IN SECTION 5.2.5.1.1 OF NFPA 82-2009 EDITION (FIRST ADOPTED IN 1999 EDITION).
- B** SEE EQUIVALENCY FOR DEAD END CORRIDORS.
- C** ACCESS CONTROLLED EGRESS DOOR WITH FIRE ALARM INTERFACE.



SYMBOLS LIST

- 3 HOUR FIREWALL
2 HOUR FIREWALL
1 HOUR FIREWALL
2 HOUR FIRE/SMOKEWALL
1 HOUR FIRE/SMOKEWALL
30 MINUTE SMOKE BARRIER
SMOKE RESISTIVE HAZARDOUS AREA
NON RATED SMOKE PARTITION
NON-RATED SMOKE BARRIER (COMMUNICATING SPACE)
NON-FIRE-RATED PARTITION
HORIZONTAL EXIT PASSAGEWAY
EXIT
EXIT PASSAGEWAY
LINEN CHUTE
SUITE DESIGNATIONS
AREA OPEN TO CORRIDOR - WITH SMOKE DETECTION
AREA OPEN TO CORRIDOR - NO SMOKE DETECTION REQUIRED
EXIT STAIR OR PASSAGEWAY
SPRINKLER/FIRE ALARM ZONE
MANUAL PULL STATION
FIRE EXTINGUISHER



BUILDING 1 SECOND FLOOR NORTH

FULLY SPRINKLERED
BUSINESS OCCUPANCY

| | | | | | | | | | | | | | | |
|---------------|---------|---|--|--|---|----------------------------------|----------------------|-----------------------------------|----------------------------|--|------------|--------------------|--------------|-------------|
| Revisions | Date |  | Dept. of Veterans Affairs Health Care Center 2300 Ramsey St. Fayetteville, NC 28301 |  | FIRE PROTECTION & CODE CONSULTANTS, LLC 1200 MAIN STREET INDIANAPOLIS, IN 46224 (317)486-5188 | Drawing Title | Client Project No. | Contract No. | Project Title | Designed By | Checked By | Drawn By | Date | Drawing No. |
| FP&C Proj. #: | 1694.14 | | | | | BUILDING 1 SECOND FLOOR NORTH | Building No. MAIN | AutoCAD File Name SOC05,06 1-2 | STATEMENT OF CONDITIONS | FVO | FVO | DN | 12/27/16 | SOC-5 |
| | | | | | | | | | | Location VA HEALTH CARE CENTER FAYETTEVILLE, NORTH CAROLINA | | Scale: NO SCALE | Sht. 6 Of 10 | |