

SUITE DESCRIPTIONS

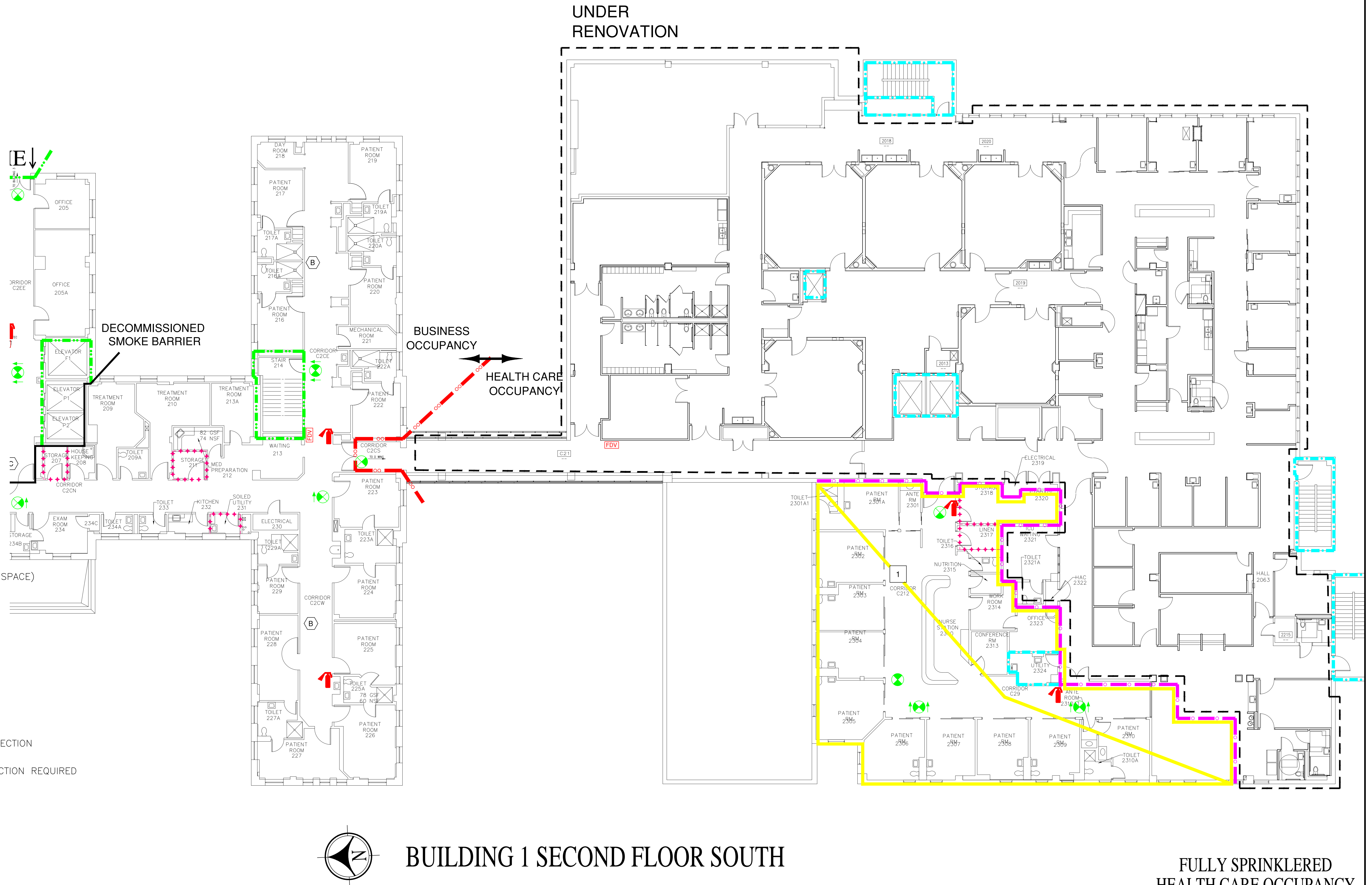
SUITE NUMBER	SUITE NAME	SUITE SIZE	TYPE OF SUITE	EXIT NUMBER
1	ICU SUITE	4,810 Sq. Ft.	NON SLEEPING PATIENT CARE	1

KEY NOTES:

- A** LINEN CHUTE CONSTRUCTED PRIOR TO DEVELOPMENT OF NFPA 82 AND SERVICE OPENING REQUIREMENT NOW FOUND IN SECTION 5.2.5.1.1 OF NFPA 82-2009 EDITION (FIRST ADOPTED IN 1999 EDITION).
- B** SEE EQUIVALENCY FOR DEAD END CORRIDORS.
- C** ACCESS CONTROLLED EGRESS DOOR WITH FIRE ALARM INTERFACE.

SYMBOLS LIST

- 3 HOUR FIREWALL
2 HOUR FIREWALL
1 HOUR FIREWALL
2 HOUR FIRE/SMOKEWALL
1 HOUR FIRE/SMOKEWALL
30 MINUTE SMOKE BARRIER
SMOKE RESISTIVE HAZARDOUS AREA
NON RATED SMOKE PARTITION
NON-RATED SMOKE BARRIER (COMMUNICATING SPACE)
NON-FIRE-RATED PARTITION
HORIZONTAL EXIT PASSAGEWAY
EXIT
EXIT PASSAGEWAY
LINEN CHUTE
SUITE DESIGNATIONS
AREA OPEN TO CORRIDOR - WITH SMOKE DETECTION
AREA OPEN TO CORRIDOR - NO SMOKE DETECTION REQUIRED
EXIT STAIR OR PASSAGEWAY
SPRINKLER/FIRE ALARM ZONE
MANUAL PULL STATION
FIRE EXTINGUISHER



BUILDING 1 SECOND FLOOR SOUTH

FULLY SPRINKLERED
HEALTH CARE OCCUPANCY

Revisions	Date		Dept. of Veterans Affairs Health Care Center 2300 Ramsey St. Fayetteville, NC 28301		FIRE PROTECTION & CODE CONSULTANTS, LLC 1301 MAIN STREET INDIANAPOLIS, IN 46224 (317)486-5188	Drawing Title	Client Project No.	Contract No.	Project Title	Designed By	Checked By	Drawn By	Date	Drawing No.
FP&C Proj. #:	1694.14					BUILDING 1 SECOND FLOOR SOUTH	Building No. MAIN	AutoCAD File Name SOC05_06 1-2	STATEMENT OF CONDITIONS	FVO	FVO	DN	12/27/16	SOC-6
										Location VA HEALTH CARE CENTER FAYETTEVILLE, NORTH CAROLINA		Scale: NO SCALE		Sht. 7 Of 10